



# INTERPHONE U-COM 16 Motorcycle Intercom User Manual

[Home](#) » [Interphone](#) » INTERPHONE U-COM 16 Motorcycle Intercom User Manual 

## Contents

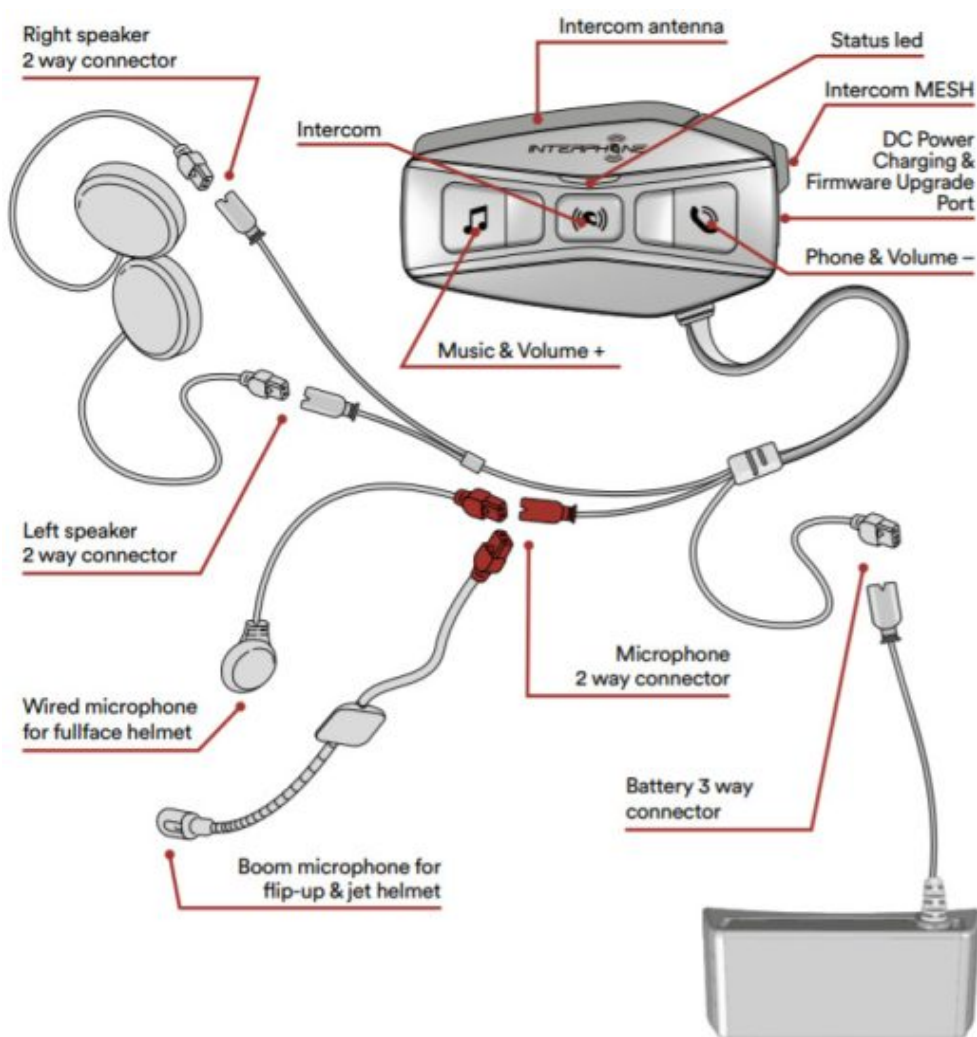
- 1 U-COM 16 Motorcycle Intercom
- 2 Product details
- 3 Package contents
- 4 HOW TO INSTALL
- 5 GETTING STARTED
- 6 PAIRING WITH OTHER BLUETOOTH® DEVICES
- 7 MOBILE PHONE USAGE
- 8 MUSIC
- 9 MESH INTERCOM
- 10 BLUETOOTH® INTERCOM
- 11 FM RADIO
- 12 VOICE COMMANDS
- 13 FUNCTION PRIORITY AND FIRMWARE UPGRADES
- 14 CONFIGURATION SETTING
- 15 Phone
- 16 Music and FM radio
- 17 Mesh Intercom – OPEN MESH
- 18 Mesh Intercom – GROUP MESH
- 19 Bluetooth® Intercom – pairing
- 20 Bluetooth® Intercom – conference
- 21 Bluetooth® Intercom – other pairings
- 22 TROUBLESHOOTING
- 23 Documents / Resources
- 24 Related Posts

**U-COM 16 Motorcycle Intercom**

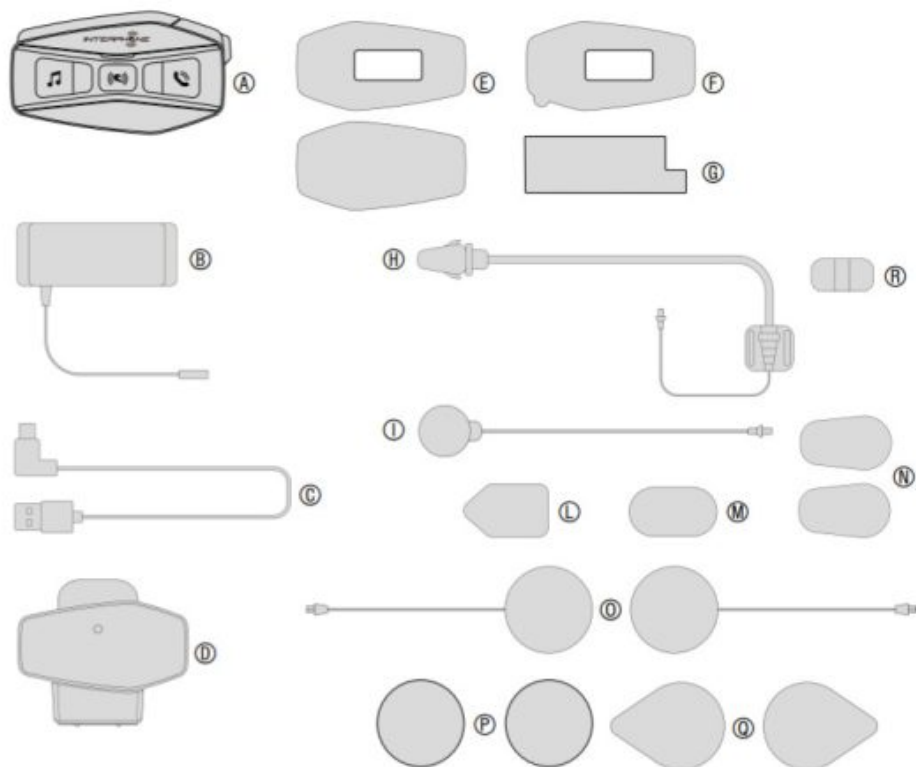


## User Manual

### Product details



### Package contents



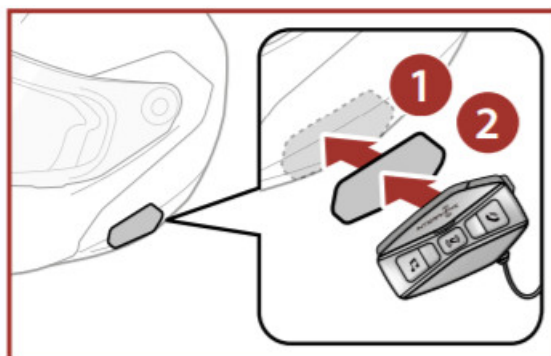
A) Main unit  
B) Battery with bracket  
C) Data/charge cable usb type C  
D) Main unit bracket  
E) Main unit Velcro  
F) Main unit adhesive  
G) Battery bracket adhesive  
H) Boom microphone

I) Wired microphone  
L) Boom microphone Velcro  
M) Wired microphone Velcro a  
N) Boom microphone foam cover  
O) Speakers  
P) Spacers for speakers  
Q) Speakers Velcro  
R) Boom microphone holder

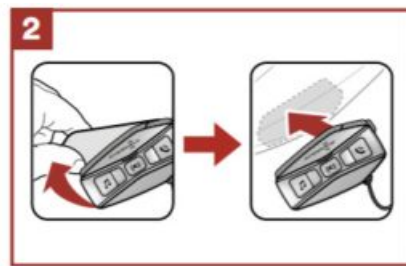
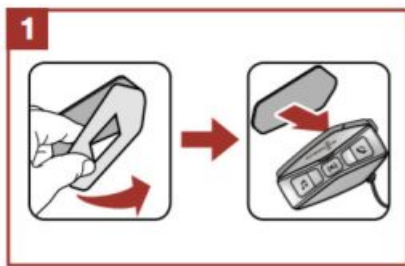
## HOW TO INSTALL

### Install main unit

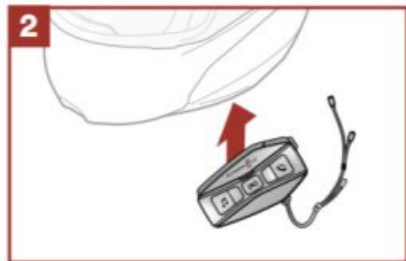
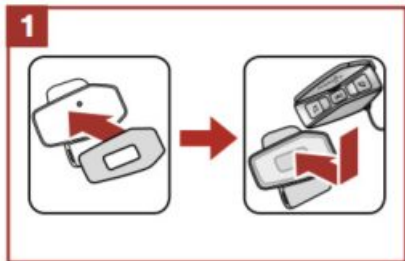
Using the hook and loop fasteners for main unit



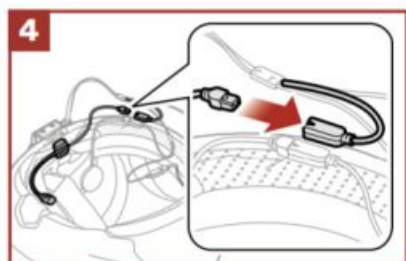
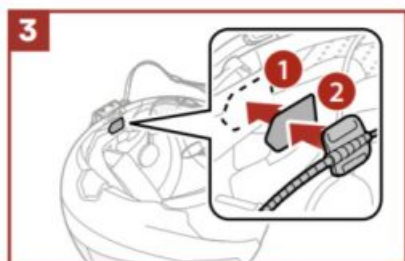
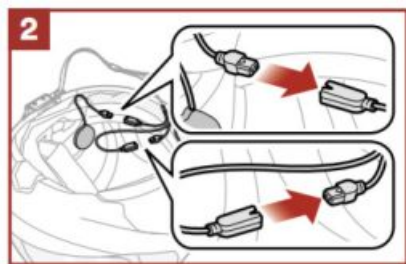
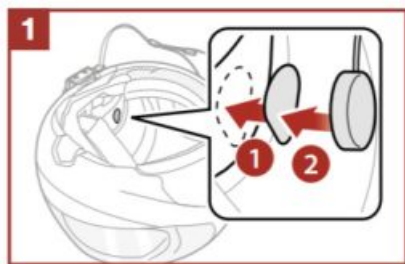
Using the double-sided adhesive tapes for main unit



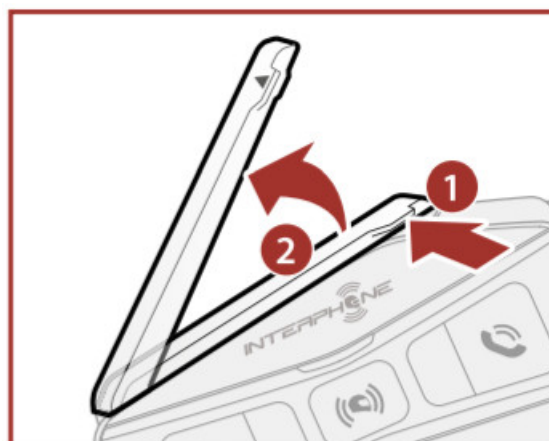
Using the clamp for main unit



Installing the speakers and the microphone



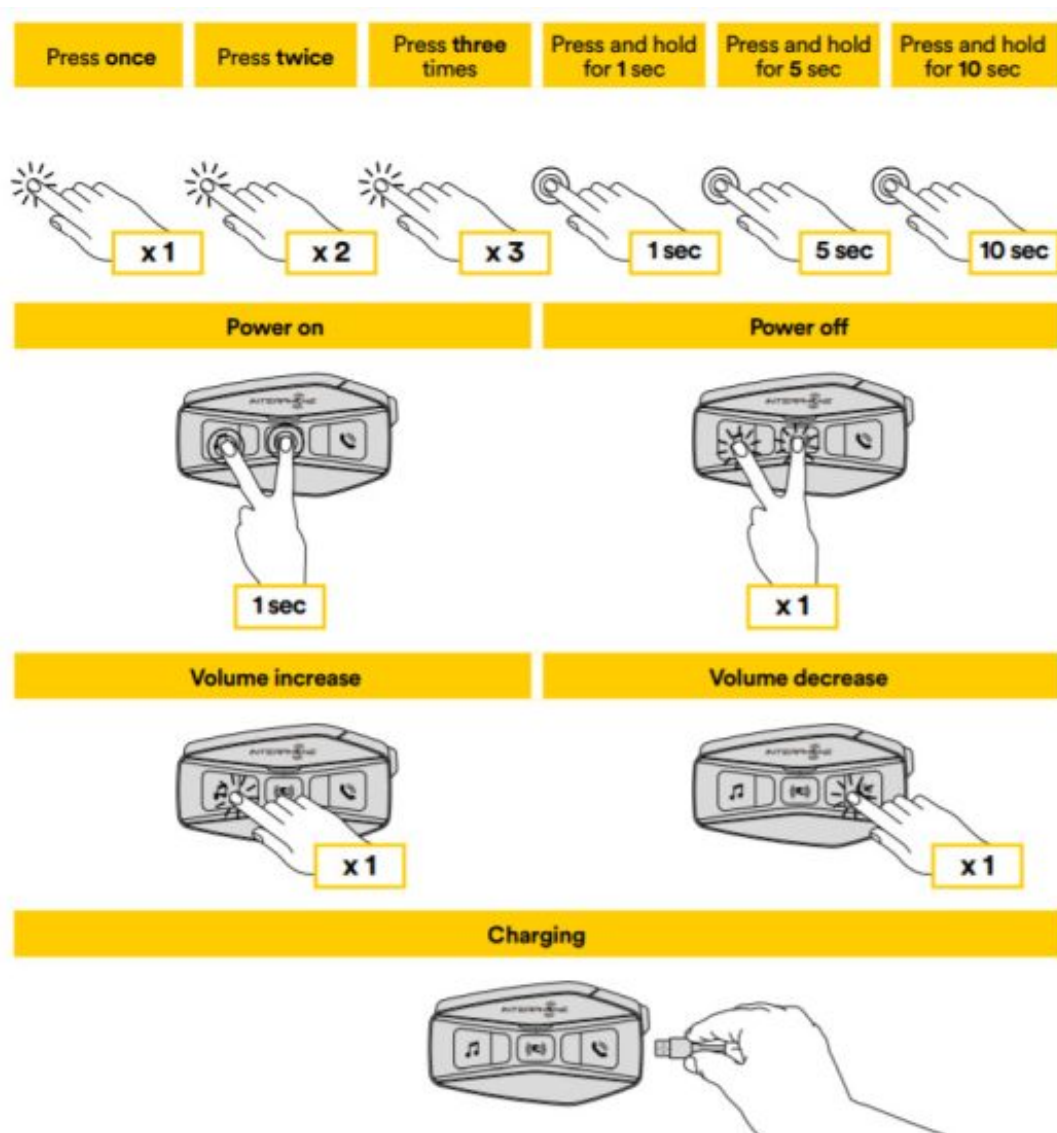
**Mesh Intercom Antenna**



Pull the mesh intercom antenna inwards slightly to unfold it.

## GETTING STARTED

### Legenda and basic functions

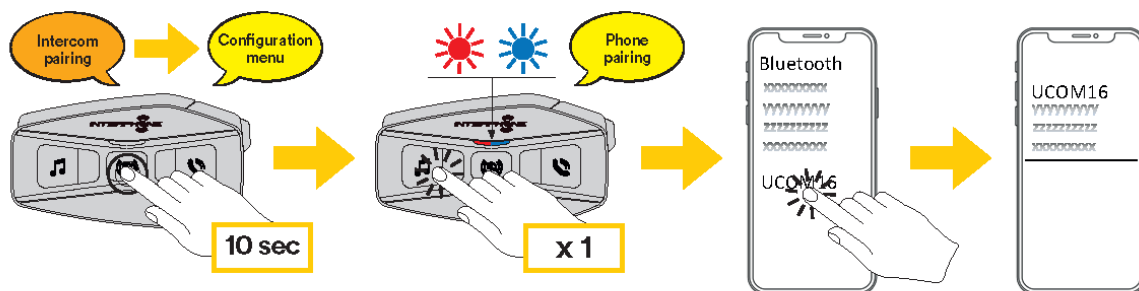


#### Note:

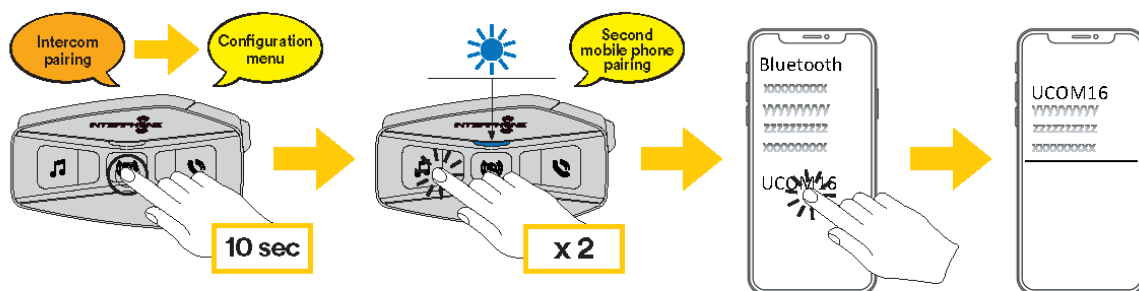
- U-COM 16 uses fast charging technology, via a USB-C connector. Charging for 30 minutes will give 6h of intercom talking in Bluetooth® mode or 3,5h in Mesh mode.
- Any USB charger with FCC, CE, IC, or any local approval can be used.
- U-COM 16 is compatible only with USB devices with 5V DC input.

## PAIRING WITH OTHER BLUETOOTH® DEVICES

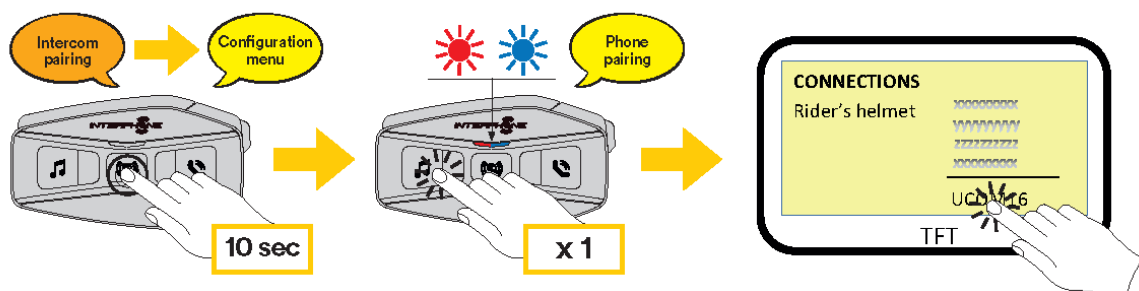
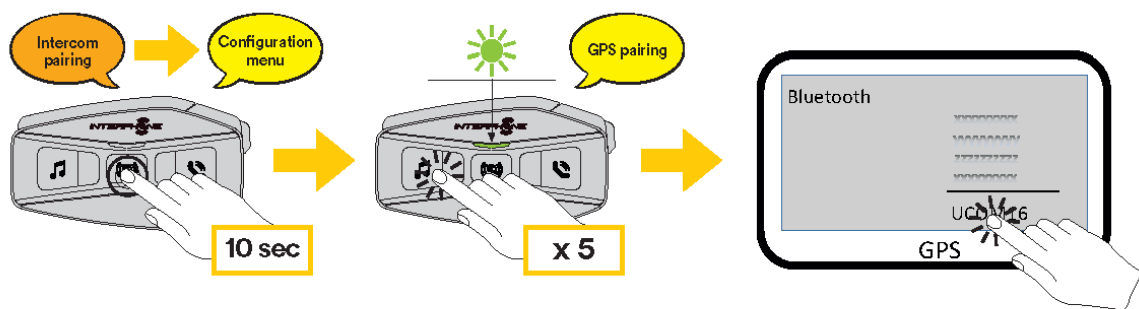
### Main phone pairing (to be done with unit on)



### Second phone pairing (to be done with unit on)



### Gps SATNAV & TFT pairing (to be done with unit on)



When using the headset with other Bluetooth® devices for the first time, they will need to be “paired.” This enables them to recognize and communicate with one another whenever they are within range.

U-COM 16 can be paired to a max of 3 U-COM units.

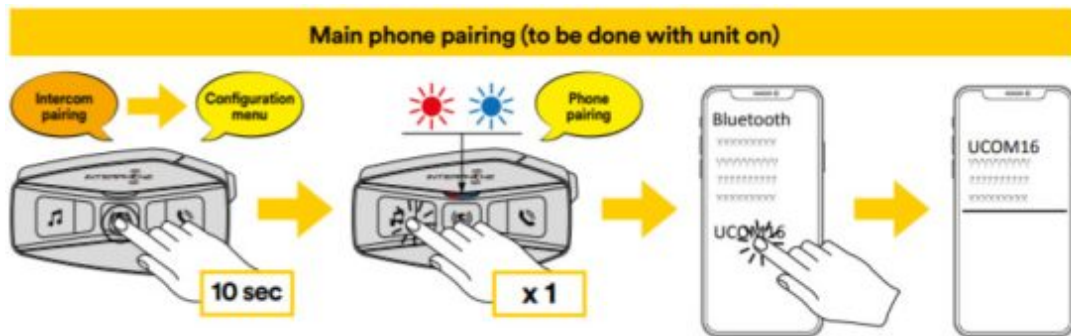
U-COM 16 can be paired to Bluetooth® devices such as mobile phones, GPS Satnav, and TFT motorcycle multimedia systems.

### Pairing with Mobile phone / TFT systems

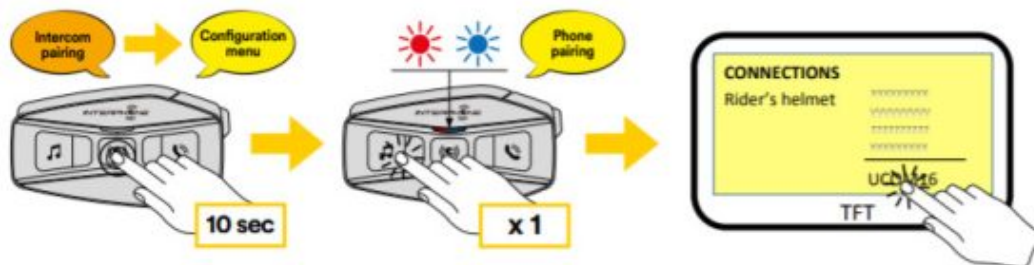
1. Switch on Bluetooth® service on your phone (check the device manual for more details).
2. With U-COM 16 on, press and hold the central button for 10 seconds, to enter the settings menu. Don't release the button until the led light is blue.
3. Press once MUSIC button to start phone pairing mode.



4. On your phone search for new Bluetooth® devices.
5. In a few moments, the phone will list “U-COM 16 vx. x” among available devices to pair. Select this item.
6. If prompted for a PIN or code, enter 0000 (four times zero ).
7. U-COM Voice guide will confirm the successful pairing.
8. If your smartphone asks for additional authorization please confirm.



Multimedia TFT system of the motorcycle must be paired with “PHONE PAIRING”:



**Note:** There is an alternative way, to pair only the first phone (main telephone). With the control unit off, press and hold at the same time the MUSIC key together with the CENTRAL key, until the red/blue LED flashes. The primary phone will have priority over the second phone, in case of simultaneous call reception on both phones.

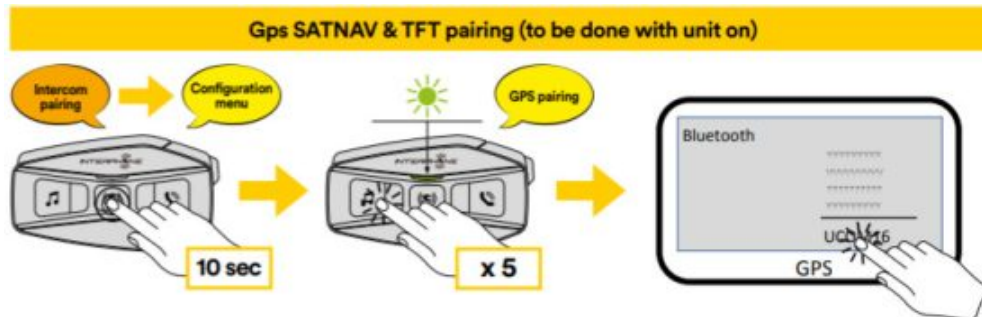
### Second mobile phone pairing

1. Switch on Bluetooth® service on your phone (check the device manual for more details).
2. With U-COM 16 on, press and hold the central button for 10 seconds, to enter the settings menu. Don't release the button until the led light is blue.
3. Press the MUSIC button twice to activate the Second mobile phone pairing mode.
4. Start the search for new Bluetooth® devices on the mobile phone.
5. In a few moments, the phone will list “U-COM 16 vx. x” among available devices to pair. Select this item.
6. If prompted for a PIN or code, enter 0000 (four times zero ).
7. UCOM Voice guide will confirm the successful pairing.
8. If your smartphone asks for additional authorization please confirm.

### GPS Pairing

1. Switch on Bluetooth® service on your GPS (check the device manual for more UCOM16 details). 10-sec x 1
2. With U-COM 16 on, press and hold the central button for 10 seconds, to enter the settings menu. Don't release the button until the led light is blue.

3. Press the MUSIC button 5 times to activate GPS pairing mode.
4. Start the search for new Bluetooth Second phone pairing (to be done with a unit on)® devices on the GPS.
5. In a few moments, the device will list “U-COM 16 vx. x” among available devices to pair. Select this item.
6. If prompted for a PIN or code, enter 0000 (four times zero).
7. UCOM Voice guide will confirm the successful pairing.
8. If your device asks for additional authorization please confirm.



### Advanced Selective Pairing: Hands-Free or A2DP Stereo

Phone Pairing allows the headset to establish two Bluetooth® profiles: Hands-Free or A2DP Stereo. Advanced Selective Pairing allows the headset to separate the profiles to enable connection with two devices.

#### Phone Selective Pairing – Hands-Free Profile

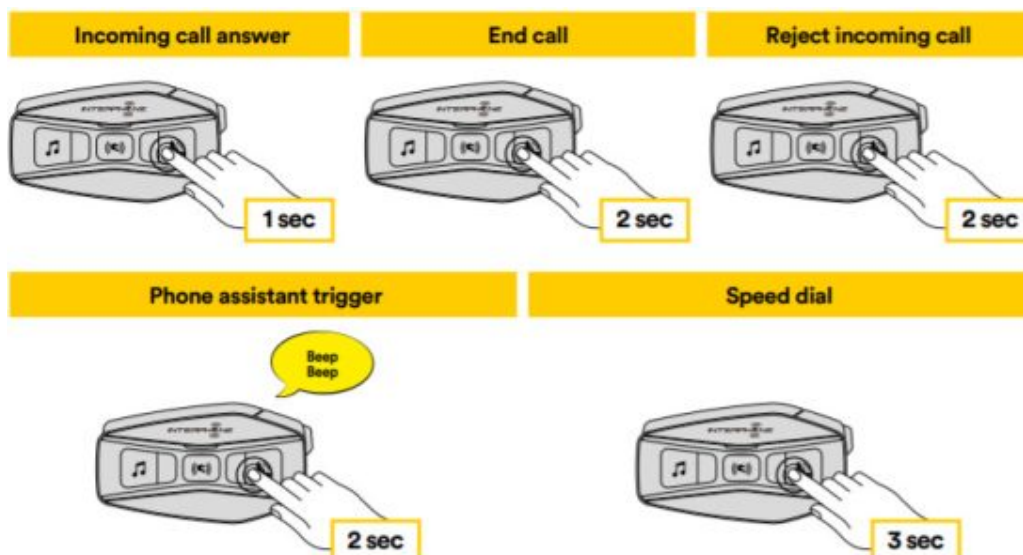
Execute Phone Selective Pairing in the Configuration Menu.

#### Media Selective Pairing – A2DP Profile

Execute Media Selective Pairing in the Configuration Menu.

## MOBILE PHONE USAGE

### Making and Answering Calls





**Note:** If you have a GPS device connected, you will not hear its voice navigations during a phone call.

**Siri and Google Assistant**

U-COM 16 supports the Siri and Google Assistant access directly. You can activate the Siri or Google Assistant using the voice through the headset’s microphone, a wake word will be used. This is a word or group of words such as “Hey Siri” or “Hey Google”.

**Speed Dialing**

It is possible to store up to 3 telephone numbers (if “advanced mode” is active) to be used as speed dials. You can set the speed dial numbers via UNITE APP or INTERPHONE Device Manager.

**Using preset speed dial numbers**

How to activate speed dial (with ADVANCED FEATURES off)

**Speed dial**



How to activate speed dial (with ADVANCED FEATURES on)

- 1. Enter into the Speed Dial menu.

**Speed dial**



- 2. Navigate between the Speed Dial Preset with MUSIC and PHONE buttons, as indicated in the picture here below. Select the wanted feature with the CENTRAL button.

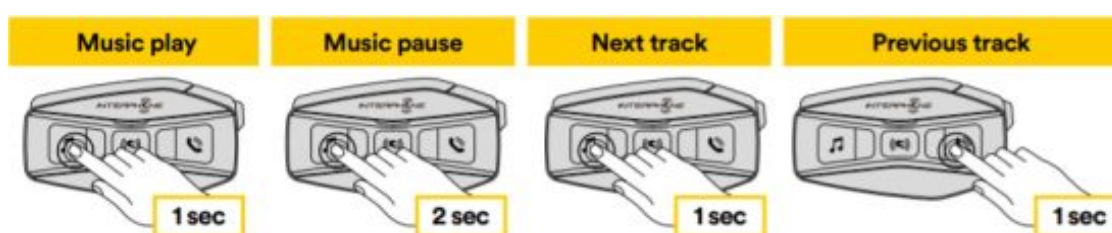
| Select one function  | Confirm selected funcion |
|--|--------------------------|
| <div><div><p>Last number redial<br/>Speed dial #1<br/>Speed dial #2<br/>...</p></div><div><p>x 1</p></div></div> |                          |

|                         |
|-------------------------|
| Last number redial      |
| Speed dial #1           |
| Speed dial #2           |
| Speed dial #3           |
| Cancel (exit from menu) |

## MUSIC

### Playing Music with Bluetooth® Devices

Interphone U-COM 16 can play music from Bluetooth® devices (smartphones, MP3 players, Motorcycle TFTs, etc ...) equipped with the A2DP profile. To play music you need to pair these devices to INTERPHONE U-COM 16.



### Music sharing

You can start sharing the music received from your phone with another U-COM control unit, during a two-way intercom conversation.

Both control units can control the playback of music, eg example go to the next track or the previous track.

Only with MESH intercom conversation, it is possible to listen to shared music in the background.

### Bluetooth® Intercom Music Sharing

To start/stop sharing music, activate first the intercom conversation, then press the PHONE button for 3 seconds.



### Mesh Intercom Music Sharing

To start/stop sharing music, activate the intercom conversation, then press the PHONE button for 3 seconds.

On the second unit, a voice prompt will ask to accept music sharing.

Press the MESH button once to accept, hold for 1 second the MESH button to reject.



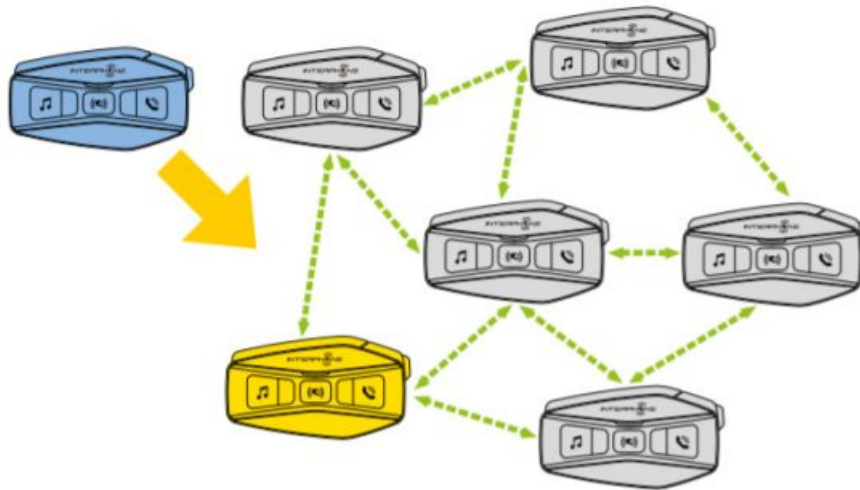
## MESH INTERCOM

### What is Mesh Intercom?

U-COM 16 is equipped with MESH 2.0 technology.

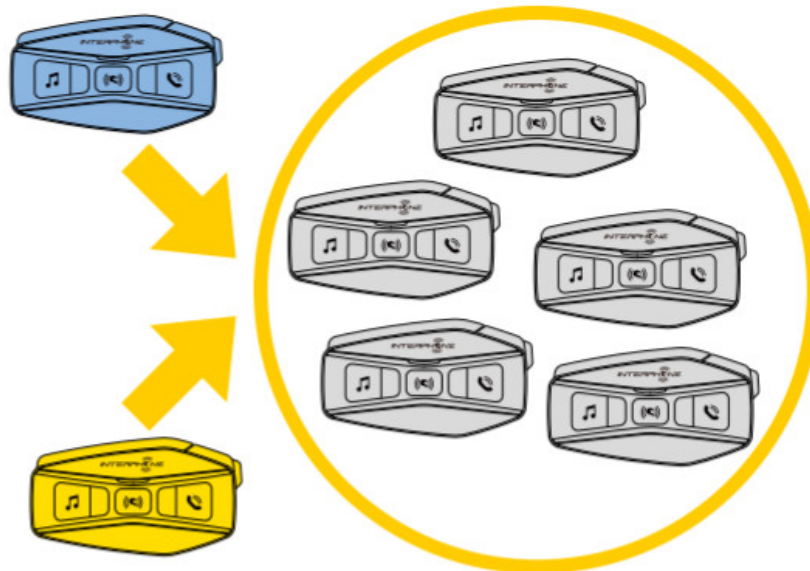
MESH 2.0 is the latest evolution of MESH intercom communication, which allows you to speak freely without having to do any pairing and without any position constraints within the group.

Within the same Open Mesh <sup>™</sup> channel or the same private group in Group Mesh <sup>™</sup>, users can talk and enjoy at the same time a conversation of excellent quality.

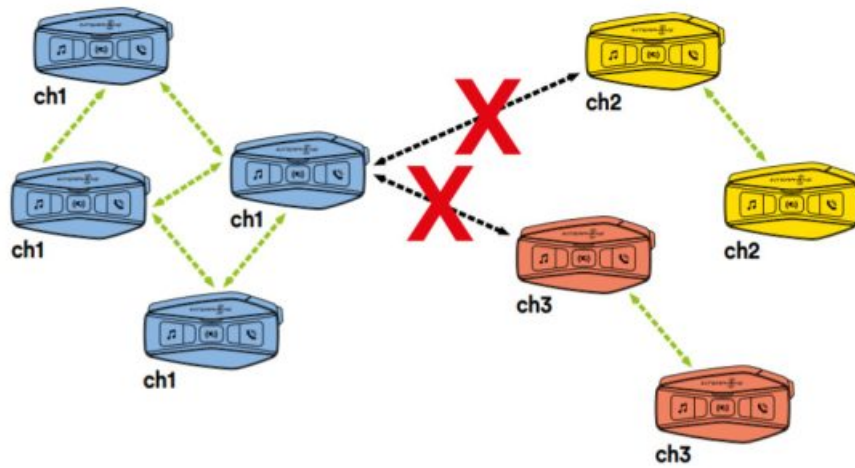


### OPEN MESH mode

The OPEN MESH mode allows free communication, in public mode, up to a maximum of 24 connected users. To talk, devices can only be within range, with the MESH mode active. OPEN MESH mode is active as a factory default mode.

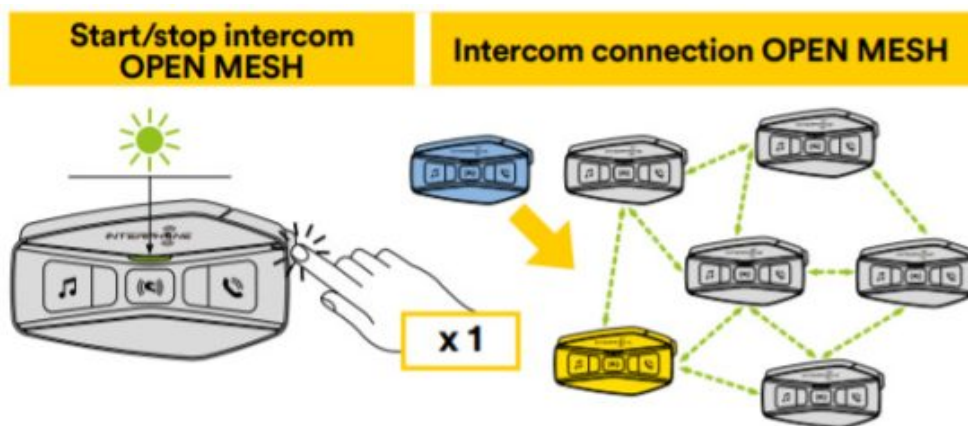


You can choose the MESH channel (from 1 to 9) to be used for communication.



### Start mesh intercom in OPEN MESH mode

With U-COM 16 on, press the MESH button on each control unit, to activate the communication mode. Each control unit automatically will connect to other units simply by speaking into the microphone. Adjust the volume of mesh communication according to your needs.



### OPEN MESH channel selection

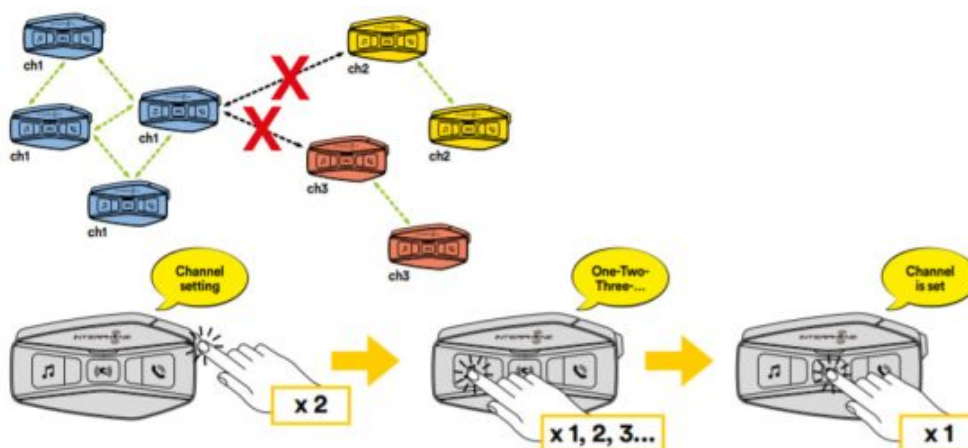
By activating OPEN MESH, the default factory setting is Channell.

Only the control units working on the same channel will be able to connect together.

You can choose a different channel to manage different conversation groups.

To change the channel, press the MESH button twice, change the channel by pressing the MUSIC button (each press advances one channel), confirm the channel selected by pressing the INTERCOM (central) button.

### Change intercom channel OPEN MESH (1 > 2 > 3 > 4 > 5 > 6 > 7 > 8 > 9 > Exit > 1 > 2 >...)

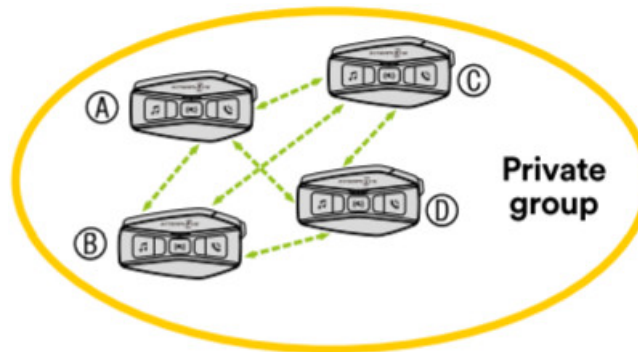


## Group Mesh (only available if “Advanced Features” is activated on the APP)

Group Mesh is an intercom function, which allows users to join a closed/private group conversation (as opposed to OPEN MESH which is open/public), limited to members of that group only.

Users belonging to the group can freely communicate with each other when they are in the same Group Mesh private group, taking advantage of all benefits of MESH 2.0 technology.

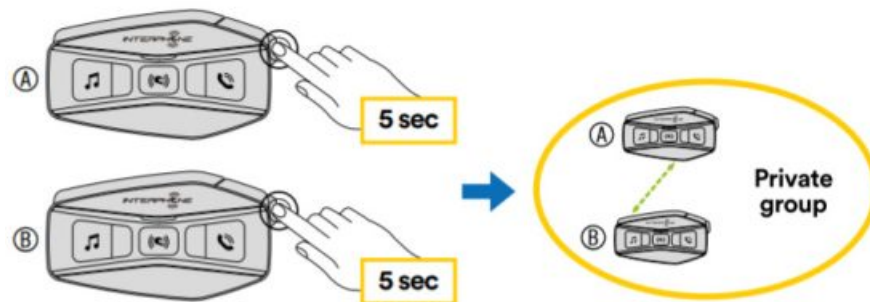
For a private intercom conversation using Group Mesh, the first step is to create the group by users. When users create a private group in Group Mesh, the intercom switches automatically from Open Mesh to a Group Mesh mode.



### Creating a group “Group Mesh”

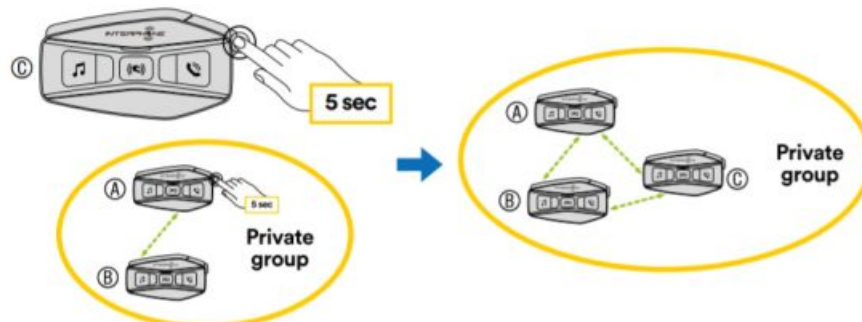
Creating a Group Mesh requires two or more “Open Mesh” users.

1. Activate the GROUP MESH function on the control units by pressing the MESH key on both control units for 5 seconds.



Units will complete the group creation and switch automatically from Open Mesh to Group Mesh mode.

2. One of the members of an existing Group Mesh, by pressing 5 seconds the MESH button, can allow new members to join to the existing Group Mesh.



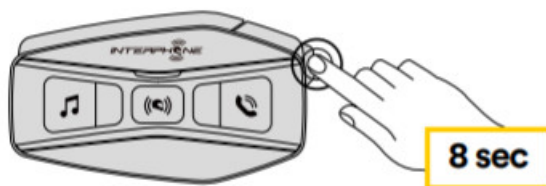
Units will complete the new group, adding the new member. The new member switches automatically from Open Mesh to Group Mesh and a voice prompt will confirm it.

3. Repeat the operation of point 2. for each control unit to be added to a private group.

## Reset Mesh (only available if “Advanced Features” is activated on the APP)

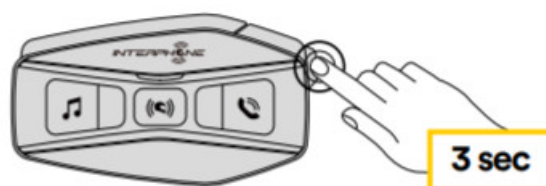


If a Mesh reset command is activated on a device, it returns automatically to Open Mesh mode (default channel 1). To start MESH reset, press the MESH button for 8 seconds.



### Toggle Open-Mesh / Group Mesh modes

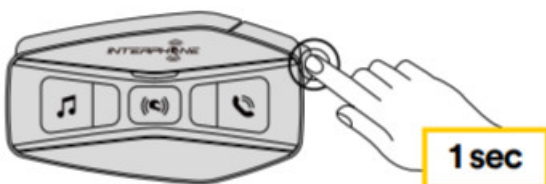
Users can toggle between Open Mesh and Group Mesh and vice versa without resetting the Mesh. This allows users to retain their private Group Mesh connection information while they are in Open Mesh. To switch from Open Mesh to Group Mesh and vice versa, press the MESH button for 3 seconds.



**Note:** If you have never joined Group Mesh before, you cannot switch between Open Mesh to Group Mesh and vice versa. The voice prompt is output “No groups available”.

### Enable / disable microphone

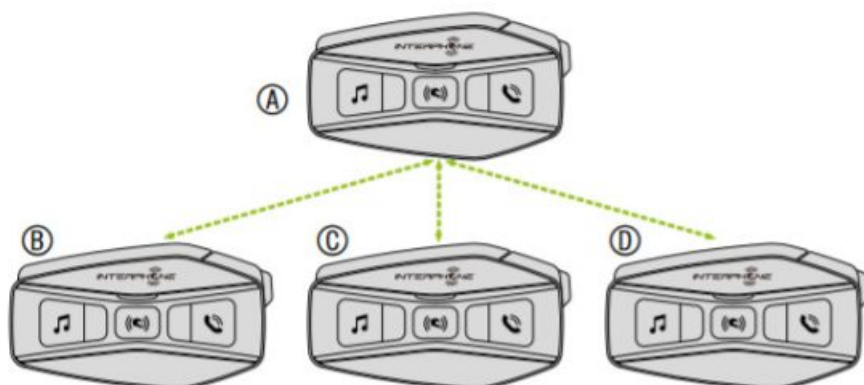
Users can mute the microphone during a mesh intercom conversation. The same command is used to reactivate the microphone. Press the MESH button for 1 second.



## BLUETOOTH® INTERCOM

### Intercom pairing

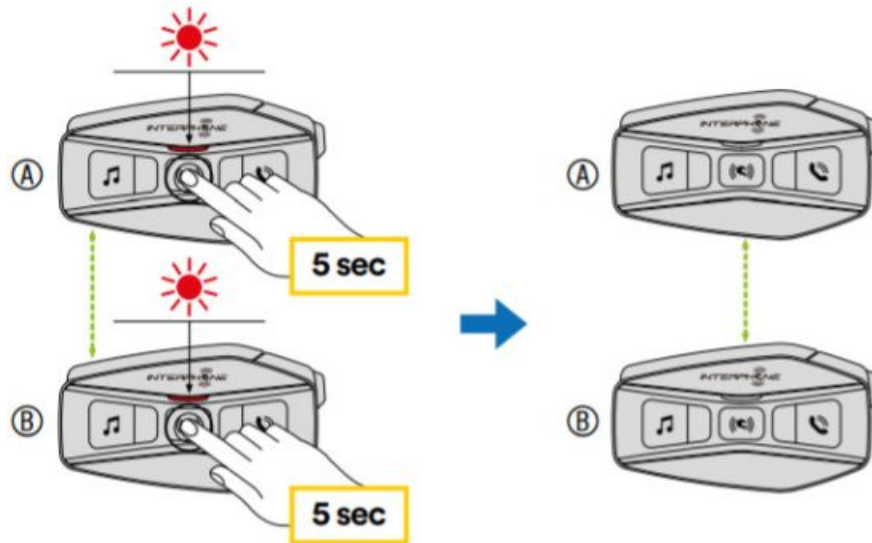
U-COM 16 can be paired with up to 3 other UCOM units (or Sena units), as shown in the following picture.





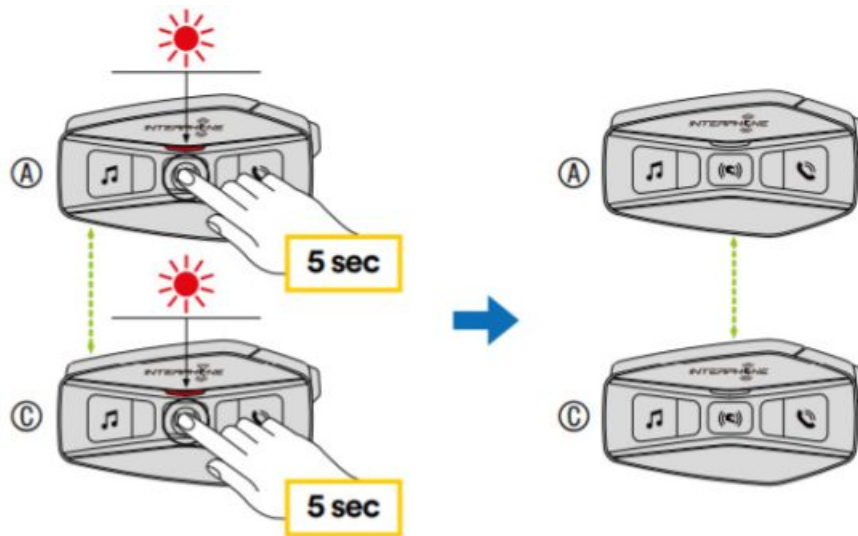
**The pairing is only necessary the first time, then the control units will automatically recognize each other.**

1. Press and hold the center button (intercom) on both units A and B for 5 seconds, until you hear the voice prompt "intercom pairing". The light flashing red indicates the device is now visible.

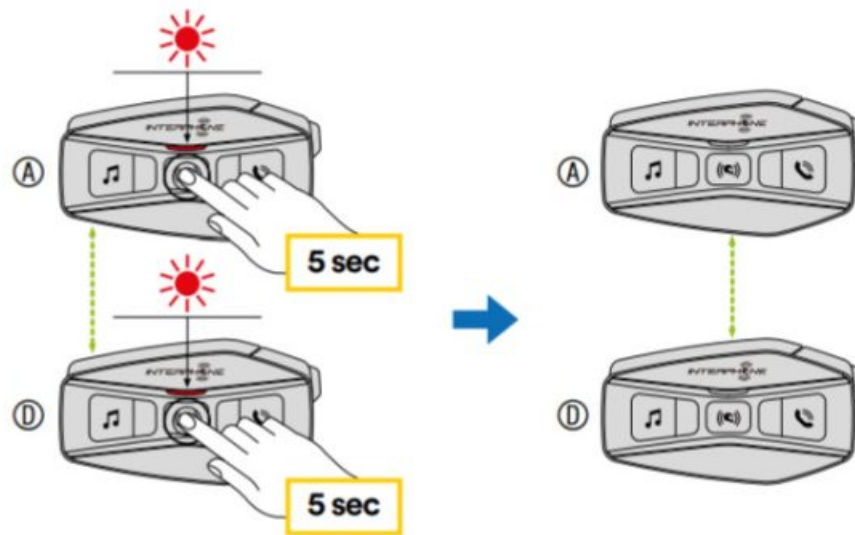


After a few seconds, the units will be paired and they will start the intercom communication. The light on both units will flash blue twice.

2. Repeat the previous step again, pressing the center button (intercom) on the two units A and C for 5 seconds until you hear the voice prompt "Intercom pairing".



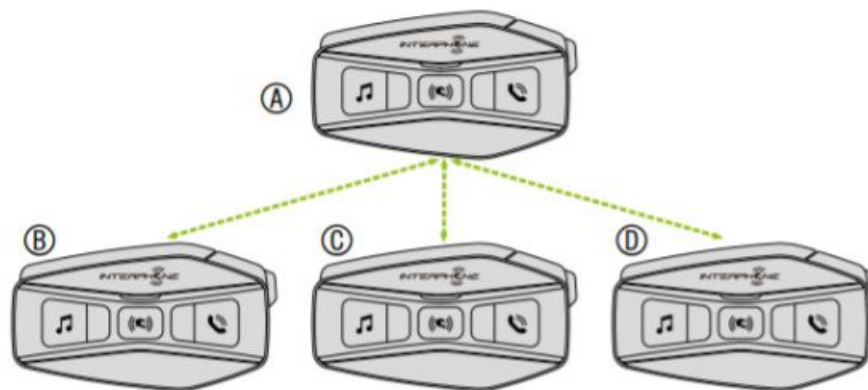
3. Repeat the procedure again, pressing the center button (intercom) of the two units A and D for 5 seconds until you hear the voice prompt "Intercom pairing".



## Two-way Intercom Conversation

After pairing the control units, communication can be started, by pressing the INTERCOM button (center button), according to the diagram below.

1. Press once to connect the control unit D.

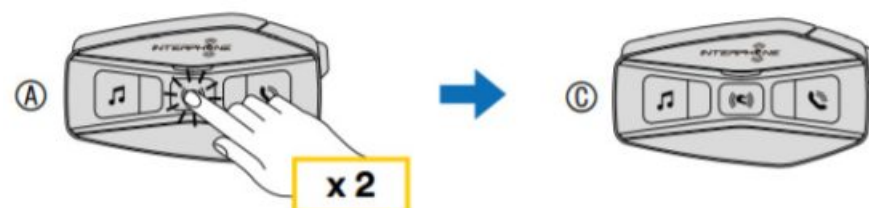


Start/stop intercom connection with unit "D"



2. Press twice to connect the control unit C.

Start/stop intercom connection with unit "C"



3. Press three times to connect the control unit B.

Start/stop intercom connection with unit "B"

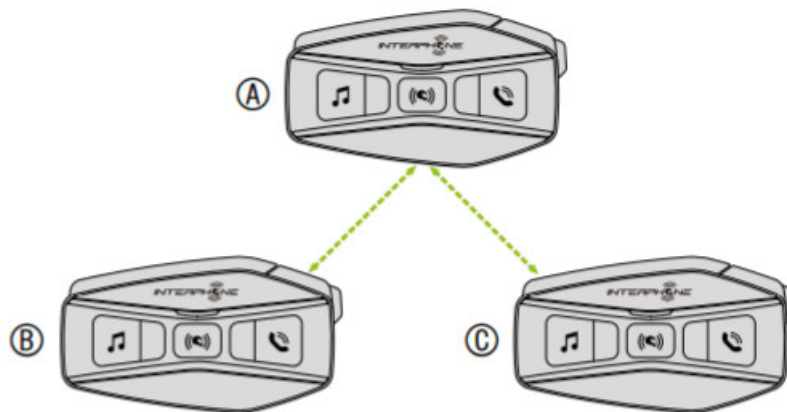


## Multi-user Intercom Conference

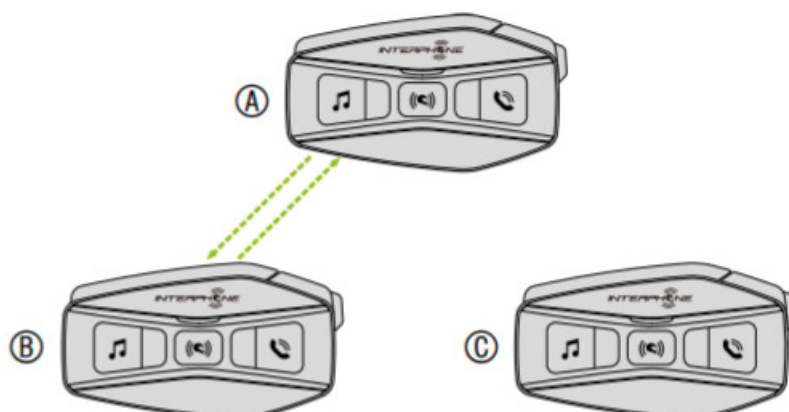
Conference conversations can be activated with up to three other units at the same time. During the three-way or four-way intercom conversation, any mobile phone is temporarily disconnected. However, as soon as the conversation ends, the connection with the mobile phone is automatically re-established.

### Starting a Three-way Intercom Conference

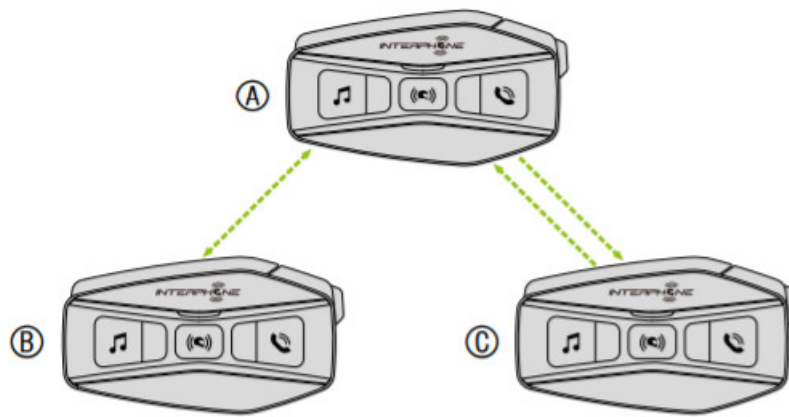
User (A) can create a three-way intercom conference with two other units (B and C) by establishing two intercom connections at the same time.



1. Pair the intercom (A) with the other two (B and C).
2. Start an intercom conversation with one of the two units in the intercom group. For example (A) can initiate an intercom conversation with (B). Alternatively B can initiate an intercom call with (A).



3. Then (A) can call (C), or (C) can join the conversation by making an intercom call to (A).

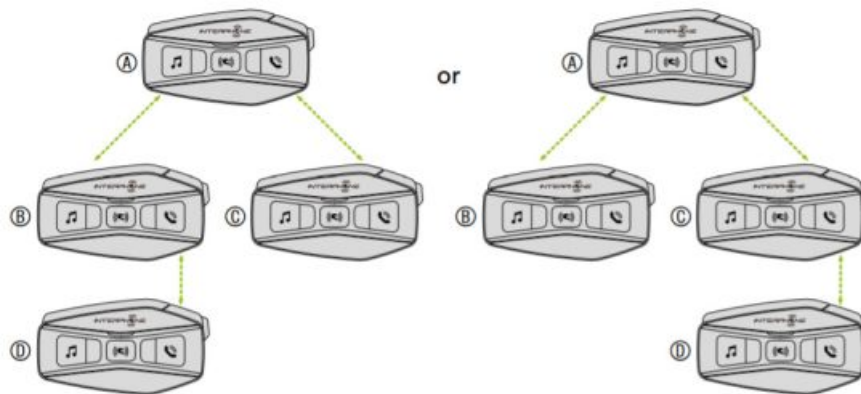


4. Now user (A) and two friends (B and C) will have a three-way intercom conference.

### Starting a four-way intercom conference

Pair the first three units A, B, C as indicated in chap. 8.3.1.

Pair D to B or to C. The new participant D can join the other three previously connected friends, creating a four-way conference, making an intercom call to B or C.



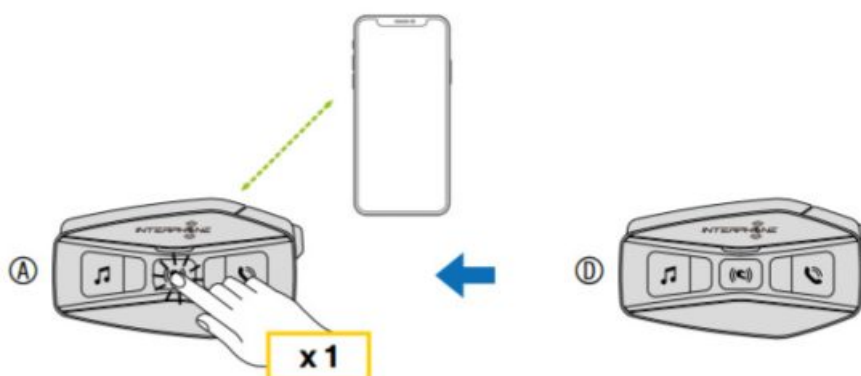
### Stop Multi-user Intercom

To stop all intercom connections, press and hold the center button for 3 seconds until the beep.

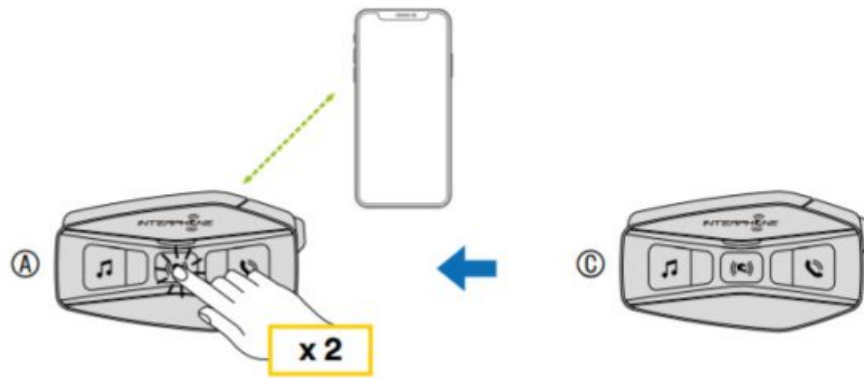
### Three-Way Conference Phone Call with Intercom Users

You can have a three-way Conference-Phone Call by adding an intercom user to the mobile phone conversation. During a mobile phone call, tap the center button once, twice or three times, to invite one of the intercom units (previously paired) to the conversation.

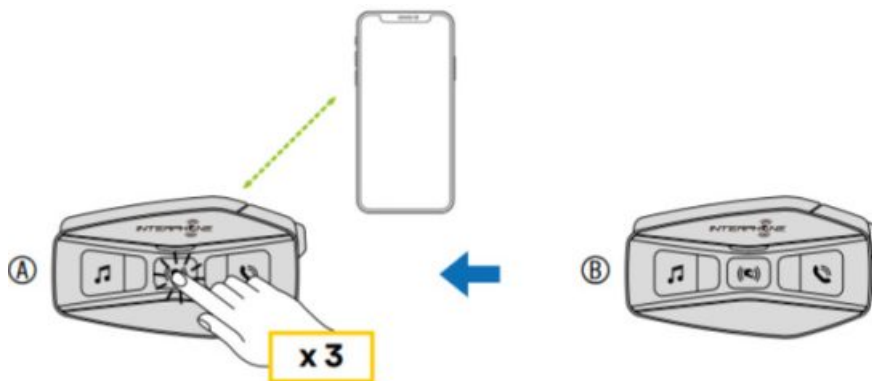
Press once to add unit D to the conference.



Press twice to add unit C to the conference.



Press three times to add unit B to the conference.



**Repeat the same command to disconnect the intercom unit from the phone call conference.**

To disconnect the mobile phone call during a conference phone call, press and hold the Center Button for 2 seconds.

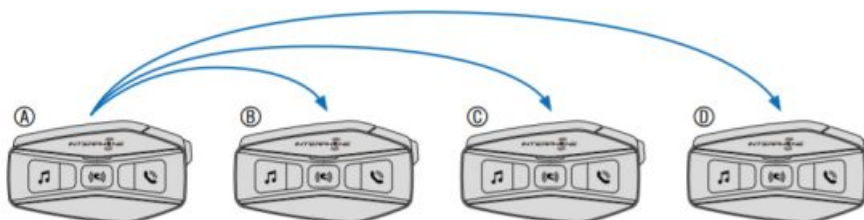
**Note:** When you have an incoming intercom call during a mobile phone call, you will hear high tone double beeps.

### Group Intercom

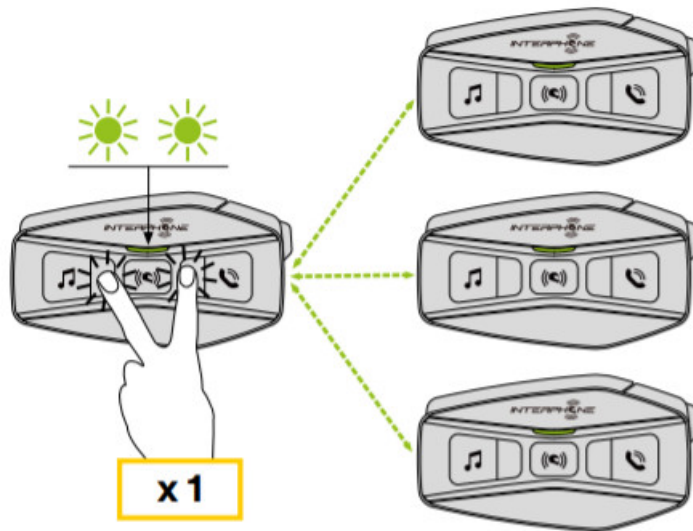
Group Intercom is a command that allows you to instantly start a Multi-Way Conference Intercom with three of the most recently paired headsets.

The first unit is the one that will activate the connection of all the members of the group.

The connection will be established with the same logic as a normal 4-way conference.



1. Go through intercom pairing with up to three headsets you want to have Group Intercom with.
2. Tap the MUSIC Button and PHONE Button together to begin Group Intercom. The LED will flash green and you will hear a voice prompt, "Group intercom".



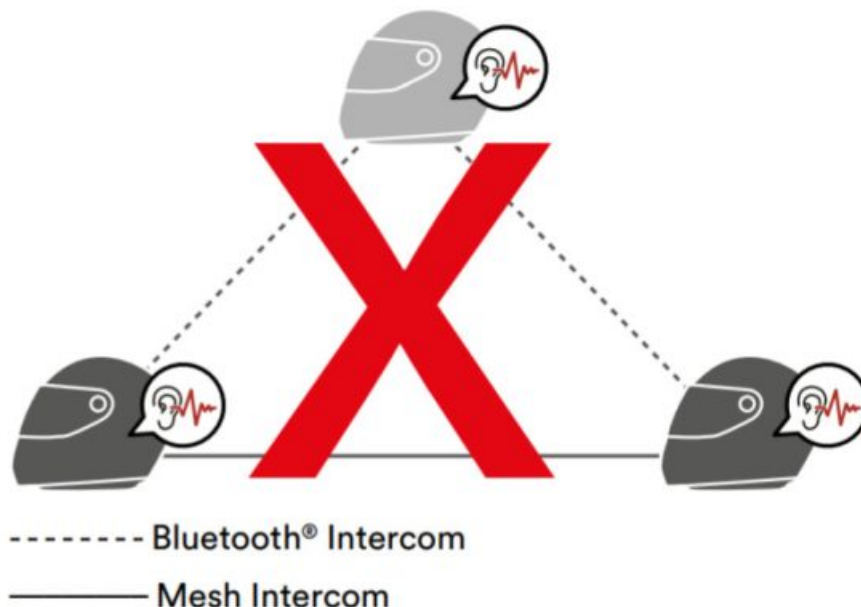
3. When all of the headsets are connected together, everyone will hear a voice prompt, “Group intercom connected”.
4. To stop Group Intercom, press and hold the Center Button for 5 seconds during Group Intercom. You will hear a voice prompt, “Group intercom terminated”.

### Mesh Intercom Conference with Bluetooth® Intercom Participant

Users can use the existing Bluetooth® intercom and Mesh Intercom function at the same time. In this case, it is recommended to communicate with other U-COM 2 or U-COM 4 headsets (or Sena Bluetooth® only devices) via Bluetooth® intercom connection and use Mesh Intercom between U-COM 16 devices (or Sena mesh headsets). A user who is in Open Mesh or Group Mesh when using Mesh Intercom is able to include up to 3 of their Bluetooth® intercom friends. You can start a two-way Intercom conversation with one of your three Intercom Friends to include them in the Mesh.

#### Note:

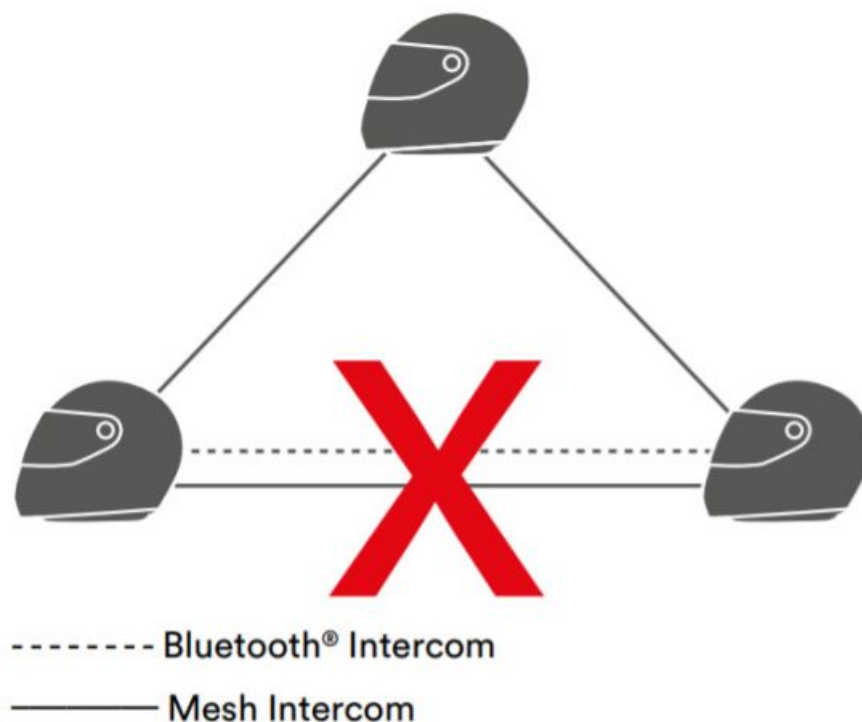
- The audio quality will be reduced if a U-COM 16 connects to 2 or more Bluetooth® intercom friends while in Open Mesh or Group Mesh when using Mesh Intercom.
- If a closed-loop is created, as shown below, each user will experience severe noise issues. We recommend avoiding this kind of closed-loop.



- If Bluetooth® intercom is accidentally activated during Mesh Intercom communication between U-COM 16

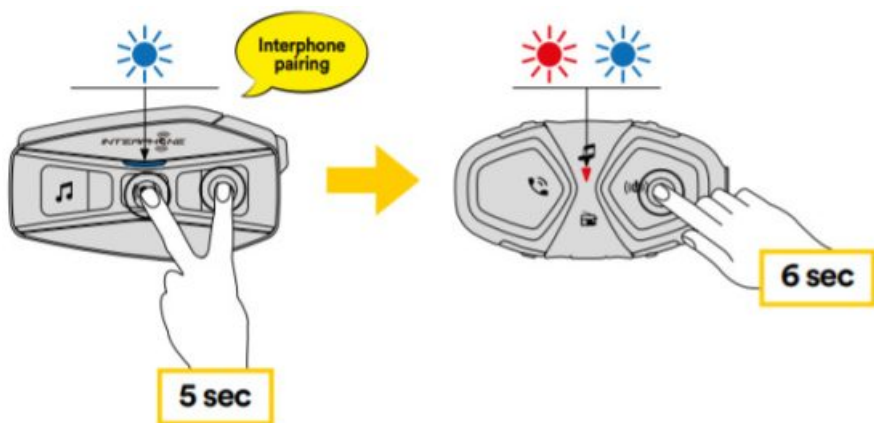


headsets, as shown below, you will hear a voice prompt, “Mesh intercom disabled, Bluetooth® intercom connected” every 1 minute. If you turn off the Bluetooth® Intercom or turn off the Mesh Intercom, the voice prompt will no longer come out.



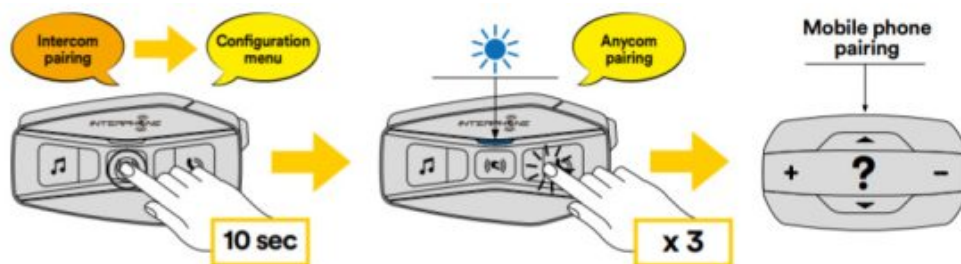
**Old Interphone Series**

It is possible to pair previous Interphone series devices by pressing, with the unit on, the INTERCOM and TELEPHONE buttons for 5 seconds. Then start pairing mode on the second unit, usually pressing the power button (with the control unit off) until the led flashes red/blue. Other Interphone series pairing (to be done with unit OFF)



**Anycom**

Anycom feature allows intercom conversations with other intercom brands. It is possible to pair the intercom with only one non-Interphone device at a time. The intercom distance depends on the performance of the connected Bluetooth 5 sec® intercom. When a not-Interphone device is paired with the Interphone device, if another Bluetooth® device is paired via the second mobile phone pairing, it will be disconnected.



1. With U-COM 16 on, enter the configuration menu by pressing the central button for 10 seconds. Do not to release the button before the led turns blue.
2. Press the PHONE button 3 times to activate the ANYCOM pairing mode.
3. Set the not-Interphone intercom to mode Phone pairing.

## Mesh Intercom with Anycom

Users can use the existing Two-way Anycom Intercom and Mesh Intercom function at the same time. In this case, it is recommended to communicate with a non-Interphone headset via a Two-way Anycom connection and use Mesh Intercom between U-COM 16 headsets.

A user who is in Open Mesh or Group Mesh when using Mesh Intercom is able to include one Anycom Intercom. You can start a Two-way Anycom conversation with your Anycom Intercom to include it in the Mesh.

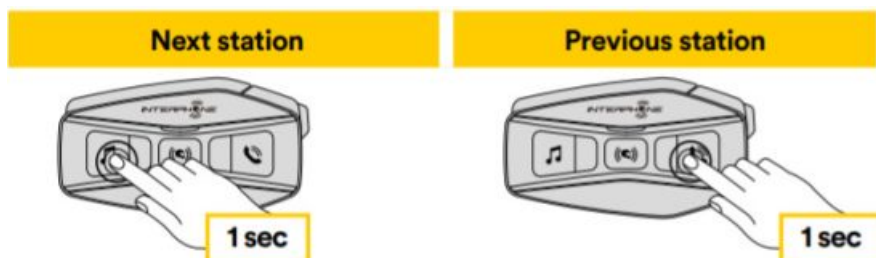
## FM RADIO

FM Radio features

Press the MUSIC button for 3 seconds to switch ON/OFF the FM RADIO.

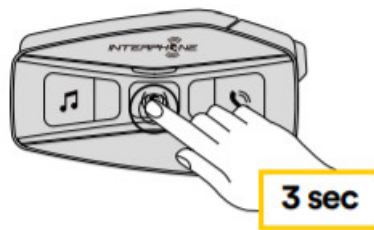


1. To start searching for radio stations, press the music key or the phone key for one second.



## Radio Stations memory

Tune on station you want to save into memories. Press for three seconds the central button to start the saving procedure.



Navigate through the preset numbers that you want to store.



Press the MUSIC button for one second to save the station.



Any existing station will be overwritten.

Up to 10 stations can be stored on U-COM 16. You can navigate through the saved stations by pressing the central button for one second, advancing one memory at a time.

1 -> 2 -> 3 -> 4 -> 5 -> 6 -> 7 -> 8 -> 9 -> 10 -> 1 -> 2 -> 3 -> ...



## Region Selection

You can select the proper FM frequency range for your location from the Device Manager (available for PC and MAC on [www.interphone.com](http://www.interphone.com)) or the INTERPHONE UNITE App. Using the region setting, you can optimize the seek function to avoid unnecessary frequency ranges.

### SETTINGS:

Worldwide 76.0 ~ 108.0MHz ± 100kHz

North America, South America and Australia 87.5 ~ 107.9MHz ± 200kHz

Asia and Europe 87.5 ~ 108.0MHz ± 100kHz

Japan 76.0 ~ 95.0MHz ± 100kHz

## Storing temporary stations (with “Advanced Features” activated by APP or Device Manager)

The TEMPORARY STORE feature automatically searches and saves the 10 nearest radio stations, without

changing the preset stations existing.

To activate the function, press the MUSIC button 3 times quickly.

The temporary preset stations are canceled when the intercom is restarted.

## **VOICE COMMANDS**

The voice command of the intercom allows you to perform certain operations using only the voice. You can control the intercom completely hands-free using the recognition vocal. You can set another language on the UNITE Interphone app. If you set a language that does not support voice commands, voice commands will only work in English. It's possible see the list of voice commands of another language from the Interphone UNITE app.

Voice command performance may vary depending on environmental conditions, such as the speed of riding, the type of helmet, and environmental noises.

To improve performance, minimize wind noise on the microphone using a foam microphone cover and closing the helmet visor. It is recommended to keep a normal tone of voice even in conditions of strong ambient noise, the command recognition has lower performance if commands come to say screaming loud if the microphone is too close or too far from the mouth.

| Action                          | Command                          |
|---------------------------------|----------------------------------|
| Start Mesh intercom             | Hey Interphone, Mesh On          |
| Stop Mesh intercom              | Hey Interphone, Mesh Off         |
| Set Open Mesh mode              | Hey Interphone, Open Mesh        |
| Set private Mesh mode           | Hey Interphone, Group Mesh       |
| Group creation for private Mesh | Hey Interphone, Mesh Grouping    |
| Action                          | Command                          |
| Bluetooth® intercom pairing     | Hey Interphone, Pairing Intercom |
| Connect intercom one            | Hey Interphone, Intercom one     |
| Connect intercom two            | Hey Interphone, Intercom two     |
| Connect intercom three          | Hey Interphone, Intercom three   |
| Stop intercom                   | Hey Interphone, end Intercom     |
| Action                          | Command                          |
| Phone pairing                   | Hey Interphone, phone pairing    |
| Answer a phone call             | Hello                            |
| Reject a phone call             | Ignore                           |
| Start Google assistant          | Hey Google                       |
| Start Siri                      | Hey Siri                         |
| Action                          | Command                          |
| Music play via Bluetooth ®      | Hey Interphone, play music       |
| Music stop                      | Hey Interphone, stop the music   |
| Start FM radio                  | Hey Interphone, FM radio on      |
| Stop FM Radio                   | Hey Interphone, FM radio off     |
| Track/Station next              | Hey Interphone, next             |
| Track/Station previous          | Hey Interphone, previous         |
| Check battery level             | Hey Interphone, check battery    |
| Increase listening volume       | Hey Interphone, volume up        |
| Decrease listening volume       | Hey Interphone, volume down      |

## FUNCTION PRIORITY AND FIRMWARE UPGRADES

### Function Priority

The headset prioritizes connected devices in the following order:

1. (Highest) Mobile phone
2. Voice command mode
3. Mesh Intercom/ Bluetooth® Intercom
4. Music sharing via Bluetooth® stereo
5. FM radio
6. Bluetooth® stereo music

A lower-priority function gets interrupted by a higher-priority function. For example, stereo music will be interrupted by an Intercom Conversation; an Intercom Conversation will be interrupted by an incoming mobile phone call.

## Firmware Upgrades

The headset supports firmware upgrades. Using the Device Manager utility (available for PC and MAC on [www.interphone.com](http://www.interphone.com)) you can upgrade firmware.

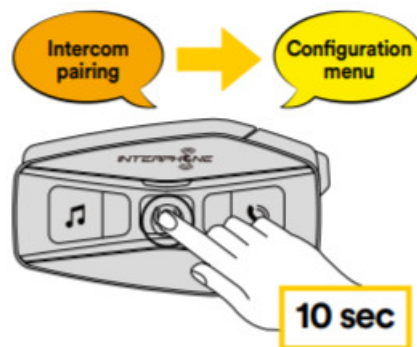
The USB Power & Data Cable (USB-C) must be connected to your computer, then start Device Manager on the computer and follow instructions step by step.

Interphone Unite APP can check the firmware version present on the headset and inform you in case of a newer available firmware, but APP can't flash the new firmware to the headset.

## CONFIGURATION SETTING

### Headset Configuration Setting

With U-COM 16 on, press and hold the central button for 10 seconds, to enter the settings menu. Don't release the button until the led light is blue.



To navigate through the settings, press the MUSIC button or the PHONE button.

1. Phone pairing
2. Second Mobile Phone Pairing
3. Phone selective pairing (pair a device with HFP profile only)
4. Media selective pairing (pair a device with the A2DP profile only)
5. GPS pairing

To confirm the following configuration menu options, press the CENTER

6. Delete all pairings
7. Anycom pairing
8. Factory reset



## 9. Exit

### Delete all pairings

Delete all Bluetooth® pairings stored in the device.

### Device settings

You can change the device settings from the Device Manager utility (available for PC and MAC on [www.interphone.com](http://www.interphone.com)) or from the Interphone UNITE app.

Attention: the setting “Advanced Features” will enable the following headset features:

- The private MESH mode called “GROUP MESH”
- Reset Mesh
- Phone multiple speed dial
- Conference intercom + phonecall
- Smart FM stations seek

### Speed dial

Assign phone numbers for speed dialing to make a phone call quickly.

### Channel Setting (Default: Channel 1)

If the Open-Mesh communication experiences interference because other groups are also using the channel 1 (default), change the channel. You can select one of 1 to 9 channels.

### Unit Language

You can select the device language. The selected language is maintained even when the headset is rebooted

### Audio Equalizer (Default: Off)

You can use the Audio Equalizer to increase/decrease the decibel level of different frequency ranges of audio.

- The balance will adjust all of the frequency ranges to be the same volume level (0 dB).
- Bass Boost will increase the bass range of audio (20 Hz – 250 Hz).
- Mid Boost will increase the mid-range of audio (250 Hz – 4 kHz).
- Treble Boost will increase the high range of audio (4 kHz – 20 kHz).

### VOX Phone (Default: Enable)

If this feature is enabled, you can answer incoming calls by voice. When you hear a ringtone for an incoming call, you can answer the phone by saying a word such as “Hello” loudly or by blowing air into the microphone.

VOX phone is temporarily disabled if you are connected to the intercom. If this feature is disabled, you have to tap the Center Button to answer an incoming call.

### VOX Intercom (Default: Disabled)

If VOX Intercom is enabled, you can initiate an intercom conversation with the last connected intercom by voice. When you want to start the intercom, say a word such as “Hello” loudly or blow air into the microphone. If you start an intercom conversation by voice, the intercom terminates automatically when you and your intercom friend remain silent for 20 seconds. However, if you manually start an intercom conversation by tapping the Center Button, you have to terminate the intercom conversation manually. However, if you start the intercom by voice and end it manually by tapping the Center Button, you will not be able to start the intercom by voice temporarily. In this case, you have to tap the Center Button to restart the intercom. This is to prevent repeated unintentional intercom connections by strong wind noise. After rebooting the headset, you can start the intercom by voice again.

### **VOX Sensitivity (Default: 3)**

VOX sensitivity can be adjusted depending on your riding environment. Level 5 is the highest sensitivity setting and level 1 is the lowest.

### **Bluetooth® Intercom Audio Multitasking (Default: Disabled)**

Audio Multitasking ( Bluetooth® Intercom Audio Multitasking and Mesh Intercom Audio Multitasking) allows you to have an intercom conversation while simultaneously listening to music, FM radio, or GPS instructions. The overlaid audio is played in the background with reduced volume whenever there is an intercom conversation and will return to normal volume once the conversation is finished.

The Mesh Intercom Audio Multitasking feature is always on.

#### **Note:**

- For Bluetooth® Intercom Audio Multitasking to work properly, you need to power the headset off and on. Please restart the headset.
- Bluetooth® Intercom Audio Multitasking will be activated during two-way intercom conversations with a headset that also supports this feature.
- Some GPS devices may not support this feature.
- The Audio Multitasking feature can be configured through the Intercom- Audio Overlay Sensitivity and the Audio Overlay Volume Management settings.

### **Intercom-Audio Overlay Sensitivity (Default: 3)**

The music, FM radio, and GPS volume will be lowered to play in the background if you talk over the intercom while the overlaid audio is playing. You can adjust the intercom sensitivity to activate this background audio mode. Level 1 has the lowest sensitivity and level 5 has the highest sensitivity.

**Note:** If your voice is not louder than the sensitivity of the selected level, the overlaid audio will not be lowered.

### **Audio Overlay Volume Management (Default: Disabled)**

The music, FM radio and GPS overlaid audio reduce in volume whenever there is an ongoing intercom conversation. If Audio Overlay Volume Management is enabled, the volume level of the overlaid audio will not be reduced during an intercom conversation.

### **HD Intercom (Default: Enable)**

HD Intercom enhances the two-way intercom audio from normal quality to HD quality. HD Intercom will become temporarily disabled when you enter into a multi-way intercom. If this feature is disabled, the two-way intercom audio will change to normal quality.

#### **Note:**

- The intercom distance of HD Intercom is relatively shorter than the normal intercom.
- HD Intercom will become disabled temporarily when Bluetooth® Intercom Audio Multitasking is enabled.

### **HD Voice (Default: Enable)**

HD Voice allows you to communicate in high-definition during phone calls.

This feature increases the quality so that the audio will be crisp and clear during phone call conversations.

Three-Way Conference Phone Calls with Intercom participants will not be available if HD Voice is enabled.

### **Note:**

- Refer to the manufacturer of your Bluetooth® device that will be connected to the headset to see if it supports HD Voice.
- HD Voice is active only when Bluetooth® Intercom Audio Multitasking is disabled.

### **Smart Volume Control (Default: Disabled)**

Enabling Smart Volume Control automatically changes the level of the speaker's volume based on the level of the environment noise. You can enable it by setting the sensitivity to low, medium, or high.

### **Sidetone (Default: Disabled)**

Sidetone is audible feedback of your own voice. It helps you to naturally speak at the correct level according to varying helmet noise conditions.

If this feature is enabled, you can hear what you are speaking during an intercom conversation or a phone call.

### **Voice Prompt (Default: Enable)**

You can disable voice prompts by software configuration settings, but the following voice prompts are always on.

– Headset configuration settings menu, battery level indicator, speed dial, FM radio functions.

### **RDS AF Setting (Default: Disabled)**

Radio Data System (RDS) Alternative Frequency (AF) Setting allows a receiver to re-tune to the second frequency location when the first signal becomes too weak. With RDS AF enabled on the receiver, a radio station with more than one frequency can be used.

### **FM Station Guide (Default: Enable)**

When FM Station Guide is enabled, FM station frequencies are given by voice prompts as you select preset stations. When FM Station Guide is disabled, the voice prompts on FM station frequencies will not be given as you select preset stations.

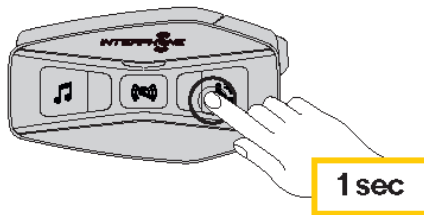
### **Advanced Noise Control™ (Default: Enable)**

When Advanced Noise Control is enabled, the background noise is reduced during an intercom conversation.

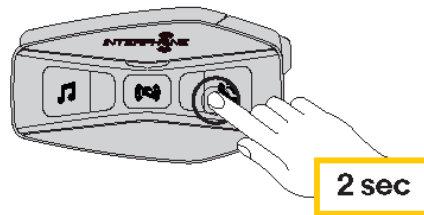
When it is disabled, the background noise is mixed with your voice during the intercom.

## **Phone**

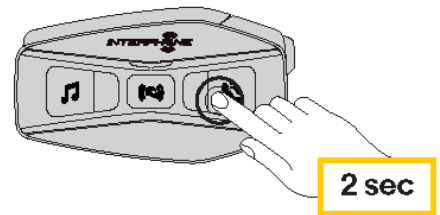
Incoming call answer



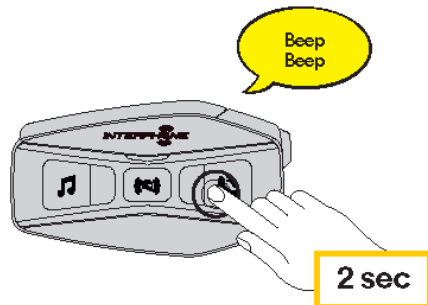
End call



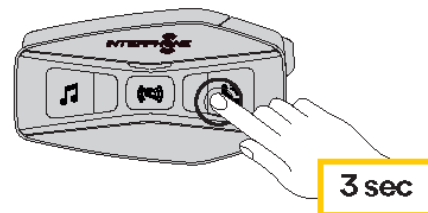
Reject incoming call



Phone assistant trigger

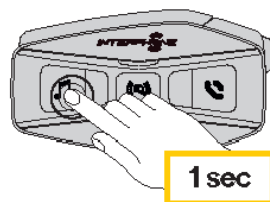


Speed dial

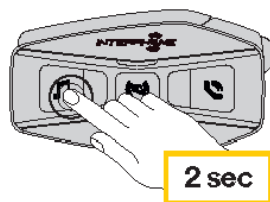


## Music and FM radio

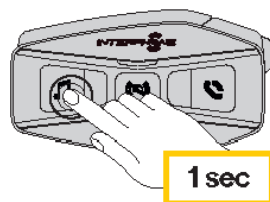
Music play



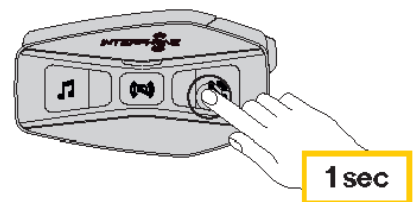
Music pause



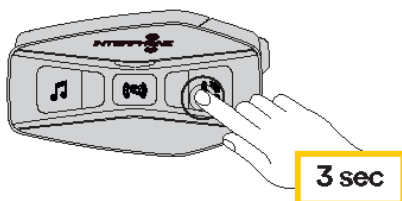
Next track



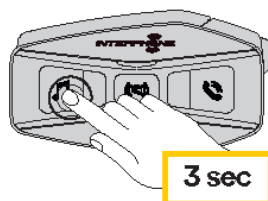
Previous track



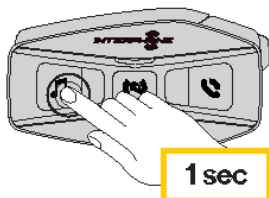
Start/stop music sharing



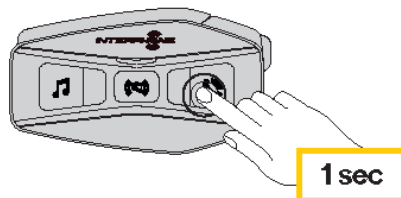
Start/stop FM radio



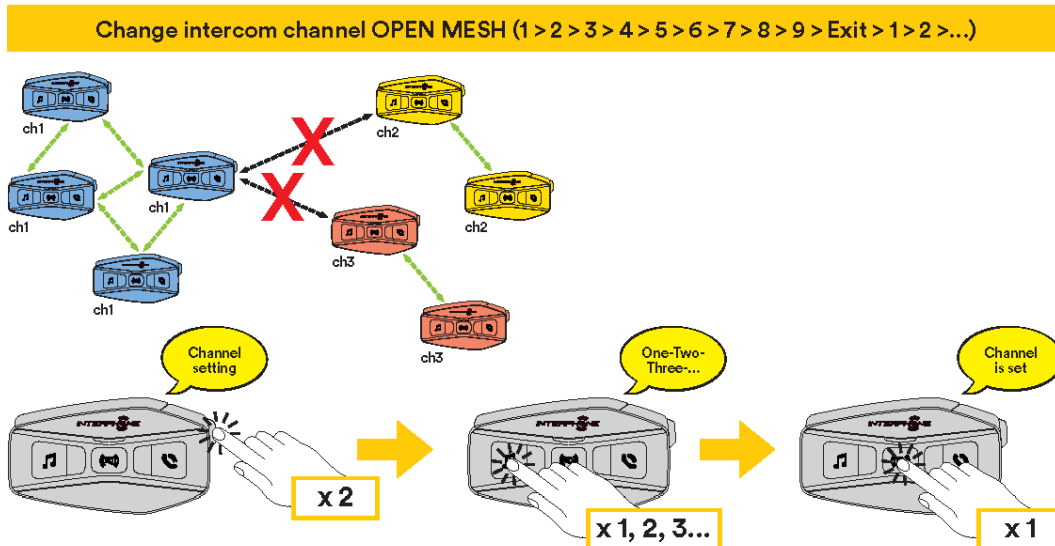
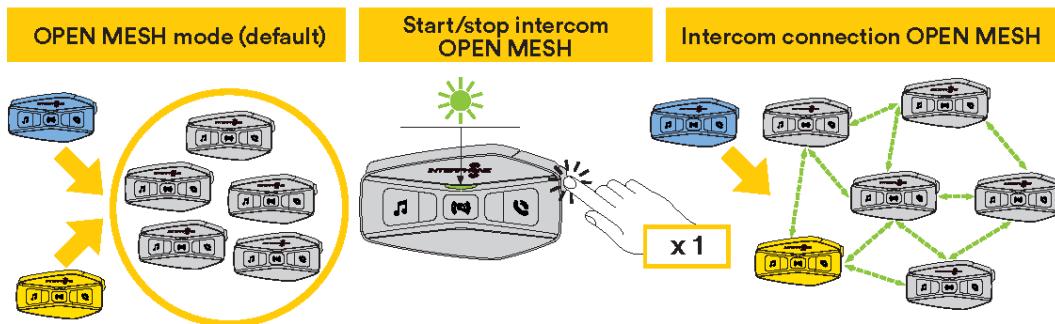
Next station



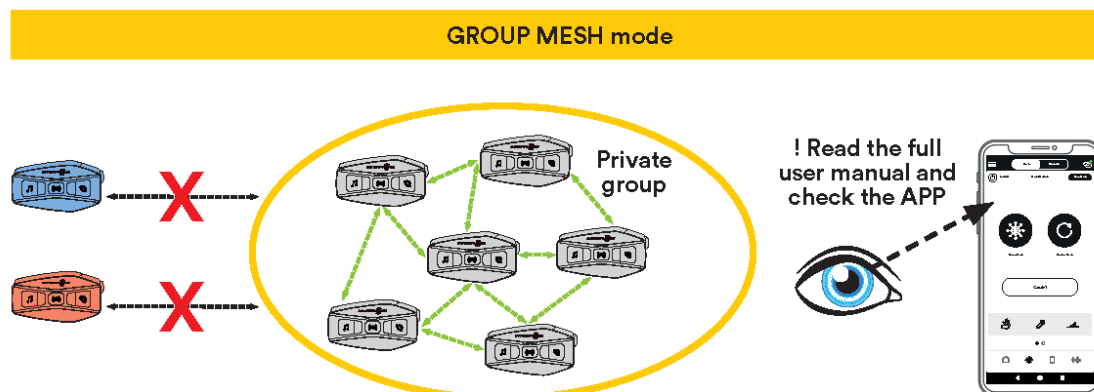
Previous station



## Mesh Intercom – OPEN MESH

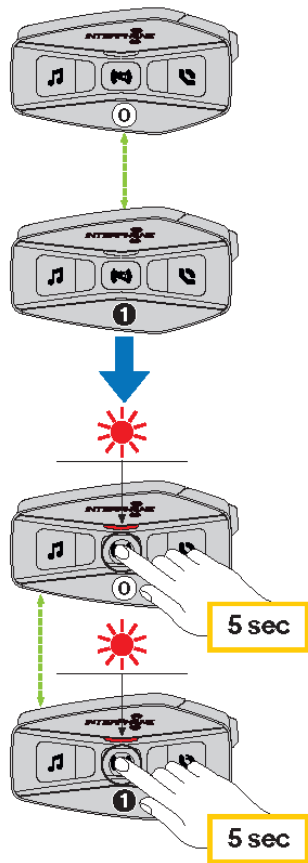


## Mesh Intercom – GROUP MESH

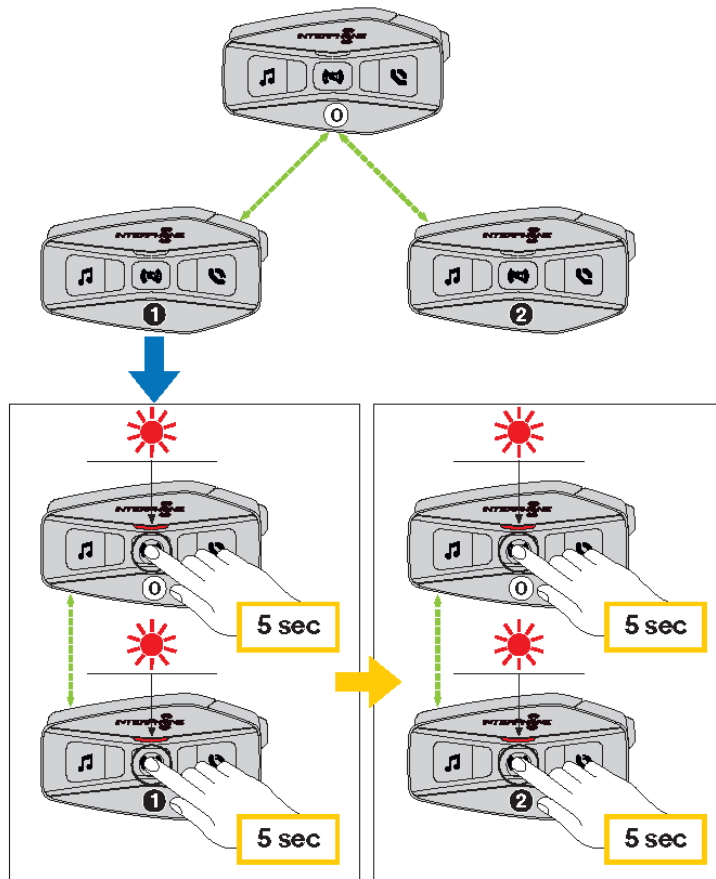


## Bluetooth® Intercom – pairing

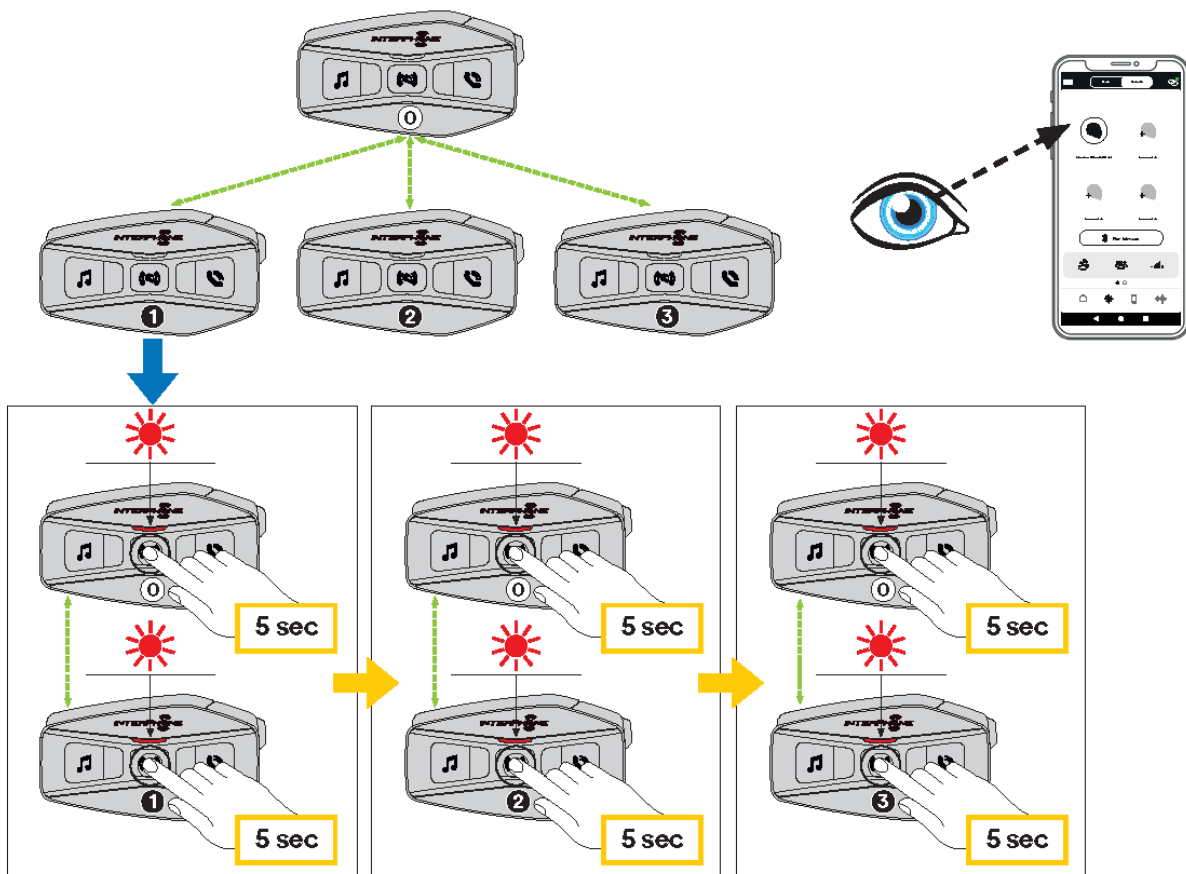
### Intercom pairing 2 units



### Intercom pairing 3 units

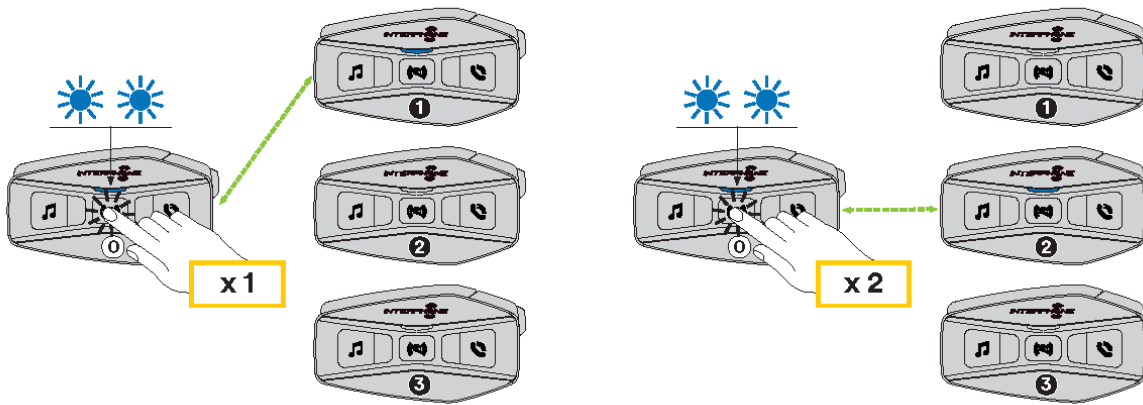


### Intercom pairing 4 units

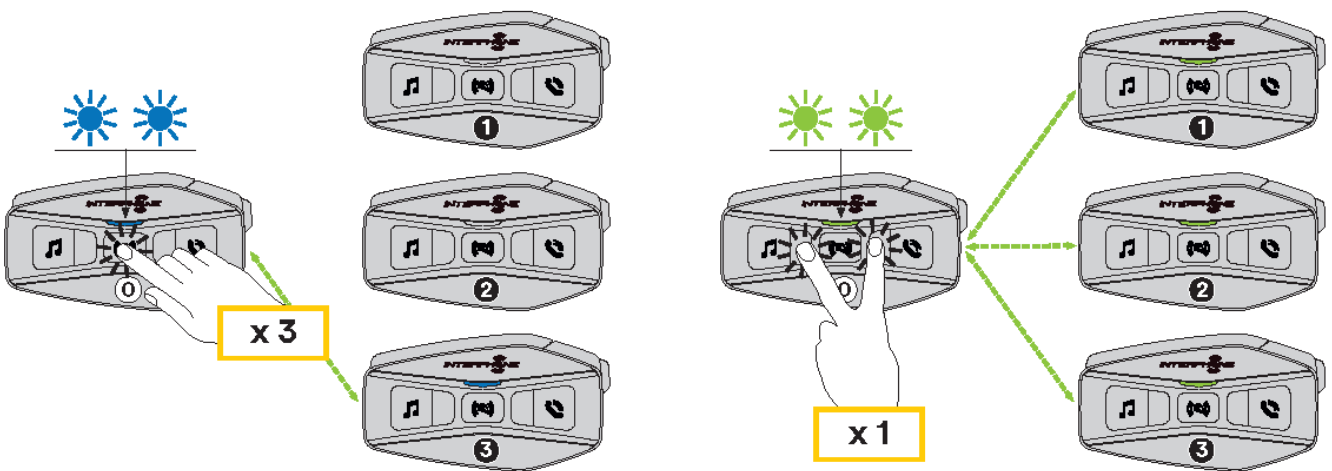




## Intercom conference

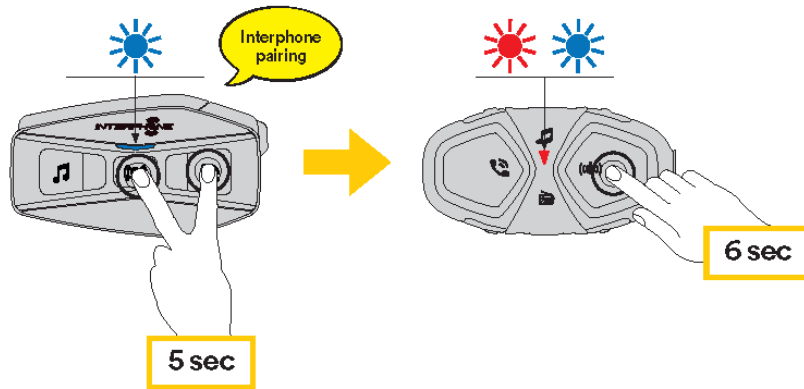


## Intercom group conference

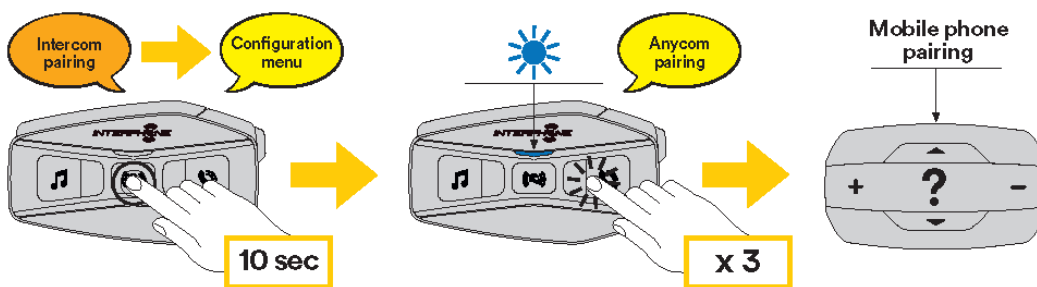


Bluetooth® Intercom – other pairings

## Other Interphone series pairing (to be done with unit OFF)



## Anycom pairing for other brands (except Sena)



## TROUBLESHOOTING

Please visit [www.interphone.com](http://www.interphone.com) for video tutorials and answers to frequently asked questions.

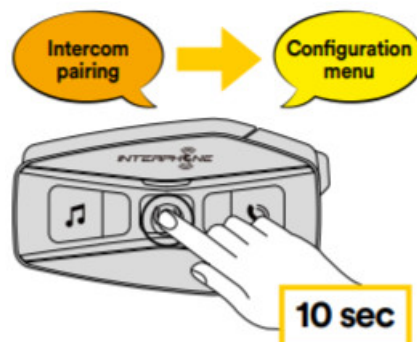
### Fault reset

When the intercom does not work properly, it is possible to reset the unit easily, simply by disconnecting the battery for a few seconds.

**Note:** Reset after error will not restore the intercom to factory settings.

### Factory reset

To erase all of your settings and start fresh, the headset can be restored to factory default settings using the Factory Reset feature.




With U-COM 16 on, enter the configuration menu by pressing the power key for 10 seconds. Be careful not to release the button before the LED turns Setup blue, you will hear the message confirming the activation of the configuration menu.

Press the PHONE button twice until you hear the message "Factory reset", press the CENTRAL button to confirm.

A voice announcement will be issued to confirm: “Reset headphones, goodbye”.

**Documents / Resources**

|   |   |
|---|---|
|  | <p><a href="#">INTERPHONE U-COM 16 Motorcycle Intercom</a> [pdf] User Manual</p> <p>U-COM 16, Motorcycle Intercom, U-COM 16 Motorcycle Intercom, Intercom</p> |
|---|---|