

INTERPHONE
stay in touch
**SYNC70E Essential Smart
Display**



INTERPHONE SYNC70E Essential Smart Display User Manual

[Home](#) » [Interphone](#) » INTERPHONE SYNC70E Essential Smart Display User Manual 

Contents

- [1 INTERPHONE SYNC70E Essential Smart Display](#)
- [2 Specifications](#)
- [3 Product Usage Instructions](#)
- [4 Introduction](#)
- [5 Safety and Warnings](#)
- [6 Installation](#)
- [7 Usage](#)
- [8 Settings](#)
- [9 Frequently Asked Questions](#)
- [10 Documents / Resources](#)
 - [10.1 References](#)

INTERPHONE
stay in touch

INTERPHONE SYNC70E Essential Smart Display



Specifications

- Product: INTERPHOSYNC70E
- Model: SYNC70
- Dimensions mm: 184.2 x 117 x 31.2
- Power supply: 5V DC – 2.5A
- Weight: 419.5 g
- Power Bluetooth: 20dBm
- Frequency WIFI: 2.4G (2400MHz ~ 2500MHz) / 5G (5150Mhz ~5250Mhz)
- Power: Wi-Fi 20 dBm

Product Usage Instructions

Installation and Mounting:

Overview:

The SYNC70E package includes the main unit, main cable, power supply cables, handlebar adapter spacers, handlebar Quiklox mount, and tools.

Installation Steps:

1. Choose the suitable spacer and install the mount on the handlebar.
2. Screw and tighten the mount securely.
3. To adjust the mount, unscrew, rotate, and then screw it back into place.

Wiring Instructions

Wiring to Motorcycle 12V Power Supply:

Yellow Wire (BATT) connects to a permanent +12V power source, Black Wire (GND) connects to a ground point, and Red Wire (ACC) connects to a switched +12V source.

Wiring to USB Power Supply:

Use the provided USB cable to power the device from a USB-A or USB-C power socket. Ensure to use a 2.5A / 12.5W power source for optimal performance.

Usage:

Home Screen:

- Tap on Carplay/Android Auto for phone pairing and access.
- Tap on the Settings screen menu to access device settings.
- Tap on Odometer for the odometer screen, long tap to reset the odometer.
- Compass display.
- GPS signal status indication.

- Clock display.

Odometer Screen:

To reset the total odometer on SYNC70E, perform a long tap on the odometer displayed on the main screen.

Carplay & Android Auto:

To pair with your smartphone, connect SYNC70E to power, enable Bluetooth and Wi-Fi on your smartphone, and press Carplay icon for Apple or Android Auto for Android smartphones as shown on the screen. Follow on-screen instructions for pairing.

Introduction

- SYNC70E is a 7-inch Smart Display designed for riders, featuring a highvisibility
- IPS touch screen with anti-rain drop activation. It seamlessly connects via Apple CarPlay and Android Auto for navigation, calls, and media control.
- IP66 waterproof and Quiklox mount provide durability and easy installation

Safety and Warnings

- Failure to follow instructions may result in death, serious injury, or device damage. Incorrect setup or use increases these risks. Use with caution and stay focused while driving. Minimize screen interaction and comply with laws of your region. Cellularline S.p.A. is not liable for fines due to noncompliance.

Correct mounting

- Ensure the device does not obstruct your view, vehicle control, block any safety function or dashboard instruments.
- Use of audio systems (Bluetooth Intercoms)
- This device does not support Bluetooth headsets or intercoms. Connect your mobile phone directly to a Bluetooth headset for concurrent use.

Water resistance

- IP67 waterproof when correctly installed and used. Do not immerse in water.

General guidelines

- SYNC70E mirrors apps via CarPlay & Android Auto. It has GPS for the odometer but isn't a navigator. It's not a music player. The touchscreen may not work with gloves or rain. Do not open it; it's dangerous and voids the warranty. Clean with a soft cloth only.

Technical Specifications:

- CE Declaration of Conformity: Cellularline S.p.A. declares that this device complies with Directive 2014/53/EU.

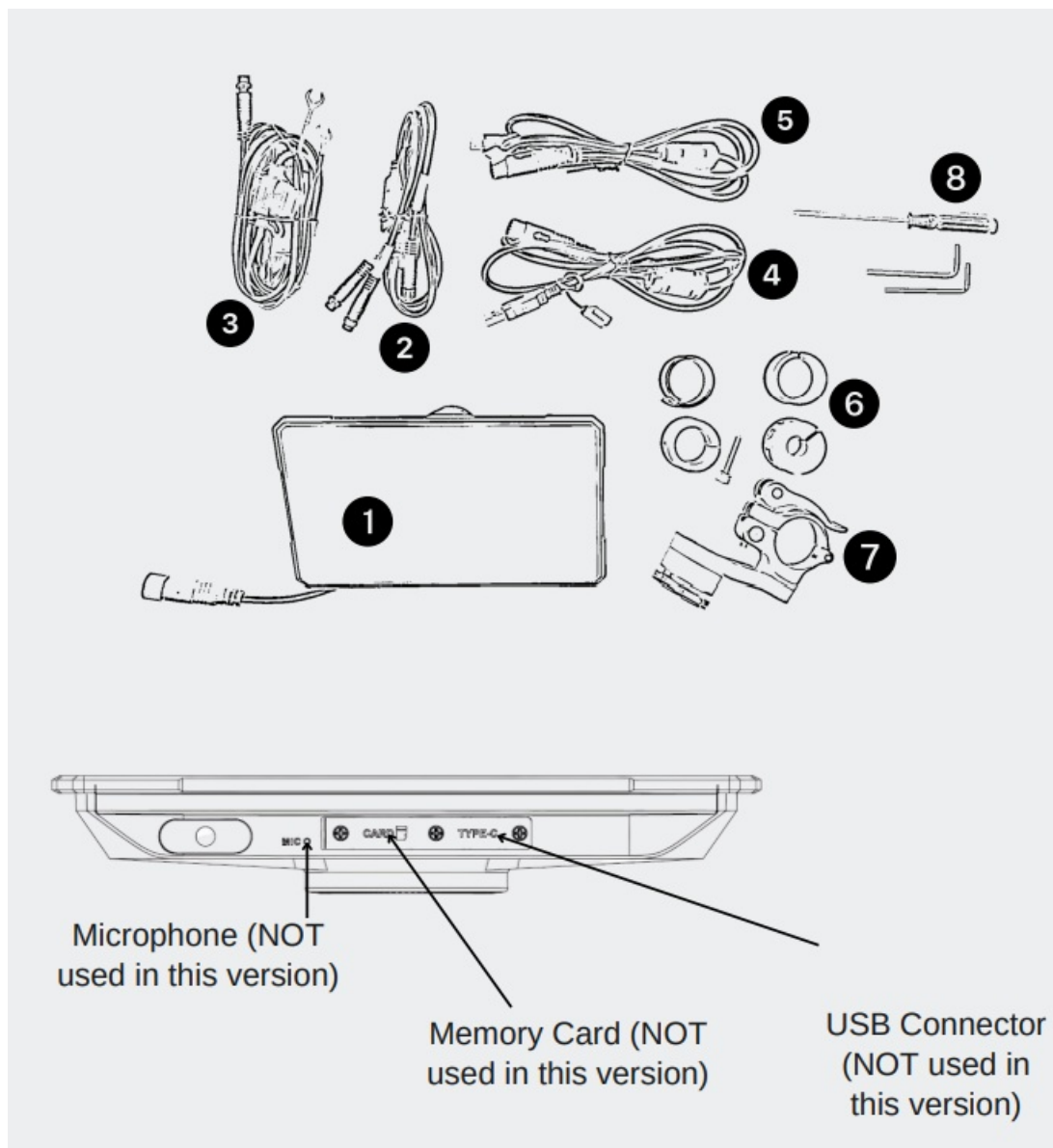
The full text of the EU declaration of conformity is available at the following address:

www.cellularline.com/_/declaration-of-conformity. Cellularline S.p.A. also declares that this device complies with the 2011/65/EU updated from 2015/863/EU.

Product: INTERPHOSYNC70E	Model: SYNC70	Operating temperature: -20~70°C
Dimensions mm: 184.2 x 117 x 31.2	Power supply: 5V DC - 2,5A	Weight: 419,5 g
Bluetooth® v. 4.2 - Class 2	Frequency Bluetooth: 2.402 – 2.480GHz	Power Bluetooth: 20dBm
Frequency WIFI : 2.4G (2400MHz ~ 2500MHz) / 5G (5150Mhz~5250Mhz)	Power: Wi-Fi 20 dBm	

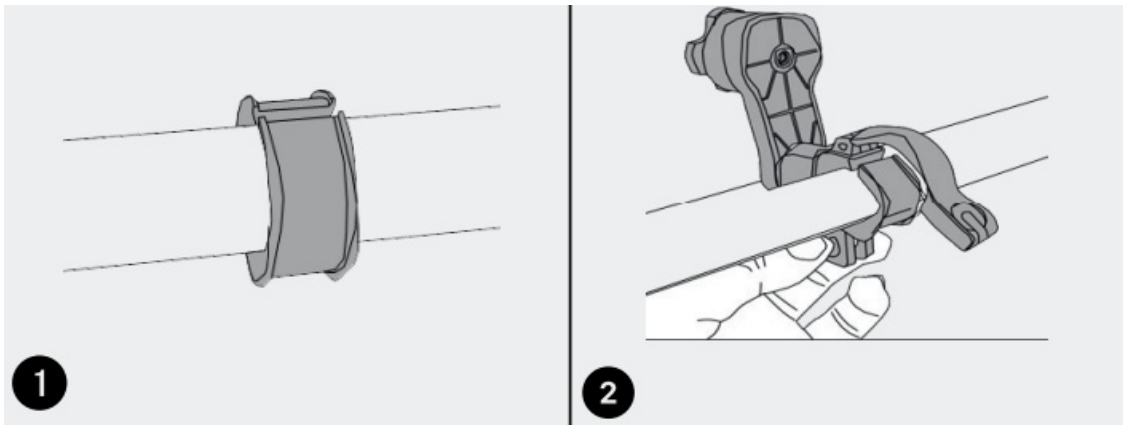
- WEEE: The crossed-out wheel bin symbol on the product, literature, or packaging reminds you that all electrical and electronic products, batteries, and accumulators must be taken to separate collection at the end of their working life.
- This requirement applies to the European Union and other locations where separate collection systems are available.
- To prevent possible harm to the environment or human health from uncontrolled waste disposal, please do not dispose of these products as unsorted municipal waste, but hand it in at an official collection point for recycling.

Installation

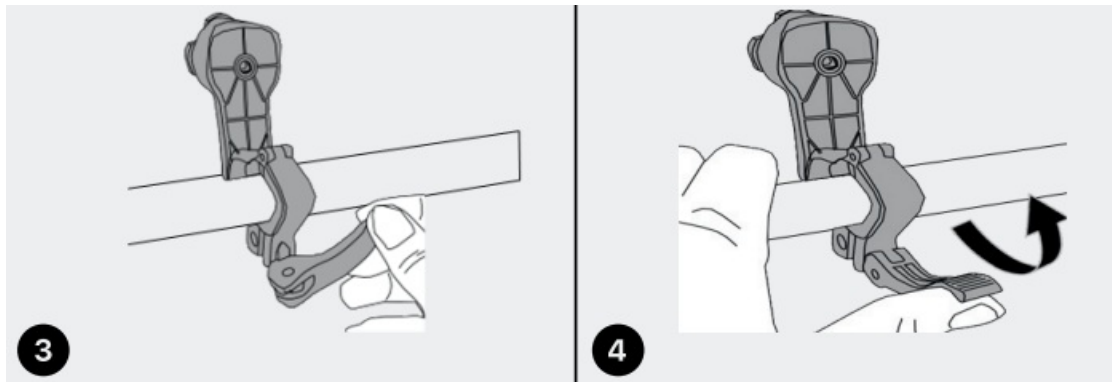


1. SYNC70E main unit
2. Main cable
3. 12V Power supply cable
4. USB-A Power supply cable
5. USB-C Power supply cable
6. Handlebar adapter spacers 12-22-24.5-28mm
7. Handlebar Quiklox mount
8. Tools

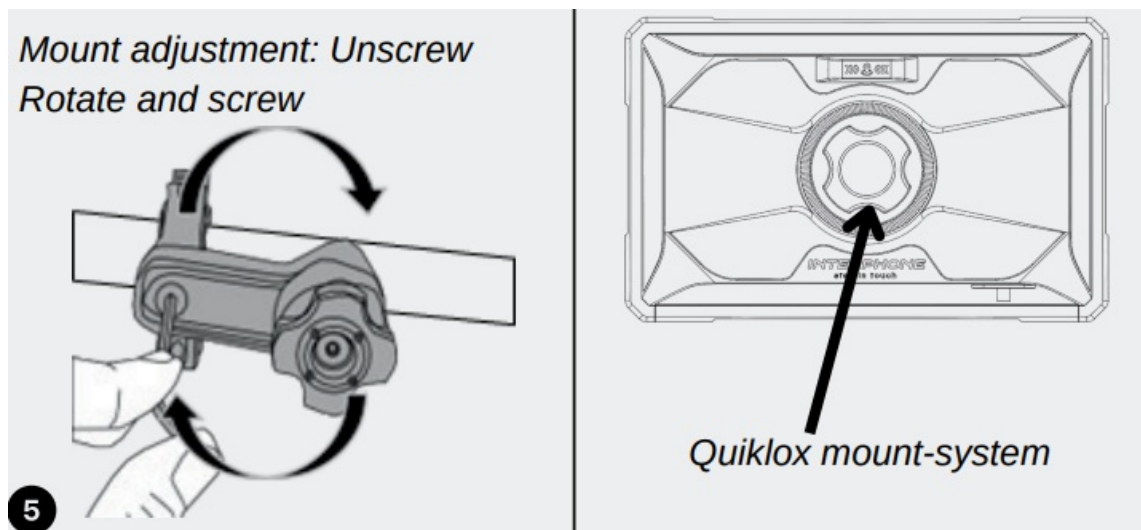
- SYNC70E is compatible with all Interphone Quiklox mounts, allowing multiple installation options, including handlebar clamp, sportbike steering stem, mirror, crossbar, brake reservoir, and car mount. Visit www.interphone.com for more details



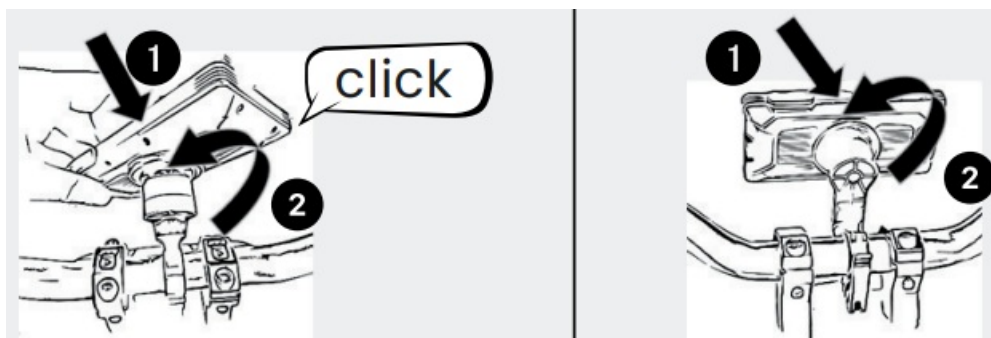
1. Choose the suitable spacer and apply it on the handlebar/bar
2. Install the mount on the rubber spacer



3. Screw and tighten
4. Lock

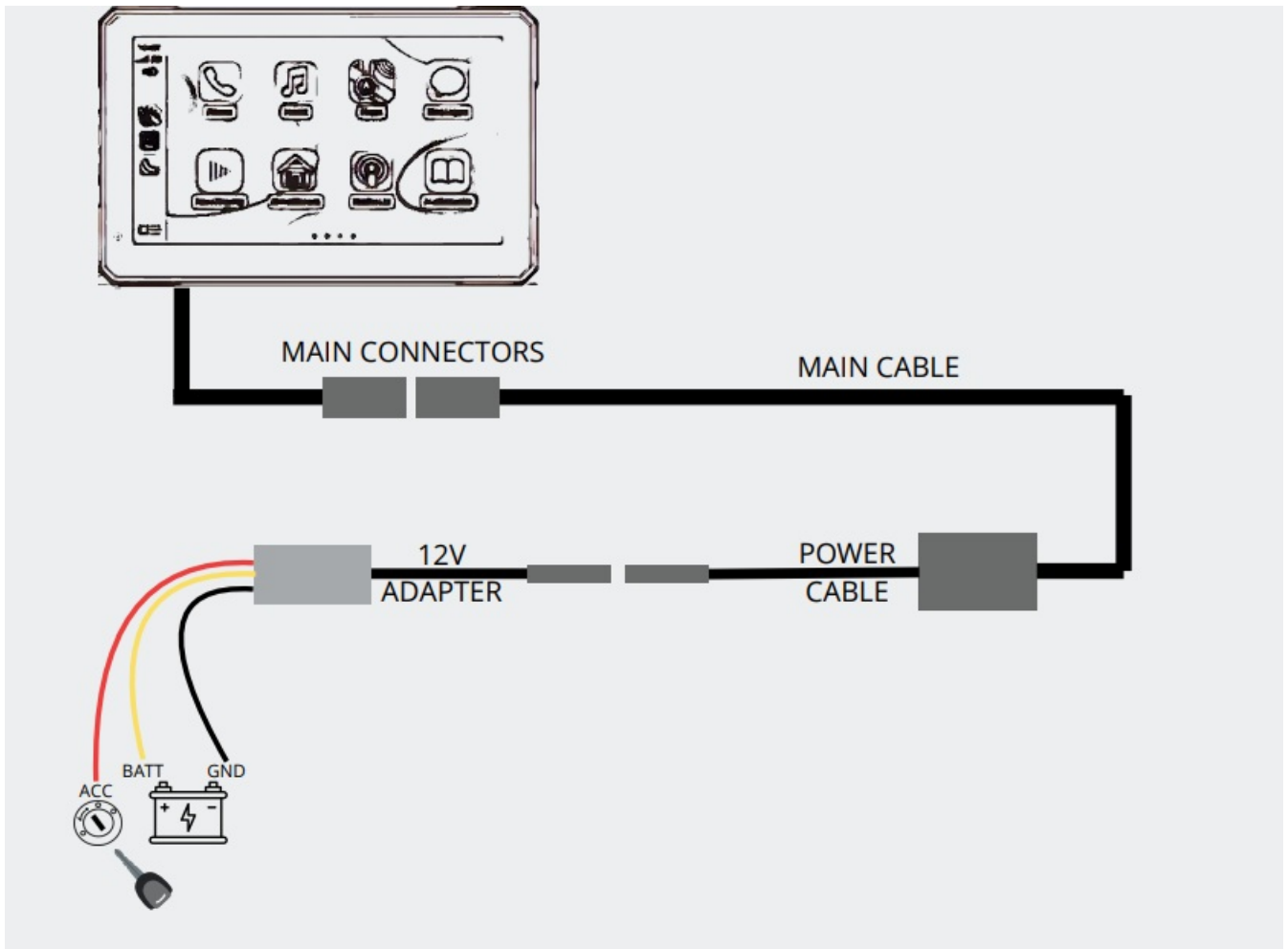


5. Mount adjustment: Unscrew Rotate and screw



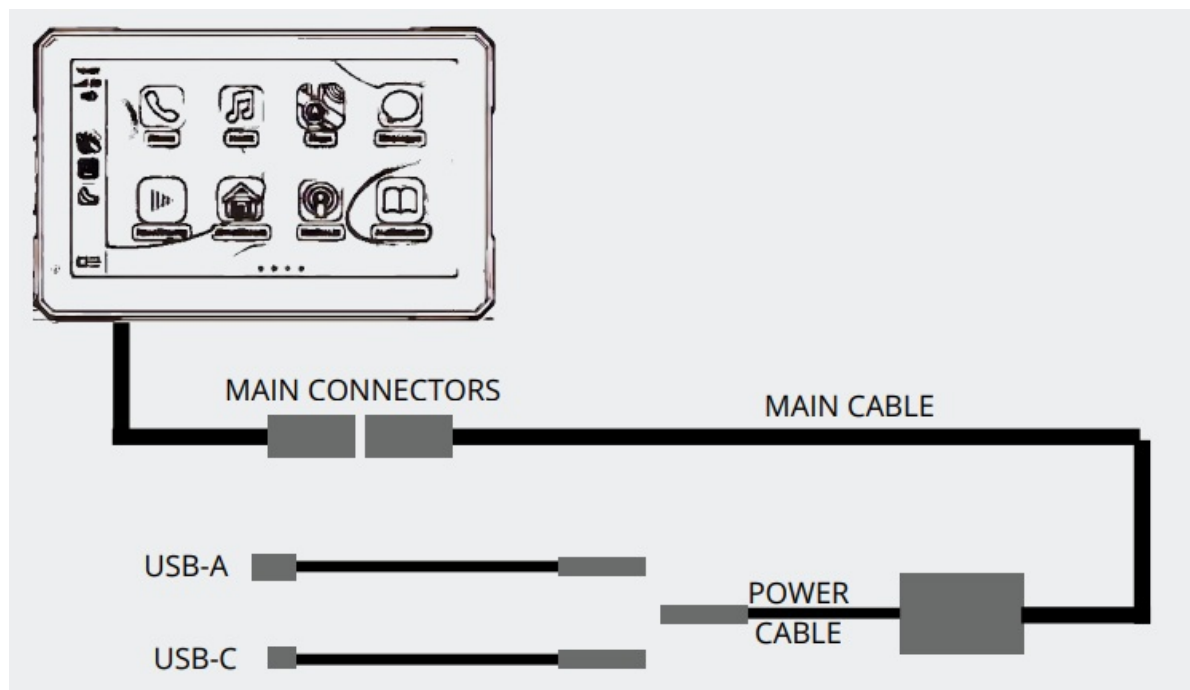
- To lock: insert, push, and rotate 45 degrees CW or CCW to lock
- To release: Push and rotate 45 degrees CW or CCW to remove the device from the mount

Wiring to motorcycle 12V power supply



- Yellow Wire (BATT): Connect to a permanent +12V power source, such as the positive terminal of the motorcycle battery (+).
- Black Wire (GND): connect to a ground point on the motorcycle frame or directly to the negative terminal of the battery (-).
- Red Wire (ACC): Connects to a switched +12V source, which is active only when the motorcycle key is in the ACC position or when the dashboard is on.

Wiring to USB power supply



- Use the provided USB cable to power the device from the USB-A or USB-C power socket.
- Use only a 2,5A / 12,5W power source for optimal performance. Lower power source may cause malfunctions

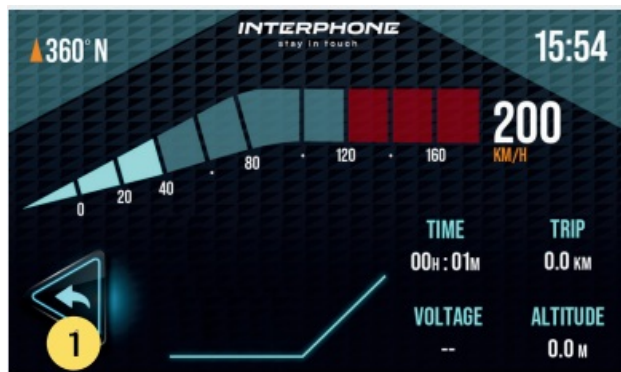
Usage

Home screen



1. Carplay/Android Auto: tap on first time for phone pairing, then tap to access carplay/Android Auto screen
2. Setting screen menu: tap to access device's settings
3. Odometer: tap to access the odometer screen, long tap to reset the odometer
4. Compass
5. GPS signal status
6. Clock

Odometer screen



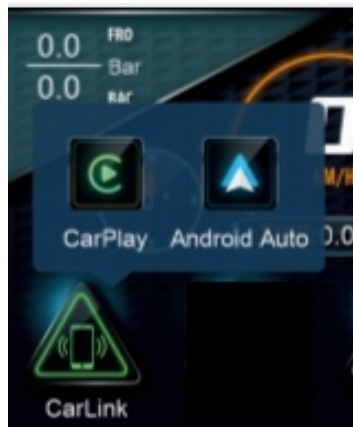
1. Back: tap to go back to the Home screen



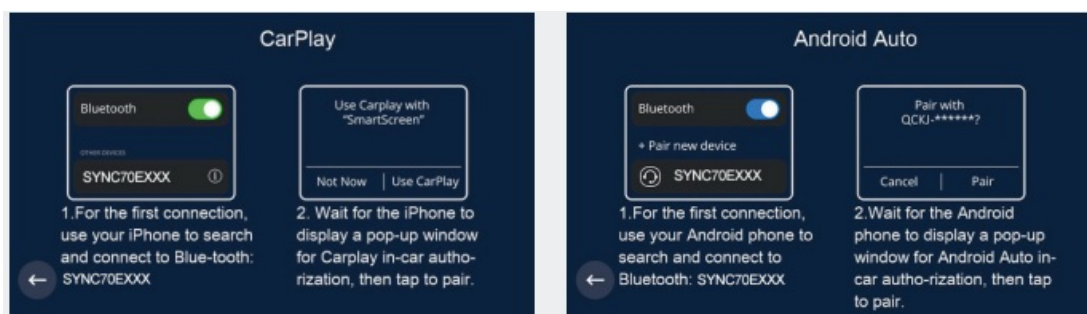
- Note: the odometer on SYNC70E is a total (not partial) odometer.
- To reset it, it's necessary to do a long tap on the odometer on the main screen

Carplay & Android Auto

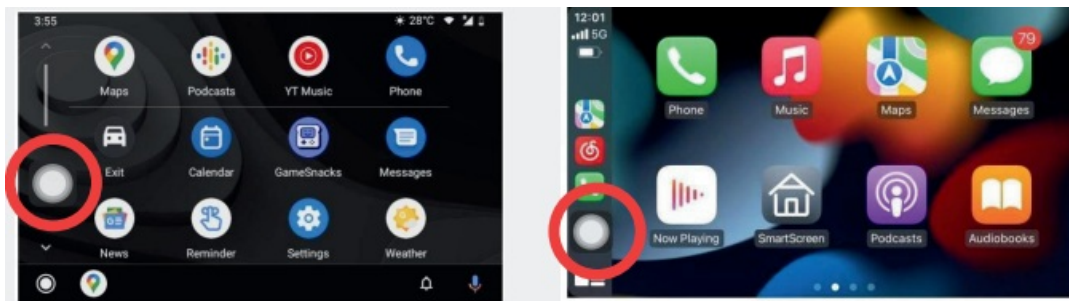
First Use



- SYNC70E needs to be paired with your smartphone only during the initial setup.
- To proceed with pairing, after connecting SYNC70E to power and enabling Bluetooth and Wi-Fi functions on your smartphone, press the “Carplay” icon for Apple smartphones or “Android Auto” for Android smartphones as illustrated on the screen. On the next screen, follow the prescribed instructions

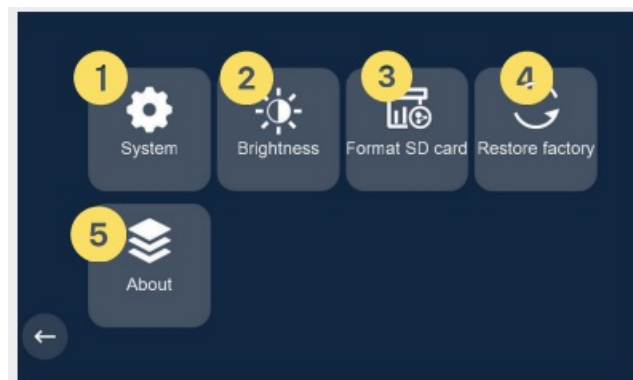


- Tap on the circle spot to activate the Shortcut Menu



Settings

Main settings screen



1. General system setting
2. Brightness settings
3. Format SD card
4. Restore factory settings
5. Check installed firmware version

System settings



1. Switch on/off the Floating button to quick access shortcut menu
2. Set time zone
3. Set speed unit
4. Set screen sleep time (10"/30"/60"/OFF)

5. Check available space on SD Card
6. Set language
7. Set date & time
8. Check GPS status

Frequently Asked Questions

- **Q: Can SYNC70E be used in heavy rain?**
 - A: Yes, SYNC70E is IP66 waterproof, making it suitable for use in heavy rain conditions.
- **Q: What is the power requirement for optimal performance?**
 - A: The device requires a 5V DC – 2.5A power supply for optimal performance.

Documents / Resources

	<p>INTERPHONE SYNC70E Essential Smart Display [pdf] User Manual INTERPHOSYNC70E, SYNC70, SYNC70E Essential Smart Display, SYNC70E, Essential Smart Display, Smart Display, Display</p>
---	--

References

-  [Declaration of conformity | Cellularline Site WW](#)
-  [INTERPHONE](#)
- [User Manual](#)

[Manuals+](#), [Privacy Policy](#)

This website is an independent publication and is neither affiliated with nor endorsed by any of the trademark owners. The "Bluetooth®" word mark and logos are registered trademarks owned by Bluetooth SIG, Inc. The "Wi-Fi®" word mark and logos are registered trademarks owned by the Wi-Fi Alliance. Any use of these marks on this website does not imply any affiliation with or endorsement.