




## Intermec CN50 Ethernet Multidock Instructions

[Home](#) » [Intermec](#) » Intermec CN50 Ethernet Multidock Instructions 

### Contents

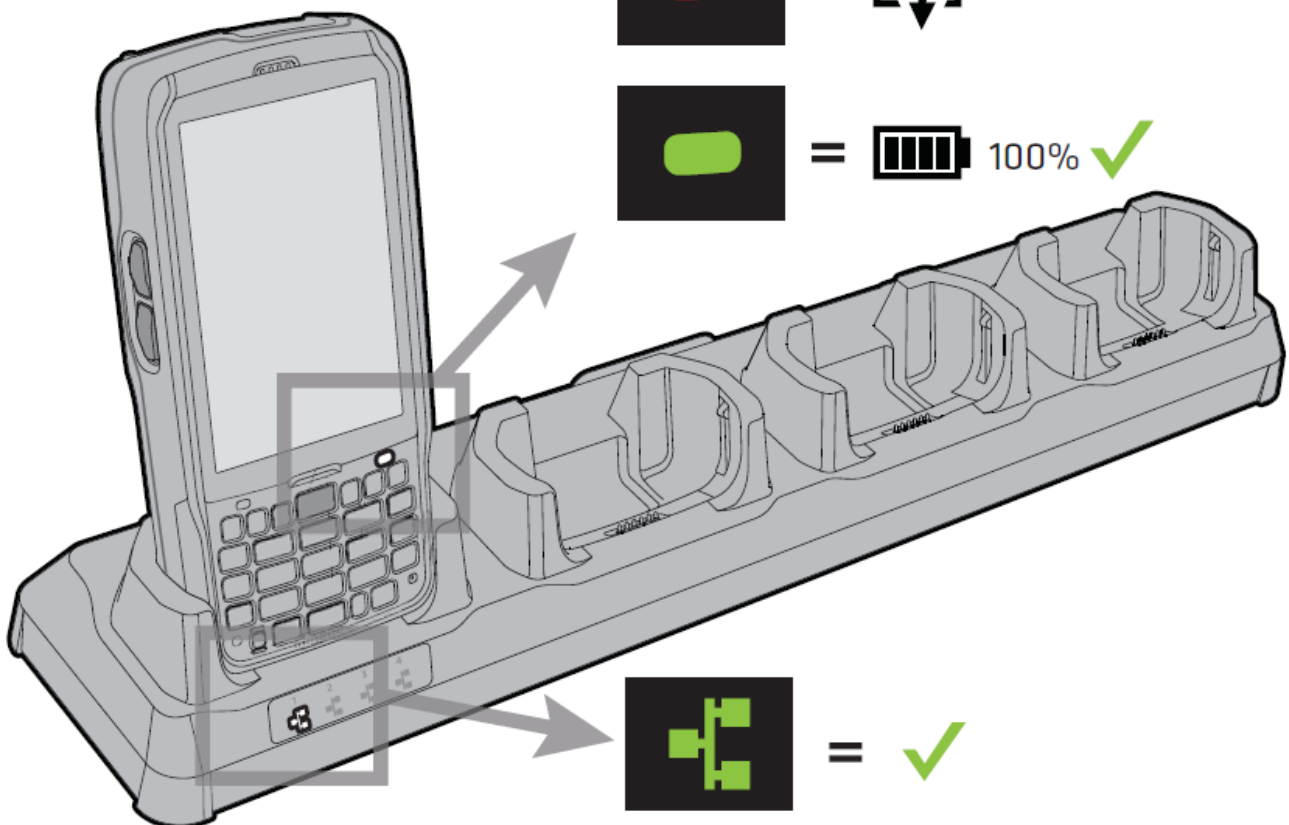
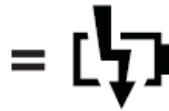
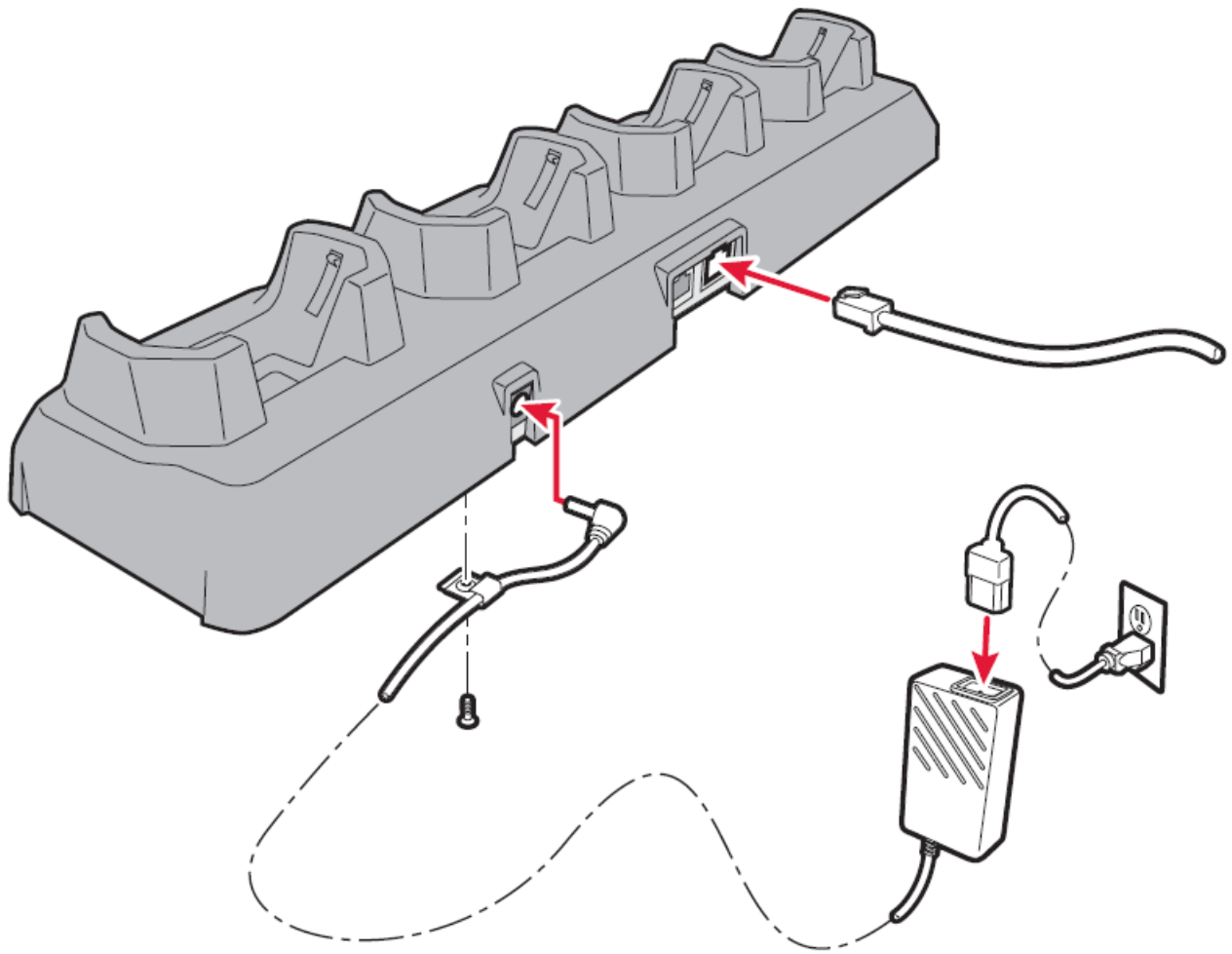
- [1 Intermec CN50 Ethernet Multidock](#)
- [2 Ethernet Multidock Instructions](#)
- [3 Documents / Resources](#)
  - [3.1 References](#)
- [4 Related Posts](#)



### Intermec CN50 Ethernet Multidock

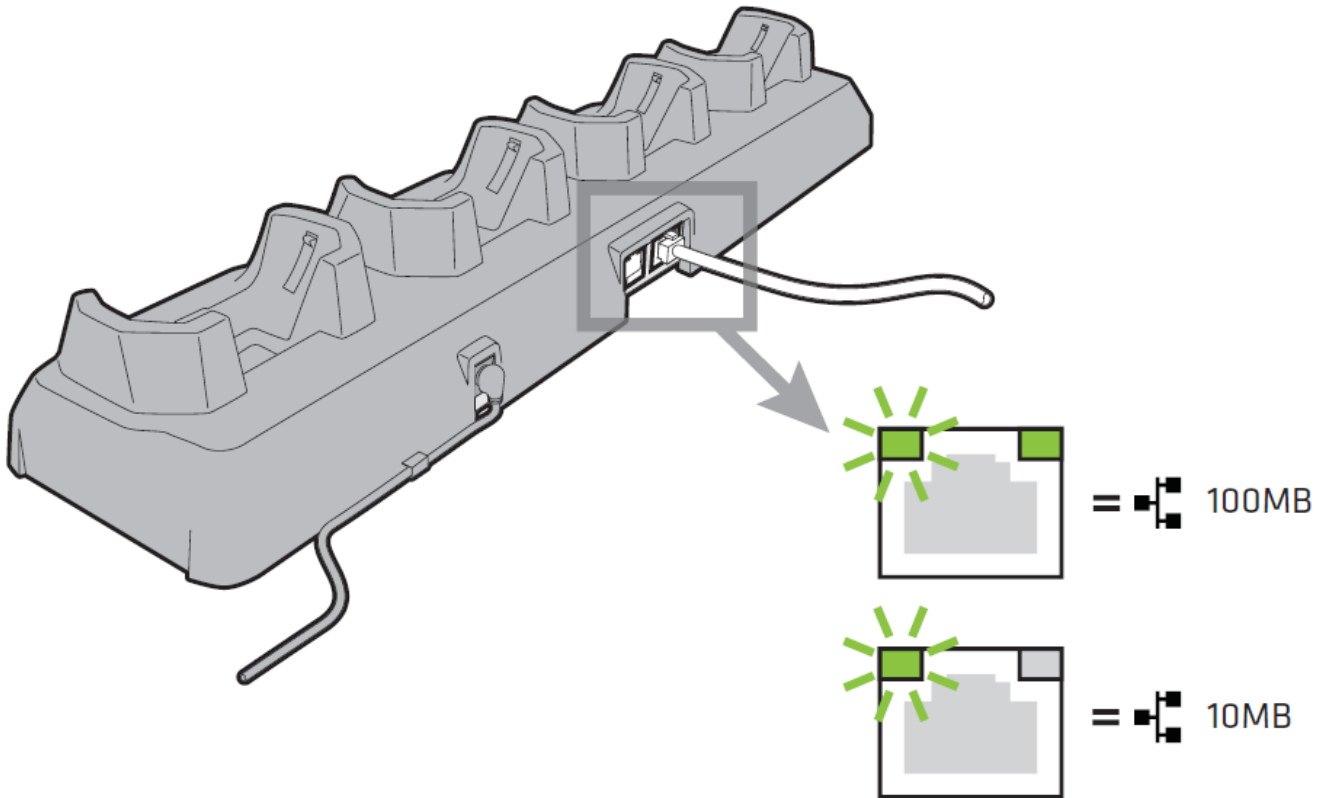


## Ethernet Multidock Instructions



You also need these items (sold and ordered separately):

- For the United States, use only UL Listed power supply, which has been qualified by Intermec with output rated at 12 VDC and 5 A with the device. For Canada, use only UL Listed power supply, which has been qualified by Intermec with output rated at 12 VDC and 4 A with the device.
- A country-specific AC power cord
- Ethernet cables



**Caution:** See Compliance Insert for restrictions associated with this product.

16201 25th Avenue West  
Lynnwood, Washington 98087

**U.S.A.**

[www.honeywellaidc.com](http://www.honeywellaidc.com)

Copyright © 2016

Honeywell International Inc.

All rights reserved.

**Documents / Resources**



[Intermec CN50 Ethernet Multidock](#) [pdf] Instructions  
CN50, CN51, CN50 Ethernet Multidock, CN50, Ethernet Multidock, Multidock

## References

- [H Safety and Productivity Solutions | Honeywell](#)