



INTERLIGHT LED Lamp User Manual

[Home](#) » [INTERLIGHT](#) » INTERLIGHT LED Lamp User Manual 

Contents

- [1 INTERLIGHT LED Lamp User Manual](#)
- [2 DOWNLIGHTS](#)
- [3 Installation](#)
- [4 Documents / Resources](#)
- [5 Related Posts](#)

INTERLIGHT LED Lamp User Manual



Manual Downlight

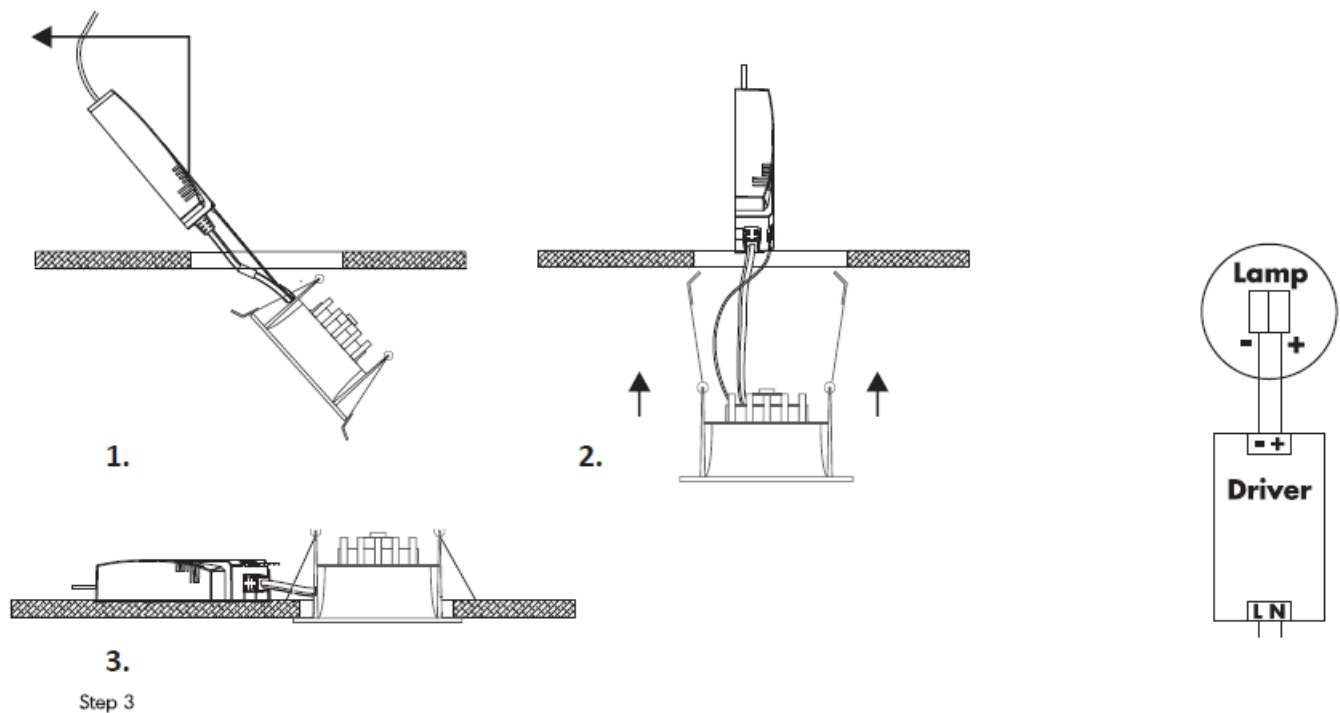


KOOPMANINTERLIGHT.NL

DOWNLIGHTS

Read this manual carefully and keep it for future use.

Installation




- This product is rated at IP44 and is for internal use only.
- This product should only be installed by a licensed electrician.
- Cut off power before installation.
- Ensure the location is suitable and free of any obstructions .
- Cut hole with suitable tools.
- Ensure the circuit is isolated.
- Feed the plug and power supply through the hole and plug into socket.
- Hold back the spring clips and insert the light fixture into the hole.
- Release the clips and center the fixture.
- Energize and test.

CAUTION: The luminaire shall, under no circumstances, be covered with insulating matting.

WARNING: This product should only be installed by a licenced electrician

Documents / Resources

	INTERLIGHT LED Lamp [pdf] User Manual LED Lamp
---	---

Manuals+.