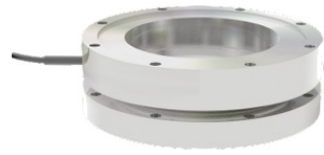


Interface® LWPF1 Press Force Load Washers



Interface LWPF1 Press Force Load Washers Instructions

[Home](#) » [Interface](#) » Interface LWPF1 Press Force Load Washers Instructions 

Contents

- [1 Interface LWPF1 Press Force Load Washers](#)
- [2 Specifications](#)
- [3 Summary](#)
- [4 Materials](#)
- [5 How It Works](#)
- [6 Contact](#)
- [7 FAQ](#)
- [8 Documents / Resources](#)
 - [8.1 References](#)

Interface®

Interface LWPF1 Press Force Load Washers



Specifications

- Product Name: Interface Manufacturing Interface Mini™
- Industry: Manufacturing

- Components: LWPF1 Press Force Load Washers, INF-USB3 Universal Serial Bus Single Channel PC Interface Module
- Usage: Headset manufacturing process for assembly verification

Summary

Customer Challenge

During headset manufacturing, the headsets are assembled in multiple steps. Load cells are needed during the manufacturing process for assembly verification, ensuring all parts of the headset such as cables, microphones, and other components are assembled correctly and securely.

Interface Solution

Interface's LWPF1 Press Force Load Washers can be installed into machines that require \compression or pressing components together during the headset manufacturing process. The LWPF1s will be able to monitor and read the correct amount of force it takes to press components of the headset together. Results were monitored using the INF-USB3 Universal Serial Bus Single Channel PC Interface Module.

Results

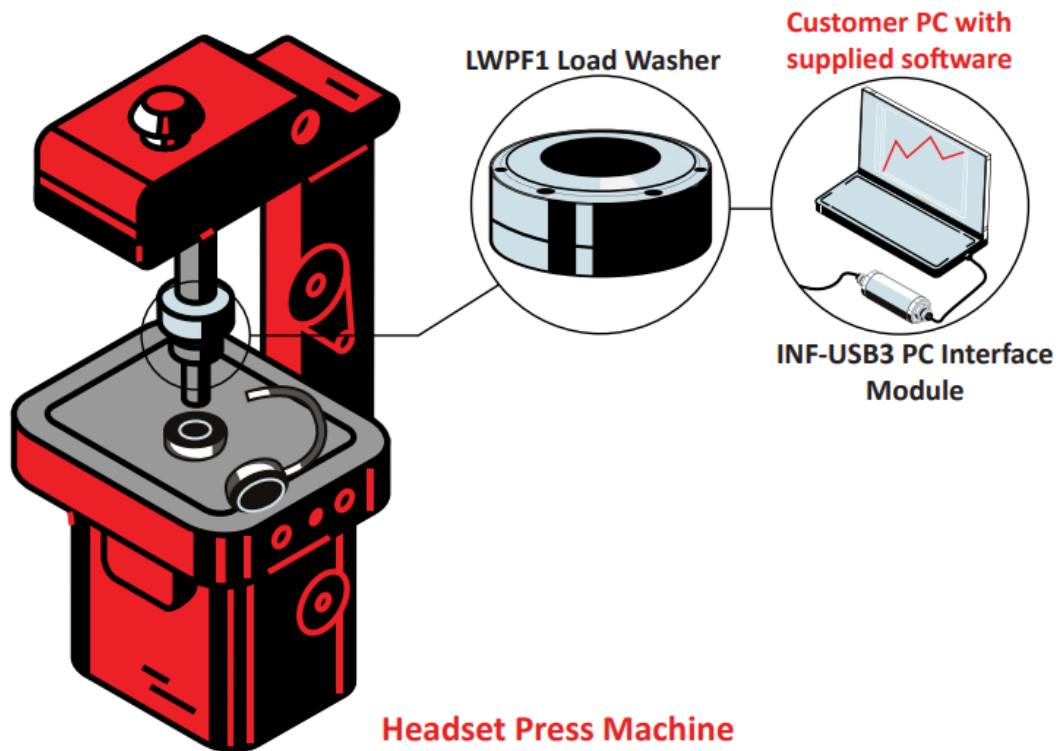
Interface's LWPF Press Force Load Washers successfully measured the forces of different machines during the headset manufacturing process.

Materials

- LWPF1 Press Force Load Washers
- INF-USB3 Universal Serial Bus Single Channel PC Interface Module with supplied software
- Customer press machine
- Customer PC

How It Works

1. Multiple LWPF1 Press Force Load Washers are installed into machines that use compressive forces, such as trademark stamping and headset molds.
2. The force results were monitored when connected to the INFUSB3 Universal Serial Bus Single Channel PC Interface Module.



Contact

- 7418 East Helm Drive, Scottsdale, AZ 85260
- 480.948.5555
- interfaceforce.com

FAQ

- **Q: What is the purpose of LWPF1 Press Force Load Washers in the headset manufacturing process?**
 - A: The LWPF1 Load Washers are used to measure and monitor the forces applied during the assembly of headset components to ensure correct and secure assembly.
- **Q: How are the force results monitored?**
 - A: The force results are monitored by connecting the load washers to the INFUSB3 Universal Serial Bus Single Channel PC Interface Module, which allows for accurate measurement and reading of the forces.
- **Q: Can the LWPF Press Force Load Washers be used in other manufacturing processes?**
 - A: While designed for headset manufacturing, the load washers can be adapted for use in other processes that require monitoring and measurement of compressive forces.

Documents / Resources

	<p>Interface LWPF1 Press Force Load Washers [pdf] Instructions LWPF1 Press Force Load Washers, LWPF1, Press Force Load Washers, Force Load Washers, Load Washers, Washers</p>
--	--

References

- [User Manual](#)

[Manuals+](#), [Privacy Policy](#)

This website is an independent publication and is neither affiliated with nor endorsed by any of the trademark owners. The "Bluetooth®" word mark and logos are registered trademarks owned by Bluetooth SIG, Inc. The "Wi-Fi®" word mark and logos are registered trademarks owned by the Wi-Fi Alliance. Any use of these marks on this website does not imply any affiliation with or endorsement.