



## Interconnective The Partner DEMS Software User Manual

[Home](#) » [Interconnective](#) » Interconnective The Partner DEMS Software User Manual 

# *The Partner*

---

## DEMS

The Partner DEMS Software  
User Manual



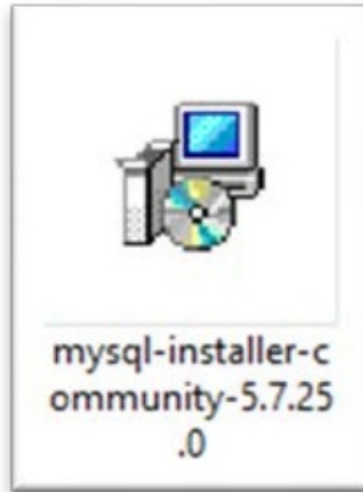
**interconnective**  
SECURITY PRODUCTS

## Contents

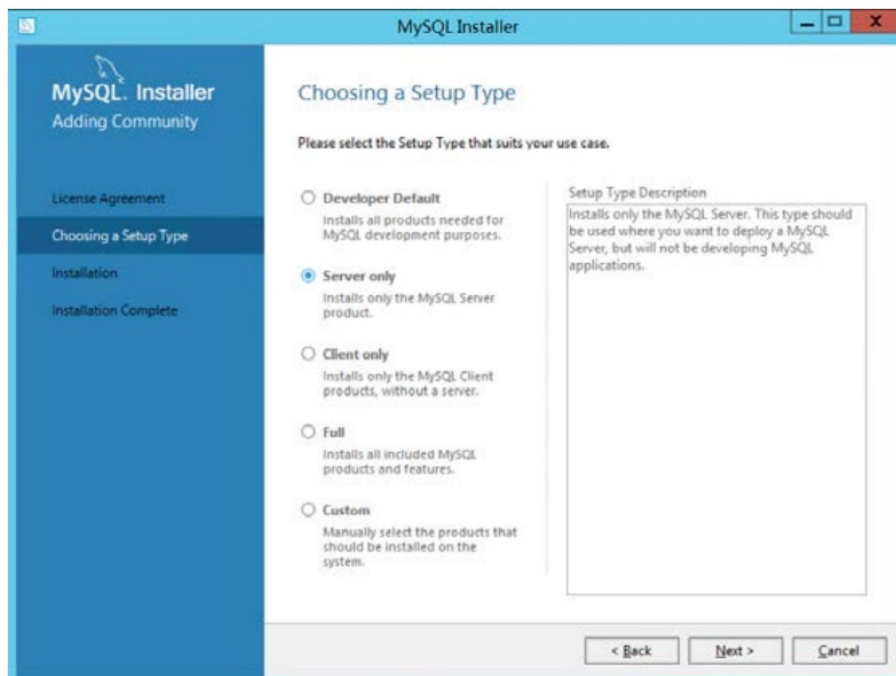
- 1 Installing MySQL Database
- 2 Installing the DEMS Software
- 3 Using the DEMS Software
- 4 Documents / Resources
  - 4.1 References

## Installing MySQL Database

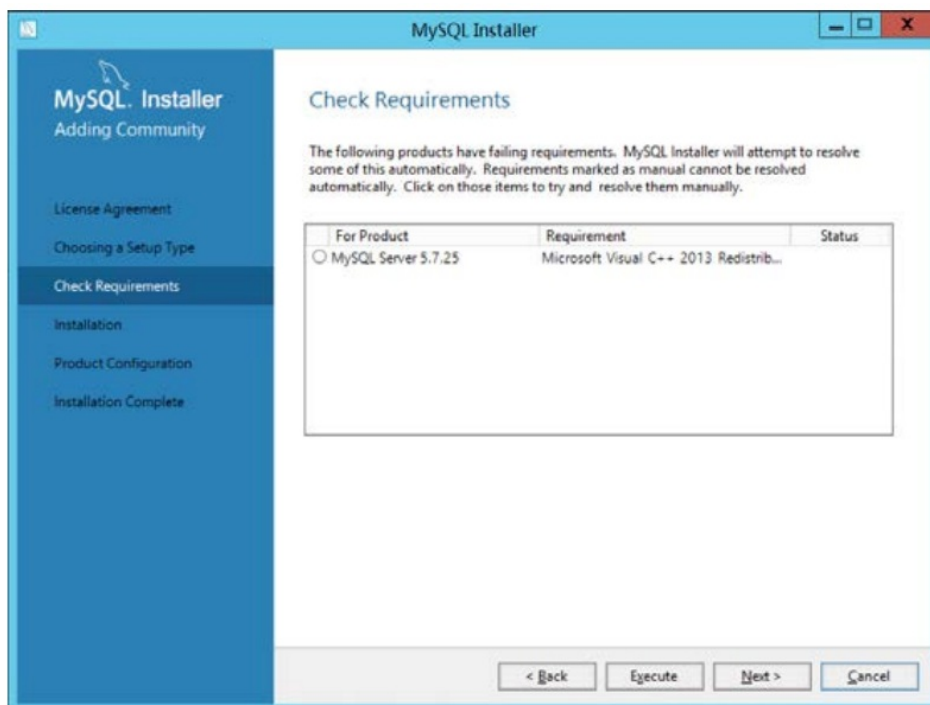
Run the mysql-installer-community-5.7.25.0.msi installer that is contained on your Interconnective software USB.



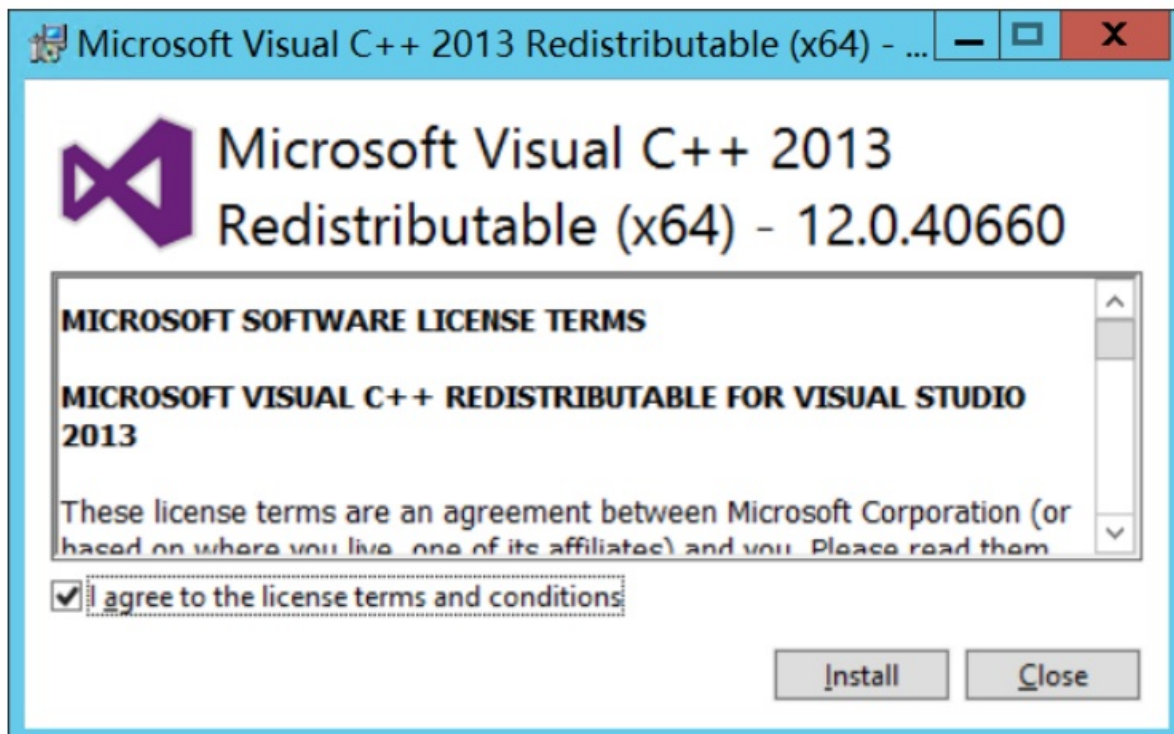
Tick the “I accept the license terms” box and click Next.  
On the Setup Type Screen, choose Server only and click Next.



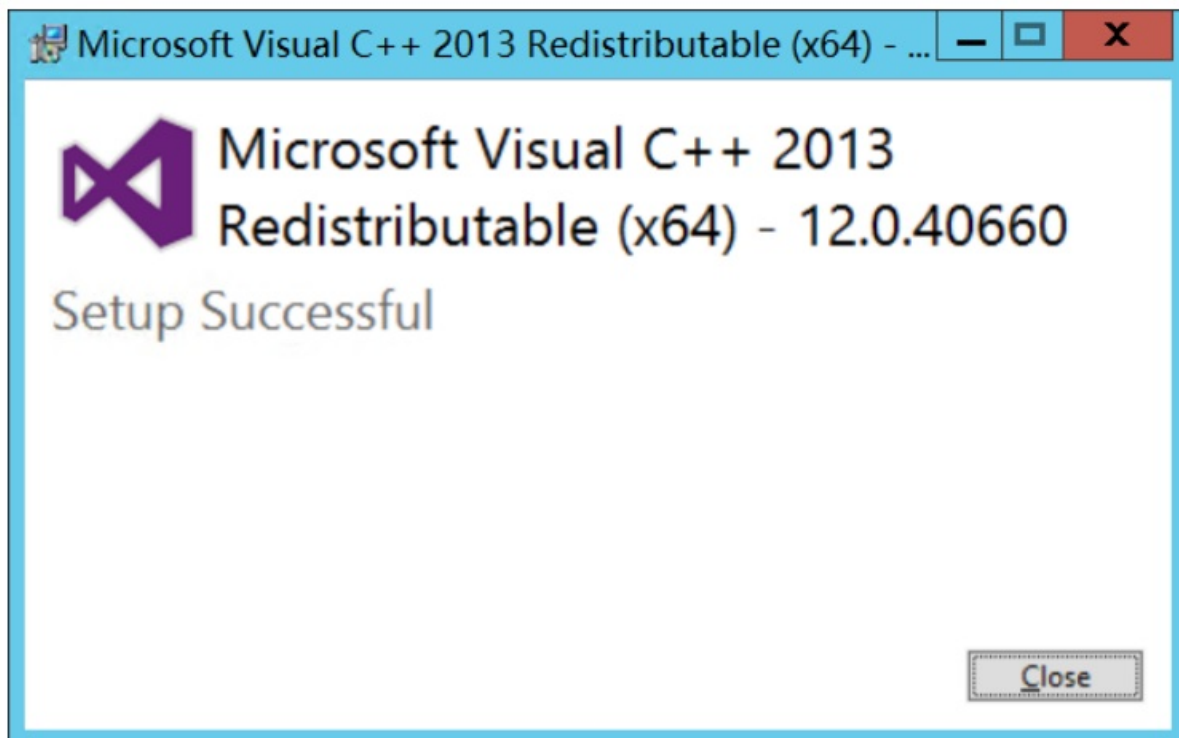
On the Check Requirements Screen, select MySQL Server 5.7.25, click Execute to verify your device against the installation requirements for MySQL.



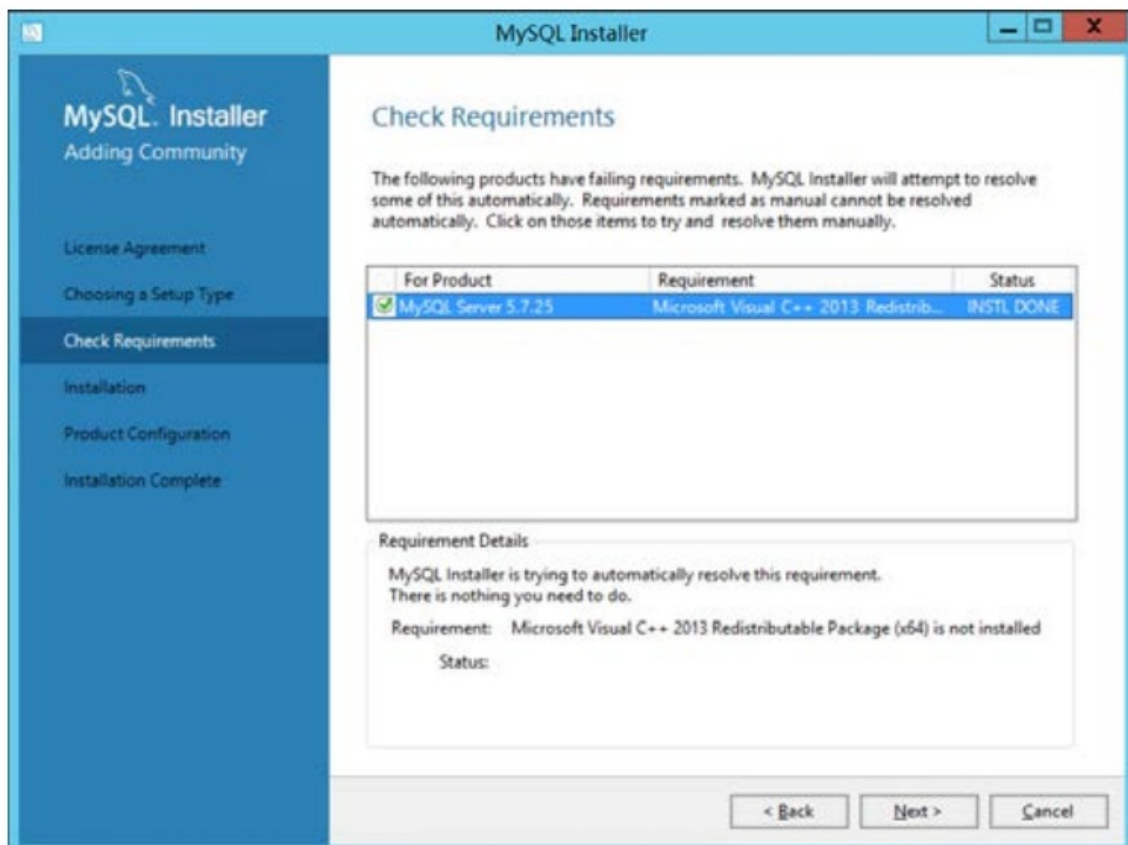
On the next screen for the installation of C++, click Install.



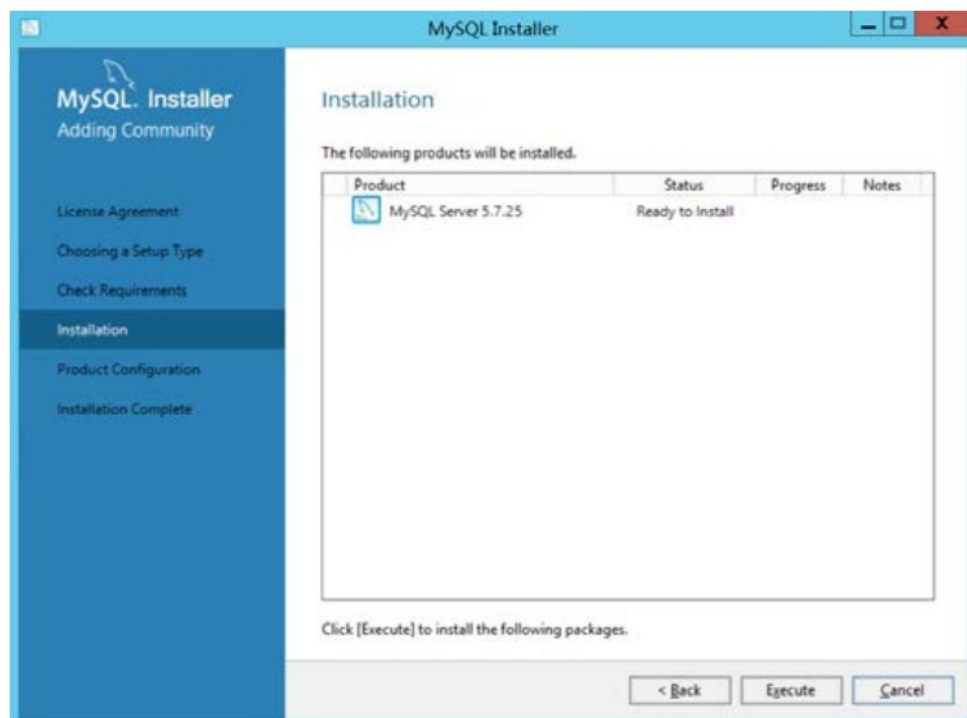
After the installation, click Close on the Setup Successful screen.



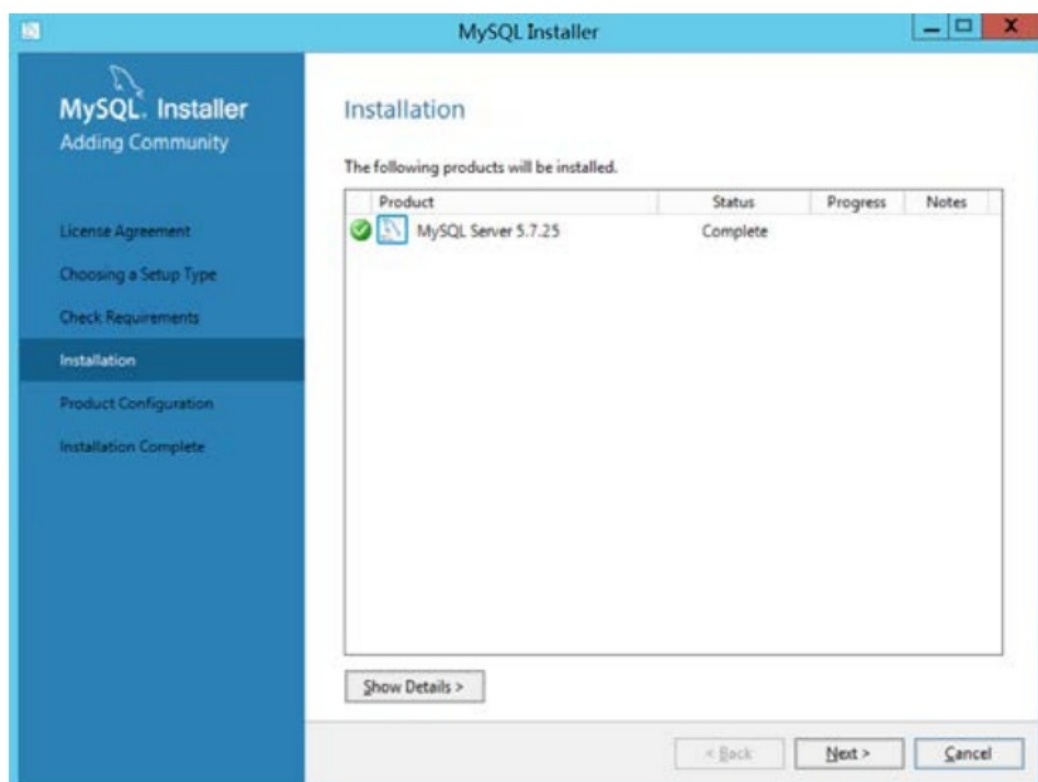
The MySQL Installer should automatically pop-up, click Next.



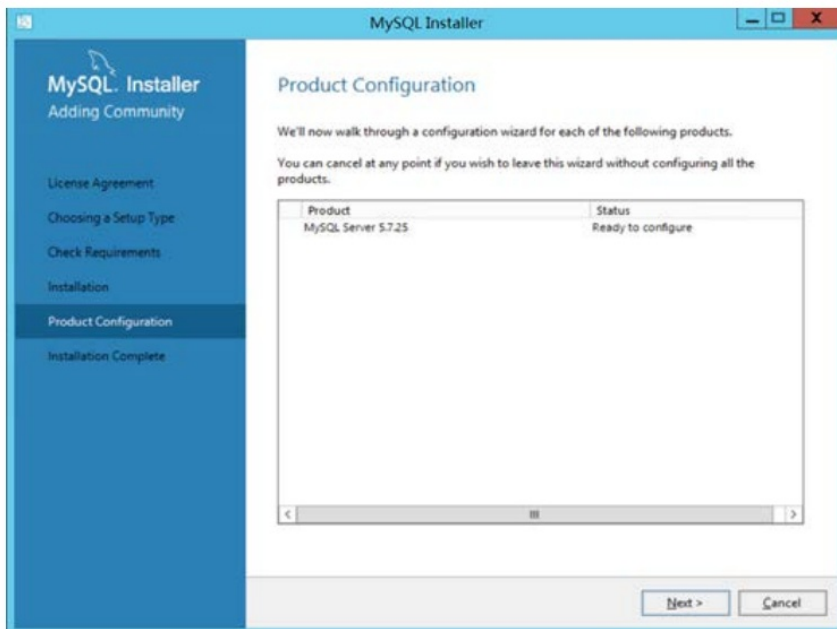
On the next screen, click Execute.



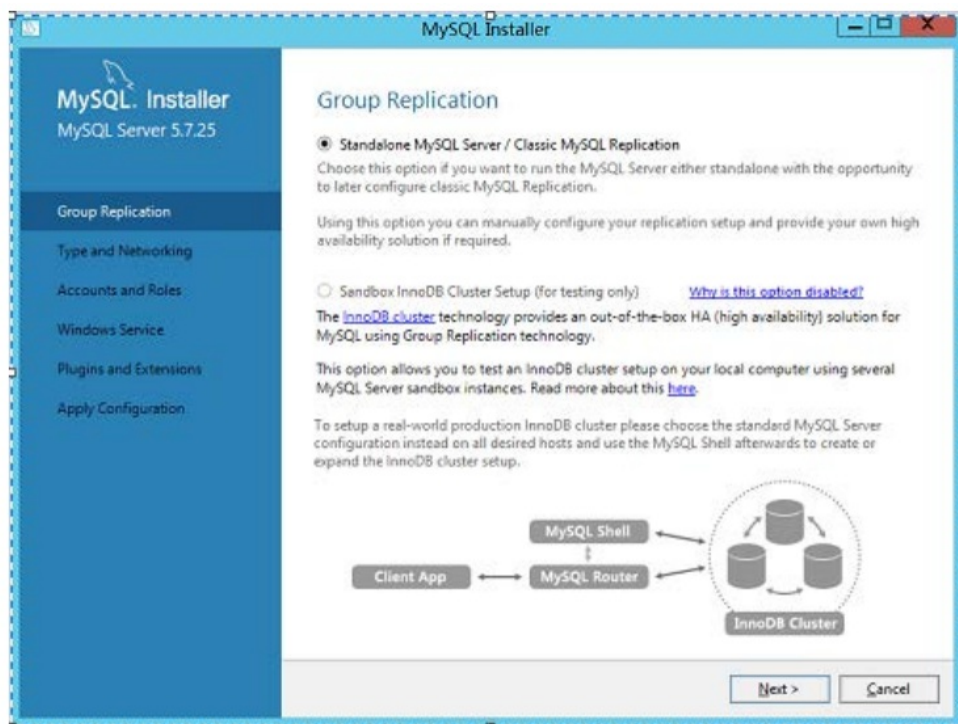
After the database has finished installing, click Next.



On the Product Configuration Screen, Click Next.

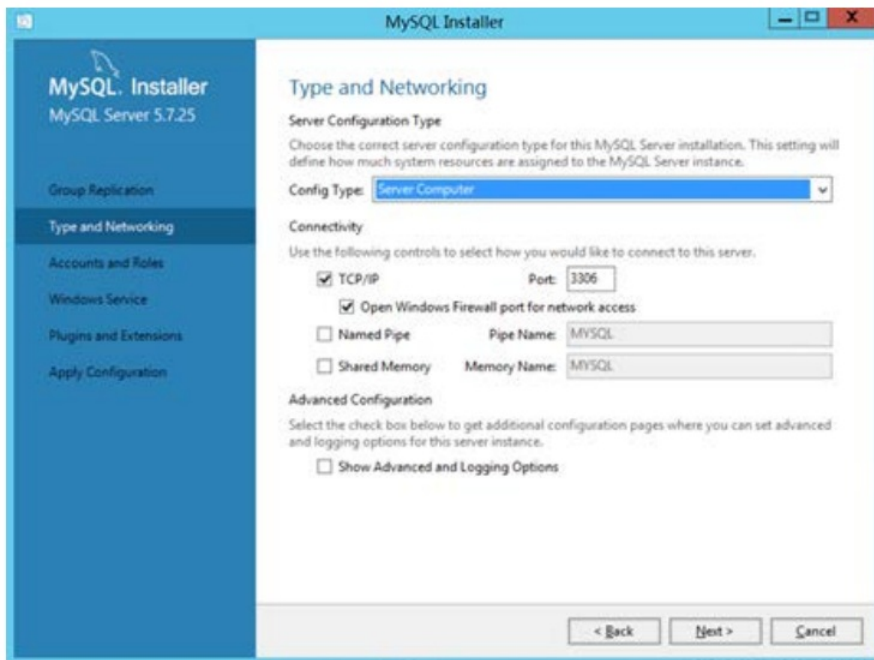


On the Group Replication Screen, select “Standalone MySQL Server/Classic MySQL Replication” and click Next.

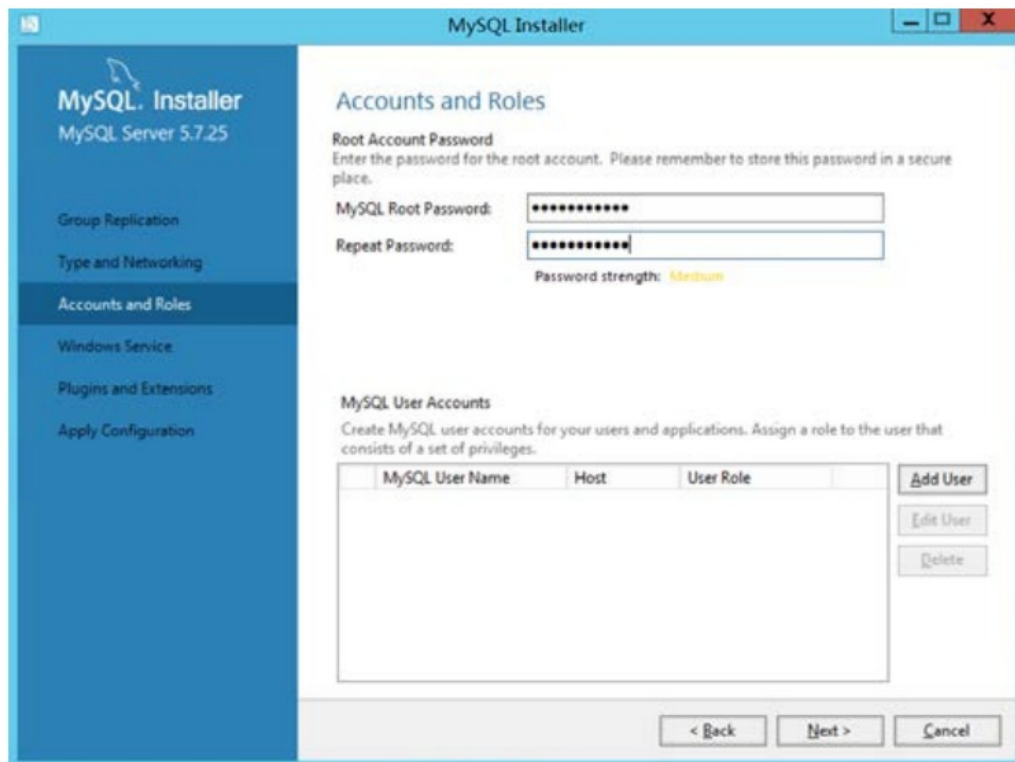


On the Type and Networking Screen, select Config Type “Server Computer”. For TCP/IP use the default port, 3306.

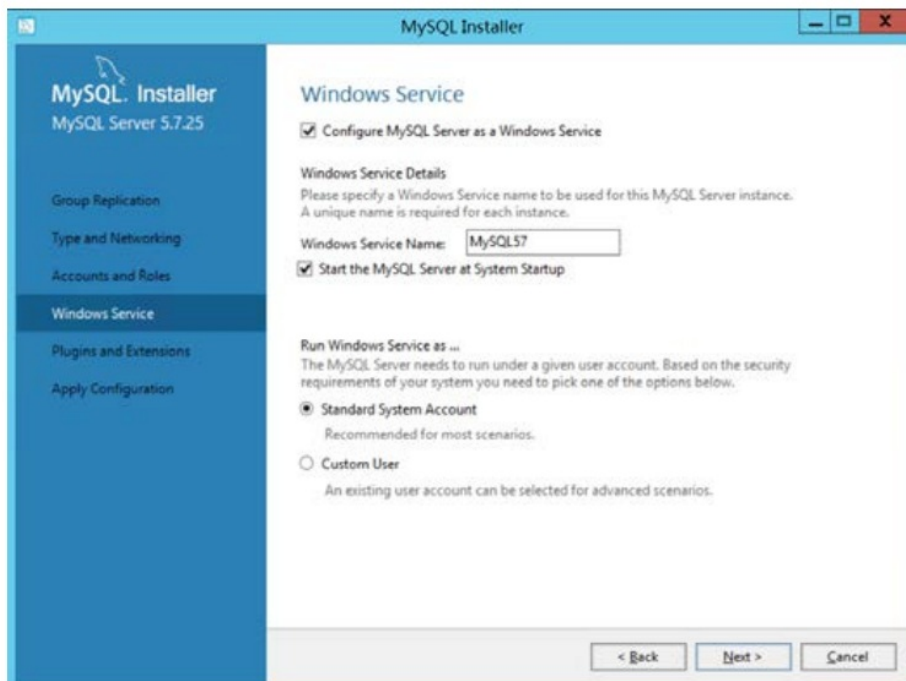




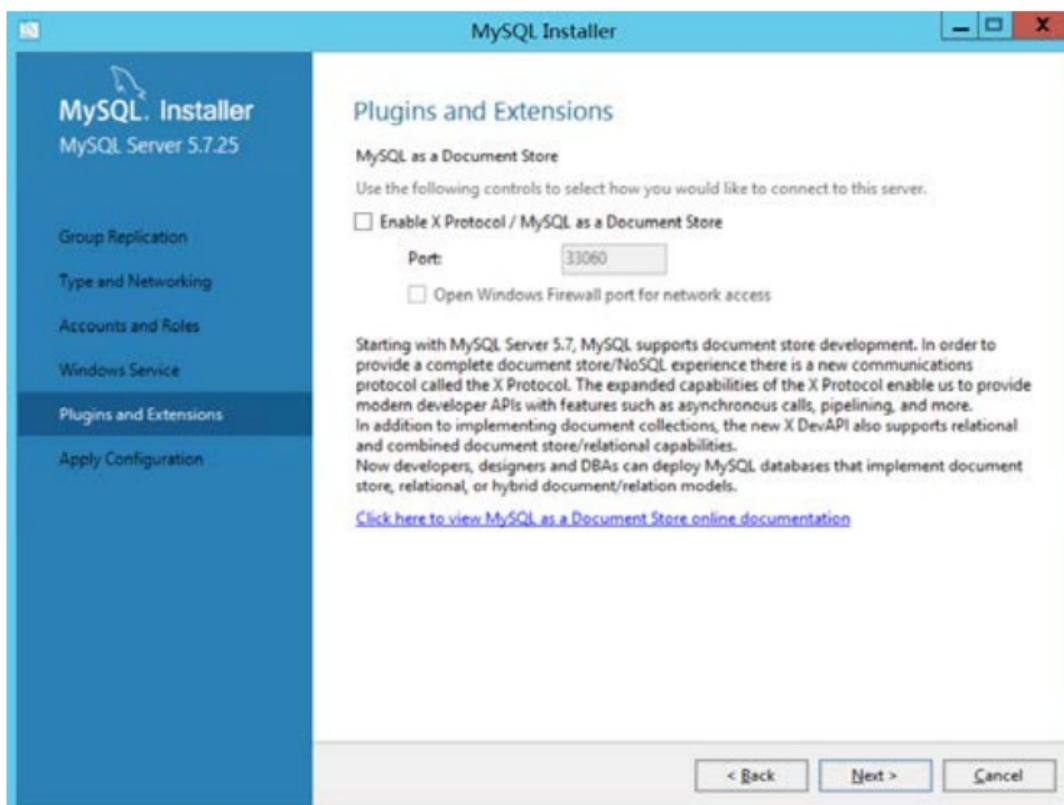
For your default password, please consult your Interconnective issued version of this manual. If it is inputted incorrectly, the DEMS installer will fail. After you have done so, click Next.



On the Windows Service screen, select Standard System Account and click Next.

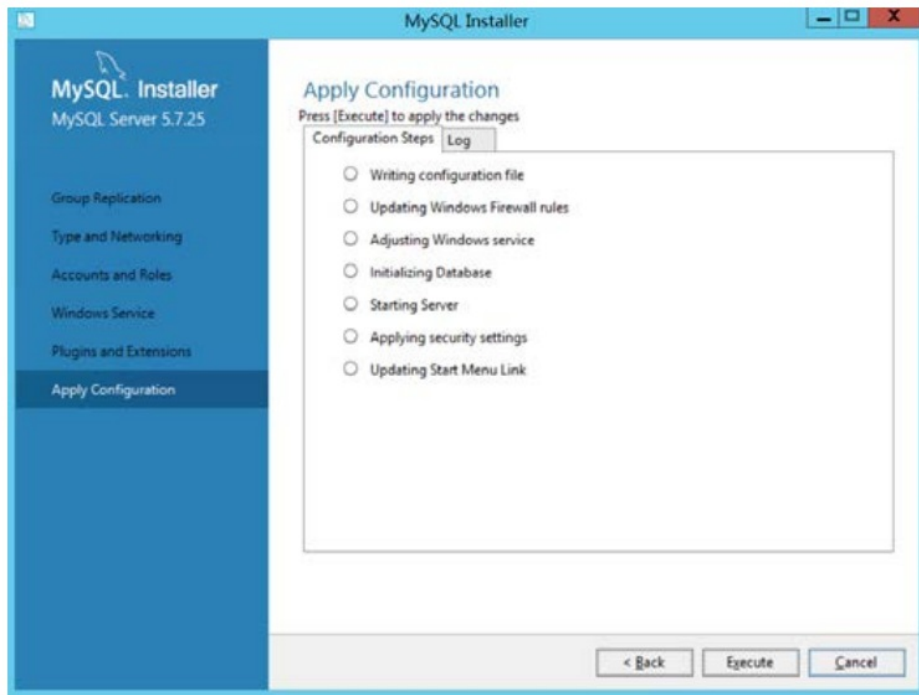


On the Plugins and Extensions Screen, you will be using the default setting so click Next.

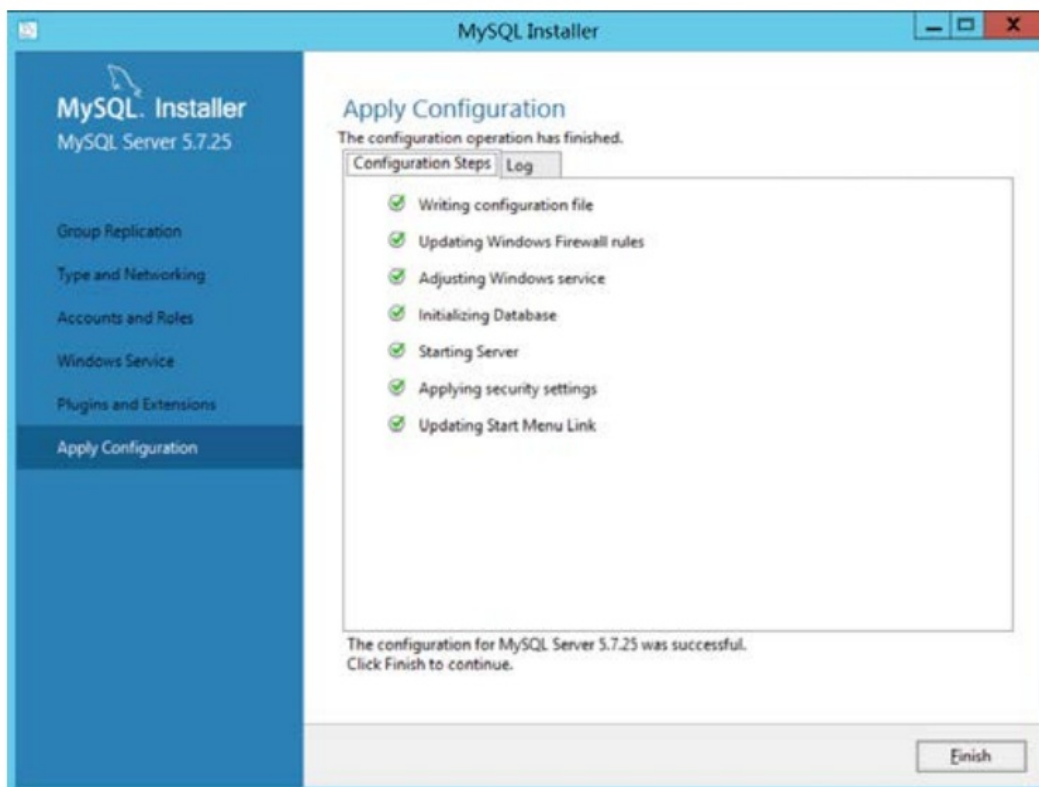


On the Apply Configuration Screen, just click Execute as you have already set your required settings.

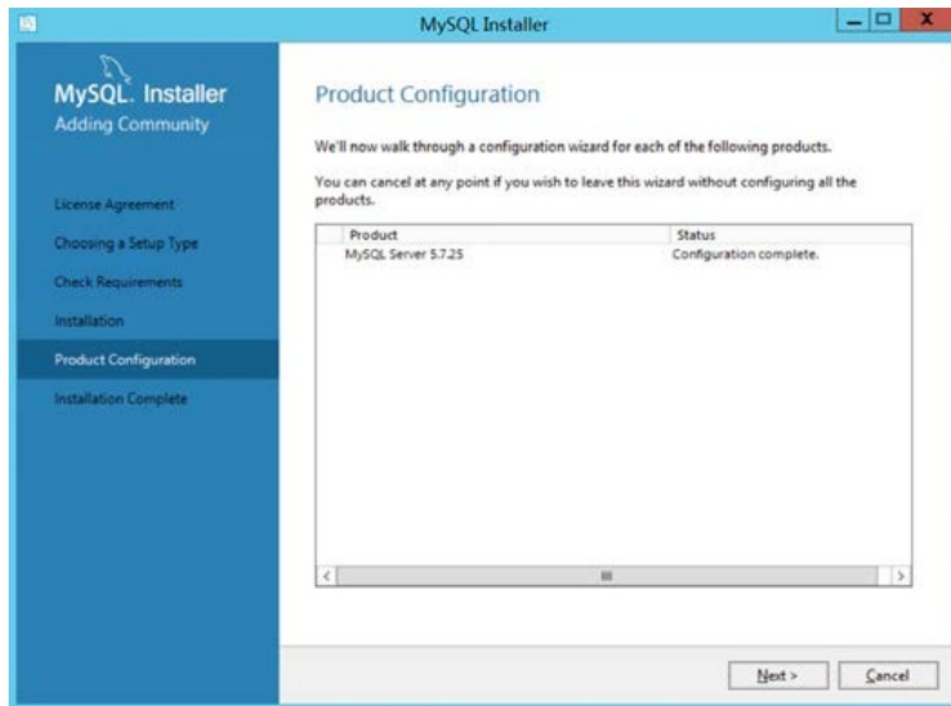




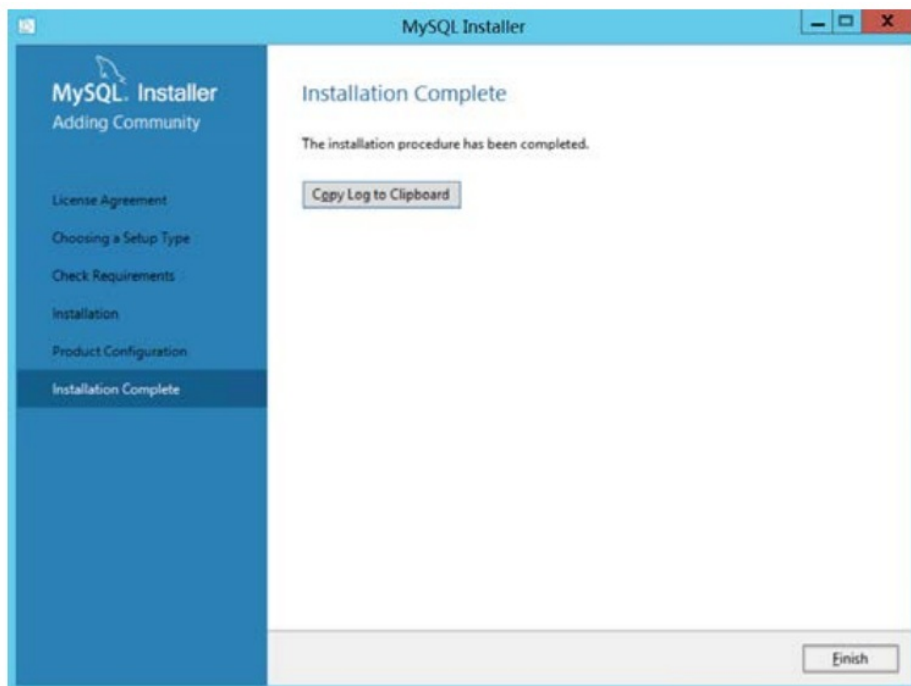
Click Finish once the configuration has completed.



Click Next on the Product Configuration Screen



Finally, click Finish to complete your MySQL Database installation.

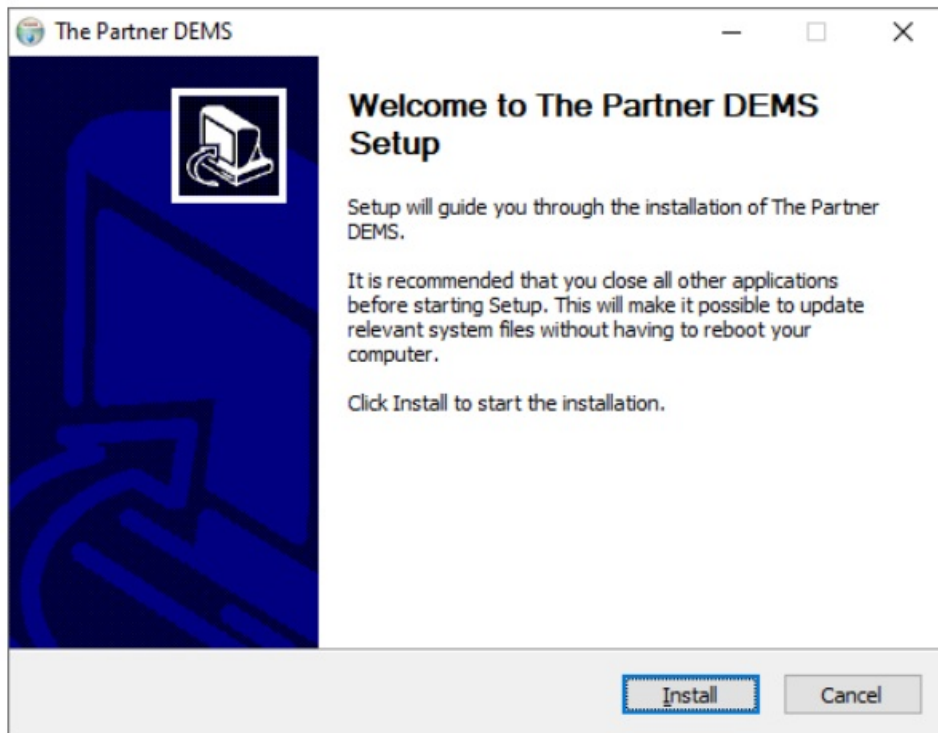


## Installing the DEMS Software

### 1. Installing your Partner MK4 DEMS Software

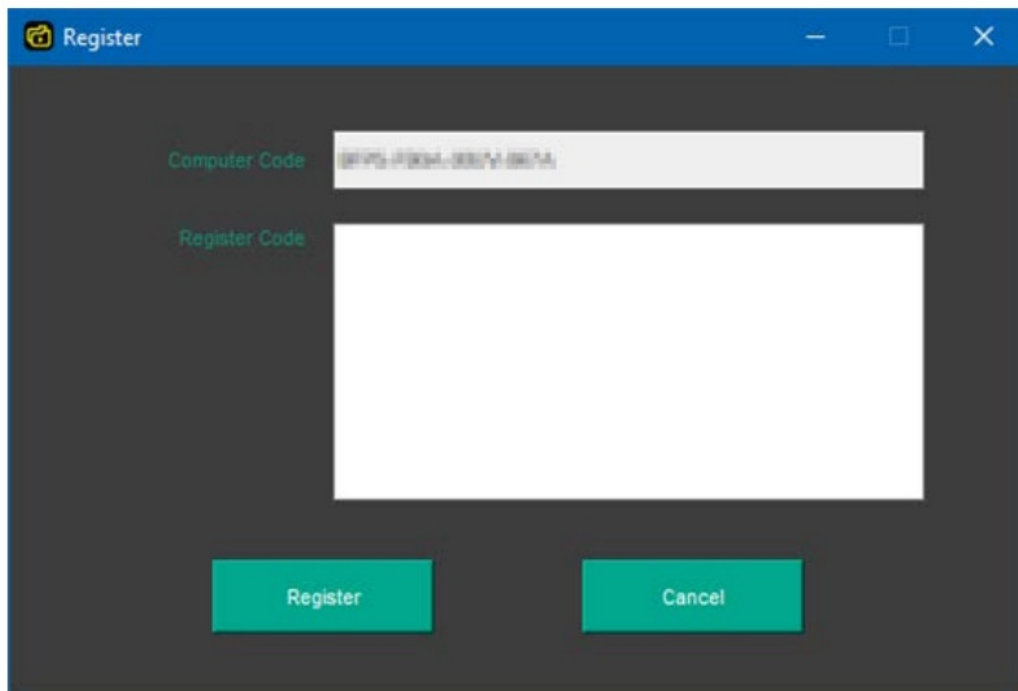
Run the DEMS Installer from your Interconnective USB or locally saved file.

On the Welcome to The Partner DEMS Setup Screen, click Install.



## 2. Registering your Partner MK4 DEMS Software

Once the DEMS software has been installed, you will need to register it. Run the DEMS.exe and you will be greeted by the Register Screen.



Copy the Computer Code and send it to your Interconnective Security Products contact who will then complete the application for a Register Code.

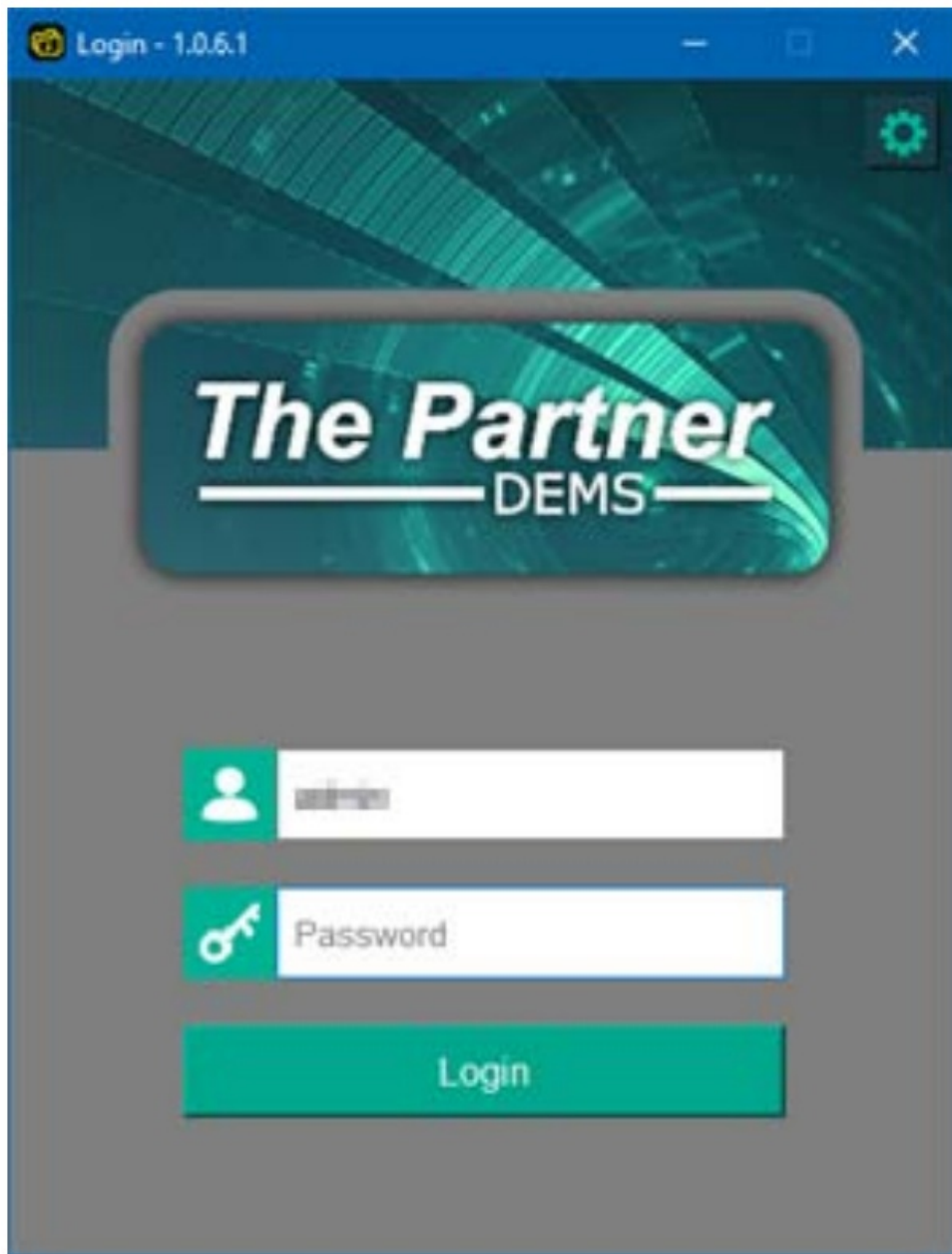
This process can take up to 24 hours.

Once you have your Register Code, input it into the Register Code box and click Register and your Partner MK4 DEMS will now be operational.

## Using the DEMS Software

When you run your new DEMS software, you will be using the default Username and Password.

**For the default password, please consult your Interconnective issued version of this manual.**



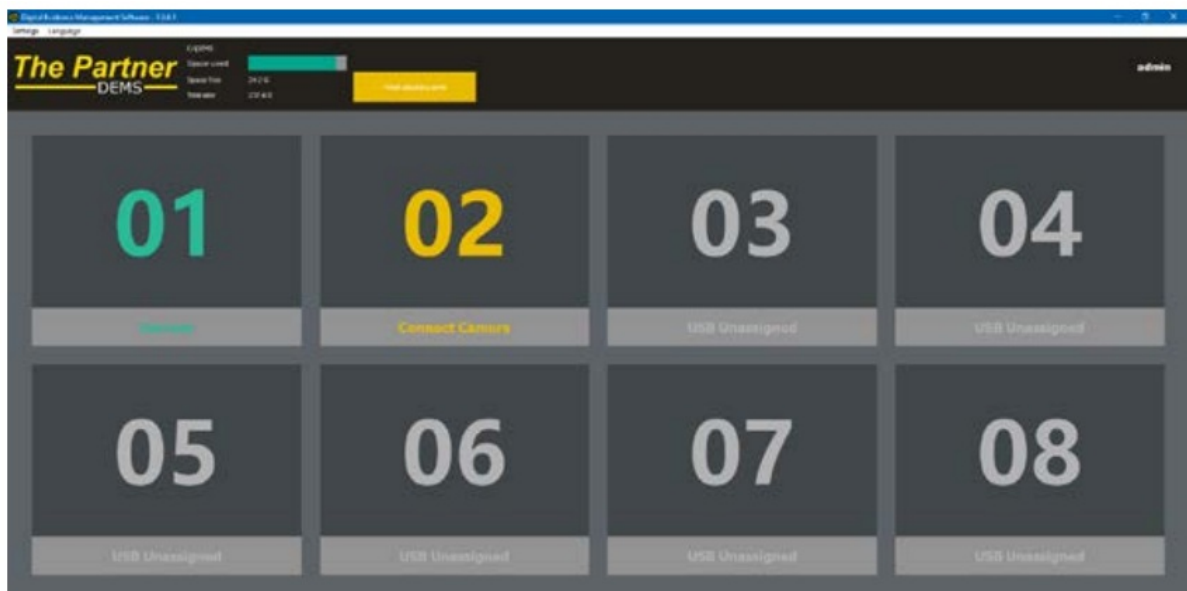
Once you have logged in, you will be greeted with the Partner MK4 DEMS Dashboard. From here, you can assign USB ports, access your files, manage users, view your audit log or access the settings menu.



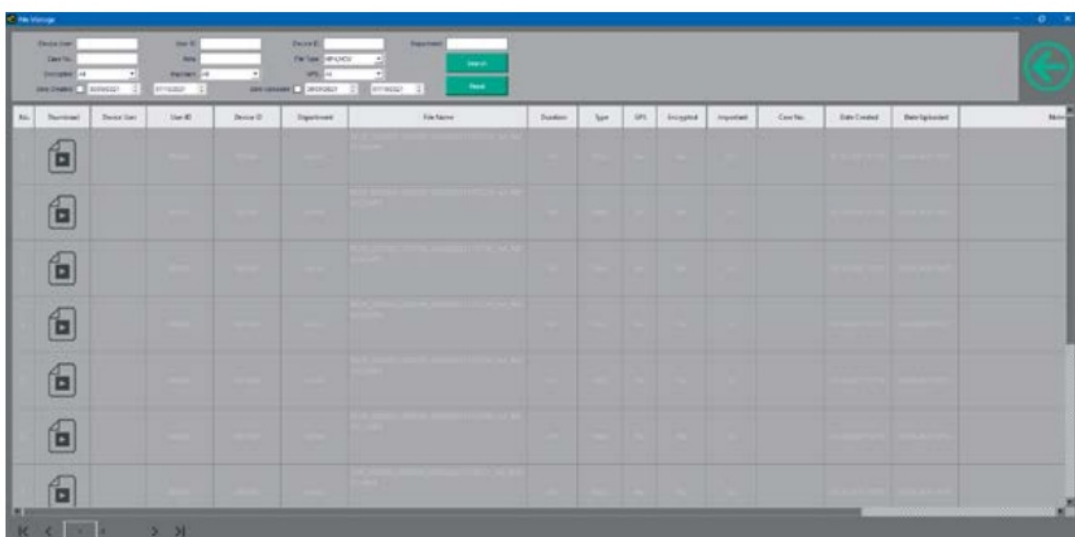
To assign the USB to a camera or dock, click on "Settings" in the top left of the Dashboard, and then click "Adjust Port"



Connect the cameras to the PC one at a time to assign them to your USB ports



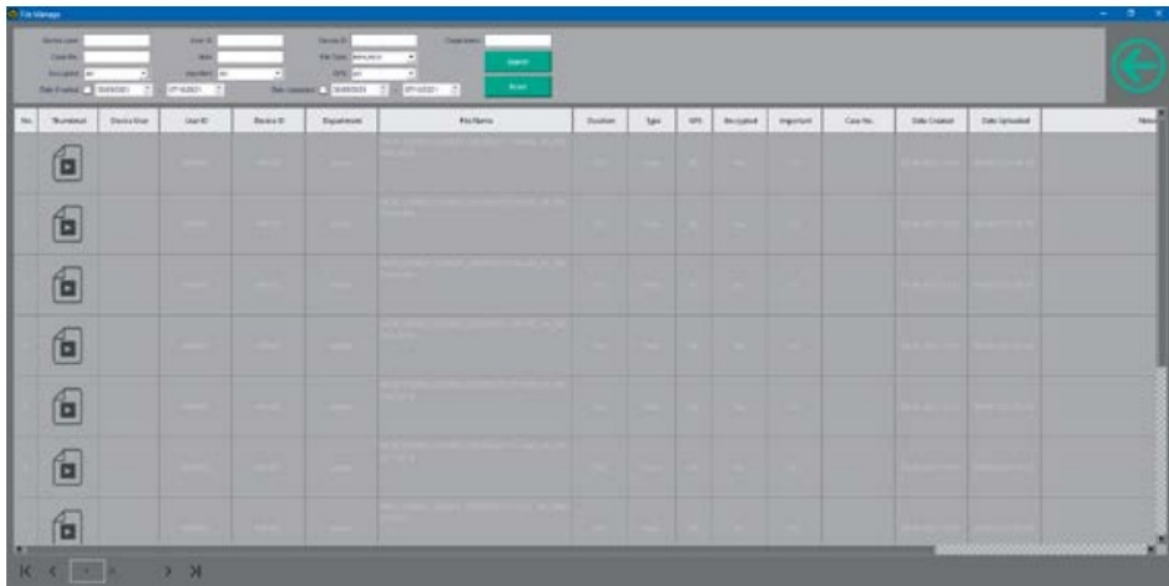
When all of the ports have been assigned, click on the yellow button “Finish adjusting ports”.  
 Now, when you connect a camera, the DEMS software will automatically download and clear any footage stored on the camera.  
 To view this footage, click on File Manager on the top right of the Dashboard.





From the File Manager you can double click to play a video.

To export footage, right click on the file you would like to export, enter a name and reason for export and click export. When you click export, you can choose where to save the file.



When you double click on a video file it will open up a new window and start playing automatically. There are play/pause, stop and volume controls with a seek bar. On the right hand side there are options to add a case number and some notes to the video. The Save button will save any changes you make to the notes or the case number. There are also options to export, mark as important or delete the footage. At the bottom of the screen you can select the start and finish times for the clip to export a section of the footage.



Press the Back button in the top right and it will take you back to the Dashboard. From here, click on Audit Log to open the Audit Log screen. The audit log shows a full list of actions that were performed on the software, including logins, file viewing, any deletions and the exporting of videos.





**Add User**

Username

Password

Re-enter password

Department

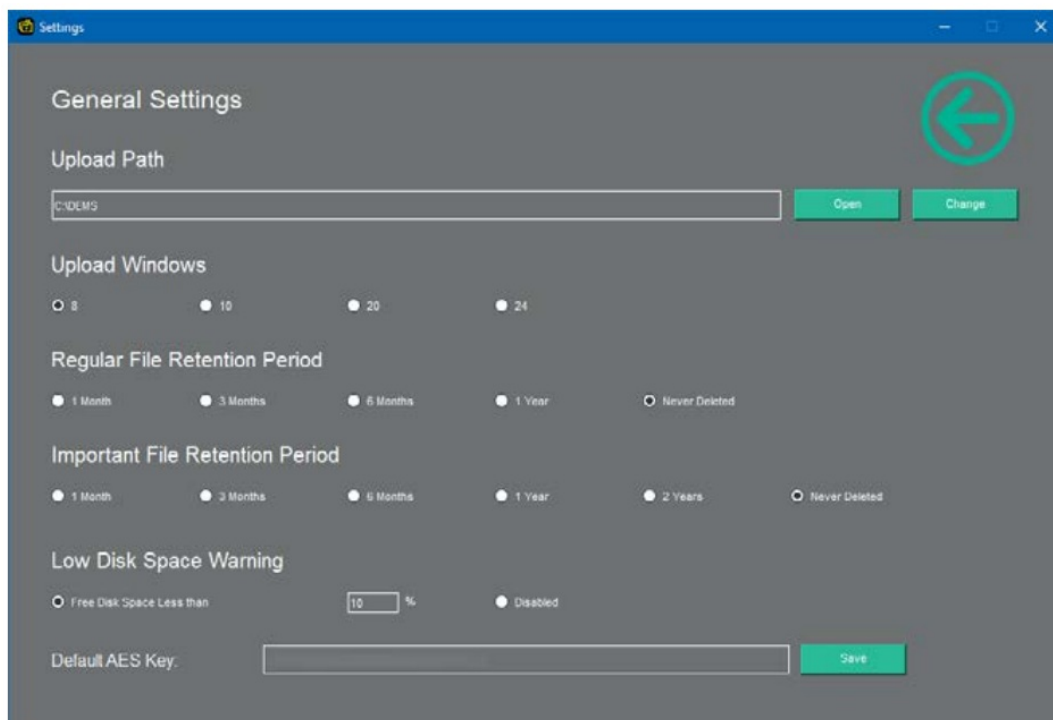
**Permissions:**

- View Uploaded Files ☐
- Edit File Info ☐
- Case No. & Notes ☐
- Mark/Unmark Important ☐
- Export File(s) ☐
- Delete File(s) ☐
- Add User ☐
- Audit Log ☐
- Settings ☐

**Save** **Cancel**

The final screen that you need to familiarise yourself with is the General Settings screen. Return to the Dashboard and click Settings.

The Settings screen lets you set where the footage is saved when it is downloaded from the cameras, how many cameras are displayed in the main screen, file retention periods and the low disk space warnings for the software. The Default AES Key is used to decrypt the footage from the cameras and should match the AES key that has been set for the cameras in Cam Manager.




That covers everything you need to know about The Partner MK4 DEMS Software. If you have any issues or questions, please do not hesitate to get in contact on 01494 446965 or at [support@interconnective.co.uk](mailto:support@interconnective.co.uk)



For technical support, please call 01494 446 965  
Or email [support@interconnective.co.uk](mailto:support@interconnective.co.uk)

---

## Documents / Resources

	<a href="#">Interconnective The Partner DEMS Software</a> [pdf] User Manual The Partner DEMS Software, Partner DEMS Software, DEMS Software, Software
---	--

## References

- [User Manual](#)

[Manuals+](#), [Privacy Policy](#)

This website is an independent publication and is neither affiliated with nor endorsed by any of the trademark owners. The "Bluetooth®" word mark and logos are registered trademarks owned by Bluetooth SIG, Inc. The "Wi-Fi®" word mark and logos are registered trademarks owned by the Wi-Fi Alliance. Any use of these marks on this website does not imply any affiliation with or endorsement.