



InTemp CX5000 Onset Data Logger Internet Gateway User Guide

[Home](#) » [InTemp](#) » InTemp CX5000 Onset Data Logger Internet Gateway User Guide 

Contents

- [1 InTemp CX5000 Onset Data Logger Internet Gateway](#)
- [2 Product Information](#)
- [3 Product Usage Instructions](#)
- [4 Documents / Resources](#)
 - [4.1 References](#)
- [5 Related Posts](#)

InTemp

InTemp CX5000 Onset Data Logger Internet Gateway



Product Information

The CX5000 Gateway is a device that allows users to connect InTemp loggers to the cloud via a Wi-Fi or Ethernet connection. It has an AC adapter for power and can be configured using the InTempConnect app or website. The device can be used for monitoring temperature and humidity in various settings.

Product Usage Instructions

1. Go to www.intempconnect.com to set up an account or log into your existing account.

A screenshot of the InTempConnect website's login page. The header features the 'InTempConnect' logo with a cloud icon. Below the header, there are two input fields: 'Username:' and 'Password:'. To the right of each field is a small icon of a person. Below the password field, there is a blue button labeled 'Log in'. To the left of the 'Log in' button is a yellow circle with a white letter 'A' inside. Below the 'Log in' button, there is a link that says 'Forgot Password?'. To the left of the 'Log in' button, there is a link that says 'Create User/Account'.

2. In InTempConnect, click Settings and then Roles. Click Add Role to create a role for the person who will be setting up the gateway or click an existing role to edit it.

InTempConnect® Data Loggers Gateways Settings

Settings > Roles

Add Role

Administrator

Description: Administrator

3. If you need to add a user, click the Users tab and then Add User, fill in the fields, and assign the user a role with gateway privileges.

Type the name of the role (A) for the Description.

Select “Login to InTempConnect” plus the gatewayrelated privileges (Manage Gateways, Manage Logger/Gateway Profiles, Create Shipments, Edit/Delete Shipments, and Gateway Administrator) from the Available Privileges list on the left and click the right arrow button (B) to move them to the Assigned Privileges list on the right. Select a user from the Available Users list on the left and click the right arrow button (C) to move the user to the Assigned Users list on the right. Click Save (D).

Description: Gateway User

Available Privileges

- Connect to Loggers in Account
- Delete Reports
- Download and Continue
- Download and Restart
- Download and Stop
- Preview and Share Reports
- Reset Logger Passkey
- Update Logger Firmware

Assigned Privileges

- Login to InTempConnect
- Manage Gateways
- Manage Logger/Gateway Profiles
- Create Shipments
- Edit/Delete Shipments
- Gateway Administrator

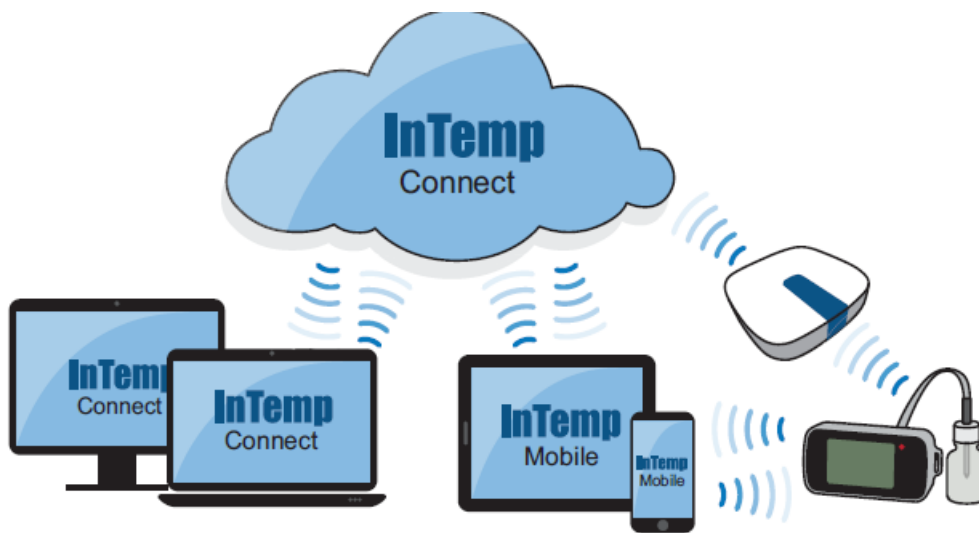
Available Users

Assigned Users

jsmith@onsetcomp.com

Save

Tip: If you need to add a user, click the Users tab and then Add User, fill in the fields, and assign the user a role with gateway privileges.



4. Insert the appropriate plug for your region into the AC adapter. Connect the AC adapter to the gateway and plug it in. Wait a couple of minutes for the gateway to completely power up. The LED on the gateway will be yellow-green while it powers up and then change to deep green once it is ready to set up. Click Gateways and then Gateway Profiles. Click Add Gateway Profile and type a name (A) for the profile. Select the CX logger type. If the gateway will be used in a storage application (i.e. a clinic or office), enter these settings (B):

- Select Download and Restart for when to connect.
- Select “Immediately connect to a logger with a new sensor alarm.”
- DO NOT select “Immediately connect to a logger not seen by this gateway.”
- Choose to immediately connect to a logger with a low battery alarm (CX400 and CX450 loggers only).
- Choose to connect to loggers every week.

Click Save (C).

Tip: Refer to the full product manual for details on other configuration settings. Go to www.onsetcomp.com/intemp/resources/cx5000-manual.

5. Set up Wi-Fi network settings. Make sure the device with the InTemp app can connect to the Wi-Fi network. Open the app and log in as InTempConnect user. The gateway will appear in the list under Devices. Tap the gateway in the list to connect to it.

Insert the appropriate plug for your region into the AC adapter. Connect the AC adapter to the gateway and plug it in. Wait a couple of minutes for the gateway to completely power up. The LED on the gateway will be

yellow-green while it powers up and then change to deep green once it is ready to set up.



6. Select the gateway profile you created in InTempconnect in step 4. Type a name for the gateway and tap Start. Set up Wi-Fi network settings. Make sure the device with the InTemp app can connect to the Wi-Fi network. Open the app and log in as an InTempConnect user (A).

InTemp

Welcome to InTemp
If you have an account, login here

jsmith@onsetcomp.com

☒ I am an InTempConnect user

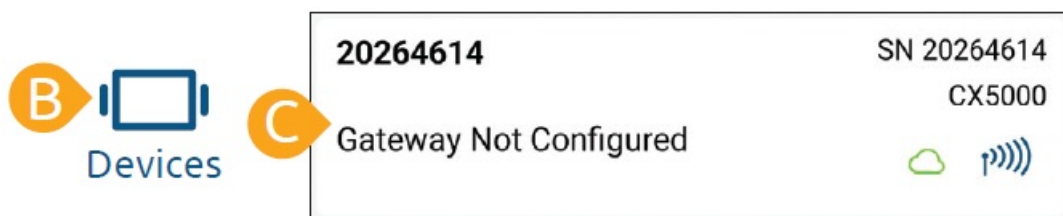
Login

Tip: If the gateway will be using Ethernet with DHCP, plug in the Ethernet cable. Network settings will be configured automatically.

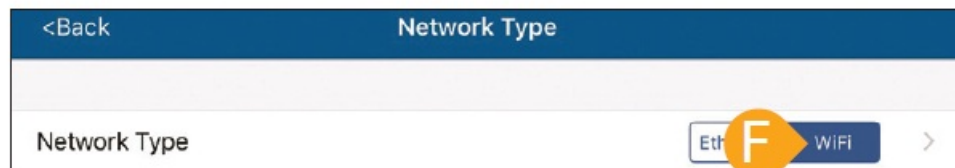
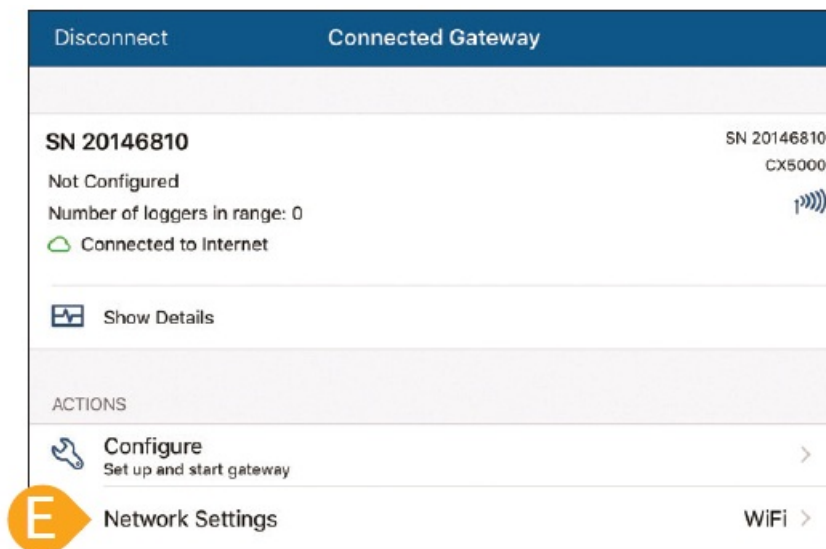
To configure network settings for Ethernet with static IP addresses or to set up a gateway for use at another site, refer to the product manual at www.onsetcomp.com/intemp/resources/cx5000-manual.

Tap Devices (B). The gateway appears in the list.

Tap the gateway in the list (C) to connect to it.



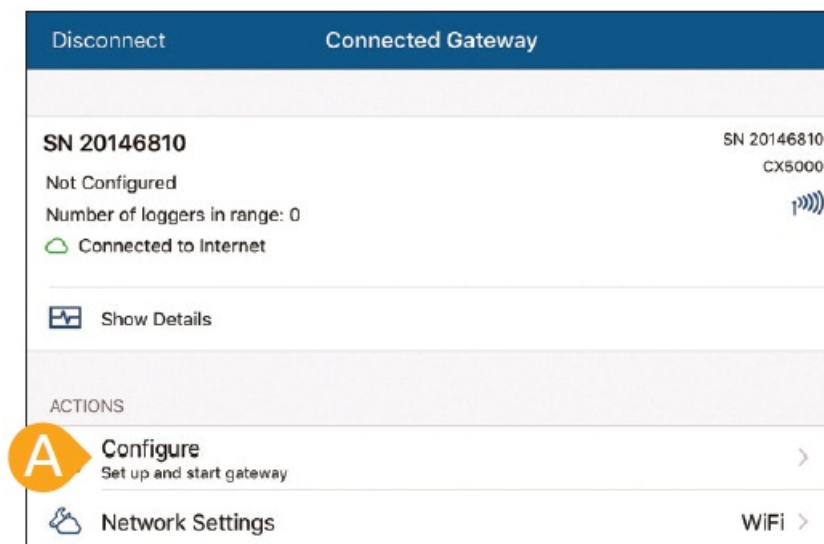
Tap Network Settings (E) and then tap WiFi (F).



Tap Use Current WiFi Network (G) and tap Save (H).



7. Connect to the gateway and tap Configure.



Select the gateway profile (B) you created in InTempconnect in step 4 (swipe left and right if there are multiple profiles). Type a name for the gateway (C) and tap Start (D).

Once a gateway has contacted InTempConnect for the first time, a user is created for the gateway in your account. Click Settings and then the Users tab to see the gateway user name, which is listed as CX5000- <gateway serial number>.

8. Deploy the gateway in a location suitable for monitoring temperature and humidity.

Deploy the gateway. Some guidelines when selecting a location for the gateway:

- The gateway can support up to 50 loggers within transmission range, which optimally is 30.5 m (100 ft) will full line-of-sight.
- Test the range by positioning your mobile device where you want to deploy the gateway. If the mobile device can connect to the logger with the InTemp app from that location, then the gateway should be able to connect to the logger as well.
- If you plan to use the gateway for loggers in different rooms, be sure to test the connection first.

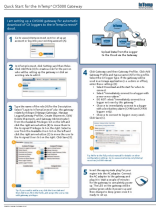
The gateway is ready for use with loggers. See www.intempconnect.com/help for details on configuring and downloading loggers with the gateway, setting up shipments, and more.

Refer to the CX5000 Gateway manual for full product details, including specifications and mounting instructions. Scan the code or go to www.onsetcomp.com/intemp/resources/cx5000-manual.







Note: For additional information on configuring loggers, setting up shipments, and more, please refer to the CX5000 Gateway manual available at www.onsetcomp.com/intemp/resources/cx5000-manual.

© 2017–2021 Onset Computer Corporation. All rights reserved. Onset, InTemp, and InTempConnect are registered trademarks of Onset Computer Corporation. Bluetooth is a registered trademark of Bluetooth SIG, Inc. All other trademarks are the property of their respective companies.



[InTemp CX5000 Onset Data Logger Internet Gateway](#) [pdf] User Guide
CX5000, CX5000 Onset Data Logger Internet Gateway, Onset Data Logger Internet Gateway,
Data Logger Internet Gateway, Internet Gateway, Gateway

References

-  [InTempConnect](#)
-  intempconnect.com/help
-  [Real-time Cold Chain and Vaccine Monitoring Solutions | Onset's HOBO and InTemp Data Loggers](#)
-  [CX5000 Gateway Manual | Onset's HOBO and InTemp Data Loggers](#)

Manuals+