




INTELLINET 519526 Cat6 Patch Panel Instructions

[Home](#) » [INTELLINET](#) » INTELLINET 519526 Cat6 Patch Panel Instructions 

INTELLINET 519526 Cat6 Patch Panel Instructions

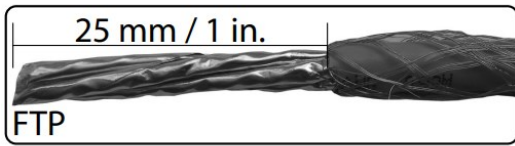
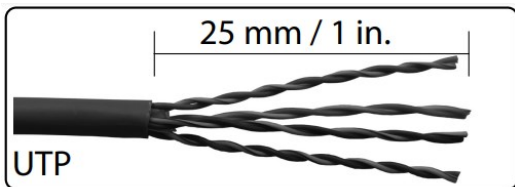


Contents

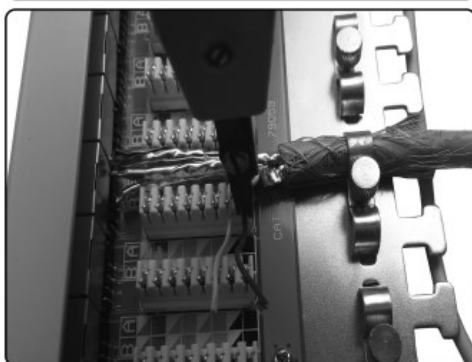
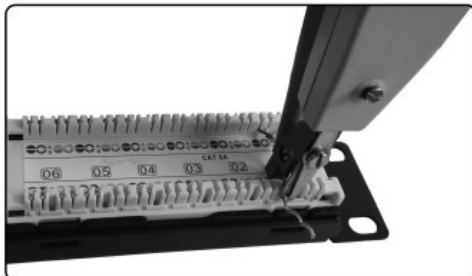
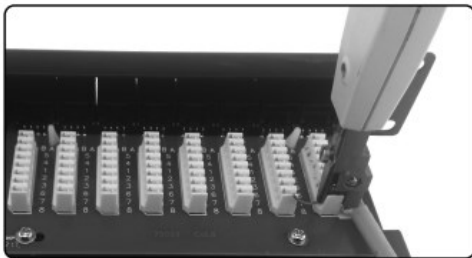
- [1 Instructions](#)
- [2 REGISTRATION](#)
- [3 WARRANTY](#)
- [4 support](#)
- [5 Documents / Resources](#)
 - [5.1 References](#)
- [6 Related Posts](#)

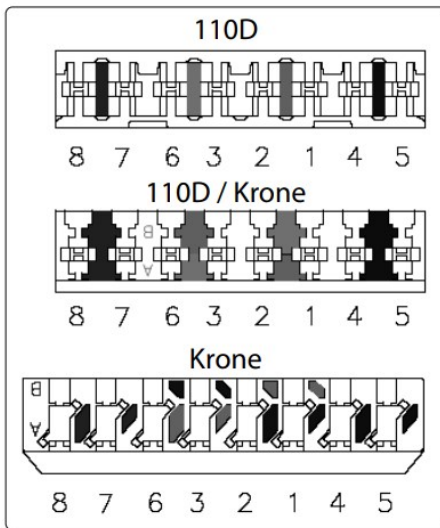
Instructions

Note: These instructions can be used for any Patch Panel in the Intellinet line. Your model may differ from the one shown.

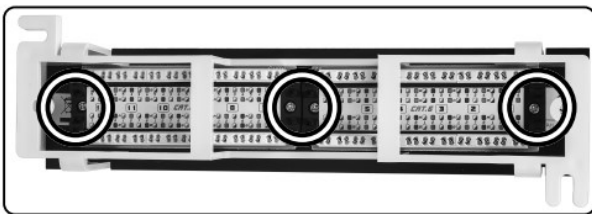
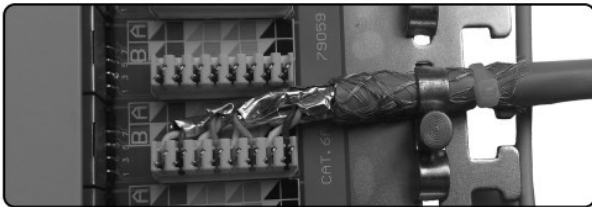


Strip away 25-30 mm of the cable jacket and separate the wires into 4 pairs. Cut the wire holder flush with the cable jacket.





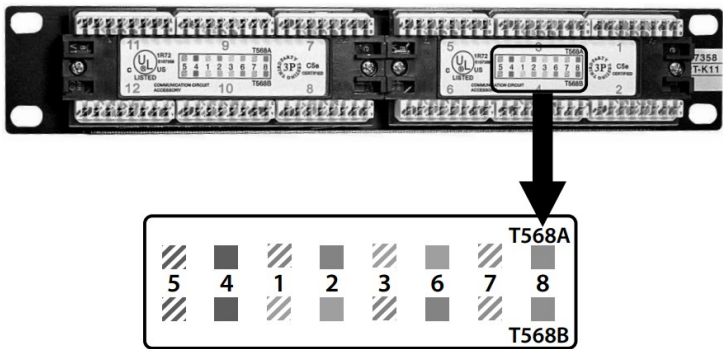
Refer to the IDC color codes on the back page to position each wire, and connect it to the patch panel using a Krone or 110D punch-down tool.



Attach the cables to a cable manager using cable ties, then position the patch panel as desired.

IDC COLOR CODES

T568A	
Pin 5	White/Blue
Pin 4	Blue
Pin 1	White/Green
Pin 2	Green
Pin 3	White/Orange
Pin 6	Orange
Pin 7	White/Brown
Pin 8	Brown
T568B	
Pin 5	White/Blue
Pin 4	Blue
Pin 1	White/Green
Pin 2	Green
Pin 3	White/Orange
Pin 6	Orange
Pin 7	White/Brown
Pin 8	Brown



REGISTRATION

Scan the QR code on the other side or visit:





■ This symbol on the product or its packaging means that this product must not be treated as unsorted household waste. In accordance with EU Directive 2012/19/EU on Waste Electrical and Electronic Equipment (WEEE), this electrical product must be disposed of in accordance with the user's local regulations for electrical or electronic waste. Please dispose of this product by returning it to your local point of sale or recycling pickup point in your municipality.

WARRANTY

REGULATORY STATEMENTS

The Declaration of Conformity for is available at:

support

[.intellinet-network.com/barcode/519526](https://intellinet-network.com/barcode/519526)

North & South America

IC Intracom Americas
550 Commerce Blvd.
Oldsmar, FL 34677, USA


Asia & Africa

IC Intracom Asia 4-F, No. 77, Sec. 1, Xintai 5th Rd.
Xizhi Dist., New Taipei City 221, Taiwan

Europe

IC Intracom Europe
Löhbacher Str. 7
D-58553 Halver, Germany

Documents / Resources

	<p>INTELLINET 519526 Cat6 Patch Panel [pdf] Instructions 519526 Cat6 Patch Panel, Cat6 Patch Panel, 519526 Patch Panel, Patch Panel, Panel, 519526</p>
	<p>INTELLINET 519526 Cat6 Patch Panel [pdf] Instructions 519526, Cat6 Patch Panel, 519526 Cat6 Patch Panel, Patch Panel, Panel</p>
	<p>INTELLINET 519526 Cat6 Patch Panel [pdf] Instructions 519526 Cat6 Patch Panel, 519526, Cat6 Patch Panel, Cat6 Panel, Patch Panel, Panel, Cat6</p>

References

- [DropCatch.com](#)
- [Intellinet Network Solutions Account and Product Registration](#)