




INTELLINET 513548 Cat5e Patch Panel Instructions

[Home](#) » [INTELLINET](#) » INTELLINET 513548 Cat5e Patch Panel Instructions 

Contents

- [1 INTELLINET 513548 Cat5e Patch Panel](#)
- [2 Installation](#)
- [3 IDC COLOR CODES](#)
 - [3.1 T568A](#)
 - [3.2 T568B](#)
- [4 WASTE ELECTRICAL & ELECTRONIC EQUIPMENT](#)
- [5 WARRANTY](#)
- [6 REGULATORY STATEMENTS CE](#)
- [7 Documents / Resources](#)
 - [7.1 References](#)
- [8 Related Posts](#)



INTELLINET 513548 Cat5e Patch Panel

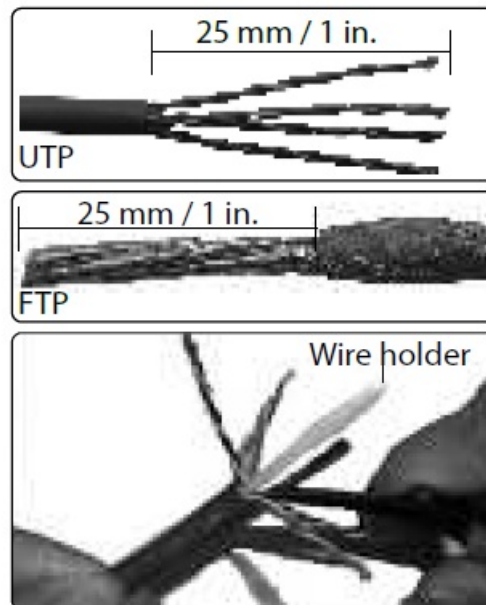


NOTE : These instructions can be used for any Patch Panel in the Intellinet line. Your model may differ from the one shown.

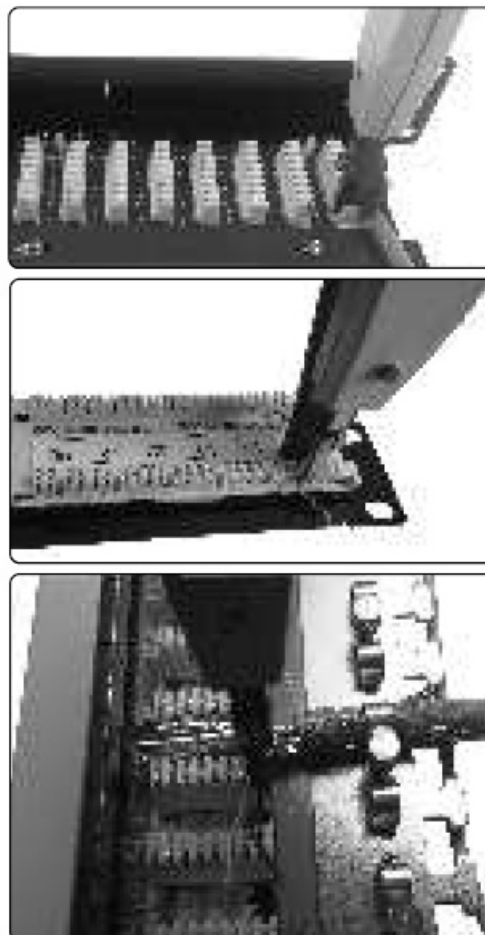
Installation

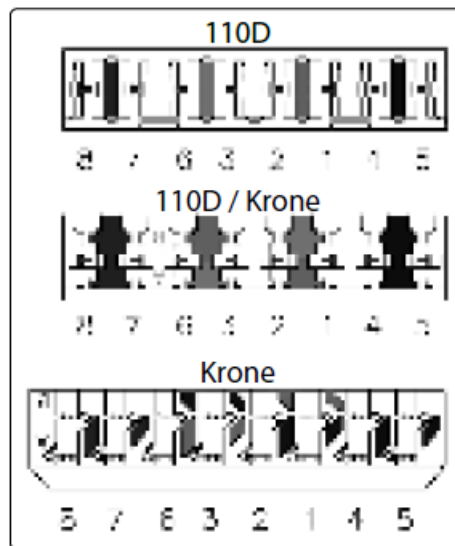
1. Strip away 25-30 mm of the cable jacket and separate the wires into 4 pairs. Cut the wire holder flush with the

cable jacket.

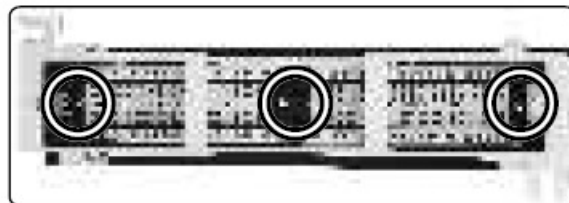


2. Refer to the IDC color codes on the back page to position each wire, and connect it to the patch panel using a Krone or 110D punch-down tool.

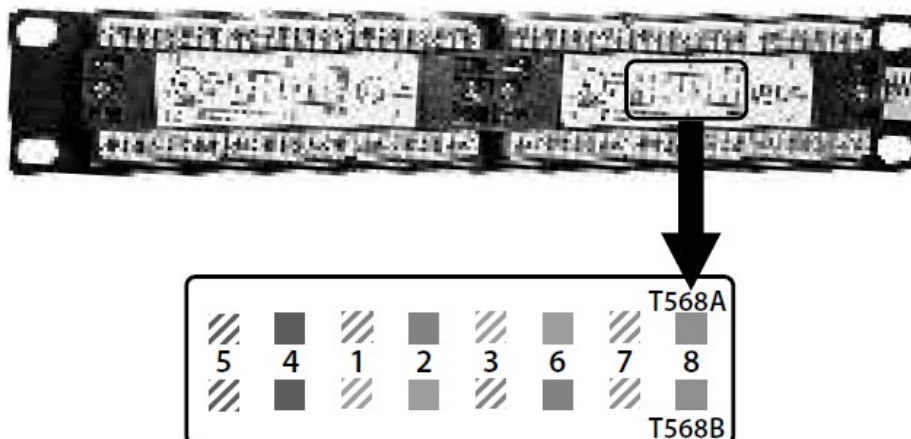




3. Attach the cables to a cable manager using cable ties, then position the patch panel as desired.



IDC COLOR CODES



T568A

- Pin 5 White/Blue
- Pin 4 Blue

- Pin 1 White/Blue
- Pin 2 Green
- Pin 3 White/Orange
- Pin 6 Orange
- Pin 7 White/Brown
- Pin 8 Brown

T568B

- Pin 5 White/Blue
- Pin 4 Blue
- Pin 1 White/Orange
- Pin 2 Orange
- Pin 3 White/Green
- Pin 6 Green
- Pin 7 White/Brown
- Pin 8 Brown

WASTE ELECTRICAL & ELECTRONIC EQUIPMENT

Disposal of Electric and Electronic Equipment (applicable in the E.U. and other countries with separate collection systems)

This symbol on the product or its packaging means that this product must not be treated as unsorted household waste. In accordance with EU Directive 2012/19/EU on Waste Electrical and Electronic Equipment (WEEE), this electrical product must be disposed of in accordance with the user's local regulations for electrical or electronic waste. Please dispose of this product by returning it to your local point of sale or recycling pickup point in your municipality.

WARRANTY

intellinetnetwork.com

REGULATORY STATEMENTS CE

The Declaration of Conformity for is available at: support. intellinet-network.com/barcode/513548

All trademarks and trade names are the property of their respective owners. © IC Intracom. All rights reserved. Intellinet Network Solutions is a trademark of IC Intracom, registered in the U.S. and other countries.

Documents / Resources

	<p>INTELLINET 513548 Cat5e Patch Panel [pdf] Instructions 513548 Cat5e Patch Panel, 513548, Cat5e Patch Panel, Patch Panel, Panel</p>
---	---

References

-  DropCatch.com
-  [Intellinet Network Solutions Account and Product Registration](#)

Manuals+.