



integratech HWDP IP66 IK08 High Output Instruction Manual

[Home](#) » [integratech](#) » integratech HWDP IP66 IK08 High Output Instruction Manual 

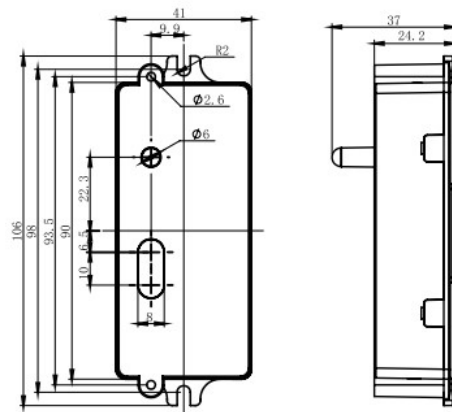




BRI810-B-D



RC-100
(OPTIONAL)



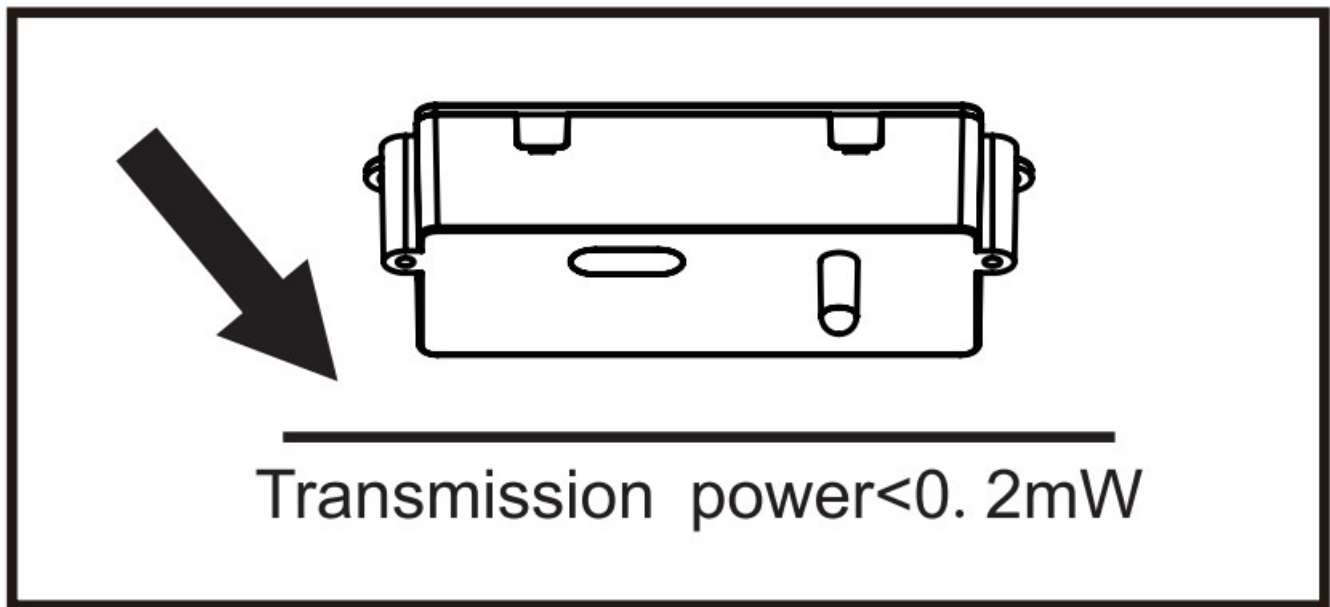
Contents

- 1 SPECIFICATIONS
- 2 SENSOR COVERAGE
- 3 UTILIZING FIELD AND INTRODUCTION
- 4 FUNCTION AND OPTIONS
- 5 WIRING DIAGRAMS
- 6 INSTALLATION
- 7 Dimensions
- 8 SENSOR COVERAGE
- 9 Documents / Resources

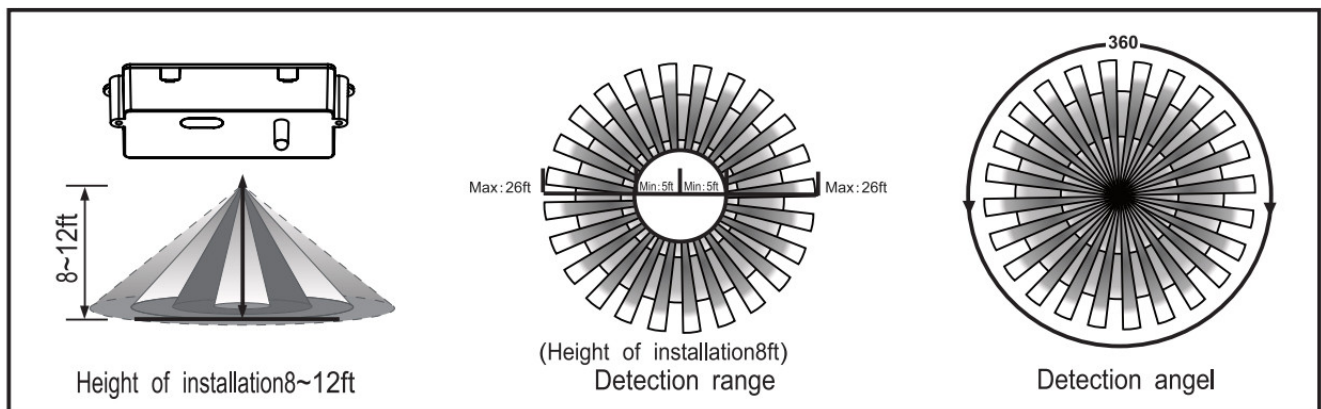
SPECIFICATIONS

Power supply	120/277VAC 50/60Hz
Maximum load © -40°F – +158°F F (-40°C – +70°C)	Resistive/Tungsten – 600Wat120V Electronic Ballast (LED) – 800VA©120V/1200VA©277V
HF System	5.8GHz CW
Dim control cut out	0-10y. max. 25mA ;Mina current
Detection radius/angle	Max 266.(8m) /360°
Mounting height	Max 12ft
Humidity	Max. 95% RH
Temperature	-40°F – +158°F (-40°C – +70°C)

NOTE: The hilil-freclueny output of this sensor is <0. 2mW-that is just one 5000'of the transmission power of a mobile phone or the output of a microwave



SENSOR COVERAGE



Once powering the device up, the BRI81-B-D will use factory default parameters to operate

WARNING

NOTE: Warm up time is 15seconds. After the sensor connects input power first time. the light will keep on 15seconds.then go to dimming to work normally.

NOTE: Factory Default Setting: 100% sensitivity, Fold on time: t0seconds, Daylight sensor Is 30lta. Dimming level: 30%. Dimming time: 60minutues.

NOTE: Any setting changed by DIP Switch or remote control. the led light that sensor connect will on/off as confirm.

UTILIZING FIELD AND INTRODUCTION

BRI810-B-D is a moving object sensor that can detect range of 360° and it's working frequency is 5.8GHz. The advantage of this product is stable working state (stable working temperature: -40°C~+70°C), BRI810-13 adopts a microwave sensor (high-frequency output < 0.2mW), so that it is safe and performs better than infrared sensor.

FUNCTION AND OPTIONS

The microwave sensor to achieve tri-level dimming control, for same areas that require a light change notice before switch off.

It offers 3 levels of the light Control : 100%—dimming light (0,10%,30%,50%)—off and 2 periods of selectable waiting time: motion hold-time and stand-by time. Selectable daylight threshold and choice of detection area. With sufficient natural light, the light does not switch on when presence detected.



With insufficient natural light, the sensor switches on the light automatically when person enters room.



People left, light still dims to 0%130%150% (options) standby level after the hold time.



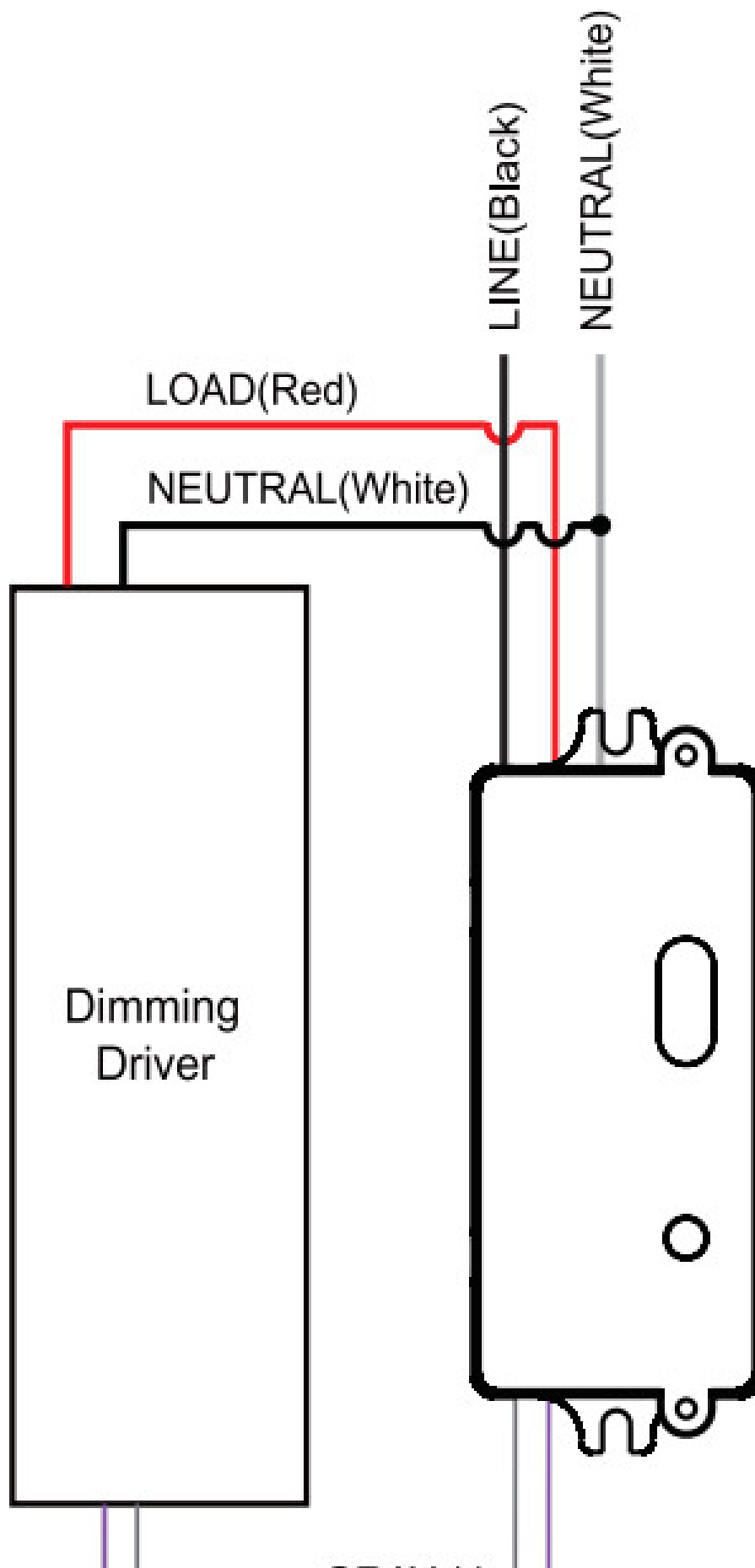
Light switches off automatically after after stand-by time elapsed.



WIRING DIAGRAMS

Wiring with dimming ballast or LED driver.

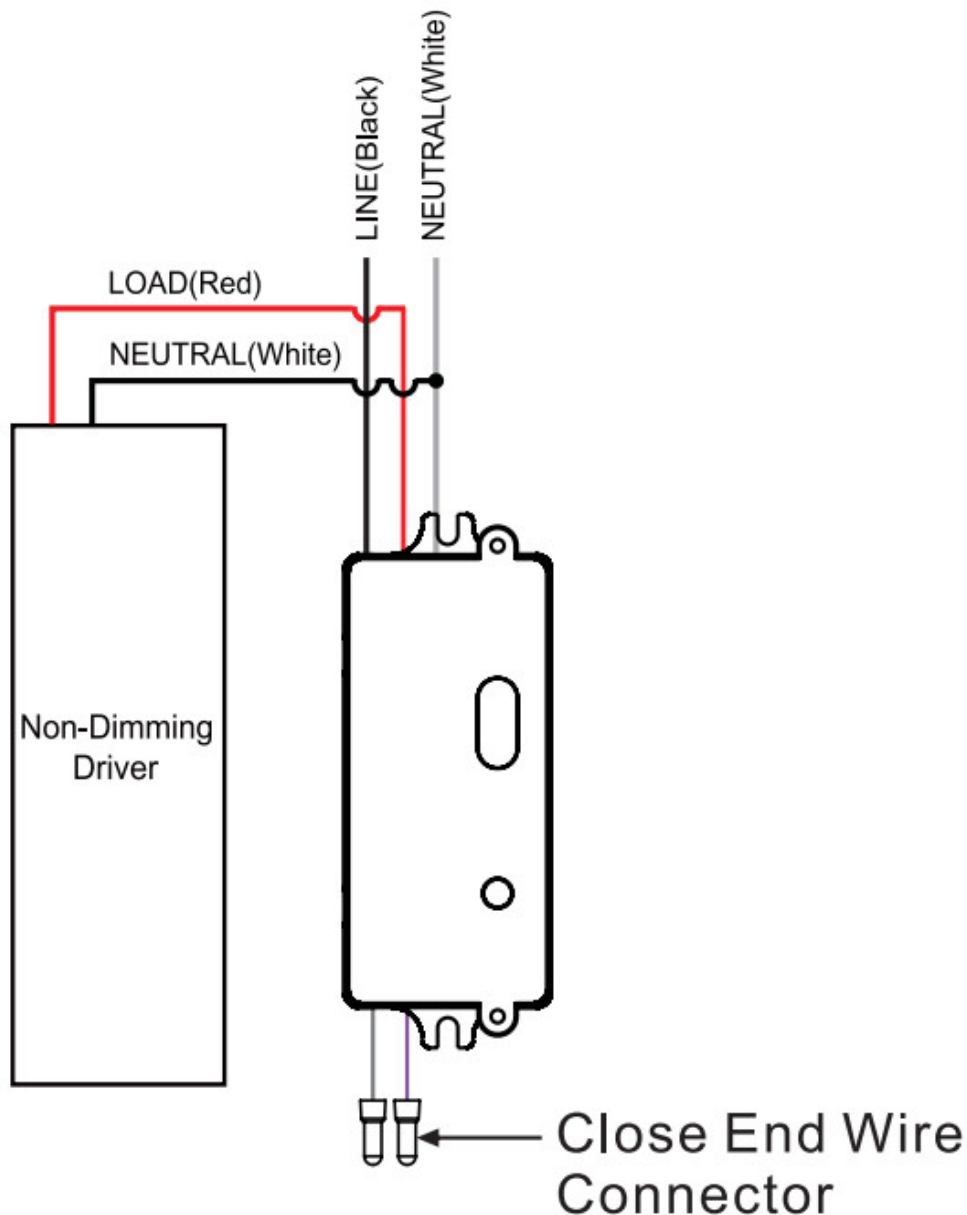
Dimming Driver





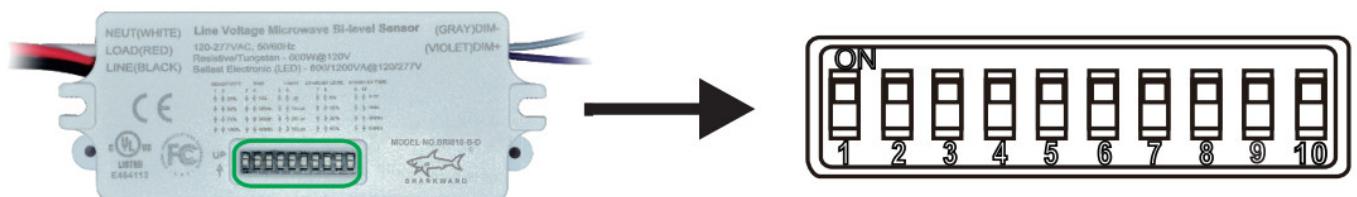
Wiring with non-dimming ballast or LED driver.

Non-Dimming Driver



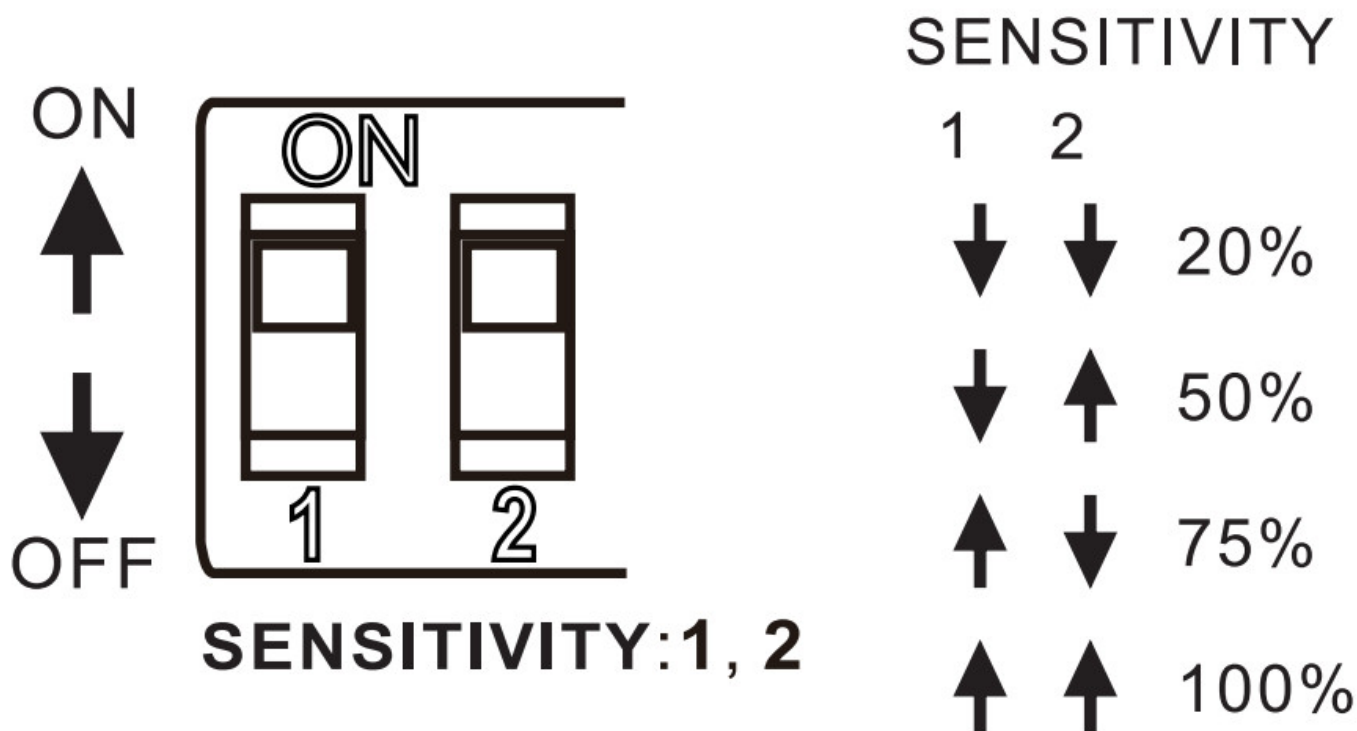
PARAMETER SETTING BY DIP SWITCH

Consider the picture: 1, 2 set sensitivity; 3, 4 set hold time; 5, 6 set the lux; 7, 8 stand-by light level ; 9, 10 set stand-by time ;



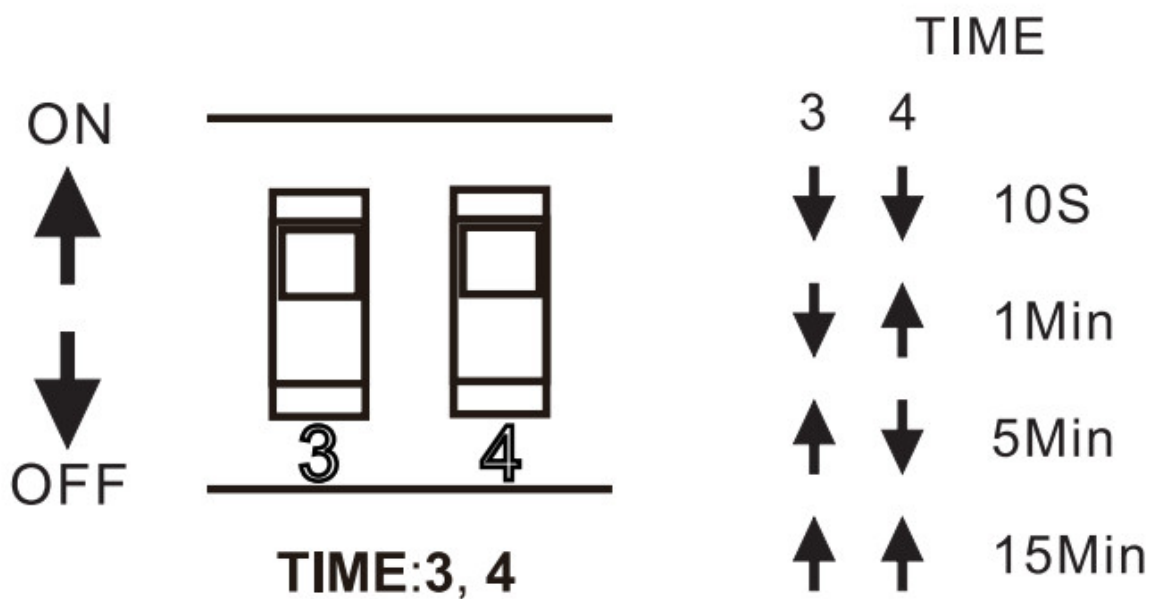
Detection Range Setting (sensitivity)

Detection range is the term used to describe the radii of the more or less circular detection zone produced on the ground after mounting the sensor light at a height of 8-20ft. pull switch to the ON position as “↑”, pull switch to the OFF position as “↓”, switch location and detection range of the corresponding table is as follows:



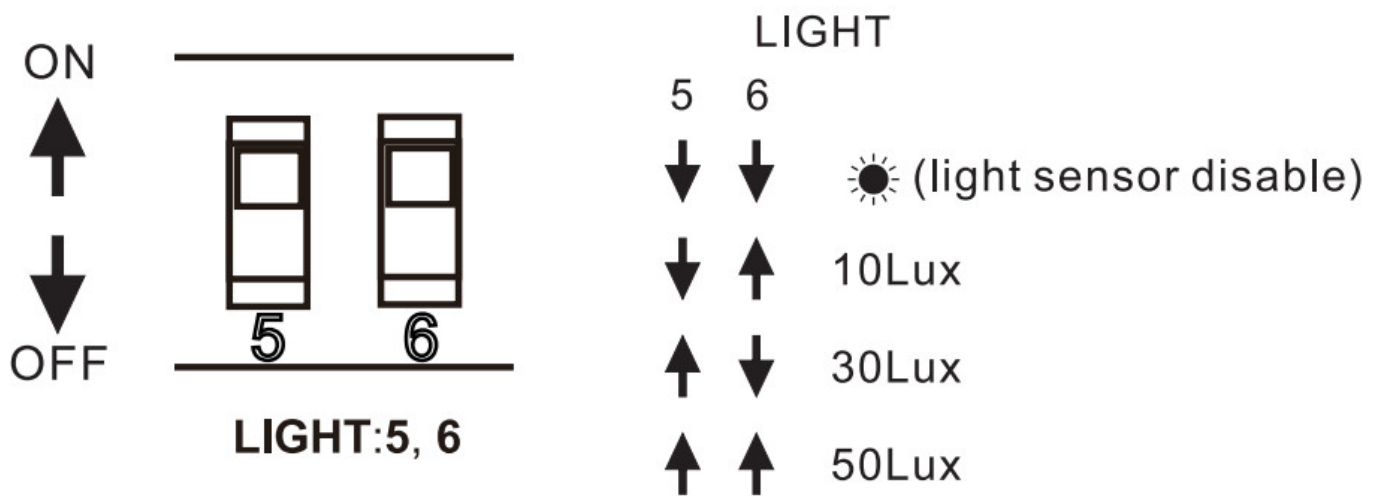
Hold Time Setting

The light can be set to stay ON for any period of time between approx.10sec and a maximum of 15min. Any movement detected before this time elapse will re-start the timer. It is recommended to select the shortest time for adjusting the detection zone and for performing the walk test. Pull switch to the ON position as “↑” is pull switch to the OFF position as “↓”, switch location and hold time of the corresponding table is as follows:



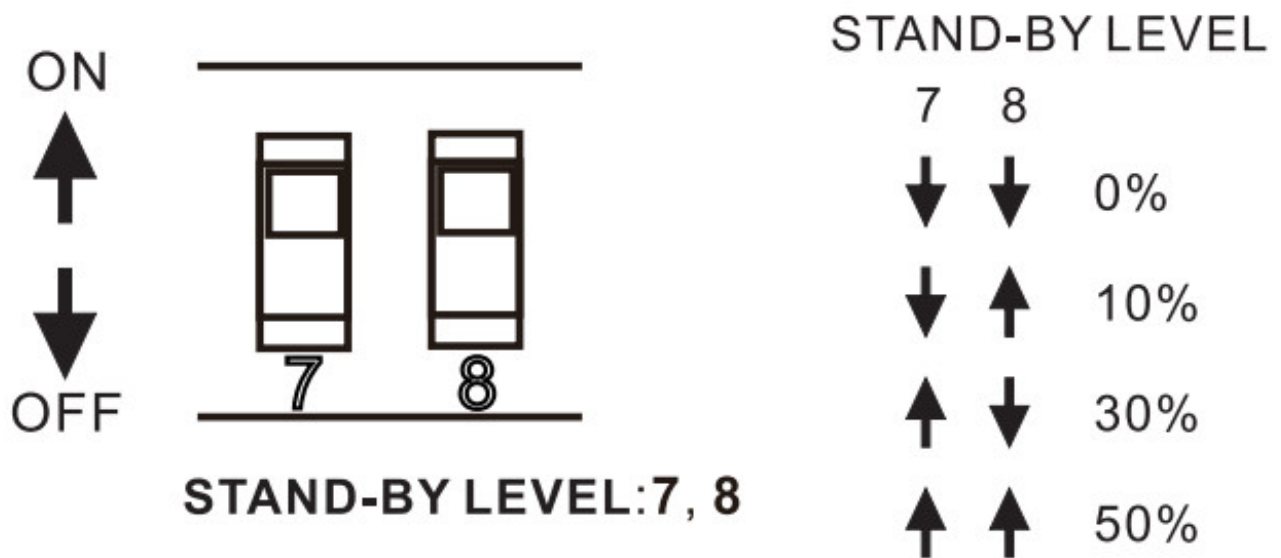
Light-control Setting

The chosen light response threshold can be infinitely from approx. 10-50lux, pull switch to the ON position as “↑” pull switch to the OFF position as “↓” switch location and light-control of the corresponding table is as follows:



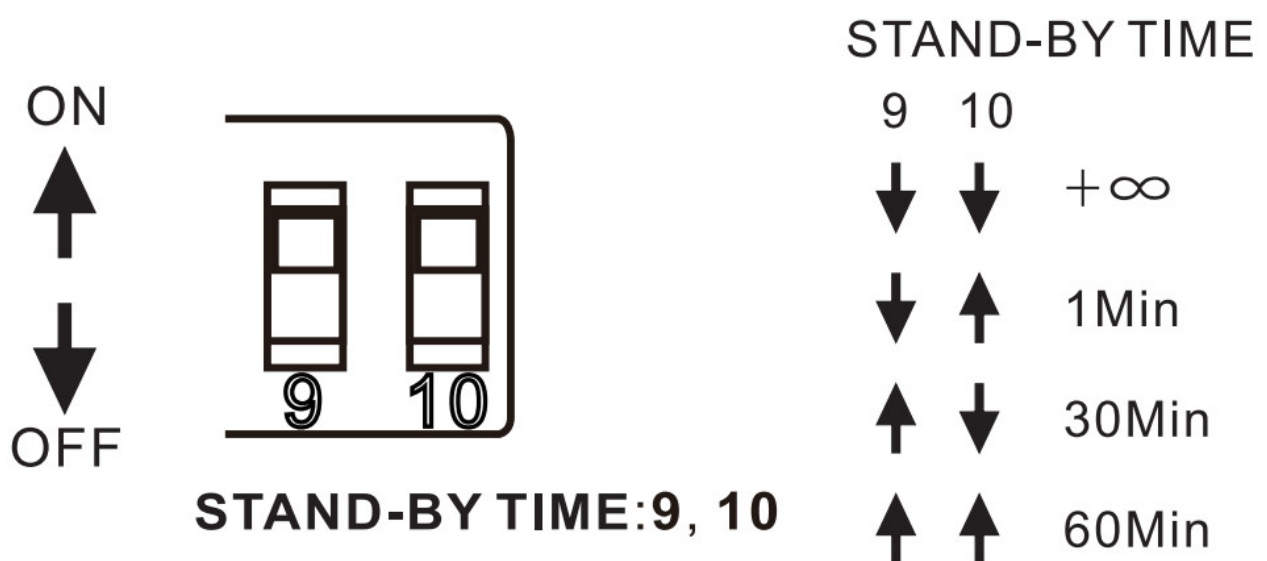
Stand-by Light Level Setting

Switch to the on is “↑”, switch to the off is “↓”; The corresponding file of switch location and stand-by level as follow:



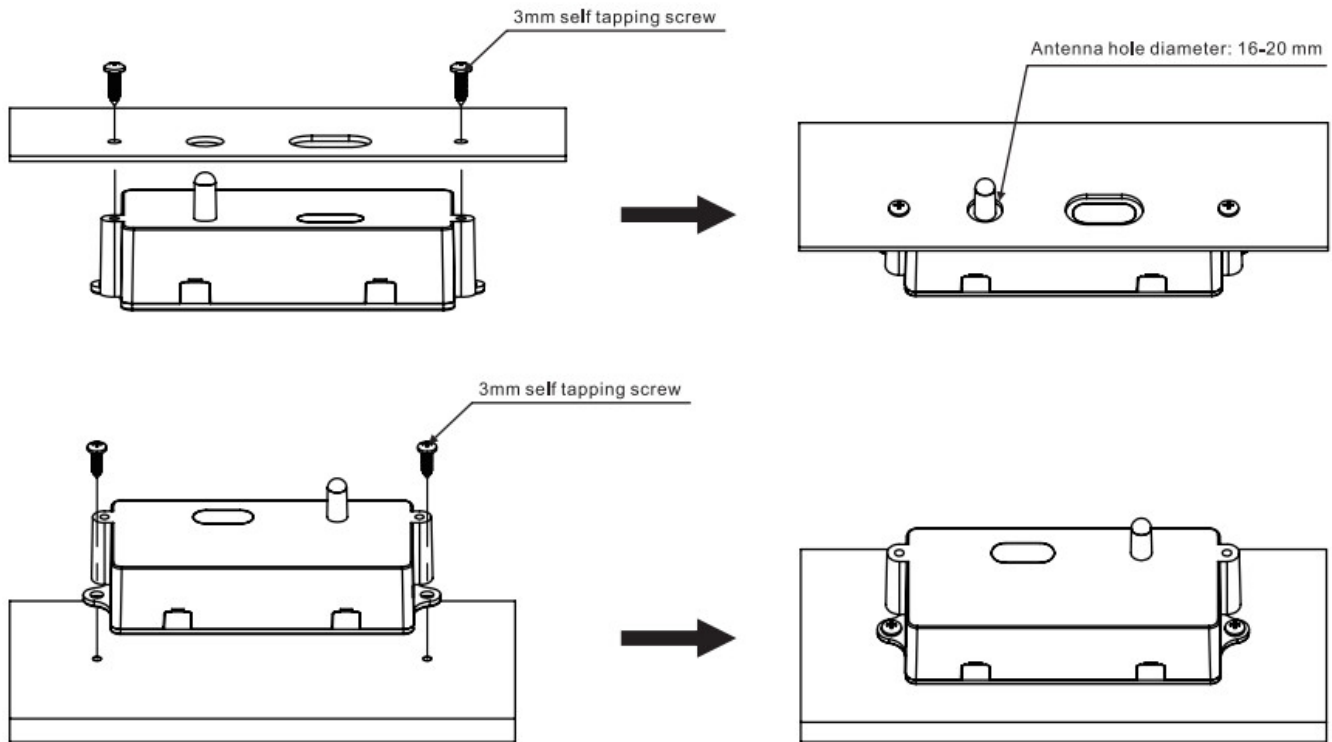
Stand-by Time Setting

Switch to the on is “↑”. switch to the off is “↓”;File of switch location and stand-by time setting as follow:



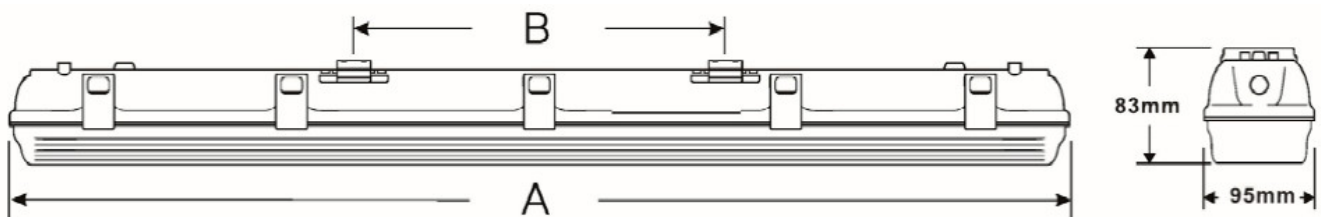
PARAMETER SETTING BY REMOTE CONTROL IN MANUAL OF RC-100.

INSTALLATION



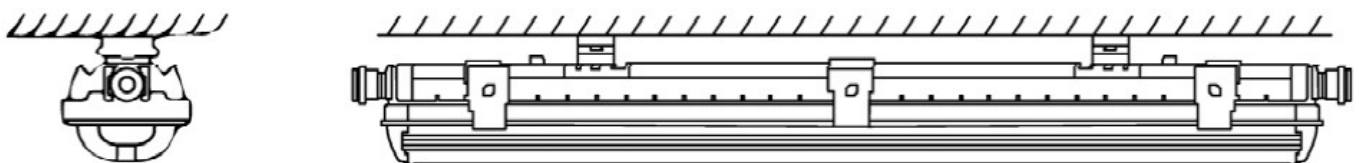
HWDP IP66 IK08

Dimensions



Reference	A	B
HWOP-*06	600mm	300-320mm
HWDP-*2	1200mm	840-860mm
HWOP-*5	1500mm	1120-1140mm

Mounting:



Drill the necessary holes in the ceiling for the mounting brackets, taking into account the distance between the mounting brackets. Open the stainless steel clips on the fixture. If necessary the LED plate with PC diffuser can be easily removed by means of a connector. Snap the base of the fixture into the mounting brackets and make the electrical connection.

Always use a suitable cable gland or seal for each cable entry to guarantee the IP value.

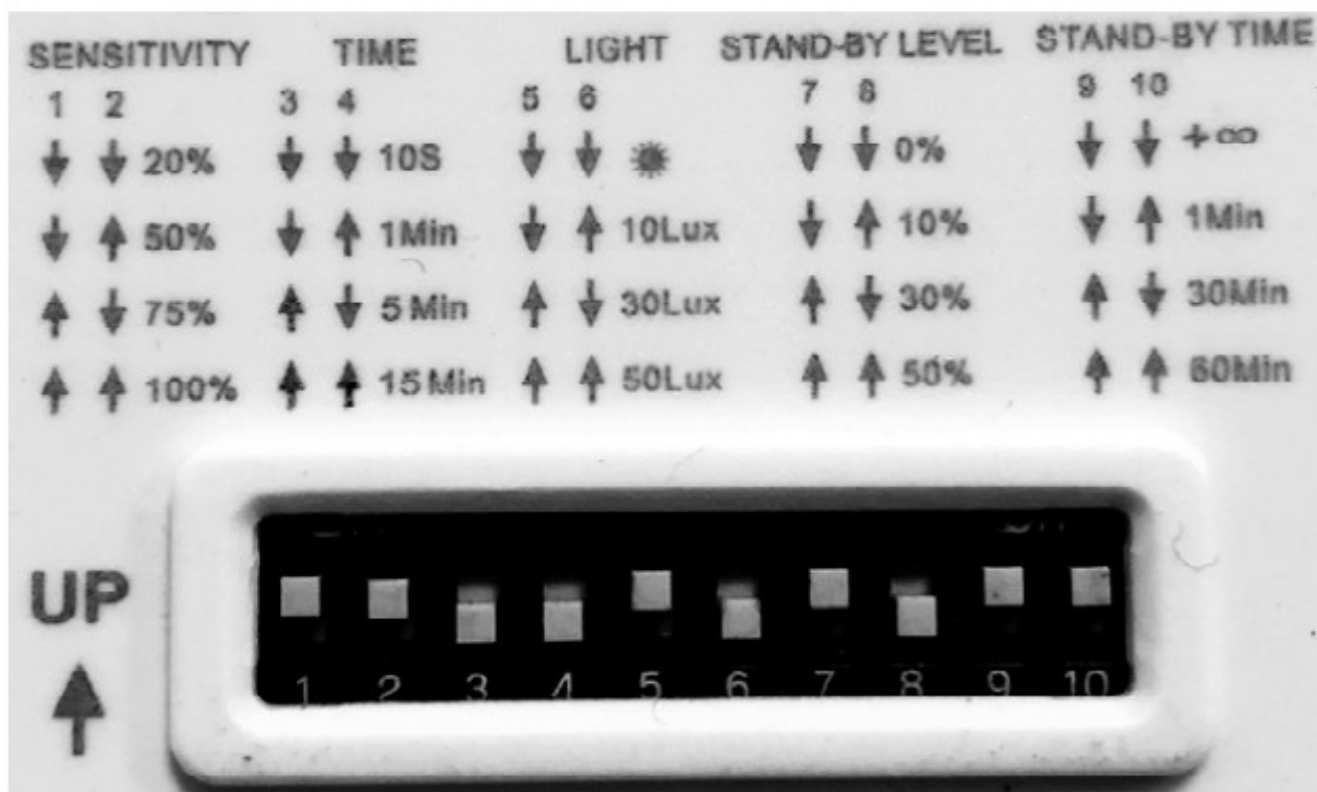
The device is only IP66 if the supplied M20 cable glands with rubber seal are used!

This fixture is suitable for an ambient temperature between -20 and - 45°C.

Devices with RF sensor:

Devices with RF motion sensor can be configured in two ways:

1. With the selector switches on the RF sensor
2. With a infra-red transmitter type INT-REMOTE (option) The universal transmitter offers the possibility to set up a series of luminaires quickly and easily.



Electrical connection:

Standard



200~240VAC

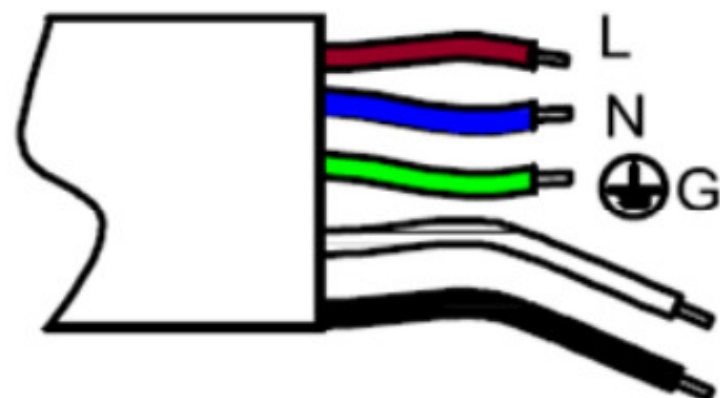
Max. 5x2,5mm²

Brown – L

Blue – N

Yellow/green – G

Dimming



Max. 5x2,5mm²

Brown – L

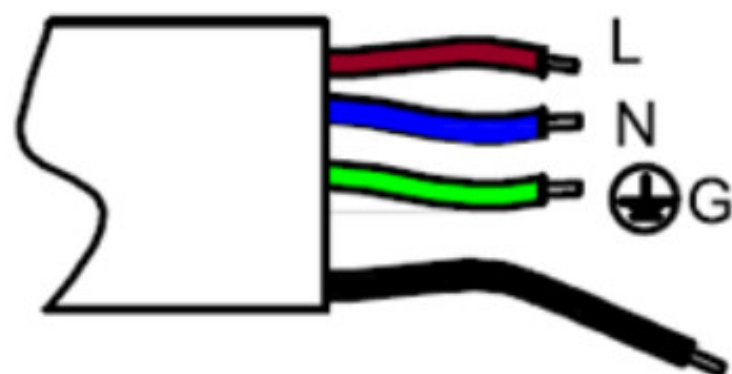
Blue – N

Yellow/green – G

Whit – DA1/DIM+

Black – DA2/DIM-

With emergency unit



Max. 5x2,5mm²

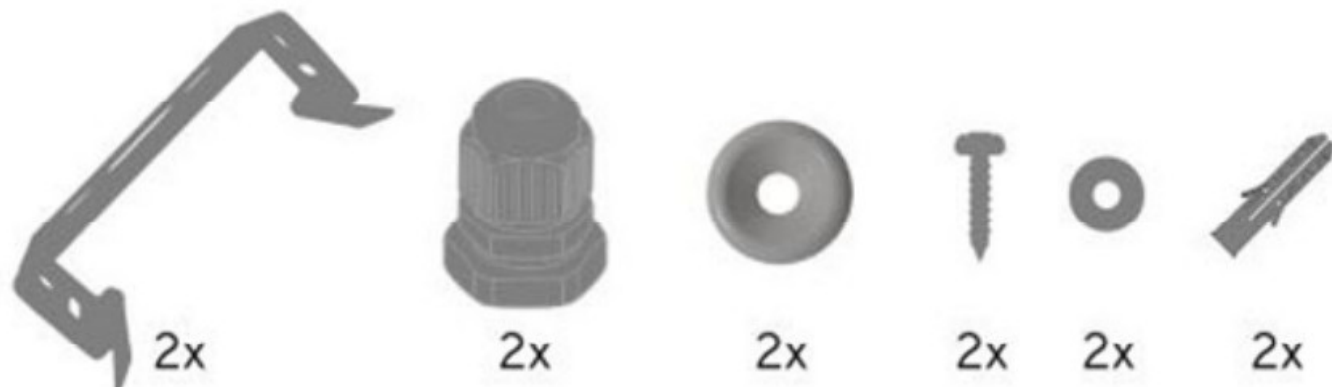
Brown – L continu

Blue – N

Yellow/green – G

Black - switched

Included mounting accessories:

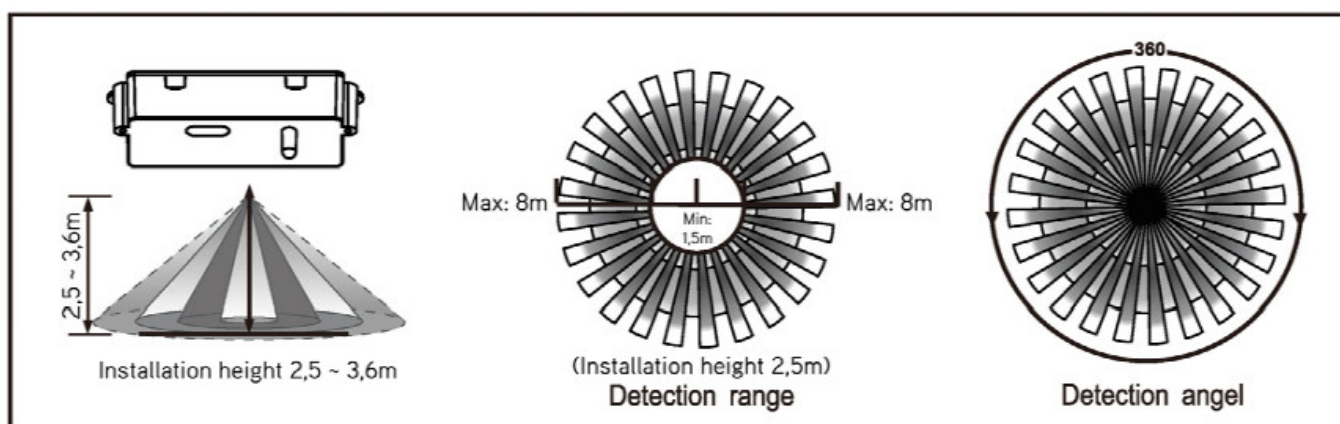


Possible options:

HWDP-SUS	Suspension set for HWDP 1.5 meter
INT-REMOTE	Remote for RF version
1-10y	Dimmable 1-10y
DALI	Dimmable DALI
RF	With RF sensor
EMS	Emergency unit 3h autotest LiFePO batt.
EMSRF	With RF sensor and emergency unit 3h

Detection range for ceiling mounting

SENSOR COVERAGE



! Installation and maintenance should always be done by qualified personnel. The light source of this fixture is not replaceable, the luminaire must be replaced at the end of its life.
 Damaged devices in original packaging are exchanged under guarantee.
 For outdoor applications, always use sturdy stainless steel studs and ensure firm anchoring.
 The grounding must be correctly connected at all times to prevent safety problems.
 Always check whether the correct connection voltage is present.

Used lamps



Always return old or defective LED fixtures to an appropriate collection point in accordance with the applicable regulations regarding environmental protection.

Used lamps can be deposited at a recycling point where they are accepted for free.

Proper use of equipment makes it possible to preserve valuable environmental resources and prevent negative consequences for health and the environment.



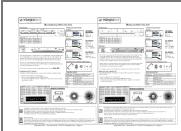
integratech

less energy, more light

Integratech bvba – Groenstraat 48
 BE3270 Scherpenheuvel – Belgium



Documents / Resources



[integratech HWDP IP66 IK08 High Output](#) [pdf] Instruction Manual
HWDP IP66 IK08 High Output, HWDP IP66 IK08, High Output

[Manuals+.](#)