



Integral INFD256GCRDLC3-197 256-Bit Security Application Program Dual Lock Instruction Manual

[Home](#) » [Integral](#) » Integral INFD256GCRDLC3-197 256-Bit Security Application Program Dual Lock Instruction Manual 

Contents

- [1 Integral INFD256GCRDLC3-197 256-Bit Security Application Program Dual Lock](#)
- [2 General Description](#)
- [3 Features](#)
- [4 Before Using the Security Application Program Dual Lock](#)
- [5 USB Flash Drive Usage](#)
- [6 Restoring to Factory Settings](#)
- [7 FAQs](#)
- [8 Documents / Resources](#)
 - [8.1 References](#)
- [9 Related Posts](#)

integral[™]

Integral INFD256GCRDLC3-197 256-Bit Security Application Program Dual Lock



Product Specifications:

- Data Encryption: AES 256 Bit
- Security: Integral Advanced Encryption Standard (AES) 256-Bit
- Dual Lock
- Compliance: FIPS-197, #1137 IEC60529 IPX8
- Types: A, C

Product Usage Instructions:

Language Setup:

To set up the language, follow these steps:

1. Access the Main Screen.
2. Select the 'Language Setup' option.
3. Choose your preferred language from the drop-down menu.
4. Click the save icon to confirm your selection.

Personal Information:

To enter personal information:

1. Proceed to the next screen after language setup.
2. Add your personal contact information if desired.
3. Click the save icon. Note that entering details is optional.

Password Management:

To manage passwords:

1. Disable the Master Password if desired during initial setup.
 - Note: This is not recommended for security reasons.
2. Reset User or Master Password by clicking on the appropriate icon in the password change screen.
3. Set a password hint for password recovery purposes.

Initializing USB Flash Drive:

To initialize the USB Flash Drive:

1. Enter all necessary details and settings.
2. Click the setting icon to format and initialize the drive.
3. Wait for the completion message on the screen.

Using Crypto Dual Drive:

To use the Crypto Dual Drive:

1. Launch secure partition by clicking on the specific icon.
2. Ensure all data put into secure partition is encrypted automatically.
3. Data access is granted only with the correct password.

Locking and Unlocking Device:

To lock or unlock the device:

1. To lock, click on the lock icon to encrypt data and log out.
2. If the device is removed from USB socket or power is suspended, partition will be locked automatically.

Before Important Notice Using the Security Application Program – TOTAL LOCK

Important notice to Administrator of Crypto Dual or Crypto Dual +

If a master password is set up on initial use then it must be made clear to the user that the master password exists as a backup option to reset the forgotten user password up to the fifth attempt. The master password must be entered before the sixth password entry attempt.

If the user enters the wrong user password six times or if they reset the USB Flash Drive to factory settings (using the reset option) then both the User Password and Master Password will be reset, allowing the user to set a new master and user password without administrator intervention.

It is the administrator's responsibility to ensure that the user is aware of this.

Important notice

Important notice to Administrator of Crypto Dual or Crypto Dual +

- If a master password is set up on initial use then it must be made clear to the user that the master password exists as a backup option to reset the forgotten user password up to the fifth attempt. The master password must be entered before the sixth password entry attempt. If the user enters the wrong user password six times

or if they reset the USB Flash Drive to factory settings (using the reset option) then both the User Password and Master Password will be reset, allowing the user to set a new master and user password without administrator intervention. It is the administrator's responsibility to ensure that the user is aware of this. Important

Notice 2. Plug in only ONE device at a time. DO NOT plug in two or more secure devices at the same time when running the security program – Dual Lock.

Important Notice 2.

Plug in only ONE device at a time. DO NOT plug in two or more secure devices at the same time when running the security program – Dual Lock.

General Description

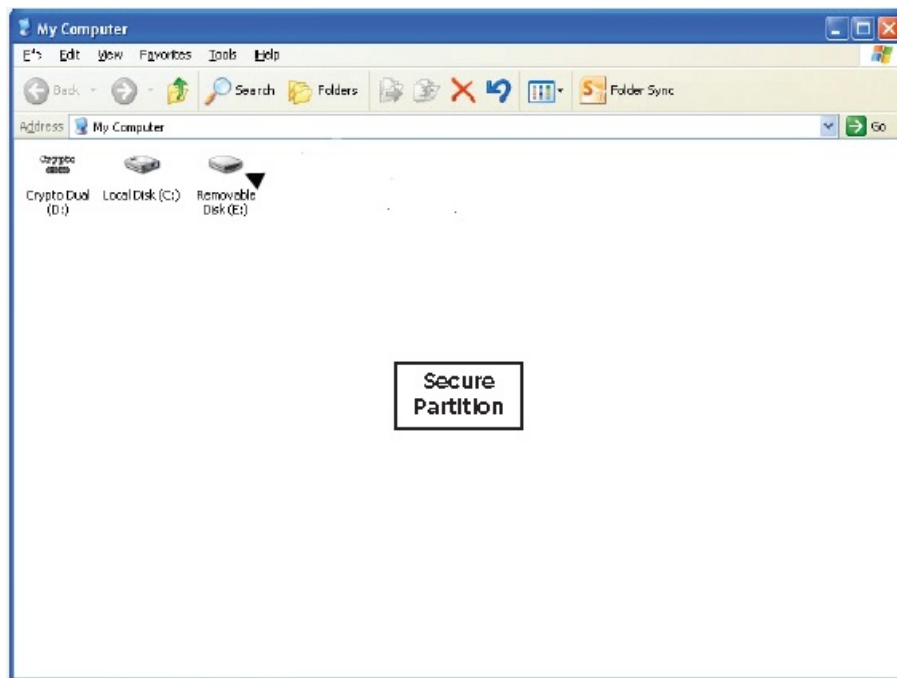
The Integral Crypto Dual and Dual+ USB Flash Drives feature 256-bit AES hardware encryption security, certified to FIPS 197. The 256-bit AES encryption program has a user interface called "Dual Lock". The Crypto Dual and Dual+ have two additional features over and above the original Integral Crypto specification. The Dual and Dual+ support a Dual Password function for straightforward management by the User and Administrator (use of the master password is optional). As a secondary feature, the Crypto Dual and Dual+ work with both Windows* and Mac * operating systems. The manual refers to "Crypto Dual". The "Crypto Dual+" is identical in operation (it has the same features but a storage capacity of 64GB and above). Using the Dual Lock application you can set up a personal private password (with a minimum of 8 – 16 characters set as upper case, lower case letters numbers and special characters).

Features

- AES 256 bit hardware encryption – Mandatory encryption of all files (100% privacy)
- Easy to Operate – program is pictorial with easy to understand icons and friendly descriptions
- Customized Password – users can choose a password of their own from 8 to 16 characters long of upper and lower case letters, numbers and special characters
- Customized Master Password – Administrators can now set a master password so the user password can be re-set without the loss of data on the drive
- Fixed Password Retry – The master & users are only allowed to type in the password 6 times, when typing in the wrong password for the sixth time; the drive will be formatted to protect the data from being exposed to others
- Friendly Reminder – there is a password hint function available, in case the master or user forgets his/her password. A password hint message can be setup, with messages up to 32 characters in length
- Multi-lingual Support – supports 26 languages
- Personal ID Function – Contact details can be added so that the drive can be returned, whilst confidential data remains secure
- Zero Footprint – No software installation required

Before Using the Security Application Program Dual Lock

When you plug your Crypto Dual drive into a USB port, the Windows® or Mac® operating system should recognise the device and show an extra "CD-ROM" and a "Removable Disk" icon. The security application program – Dual Lock — will be stored in the CD-ROM partition with auto-run function, so when you plug in your Crypto Dual to the USB port, the security program will pop up on screen automatically (remember Windows security updates has disabled auto run, so if it is disabled on your system you will need to start the program from My Computer).



Partition 1 – Secure Area

This secure area is protected by password and can only be accessed by typing in the correct password. There is no PUBLIC partition on the Crypto Dual drive. All data will be protected.

Partition 2 – CD-ROM Area

This area is a “Read-Only” area. Users can read data from this partition, but are unable to write or delete data stored in this partition. The security application program – Dual Lock will be stored in this partition with auto--run function. Password security will only apply to the secure partition and will not affect this partition.

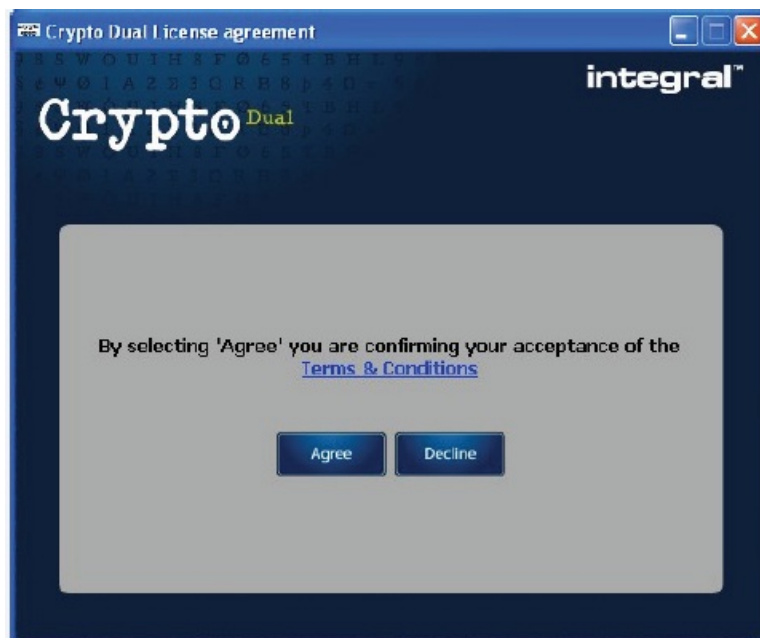
Introduction to the Security Application Program – Dual Lock

When you plug your Crypto Dual drive into a USB port, the Windows® or Mac® operating system should recognise the device and show an extra “CD–ROM” and a “Removable Disk” icon. The security application program – Dual Lock — will be stored in the CD–ROM partition with auto–run function, so when you plug in your Crypto Dual to the USB port, the security program will pop up on screen automatically (remember Windows security updates has disabled auto run, so if it is disabled on your system you will need to start the program from My Computer).

E1. Main Screen



Terms & Conditions



To move forward you will need to hit the 'Agree' button if you hit the 'Decline' button your Crypto Dual drive will close.



Language Setup


There are 26 different languages to choose from. Select the language you require from the drop-down menu. Click



icon.

The screenshot shows the 'Crypto Dual Initialize' window with the 'integral' logo in the top right. The window has a dark blue background with a faint binary pattern. In the center, there is a light gray box containing several input fields: 'Name:' with a text box containing 'Name', 'Company Name:' with a text box containing 'My Company', 'Phone Number:' with a text box containing 'My Phone', and 'Company Address:' with a larger text box containing 'My Address'. At the bottom right of this gray box are two buttons: a blue button with a white checkmark and a blue button with a white 'X'.

Personal Information

On the next screen you can chose to enter your personal contact information and then Adding your name and address details is optional. Click  icon.

The screenshot shows the 'Crypto Dual Initialize' window with the 'integral' logo in the top right. The window has a dark blue background with a faint binary pattern. In the center, there is a light gray box containing a checkbox labeled 'Disable Master Password' which is unchecked. Below this are three input fields: 'Master Password:' with a masked password '.....' and a green 'OK' button, 'Re-Type Master Password:' with a masked password '.....' and a green 'OK' button, and 'Master Password Hint:' with a text box containing 'SEA' and a green 'OK' button. Below these fields, it says 'Caps Lock: OFF'. At the bottom left, there is a red warning icon and a red text message: 'The password must be 8-16 Characters long containing Uppercase, lowercase, letters, numbers & special characters.' At the bottom right of the gray box are two buttons: a blue button with a white checkmark and a blue button with a white 'X'.

Master Password S

This screen allows the setup of a complex password for the master or Administrator. The AA must consist of between 8 – 16 characters in length and a mixture of uppercase and lowercase letters, numbers and special characters.

Crypto Dual Initialize

integral™

Crypto Dual

User Password: [password field] OK

Re-Type User Password: [password field] OK

User Password Hint: see OK

Caps Lock: OFF

The password must be 8-16 Characters long containing Uppercase, lowercase, letters, numbers & special characters.

[Checkmark] [X]

User Password Setup

This screen allows the setup of a complex password for the user. The password must consist of between 8 – 16 characters in length and a mixture of uppercase and lowercase letters, numbers and special characters.

Crypto Dual Initialize

integral™

Crypto Dual

☒ Disable Master Password

User Password: [password field] OK

Re-Type User Password: [password field] OK

User Password Hint: Snake OK

Caps Lock: OFF

The password must be 8-16 Characters long containing Uppercase, lowercase, letters, numbers & special characters.

[Checkmark] [X]

Resetting the Password for the User or Master Password

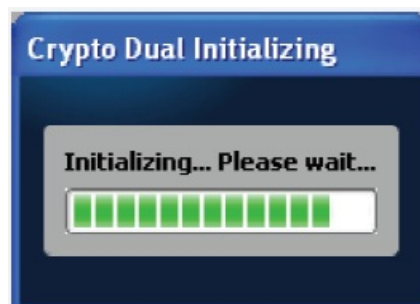
Sometimes you might want to change your password, this can be done by clicking on the Icon on the top of the main password change screen. You can then change the User password, the Master Password or the User password via the Master password login.



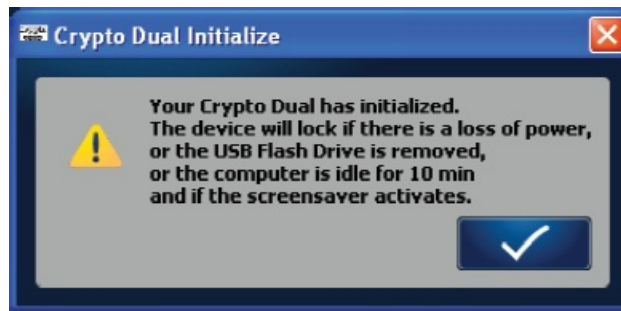
DO NOT FORGET TO ENTER A PASSWORD HINT. THIS SHOULD HELP IF YOU FORGET YOUR PASSWORD.




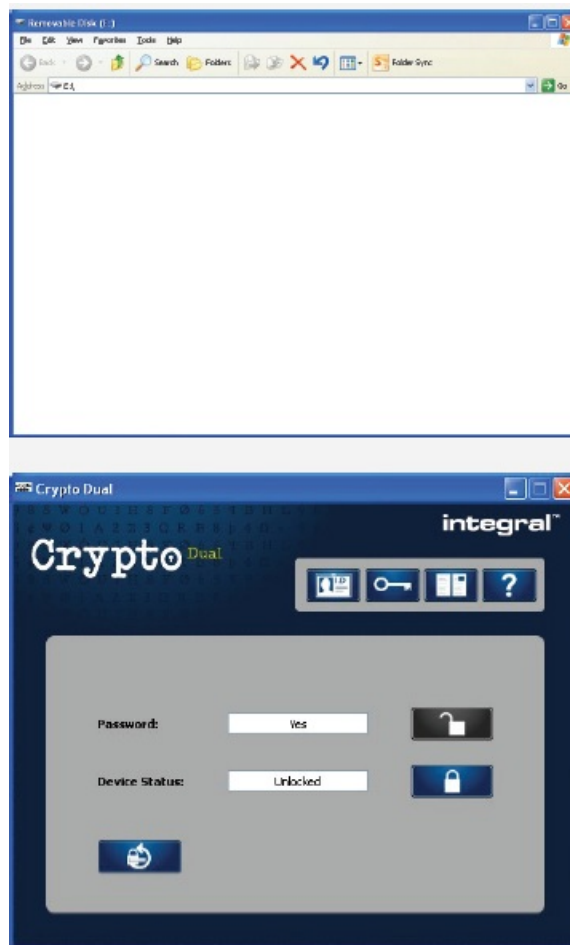
When you have entered all the details, Click  icon. This will initialize the USB Flash Drive by formatting it and setting all parameters that were entered.



When it has completed you will see the message on screen below:



When you have clicked on the  icon, this will launch the secure partition of the USB Flash Drive and the software interface will change. You will see the information about the security applied to the USB Flash Drive (i.e. Password and Device Status).N




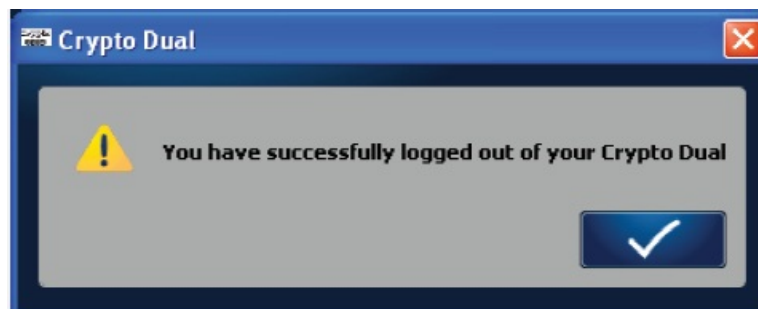
You are now ready to use the Crypto Dual drive. All data that is put in the secure partition will be fully encrypted automatically, or by locking the device via the lock icon or after removing the USB Flash Drive from the socket or if there is a suspension of power. Access to this is only granted with the correct password.

USB Flash Drive Usage

Locking the Device

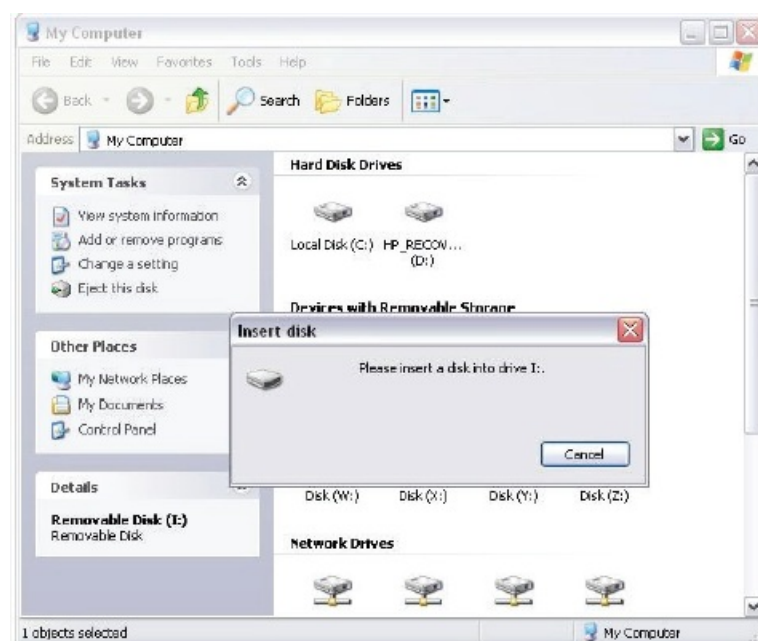


When you have your data on the USB Flash Drive, click  icon on the This will encrypt the data and log you out of the USB Flash Drive.



Unlocking the Device

If you have setup a password, when you remove your Crypto Dual drive from the USB socket (or if there is a suspension in power the screen saver activates, or the computer is idle for 15 min), the secure partition of your drive will be locked automatically. You will not be able to access this partition, nor read or write data to this partition.





To get back into the secure partition you will need to launch the Dual Lock software.



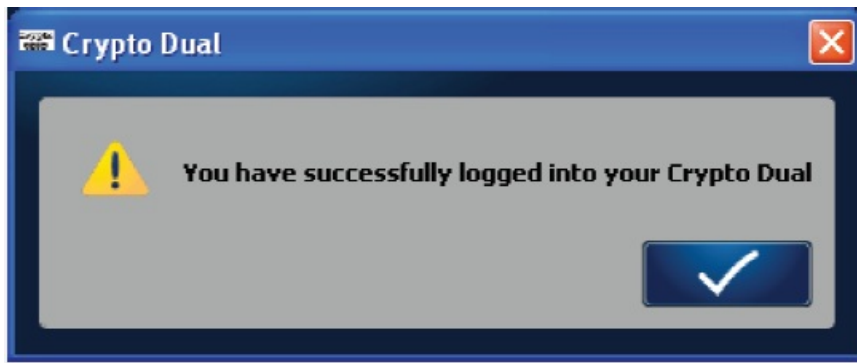
click on the  button




Input the user or master password depending on who you are. If you have forgotten your password, Click on the  icon. This will display your Password Hint (providing you have entered one).

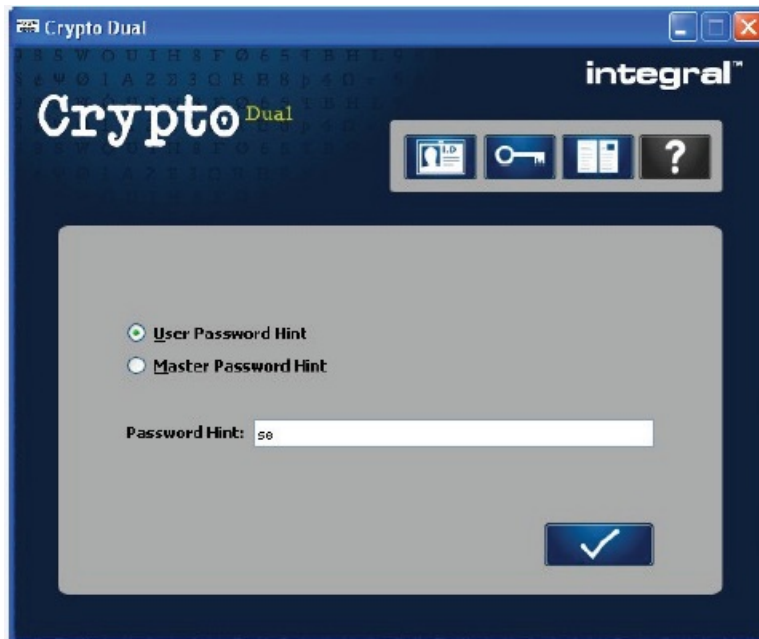
When you have completed this, click the  icon. This now unlocks the secure partition. You now have access to your data

If the title "Master Password" is highlighted in Red, this indicates to the user that a master password has been set.



Forgotten password

What happens if you forget your password? Hopefully, you would have entered a Password Hint, which will help you remember the password. click on the  icon to display your Password Hint.

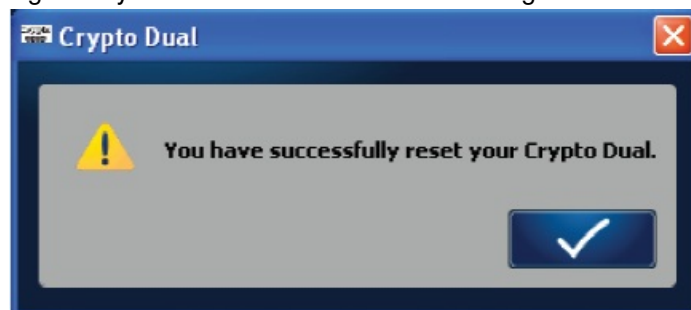


What happens if your Password Hint doesn't help you remember your password or you haven't entered a Password Hint?

The Dual Lock software will allow a maximum of 6 password attempts to be entered before it resets the Crypto Dual. Remember that if a Master Password has been set up you can take you Crypto Dual drive to your administrator and they can reset the user password. If no master password is set, you have the option of resetting the Crypto Dual which will result in the permanent loss of your data.



At this point the Crypto Dual drive is not usable until the Dual Lock application has reset. At this stage the drive will be reset back to factory settings and you will see a confirmation message when it is done.






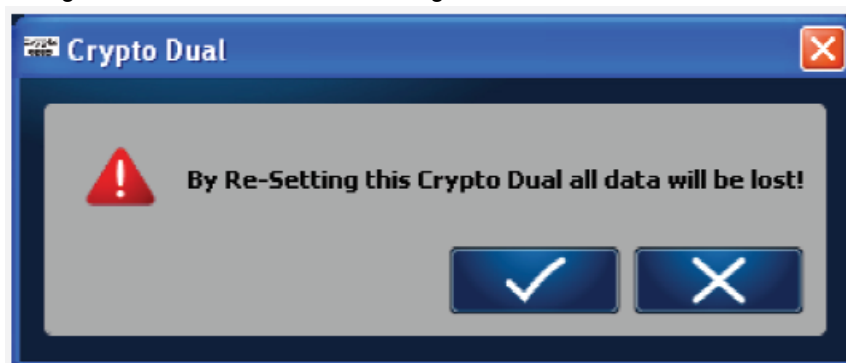
Restoring to Factory Settings

Factory Restore

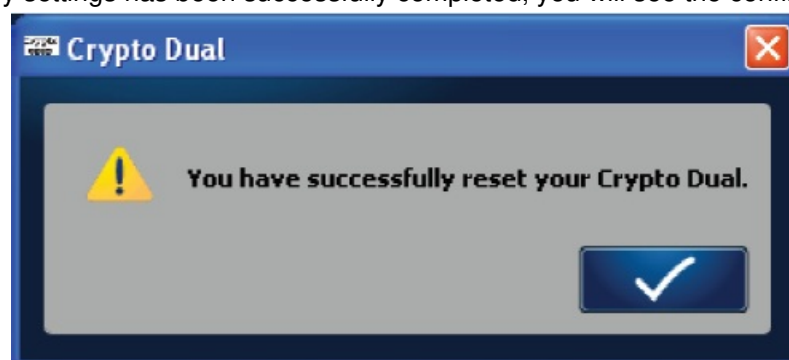
The Dual Lock software allows the user to restore the Crypto Dual drive back to factory settings. For this to be done the USB Flash Drive needs to be in the Locked status. By restoring the Crypto Dual drive back to factory settings, this will reset the device; data will be lost permanently and the drive reset.



To restore the Crypto Dual back to factory settings, click on the  icon. click the  icon You will then see a confirmation message. click the  icon again



After restoring to factory settings has been successfully completed, you will see the confirmation message.



Your USB Flash Drive is now ready to be used again.

FAQs

Q: What should I do if I forget my password?

A: If you forget your password, there might be no way to save data on the drive. It is recommended to set a password hint during setup to assist in password recovery.

Q2 My Windows XP computer cannot detect my device, what can I do?

A2 Since there is no driver required for these operating systems, the device uses the built-in driver (USB Mass Storage Class Driver) from these operating systems. If your operating system cannot find the device, then it is very likely that the built-in driver files were missing or corrupted; please try to recover these files from other computer or from the original Windows operating system CD.

Q3 When I run the Dual Lock program, it displayed Please insert the device or run this utility as privileged user?

A3 This problem may occur in Windows XP, under the following two situations. Situation 1 : You have forgotten to insert your device. Situation 2 : The security application program – Dual Lock requires some security privileges in these When logged into the account affected, run GPEDIT.MSC from the run menu (If there is not enough access use the Run As option). We now need to find the security policy Devices: Allowed to eject removable NTFS media It is located in Local Computer Policy Computer Configuration Windows Settings Security Settings Local Policy Security Options. You need to change the access from Administrators and Power Users over to Administrators and Inter Active Users.Windows operating systems. If you are not the administrator of the computer, these privileges may be restricted by administrator. Please check with your MIS or administrator of the computer to open up the privileges for you (See following method)

Q4 I am having Permission problems with my Integral Crypto Dual drive is there a fix for this?

A4 There can be several reasons for this to be happening: 1 : Your system is not patched 2 : Your User Permissions level 3 : Your Registry Windows XP Service Pack 3 should be installed and the system then fully updated.If you are still using Windows XP Service Pack 2, the following hot fix will also need to be installed. <http://support.microsoft.com/kb/297694/> When computers are imaged they sometimes get their permissions striped out, which will make your AES USB Flash Drive fail to initialise. The following registry entrees need to be set to Domain User Read: HKEY_LOCAL_MACHINE\SYSTEM\MountedDevices HKEY_LOCAL_MACHINE\SYSTEM\CurrentControlSet\Services\Disk

Documents / Resources

	<p>Integral INFD256GCRDLC3-197 256-Bit Security Application Program Dual Lock [pdf] Instr uction Manual INFD256GCRDLC3-197, INFD256GCRDLC3-197 256-Bit Security Application Program Dual Lock, INFD256GCRDLC3-197, 256-Bit Security Application Program Dual Lock, Security Applic ation Program Dual Lock, Application Program Dual Lock, Program Dual Lock, Dual Lock</p>
---	---

References

- [User Manual](#)

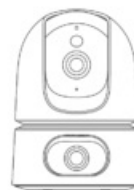
[REOKA Portable Door Lock Door Lock Security User Guide](#)

REOKA Portable Door Lock Door Lock Security Instructions for use A - Handle B - Latch C- Latch...



- [SnatchLatch Trailer Door Security Lock Instructions](#)

SnatchLatch Trailer Door Security Lock Instructions How it works Place the legs of the SnatchLatch on either side...



- v class="rp4wp-related-post-image">

[Imou QSG V1 Ranger Dual Security Camera User Guide](#)

Imou QSG V1 Ranger Dual Security Camera Parts List service.global@imoulife.com

<https://www.imoulife.com/support/faq> [@imouglobal](https://www.imoulife.com) Power On the Camera Connect...

[Manuals+](#), [Privacy Policy](#)

This website is an independent publication and is neither affiliated with nor endorsed by any of the trademark owners. The "Bluetooth®" word mark and logos are registered trademarks owned by Bluetooth SIG, Inc. The "Wi-Fi®" word mark and logos are registered trademarks owned by the Wi-Fi Alliance. Any use of these marks on this website does not imply any affiliation with or endorsement.