

[Skip to content](#)

## Manuals+

User Manuals Simplified.

# instructables YX8018 Solar LED Driver Instruction Manual

[Home](#) » [instructables](#) » instructables YX8018 Solar LED Driver  
Instruction Manual

Contents [hide](#)

[1 instructables YX8018 Solar LED Driver](#)

[2 Overview](#)

[3 Features: Features](#)

[4 Application 1 \(1 1.25V rechargeable battery\)](#)

[5 Machine Translated by Google](#)

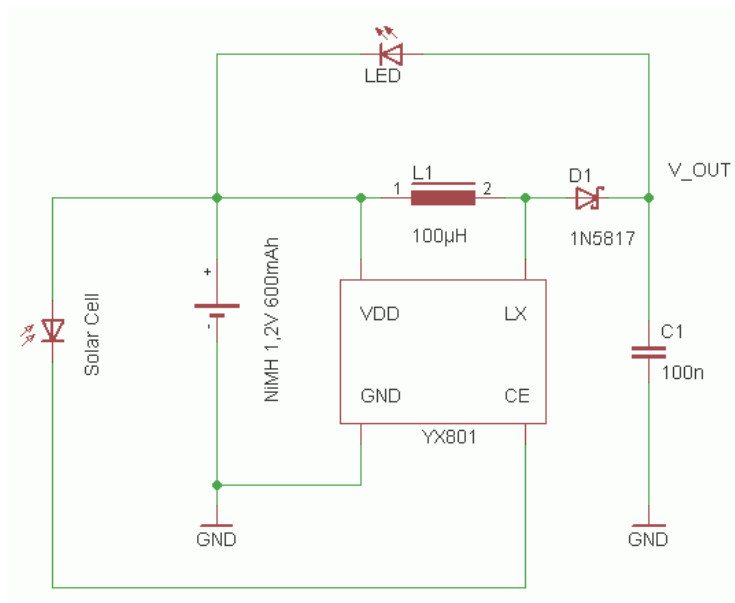
[5.1 Switch connection](#)

[6 Documents / Resources](#)

[7 Related Posts](#)



## instructables YX8018 Solar LED Driver



## Overview

YX8019 has 1 or 2 1.25V charging power

Stable lighting of LEDs in the pond . The light of the sun is saw

When it hits the battery, it charges the rechargeable battery and

Turn on the LED with a rechargeable battery charged at night

Light, automatic switching.

## Features: Features

High efficiency: 80-90%

Fewer peripherals: only one inductor

Low voltage battery protection function

Adjust current with inductor

Package: TO-94

Pin number name		function
1	Lx	Switch drain
2	GND	GND
3	THIS	The negative electrode of solar cell, EN control/charge control
4	VDD	The positive electrode of solar cell

#### Application 1 (1 1.25V rechargeable battery)

1. LED (white, blue, green)

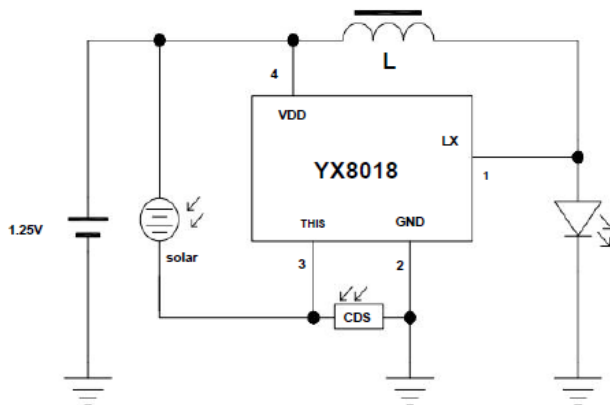


Figure 1-1 Using CDS

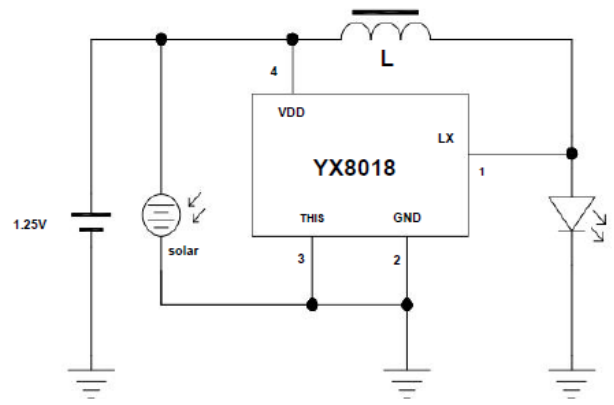
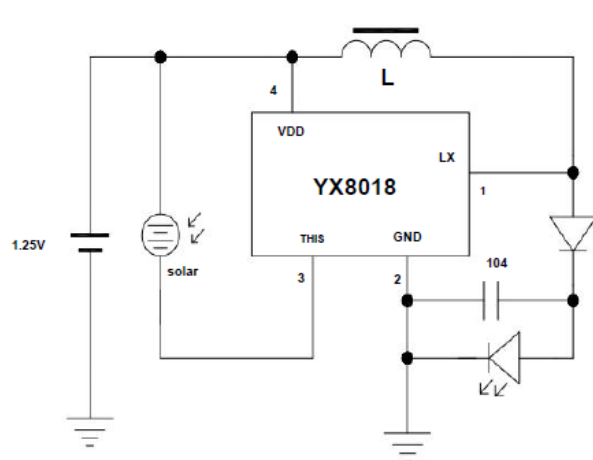
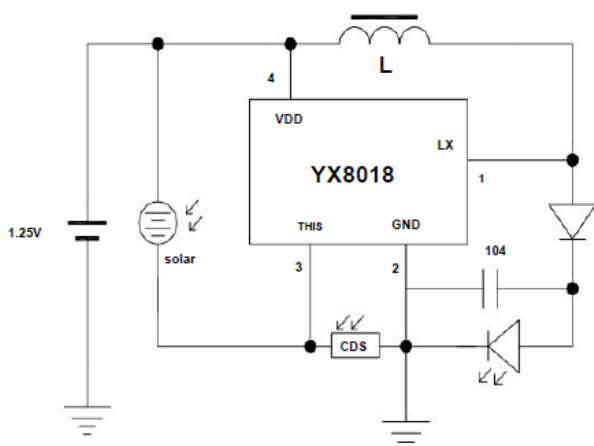


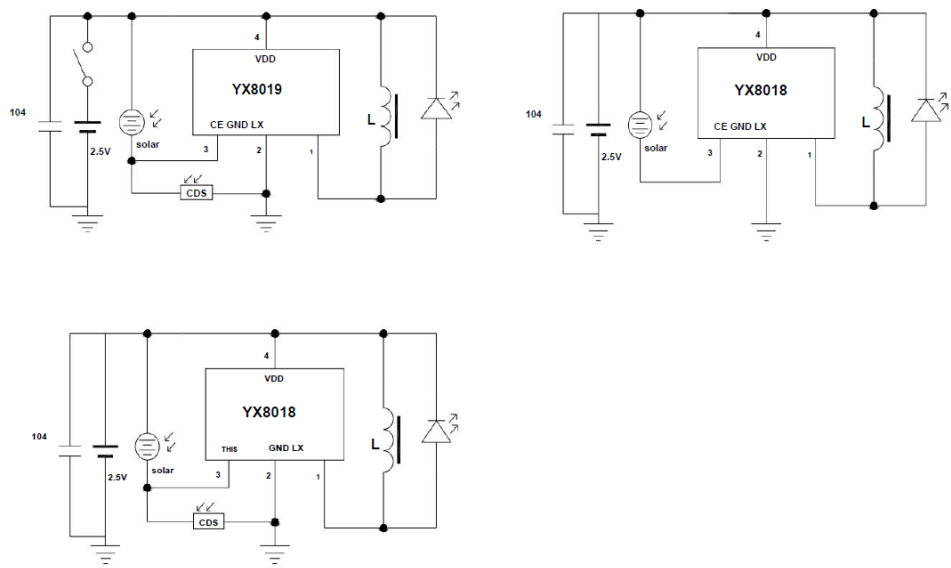
Figure 1-2 Do not use CDS

2. 7 Color Illumination LED



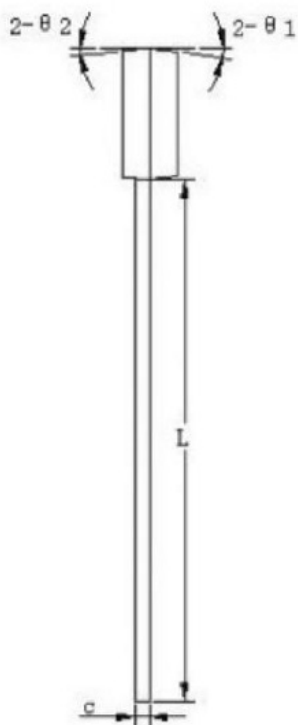
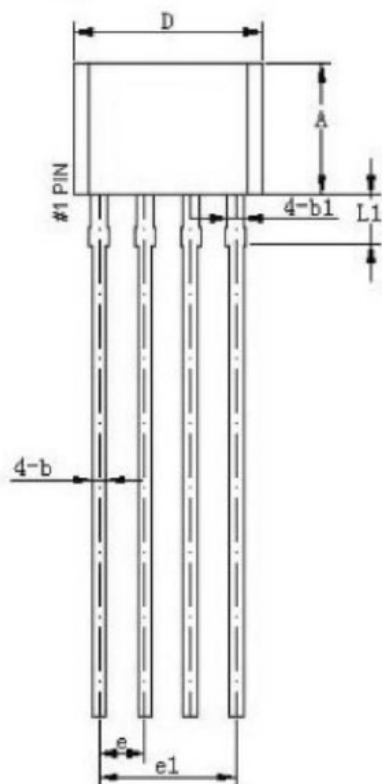
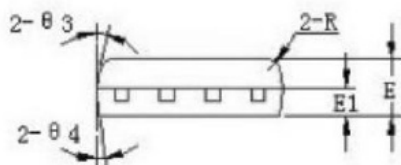
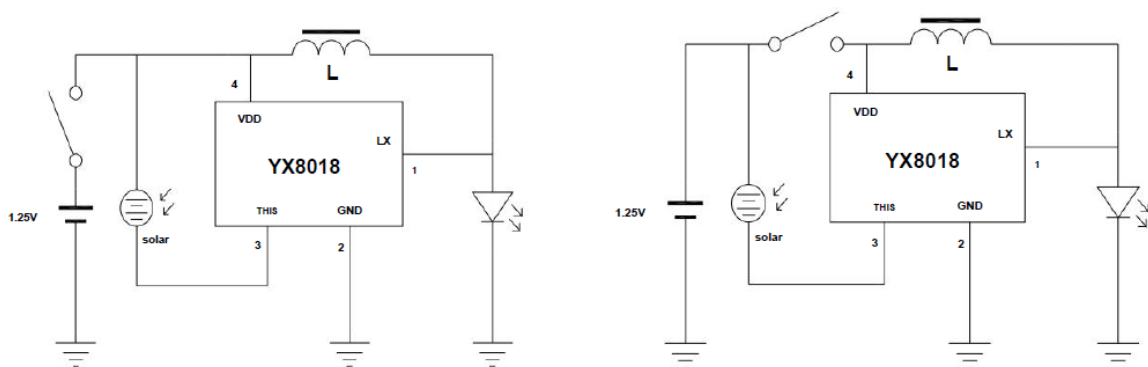
1.25V			
Inductor package		LED	current
560uH	0307	LEDx1	3.0mA
220uH			7.0mA
150uH			10mA
82uH			15mA
68uH			21mA
47uH	0410	LEDx2	30mA

(1.25V rechargeable battery x2)



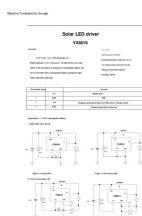
2.5V			
Inductor package		LED	current
330uH	0307	LEDx1	3.2mA
220uH			4.2mA
150uH			5.4mA
82uH			10.6mA
68uH			14.6mA
47uH			21.4mA
33 uH			29.5 mA

Switch connection



符号	机械尺寸/mm		
	最小值	典型值	最大值
A	3.55	3.65	3.75
b	0.35	0.39	0.56
b1		0.46	
c	0.36	0.38	0.51
D	5.12	5.22	5.32
E	1.46	1.56	1.66
E1		0.76	
e		1.27	
e1		3.81	
L	13.5	14.5	15.5
L1		1.42	
R		0.3	
θ 1		6°	
θ 2		4°	
θ 3		11°	
θ 4		6°	

## Documents / Resources



[instructables YX8018 Solar LED Driver](#) [pdf] Instruction Manual  
 YX8018 Solar LED Driver, YX8018, Solar LED Driver, LED Driver, Driver

## Manuals+,

- [home](#)
- [privacy](#)