



Instant Pot Duo Nova Plus V1 Smart Cooker User Manual

[Home](#) » [Support](#) » Instant Pot Duo Nova Plus V1 Smart Cooker User Manual 

Contents

- 1 Instant Pot Duo Nova Plus V1 Smart Cooker User Manual
- 2 Instant Pot® Free Recipe App
- 3 IMPORTANT SAFEGUARDS
- 4 SAVE THESE INSTRUCTIONS
- 5 Detachable Cord
- 6 Product Specifications
- 7 Overview
- 8 Anti-block Shield
- 9 Control and Features
 - 9.1 Control Panel for the Nova Plus
- 10 Control and Features
 - 10.1 Cooking Program Options
- 11 Getting Started
 - 11.1 Before using your Instant Pot®:
- 12 Initial Test Run
- 13 Pressure Cooking
- 14 Non-Pressure Cooking
 - 14.1 Sauté
 - 14.2 Slow Cook
 - 14.3 Yogurt
- 15 Usage Tips
- 16 Care and Cleaning
- 17 Troubleshooting
- 18 Warranty
- 19 DOWNLOAD
- 20 References
- 21 Related Posts

Instant Pot Duo Nova Plus V1 Smart Cooker User Manual



Instant Pot® Free Recipe App

- 500+ Free Recipes
- New User Tips
- Getting Started Videos



Thank you for selecting an Instant Pot® smartcooker! Our vision for Instant Pot® is to provide you with the right tools to enhance your food preparation experience. Our smartcookers are designed to save you time, replace a number of appliances and prepare healthy and tasty meals in a convenient and dependable way. We partner with chefs, authors, and bloggers to compile a collection of recipes that we hope you enjoy! As well, for over 500+ additional recipes, videos and more, download the Instant Pot® Recipe App. Happy Instant Pot® Cooking!

A handwritten signature in black ink that reads "Robert J. Wang".

Robert J. Wang
Founder, CEO

IMPORTANT SAFEGUARDS

When using electrical appliances, basic safety precautions should always be followed, including the following:

1. READ ALL INSTRUCTIONS.
2. Do not touch hot surfaces. Only use side handles for carrying or moving.
3. Do not place the appliance on or in close proximity to a hot gas or electric burner, or a heated oven; heat from an external source will damage the appliance.
4. Do not use near water or flame. Please keep out of direct sunlight.
5. **CAUTION:** Extreme caution must be used when moving the appliance containing hot liquids. Do not move the appliance when it is under pressure.
6. Do not use appliance for anything other than intended use.
7. For household use only. Do not use outdoors. Not for commercial use.
8. This appliance cooks under pressure. Improper use may result in scalding injury. Make certain the appliance is properly closed before operating. Refer to the "Getting Started" section.
9. Do not fill the appliance over 2/3 full. When cooking foods that expand during cooking such as rice or dried vegetables, do not fill the appliance over 1/2 full. Over filling may cause a risk of clogging the vent pipe and developing excess pressure. Refer to the "Pressure Cooking" section.
10. Before each use, check the steam release valve/handle, steam release pipe, anti-block shield and float valve

for clogging. Refer to the “Getting Started” section.

11. Do not open the appliance until the appliance has depressurized and all internal pressure has been released. If the float valve is still up and/or the lid is difficult to open, this indicates that the appliance is still pressurized –do not force it open. Any pressure in the appliance can be hazardous. Refer to the “Getting Started” section for instructions to safely remove lid.

12. Do not use this appliance for deep frying or pressure frying with oil.

13. Do not lean over or place your hands or face over the steam release valve/handle or float valve when the appliance is in operation or has residual pressure. Do not touch the metal portion of the lid when the appliance is in operation; this could result in injury.

14. Do not cover or obstruct the steam release valve/handle and float valve with cloth or other objects.

Obstructing the steam release valve/handle and float valve can create a safety issue and may cause injury.

15. Turn the appliance off if steam escapes from the steam release valve/handle or float valve in a steady stream for longer than 3 minutes. There may be residual pressure in the appliance. Allow the appliance to depressurize naturally or release all excess pressure before opening. Refer to the “Troubleshooting” section.

16. Turn the appliance off if steam escapes from the sides of the lid and ensure sealing ring is properly installed. Refer to the “Getting Started” section.

17. **CAUTION:** To protect against electrical shock, do not immerse the power cord, plugs, or appliance in water or other liquid.

18. A short power supply cord (0.6 m to 0.9 m) is provided to reduce the hazards resulting from it being grabbed by children, becoming entangled in, or tripping over a longer cord.

19. Always attach plug to appliance first, then plug cord into power source. To disconnect, turn appliance OFF, then remove plug from power source.

20. Unplug from outlet when not in use and before cleaning. Allow to cool before putting on or taking off parts, and before cleaning or storage.

21. Do not operate any appliance with a damaged cord or plug, or after the appliance malfunctions or has been damaged in any manner. Contact Customer Care.

22. Do not let power cord hang over edge of table or counter, or touch hot surfaces.

23. Intended for countertop use only. Keep the appliance on a stable, heat-resistant platform. Do not place on anything that may block the vents on the bottom of the appliance. Do not place on hot stove.

24. **WARNING:** Spilled food can cause serious burns. Keep appliance and cord away from children. Never drape cord over edge of counter, never use outlet below counter, and never use with an extension cord.

26. When pressure cooking food with a doughy or thick texture, or a high fat/oil content, contents may splatter when opening the lid. Please follow recipe instructions for pressure release method. Once steam is fully released, gently shake the appliance with extreme caution and then if necessary, release the steam again before removing the lid.

27. Before inserting the inner pot into the appliance, wipe the outer surface of the inner pot and cooking element to confirm they are dry and free of food debris.

28. Do not attempt to repair, replace, or modify components of the appliance, as this may cause electric shock, fire or injury, and will void the warranty.

29. Do not tamper with any of the safety mechanisms.

30. Do not use appliance in electrical systems other than 120V/60Hz for North America. Do not use with power converters or adapters.

31. Close supervision is necessary when the appliance is used near children.

32. This appliance should not be used by children; by individuals whose physical, sensory or mental abilities may prevent safe use of the appliance; or by individuals with limited knowledge of how to use the appliance. Close supervision is needed when using this appliance near these individuals.

33. To reduce the risk of electric shock and pressure leakage, cook only in a removable container authorized by the manufacturer.

34. The use of accessory attachments not recommended by the appliance manufacturer may cause injuries.

SAVE THESE INSTRUCTIONS



When in operation or releasing pressure DO NOT place unprotected skin over the steam release valve.



Do not move cooker when it is in operation



Do not cover or obstruct the steam release valve.



Do not force lid open when the float valve is UP. Make sure the float valve is DOWN when you open the lid.

WARNING

Read and save these safety guidelines.

When using pressure cookers, basic safety precautions should always be followed.

Detachable Cord

WARNING

Special Cord Set Instructions

As per UL safety requirements, a short power supply cord (0.6 m to 0.9 m) is provided to reduce the hazards resulting from entanglement and tripping.

This appliance has a 3-prong grounding plug. To reduce the risk of electric shock, plug the power cord into a grounded (earthed) electrical outlet that is easily accessible.

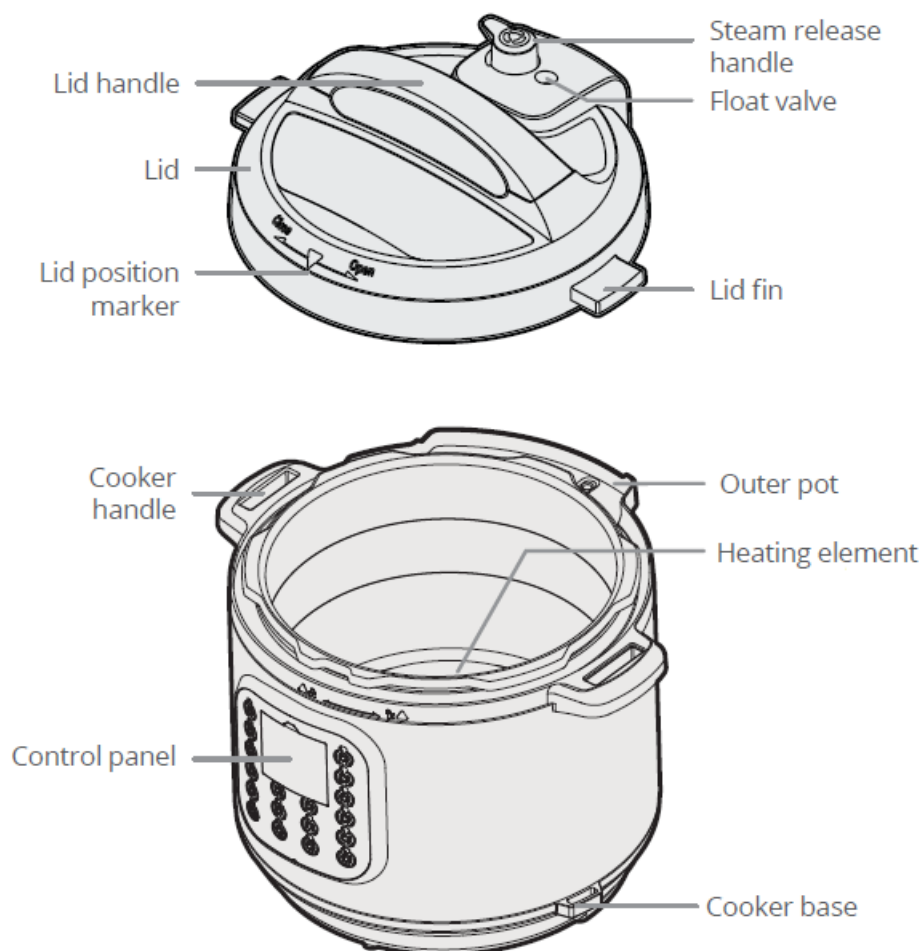


WARNING: Spilled food can cause serious burns. Keep appliance and cord away from children. Never drape cord over edge of counter, never use power outlet below counter, and never use with an extension cord.

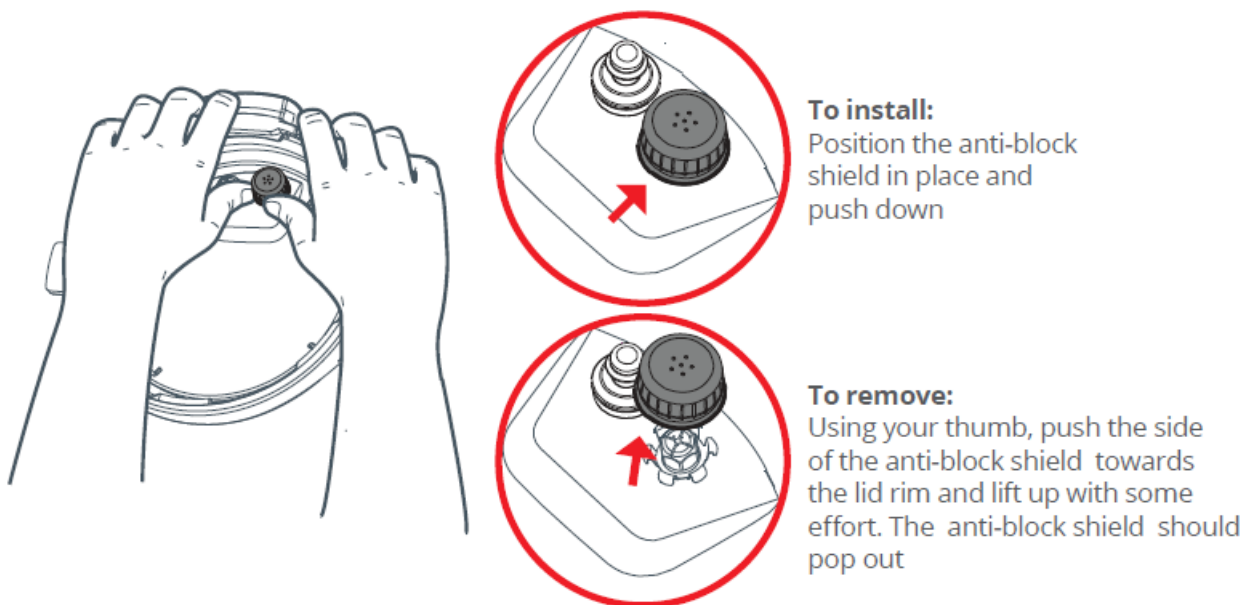
Product Specifications

Model	Power Supply	Rated Power	Volume	Inner Pot Dimensions	Product Dimensions	Weight
Nova Plus 60	120V~ 60Hz	1000 W	6 quart	15.7x 23.9 cm 6.2 x 9.4 in.	34L x 31W x 31.7H cm 13.4 x 12.2 x 12.5 in.	5.22 kg 11.5 lbs

Overview



Anti-block Shield



Control and Features

Control Panel for the Nova Plus

The control panel of your Instant Pot® Nova Plus consists of a LCD display, cooking program keys, operation keys, +/- keys to adjust time, a Keep Warm key and a Cancel key.



Instant Pot® is a programmed smartcooker that has preset cooking times for different food ingredients and cooking methods. It also remembers your most recent settings per cooking program for a more personalized cooking experience.

To return to the factory default settings, press Cancel to return the cooker to standby mode displaying OFF.

1) For individual cooking programs reset, press and hold the cooking program key until the cooker beeps, or

2) For global reset, press and hold the Cancel key until the cooker beeps

Control and Features



1. Sound ON/OFF





Press and hold the – key for 3 seconds to turn sound OFF.

Press and hold the + key for 3 seconds to turn sound ON.

2. The Pressure Level key toggles between High and Low pressure settings for pressure cooking programs. The Pressure Level key has no effect on non-pressure cooking programs: Slow Cook, Sauté and Yogurt.

3. The Delay Start key sets the delay time before a cooking program starts

4. Cooker status icons

-  Indicates that cooker is heating and cooking is in progress
-  Indicates that a pressure cooking program is selected
-  Indicates keep warm function is ON or OFF after a cooking program is finished
-  Indicates sound is ON or OFF when cooking starts and finishes. Safety alerts cannot be turned OFF.

5. The Keep Warm key turns the Auto Keep Warm function ON and OFF.

6. The Cancel key ends a cooking program at anytime, or resets the cooker to factory default settings by pressing and holding this key until the cooker beeps.

Cooking Program Options

Programs	Modes	Suggested Uses	Notes for Users
Soup Broth	Less	Soup without meat.	The soup/broth remains clear due to lack of boiling motion under pressure cooking.
	Normal	Soup with meat.	
	More	Rich bone broth.	
Meat Stew	Less	Soft texture.	Choose different modes based on the meat texture desired.
	Normal	Very soft texture.	
	More	Fall-off-the bone meat texture.	
Bean Chili	Less	Less soft texture.	Choose different modes based on the bean texture desired.
	Normal	Soft texture.	
	More	Very soft texture.	
Poultry	Less	Soft texture.	Choose different modes based on the meat texture desired.
	Normal	Very soft texture.	
	More	Fall-off-the-bone texture.	
Slow Cook	Less	Use as a food warmer or as a longer warm water soaking time.	Non-pressure cooking program. You may also use the Instant Pot® glass lid as an option.
	Normal	Corresponds to Low setting in some temperature controlled slow cookers.	
	More	Corresponds to High setting in some temperature controlled slow cookers.	
Rice	Less	Al dente white rice.	Automated cooking program. LCD displays 'Auto'. The +/- keys will not work in this program.
	Normal	Normal texture white rice.	
	More	Softer texture white rice.	
Multigrain	Less	Wild rice, brown rice, mung beans, etc.	Choose different modes based on the type of grains and the desired texture.
	Normal	Wild rice, brown rice, mung beans, etc.	
	More	Tough grains or a mixture of grains and beans.	Program includes 45 minutes of warm water soaking time prior to 60 minutes of pressure cooking.

Programs	Modes	Suggested Uses	Notes for Users
Porridge	Less	Oatmeal.	DO NOT use Quick Release as thick liquid will spatter out and block the steam release valve. See page 17.
	Normal	White rice porridge/congee.	
	More	Rice porridge/congee with various rices and beans.	
Steam	Less	Vegetables.	Use the steam rack provided to elevate food above the water. Use Quick Release method to prevent food from overcooking.
	Normal	Fish and Seafood.	
	More	Meat.	
Sauté (Brown)	Less	Simmering, thickening and reducing liquids.	NEVER have the lid on when sautéing. Maximum time is 30 minutes as a safety precaution.
	Normal	Pan searing.	
	More	Stir-frying or browning meat.	
Yogurt	Less	Jiu Niang, a sweet fermented glutinous rice dessert.	Default fermentation time is 24:00 hours. You can adjust time based on your recipe.
	Normal	Fermenting milk when making yogurt.	'Yogt' will be displayed on the screen when completed.
	More	Pasteurizing milk when making yogurt.	'boiL' will be displayed on the screen.
Pressure Cook	Less	Manual programming of pressure level and cooking time according to your favourite recipes or cooking habits.	Press the Pressure Level key to adjust pressure levels and the + / – keys to change cooking time.
	Normal		
	More		

Pressure Cooking Programs – Working Pressure

Low Pressure: 5.8 – 7.2 psi (40 – 50 kPa); High Pressure: 10.2 – 11.6 psi (70 – 80 kPa)

Working Temperature: 115 – 118°C (239 -244°F)

Non-Pressure Cooking Programs

Keep Warm function: 63 – 78°C (145 ~ 172°F);

Slow Cook function: Less mode: 82-87.8°C / 180-190°F; Normal mode: 87.8-93°C / 190-200°F;

More mode: 93-99°C / 200-210°F;

Sauté function: Less mode: 135 -150°C (275 -302°F); Normal mode: 160 -176°C (320 -349°F);

More mode: 175 – 210°C (347 – 410°F)

Getting Started

1. Read warning cards and warning labels. Remove all packaging materials and removable warning cards from the cooker and accessories.
2. Clean the inner pot, lid and accessories with water and detergent before the first use.
3. Install the condensation collector at the rear of the cooker by aligning the top of the collector with the guides on the cooker and press in.



4. Place the steam release handle on the lid.



The steam release handle does not lock tight into the lid but will fit loosely.

Before using your Instant Pot®:

1. To remove the lid, hold the handle, turn the lid counterclockwise and lift.



2. Remove the inner pot from the cooker.

3. Add food and liquids to the inner pot as the recipe directs. If required, place the steam rack on the bottom of the inner pot first. Always add at least 18 fl oz / 500 mL of liquid for minimum liquid requirement. See “Usage Tips” on page 20.

4. Wipe the outside of the inner pot dry. Make sure there is no food debris on the bottom side of the inner pot nor on the cooking element.

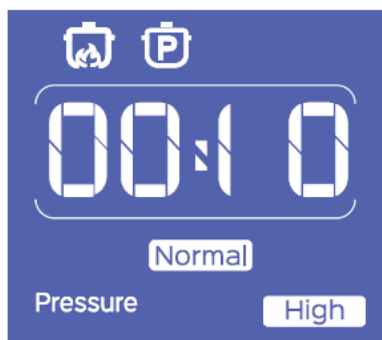
5. Put the inner pot back into the cooker. Rotate slightly to ensure that it is seated correctly.

6. Make sure the sealing ring rack is completely set in the groove on the inside of the sealing ring. Ensure there is no deformation on the sealing ring rack. Do not attempt to repair a deformed ring rack. Please contact the customer care team.

7. To place lid, reverse Step 1. Place the lid on the cooker, align the ▼ mark on the lid with the 🔓 ▲ (unlock) mark and turn clockwise to the ▲ 🔒 (lock) mark.

NOTE:

- Make sure the steam release valve, float valve and anti-block shield are clean and free of debris.
- After putting the lid on, make sure the float valve on lid top drops down.
- Do not put the lid on for the Sauté program.



Initial Test Run



To familiarize yourself with the Instant Pot® and check if the cooker is working properly:

1. Add 3 measuring cups of water into the inner pot (~19 fl oz / 540 mL).
2. Close the lid. Turn the steam release handle to Sealing position.
3. Press the Steam button and press the + / – keys to adjust time to 10 minutes.

The preheating cycle will start after 10 seconds and the cooker will display On. Traces of steam will release until the float valve pops up. The Steam program will begin when working pressure is reached. After the cooking cycle has completed, the cooker will beep and switch to Keep Warm mode if the Auto Keep Warm function is ON.

Pressure Cooking

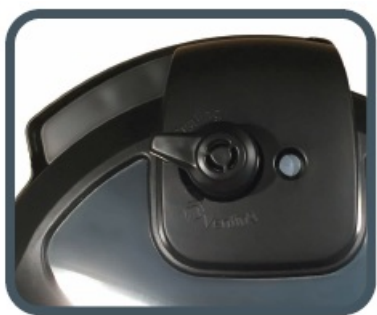
The following are all pressure cooking programs: Soup/Broth, Meat/Stew, Bean/Chili, Poultry, Rice, Multigrain, Porridge, Steam, and Pressure Cook.

WARNING

- Do not fill the inner pot more than 2/3 full. For food that expands during cooking such as rice or dried vegetables, do not fill the inner pot more than 1/2 full.
- After the cooking process has started, you can press Cancel at any time to end the program. The cooker then goes to standby mode.

1. Follow the steps in “Getting Started” pages 10 – 12.

2. Position the steam release handle to Sealing.



3. Connect the power cord. The LCD displays OFF, indicating that the cooker is in standby mode.



4. Select a pressure cooking program: Soup/Broth, Meat/Stew, Bean/Chili, Poultry, Rice, Multigrain, Porridge, Steam, or Pressure Cook.

5. Optionally, personalize pressure cooking programs as follows:

To do this	Press this button...	Followed by these steps...
Change the cooking time	Cooking Program Key	Select between three preset cooking times, Less, Normal and More by pressing the cooking program key repeatedly
	+ / –	Add/subtract time; press and hold for faster changes (except for the Rice Cooking Program)
Change the cooking pressure	Pressure Level	Select either High or Low
Set the delayed cooking time	Delay Start	1. Use the + / – buttons to set the hours 2. Press Delay Start again 3. Use the + / – buttons to set the minutes

6. 10 seconds after choosing the settings, the cooker beeps 3 times and displays On to indicate that the cooker has entered preheating cycle. If using Delay Start, the Delay Start light indicator will light up and 10 seconds after selecting this program, the delayed cooking time count down will begin. When count down is finished, the cooker will display On for the preheating cycle. Depending on the amount of food and its temperature, the preheating cycle can last from a few minutes to 40 minutes or more . As the cooker heats up and pressure builds, the float valve rises. When work-ing pressure is reached, the cooker enters the pressure cooking cycle and displays the remaining cooking time.

When the cooking cycle has finished, the cooker beeps and enters the Keep Warm mode if the Auto Keep Warm function is turned ON. The LCD displays the elapsed time (such as 00:02).

If Cancel is not pressed, the cooker will turn OFF after 10 hours.



**Users can switch Auto Keep Warm ON/OFF, adjust pressure level and cooking time at any time during the cooking process.

7. Release the pressure using one of the following methods (refer to recipe):

Natural Release: Allow the cooker to cool down naturally until the float valve drops down. This may take 10 to 40 minutes, or even more, depending on the amount of food in the cooker. Place a wet towel on the metal part of the lid to speed up cooling (do not cover the steam release).

Quick Release: Turn the steam release handle to the Venting position to let steam out until the float valve drops down. Never pull out the steam release handle while releasing steam, as escaping steam is extremely hot and can cause scalding. When cooking food with large liquid volume or starch content, immediately turn the steam release handle back to the Sealing position at the first sign of spattering.

WARNING

Quick Release should ALWAYS be closely attended.



Do not place hand over
steam release valve



Do not lean face over
cooker when it is in operation or
releasing steam/pressure

8. Press Cancel. The LCD displays OFF, indicating that the cooker is in standby mode. Open the lid. Make sure the float valve is down before opening the lid.

Non-Pressure Cooking

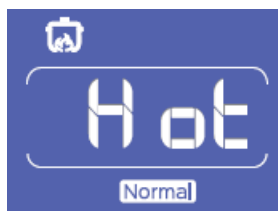
The following are all non-pressure cooking programs: Sauté, Slow Cook, Yogurt and Keep Warm.

Sauté

Connect the power cord. The LCD displays OFF, indicating that the cooker is on standby.

1. Select the Sauté program.
2. To change the cooking temperature, press Sauté key repeatedly to toggle between Less (for simmering or thickening sauce), Normal (for regular browning), and More (for stir-frying or blackening meat).
3. 10 seconds after choosing the settings, the cooking process will start. The cooker will beep 3 times and the LCD

displays On to indicate that the cooker has entered the preheating cycle. When the working temperature is reached, the LCD displays Hot.



4. Add food to the inner pot and sauté.

5. When you have finished sautéing the food, press Cancel. The LCD displays OFF, indicating that the cooker is in standby mode.

WARNING

- Do not use the pressure cooker lid during Sauté program. The display will read (the “Lid” error code) to prompt you to remove the lid. A glass lid with a venting hole may be used in substitution.
- As a safety precaution, the cooker automatically enters standby mode after 30 minutes if you have not pressed Cancel.

Slow Cook

1. You may use the Instant Pot® glass lid as an option. If using the pressure cooking lid, make sure the steam release handle is turned to Venting.



2. Connect the power cord. The LCD displays OFF, indicating that the cooker is on standby.

3. Select the Slow Cook program.

4. Optionally, modify the slow cooking program as follows:

To do this	Press this button...	Followed by these steps...
Change the cooking time	+ / –	Add / subtract time
Change the cooking temperature	Cooking Program Key	Select between three preset cooking temperatures, Less, Normal and More by pressing the cooking program key repeatedly
Set the delayed cooking time	Delay Start	1. Use the + / – buttons to set the hours 2. Press Delay Start again 3. Use the + / – buttons to set the minutes

10 seconds after choosing the settings, the cooking program will start. The cooker will beep 3 times and the cooker will enter the cooking cycle. The LCD will display the remaining cooking time. If using Delay Start, the Delay Start light indicator will light up and 10 seconds after selecting this program, the delayed cooking time count down will begin.

When count down is finished, the cooking time begins.

5. When the cooking cycle has finished, the cooker will beep and enter the Keep Warm mode if the Keep Warm program is turned ON. The LCD will display the elapsed time (such as 00:02). If Cancel is not pressed, the cooker will turn OFF after 10 hours.

6. If the lid is on, remove it by turning counterclockwise and lifting.

7. Press Cancel. The LCD displays OFF, indicating that the cooker is in standby mode.

Yogurt

1. Pasteurize Milk

- Add milk to the inner pot.
- Select the Yogurt program.
- Press the Yogurt key repeatedly to select the More mode.

10 seconds after choosing the settings, the heating process will begin. The cooker will beep 3 times and the LCD will display boil.



- When finished, the cooker will beep and the LCD will display Yogt.

If making yogurt in smaller containers: add 1 cup/250 ml of water to the inner pot, place the steam rack in the inner pot and put the containers on top of the steam rack, close the lid, select the Steam program and use the + / – buttons to set time to 2 minutes. Make sure the steam release handle is in Sealing position when running the Steam program as this is a pressure cooking program. When complete, use the natural release method (page 17) and continue with steps 2 to 4.

*The advantages of pasteurizing milk are to 1) kill pathogens and harmful bacteria, and 2) denature milk proteins for easier absorption by the body.

2. Cool Milk

- a) Remove the inner pot and place it on a wire rack.
- b) Allow the milk to cool to 115°F/46°C. Test the milk temperature with a thermometer.

3. Add Starter Culture

- a) Add starter culture to the warm milk in the inner pot.
- b) Replace the inner pot and close the lid.

The steam release handle can be left in Venting or Sealing position.

4. Ferment Yogurt

- a) Select the Yogurt program and adjust to Normal mode.
- b) Press + / – to set the fermentation time. Although the default fermentation time is 08:00 (8 hours), you can increase the cooking time up to 24 hours for easier absorption.
- c) When finished, the cooker will beep and the LCD will display Yogh.



Usage Tips

WARNING

- Extreme caution should be taken when moving the steam release handle to the Venting position. Keep hands and face away from the steam release openings. Failure to comply may result in scalding or serious injury.
- Do not attempt to open the lid until pressure inside the cooker is completely released. As a safety feature, until the float valve drops down the lid is locked and cannot be opened. Do not force lid open.
- When opening the lid, the inner pot may adhere to the lid. This is caused by vacuum due to cooling. Make sure the steam release handle is in the Venting position and all the steam is released.
- If the float valve is stuck, move the steam release handle to the Venting position. Once all the steam is released, push the float valve down with a pen or long utensil.
- Always add at least 18 fl oz. / 500 ml of water or other liquids so enough steam can be generated to cook under pressure. These include cooking sauces, wine, beer, stocks, juices of fruits and vegetables. Oils, oil-based sauces and thick cooking sauces do not have enough water content and will not account for the required liquid volume.
- Time to pressure and cooking time will vary according to the temperature and quantity of the ingredients. Food that is cold or frozen will take longer to cook than food that is at room temperature.
- When using the Delay Start program, allow sufficient cooling down time before serving.
- The Delay Start program is not recommended for porridge, oatmeal or other foamy and thick liquids. Cooking progresses should be monitored when cooking these foods.

Care and Cleaning

Unplug your Instant Pot® and let it cool to room temperature before cleaning.

- All Instant Pot® inner pots, pressure cooker lids, and accessories are dishwasher safe.
- Remove the inner pot and lid, and wash with detergent. Rinse with clear water and wipe dry with a soft cloth.
- Wipe the inner cooker base rim and slot with dry cloth to prevent rusting of the exterior cooker rim.
- Remove the sealing ring and anti-block shield from the underside of the lid. Wash with warm, soapy water, rinse with clear water and wipe dry with a soft cloth.
- The sealing ring must always be properly positioned on the under-side of the lid.
- Clean the outer body with a damp soft cloth or sponge.
- Never use harsh chemical detergents, scouring pads or powders on any of the parts or components.
- Periodically check that the steam release valve and float valve are in good working order and free of debris.

Troubleshooting

If you experience any problems with the cooker, need technical assistance or product return information, please contact the Instant Pot support team using the methods below:

- Create a support ticket: www.InstantPot.com/support/
- Email: support@instantpot.com
- Call 1-800-828-7280 ext 2 for the customer care team.

You can also find tips, videos and FAQs on www.InstantPot.com/faq/

The issues in the following tables do not always indicate a faulty cooker. Please examine the cooker carefully before contacting the support team.

Problem	Possible reason	Solution
Difficulty with closing the lid	Sealing ring not installed properly	Position the sealing ring
	Float valve in the popped-up position	Slightly press the float valve downward
Difficulty with opening the lid	Pressure inside the cooker	Position the steam release handle to the venting position to release the internal pressure. Open the lid after the pressure is completely released
	Float valve stuck at the popped-up position	Ensure steam is completely released by turning steam release handle to Venting position, Press the float valve lightly with a long utensil. Open the lid cautiously and clean the float valve and lid before the next use.
Steam leaks from the side of the lid	No sealing ring	Install the sealing ring
	Sealing ring damaged	Replace the sealing ring
	Food debris attached to the sealing ring	Clean the sealing ring
	Lid not closed properly	Open then close the lid again

Problem		Possible reason	Solution
Float valve unable to rise		Too little food or water in inner pot	Add water according to the recipe
		Float valve obstructed by the lid locking pin	Close the lid completely, see "Getting Started" section
Steam comes out from the steam release valve non-stop		Steam release valve not in sealing position	Turn the steam release handle to the sealing position
		Pressure control fails	Contact support
Display flashes "Lid"		Lid is not in the correct position for the selected program	Close the lid for pressure cooking or open the lid for sautéing
Display remains blank after connecting the power cord		Bad power connection or no power	Inspect the power cord to ensure a good connection, check if the power outlet is active
		Cooker's electrical fuse has blown	Contact support
All LCDs flash with a code appearing on screen and the warning beep is ON	C1	Faulty temperature sensor	Contact support
	C2	Faulty temperature sensor	Contact support
	C5	Temperature is too high because inner pot is not placed into the cooker base	Insert the inner pot properly
		Temperature is too high because there is no water in inner pot	Put food and water in the inner pot
	C6	Faulty pressure sensor	Contact support
	C6H	Faulty HIGH pressure sensor	
	C6L	Faulty LOW pressure sensor	
Rice is half cooked or too hard		Too little water	Adjust dry rice and water ratio according to recipe
		Lid opened too early	After cooking cycle completes, leave the lid on for 5 more minutes
Rice is too soft		Too much water	Adjust dry rice and water ratio according to recipe

Problem	Possible reason	Solution
The cooker beeps 5 times and displays 'burn' message after the cooking program started.	Indication of overheating. The cooker has reduced the heating temperature, and may not reach cooking pressure	Starch deposits at the bottom of the inner pot might have clogged heat dissipation. Stop the cooker and inspect the bottom of the inner pot
Occasional ticking or light cracking sound	The sound of power switching and expanding pressure board when changing temperature	This is normal
	Bottom of the inner pot is wet	Wipe bottom of the inner pot dry before cooking
Steam leaks from float valve for over 2 minutes	Food debris on the float valve silicone seal	Clean the float valve silicone seal
	Float valve silicone ring worn-out or missing	Replace the float valve silicone ring
Self-diagnosed Warning Displays	The word "Food burn" is displayed because food is burnt on inner pot	Remove food from cooker and deglaze inner pot, then reintroduce food
	The word "no pr" is displayed because there is not enough pressure	Add a minimum 1.5 cups (375 mL) of a thin liquid to the inner pot
	The word "PrSE" is displayed because of excess pressure.	If pressure has not fully released after 60 minutes contact the Customer Care Team.

Warranty

Limited Warranty

This Limited Warranty is effective for one year from the date of original consumer purchase. Proof of original purchase date and, if requested by an authorized representative of Instant Brands Inc. ("Instant Brands"), return of your appliance, is required to obtain service under this Limited Warranty. Provided that this appliance is operated and maintained in accordance with written instructions attached to or furnished with the appliance, Instant Brands will, in its sole and exclusive discretion, either: (i) repair defects in materials or workmanship; or (ii) replace the appliance. In the event that your appliance is replaced, the Limited Warranty on the replacement appliance will expire 12 months from the date of original consumer purchase.

This Limited Warranty extends only to the original purchaser and use of the appliance in the United States of America and Canada. This warranty does not cover units that are used outside of the United

States of America and Canada.

Any modification or attempted modification to your appliance may interfere with the safe operation of the appliance and will void this Limited Warranty. This Limited Warranty does not apply in respect of any appliance or any part thereof that has been altered or modified unless such alterations or modifications were expressly authorized by an Instant Brands representative.

Limitation and Exclusions

The liability of Instant Brands, if any, for any allegedly defective appliance or part shall in no circumstances exceed the purchase price of a comparable replacement appliance.

This Limited Warranty does not cover:

1. Damage resulting from accident, alteration, misuse, abuse, neglect, unreasonable use, use contrary to the operating instructions, normal wear and tear, commercial use, improper assembly, disassembly, failure to provide

reasonable and necessary maintenance, fire, flood, acts of God or repair by anyone unless directed by an Instant Brands Representative;

2. Repairs where your appliance is used for other than normal, personal use or when it is used in a manner that is contrary to published user or operator instructions; or

3. Use of unauthorized parts and accessories, or repairs to parts and systems resulting from unauthorized repairs or modifications made to this appliance.

The cost of repair or replacement under these excluded circumstances shall be borne by you. Disclaimer of Implied Warranties

EXCEPT AS EXPRESSLY PROVIDED HEREIN AND TO THE EXTENT PERMITTED BY LAW, INSTANT BRANDS MAKES NO WARRANTIES, CONDITIONS OR REPRESENTATIONS, EXPRESS OR IMPLIED, BY STATUTE, USAGE, CUSTOM OF TRADE OR OTHERWISE WITH RESPECT TO THE APPLIANCES OR PARTS COVERED BY THIS WARRANTY, INCLUDING BUT NOT LIMITED TO, WARRANTIES, CONDITIONS, OR REPRESENTATIONS OF WORKMANSHIP, MERCHANTABILITY, MERCHANTABLE QUALITY, FITNESS FOR A PARTICULAR PURPOSE OR DURABILITY.

Some states or provinces do not allow for the exclusion of implied warranties of merchantability or fitness, so this limitation may not apply to you. In these states and provinces, you have only the implied warranties that are expressly required to be provided in accordance with applicable law.]

Limitation of Remedies; Exclusion of Incidental and Consequential Damage

YOUR SOLE AND EXCLUSIVE REMEDY UNDER THIS LIMITED WARRANTY SHALL BE APPLIANCE REPAIR OR REPLACEMENT AS PROVIDED HEREIN. INSTANT BRANDS SHALL NOT BE LIABLE FOR INDIRECT, INCIDENTAL OR CONSEQUENTIAL DAMAGES ARISING OUT OF OR IN CONNECTION WITH THE USE OR PERFORMANCE OF THE APPLIANCE OR DAMAGES WITH RESPECT TO ANY ECONOMIC LOSS, PERSONAL INJURY, LOSS OF PROPERTY, LOSS OF REVENUES OR PROFITS, LOSS OF ENJOYMENT OR USE, COSTS OF REMOVAL, INSTALLATION OR OTHER INDIRECT, INCIDENTAL OR CONSEQUENTIAL DAMAGES OF ANY NATURE OR KIND.

Warranty Registration

Please visit <https://instantpot.com/support/register/> to register your new Instant Brands™ appliance and validate your warranty within thirty (30) days of purchase. You will be asked to provide the store name, date of purchase, model number (found on the back of your appliance) and serial number (found on the bottom of your appliance) along with your name and email address. The registration will enable us to keep you up to date with product developments, recipes and contact you in the unlikely event of a product safety notification. By registering, you acknowledge that you have read and understand the instructions for use, and warnings set forth in the accompanying instructions.

Warranty Service

To obtain service under this warranty, please contact our Customer Service Department by phone at 1-800-828-7280 or by email to support@instantpot.com. You can also create a support ticket online at www.InstantPot.com/support. If we are unable to resolve the problem, you may be asked to send your appliance to the Service Department for quality inspection. Instant Brands is not responsible for shipping costs related to warranty service, save and except for shipping costs associated with the return of your appliance from Canada or within the 48 contiguous states and the District of Columbia of the United States of America, as provided herein. When returning your appliance, please include your name, mailing address, email address, phone number, and proof of the original purchase date as well as a description of the problem you are encountering with the appliance.

The Instant Pot ® Products



- Lux 3, 6, 8 Quart
- Duo 3, 6, 8 Quart
- Max 6 Quart
- Duo Plus 3, 6, 8 Quart
- Ultra 3, 6, 8 Quart

Tools for a New Lifestyle

*The NPD Group Inc., Retail Tracking Service, Cookers Category, Dollar Sales, USA & Canada, Latest 52 Wks ending Dec, 2017.

Instant Pot® Company

11 – 300 Earl Grey Dr. Suite 383

Ottawa, Ontario

K2T 1C1

Canada

Telephone: +1-800-828-7280 ext 2

Fax: +1-613-800-0726

Web: www.InstantPot.com

US and Canada E-mail: support@instantpot.com

DOWNLOAD

Instant Pot Duo Nova Plus V1 Smart Cooker User Manual – [[Download PDF](#)]

References

- [User Manual](#)

[Manuals+](#), [Privacy Policy](#)