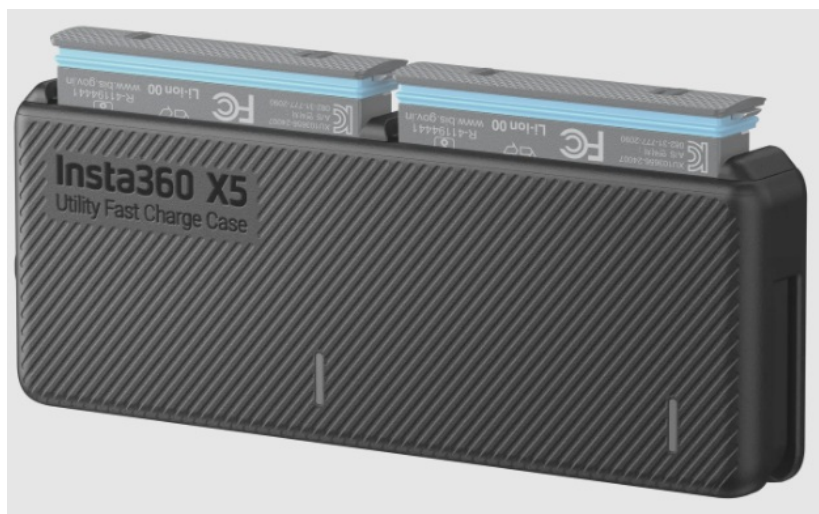


Contents [[hide](#)]

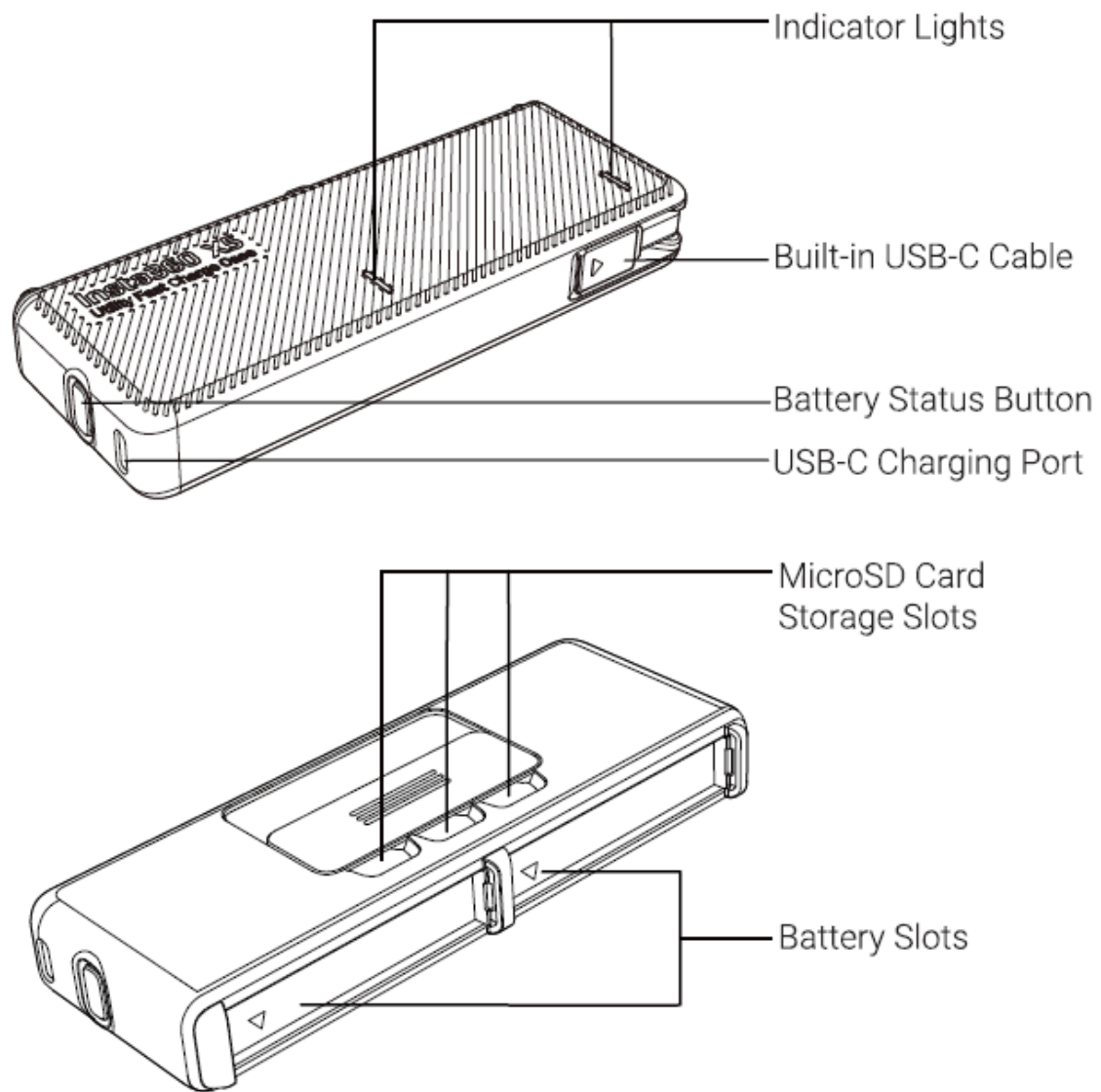
- [1 Insta360 X5 Utility Fast Charge Case](#)
- [2 Part Names](#)
- [3 Specification](#)
- [4 How to Use](#)
- [5 Indicator Status](#)
- [6 Disclaimer](#)
- [7 Documents / Resources](#)
 - [7.1 References](#)



Insta360 X5 Utility Fast Charge Case



Part Names



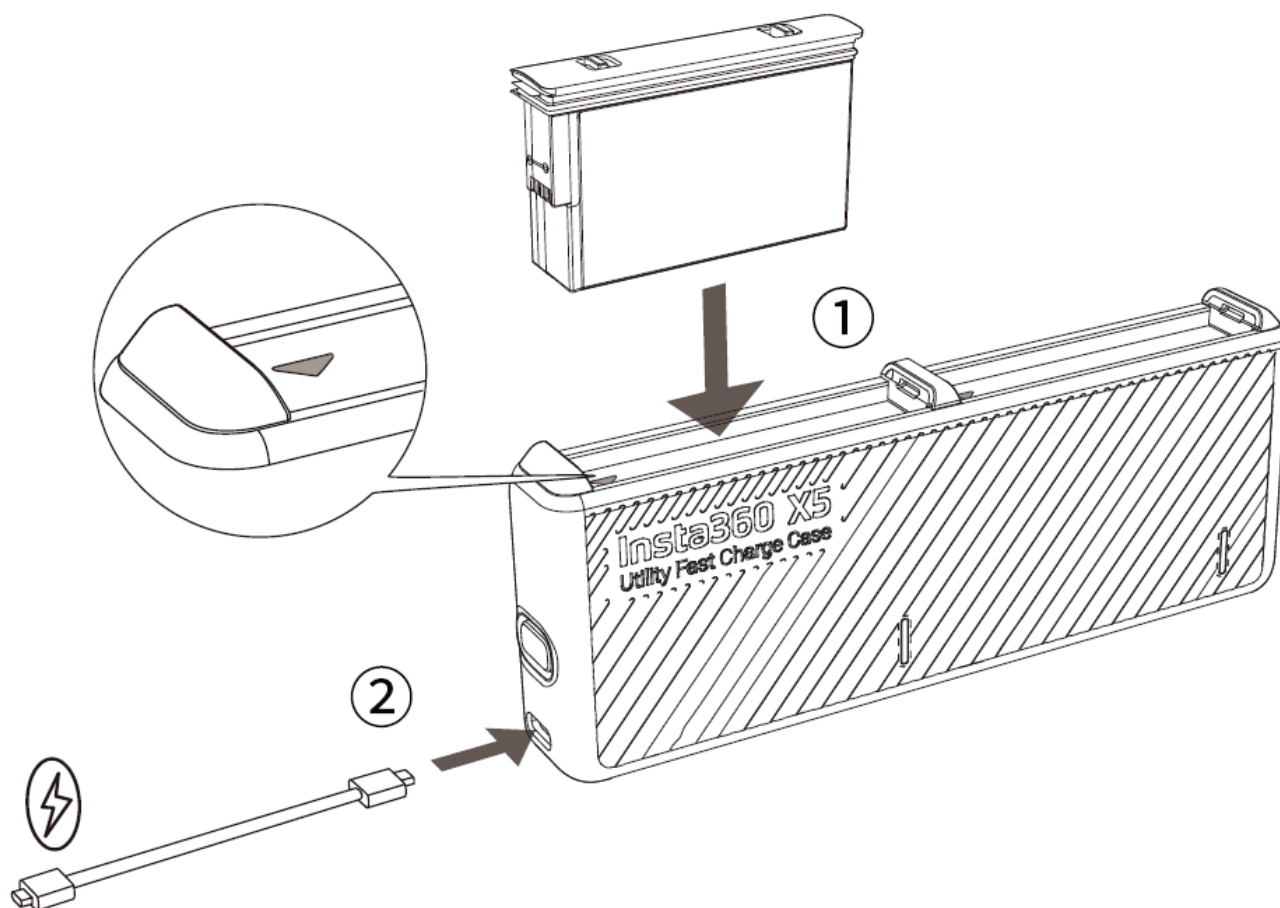
Specification

USB-C Charging Port	Input: 5V 3A; 9V 3A; 12V 3A
Built-in USB-C Cable	Input: 5V 3A; 9V 3A; 12V 3A Output: 5V 2A
Full charging times (tested by using a PPS 36W power adapter)	One 2400mAh battery: 35 minutes Two 2400mAh batteries: 60 minutes

Operating Environment	32°F to 104°F (0°C to 40°C) *Charging may be slower when used below 50°F(10°C)
Dimensions	151.6×21.4×57.5mm (6.0×0.8×2.3in)
Weight	103g (±1 g)/3.6oz(0.04oz)

How to Use

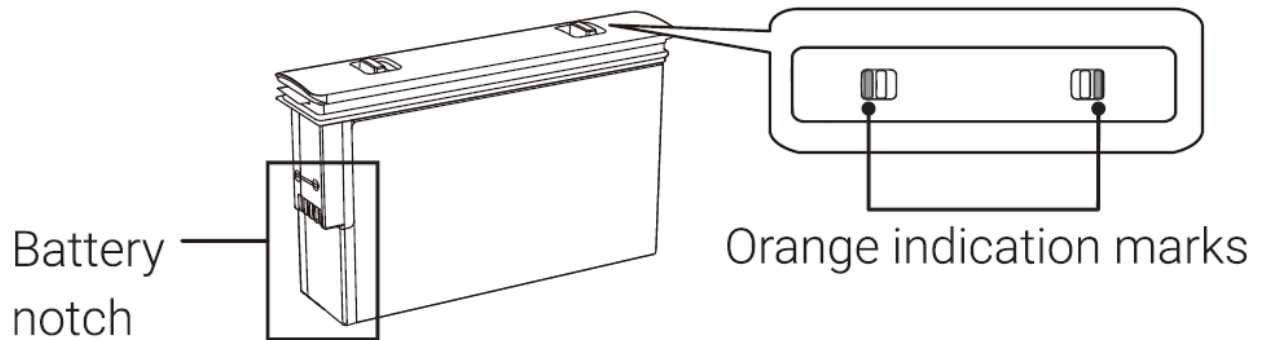
Charge batteries using the USB-C charging port



1. Align the notch of the battery with the triangular mark on the battery slot then insert. The battery is securely slotted when the orange indication marks on the top of the battery are no longer visible.
2. Connect the Utility Fast Charge Case to a power adapter with a USB-C cable into mains electricity (7 00-240V, 50/60Hz) to begin charging the battery.

Notes:

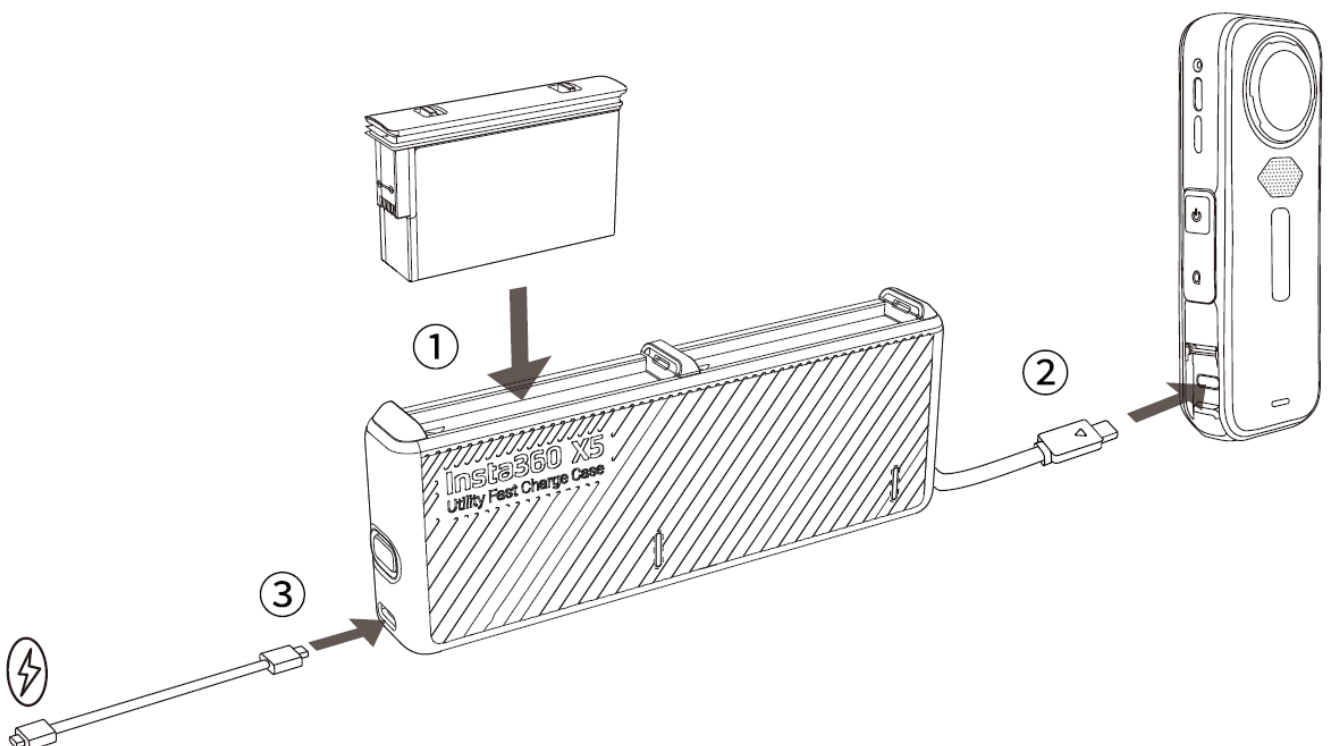
- To prevent damaging the battery and case, only insert the battery into the Utility Fast Charge Case in the manner shown in the manual. The orange indication marks on the battery cover should not be visible.



- The Utility Fast Charge Case can charge two batteries. When charging, the case will prioritize and fast charge the battery already closest to a full charge.
- 12V = 3A adapters are recommended for use with the Utility Fast Charge Case. 12V, 9V and 5V adapters are also compatible.



Charge batteries and Insta360 X5 simultaneously

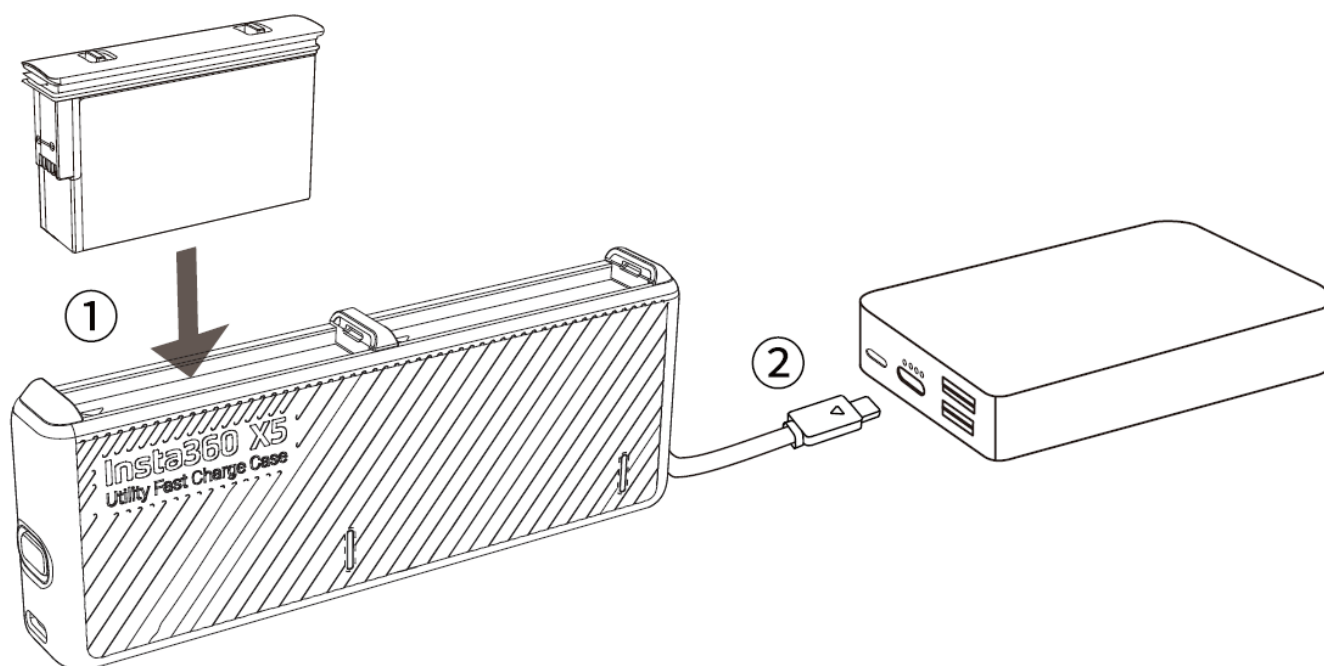


1. Align the notch of the battery with the triangular mark on the battery slot, then insert. The battery is secure when the orange indication marks on the top of the battery are no longer visible.
2. Use the built-in USB-C cable to connect Insta360 XS to the Utility Fast Charge Case.
3. Connect the Utility Fast Charge Case to mains electricity (100-240V, 50/60Hz) by using a USB-C cable and power adapter to charge the battery/batteries and Insta360 XS simultaneously.

Notes:

- Do not connect Insta360 XS to the Utility Fast Charge Case without a battery/batteries inserted to avoid reverse charging.
- When charging Insta360 XS and a battery/batteries in the slot(s) simultaneously, the Utility Fast Charge Case will prioritize the X5.
- When charging a device other than Insta360 X5 and a battery/ batteries simultaneously, the Utility Fast Charge Case will prioritize the device until it is mostly charged. It will then switch to charging the battery/batteries.

Charge batteries using built-in USB-C cable

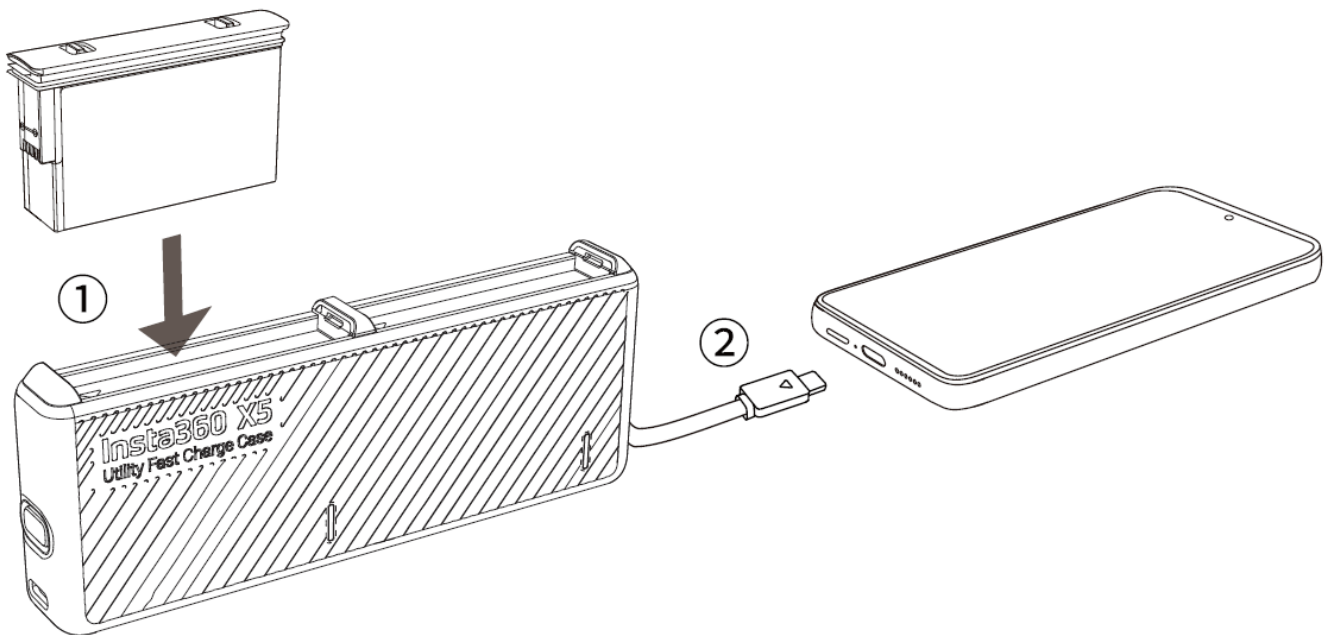


1. Align the notch of the battery with the triangular mark on the battery slot, then insert. The battery is secure when the orange indication marks on the top of the battery are

no longer visible.

2. Connect the Utility Fast Charge Case to a power bank (input 5V = 3A, 9V = 3A, 7.2V = 3A) with the built-in USB-C cable to charge the battery. Alternatively, you can connect the Utility Fast Charge Case to a power adapter and mains electricity (100-240V, 50/60Hz) with the built-in USB-C cable.

Charge devices with built-in USB-C cable

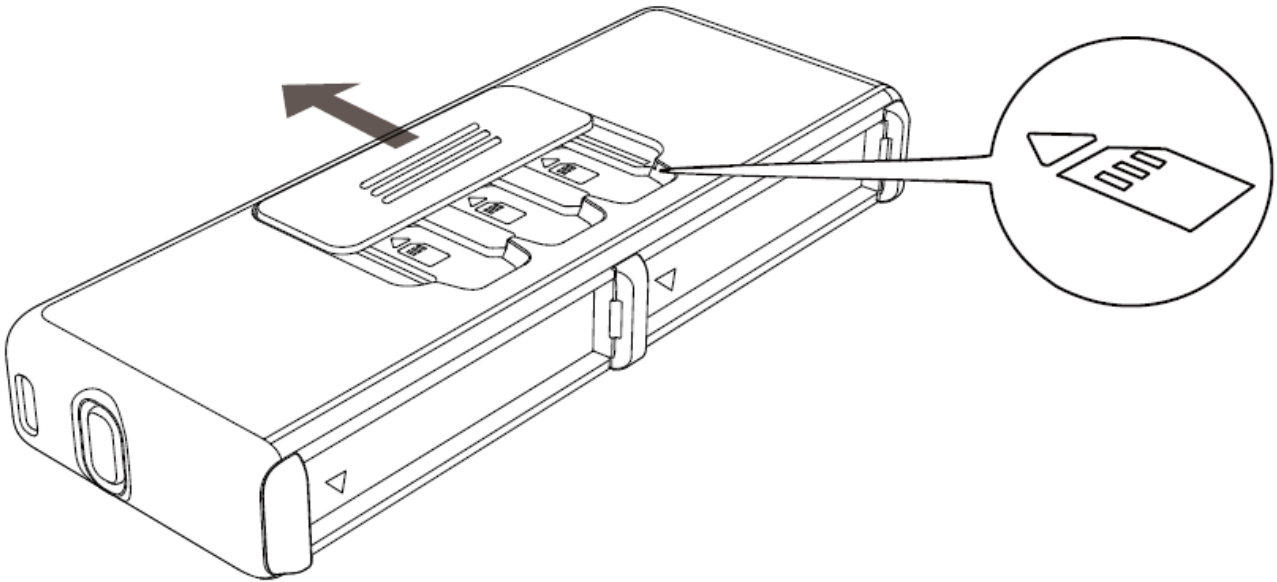


1. One or two batteries with a $\geq 20\%$ charge must be in the Utility Fast Charge Case to start charging an external device. Follow the steps above to insert the battery.
2. To charge a USB-C compatible device such as a smartphone, a tablet or a camera, use the built-in USB-C cable to connect the device to the Utility Fast Charge Case.

Notes:

- To charge an external device with the Utility Fast Charge Case, you must use a battery with a power level of at least 20%, otherwise charging will not start. If two batteries are being used, the case will use the battery with the most power.
- If the device being charged by the Utility Fast Charge Case has a larger power capacity than the inserted battery/batteries, the device cannot be fully charged without connecting the case to mains electricity.

Store microSD cards



Remove the cover on the back of the Utility Fast Charge Case and insert microSD cards as shown. The case can store up to three microSD cards at once.

Indicator Status

Utility Fast Charge Case Status	Indicator Status
Insert a battery/batteries or press the Battery Status Button when the Utility Fast Charge Case is not connected to a power source.	
With a battery/batteries inserted or when the Battery Status Button is pressed	Battery level 5:20%: Solid red for 3s, then off Battery level 20-80%: Solid yellow for 3s, then off Battery level 80%: Solid green for 3s, then off
No batteries inserted	Off

Charge a battery/batteries in the slots using the USB-C charging port or built-in USB-C cable.	
When connected to a power source	Slots without batteries: Solid white for 2s, then off
	Slots with batteries: Solid white for 2s, then charging status
Charging	<p>Battery level <80%: Flashes yellow until 80% charge or power is disconnected</p> <p>Battery level 80%: Flashes green until fully charged or power is disconnected</p>
Fully Charged	Solid green
Not connected to power source	Off

Charge external devices with the built-in USB-C cable.	
The battery not charging an external device	Off
The battery charging an external device	Battery level 20-80%: Solid yellow
	Battery level >80%: Solid green

When the battery charging an external device stops	Battery level <20%: Flashes red for 2s, then off
Malfunction	
Short-circuiting	Three quick red flashes, then off
Overheating	
Poor battery contact	

Notes

- The Utility Fast Charge Case is only for Insta360 XS batteries. Batteries from other models should not be inserted and charged using this case.
- Do not charge batteries near flammable and inflammable materials.
- When using an external power source (mains electricity or power bank), disconnect the Utility Fast Charge Case once the batteries are fully charged.
- Do not touch the Utility Fast Charge Case charging points.
- Keep the battery slots and the USB-C charging port free from water, dust, and other debris.
- Do not clean the Utility Fast Charge Case or the charging points with liquid products. Clean with a soft, dry cloth.
- Store the Utility Fast Charge Case in a dry and clean environment.

Disclaimer

Please read this Disclaimer carefully. Using this product means that you acknowledge and accept the terms of this disclaimer. By using this product you hereby acknowledge and agree that you are solely responsible for your own conduct when using this product and any consequences thereof. You agree to use this product only for proper and lawful purposes. You understand and agree that Arashi Vision Inc. (hereinafter referred to as

‘Insta360’) accepts no liability for any and all misuse, consequences, damages, injuries, penalties, or any other legal responsibility directly or indirectly incurred by your using this product and associated accessories. Before every use, make sure that your accessories are functioning properly. If there’s any damage or irregularity, stop using them immediately. Within the scope of state laws and regulations, Insta360 reserves the right of final explanation and revision for the commitment.

After-Sales Service

The warranty period of the attached product is 1 year from the original retail purchase. Warranty service may vary according to the applicable laws of your state or jurisdiction. For detailed warranty policies, please visit <https://Jinsta360.com/support>

Documents / Resources

<div><div>Insta360 X5</div><div>Utility Fast Charge Case</div><div>多功能充电管家</div></div> <div><div>Instructions for Use</div><div>使用说明</div></div> <div><div>EN CN JA DE PL</div></div>	<div><div>Insta360 X5 Utility Fast Charge Case [pdf] Instructions</div><div>X5 Utility Fast Charge Case, X5, Utility Fast Charge Case, Fast Charge Case, Charge Case</div></div>
---	--

References

- [User Manual](#)

Charge Case, Fast Charge Case, Insta360, Utility Fast Charge Case, X5, X5 Utility Fast Charge Case

Insta360 Case

Leave a comment

Your email address will not be published. Required fields are marked *

Comment *

Name

Email

Website

☐ Save my name, email, and website in this browser for the next time I comment.

Post Comment

Search:

e.g. whirlpool wrf535swhz

Search

[Manuals+](#) | [Upload](#) | [Deep Search](#) | [Privacy Policy](#) | [@manuals.plus](#) | [YouTube](#)

This website is an independent publication and is neither affiliated with nor endorsed by any of the trademark owners. The "Bluetooth®" word mark and logos are registered trademarks owned by Bluetooth SIG, Inc. The "Wi-Fi®" word mark and logos are registered trademarks owned by the Wi-Fi Alliance. Any use of these marks on this website does not imply any affiliation with or endorsement.