



Insta360 X3 Drive Case Instruction Manual

[Home](#) » [Insta360](#) » Insta360 X3 Drive Case Instruction Manual 

Contents

- [1 Insta360 X3 Drive Case Instruction Manual](#)
- [2 Specifications](#)
- [3 Before Using](#)
 - [3.1 Open the Case](#)
- [4 Attach the Anti-Fog Insert](#)
- [5 Insert the Camera](#)
- [6 Close the Case](#)
- [7 Note:](#)
 - [7.1 Attach the Stabilizer Ring](#)
 - [7.2 Maintenance](#)
 - [7.3 After-Sales Service](#)
 - [7.4 Disclaimer](#)
 - [7.5 Read More About This Manual & Download PDF:](#)
- [8 Documents / Resources](#)
 - [8.1 References](#)

Insta360 X3 Drive Case Instruction Manual



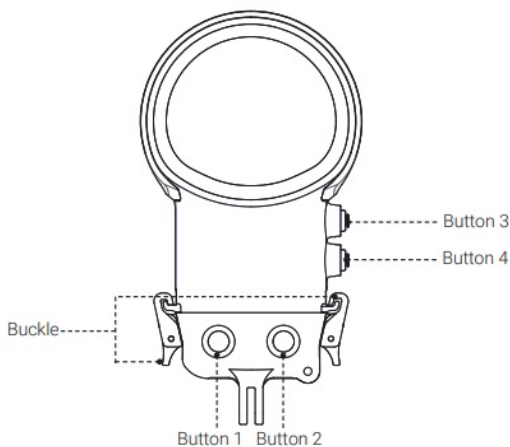
Specifications

Maximum Water Depth: 50m (164ft)

Included items: Insta360 X3 Dive Case, Anti-fog Inserts, 1/4" Mount Adapter, 1/4" Thumb Screw, Protective Pouch, Stabilizer Ring, Thumb Screw Wrench, Instructions & Warranty

Weight: 131g (4.6oz)

Names of Parts



Before Using

1. Please read this document carefully and prepare the case properly before use. Failure to observe these instructions may cause damage to the camera, battery, microSD card or other parts, for which Insta360 won't assume responsibility. Please use this product responsibly to prevent accidental damage.
2. Improper maintenance may affect product performance. Each time before placing the camera in the Dive Case, it's suggested to latch the Dive Case (no camera inserted) and immerse it in water to check for leaks as described below.
3. Latch the Dive Case and then slowly immerse it in water, stopping if air is expelled from inside the Dive Case.
4. Immerse the Dive Case and operate the buttons under water for 2-3 minutes, checking for any air bubbles.
5. Take the Dive Case out of the water and dry it thoroughly with a soft, dry cloth, then open the Dive Case and

check for water inside.

6. When sealing the Dive Case, be sure that the parts of the Dive Case in contact with its rubber seal are free of any foreign objects and the rubber seal has not moved off the rim of the Dive Case.
7. Never open or close the Dive Case in a location with a lot of sand, dirt, dust or other small particles. Otherwise, the performance of the Dive Case will be reduced and the camera may be damaged.

To ensure the Dive Case is securely sealed, ensure the rubber seal is not protruding from the Case, and no foreign matter is stuck in the Dive Case once closed.

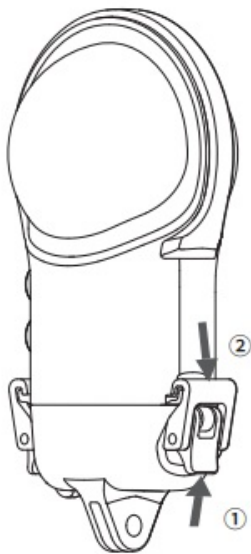
The Dive Case is not shock-resistant. Applying strong vibrations, shocks or pressure to the product may result in damage, failure or reduced waterproofing performance. While using Insta360 X3 in the Dive Case, the maximum height from which you can dive into water is 2 meters (6.56ft). The Dive Case is protected against drops onto solid ground from a maximum height of 1 meter (3.28ft).

Glue may be visible inside the outer edge of the Dive Case lenses. This is normal and will not affect waterproofing performance.

How to Use

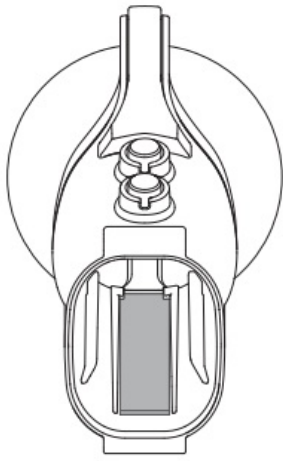
Open the Case

Lift the buckle as shown below (①), then pull it down to remove from the hook (②). Repeat with the other buckle. When both sides are disengaged, open the Dive Case.



Attach the Anti-Fog Insert

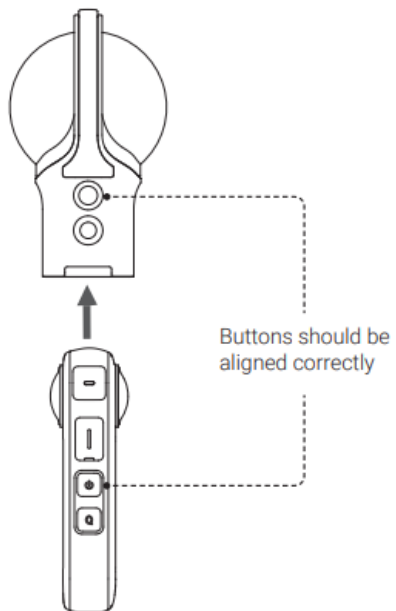
Ensure that anti-fog insert is inserted as shown below.



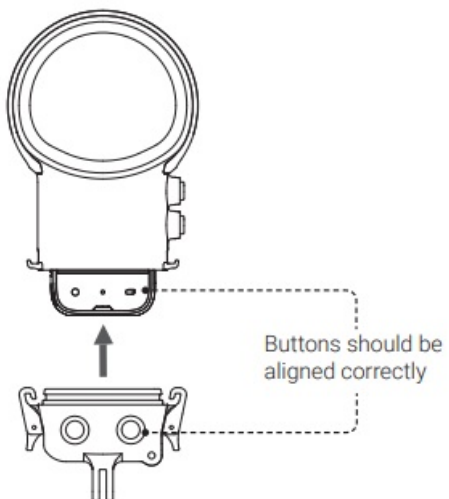
Insert the Camera

Install the Dive Case's upper cover

..



Install the Dive Case's lower cover



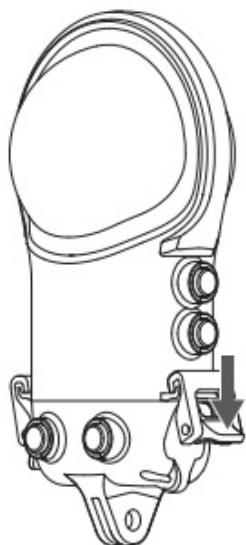
Note:

When using the camera in water, please lock the touch screen to avoid accidental commands. Press Button 3 (Power Button) on the side to switch shooting modes.

When inserting the camera, take care not to scratch the lens.

Close the Case

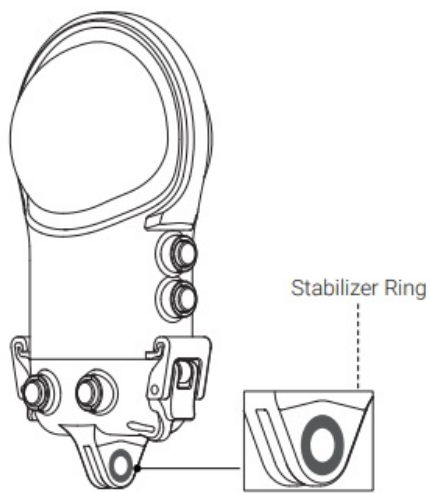
To close the Dive Case, latch the buckle onto the case's hook and firmly push down until it clicks.

**Note:**

- Ensure the Dive Case is firmly Be sure that the parts of the Dive Case in contact with its rubber seal are free of dirt or dust.
- For the best results, keep the lenses of the Dive Case

Attach the Stabilizer Ring

When connecting the Dive Case to other accessories, such as the floating hand grip, be sure to stick a stabilizer ring to the screw points.



Stitch

After shooting with the Dive Case, open the Insta360 X3 files in the Insta360 App or Insta360 Studio. The files will be automatically selected as Stitch for Dive Case.

Maintenance

1. Do not open the Dive Case while it is wet.
2. After using the product in seawater, take out ONE X3, and soak the Dive Case in fresh water for at least 60 minutes. If the Dive Case is not rinsed after use in seawater, residual salt may crystalize in gaps. These salt crystals will not dissolve in water and can lift up the rubber seal and cause water leakage. After soaking the Dive Case in fresh water, rinse it under gently flowing tap water. Never apply a strong water stream from a single direction, as it may cause water leakage.
3. Ensure that the Dive Case is firmly closed before washing. After washing the Dive Case, wipe away any water droplets remaining on the surface with a soft, dry cloth. Do not dry it with a hair dryer, clothes dryer or stove.
4. Ensure there is no sand on the Dive Case before drying. Sand may scratch the product surface when wiped with a cloth.
5. Do not store the Dive Case in a hot and humid environment. In particular, do not

leave it inside a hot car.

Do not wash the Dive Case with soap, neutral detergent or alcohol cleaning products. This may degrade the waterproofing performance.

Store the product in a dry, well-ventilated location.

After-Sales Service

The warranty period of the attached product is 1 year from the original retail purchase. Warranty service may vary according to the applicable laws of your state or jurisdiction. For detailed warranty policies, please visit

<http://insta360.com/support>.

Disclaimer

Please read this Disclaimer carefully. Using this product means that you acknowledge and accept the terms of this disclaimer.


By using this product, you hereby acknowledge and agree that you are solely responsible for your own conduct when using this product and any consequences thereof. You agree to use this product only for proper and lawful purposes. You understand and agree that Arashi Vision Inc. (hereinafter referred to as 'Insta360') accepts no liability for any and all misuse, consequences, damages, injuries, penalties, or any other legal responsibility directly or indirectly incurred by your using this product. Before every use, make sure that your product is functioning properly. If there's any damage or irregularity, stop using it immediately.

Within the scope of state laws and regulations, Insta360 reserves the right of final explanation and revision for the commitment.

Within the scope of national laws and regulations, Arashi Vision Inc. ("Insta360") reserves the right of final interpretation for the instructions and other files, which are subject to change without prior notice.

Read More About This Manual & Download PDF:

Documents / Resources

	<p>Insta360 X3 Drive Case [pdf] Instruction Manual</p> <p>CINSBAQC, Insta360 X3, X3 Drive Case, X3, Case, X3 Case, Drive Case</p>
--	---

References

- [🔗 Insta360 - Support](#)
- [🔗 Insta360 | Action Cameras | 360 Cameras | VR Cameras](#)
- [🔗 Insta360 - Support](#)