



# Insta360 ONE X2 Waterproof 360 Action Camera User Guide

[Home](#) » [Insta360](#) » Insta360 ONE X2 Waterproof 360 Action Camera User Guide 

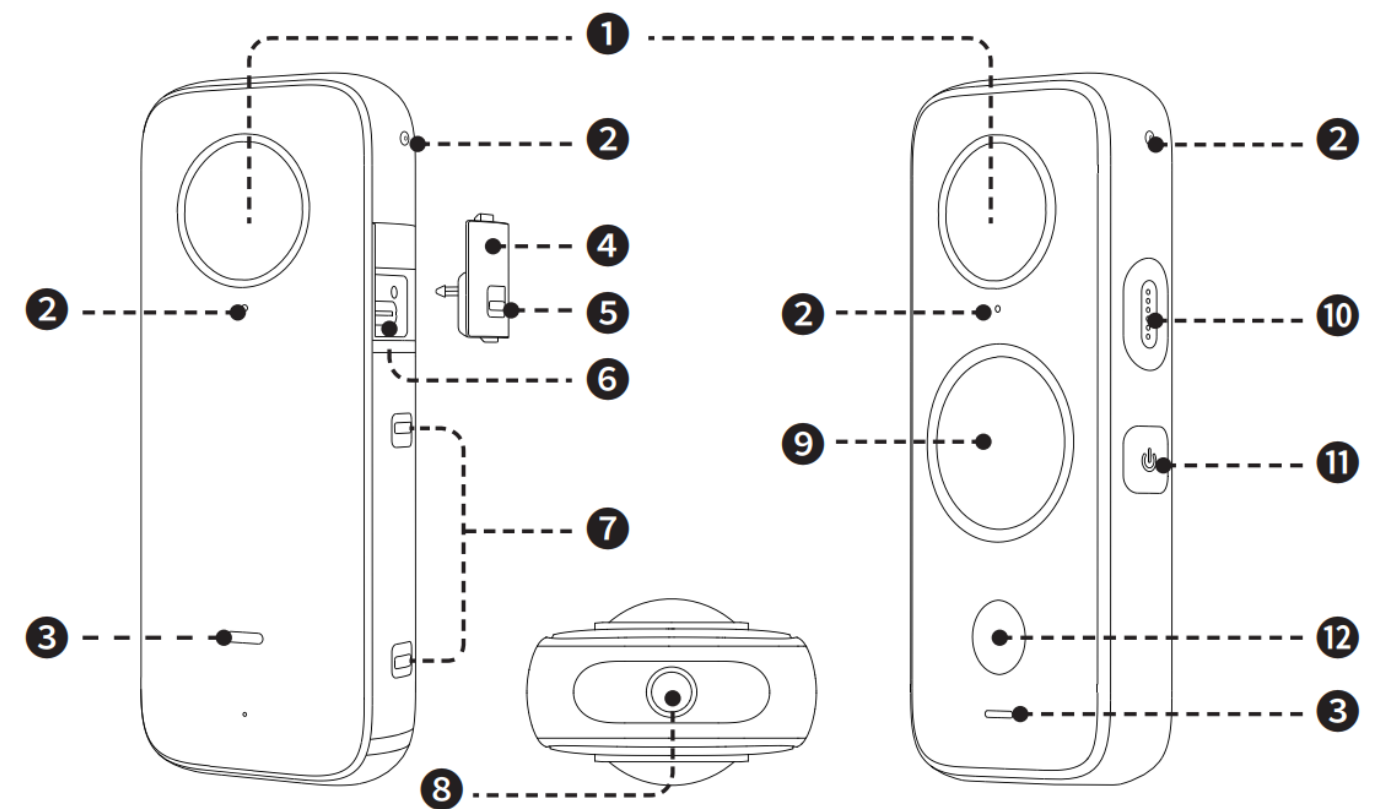
## Insta360 ONE X2 Waterproof 360 Action Camera User Guide



### Contents

- [1 Names of Parts](#)
- [2 Before You Start](#)
- [3 Know Your Insta360 ONE X2](#)
- [4 Control via WiFi](#)
- [5 Documents / Resources](#)
  - [5.1 References](#)
- [6 Related Posts](#)

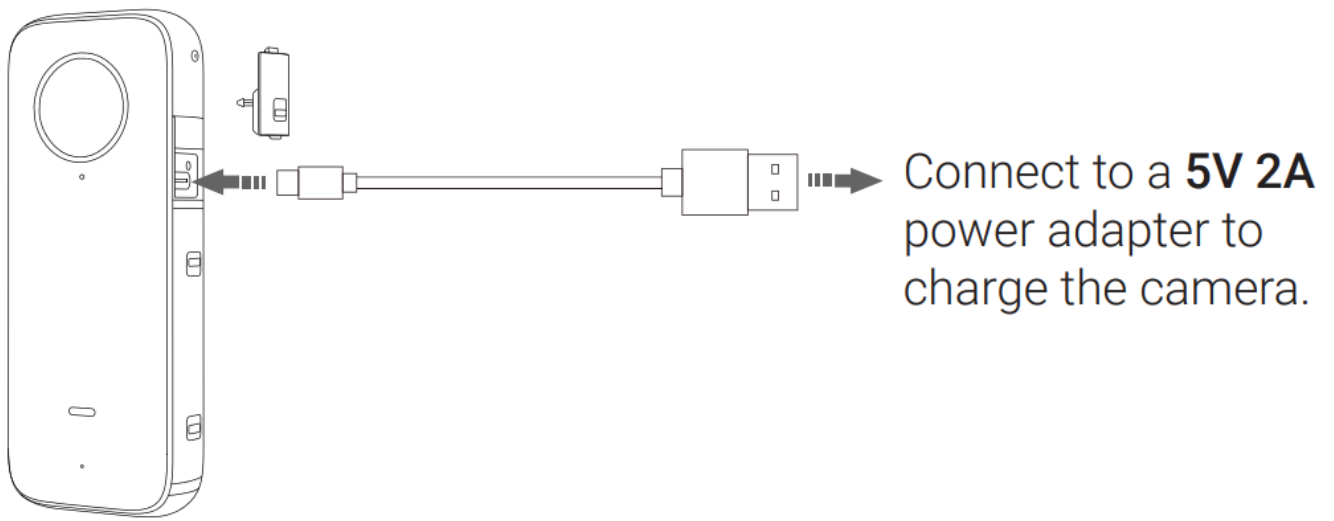
### Names of Parts



1. Lens
2. Microphone
3. Status Indicator
4. USB Lock Cover (removable)
5. USB Lock Buckle
6. USB Type C Port
7. Battery Lock Buckles
8. Standard 1/4" Mounting Point
9. Touch Screen
10. Speaker
11. Power / Function Button
12. Shutter Button

## Before You Start

1. Ensure the battery has been fully charged. Please connect the included charge cable to ONE X2 in case of low or depleted battery.

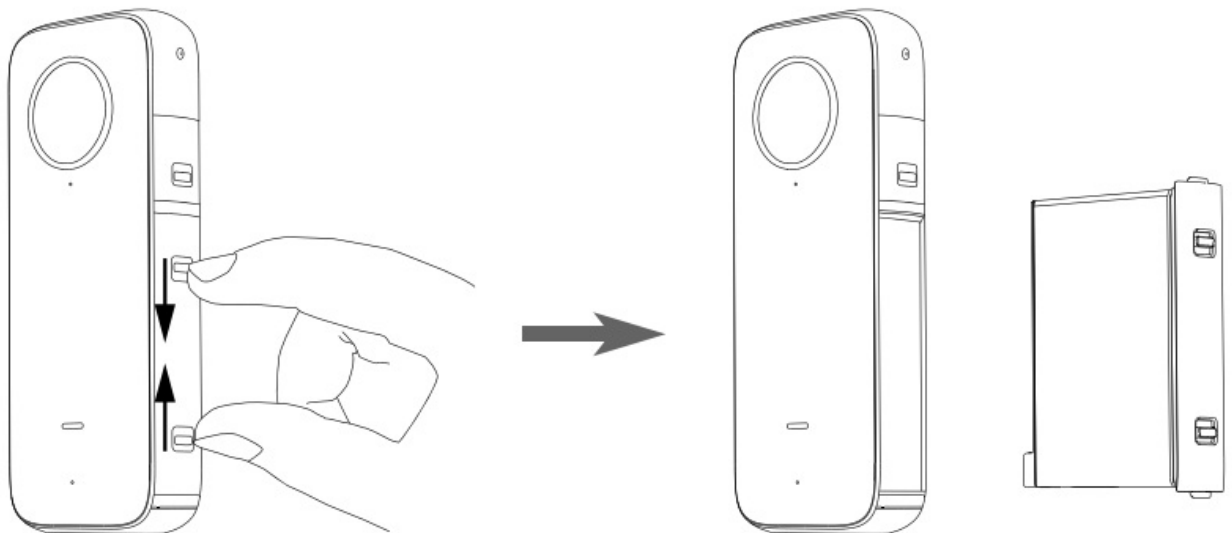


**Note:**

You can also use the official Insta360 ONE X2 Fast Charge Hub (sold separately).

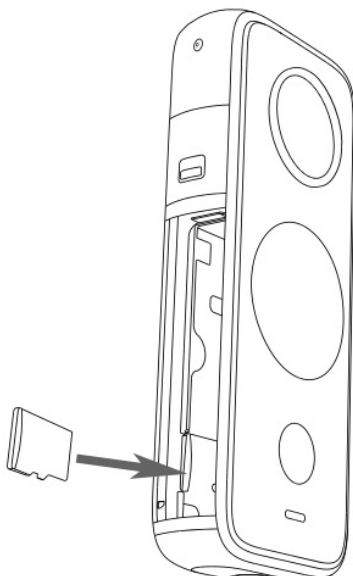
**2. Insert a Micro SD card**

1. First, remove the battery. Squeeze the battery lock buckles as the two small arrows indicate, then the battery will pop out automatically.



**2. Insert a Micro SD card**

(With its label facing outward towards the touch screen)

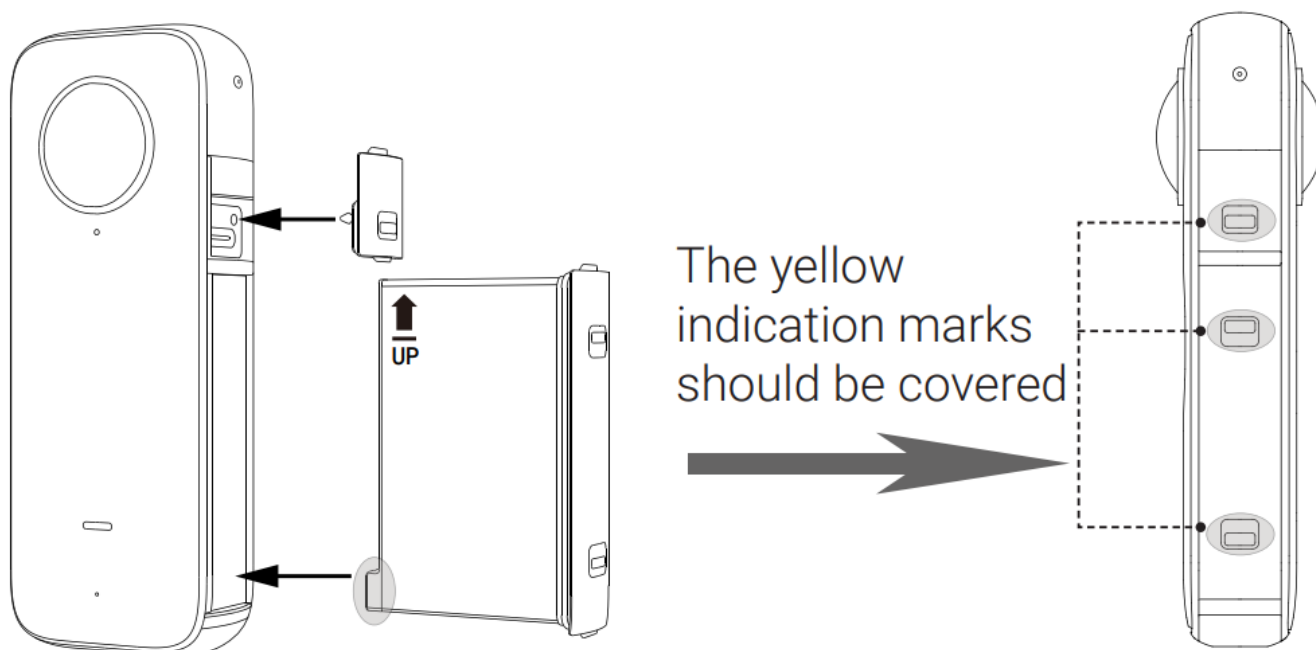


### Supported Micro SD cards:

Please use exFAT Format MicroSD cards of speed classes UHS-I and V30 to ensure normal recording.

The maximum supported storage space is 1TB.

3. Be sure to close the battery lock cover and USB lock cover completely (The yellow indication marks should be covered) to ensure waterproofing is not affected.



## Know Your Insta360 ONE X2

### • Power on / off

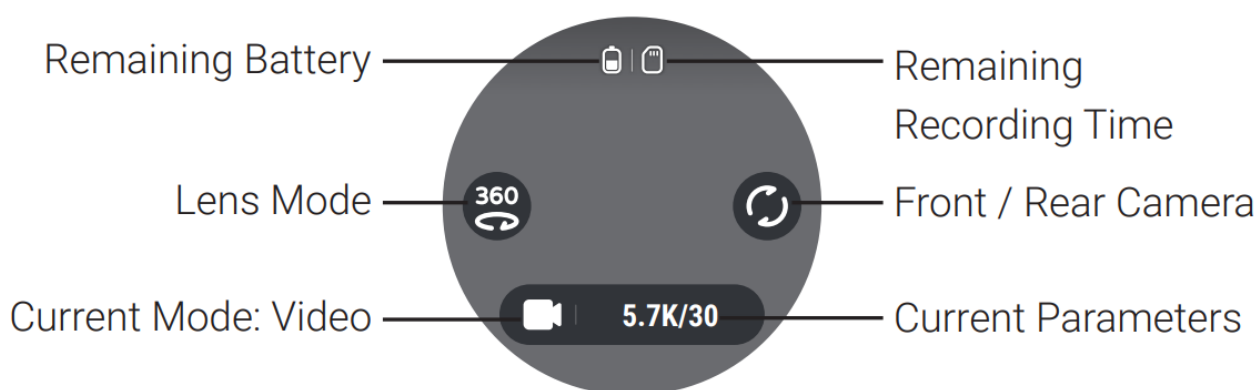
When the camera is turned off, press the Power / Function button to power it on.

In standby mode, press the Power / Function button to turn the touchscreen light off / on.

In standby mode, long press the Power / Function button for 2 seconds to power it off.

### • Using the Touch Screen

- The first time you turn on the camera, the following will be displayed on the screen.

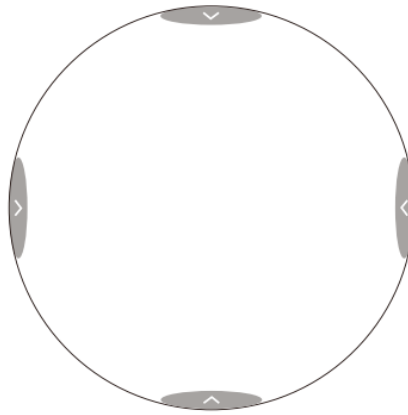


**Important:** When using ONE X2 in water, please lock the touch screen to avoid accidental presses. After locking the touch screen, you can use the Power / Function Button to change modes.

- **Basic operations for the touch screen:**

Swipe down to access System modes

Swipe right to access  
Media Gallery




Swipe left to adjust  
camera settings

Swipe up to open the Shortcut menu

### Control via WiFi

1. Scan the QR code on the right ( <https://www.insta360.com/download/insta360-onex2>) or search “Insta360 ONE X2” in the App Store / Google Play to download the companion app. The first time you use it, please follow onscreen instructions to activate the app.



2. Turn on the WiFi and Bluetooth of your mobile device.
3. When the camera is turned off, press the Power / Function button to power it on.
4. After installing the app, tap the camera icon  at the bottom of the app homepage and select “Connect now” in the WiFi panel.

Then, follow the onscreen instructions to connect your device.

The first time you connect to the camera via WiFi, follow onscreen instructions to confirm your connection.

After successfully connecting the camera, you can take photos or shoot videos via the app.

**Note:**

The WiFi connection range is 10 meters (33 ft) in optimal conditions with no interference.



\* For more product information, visit <https://www.insta360.com/support/product-support>

#### Arashi Vision Inc.


**Add:** Foresea Life Center, Tower 2, 11F, 1100 Xingye Road, Haiwang Community, Xin'an Street, Bao'an District, Shenzhen, China

**Web:** [www.insta360.com](http://www.insta360.com)

**Tel:** [400-833-4360](tel:400-833-4360) +1 800 6920 360

**Email:** [service@insta360.com](mailto:service@insta360.com)

## Documents / Resources

 <p>Insta360 ONE X2 QUICKSTART GUIDE 快速入门指南</p> <p><small>Copyright © 2017 Insta360. All rights reserved. Printed in Hong Kong. 100% Recycled Paper.</small></p>	<p><a href="#">Insta360 ONE X2 Waterproof 360 Action Camera</a> [pdf] User Guide ONE X2 360 Camera, Waterproof 360 Action Camera</p>
--	--

## References

- [User Manual](#)

#### [Manuals+](#), [Privacy Policy](#)

This website is an independent publication and is neither affiliated with nor endorsed by any of the trademark owners. The "Bluetooth®" word mark and logos are registered trademarks owned by Bluetooth SIG, Inc. The "Wi-Fi®" word mark and logos are registered trademarks owned by the Wi-Fi Alliance. Any use of these marks on this website does not imply any affiliation with or endorsement.