



Insta360 GPS Smart Remote Controller Instruction Manual

[Home](#) » [Insta360](#) » Insta360 GPS Smart Remote Controller Instruction Manual 

Contents

- 1 Insta360 GPS Smart Remote Controller
- 2 Product Information
- 3 Product Usage Instruction
 - 3.1 Product Specifications
- 4 Overview
- 5 Assembly Ways
- 6 How to Use
- 7 Charging
- 8 Specifications
- 9 Disclaimer
- 10 After-Sales Service
 - 10.1 FCC STATEMENT
 - 10.2 IC STATEMENT
- 11 Documents / Resources
 - 11.1 References
- 12 Related Posts



Insta360 GPS Smart Remote Controller



Product Information

The GPS Smart Remote Controller GPS is a remote control device that can be used with Insta360 ONE X2, ONE X3, ONE R, and ONE RS cameras. It has a built-in GPS module that allows you to track your camera's location and view it on a map. The controller also has a status screen, a shutter button, a function button, a turntable, and a power button. It can be assembled to a selfie stick or around the wrist using the provided straps.

The controller can be charged using the attached Type-C cable and a 5V/2A power adapter. It has a battery capacity of 485mAh and can be used in temperatures ranging from -10°C to 50°C.

Product Usage Instruction

Assembly:

Assemble into a selfie stick:

1. Slide the selfie stick belt through the upper slot of the turntable until it is completely stuck.
2. Wrap the tape around the selfie stick and secure it to the stick.

Assemble around the wrist:

3. Pass the wrist strap through the upper slot of the turntable.
4. Place the strap on your wrist and tighten it around your wrist.

Charging:

1. Remove the Type-C interface cover at the bottom of the remote control.

2. Connect the provided charging cable to the Type-C port to charge the camera.
3. Use a 5V/2A power adapter to charge the camera.

Important Note:

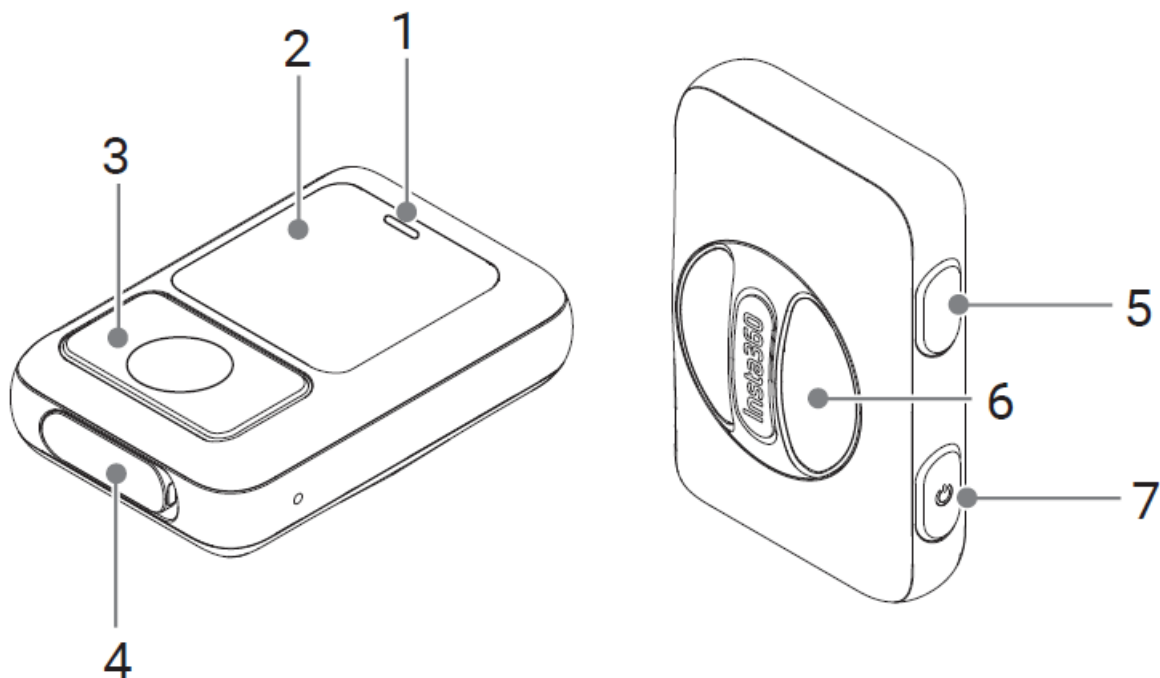
If you notice any damage or irregularity, stop using the controller immediately. Within the scope of state laws and regulations, Insta360 reserves the right of final explanation and revision for the commitment.

Product Specifications

- **Compatibility:** Insta360 ONE X2, ONE X3, ONE R, ONE RS
- **Power Source:** 485mAh battery
- **Charging Voltage:** 5V/2A
- **Operating Temperature:** -10oC to 50oC
- **Storage Temperature:** -20oC to 60oC

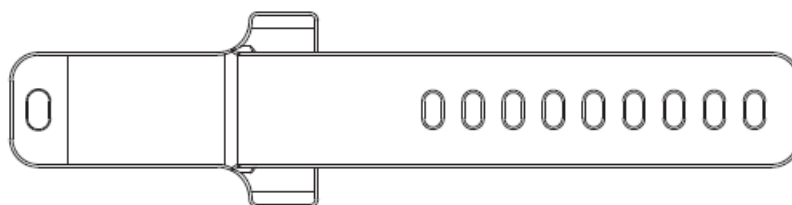
After-Sales Service:

The warranty period of the attached product is 1 year from the original retail purchase. Warranty service may vary according to the applicable laws of your state or jurisdiction. For detailed warranty policies, please visit <http://insta360.com/support>.

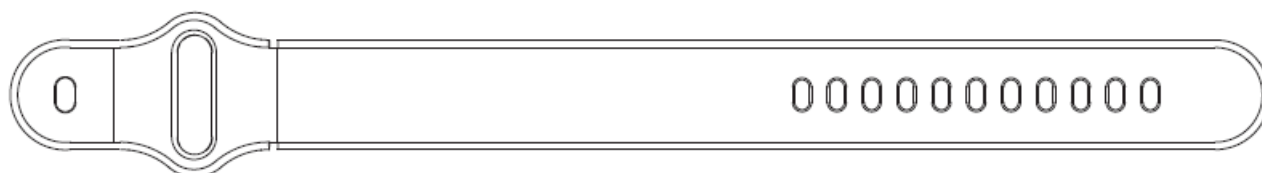
Overview

1. Status Indicator
2. Status Screen
3. Shutter Button
4. Type-C Port Cover
5. Function Button
6. Turntable

7. Power Button



Selfie Stick Strap

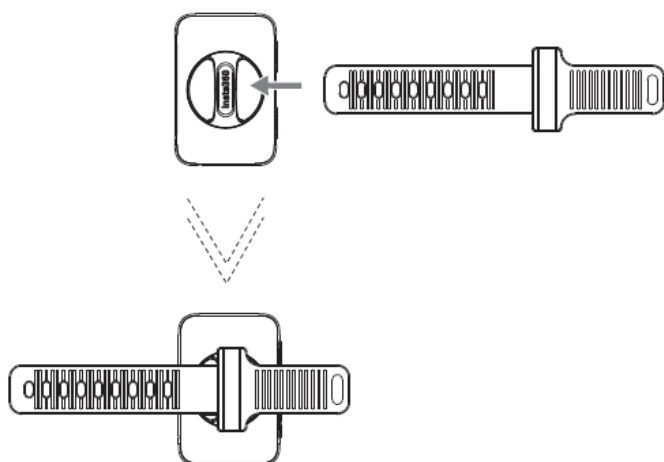


Wrist Strap

Assembly Ways

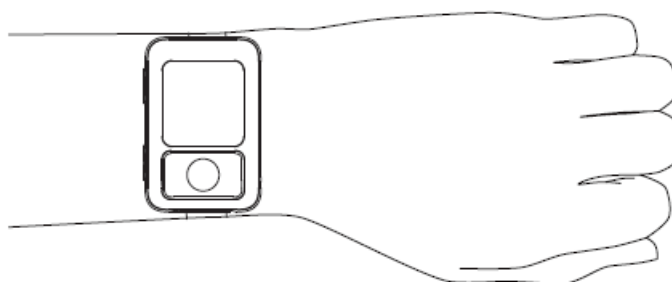
1. Assemble into a selfie stick

Slide the selfie stick belt through the upper slot of the turntable until it is completely stuck. Wrap the tape around the selfie stick and secure it to the stick.



2. Assemble around the wrist

As shown, pass the wrist strap through the upper slot of the turntable. Place the strap on your wrist and tighten it around your wrist.



How to Use

Note:

GPS Smart Remote Controller is compatible with many Insta360 action cameras (such as ONE X2, ONE X3, ONE R, ONE RS).

Pair the remote controller with your camera

1. Press the power button on the camera to turn it on.
2. Press the power button on the remote controller to turn it on.
3. Press the Shutter Button and Function Button on the remote controller at the same time until it beeps, the remote controller has begun pairing.
4. Open the app and connect it to your camera via WiFi. Then tap Settings > Shoot with Bluetooth remote > Scan Bluetooth remote > Insta360 Remote Next and follow onscreen instructions to connect the remote to the camera. When the camera's screen displays Connected, it indicates a successful connection.

Important:

- Be sure that your camera's firmware and App version have been updated to the latest official versions.
- After connecting for the first time, your remote can connect to the camera automatically within its effective range without repeating steps in the app. If afterwards you wish to connect your remote to another camera, you need to press the two buttons on the remote simultaneously to unbind the previous connection, and then connect the remote and camera in the App.
- The remote can be used up to 10 meters away in optimal conditions.
- Once the remote and the camera are connected, the remote's button will have the same functions as on the camera. For the detailed button's functions, please refer to the related camera's Quickstart Guide.

Take a photo

Press the Shutter Button to take photos.

Shoot a video

Select the recording mode on the camera, click the shutter button on the remote control to start recording, and click the shutter button again to stop recording.

Turn off

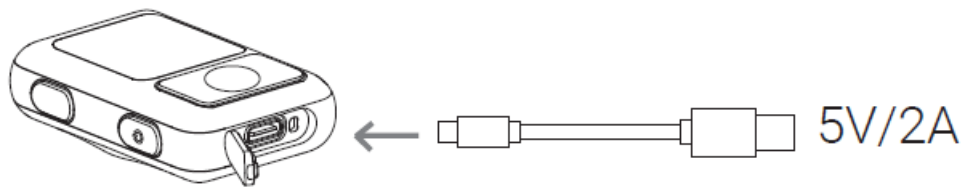
Press and hold the Power Button to turn off both the camera and the remote.

GPS Feature

To find a strong GPS signal, please place the remote in a spacious outdoor setting, and be sure to hold or mount the remote with the top facing upward. It can take up to a minute to establish a signal (with no interface or obstructions).

Charging

1. Remove the type-c interface cover at the bottom of the remote control.
2. Please use the attached charging cable to connect the Type-c port to charge the camera.



Note: Please use the 5V/2A power adapter to charge the camera.

Note:

- The GPS Smart Remote Controller contains sensitive components. Do not drop, disassemble, crush, microwave, or insert foreign objects into the product.
- Avoid dramatic changes in temperature or humidity when using the remote as condensation may form on or within the product.

Specifications

- **Connection:** Bluetooth5.0
- **Effective Range:** 10 meters (32.8 ft)
- **Battery:** 485mAh
- **Work environment:** -10°C ~ 50°C
- **Charging environment:** -20°C ~ 60°C

Disclaimer

Please read this Disclaimer carefully. Using this product means that you acknowledge and accept the terms of this disclaimer.

By using this product, you hereby acknowledge and agree that you are solely responsible for your own conduct when using this product and any consequences thereof. You agree to use this product only for proper and lawful purposes. You understand and agree that Arashi Vision Inc. (hereinafter referred to as 'Insta360') accepts no liability for any and all misuse, consequences, damages, injuries, penalties, or any other legal responsibility directly or indirectly incurred by your using this product.

Before every use, make sure that your product is functioning properly. If there's any damage or irregularity, stop using it immediately. Within the scope of state laws and regulations, Insta360 reserves the right of final explanation and revision for the commitment.

After-Sales Service

The warranty period of the attached product is 1 year from the original retail purchase. Warranty service may vary according to the applicable laws of your state or jurisdiction. For detailed warranty policies, please visit <http://insta360.com/support>.

FCC STATEMENT

This device complies with part 15 of the FCC Rules. Operation is subject to the following two conditions:

1. This device may not cause harmful interference, and

2. This device must accept any interference received, including interference that may cause undesired operation.

NOTE:

This equipment has been tested and found to comply with the limits for a Class B digital device, pursuant to part 15 of the FCC Rules. These limits are designed to provide reasonable protection against harmful interference in a residential installation. This equipment generates, uses, and can radiate radio frequency energy and, if not installed and used in accordance with the instructions, may cause harmful interference to radio communications. However, there is no guarantee that interference will not occur in a particular installation. If this equipment does cause harmful interference to radio or television reception, which can be determined by turning the equipment off and on, the user is encouraged to try to correct the interference by one or more of the following measures:

- Reorient or relocate the receiving antenna.
- Increase the separation between the equipment and the receiver.
- Connect the equipment to an outlet on a circuit different from that to which the receiver is connected.
- Consult the dealer or an experienced radio/TV technician for help.

Warning:

Changes or modifications not expressly approved by the party responsible for compliance could void the user's authority to operate the equipment.

IC STATEMENT

This device contains license-exempt transmitter(s)/receiver(s) that comply with Innovation, Science, and Economic Development Canada's license-exempt RSS(s). Operation is subject to the following two conditions:

1. This device may not cause interference.
2. This device must accept any interference, including interference that may cause undesired operation of the device


Arashi Vision Inc.

- **ADD:** Foresea Life Center, Tower 2, 11F, 1100 Xingye Road, Haiwang Community, Xin'an Street, Baoan District, Shenzhen, China
- **WEB:** www.insta360.com
- **TEL:** 400-833-4360 +1 800 6920 360
- **EMAIL:** service@insta360.com.

Insta360 GmbH

Ernst-Augustin-Str. 1a, 12489 Berlin, Germany.
+49 177 856 7813
cash.de@insta360.com.

Documents / Resources

 GPS Smart Remote Controller GPS 智能遥控器 Instructions for Use / 使用说明 <small>INSTA360 2020.11.11</small>	Insta360 GPS Smart Remote Controller [pdf] Instruction Manual ONE X2, ONE X3, ONE R, ONE RS, GPS Smart Remote Controller, Smart Remote Controller, Remote Controller, Controller
--	---

References

-  [Insta360 - Support](#)
-  [Insta360 | Action Cameras | 360 Cameras | VR Cameras](#)