



# Insta360 GPS Action Remote User Manual

[Home](#) » [Insta360](#) » Insta360 GPS Action Remote User Manual 

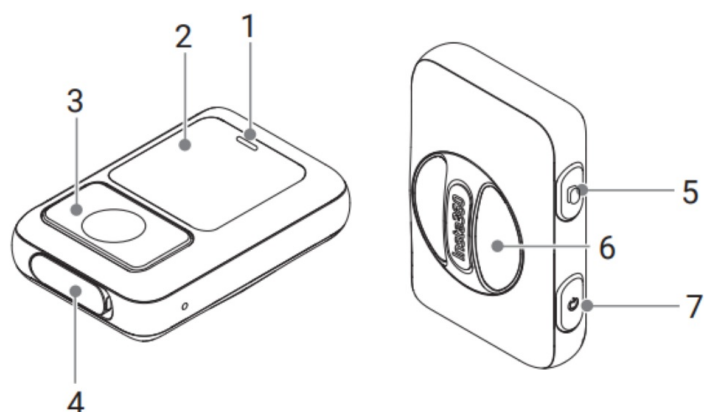
## Contents

- [1 Insta360 GPS Action Remote User Manual](#)
- [2 Overview](#)
- [3 Installation](#)
- [4 Pairing and Connecting](#)
- [5 How to Use](#)
  - [5.1 Turn off](#)
  - [5.2 Language](#)
- [6 GPS Feature](#)
  - [6.1 Reset](#)
  - [6.2 Charging](#)
- [7 Specifications](#)
  - [7.1 Warranty Conditions](#)
  - [7.2 EU Declaration of Conformity](#)
  - [7.3 WEEE](#)
  - [7.4 Documents / Resources](#)
    - [7.4.1 References](#)
  - [7.5 Related Posts](#)

# Insta360 GPS Action Remote User Manual



## Overview



1. Status Indicator
2. Status Screen
3. Shutter Button
4. Type-C Port
5. Mode Button
6. Turntable
7. Power Button

## Selfie Stick Strap



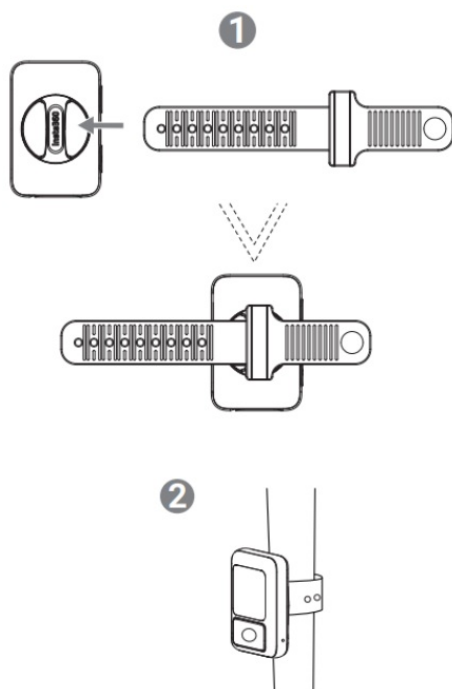
## Wrist Strap



## Installation

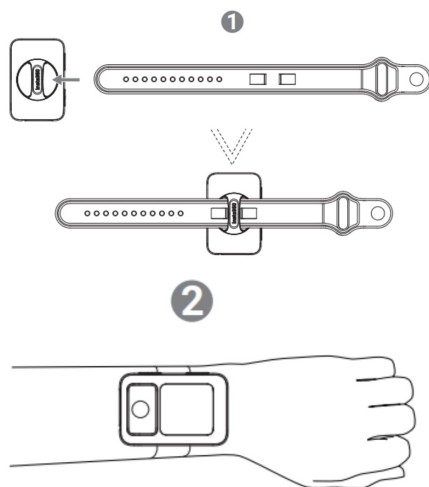
### Installed to a selfie stick

Thread the selfie stick belt through the slot of the turntable until it sticks to the groove. Install the strap to the selfie stick.



### Installed to a wrist

Pass the wrist strap through the slot of the turntable until it sticks to the groove. Install the strap on your wrist.



### Pairing and Connecting

**To pair and connect the GPS Action Remote with your camera:**

1. Press the power button on the camera to turn it on.
2. Click Settings > Bluetooth Remote on the camera.
3. Press the power button on the GPS Action Remote to turn it on.
4. Press the Shutter Button to choose Pair New on the GPS Action Remote to start searching. Press it again to choose a desired camera and begin pairing. When the GPS Action Remote's screen displays Connected, pairing is successful.

**Important:**

- Be sure that your camera's firmware has been updated to the latest official version.
- The remote can be used up to 65.6ft (20m) in optimal conditions.
- The GPS Action Remote is compatible with Insta360 action cameras including but not limited to Insta360 X2, X3 and ONE RS.
- The GPS Action Remote can control up to 4 cameras at a time. The camera recognizes only one remote at a time.
- After connecting for the first time, your remote can control to the camera automatically within its effective range without repeating the pairing steps.
- Once the remote and the camera are connected, the remote's button will have the same functions as on the camera. For the detailed button's functions, please refer to the related camera's QuickStart Guide.

## How to Use

### To take photos or videos:

1. Press the Mode Button on the GPS Action Remote to display the mode screen.
2. Repeatedly Press the Mode Button to choose a desired mode.
3. Press the Shutter Button on the GPS Action Remote to take a photo or start recording and click the shutter button again to stop recording.

**Note:** When connected with several cameras, pressing the Mode Button, it will change between Photo, Video and Time Shift mode.

### Turn off

To turn off the GPS Action Remote, press and hold the Power Button for 6 seconds.

### Language

To change the language on the Status Screen, press the Shutter Button to choose Language. Then press it to choose the desired language.

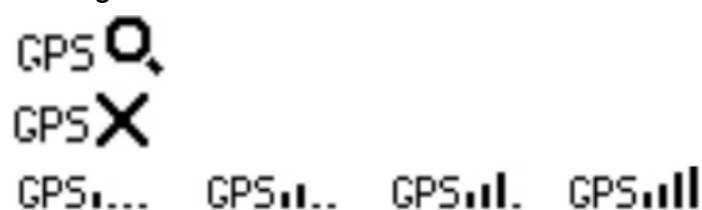
## GPS Feature

When the GPS Action Remote is on, it will automatically search for GPS signals.

### Searching for GPS signal

#### No GPS signals

#### GPS signals



### Tips:

- To find a strong GPS signal, please place the remote in a spacious outdoor setting.

- Be sure to hold or mount the remote with the top facing upward.
- It can take up to a minute to establish a signal (with no interface or obstructions).

## Reset

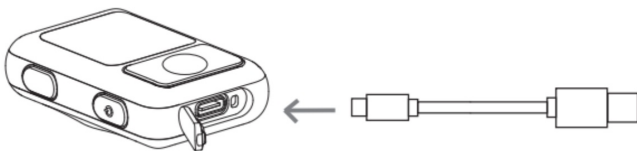
To reset the GPS Action Remote, press the Shutter Button to choose Reset > Yes.

## Note:

- The GPS Action Remote contains sensitive components. Do not drop, disassemble, crush, microwave, or insert foreign object into the product.
- Avoid dramatic changes in temperature or humidity when using the remote as condensation may form on or within the product.
- Do not cover the top of the GPS Action Remote with hands or other objects when using it.

## Charging

1. Open the Type-C port cover at the bottom of the GPS Action Remote.
2. Use the attached charging cable to connect the Type-C port to charge the GPS Action Remote.



**Note:** Please use a 5V/1A power adapter to charge the GPS Action Remote.

---

## Specifications

- **Connection:** Bluetooth 5.0
- **Effective Range:** 65.6 ft (20m)
- **Battery:** 485mAh
- **Work environment:** -20°C ~ 40°C (-4°F to 104°F)
- **Charging environment:** -20°C ~ 45°C (-4°F to 113°F)
- **Waterproof:** IPX8 (up to 16ft)

## Warranty Conditions

A new product purchased in the Alza.cz sales network is guaranteed for 2 years. If you need repair or other services during the warranty period, contact the product seller directly, you must provide the original proof of purchase with the date of purchase.

**The following are considered to be a conflict with the warranty conditions, for which the claimed claim may not be recognized:**

- Using the product for any purpose other than that for which the product is intended or failing to follow the instructions for maintenance, operation, and service of the product.

- Damage to the product by a natural disaster, the intervention of an unauthorized person or mechanically through the fault of the buyer (e.g., during transport, cleaning by inappropriate means, etc.).
- Natural wear and aging of consumables or components during use (such as batteries, etc.).
- Exposure to adverse external influences, such as sunlight and other radiation or electromagnetic fields, fluid intrusion, object intrusion, mains overvoltage, electrostatic discharge voltage (including lightning), faulty supply or input voltage and inappropriate polarity of this voltage, chemical processes such as used power supplies, etc.
- If anyone has made modifications, modifications, alterations to the design or adaptation to change or extend the functions of the product compared to the purchased design or use of non-original component.

## EU Declaration of Conformity

### Identification data of the manufacturer's / importer's authorized representative:

**Importer:** Alza.cz a.s.

**Registered office:** Jankovcova 1522/53, Holešovice, 170 00 Prague 7

**CIN:** 27082440

### Subject of the declaration:

**Title:** Remote Control

**Model / Type:** Insta360 GPS Action Remote

### The above product has been tested in accordance with the standard(s) used to demonstrate compliance with the essential requirements laid down in the Directive(s):

Directive No. 2014/53/EU

Directive No. 2011/65/EU as amended 2015/863/EU



## WEEE

This product must not be disposed of as normal household waste in accordance with the EU Directive on Waste Electrical and Electronic Equipment (WEEE – 2012/19 / EU). Instead, it shall be returned to the place of purchase or handed over to a public collection point for the recyclable waste. By ensuring this product is disposed of correctly, you will help prevent potential negative consequences for the environment and human health, which could otherwise be caused by inappropriate waste handling of this product. Contact your local authority or the nearest collection point for further details. Improper disposal of this type of waste may result in fines in accordance with national regulations.



### Dear customer,

Dear customer,

Thank you for purchasing our product. Please read the following instructions carefully before first use and keep this user manual for future reference. Pay particular attention to the safety instructions. If you have any questions or comments about the device, please contact the customer line.


<http://www.alza.co.uk/kontakt>

+44 (0)203 514 4411







Importer Alza.cz a.s., Jankovcova 1522/53, Holešovice, 170 00 Prague 7,

[www.alza.cz](http://www.alza.cz)

## Documents / Resources

|   |   |
|---|---|
| <br><br>GPS Action Remote<br><br><small>User Manual - Uživatelský manuál -<br/>Wiedź użytkowa - Benutzeranweisung -<br/>Käyttöohjeet</small> | <p><a href="#">Insta360 GPS Action Remote</a> [pdf] User Manual<br/>GPS Action Remote, GPS Remote, Action Remote, Remote, GPS</p> |
|---|---|

## References

-  [Alza.sk – rýchly a pohodlný nákup odkiaľkoľvek | alza.sk](#)
-  [alza.at](#)
-  [Alza | Alza.co.uk](#)
-  [alza.de](#)
-  [alza.hu](#)
-  [alza.sk](#)

Manuals+.