

Insta360 CINSAAJA Ace Pro Action Camera



Insta360 CINSAAJA Ace Pro Action Camera User Guide

[Home](#) » [Insta360](#) » Insta360 CINSAAJA Ace Pro Action Camera User Guide 

Contents

- [1 Insta360 CINSAAJA Ace Pro Action Camera](#)
- [2 Product Usage Instructions](#)
- [3 FAQ](#)
- [4 Installation Instructions](#)
- [5 Specifications](#)
- [6 FCC Statement](#)
- [7 CONTACT](#)
- [8 Documents / Resources](#)
 - [8.1 References](#)



Insta360 CINSAAJA Ace Pro Action Camera



Product Usage Instructions

Charging the Insta360 Ace Pro

- To charge the device, use a power adapter that supports an input of 5-9V and a minimum output of 3A.
- Connect the charging cable to the device's charging port and the power adapter to a power source.

Connecting via Bluetooth

- To connect the Insta360 Ace Pro via Bluetooth, ensure that the device is powered on and in pairing mode.
- Access the Bluetooth settings on your smartphone or other compatible device, search for the Insta360 Ace Pro, and pair with it using the provided passkey if required.

Using WiFi Features

- The Insta360 Ace Pro supports WiFi connectivity on multiple frequencies.
- To access WiFi features, navigate to the device's settings menu, select the desired WiFi network, and enter the password if prompted.

Operating Temperature Guidelines

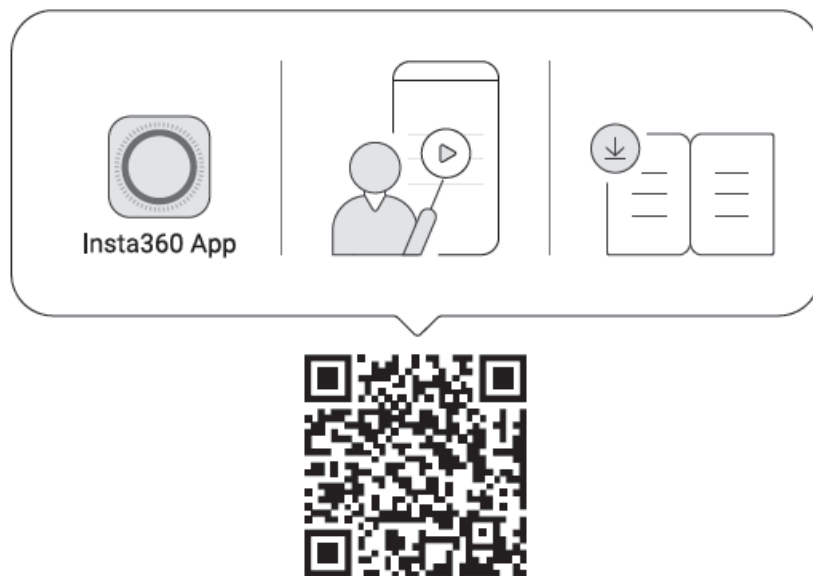
- Ensure that the device is used within the recommended temperature range of -20°C to 40°C to prevent any damage or malfunctions.

FAQ

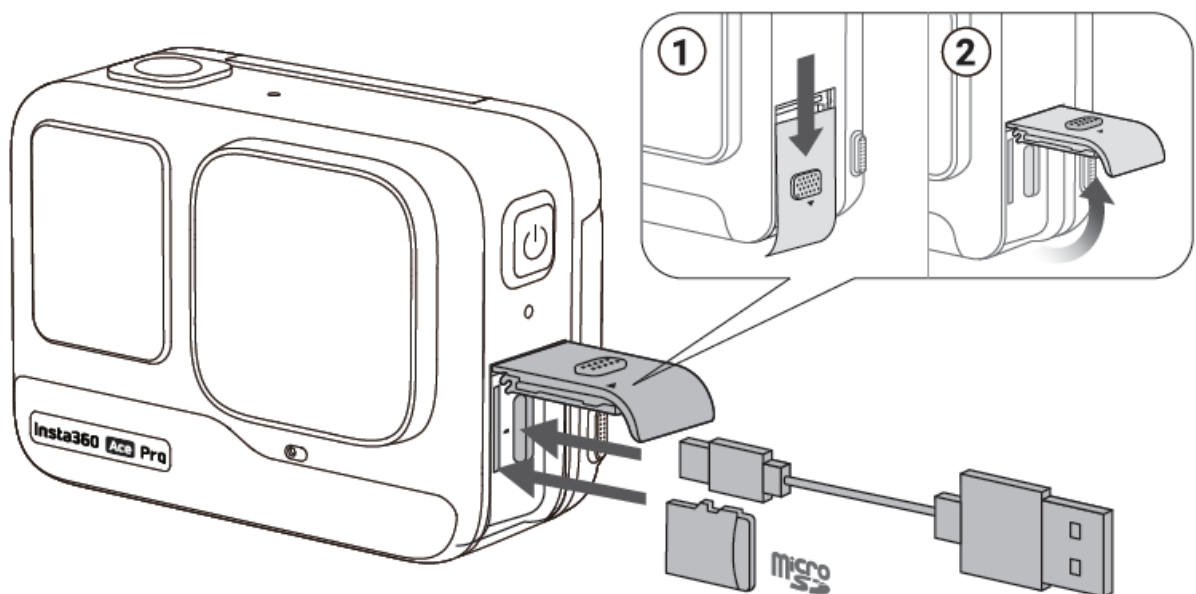
- **Q:** What should I do if the device does not connect via Bluetooth?
- **A:** If you encounter issues with Bluetooth connectivity, make sure the device is within range and try restarting both the Insta360 Ace Pro and your Bluetooth-enabled device.
- **Q:** Can I charge the device with any power adapter?
- **A:** It is recommended to use a power adapter that supports input of 5-9V and a minimum output of 3A to ensure safe and efficient charging.

Installation Instructions

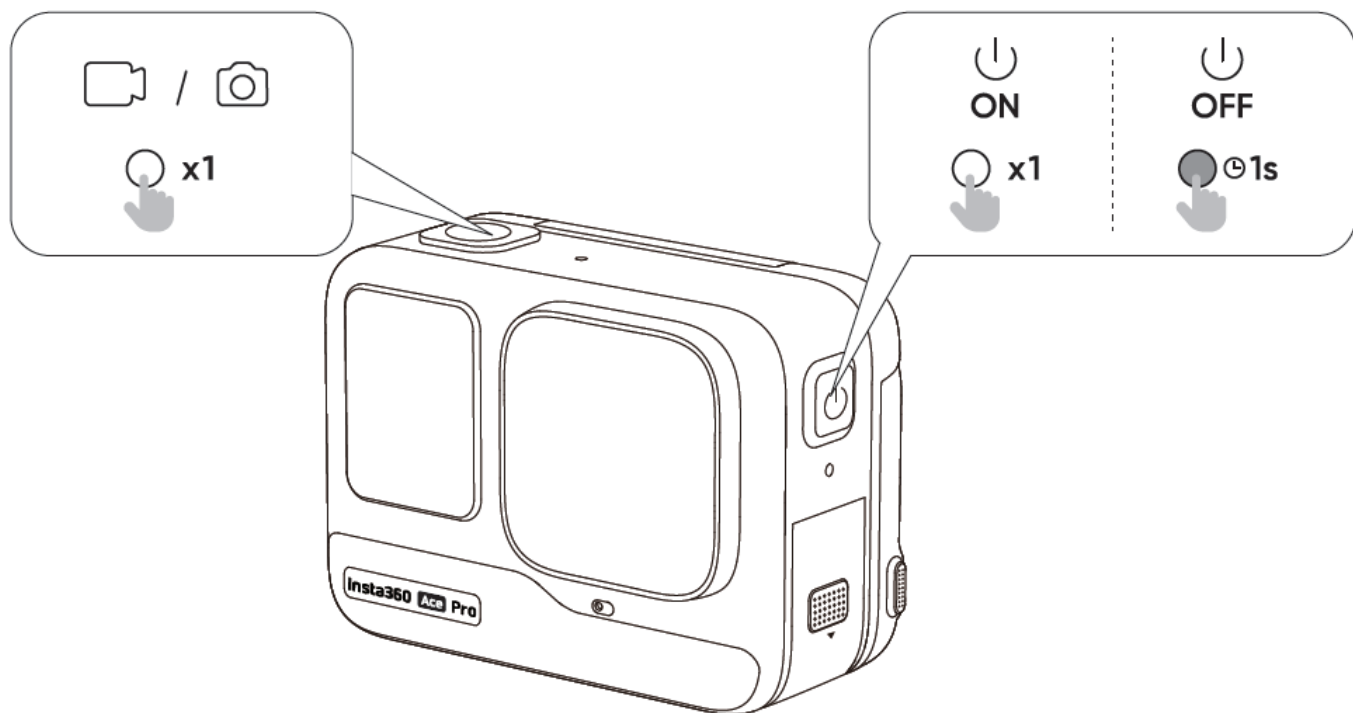
- Scan the code to get the detailed tutorial
- <https://www.insta360.com/guide/ace>.



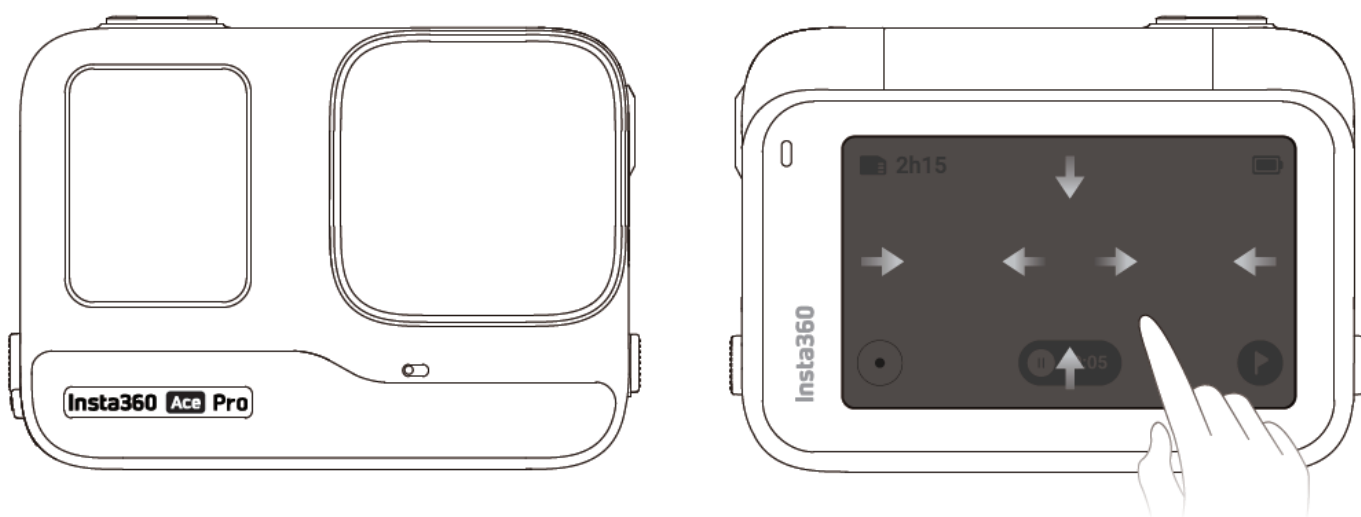
- Open the USB Cover to insert a memory card and connect to a power source for charging.



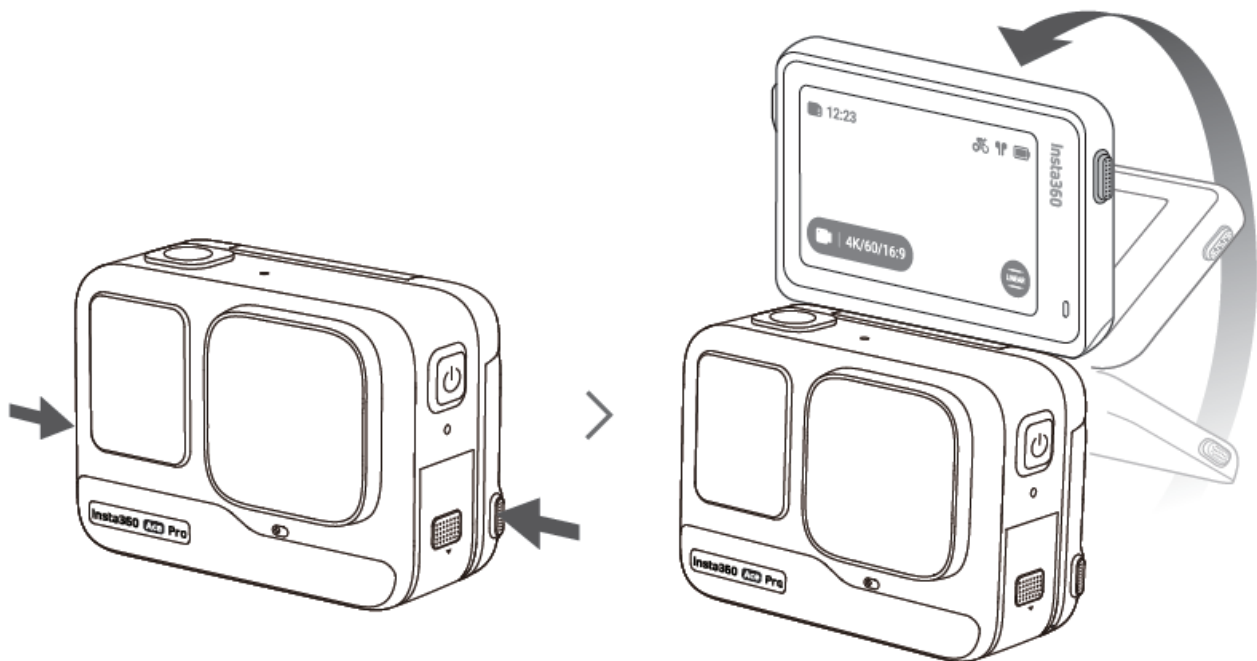
- Body button function



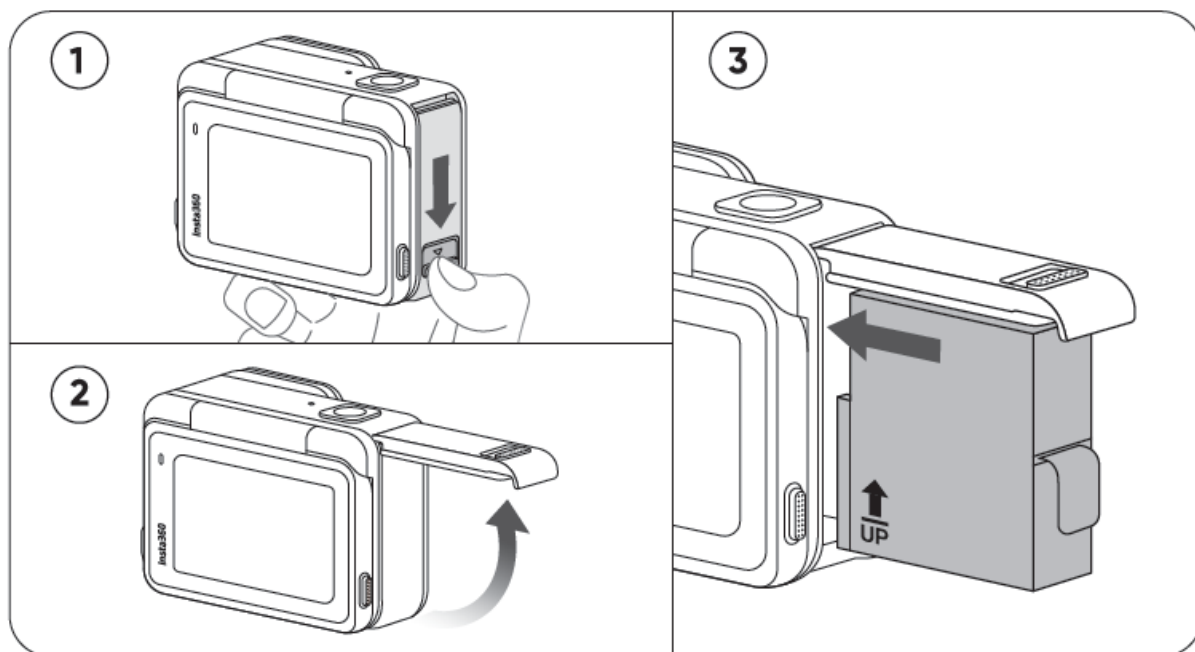
- Screen Use



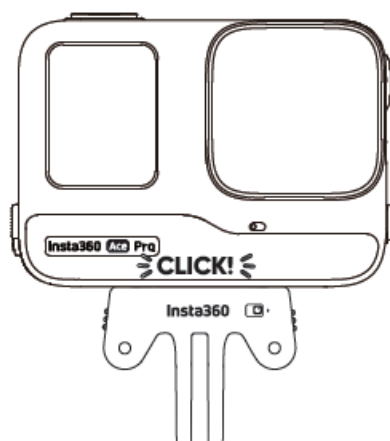
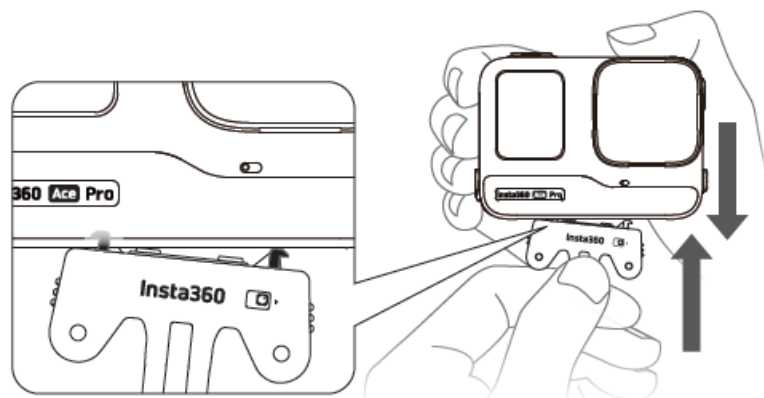
- Reversible touch screen



- The battery UP logo needs to point up



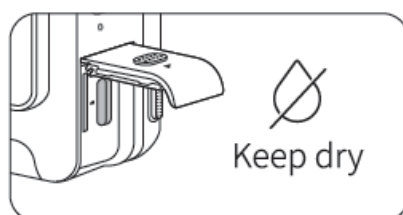
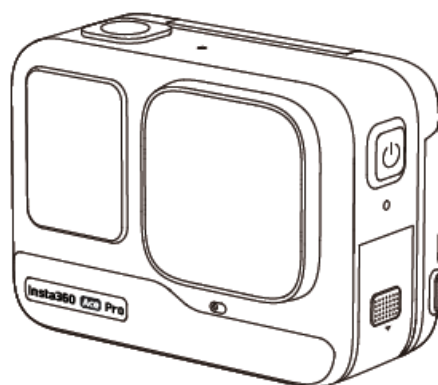
- With a two-claw quick release, you can install a selfie stick and other accessories



PRECAUTION




Waterproof
10m



Specifications

Name	Insta360 Ace Pro
Model	CINSAAJA
Input	5-9V 3A Max
Bluetooth	
Operation Frequency	Bluetooth: 2402~2480MHz
Output Power (E.I.R.P.)	10dbm
WIFI	
Operation Frequency	2.4GHz WIFI: 2400~2483MHz 5.1GHz WIFI: 5150MHz~5250MHz; 5.8GHz WIFI: 5725MHz~5850MHz
Output Power (E.I.R.P.)	2.4GHz WIFI: 13dbm; 5.1GHz WIFI: 13dbm; 5.8GHz WIFI: 13dbm.
Battery Capacity	1650 mAh
Energy	6.35 Wh
Operation Temperature	-20°C – 40°C

Compliance Information

FCC Statement

This equipment has been tested and found to comply with the limits for a Class B digital device, according to Part 15 of the FCC Rules. These limits are designed to provide reasonable protection against harmful interference in a residential installation. This equipment generates uses and can radiate radio frequency energy and, if not installed and used under the instructions, may cause harmful interference to radio communications. However, there is no guarantee that interference will not occur in a particular installation. If this equipment does cause harmful interference to radio or television reception, which can be determined by turning the equipment off and on, the user is encouraged to try to correct the interference by one or more of the following measures:

- Reorient or relocate the receiving antenna.
- Increase the separation between the equipment and the receiver.
- Connect the equipment to an outlet on a circuit different from that to which the receiver is connected.
- Consult the dealer or an experienced radio/TV technician for help.

This device complies with part 15 of the FCC Rules. Operation is subject to the following two conditions:

1. This device may not cause harmful interference, and
2. this device must accept any interference received, including interference that may cause undesired operation.

Changes or modifications not expressly approved by the party responsible for compliance could void the user's

authority to operate the equipment.

FCC SAR

1. The radiated output power of this device is below the FCC radio frequency exposure limits.

Nevertheless, the device should be used in such a manner that the potential for human contact is minimized during normal operation.

The exposure standard for wireless devices employs a unit of measurement known as the Specific Absorption Rate or SAR. The SAR limit set by the FCC is 1.6 W/kg. Tests for SAR are conducted using standard operating positions accepted by the FCC with the device transmitting at its highest certified power level in all tested frequency bands. Although the SAR is determined at the highest certified power level, the actual SAR level of the device while operating can be well below the maximum value. This is because the device is designed to operate at multiple power levels to use only the power required to reach the network. In general, the closer you are to a wireless base station antenna, the lower the power output. To avoid the possibility of exceeding the FCC radio frequency exposure limits, human proximity to the antenna should be minimized.

For body-worn operation, this model device has been tested and meets the FCC RF exposure. Guidelines when used with an accessory designated for this product or when used with an accessory that contains no metal and that positions the handset a minimum of 5mm from the body.

2. The maximum SAR value is 0.764W/kg when the device is used 5mm close to the user.

IC STATEMENT

This device complies with Industry Canada's licence-exempt RSSs. Operation is subject to the following two conditions:

1. This device may not cause interference; and
2. This device must accept any interference, including interference that may cause undesired operation of the device.

IC SAR

For body-worn operation, the device has been tested and meets the standards RSS-102&IEEE 1528-2013 of IC RF exposure. The maximum SAR value is 0.764W/kg when the device is used 5mm close to the user.

the device for operation in the band 5150–5250 MHz is only for indoor use to reduce the potential for harmful interference to co-channel mobile satellite systems.




Declaration of Conformity

Arashi Vision Inc. hereby, declares that this product complies with the essential requirement and other relevant provisions of the directive 2014/53/EU.

GB Compliance Statement

Arashi Vision Inc. hereby, declares that this product complies with the essential requirement and other relevant provisions of Radio Equipment Regulations 2017.

The device is restricted to indoor use when operated in the European Community using frequency 5150MHz~5250MHz to reduce the potential for interference.

	BE	BG	CZ	DK	DE	EE
	IE	EL	ES	FR	HR	IT
	CY	LV	LT	LU	HU	MT
	NL	AT	PL	PT	RO	SI
	SK	FI	SE	UK(NI)	TR	NO
	CH	IS	LI			

	UK
-----------------------------------------------------------------------------------	----



WEEE Directive

Correctly dispose of this product. This marking indicates that this product should not be disposed of with other household wastes throughout the EU/UK. To prevent possible harm to the environment or human health from uncontrolled waste disposal, recycle responsibly to promote the sustainable reuse of material resources. To safely recycle your device, please use return and collection systems or contact the retailer where the device was originally purchased.

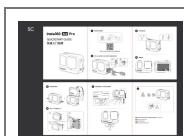
Japan Warning message

5.2 GHz band is restricted to indoor use only

CONTACT

- ADD: 11th Floor, Building 2, Jinlitong Financial Center, Baoan District, Shenzhen, Guangdong, China
- WEB: www.insta360.com
- TEL: [400-833-4360](tel:400-833-4360) +1 800 6920 360
- EMAIL: service@insta360.com

Documents / Resources



[Insta360 CINSAAJA Ace Pro Action Camera](#) [pdf] User Guide

CINSAAJA Ace Pro Action Camera, CINSAAJA, Ace Pro Action Camera, Pro Action Camera, Action Camera, Camera

References

- [User Manual](#)

[Manuals+](#), [Privacy Policy](#)

This website is an independent publication and is neither affiliated with nor endorsed by any of the trademark owners. The "Bluetooth®" word mark and logos are registered trademarks owned by Bluetooth SIG, Inc. The "Wi-Fi®" word mark and logos are registered trademarks owned by the Wi-Fi Alliance. Any use of these marks on this website does not imply any affiliation with or endorsement.