



inspire Java Ceiling Fan 132cm with Light Instruction Manual

[Home](#) » [INSPIRE](#) » inspire Java Ceiling Fan 132cm with Light Instruction Manual 

Contents




- 1 inspire Java Ceiling Fan 132cm with Light
- 2 WARNING SYMBOLS
- 3 GENERAL SAFETY INSTRUCTIONS
 - 3.1 General
 - 3.2 Electrical Safety
- 4 SPECIFIC SAFETY RULES
- 5 ENVIRONMENTAL PROTECTION
- 6 APPLIANCE SPECIFICATIONS
- 7 MAINTENANCE / CLEANING
- 8 REPAIR GUIDE
- 9 GUARANTEE
 - 9.1 WARRANTY DURATION
 - 9.2 WARRANTY APPLICATION
 - 9.3 QUESTIONS AND CLAIMS
- 10 OTHERS (SERVICE, REPAIRING, ETC.)
- 11 CE DECLARATION
- 12 Documents / Resources
 - 12.1 References
- 13 Related Posts



inspire Java Ceiling Fan 132cm with Light



WARNING SYMBOLS

	Read the instructions carefully.
	Lamp
	Protective Earth

GENERAL SAFETY INSTRUCTIONS

Read this instruction manual thoroughly before using the appliance and save it for future reference and if necessary pass the instruction manual on to a third party.

WARNING: When using electrical appliance, basic safety precautions should always be followed to reduce the risk of fire, electrical shock and personal injury.

WARNING: If unusual oscillating movement is observed, immediately stop using the ceiling fan and contact the manufacturer, its service agent or suitably qualified persons.

General

Check if the electrical specifications of the appliance are compatible with your installation.

Unauthorized use or technical modification to the appliance can lead to danger to life and health.

This appliance is not intended for use by persons(including children)with reduced physical ,sensory or mental capabilities, or lack of experience and knowledge, unless they have been given supervision or instruction concerning use of the appliance by a person responsible for their safety.

This appliance is for indoor use only except moist or wet room.

Means for disconnection must be incorporated in the fixed wiring in accordance with wiring rules into force.

The supplier disclaims all liability for personal injury or property damage arising from incorrect use or installation of the fan. In doubt, call upon an electrician.

Children should be supervised to ensure that they do not play with the appliance.

Be careful when working near the rotating blades.

Warning: only to be installed outside arms reach.

This appliance can be used by children aged from 8 years and above and persons with reduced physical, sensory or mental capability-ties or lack of experience and knowledge if they have been given supervision or instruction concerning use of the appliance in a safe way and understand the hazards involved. Children shall not play with the appliance. Cleaning and user maintenance shall not be made by children without supervision.

Electrical Safety

The product should be installed by an authorized electrician in accordance to national wiring rules.

The replacement of parts of the safety suspension system device shall be performed by the manufacturer, its service agent or suitably qualified persons.

The mounting of the suspension system shall be performed by the manufacturer, its service agent or suitably qualified persons. An all-pole disconnecter with isolating distance of 3mm must be incorporated in the fixed wiring

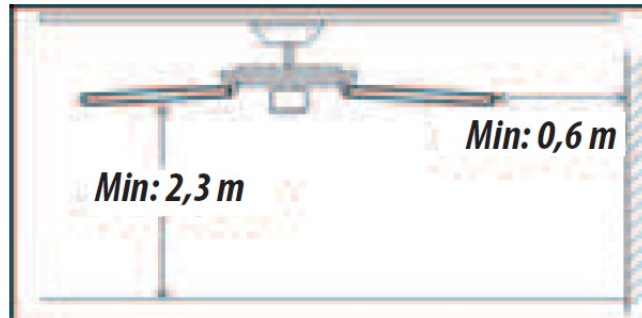
in accordance with the national wiring rules.

This product is in accordance with safety standards into force. Repairs should be exclusively performed by qualified technicians using original spare parts. Any breach of this instruction may be particularly dangerous for the users.

The fixing means for attachment to the ceiling such as hooks or other devices shall be fixed with a sufficient strength to withstand 4 times the weight of the ceiling fan.

The model or type reference of a luminaire that may be installed in a fan constructed for this purpose.

SPECIFIC SAFETY RULES



The fan base mounting bracket can support a load of 36 kgs. The fan is to be installed so that the blades are more than 2,3m above the floor and the blades distance to wall min 0.6m.

ENVIRONMENTAL PROTECTION

CAUTION!

Electrical products must not be thrown out with domestic waste. They must be taken to a communal collecting point for environmentally friendly disposal in accordance with local regulations. Contact your local authorities or stockiest for advice on recycling. The packaging material is recyclable. Dispose of the packaging in an environmentally friendly manner and make it available for the recyclable material collection-service.

APPLIANCE SPECIFICATIONS

TECHNICAL CHARACTERISTICS	
Rated voltage	220V-240V
Rated frequency	50-60Hz
Operating Frequency	433,92 MHz
Transmit power	Max. -25.16dBm
Fan power input	27.0W
Bulb type	LED20W
Protection	class I
IP number	IP 20
Weight	5.8kg
Maximum fan flow rate	185.1m3/min
Service value	6.8(m3 /min)/W
Fan sound power level	Max. 52 dB(A)
Supply current	0.11A
Standby power consumption	0.5W
Maximum air velocity	3.1 meters/sec
Measurement standard for service value	(EU) No 206/2012,2009/125/EC

PF 0.5

This product contains a light source of energy efficiency class <D> – (EU) 2019/2015

MAINTENANCE / CLEANING

Always disconnect the appliance before cleaning or doing maintenance.

Never use a wet sponge to clean the appliance.

In order to not damage the product ,it is advisable to use adapted equipment to the fragile surfaces and products slowing the wear on the appliance.

REPAIR GUIDE

TROUBLE	PROBABLE CAUSE	SUGGEST REMEDY
Fan will not start	Fuse or circuit breaker blown. Loose power line connections to the fan. Speed controller not in correct position.	Check main and branch circuit fuses or circuit breakers. Check line wire connections to fan. Check speed controller's position.
Le ventilator Est Bryant	Top canopy touching ceiling. Loose fan blades screws. Ceiling fan not secured against ceiling. In correct speed controller.	Lower canopy from ceiling to ensure minimum 3mm clearance. Re-tighten all screws on fan blades but never over-tighten. Re-tighten all screws in the hanging bracket or plate. Change the controller to one supplied.
Mechanical noise		Allow at least for 8 hours setting-in period.
Fan wobbles	Fan blades are not horizontal to ceiling. Blade screws are loose.	Measure from ceiling to tips of blades ,then rotate fan so all blades are checked for equal height from ceiling(not adjustments may be made by slight pressure up or down on blade holders). Make sure all screws are securely fastened.

GUARANTEE

WARRANTY DURATION

The general legal warranty applies to all products for 2 years from the delivery of the goods and upon providing the receipt as the proof of the purchase.

However, INSPIRE goes beyond that. We want you to have the best experience possible with our products, thus we have extended the warranty periods for all INSPIRE products to 5 years.

WARRANTY APPLICATION

For the warranty to be applied, the product must have been installed, used and maintained according to the Instruction Manual guidelines.

QUESTIONS AND CLAIMS

If you have any questions or encounter any problems regarding the use of the product, its performance or visual aspect, you are welcome to contact your vendor through the contact information you will find on the purchasing receipt.

OTHERS (SERVICE, REPAIRING, ETC.)

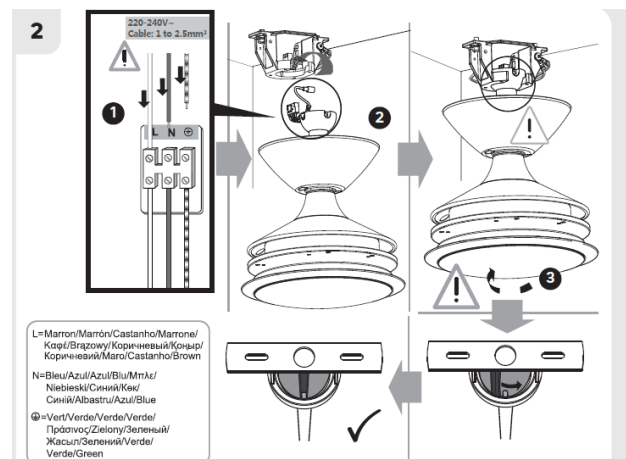
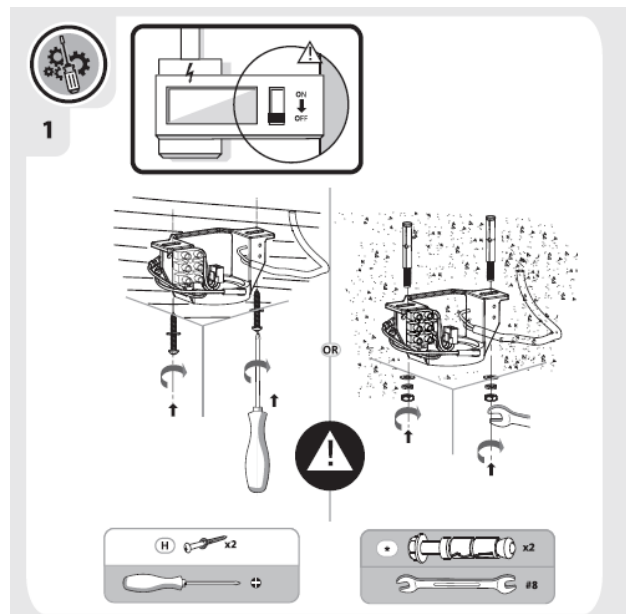
Have your product repaired by a qualified person.

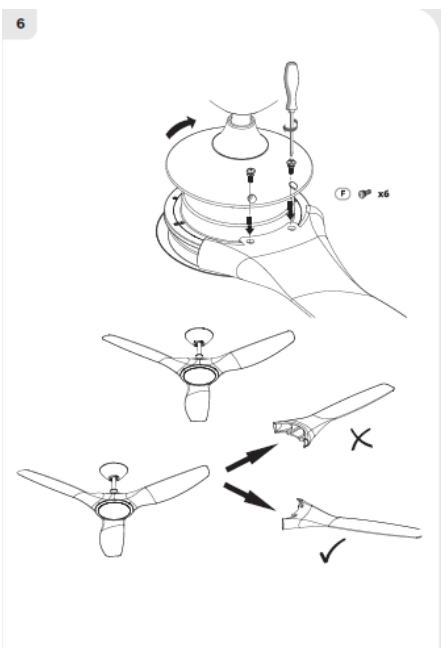
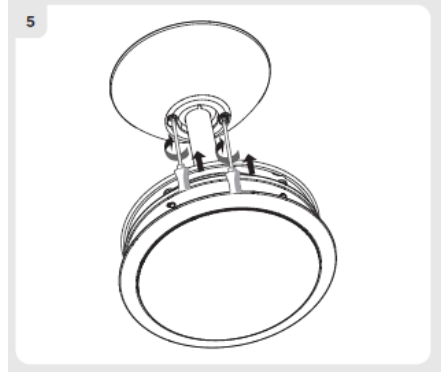
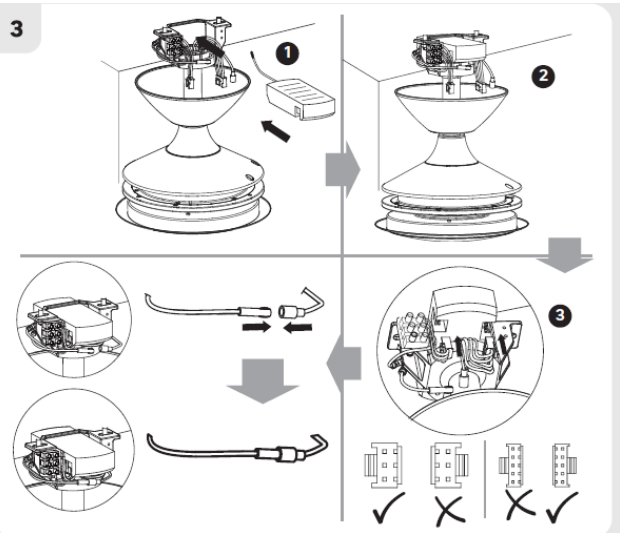
This electric product is in accordance with the relevant safety requirements.

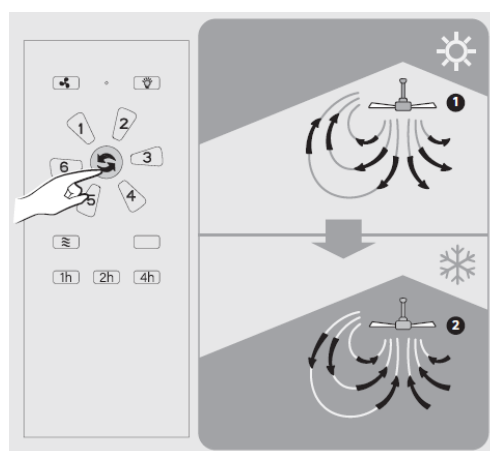
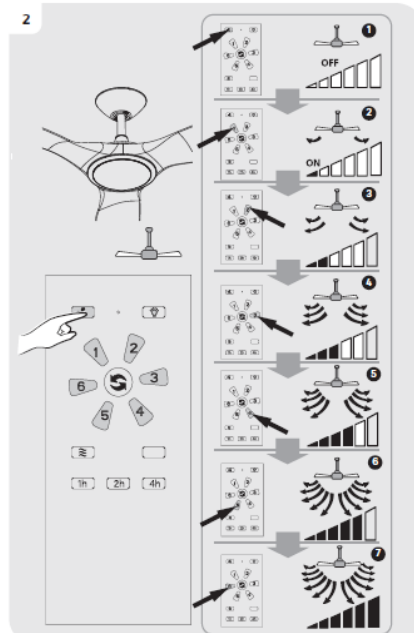
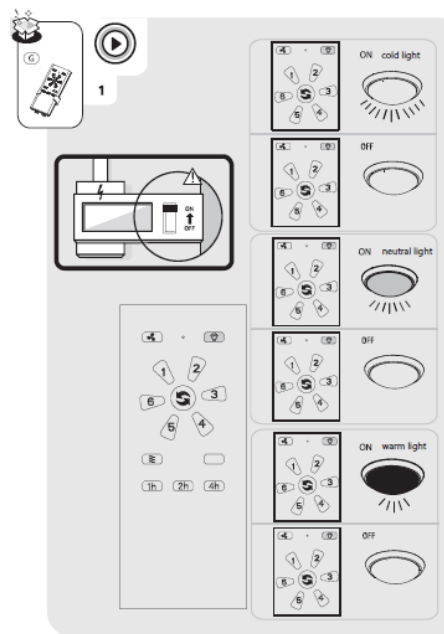
Repairs should only be carried out by qualified persons using original spare parts, otherwise This may result in considerable danger to the user.

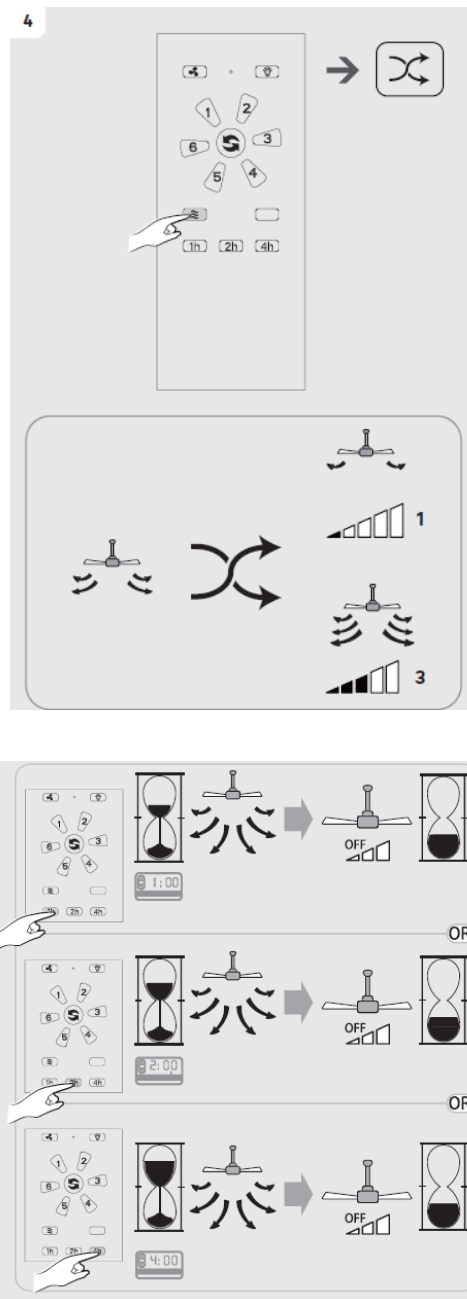
Please contact the store which you bought the product for after sale services if any question. Please contact the store which you bought the product if you lost the installation manual..

The light source contained in this luminaire shall only be replaced by the manufacturer or his service agent or a similar qualified person.









For the first use, the fan and the remote control are already paired. Pair setting may occur in following situations:

1. You get a new wireless remote control spare part.
 2. You would like to use one remote control to control two fans.
 3. You get a new receiver spare part.
- 1 . To pair 1 remote control to 1 fan.
 - 1-1 Turn on power supply switch and the short “beep” sound is heard
 - 1-2 Quickly press the” positive and negative key “until a long “beep” sound is heard; the pairing is successful.
 - 1-3 If “beep” sound is not heard, the pairing has failed. Turn off the power for 2 minutes, repeat the operation.
 - 2. To pair 1 remote control to 2 fans
 - 2-1 Pair the remote control to each fan one after the other. You could manage the pairing two ceiling fans at the same moment (refer to the above case 1 « To pair 1 remote control to 1 fan»).
 - 3. When the remote control is paired with 2 fans, and you want to pair it with only 1 fan
 - 3-1 Repeat the pairing operation of each ceiling fan with its remote control.

CE DECLARATION

SPARE PARTS

Some parts of this product can be ordered from your store

Documents / Resources

	<p>inspire Java Ceiling Fan 132cm with Light [pdf] Instruction Manual D52-19C018-C01L, Java Ceiling Fan 132cm with Light, Java, Ceiling Fan 132cm with Light, Ceiling Fan, Fan</p>
---	--

References