



InSinkErator Evolution Compact Garbage Disposer User Manual

[Home](#) » [InSinkErator](#) » InSinkErator Evolution Compact Garbage Disposer User Manual 

Contents

- [1 InSinkErator Evolution Compact Garbage Disposer User Manual](#)
- [2 Parts Included](#)
- [3 Tools and Materials \(not included\)](#)
- [4 Dimensions](#)
- [5 Removal of the old disposer](#)
 - [5.1 Installation of the new disposer](#)
- [6 INSTALLING AND REPLACING THE BIO-CHARGE™ BOTTLE\(For SepticAssist Model Only.\)](#)
- [7 USER MAINTENANCE INSTRUCTIONS](#)
- [8 IN-HOME FULL-SERVICE WARRANTY](#)
- [9 INSTRUCTIONS PERTAINING TO RISK OF FIRE, ELECTRIC SHOCK, OR INJURY TO PERSONS \(SAVE THESE INSTRUCTIONS\)](#)
- [10 Related Posts](#)

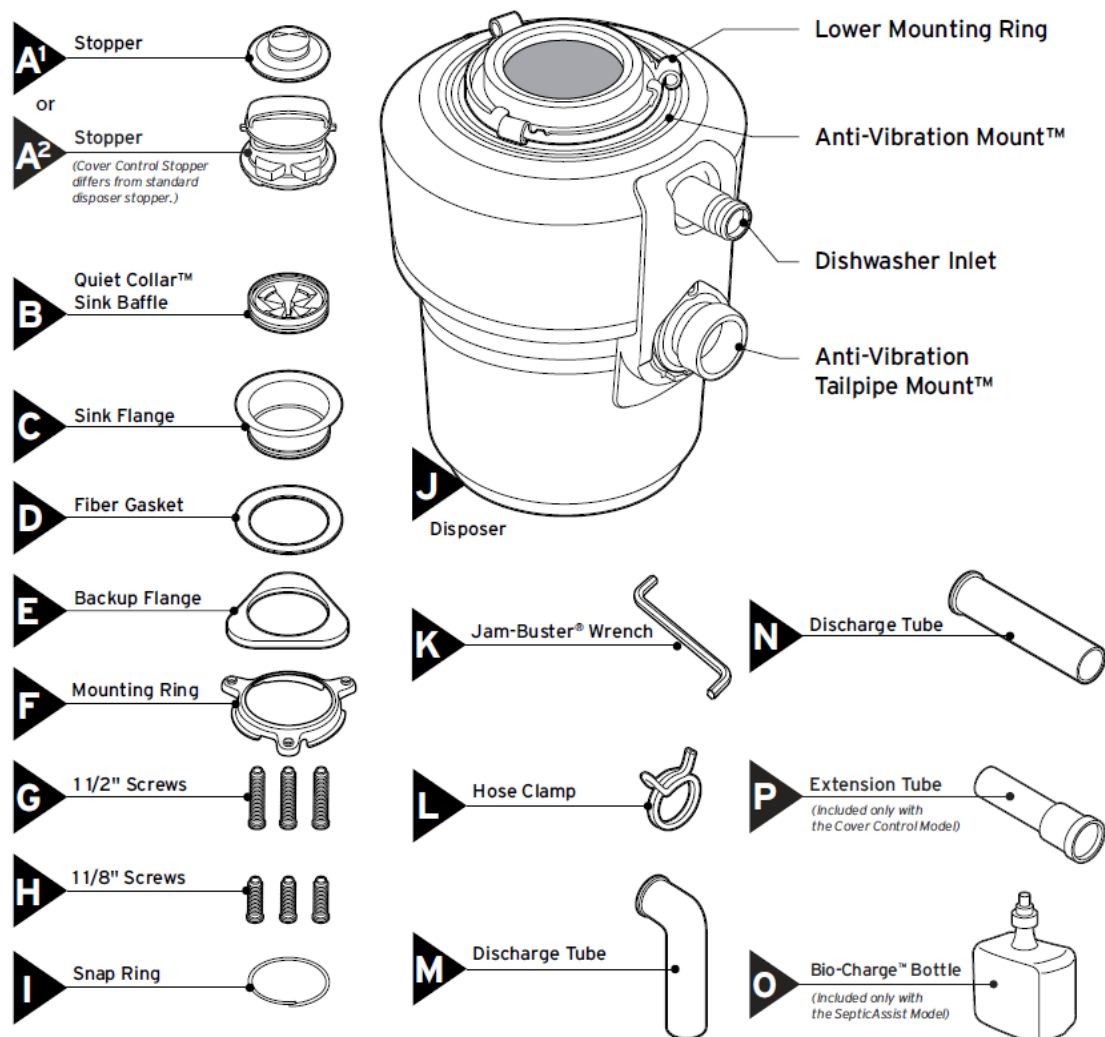


InSinkErator Evolution Compact Garbage Disposer User Manual

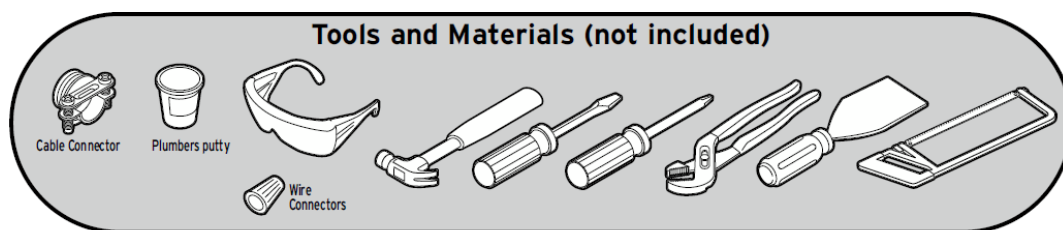


The Evolution series by InSinkErator® is a new standard in sound and grind performance. Featuring exclusive patented SoundSeal™ and MultiGrind™ technologies, no food waste disposer grinds more with less noise.

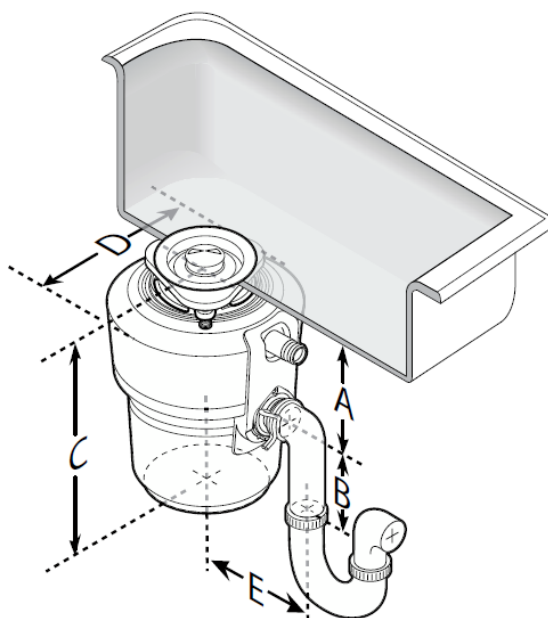
Parts Included



Tools and Materials (not included)



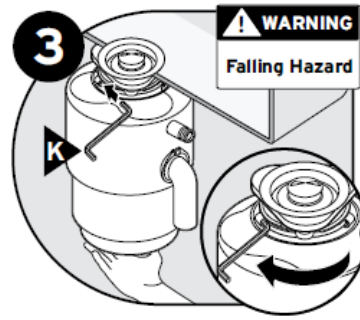
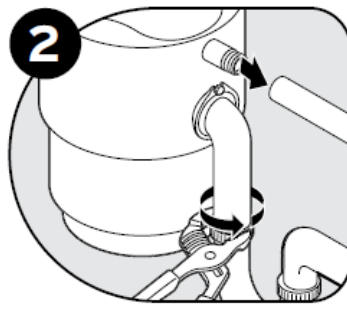
Dimensions



Model	A	B	C	D	E
Excel	6 11/16"	4"	13 1/2"	9"	5 3/4"
Premier	6 11/16"	4"	12 5/8"	8 3/4"	5 3/4"
Essential	6 11/16"	4"	12 5/8"	8 3/4"	5 3/4"
Compact	6"	4"	12 1/8"	8"	5 3/4"
Space Saver	6"	4"	12 1/8"	8"	5 3/4"
Cover Control	6 11/16"	4"	13 1/2"	10"	5 3/4"
SepticAssist	6 11/16"	4"	12 5/8"	8 3/4"	5 3/4"

Removal of the old disposer

1. If you are replacing an existing disposer, continue to Step 2. If there is no existing disposer, disconnect the sink drain and skip to Step 10.

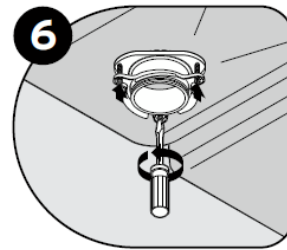
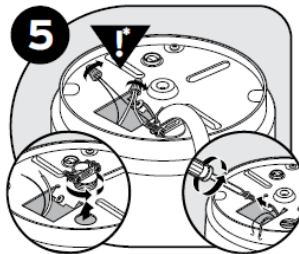
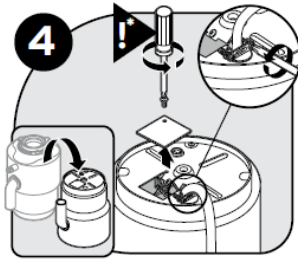


WARNING

SHOCK HAZARD

Turn off electric power at the fuse box or circuit breaker.

2. Disconnect the drain trap from the waste discharge tube. Disconnect the dishwasher if connected to the disposer.
3. Support disposer, insert the end of Jam-Buster® wrench (K) into the right side of a mounting lug, and turn. Disposer will fall free.



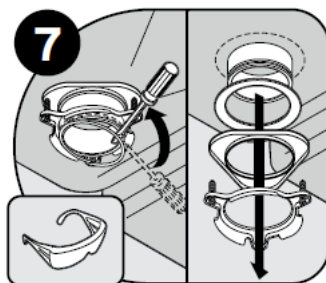
4. *WARNING: SHOCK HAZARD

With the electrical supply turned off, flip the disposer over and remove the electrical cover plate. Save cable connector if applicable.

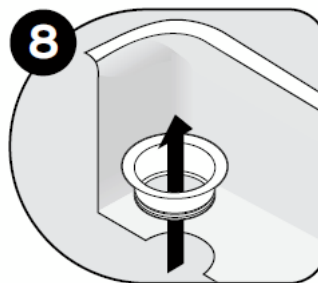
5. *WARNING: SHOCK HAZARD

With the electrical supply turned off, disconnect the disposer wires from the electrical supply.

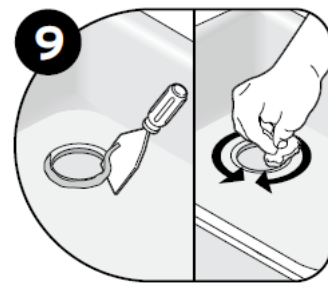
6. Loosen the 3 screws on the mounting assembly. If the new disposer mounting is the same as the old one, you can go to step 15. Note: For sinks thicker than 3/8", you will need to replace existing 1 1/2" screws with 1 1/8" screws (H). See step 14.
7. Using a screwdriver, remove the snap ring.



Using a screwdriver, remove the snap ring.

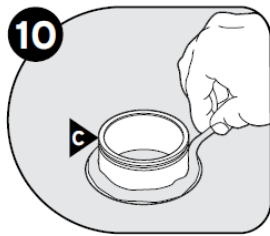


Remove flange from sink.

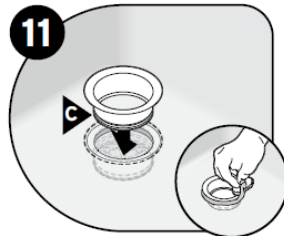


Remove old plumber's putty from sink with putty knife.

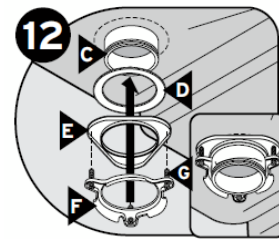
8. Remove the flange from the sink.
9. Remove the old plumber's putty from the sink with a putty knife.
10. Evenly apply a 1/2" thick rope of plumber's putty around the flange (C).



Evenly apply 1/2" thick rope of plumber's putty around flange (C).

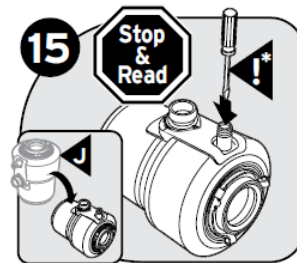
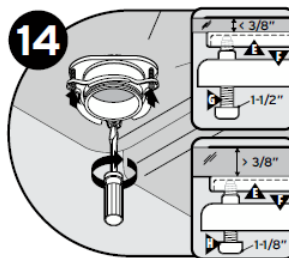
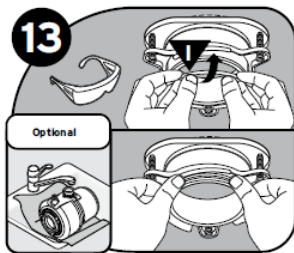


Press flange (C) firmly into sink drain. Remove excess putty.

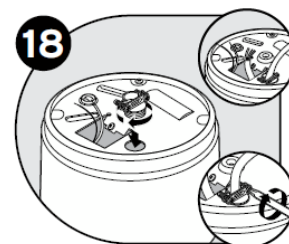
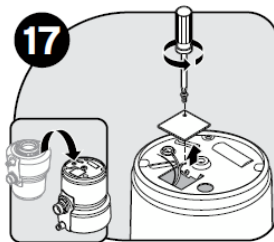
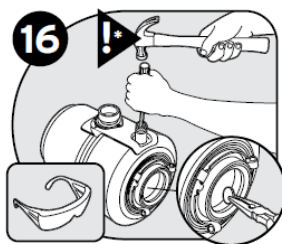


Insert fiber gasket (D), backup flange (E) and mounting ring (F). Hold in place while inserting snap ring (I).

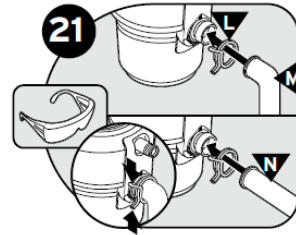
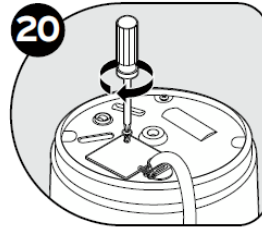
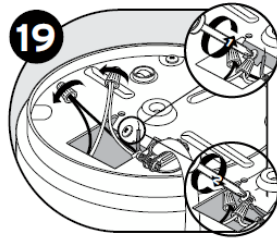
11. Press flange (C) firmly into the sink drain. Remove excess putty.
12. Insert fiber gasket (D), backup flange (E), and mounting ring (F). Hold in place while inserting snap ring (I).
13. Place a weight such as the dis-poser on the sink flange to hold it in place. Use a towel to prevent scratching the sink. Pull the snap ring open and press firmly until it snaps into place.



14. Tighten 1 1/2" screws (G) evenly and firmly against the backup flange. Use shorter 3/8" screws (H) if a sink is more than 3/8" thick.
15. ***CAUTION: DISHWASHER CONNECTION ONLY** If you do not need to attach the dishwasher, go to step 17. Turn disposer (J) onto the side and insert a screwdriver into the dishwasher inlet.
16. ***CAUTION: DISHWASHER CONNECTION ONLY** Knock out the drain plug and remove the plug from the inside of the disposer.



17. ***WARNING: SHOCK HAZARD.** Turn the disposer over and remove the electrical cover plate. Pull out wires. DO NOT REMOVE THE CARDBOARD SHIELD.
18. ***WARNING: SHOCK HAZARD.** With the electrical supply turned off, insert the cable connector (not included), and run the electrical cable through the access hole on the bottom of the disposer. Tighten the cable connector.
19. ***WARNING: SHOCK HAZARD** Connect white to white and black to black or red with wire nuts (not included); ground wire to the green grounding screw. The unit must be grounded for safe and proper installation.

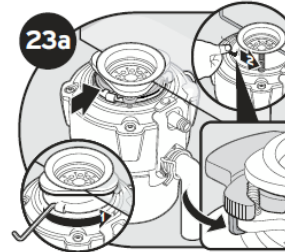
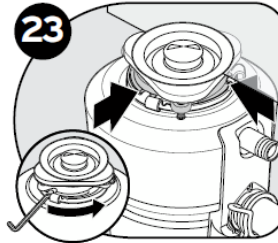
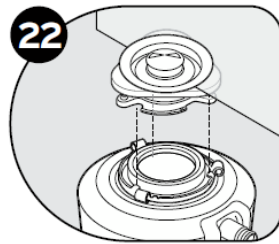


20. Push wires into the disposer (do not displace the cardboard shield) and replace the electrical cover plate.

21. Place tube (M or N) into Anti-Vibration Tailpipe Mount. Use provided tubes for best results. Secure with hose clamp (L).

22. ***CAUTION:**

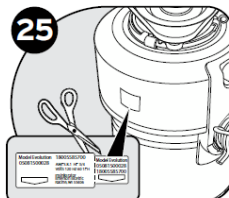
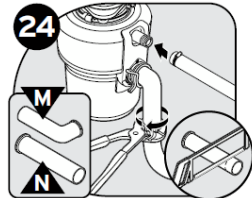
USE ONLY THE INSINKERATOR-SUPPLIED HOSE CLAMP. NON-APPROVED CLAMPS WILL VOID THE WARRANTY AS THEY WILL DAMAGE THE ANTI-VIBRATION TAILPIPE MOUNT. Hang disposer by aligning 3 mounting tabs with slide-up ramps on the mounting ring.



23. Turn the mounting ring until all 3 mounting tabs lock over the ridges on the slide-up ramps.

24. **(COVER CONTROL MODEL ONLY)**

Turn the mounting ring until all 3 mounting tabs lock over the ridges on the slide-up ramps. Attach the magnetic cover control switch to the screws. Make sure plastic guides go UNDER the mounting rings.



25. You may need to trim the tube for proper fit. Reconnect plumbing (and dishwasher connection if used). Make sure Anti-Vibration Tailpipe Mount is straight.

26. Detach the removable portion of the spec label and place it in a visible location.

27. Insert Quiet Collar™ Sink Baffle into the sink opening. Fill the sink with water, then test for leaks.

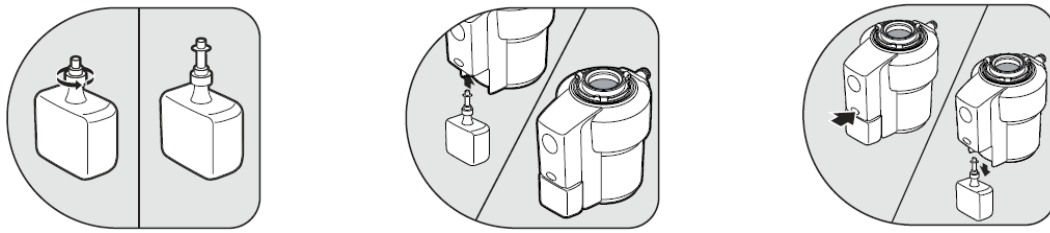
Installation of the new disposer

CAUTION CLEAN DRAIN LINE BEFORE INSTALLING DISPOSER

Failure to clean the sink drain line may result in drain line blockage. With the drain auger, clear all hardened waste material in the horizontal drain line.

INSTALLING AND REPLACING THE BIO-CHARGE™ BOTTLE (For SepticAssist Model Only.)

INSTALLING THE BIO-CHARGE BOTTLE: Use only InSinkErator Bio-Charge™. See “Changing Bio-Charge™ Bottle” for safety instructions and information on obtaining Bio-Charge replacements. Do not squeeze the Bio-Charge bottle; squeezing the bottle may cause the Bio-Charge to discharge and spill.



REPLACING THE BIO-CHARGE BOTTLE

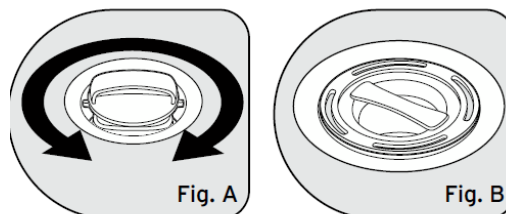
To keep your septic system operating at peak efficiency, replace the Bio-Charge™ bottle when it is empty. Bio-Charge™ is available wherever InSinkErator Septic Disposers are sold. For Bio-Charge reorders, questions or comments call toll-free 1 (888) 527-1493. Unscrew the Bio-Charge™ dispenser cap nozzle counterclockwise until the nozzle pops upward to the dispensing position. Do not remove the dispenser cap nozzle. Aligning bottle with concave side toward disposer, insert bottle up into holder until you hear a click and bottle snaps into place. Pull the bottle down slightly to ensure it is engaged. Make sure the disposer is off. Press the button on the disposer just above the bottle and pull the bottle down to remove it. (Do not refill or reuse empty bottles.)

OPERATING INSTRUCTIONS (CONTINUOUS FEED MODELS)

1. Remove the stopper from the sink opening and run a strong flow of cold water.
2. Turn on the wall switch to start the disposer.
3. Slowly insert food waste into the disposer and position the stopper to minimize possible ejection of material while grinding.
4. After grinding is complete, turn the disposer off and run water for a few seconds to flush the drain line.

OPERATING INSTRUCTIONS (COVER CONTROL MODELS)










1. Place food waste into the disposer grind chamber. Do not pack the chamber with waste. Run a strong flow of cold water.
2. Place the stopper back into the sink opening in the disposer position (See Figure A).
3. Activate the disposer by turning the stopper left or right until the disposer begins grinding.
4. After grinding is complete, turn the disposer off and run water for a few seconds to flush the drain line.
5. In order to fill the sink with water, invert the stopper to plug the drain (See Figure B).



TIPS FOR TROUBLE-FREE OPERATION

- Run the disposer along with a moderate to strong flow of cold water, and continue running cold water for 15 seconds after grinding is complete.
- Avoid using hot water when grinding food waste. It is OK to drain hot water into the disposer between grinding periods.

- Avoid pouring grease or fat into your disposer or drain.

Everyday food waste scraps			
Vegetable Peels	Avoid grinding large amounts at one time – gradually feed peels in while disposer and water are both running		
Fibrous Materials (Celery, corn husks, artichokes)	Avoid grinding	Avoid grinding large amounts	
Hard Materials (Bones, fruit pits)	Avoid grinding large amounts		
Stop worrying about what food you can or can't put in your disposer	-	-	

Standard Disposers (Badger® Series)

- Use a disposer cleaner to relieve objectionable odors caused by build-up, or grind citrus fruit peels to freshen up the drain area.
- Disposers may also be cleaned with Disposer Care®. This product is not sold by InSinkErator but is generally available in major home centers, hardware, and grocery stores. For more information on Disposer Care®, contact Iron Out Inc. at 800-654-0791 or www.ironout.com.

USER MAINTENANCE INSTRUCTIONS

CLEANING DISPOSER

Over time, food particles may accumulate in the grinding chamber and baffle. An odor from the disposer is usually a sign of grease and food buildup, caused by insufficient water flow during and after disposer use. To clean disposer:

1. Turn off the disposer and disconnect the power supply.
2. Place the stopper in the sink opening and fill the sink halfway with warm water.
3. Mix 1/4 cup baking soda with water. Turn the disposer on and remove the stopper from the sink at the same time to wash away loose particles.
4. Remove the Quiet Collar Sink Baffle and clean by hand or in the dishwasher. Do not operate the disposer without Quiet Collar Sink Baffle in place.

Disposers may also be cleaned with Disposer Care®. This product is not sold by InSinkErator but is generally available in major home centers, hardware, and grocery stores. For more information on Disposer Care®, contact Iron Out, Inc. at 1-800-654-0791 or www.ironout.com.

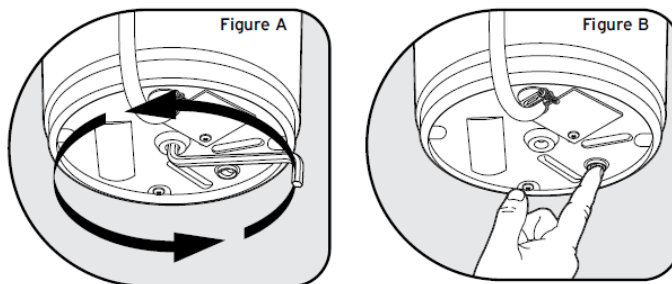
RELEASING DISPOSER JAM

This disposer is equipped with a Jam-Sensor Circuit™ that will prevent jams while grinding virtually any food material. In the unlikely event that the disposer is jammed, release it by following these steps.

If the motor stops while the disposer is operating, the disposer may be jammed. To release jam:

1. Turn off the disposer and water.
2. Insert one end of the self-service wren chatter into the center hole on the bottom of the disposer (see Figure A). Work wren chatter back and forth until it turns one full revolution. Remove wren chatter.

3. Reach into the disposer with tongs and remove the object(s). Allow the disposer motor to cool for 3 – 5 minutes, then lightly push the red reset button on the disposer bottom (see Figure B). (If the motor remains inoperative, check the service panel for tripped circuit breakers or blown fuses.)



IN-HOME FULL-SERVICE WARRANTY

Length of Warranty by Model:

- Excel: 7 years SpaceSaver: 4 years
- Essential: 6 years Cover Control: 7 years
- Premier: 5 years Septic Assist: 4 years
- Compact: 4 years
- SpaceSaver: 4 years
- Cover Control: 7 years
- Septic Assist: 4 years

This warranty covers all replacement parts and repairs labor to correct defects in disposer material and workmanship for the full warranty period from the date of installation in your home. If warranty service is required during the warranty period, contact an authorized InSinkErator® service center to replace or repair the unit in your home at no cost to you. If you have questions concerning your disposer or determining when service is needed, please call the toll-free InSinkErator® AnswerLine™ to obtain the name of the authorized service center nearest you. The toll-free number is 1 (800) 558-5700, or visit our website at www.insinkerator.com. This warranty gives you specific legal rights and you may also have other rights which vary from state to state. If the manufacturer determines the unit should be replaced rather than repaired, the warranty on the replacement unit will be limited to the unexpired term of the original warranty. No other express warranty, written or oral, applies.

If your disposer does not operate, follow these steps in order

1. Check the things you can do yourself. Be sure the disposer is connected to the electric power and the fuses or circuit breakers are in working order. Reread the instruction book to ensure that you are operating the disposer correctly.
2. Call InSinkErator®, or visit our website for information or for the location of the authorized service center nearest you. The toll-free number is 1 (800) 558-5700, or visit our website at www.insinkerator.com.
3. Write to us if a satisfactory solution is not reached in steps 1 and 2. Our address is:
 - InSinkErator®
 - Service Department
 - 4700 21st Street
 - Racine, Wisconsin 53406 USA

When writing or calling, supply the following information: date, your name, your address, and your phone number.

Describe the product by model number, serial number, date purchased, place purchased, and service history (including name and address of service agent). Clearly describe the problem and service required.

NOTE: Warranty is determined by unit serial number and date of installation. Purchase or installation receipt may be required to verify warranty status. The foregoing warranty does not apply to damage or operation resulting from accident, alteration, misuse, abuse, improper installation, or installation not in accordance with these instructions or local electrical and plumbing codes. The warranty will be voided if installed in a commercial or industrial application.

INSTRUCTIONS PERTAINING TO RISK OF FIRE, ELECTRIC SHOCK, OR INJURY TO PERSONS (SAVE THESE INSTRUCTIONS)

WARNING Personal Injury: Do not position your head or body under the disposer; the unit could fall during removal or installation.

WARNING Do not operate the disposer without the Anti-Vibration Tailpipe Mount™, as water leaks may result.

CAUTION Do not use the plumber's putty on any other disposer connection other than the sink flange. Do not use thread sealants or pipe dope. These may harm the disposer and cause property damage.

CAUTION Regularly inspect disposer and plumbing fittings for water leaks, as water leaks can cause property damage. Manufacturers cannot be held responsible for property damage as a result of water leaks.

WARNING Electric Shock: Improper connection of the equipment-grounding conductor can result in a risk of electric shock. Check with a qualified electrician or serviceman if you are in doubt as to whether the appliance is properly grounded. Do not modify the plug provided with the appliance – if it will not fit the outlet, have a proper outlet installed by a qualified electrician.

- This disposer must be properly grounded.
- Do not attach the ground wire to the gas supply pipe.
- Disconnect power before installing or servicing the disposer.
- If the three-prong grounded plug is used, the plug must be inserted into a three-hole grounded receptacle.
- All wiring must comply with local electrical codes.
- Do not reconnect the electrical current at the main service panel until the proper grounds are installed.

When using electric appliances, basic precautions are always to be followed, including:

- Read all instructions before using the appliance.
- To reduce the risk of injury, close supervision is required when an appliance is used near children.
- Do not put your fingers or hands into waste disposal.
- Turn the power switch to the off position before attempting to clear a jam, remove an object from the disposer, or press the reset button.
- When attempting to loosen a jam in a waste disposer, use the self-service wren chatter.
- To reduce the risk of injury by materials that are expellable by a waste disposer, do not operate the disposer without the Quiet Collar™ Sink Baffle in place. Do not put the following into a disposer: clam or oyster shells, caustic drain cleaners or similar products, glass, china, or plastic, large (whole) bones, metal (such as bottle caps, steel shot, tin cans, or utensils), hot grease or other hot liquids.
- When attempting to remove objects from a waste disposer, use long-handled tongs or pliers.
- This product is designed to dispose of normal household food waste; inserting materials other than food waste

into the disposer could cause personal injury and/or property damage.

- To reduce the risk of injury, do not use the sink containing the disposer for purposes other than food preparation (such as baby bathing or washing hair).
- Do not dispose of the following in the disposer: paints, solvents, household cleaners and chemicals, automobile fluids, and plastic wrap.
- Replace Quiet Collar Sink Baffle when worn to help prevent entry or ejection of material and water.
- FIRE HAZARD: Do not store flammable items such as rags, paper, or aerosol cans near the disposer. Do not store or use gasoline or other flammable vapors and liquids in the vicinity of the disposer.

C A U T I O N

CLEAN THE DRAIN LINE BEFORE INSTALLING THE DISPOSER

Failure to clean the sink drain line may result in drain line blockage. With the drain auger, clear all hardened waste material in the horizontal drain line.

Download PDF: [InSinkErator Evolution Compact Garbage Disposer User Manual](#)