

in sink erator®

## **BST-SG Boost Accessory**



# **InSinkerator BST-SG Boost Accessory Instruction Manual**

[Home](#) » [InSinkErator](#) » InSinkerator BST-SG Boost Accessory Instruction Manual 

### **Contents**

- [1 InSinkerator BST-SG Boost Accessory](#)
- [2 Product Information](#)
- [3 Product Usage Instructions](#)
- [4 FAQ](#)
- [5 Includes](#)
- [6 Boost Accessory Overview](#)
- [7 Safety Information](#)
- [8 Installation](#)
- [9 Initial Startup](#)
- [10 Replacing bottle of Boost solution](#)
- [11 Replacing Alkaline Batteries](#)
- [12 Troubleshooting](#)
- [13 WARRANTY INFORMATION](#)
- [14 Documents / Resources](#)
  - [14.1 References](#)
- [15 Related Posts](#)



**InSinkerator BST-SG Boost Accessory**



## Product Information

### Specifications:

- Models: BST-SG, BST-PG
- Includes Boost Accessory Device, Boost Solution, Power adapter, Dishwasher Inlet Sleeve, Dishwasher Inlet Adapter, Clamp x2, Wall mounting kit, Tubing, Wrenchette
- Requires 4 AA alkaline batteries if using batteries

## Product Usage Instructions

### Safety Instructions:

- **DANGER:** Indicates a hazardous situation resulting in death or serious injury.
- **WARNING:** Indicates a hazardous situation that could result in death or serious injury.
- **CAUTION:** Indicates a hazardous situation that could result in minor or moderate injury.
- **NOTICE:** Addresses practices not related to personal injury.

### Installation Steps:

1. Determine if the disposer inlet has a knockout or a plug at the end of the dishwasher inlet. Remove if necessary.
2. If connecting to a dishwasher, remove the Dishwasher Inlet Plug from the Dishwasher Inlet Adapter using a 1/4 hex wrench if needed.
3. If connecting to a dishwasher, ensure the dishwasher inlet plug is removed.

## FAQ

**Question 1:** What should I do if the low battery indicator light comes on?

**Answer:** If the low battery indicator light comes on, replace the batteries with 4 AA alkaline batteries.

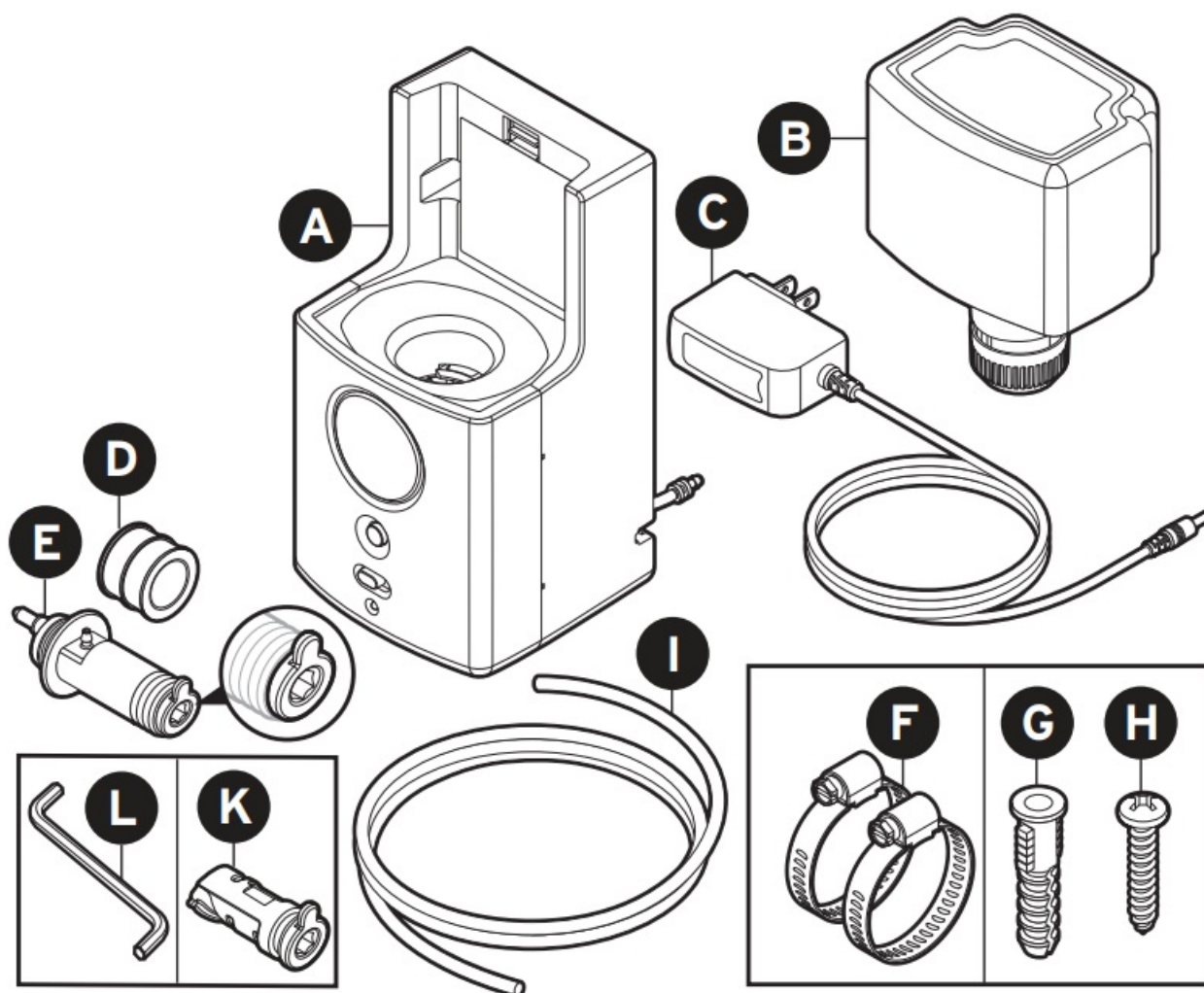
**Question 2:** How do I know if I need to remove the knockout or plug?

**Answer:** Check if there is a knockout or plug at the disposer inlet or dishwasher inlet. If present, follow the disposer manual for removal instructions.

Scan QR code to view installation video.

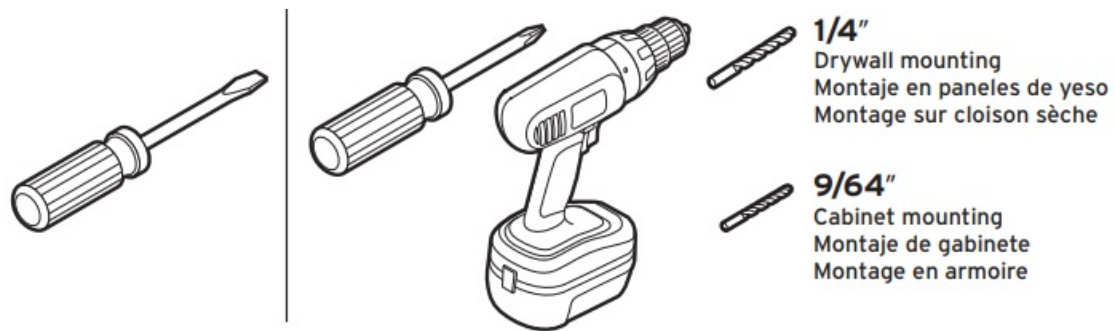


## Includes



Tools and Materials Needed (Not Included)

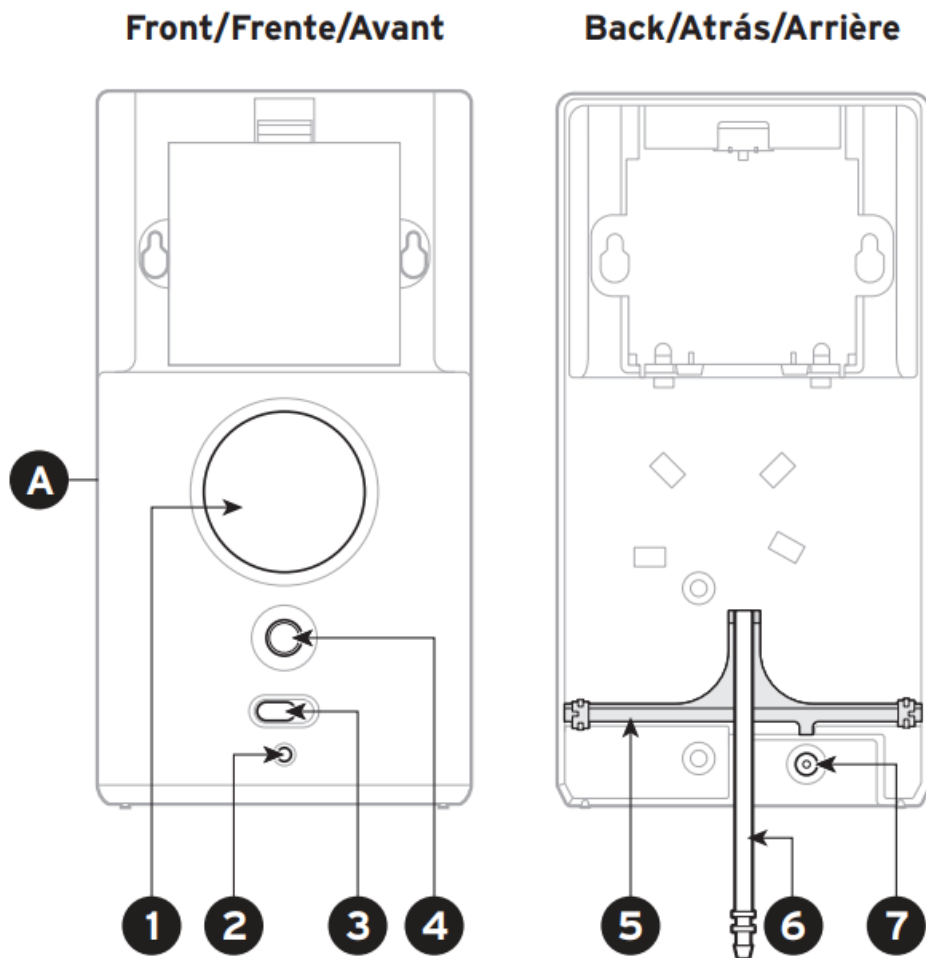
For Wall Mount Option



- **A.** Boost Accessory Device
- **B.** Boost Solution (SG-00,PG-00)
- **C.** Power adapter
- **D.** Dishwasher Inlet Sleeve
- **E.** Dishwasher Inlet Adapter with Dishwasher Inlet Plug
- **F.** Clamp x2
- **G.** Wall mounting kit drywall anchor x2
- **H.** Wall mounting kit mounting screw x2
- **I.** Tubing  
Pre-assembled to disposer
- **K.** Dishwasher Inlet Plug  
Included with disposer
- **L.** Wrenchette

**Note:** If using batteries, 4 AA alkaline batteries needed.

## Boost Accessory Overview



1. Eject button
2. Low battery indicator light
3. On/Off switch
4. Prime button
5. Inlet tube channel  
(left or right tube locking)
6. Discharge tube with connector
7. Power adapter port

## Safety Information

**DANGER** indicates a hazardous situation which, if not avoided, will result in death or serious injury.

**WARNING** indicates a hazardous situation which, if not avoided, could result in death or serious injury.

**CAUTION** indicates a hazardous situation which, if not avoided, could result in minor or moderate injury.

NOTICE is used to address practices not related to personal injury.

## SAFETY INSTRUCTIONS

(or equivalent) signs indicate specific safety related instructions or procedures.

**WARNING** Read these instructions carefully. Failure to follow the Installation, Operating and User-Maintenance Instructions may result in personal injury or property damage

**WARNING SHOCK HAZARD** Turn off electric power at circuit breaker or fuse box. A standard AC wall outlet must be properly installed and grounded in accordance with all local electrical codes and ordinances.

**WARNING** Battery electrolyte, if leaked from batteries, can cause respiratory, skin and severe eye irritation and ingesting it can be very harmful.

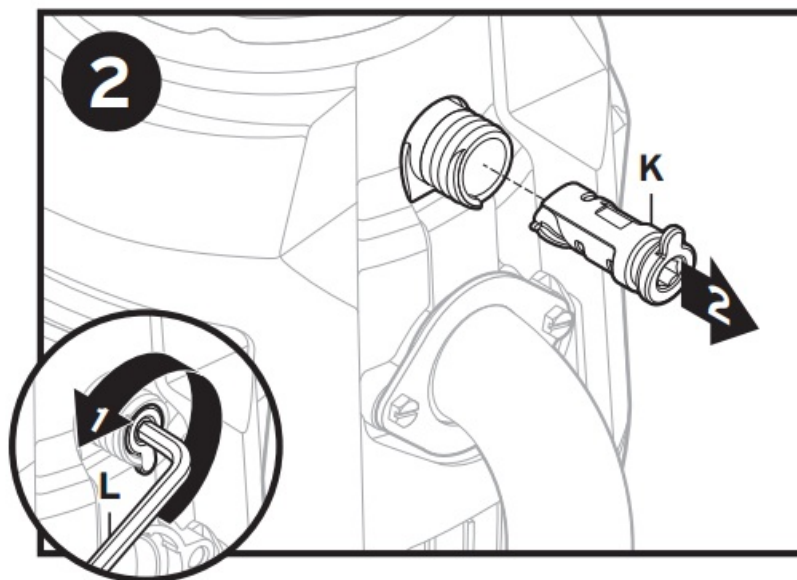
**CAUTION** Do not connect the wall adapter if batteries are installed.

## Installation

For Existing Disposers, follow this installation.

For New Disposers, complete the disposer installation through step 26, then follow this installation.

Remove Dishwasher Inlet Plug from Disposer



1. Determine if disposer inlet has knockout or if there is a plug at the end of the dishwasher inlet. If applicable, remove the knockout or plug (see disposer manual for removal instructions).

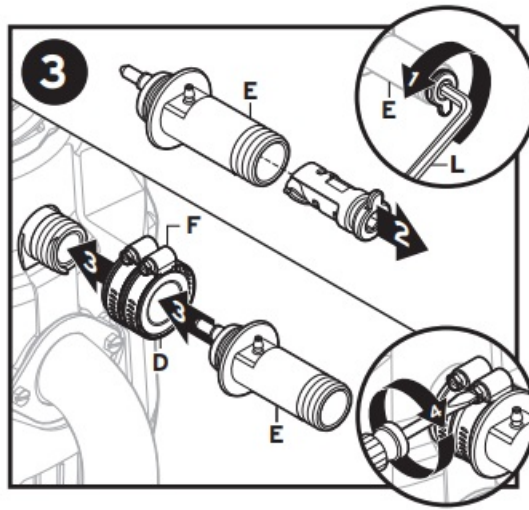
Scan QR code for disposal manuals.



2. If disposer is to be connected to a dishwasher, (K) must be removed from disposer. (1) Insert (L)\* into (K) turning 90° counter-clockwise (2) to remove.

\*A 1/4" hex wrench can be used if necessary.

Remove Dishwasher Inlet Plug from

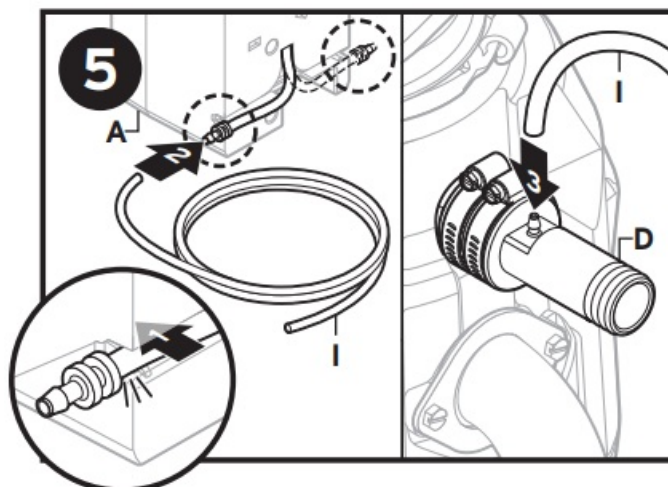
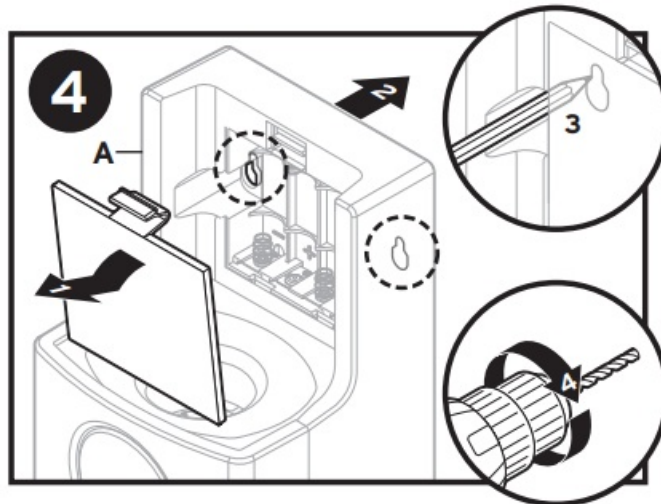


3. If disposer is to be connected to a dishwasher, the dishwasher inlet plug must also be removed from (E). (1, 2,) Insert (L)\* into (E) dishwasher inlet plug, turning 90° counter-clockwise to remove.

(3, 4) Connect (E) and (D) to dishwasher inlet using (F) x2.

\*A 1/4" hex wrench can be used if necessary.

**Note:** (E) needs to be flush with the dishwasher inlet to prevent leaks due to improper installation.



4. Press down on battery cover top tab. Pivot top of cover out and then at an upward angle remove from (A).  
If using wall mount option: Place (A) in desired location and mark screw holes. Remove (A) and drill 1/4" pilot holes at marked locations.

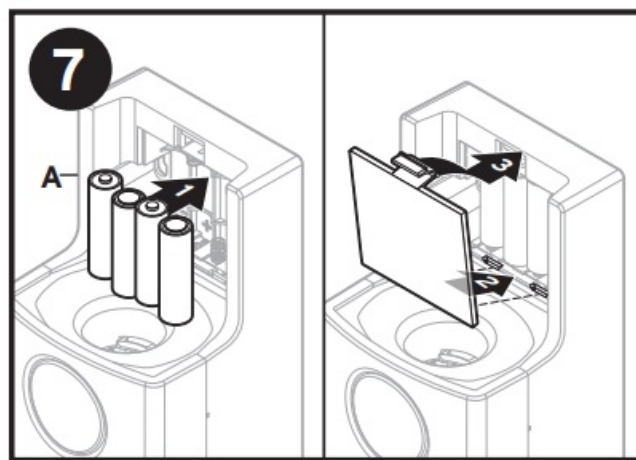
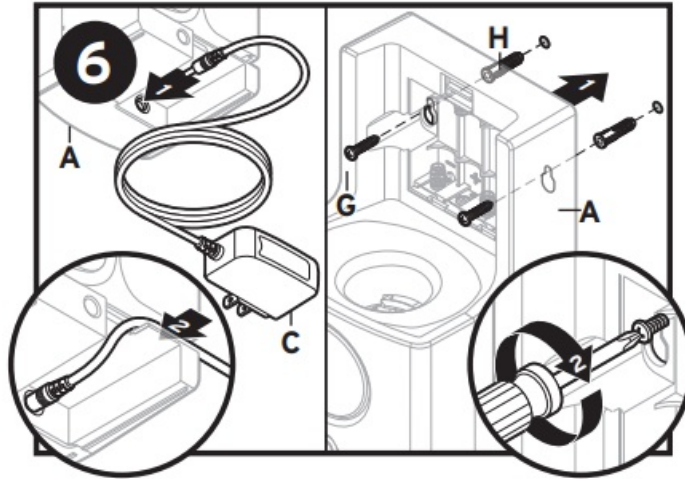
**Note:** If not mounting into drywall, drill 9/64" pilot holes for screw only mounting.

5. Press discharge tube into place on rear housing of (A). Connect (I) to discharge tube connector. Connect other



end of (I) securely to (D) as shown. Ensure there are no kinks or blockages in the hose.

**Note:** Discharge tube can exit either direction on back of (A) depending on mounting location of (A).



6. If using the wall power adapter: Plug (C) into back of (A) and insert (C) cord into remaining channel not used for tubing.

If using wall mount option: Mount (A) to wall using (G) and (H).

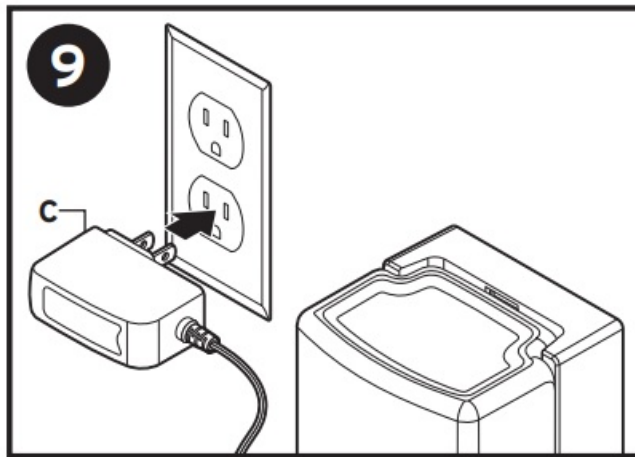
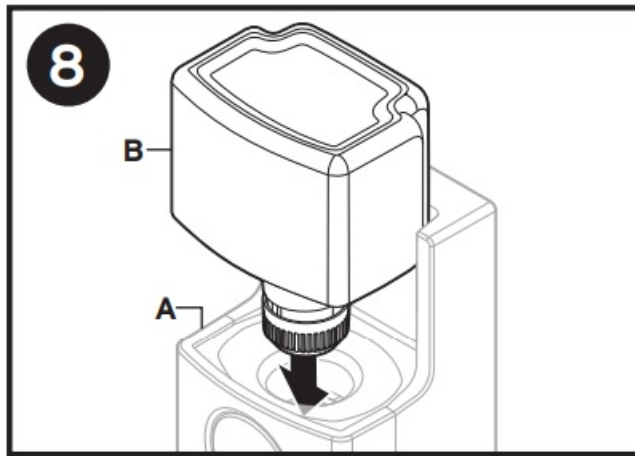
**Note:** Use only the supplied wall power adapter.

7. If using batteries: Install 4 AA alkaline batteries (not included). Reinstall battery cover to (A).

**Note:** If using batteries, do not mix old and new batteries and do not mix different brands of alkaline batteries.

Use ONLY alkaline type batteries.





8. With cap facing downward, insert (B) into (A) until the latch clicks in place. Pull bottle slightly upwards to confirm that it is locked in place.

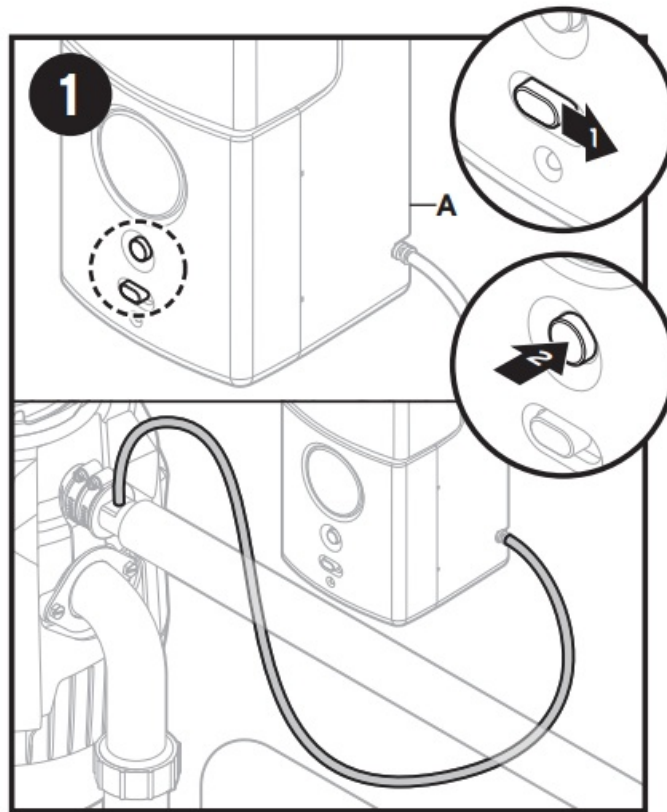
**Note:** Improper installation can lead to leaks.

9. If using (C), plug (C) into a standard AC wall outlet.

Use only the supplied wall power adapter (C).

If using 4 AA alkaline batteries (not included), skip this step.

## Initial Startup



1. Turn on (A) by sliding on/off switch to the right.

**Note:** Immediately after sliding the on/off switch to the right, one solution dispense cycle will occur.

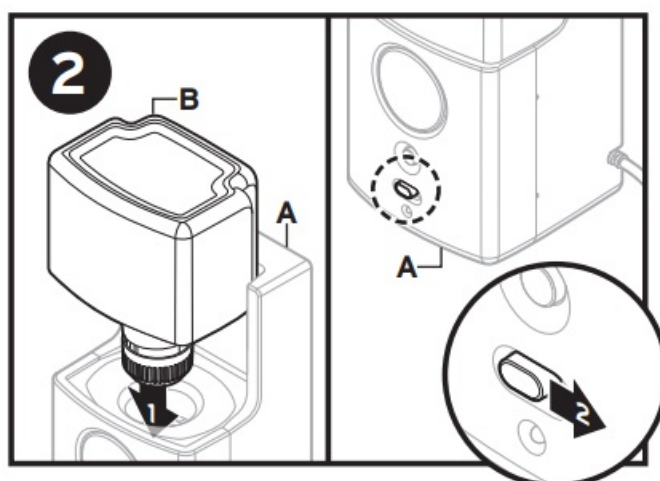
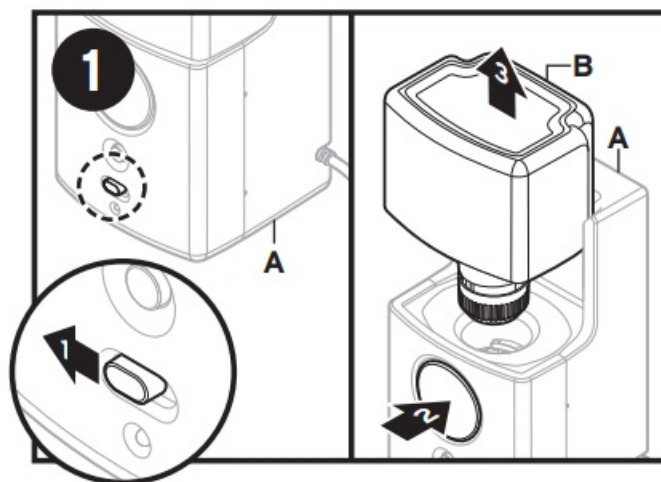
Press and release the “Prime” button to fill/prime the tube with solution.

**Note:** Each press of the “Prime” button results in a 45 second solution dispense cycle.

**Note:** Once the switch is in the “on” position and power is supplied, one solution dispense cycle will occur and then the solution will automatically be dispensed once every 12 hours.\*

If using the power adapter with a switched outlet, the solution dispense cycle will begin each time the outlet is powered “on”.

## Replacing bottle of Boost solution



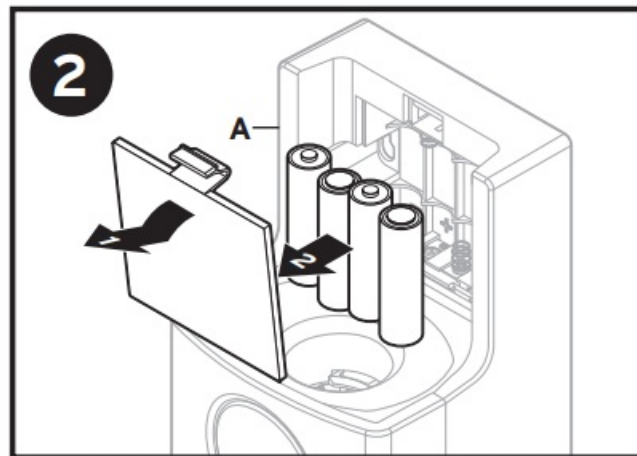
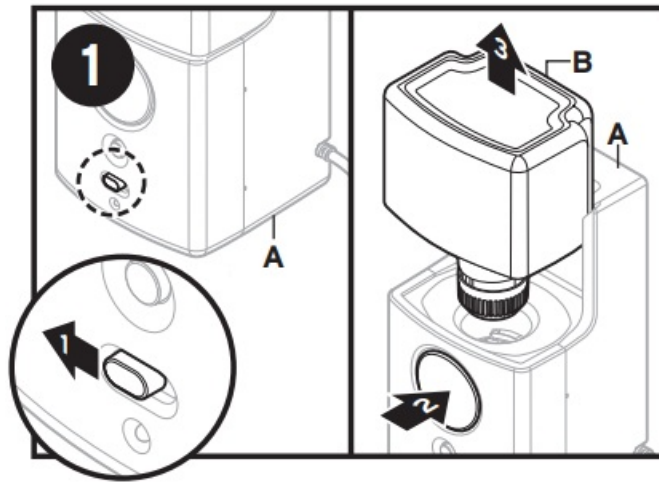
1. Turn off (A) by sliding switch to left. Push “Eject Button” on front of (A) and remove empty (B).
2. With cap facing downward, insert new (B) into (A) until the latch clicks in place. Pull bottle slightly upwards to ensure that it is locked into place.

**Note:** Improper installation may result in leaks.

Turn on (A) by sliding switch to the right.

**Note:** Unit might need to be primed again (see Initial Startup).

## Replacing Alkaline Batteries



1. When the battery power level is low, the low battery indicator light will flash. Turn off (A) by sliding switch to left. Push “Eject Button” on front of (A) and remove (B).

**Note:** Bottle should be placed right-side up during this process to prevent leaks.

Cuando el nivel de potencia de la pila es bajo, la luz indicadora de batería baja parpadeará. Apague (A) deslizando el interruptor hacia la izquierda. Presione el botón “Eject” (expulsar) en la parte frontal de (A) y retire (B).

Advertencia: durante el proceso, la botella debe colocarse hacia arriba para evitar fugas.

Lorsque la charge de la pile est faible, le témoin lumineux clignote. Couper (A) en faisant coulisser le commutateur vers la gauche. Appuyer sur le « bouton d’éjection » à l’avant de (A) et retirer (B).

Remarque : Pour éviter les fuites, placer la bouteille à l’endroit pendant cette opération.

2. Press down on battery cover top tab. Pivot top of battery cover out and then at an upward angle remove. Remove all four old alkaline batteries.

**Note:** If using batteries, do not mix old and new batteries and do not mix different brands of alkaline batteries.

Use ONLY alkaline type batteries.

Reverse removal process to install four new alkaline batteries.

## Troubleshooting

Symptom	Trouble Shooting Steps
Pump does not run. No fluid is dispensed.	<ul style="list-style-type: none"> <li>• Make sure to slide the power switch fully to the right in the “ON” position.</li> <li>• If running on wall adapter power, remove the plug from the back of the device for 20 seconds, then reseal the power plug back into the Boost device.</li> <li>• If running on battery power and low battery LED is illuminated, replace the batteries with new ones.</li> <li>• If running on battery power and low battery LED is not illuminated, remove battery door, reseal the batteries and be sure to fully close and latch the battery door.</li> </ul>
Pump can be heard running, but no fluid is dispensed into the garbage disposer.	<ul style="list-style-type: none"> <li>• Ensure Boost bottle has fluid.</li> <li>• Ensure Boost bottle is fully latched into the device.</li> <li>• Ensure tubing is fully primed. Refer to the “Initial Startup” section for more instructions.</li> <li>• Ensure tubing is secured at each connection point, not kinked, and is free from blockages.</li> <li>• Ensure the Dishwasher Inlet Adapter (DWIA) barb is free of debris.</li> <li>• Ensure Boost unit is level and not on an angle.</li> </ul>
Unit is leaking.	<ul style="list-style-type: none"> <li>• Remove bottle from device and disconnect power and contact Customer Service for more instructions.</li> </ul>
The Dishwasher Inlet Adapter is leaking.	<ul style="list-style-type: none"> <li>• If applicable, ensure that tubing from dishwasher is securely connected to the Dishwasher Inlet Adapter (DWIA).</li> <li>• Ensure hose clamps are installed and fastened correctly over the Dishwasher Inlet Sleeve (DWIS). Under-tightened hose clamps may allow the Dishwasher Inlet Adapter (DWIA) to dislodge or fluid to leak. Over-tightened hose clamps may cause excessive wear on the DWIS resulting in leaks.</li> <li>• Ensure dishwasher inlet knock-out is removed from garbage disposer. Refer to “Installation” section for more details.</li> </ul>
Unit only runs when the garbage disposer is switched on.	<ul style="list-style-type: none"> <li>• You may be using a switched outlet to power your device. See “Initial Startup” section or contact Customer Service for more information on how this can impact device performance.</li> </ul>

For any further questions or concerns about your device, contact Customer Service for assistance.

1-[800-558-5700](tel:800-558-5700) [262-233-2231](tel:262-233-2231)

## WARRANTY INFORMATION

This limited warranty is provided by InSinkErator to the original consumer owner of this InSinkErator accessory (the “InSinkErator Accessory”), and any subsequent owner of the residence in which the Accessory was originally installed. InSinkErator warrants to Customer that your InSinkErator Accessory will be free from defects in materials and workmanship, subject to the time periods and the exclusions described below. If this Accessory is sold with a Power Series, Advanced Series, Contractor Series, or PRO Series disposer, this Accessory’s warranty life shall be for the period listed with the Power Series, Advanced Series, Contractor Series, or PRO Series disposer it was sold with only, all other disposers are excluded (the “Power Series, Advanced Series, Contractor


Series, or PRO Series Disposer & Accessory Warranty Period”). If this Accessory is sold separately, this Accessory’s warranty life shall be for a period of one (1) year (the “Accessory Warranty Period”), commencing on the date of purchase where installed only on Power Series, Advanced Series, Contractor Series, or Pro Series. You will be required to show written documentation supporting your date of purchase. This limited warranty is subject to InSinkErator Accessory used by a consumer Customer for residential use only. YOUR SOLE AND EXCLUSIVE REMEDY UNDER THIS LIMITED WARRANTY SHALL BE LIMITED TO REPAIR OR REPLACEMENT OF THE INSINKERATOR ACCESSORY, PROVIDED THAT IF INSINKERATOR DETERMINES IN ITS SOLE DISCRETION THAT NEITHER REMEDY IS PRACTICABLE, INSINKERATOR MAY PROVIDE YOU A REFUND OF YOUR PURCHASE PRICE OR A CREDIT TOWARDS ANOTHER INSINKERATOR PRODUCT. This limited warranty does not extend to and expressly excludes: losses or damages or the inability to operate your InSinkErator Accessory resulting from conditions beyond the InSinkErator’s control including, without limitation, accident, alteration, misuse, abuse, neglect, negligence (other than InSinkErator’s), failure to install, maintain, assemble, or mount the InSinkErator Accessory in accordance with InSinkErator’s instructions or local electrical and plumbing codes. Wear and tear expected to occur during the normal course of use, including without limitation, cosmetic rust, scratches, dents or comparable and reasonably expected losses or damages. In addition to the above exclusions, this limited warranty does not apply to InSinkErator Accessory installed in a commercial or industrial application or Standard Series (Badger® models).

**DISCLAIMER OF WARRANTIES:** INSINKERATOR MAKES NO EXPRESS OR IMPLIED WARRANTY WHATSOEVER WITH RESPECT TO THE PRODUCT, INCLUDING BUT NOT LIMITED TO THE IMPLIED WARRANTIES OF MERCHANTABILITY AND FITNESS. No employee, agent, dealer, or other person is authorized to alter this limited warranty or make any other warranty on behalf of InSinkErator. The terms of this limited warranty shall not be modified by the InSinkErator, the original owner, or their respective successors or assigns. InSinkErator is not responsible for any charges including labor associated with using this Accessory with Standard Series (Badger platform units).

1-[800-558-5700](tel:800-558-5700) [262-233-2231](tel:262-233-2231)

®Registered trademark/TM Trademark of InSinkErator | ©2024 All rights reserved.

Documents / Resources

	<a href="#">InSinkErator BST-SG Boost Accessory</a> [pdf] Instruction Manual BST-SG, BST-PG, BST-SG Boost Accessory, BST-SG, Boost Accessory, Accessory
---	--

References

- [User Manual](#)

[Manuals+](#), [Privacy Policy](#)

This website is an independent publication and is neither affiliated with nor endorsed by any of the trademark owners. The "Bluetooth®" word mark and logos are registered trademarks owned by Bluetooth SIG, Inc. The "Wi-Fi®" word mark and logos are registered trademarks owned by the Wi-Fi Alliance. Any use of these marks on this website does not imply any affiliation with or endorsement.