



InSinkErator Badger 100 Lift and Latch Standard Series 1/3 HP Continuous Feed Garbage Disposal User Manual

[Home](#) » [InSinkErator](#) » InSinkErator Badger 100 Lift and Latch Standard Series 1/3 HP Continuous Feed Garbage Disposal User Manual 

Contents

- [1 Badger 100 Lift and Latch Standard Series 1/3 HP Continuous Feed Garbage Disposal](#)
- [2 Product Information](#)
- [3 Product Usage Instructions](#)
- [4 Includes](#)
- [5 Tools and Materials](#)
- [6 Dimensions](#)
- [7 Before You Begin](#)
- [8 Removal of old disposer](#)
- [9 INSTRUCTIONS PERTAINING TO RISK OF FIRE, ELECTRIC SHOCK, INJURY TO PERSONS OR DAMAGE TO PROPERTY](#)
 - [9.1 IMPORTANT SAFETY INSTRUCTIONS](#)
- [10 GROUNDING INSTRUCTIONS](#)
- [11 OPERATING INSTRUCTIONS](#)
- [12 USER MAINTENANCE INSTRUCTIONS](#)
- [13 IN-HOME FULL-SERVICE LIMITED WARRANTY BADGER® 1, BADGER® 1XL, BADGER® 100 – 1 YEAR
BADGER® 5, BADGER® 5XL, BADGER® 500 – 3 YEARS](#)
- [14 Documents / Resources](#)
 - [14.1 References](#)
- [15 Related Posts](#)



Badger 100 Lift and Latch Standard Series 1/3 HP Continuous Feed Garbage Disposal



Product Information

The product being referred to in this user manual is a garbage disposal unit manufactured by InSinkErator. The unit comes with a Lift & Latch mechanism that allows for easy installation and removal. The package includes a fiber gasket, backup flange, mounting ring, screws, disposer, discharge tube, gasket, flange, bolts, and wire nuts. The product dimensions are 11-1/2 inches by 6-5/16 inches by 6 inches.

Product Usage Instructions

1. Read all the instructions carefully before beginning the installation process. Failure to follow the instructions may result in personal injury or property damage.
2. If you are replacing an existing disposer, skip to step 2. If there is no existing disposer, disconnect sink drain and move to step 9.
3. Turn off electrical power at circuit breaker or fuse box to avoid any shock hazards.
4. Support the disposer and insert the end of the wrenchette into the right side of the mounting lug. Turn the wrenchette to remove the old disposer.
5. Flip the disposer over and remove the electrical cover plate. Save cable connector if applicable. Disconnect the disposer wires from the electrical supply.
6. If the new disposer mounting is the same as the old one, skip to step 15. If not, continue to step 7.
7. Using a screwdriver, remove the snap ring (G).
8. Remove the old sink flange and plumber's putty from around it.
9. Apply a half-inch thick rope of plumber's putty evenly around the sink flange (B).
10. Press the sink flange (B) firmly into the sink drain and remove excess putty.
11. Insert fiber gasket (C), backup flange (D), and mounting ring (E). Hold them in place while inserting snap ring (G). Pull snap ring (G) open and press firmly until it snaps into place.

12. Tighten the 3 mounting screws (F) evenly and firmly against the backup flange.
13. If you are connecting a dishwasher, remove the drain plug in step 15.
14. Connect the disposer wires to the electrical supply if not already done. If connecting a dishwasher, connect its drain hose to the disposer.
15. Turn on the electrical power at the circuit breaker or fuse box.

DANGER: situation which, if not avoided, will result in death or serious injury.

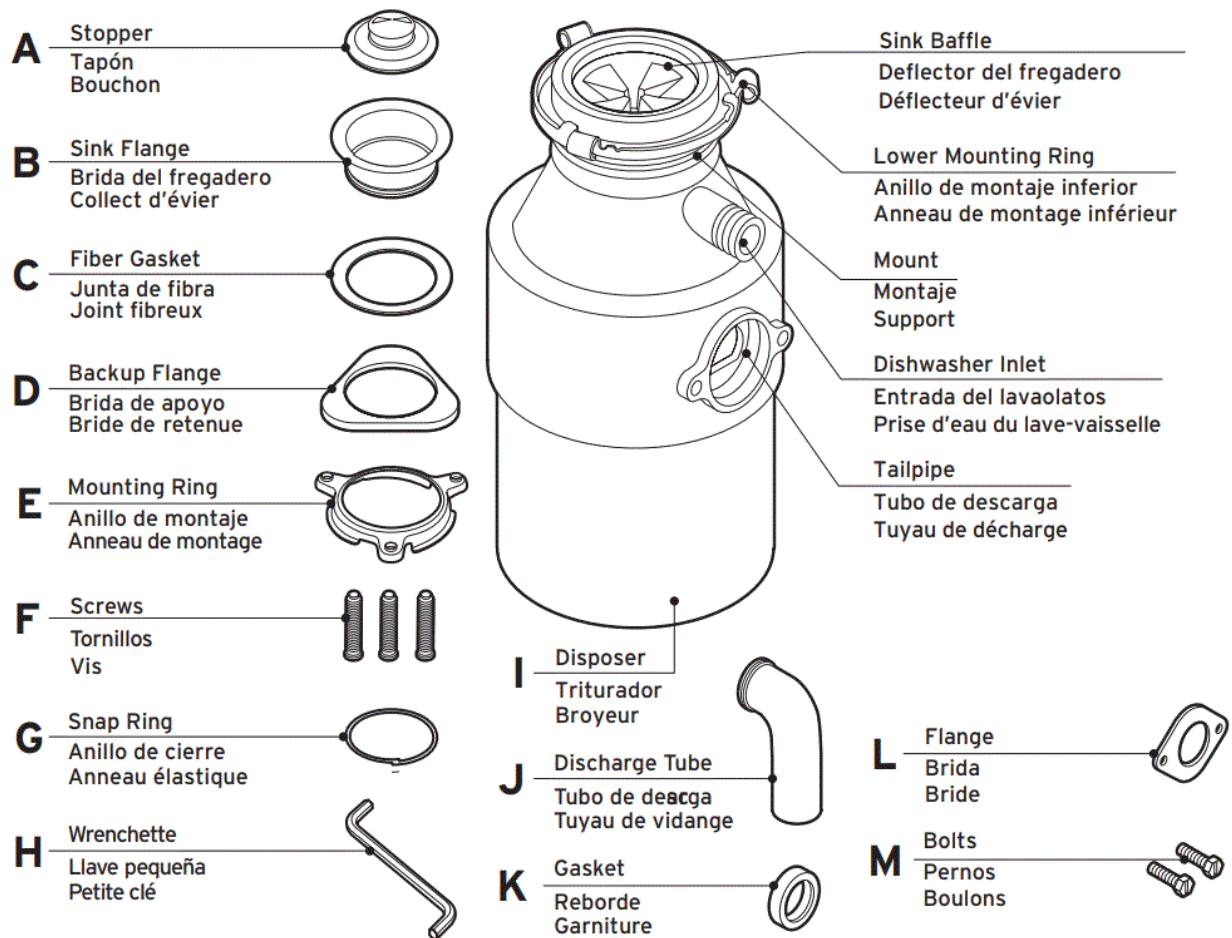
WARNING indicates a hazardous situation which, if not avoided, could result in death or serious injury.

CAUTION indicates a hazardous situation which, if not avoided, could result in minor or moderate injury.

NOTICE is used to address practices not related to personal injury.

SAFETY INSTRUCTIONS: (or equivalent) signs indicate specific safetyrelated instructions or procedures.

Includes

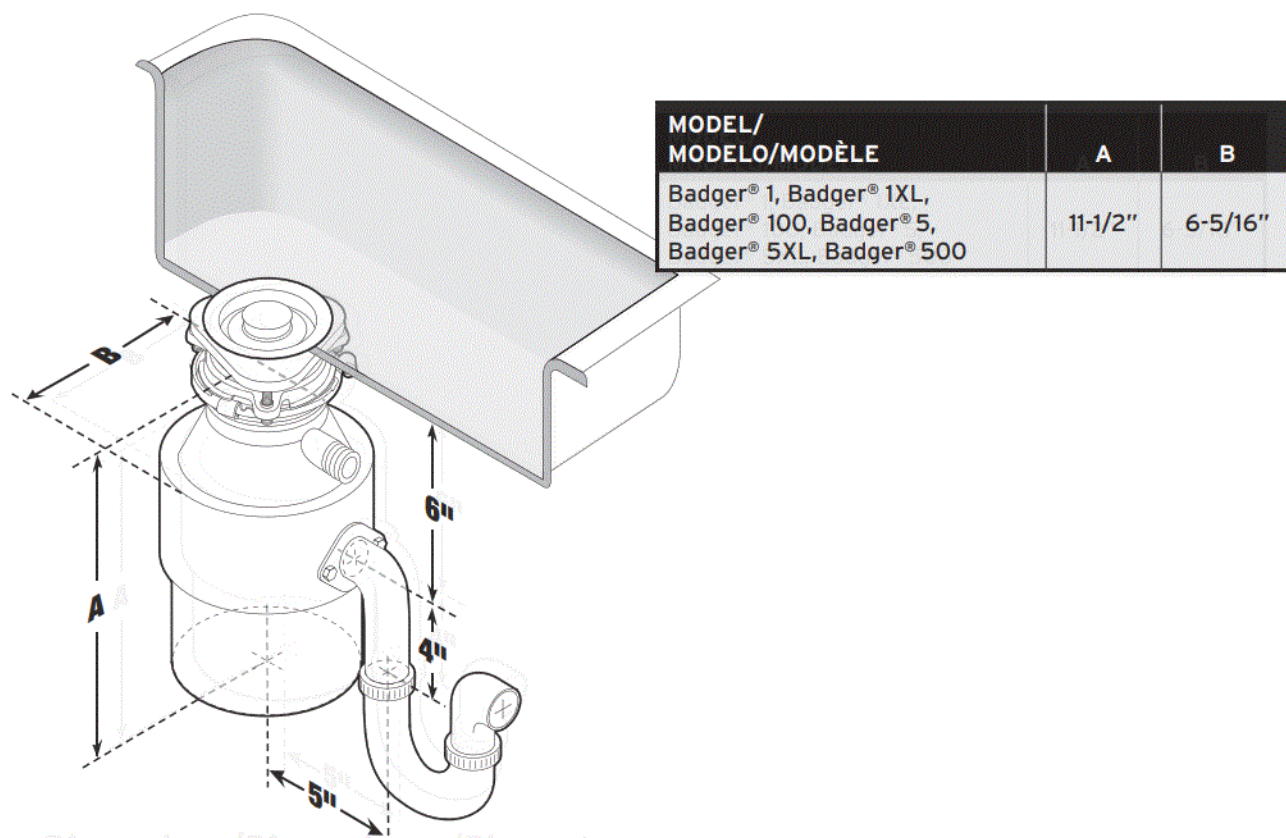


Tools and Materials



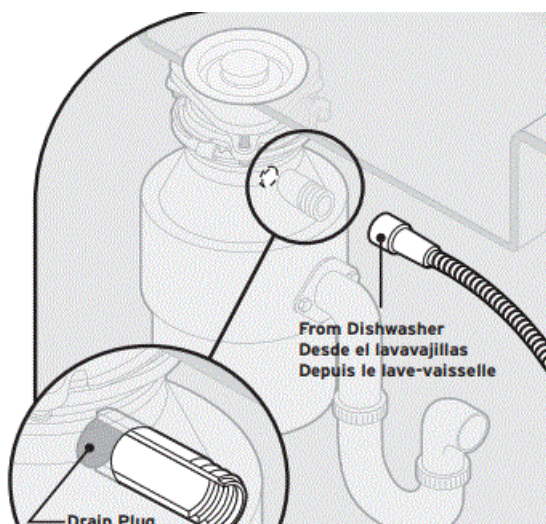
WARNING: Read these instructions carefully. Failure to follow the Installation, Operating and User-Maintenance Instructions may result in personal injury or property damage.

Dimensions



Before You Begin

IMPORTANT: If connecting a dishwasher, drain plug **MUST** be removed. See step 15.

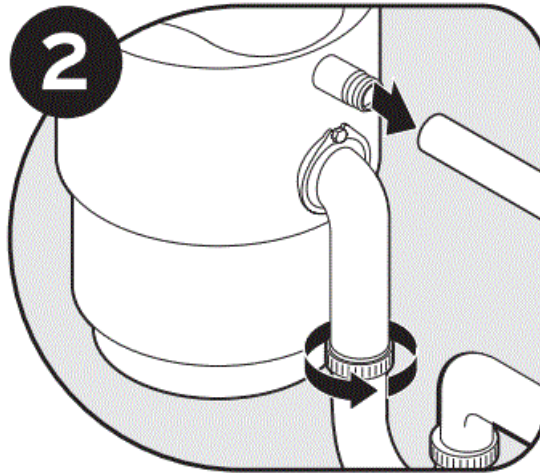


Removal of old disposer

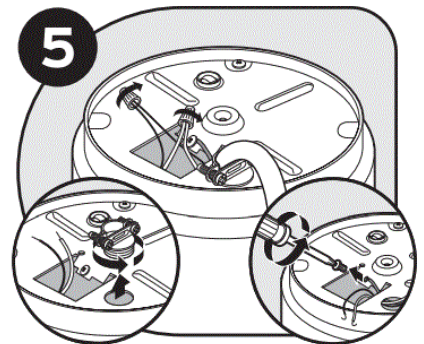
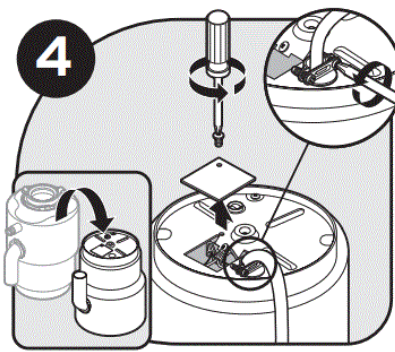
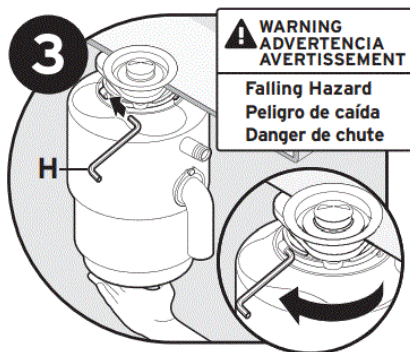
WARNING:SHOCK HAZARD Turn off electrical power at circuit breaker or fuse box.

1. If you are replacing an existing disposer, continue to Step 2. If there is no existing disposer, disconnect sink drain and skip to Step 9.

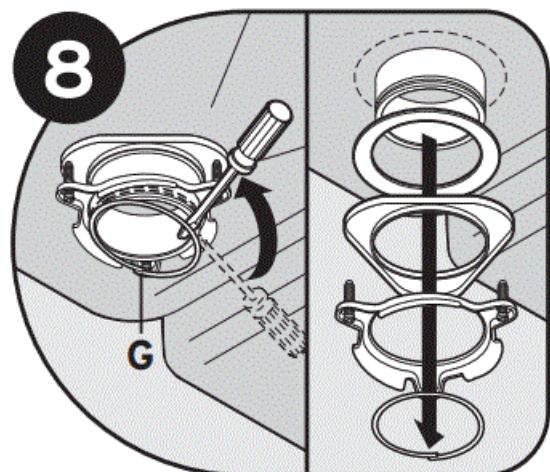
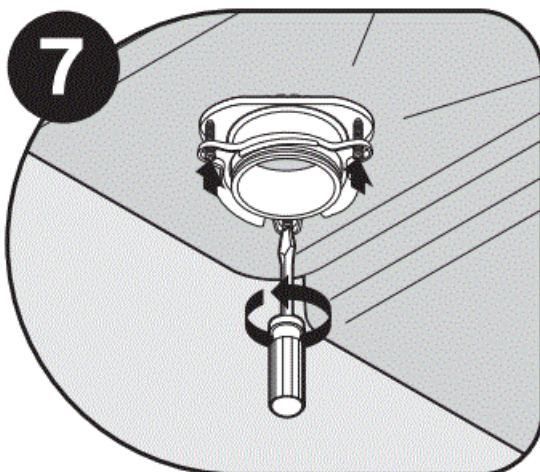
2. Turn off electrical power at circuit breaker or fuse box. Disconnect drain trap from waste discharge tube. Disconnect dish-washer if connected to the disposer.



3. **WARNING:** Falling Hazard. Support disposer, insert end of wrenchette (H) into right side of mounting lug, and turn. Disposer will fall free.
4. Flip disposer over and remove electrical cover plate. Save cable connector if applicable.
5. Disconnect the disposer wires from the electrical supply.
6. Is the new disposer mounting the same as the old one? If YES, you may choose to skip to step 15. If NO, continue to step 7.



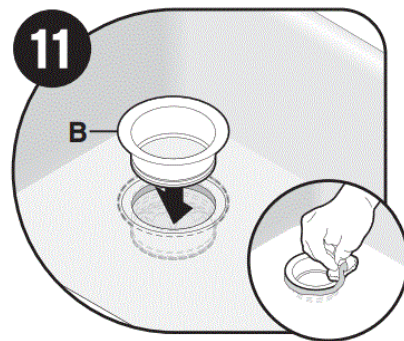
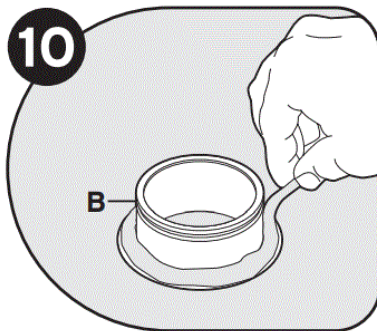
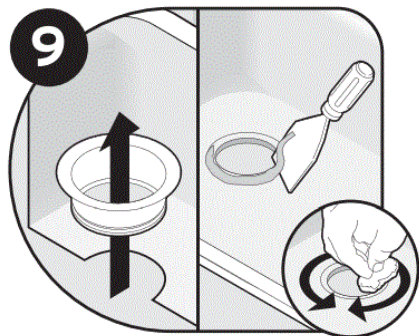
7. Using a flathead screwdriver, loosen the 3 screws on the mounting assembly.



8. Using a screwdriver, remove the snap ring (G).

Install flange in sink hole

9. Remove flange from sink. Remove old plumber's putty from sink with putty knife.
10. Evenly apply 1/2" thick rope of plumber's putty around sink flange (B).



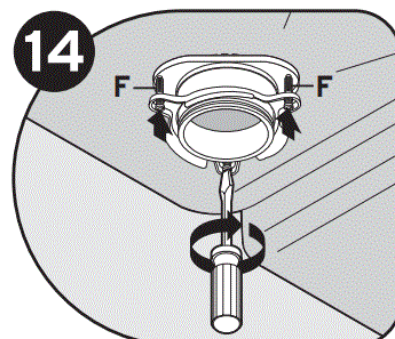
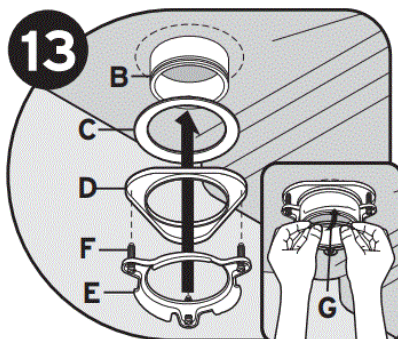
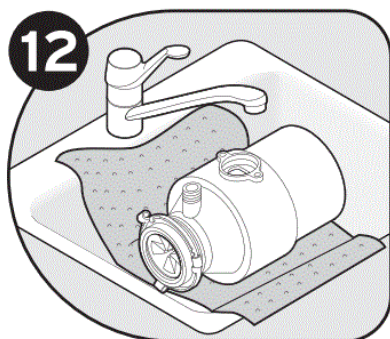
11. Press sink flange (B) firmly into sink drain. Remove excess putty.

NOTICE: Property Damage: Risk of long/short term water leakage if not properly assembled.

Attach upper mounting assembly

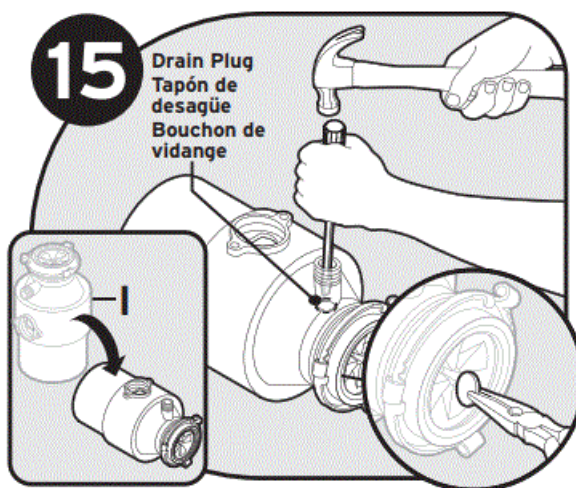
12. Place a weight, such as the disposer, on the sink flange to hold it in place. Use a towel to avoid scratching sink.

13. Insert fiber gasket (C), backup flange (D) and mounting ring (E). Hold in place while inserting snap ring (G). Pull snap ring (G) open and press firmly until it snaps into place.



14. Tighten 3 mounting screws (F) evenly and firmly against backup flange.

Attach upper mounting assembly



15. **STOP!** If connecting a dishwasher, remove drain plug in step 15.

NOTICE: Drain plug cannot be replaced once it is knocked out. Turn disposer (J) onto side and knock out drain plug with screwdriver. Remove plug from inside of disposer with pliers.

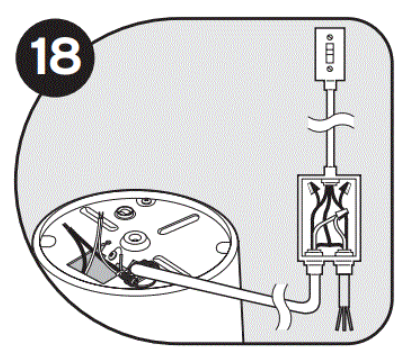
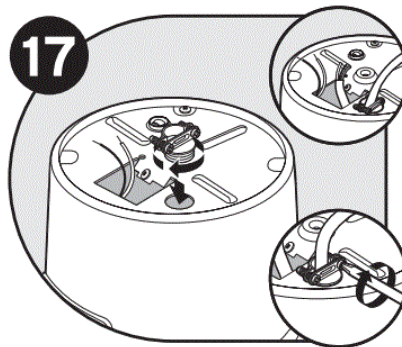
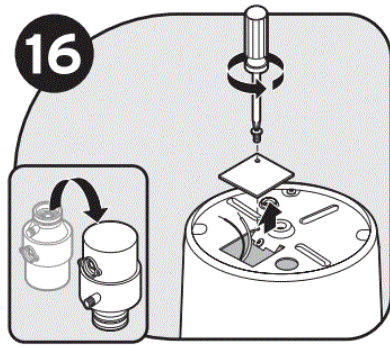
IMPORTANT: Dishwasher connection

If the dishwasher connection is made without removing the plug, the dishwasher may overflow.

16. **Connect disposer to electrical supply** Turn disposer over and remove electrical cover plate. Pull out wires.

17. Insert cable connector (not included) and run electrical cable through access hole on bottom of disposer.

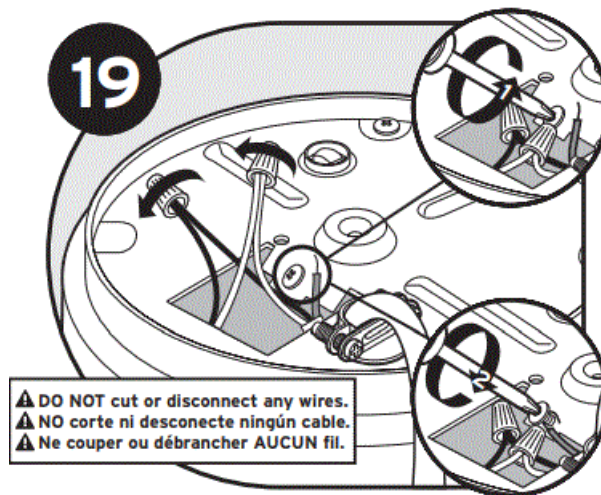
Tighten cable connector.



18. This disposer requires a switch with a marked "Off" position (wired to disconnect all ungrounded supply conductors) installed within sight of the disposer sink opening (1 hp minimum rating).

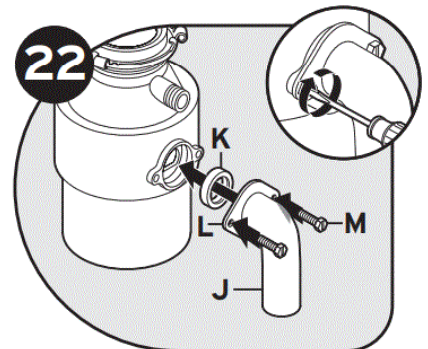
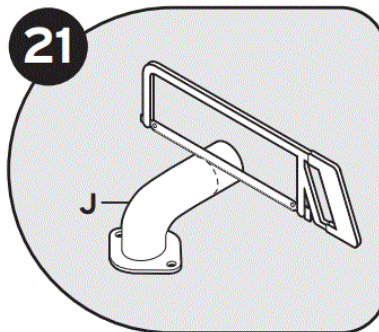
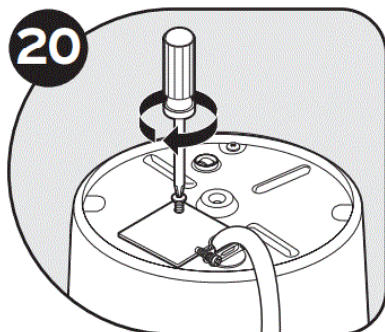
WARNING: improper grounding can result in electric shock hazard.

19. Connect white wire from disposer to neutral (white) wire from power source. Connect black wire from disposer to hot (black, red) wire from power source with wire nuts (not included). Connect ground wire to green grounding screw. Unit must be grounded for safe and proper installation.



20. **Connect disposer to electrical supply** Push wires into disposer and replace electrical cover plate.

21. You may need to trim discharge tube (J) to ensure proper fit.



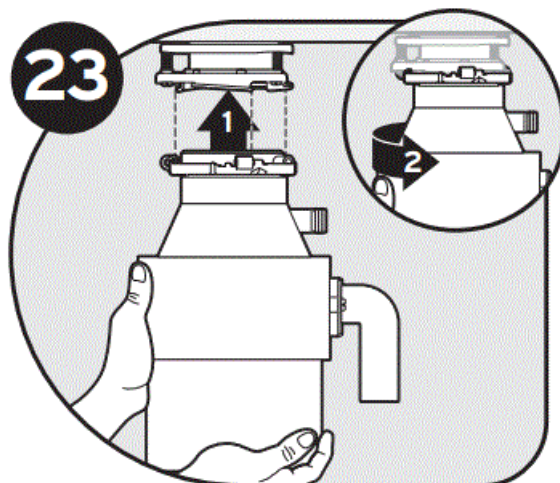
22. Slide flange (L) over discharge tube (J). Insert gasket (K) into discharge outlet. Secure flange and discharge tube to disposer with two bolts (M). Although the supplied discharge tube is preferred, a straight discharge tube may be used.

NOTICE: Property Damage Risk: Do not remove or displace motor compartment insulation shield.

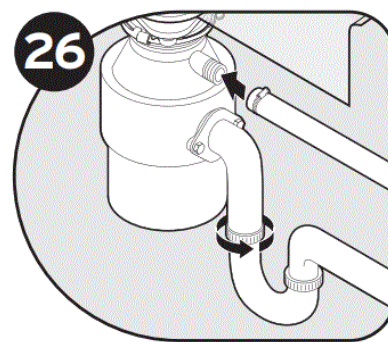
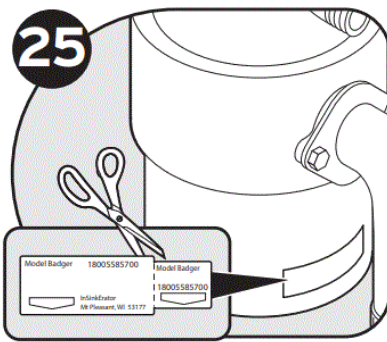
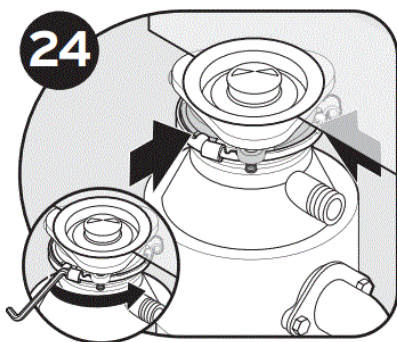
23. **connect disposer to mounting assembly with Lift & Latch™** Lifting disposer from the bottom (1), hang disposer by aligning 3 mounting tabs with slide-up ramps on mounting ring and (2) slightly turn disposer clockwise.

WARNING: do not position your head or body under disposer; unit could fall during removal or installation.

NOTICE: Property Damage: Risk of long/short term water leakage if all three mounting tabs are not properly engaged on all slide-up ramps and locked in place past the ridges.



Connect disposer to mounting assembly with Lift & Latch™



24. Turn mounting ring until all 3 mounting tabs latch over the ridges on the slide-up ramps.

25. Detach removable portion of spec label and place on a visible location.

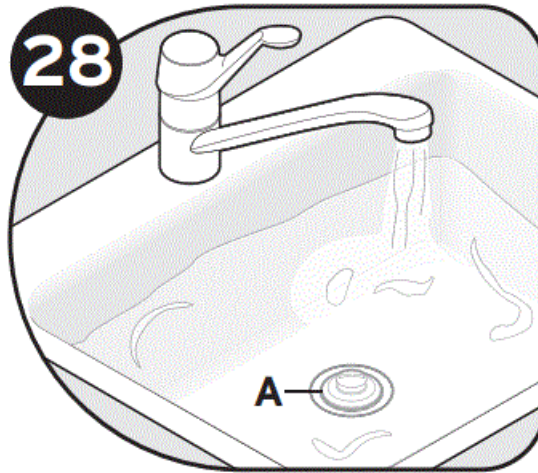
26. Reconnect plumbing (and dishwasher connection if used).

CAUTION: To avoid leaks and/or potential falling hazard, make sure all 3 mounting tabs are latched over ridges.

27. NOTICE: Property Damage: Risk of long/short term water leakage if not properly assembled.

You may need to trim tube for proper fit. To reduce the potential of leaking, the drain line must be properly pitched (not less than 1/4" of pitch per foot of run) from the disposer to the drain connection, with the drain connection being lower than the disposer discharge. Failure to do so could lead to premature corrosion or leaking due to standing water left in the disposer.

28. Insert stopper (A) into sink opening. Fill sink with water, then test for leaks. Reconnect electrical power at fuse box or circuit breaker box.



INSTRUCTIONS PERTAINING TO RISK OF FIRE, ELECTRIC SHOCK, INJURY TO PERSONS OR DAMAGE TO PROPERTY

IMPORTANT SAFETY INSTRUCTIONS

WARNING: Personal Injury: Do not position your head or body under disposer; unit could fall during removal or installation.

GROUNDING INSTRUCTIONS

For all grounded, cord-connected disposers:

This disposer must be grounded to reduce the risk of electric shock in the event of a malfunction or breakdown. Grounding provides a path of least resistance for electric current. If your disposer did not include a factory installed power cord, use a cord having an equipment-grounding conductor and a grounding plug. (InSinkErator power cord accessory CRD-00 recommended.) The plug must be plugged into an outlet that is properly installed and grounded in accordance with all local codes and ordinances.

For permanently connected disposers:

This disposer must be connected to a grounded, metal, permanent wiring system; or an equipment-grounding conductor must be run with the circuit conductors and connected to the equipment-grounding terminal or lead on the disposer.

WARNING:

Improper connection of the equipment-grounding conductor can result in a risk of electric shock. Check with a qualified electrician or serviceman if you are in doubt as to whether the disposer is properly grounded. If the plug you are using does not fit the outlet, do not modify the plug or attempt to force the plug into the outlet – have a proper outlet installed by a qualified electrician.

- This disposer must be properly grounded.
- Do not attach ground wire to gas supply line.
- Disconnect power before installing or servicing disposer.
- If three-prong grounded plug is used, plug must be inserted into three-hole grounded receptacle.
- All wiring must comply with local electrical codes.
- Do not reconnect electrical current at main service panel until proper grounds are installed.

NOTICE: Do not use plumber's putty on any other disposer connection other than sink flange. Do not use thread

sealants or pipe dope. These may harm disposer and cause property damage.

WARNING When using electric appliances, basic precautions are always to be followed, including:

- Read all instructions before using the appliance.
- To reduce the risk of injury, close supervision is required when an appliance is used near children.
- Do not put fingers or hands into a waste disposer.
- Turn the power switch to the off position before attempting to clear a jam, removing an object from the disposer or pressing reset button.
- When attempting to loosen a jam in a waste disposer, use the self-service wrenchette.
- When attempting to remove objects from a waste disposer, use long-handled tongs or pliers.
- Do not put the following into a disposer: clam or oyster shells, caustic drain cleaners or similar products, glass, china, or plastic, metal (such as bottle caps, steel shot, tin cans, or utensils), hot grease or other hot liquids.
- When not operating a disposer, leave the stopper in place to reduce the risk of objects falling into the disposer.
- This product is designed to dispose of normal household food waste; inserting materials other than food waste into disposer could cause personal injury and/or property damage.
- To reduce the risk of injury and/or property damage, do not use the sink containing the disposer for purposes other than food preparation (such as baby bathing or washing hair).
- Do not dispose of the following in the disposer: paints, solvents, household cleaners and chemicals, automotive fluids, plastic wrap.
- FIRE HAZARD: Do not store flammable items such as rags, paper or aerosol cans near disposer. Do not store or use gasoline or other flammable vapors and liquids in vicinity of disposer.
- LEAK HAZARD: Regularly inspect disposer and plumbing fittings for leaks, which can cause property damage and could result in personal injury.

SAVE THESE INSTRUCTIONS

OPERATING INSTRUCTIONS

1. Remove stopper from sink opening and run cold water.
2. Turn on disposer.
3. Slowly insert food waste into disposer. **WARNING!** Position stopper to minimize possible ejection of material while grinding.
4. After grinding is complete, turn disposer off and run water for a few seconds to flush drain line.

DO...

- First turn on cold water and then turn on the disposer. Continue running cold water for several seconds after grinding is completed to flush the drain line.
- Grind hard materials such as small bones, fruit pits, and ice. A scouring action is created by the particles inside the grind chamber.
- Grind peelings from citrus fruits to freshen up drain smells.
- Use a disposer cleaner, degreaser, or deodorizer as necessary to relieve objectionable odors caused by grease build-up.

NOTICE: Failure to flush the disposer properly may result in damage to the disposer and/or property damage.

DON'T...

- DON'T POUR GREASE OR FAT DOWN YOUR DISPOSER OR ANY DRAIN. IT CAN BUILD UP IN PIPES AND CAUSE DRAIN BLOCKAGES. PUT GREASE IN A JAR OR CAN AND DISPOSE IN THE TRASH.
- Don't use hot water when grinding food waste. It is OK to drain hot water into the disposer between grinding periods.
- Don't fill disposer with a lot of vegetable peels all at once. Instead, turn the water and disposer on first and then feed the peels in gradually.
- Don't grind large amounts of egg shells or fibrous materials like corn husks, artichokes, etc., to avoid possible drain blockage.
- Don't turn off disposer until grinding is completed and only sound of motor and water is heard.

USER MAINTENANCE INSTRUCTIONS

CLEANING DISPOSER

Over time, food particles may accumulate in the grind chamber and baffle. An odor from the disposer is usually a sign of food buildup. To clean disposer:

1. Place stopper in sink opening and fill sink halfway with warm water.
2. Mix 1/4 cup baking soda with water. Turn disposer on and remove stopper from sink at same time to wash away loose particles.

RELEASING DISPOSER JAM

If motor stops while disposer is operating, disposer may be jammed. To release jam:

1. Turn off disposer and water.
2. Insert one end of self-service Jam-Buster™ Wrench into center hole on bottom of disposer (see Figure A). Work Jam-Buster™ Wrench back and forth until it turns one full revolution. Remove Jam-Buster™ Wrench.
3. Reach into disposer with tongs and remove object(s). Allow disposer motor to cool for 3 – 5 minutes, then lightly push red reset button on disposer bottom (see Figure B). (If motor remains inoperative, check service panel for tripped circuit breakers or blown fuses.)

Figure A

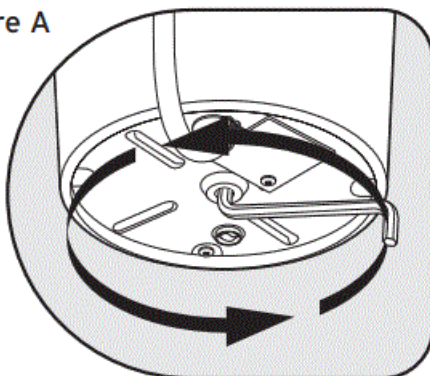
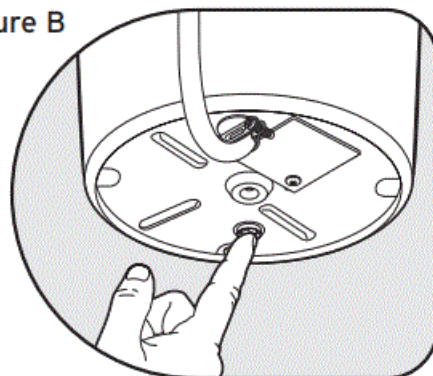


Figure B



IN-HOME FULL-SERVICE LIMITED WARRANTY BADGER® 1, BADGER® 1XL, BADGER® 100 – 1 YEAR BADGER® 5, BADGER® 5XL, BADGER® 500 – 3 YEARS

This limited warranty is provided by InSinkErator®, a business unit of Emerson Electric Co., (“InSinkErator” or “Manufacturer” or “we” or “our” or “us”) to the original consumer owner of the InSinkErator product with which this limited warranty is provided (the “InSinkErator Product”), and any subsequent owner of the residence in which the Product was originally installed (“Customer” or “you” or “your”).

InSinkErator warrants to Customer that your InSinkErator Product will be free from defects in materials and workmanship, subject to the exclusions described below, for the warranty period, commencing on the later of: (a) the date your InSinkErator Product is originally installed, (b) the date of purchase, or (c) the date of manufacture as identified by your InSinkErator Product serial number. You will be required to show written documentation supporting (a) or (b). If you are unable to provide documentation supporting either (a) or (b), the Warranty Period commencement date will be determined by Manufacturer, in its sole and absolute discretion, based upon your InSinkErator Product serial number.

What is Covered

This limited warranty covers defects in materials or workmanship, subject to the exclusions below, in InSinkErator Products used by a consumer Customer for residential use only, and includes all replacement parts and labor costs. YOUR SOLE AND EXCLUSIVE REMEDY UNDER THIS LIMITED WARRANTY SHALL BE LIMITED TO REPAIR OR REPLACEMENT OF THE INSINKERATOR PRODUCT, PROVIDED THAT IF WE DETERMINE IN OUR SOLE DISCRETION THAT NEITHER REMEDY IS PRACTICABLE, WE MAY PROVIDE YOU A REFUND OF YOUR PURCHASE PRICE OR A CREDIT TOWARDS ANOTHER INSINKERATOR PRODUCT.

What is not Covered

This limited warranty does not extend to and expressly excludes:

- Losses or damages or the inability to operate your InSinkErator Product resulting from conditions beyond the Manufacturer’s control including, without limitation, accident, alteration, misuse, abuse, neglect, negligence (other than Manufacturer’s), failure to install, maintain, assemble, or mount the InSinkErator Product in accordance with Manufacturer’s instructions or local electrical and plumbing codes.
- Wear and tear expected to occur during the normal course of use, including without limitation, cosmetic rust, scratches, dents or comparable and reasonably expected losses or damages.
- In addition to the above exclusions, this limited warranty does not apply to InSinkErator Products installed in a commercial or industrial application.
- No Other Express Warranty Applies
- This limited warranty is the sole and exclusive warranty provided to the Customer identified above. No other express warranty, written or verbal, applies. No employee, agent, dealer, or other person is authorized to alter this limited warranty or make any other warranty on behalf of Manufacturer. The terms of this limited warranty shall not be modified by the Manufacturer, the original owner, or their respective successors or assigns.

What we will do to Correct Problems

If your InSinkErator Product does not operate in accordance with the documentation provided to you, or you have questions concerning your InSinkErator Product or how to determine when service is needed, please call the toll free InSinkErator AnswerLine® at 1 (800) 558-5700, or visit our website at www.insinkerator.com. You may also notify us at: InSinkErator Service Center, 4700 21st Street, Racine, Wisconsin 53406 USA.

The following information must be provided as part of your warranty claim: your name, address, phone number, your InSinkErator Product model and serial number, and if necessary, upon request, written confirmation of either: (a) the date shown on your installation receipt, or (b) the date shown on your purchase receipt.

Manufacturer or its authorized service representative will determine, in its sole and absolute discretion, if your InSinkErator Product is covered under this limited warranty. You will be given the contact information for your closest authorized InSinkErator Service Center. Please contact your InSinkErator Service Center directly to receive in home warranty repair or replacement service. Only an authorized InSinkErator service representative may provide warranty service. InSinkErator is not responsible for warranty claims arising from work performed on

your InSinkErator Product by anyone other than an authorized InSinkErator service representative. If a covered claim is made during the Warranty Period, Manufacturer will, through its authorized service representative, either repair or replace your InSinkErator Product. Cost of replacement parts or a new InSinkErator Product, and cost of labor for repair or installation of the replacement InSinkErator Product are provided at no cost to you. Repair or replacement shall be determined by Manufacturer or its authorized service representative in their sole discretion. All repair and replacement services will be provided to you at your home. If Manufacturer determines that your InSinkErator Product must be replaced rather than repaired, the limited warranty on the replacement InSinkErator Product will be limited to the unexpired term remaining in the original Warranty Period.

This disposer is covered by Manufacturer's limited warranty. This limited warranty is void if you attempt to repair the InSinkErator Product. For service information, please visit www.insinkerator.com or call, toll free, 1-800-558-5700.

Limitation of Liability

TO THE EXTENT PERMITTED BY LAW, IN NO EVENT SHALL MANUFACTURER OR ITS AUTHORIZED SERVICE REPRESENTATIVES BE LIABLE FOR ANY INCIDENTAL, SPECIAL, INDIRECT, OR CONSEQUENTIAL DAMAGES, INCLUDING ANY ECONOMIC LOSS, WHETHER RESULTING FROM NONPERFORMANCE, USE, MISUSE OR INABILITY TO USE THE INSINKERATOR PRODUCT OR THE MANUFACTURER'S OR ITS AUTHORIZED SERVICE REPRESENTATIVE'S NEGLIGENCE. MANUFACTURER SHALL NOT BE LIABLE FOR DAMAGES CAUSED BY DELAY IN PERFORMANCE AND IN NO EVENT, REGARDLESS OF THE FORM OF THE CLAIM OR CAUSE OF ACTION (WHETHER BASED IN CONTRACT, INFRINGEMENT, NEGLIGENCE, STRICT LIABILITY, OTHER TORT OR OTHERWISE), SHALL MANUFACTURER'S LIABILITY TO YOU EXCEED THE PRICE PAID BY THE ORIGINAL OWNER FOR THE INSINKERATOR PRODUCT.

The term "consequential" damages shall include, but not be limited to, loss of anticipated profits, business interruption, loss of use or revenue, cost of capital or loss or damage to property or equipment.

Some states do not allow the exclusion or limitation of incidental or consequential damages, so the above limitation may not apply to you. This limited warranty gives you specific legal rights and you may also have other rights which vary from state to state.

Food waste is roughly 80% water. By using your disposal regularly, you can help divert food waste from landfills and reduce greenhouse gas emissions. Make sustainability a family affair by using your disposal. After all, the smallest changes can make the biggest impact.

For U.S. www.insinkerator.com/green

For Canada www.insinkerator.ca

InSinkErator® may make improvements and/or changes in the specifications at any time, in its sole discretion, without notice or obligation and further reserves the right to change or discontinue models.

The mounting collar configuration is a trademark of Emerson Electric Co.

The Emerson logo is a trademark and service mark of Emerson Electric Co. Printed in U.S.A. © 2021 InSinkErator, a business unit of Emerson Electric Co. All Rights

1-800-558-5700 ®Registered trademark/TM Trademark of Insinkerator © 2022 All rights reserved.

www.insinkerator.com

Documents / Resources



[InSinkErator Badger 100 Lift and Latch Standard Series 1/3 HP Continuous Feed Garbage Disposal](#) [pdf] User Manual

Badger 100 Lift and Latch Standard Series 1, 3 HP Continuous Feed Garbage Disposal, Badger 100, Lift and Latch Standard Series 1 3 HP Continuous Feed Garbage Disposal, 3 HP Continuous Feed Garbage Disposal, Feed Garbage Disposal

References

- [sink | Leader in Garburators and Hot Water | InSinkErator CA](#)
- [sink | Garbage Disposals | Instant Hot Water Dispensers | InSinkErator US](#)
- [sink | Environment: Food Waste Diversion | InSinkErator | InSinkErator US](#)

Manuals+.