

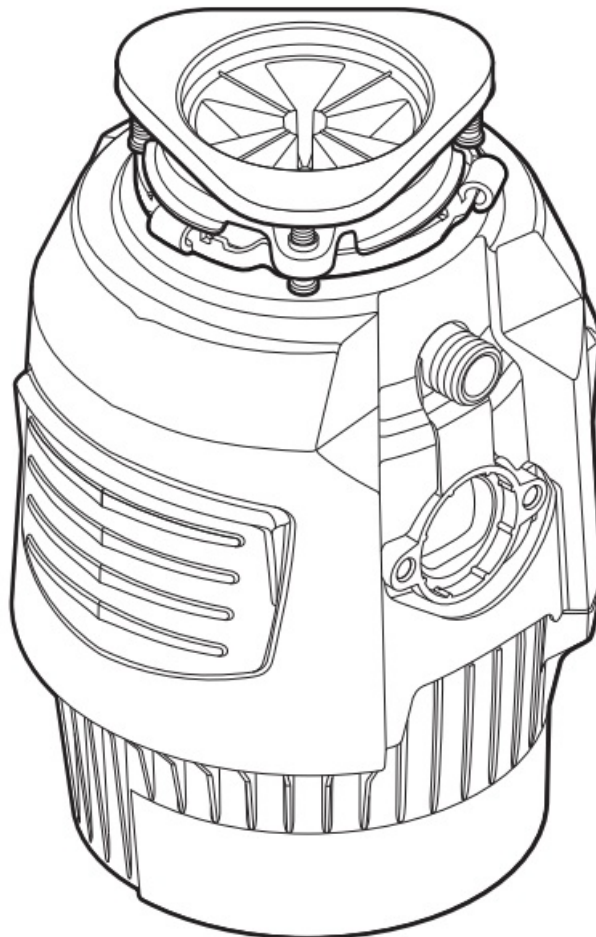


## Insinkerator 79841-ISE Evolution Compact Garbage Instruction Manual

[Home](#) » [InSinkErator](#) » Insinkerator 79841-ISE Evolution Compact Garbage Instruction Manual 



**Garbage Disposal  
Installation Instructions**





1-800-558-5700



262-233-2231

## Contents

- 1 79841-ISE Evolution Compact Garbage
- 2 Dimensions
- 3 Tools and Materials Needed (Not Included)
- 4 Includes
- 5 Safety Information
- 6 Remove Existing Disposer
- 7 Remove Current Mounting Assembly
- 8 Install Sink Flange
- 9 Attach Mounting Assembly
- 10 Connect Electrical Supply (Corded)
- 11 Connect the Electrical Supply (Hardwire)
- 12 Connect the Electrical Supply (Hardwire)
- 13 Connect Plumbing
- 14 Connect Disposer to Mounting Assembly
- 15 Dishwasher Inlet Plug Removal
- 16 Connect Disposer to Plumbing
- 17 Check for Leaks
- 18 IMPORTANT SAFETY INSTRUCTIONS
- 19 USER MAINTENANCE INSTRUCTIONS
- 20 WARRANTY
- 21 Documents / Resources
  - 21.1 References

## 79841-ISE Evolution Compact Garbage

Scan QR code to view installation video.



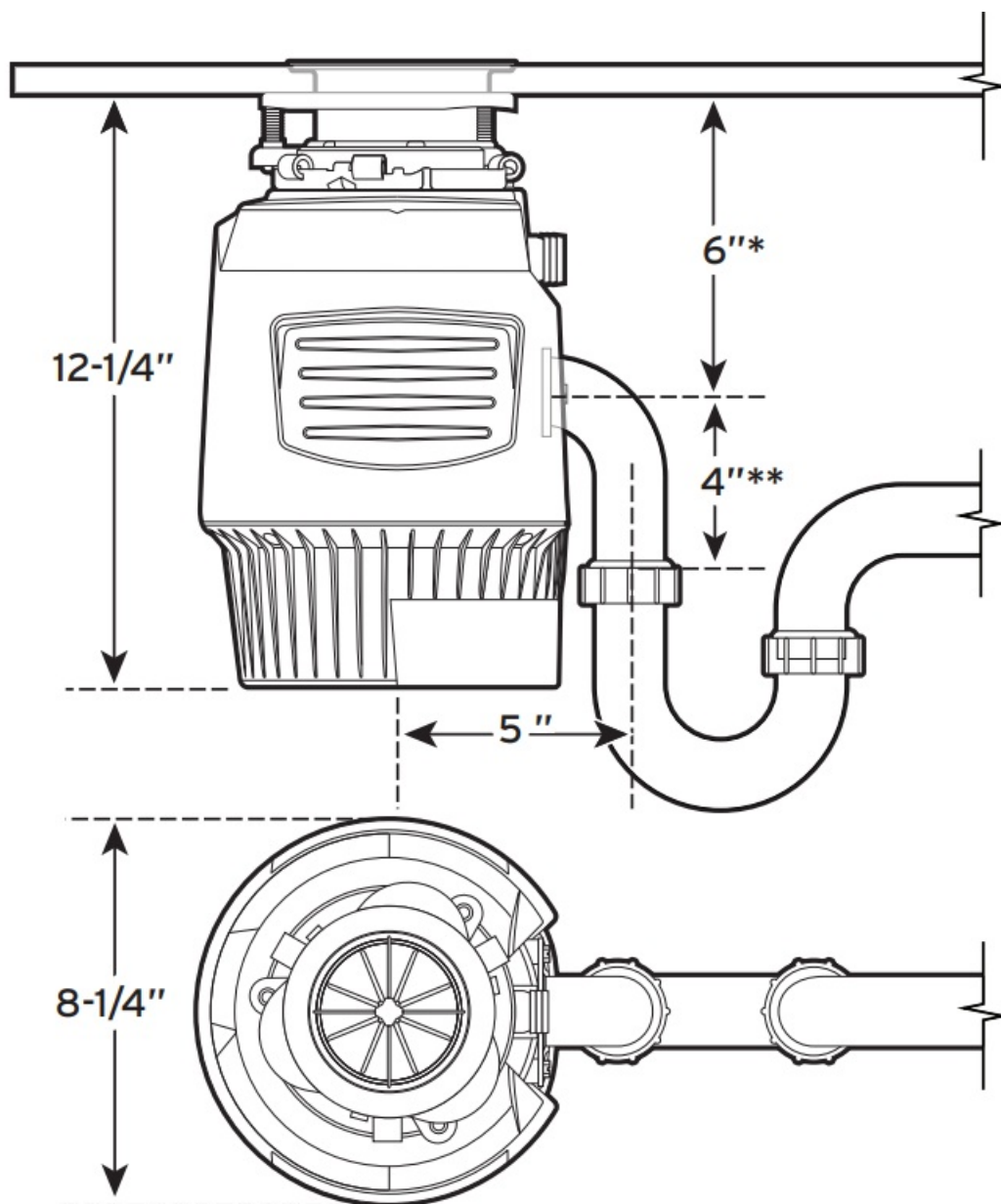
<https://qrco.de/bdA7fO>

## Model and Warranty Length (Years)

Power 700	5
Power .75HP	6
Power 900	6
Power 15ss	6
Power 25ss	7
Power 1.0HP	7
Contractor 333	7
Contractor 1000	8
Evolution .75HP	8
Evolution 35ss	8
Evolution 1100	8
Evolution Septic Guard	8
Evolution Cover Control	8
Evolution 45ss	9
Evolution 1300	9
Evolution 1.0HP	10
Evolution 55ss	10
Evolution 1500	10
PRO 750	10
PRO Cover Control	10
PRO 1000	11
PRO 1250	12

## Dimensions

For curved discharge tube



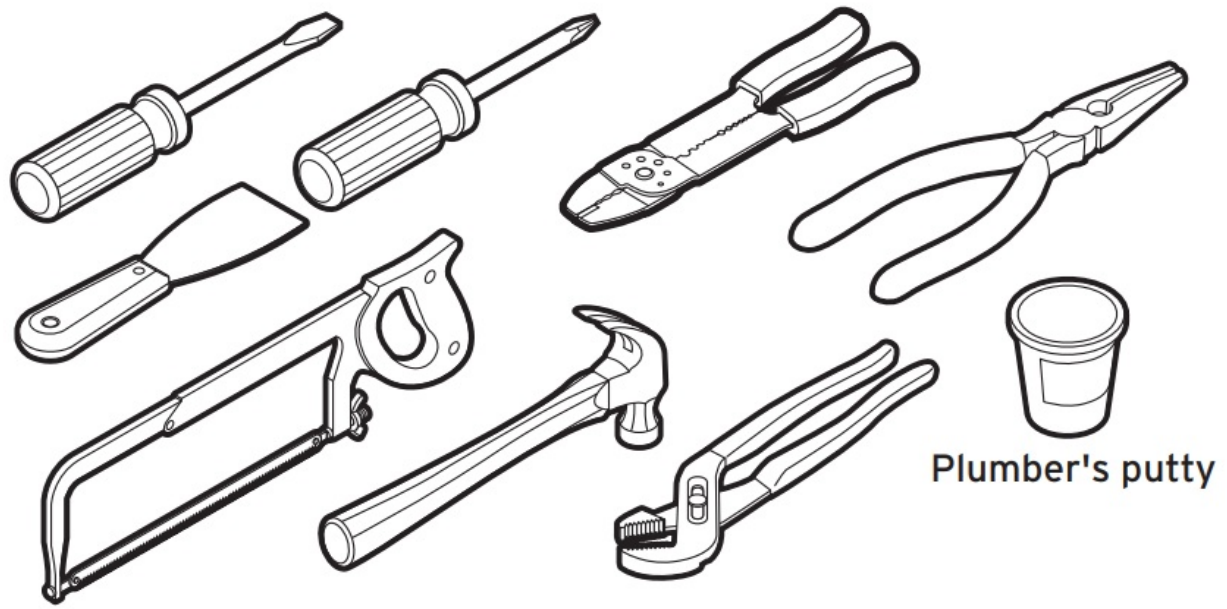
\* Distance from bottom of sink to center line of disposer outlet.

Add 1/2" when stainless steel sinks are used.

\*\*Length of tailpipe from center line of disposer outlet to end of tailpipe.

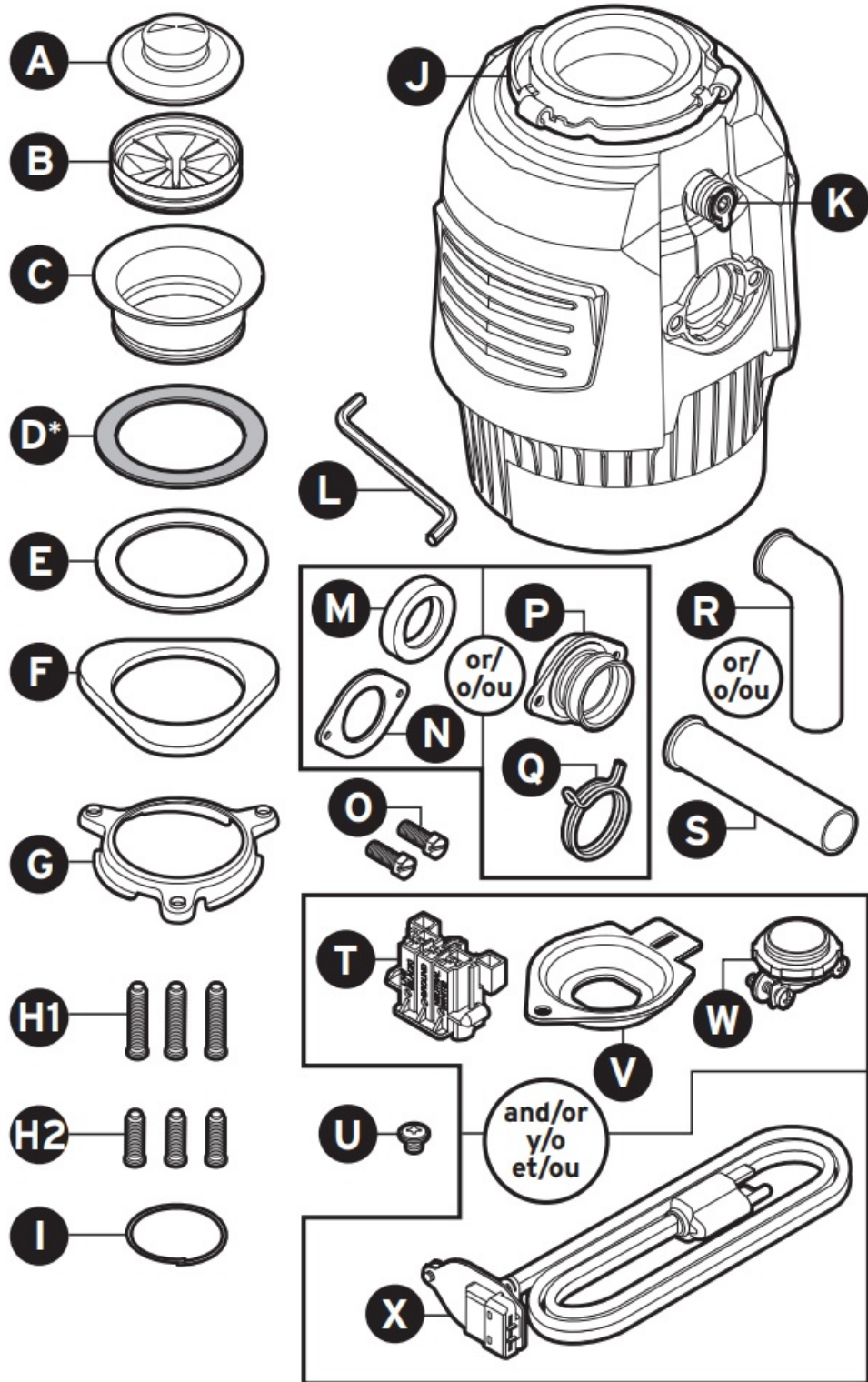
**Note:** For Cover Control Model dimensions—see Cover Control ICU.

### Tools and Materials Needed (Not Included)



Plumber's putty

**Includes**



A. Stopper	M. Tailpipe Gasket
B. Sink Baffle	N. Flange
C. Sink Flange	O. Bolts
D. Rubber Sink Gasket*	P. Anti-Vibration Tailpipe Mount
E. Fiber Gasket	Q. Spring Clamp
F. Backup Flange	R. Discharge Tube (curved)
G. Mounting Ring	S. Discharge Tube (straight)
H1. 1 1/2" Screws	T. EZ Connect Adapter
H2. 1 1/8" Screws	U. Ground Screw
I. Snap Ring	V. Cover Plate
J. Lower Mounting Ring	W. Cable Strain Relief
K. Dishwasher Inlet Plug	X. EZ Connect Power Cord
L. Wrenchette	

\*Certains modèles uniquement

## Safety Information

### **DANGER**

indicates a hazardous situation which, if not avoided, will result in death or serious injury.

### **WARNING**

indicates a hazardous situation which, if not avoided, could result in death or serious injury.

### **CAUTION**

indicates a hazardous situation which, if not avoided, could result in minor or moderate injury.

### **NOTICE**

is used to address practices not related to personal injury.

### **SAFETY INSTRUCTIONS**

(or equivalent) signs indicate specific safety-related instructions or procedures.



**WARNING** Read these instructions carefully. Failure to follow the Installation, Operating and User-Maintenance Instructions may result in personal injury, water leaks, or property damage.



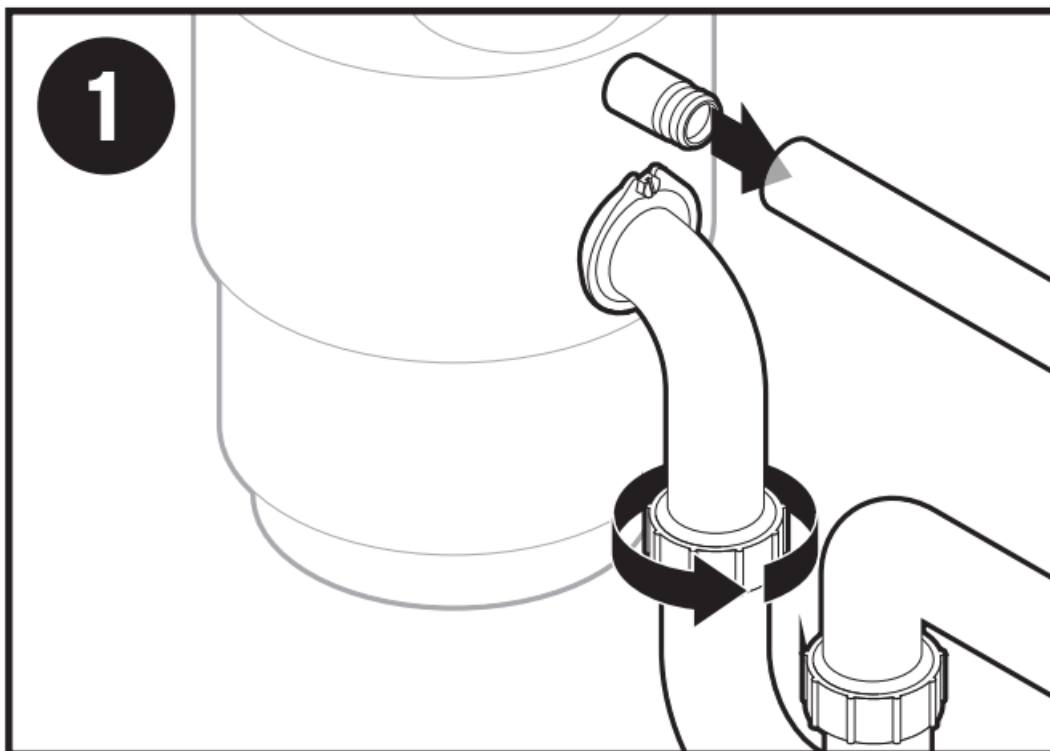
### **WARNING SHOCK HAZARD**

Turn off electric power at fuse box before beginning installation.

### **NOTICE**

- Risk of property damage. Do not use plumbers putty on any disposer connection other than the sink flange. Do not use thread sealants or pipe dope.
- Risk of property damage. If connecting a dishwasher, the dishwasher inlet plug **MUST** be removed or the dishwasher may overflow. See step 25.

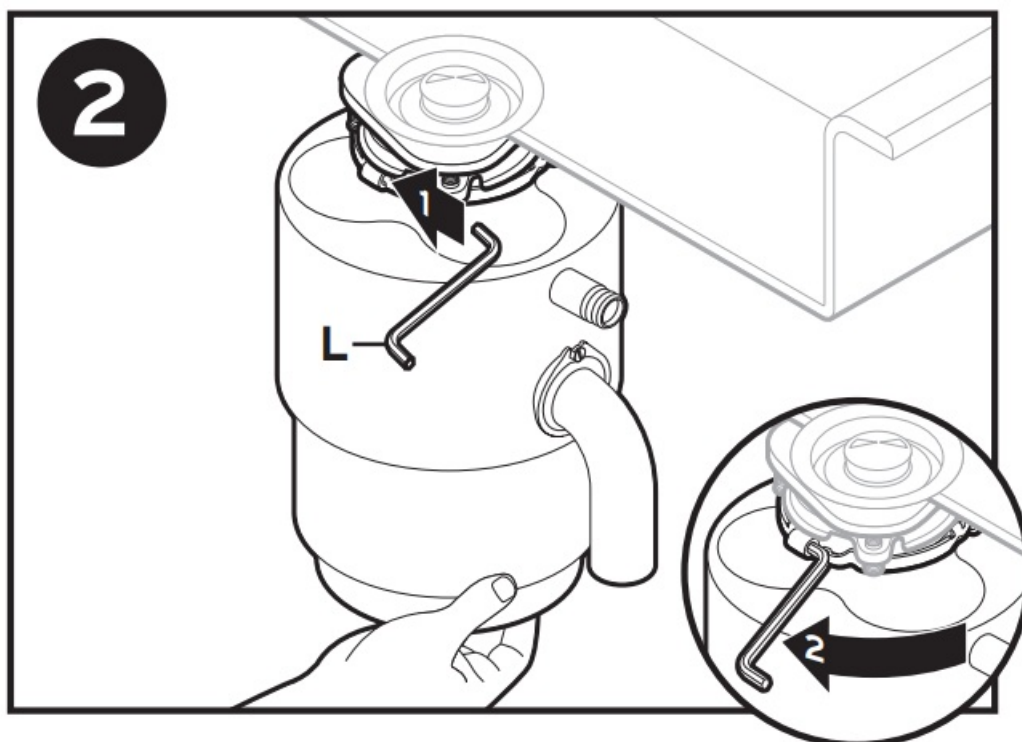
## Remove Existing Disposer



If you are replacing an Existing Disposer, continue to Step 1.

If there is No Existing Disposer, turn off electrical power at circuit breaker or fuse box, disconnect sink drain and skip to Step 8.

1. Turn off electrical power at circuit breaker or fuse box. Disconnect drain trap from waste discharge tube.  
Disconnect dishwasher if connected to the disposer.

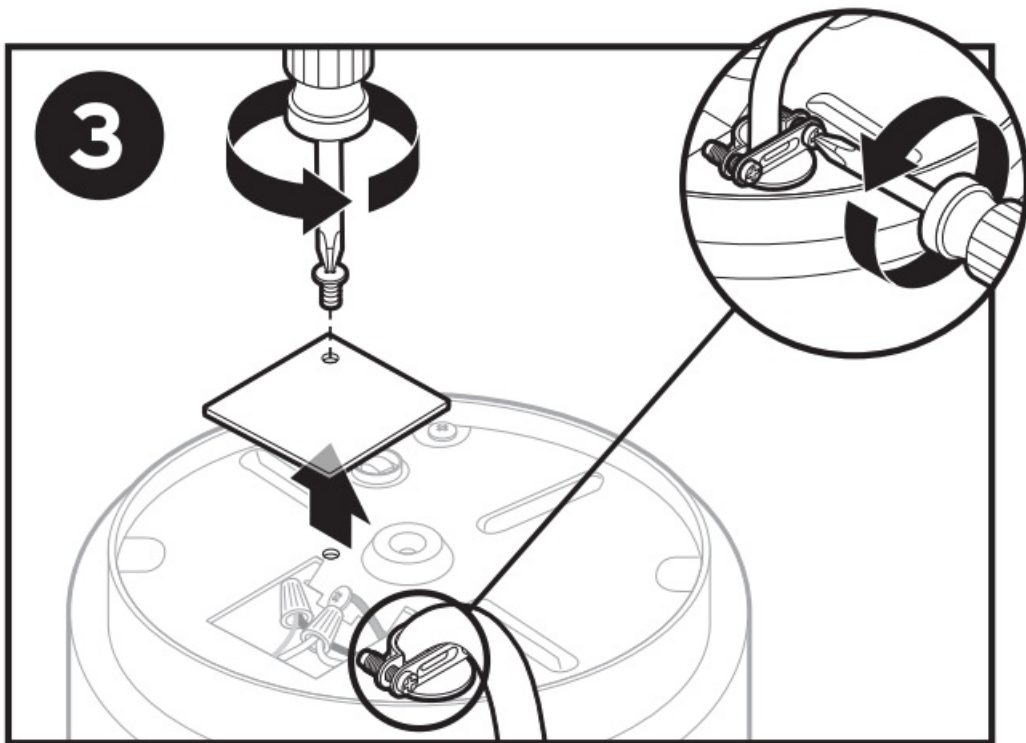


2. Support disposer, (1) insert end of (L) into right side of mounting lug, and (2) turn. Disposer will fall free.

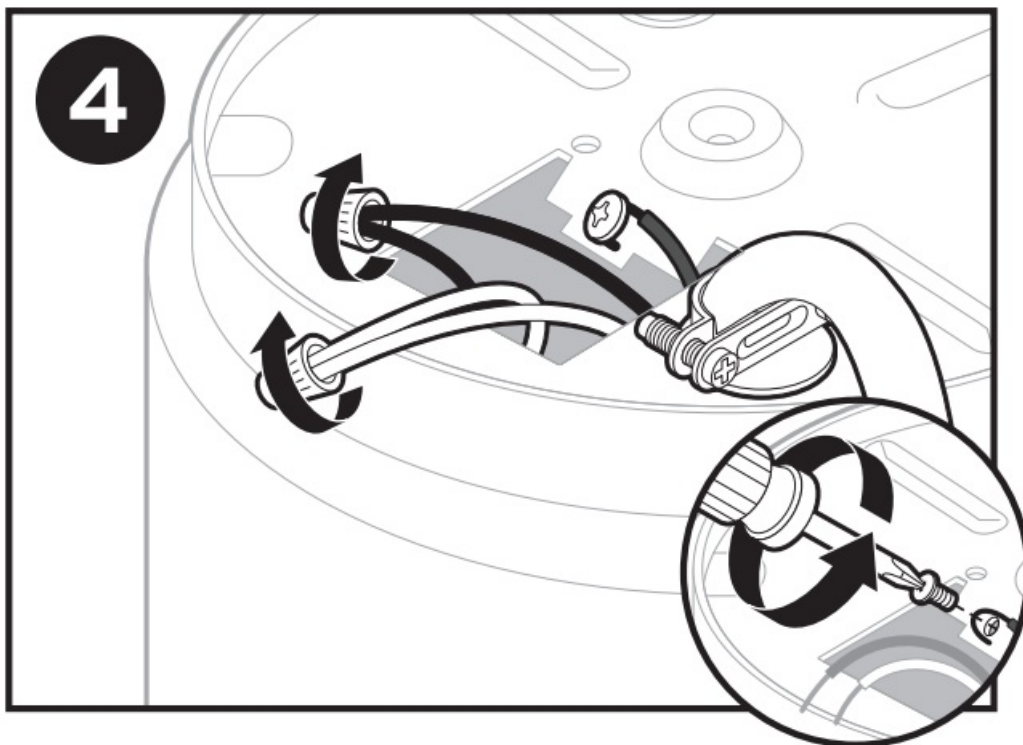


**WARNING FALL HAZARD**





3. For corded disposer, unplug cord, remove unit. Existing power cord must not be re-used. InSinkErator EZ Connect power cord must be used. Proceed to step 5.
- For hard-wired disposer, flip disposer over, remove electrical cover plate, loosen strain relief and proceed to step 4.



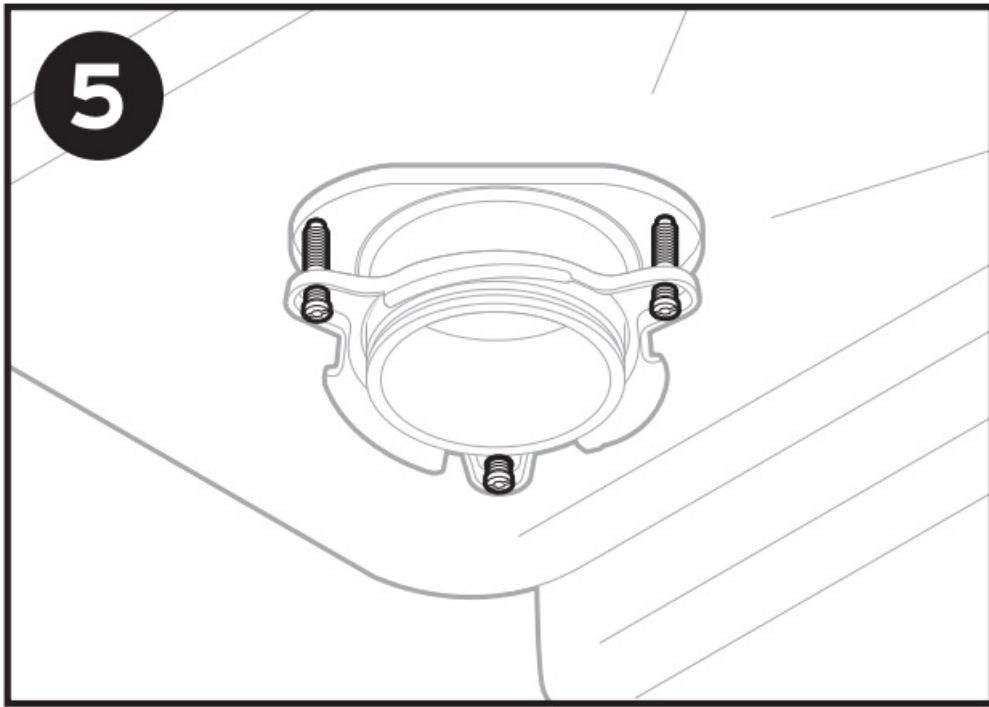
4. Disconnect two disposer wires and loosen the green ground screw to remove the ground wire.

### **Remove Current Mounting Assembly**

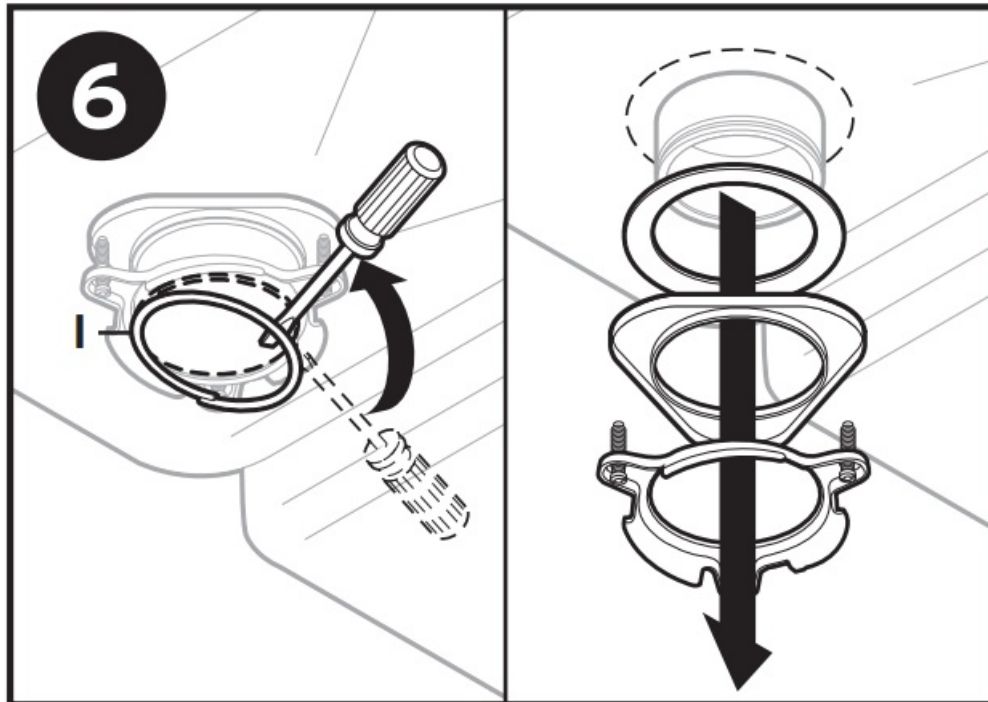
5. If new disposal mounting assembly is the same, you may choose to skip to step 12.

**Note:** For sinks thicker than 3/8", you will need to replace existing 1-1/2" screws with 1-1/8" screws (H2). See step 11.

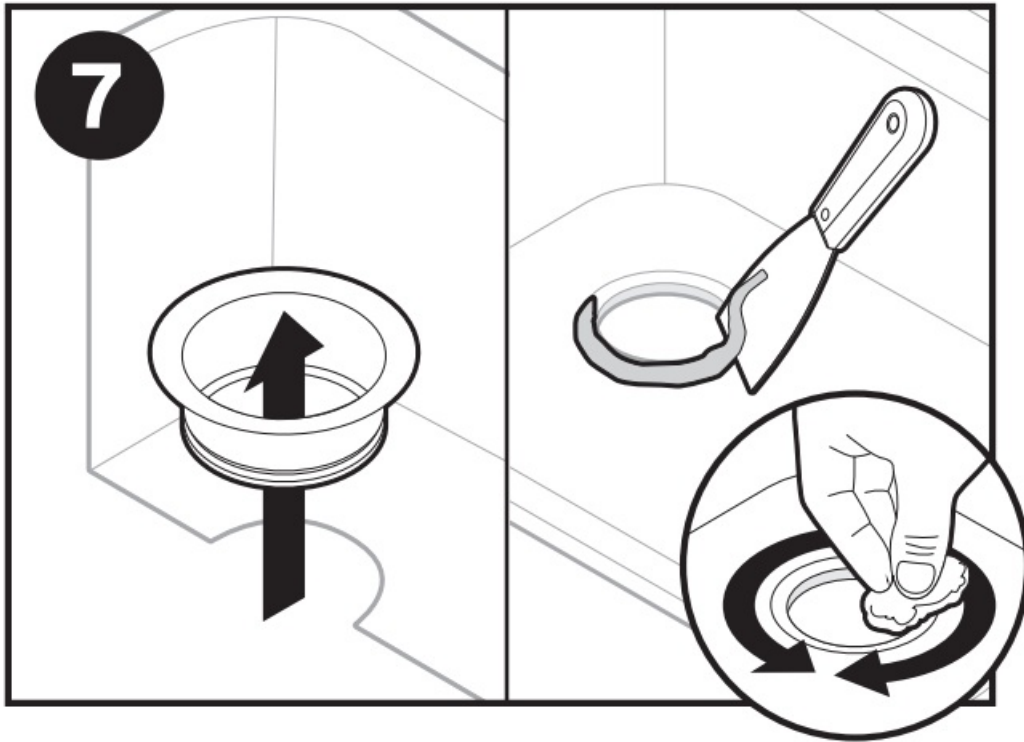
Using a flathead screwdriver, loosen the 3 screws on the mounting assembly.



6. Using a flathead screwdriver, pry off (I).



7. Remove flange from sink. Remove old plumber's putty from sink with putty knife.



### Install Sink Flange

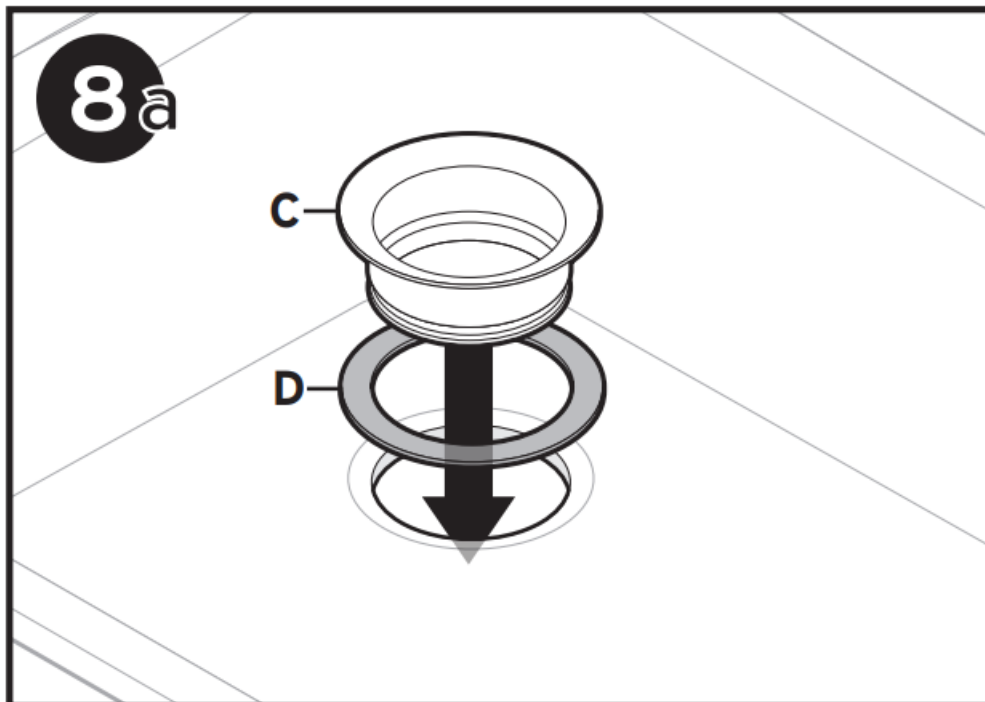
8. 8a. For models with a rubber gasket:

Firmly press (C) and (D) into the sink opening.

#### NOTICE

Property Damage. Risk of long/short term water leakage if not properly assembled.

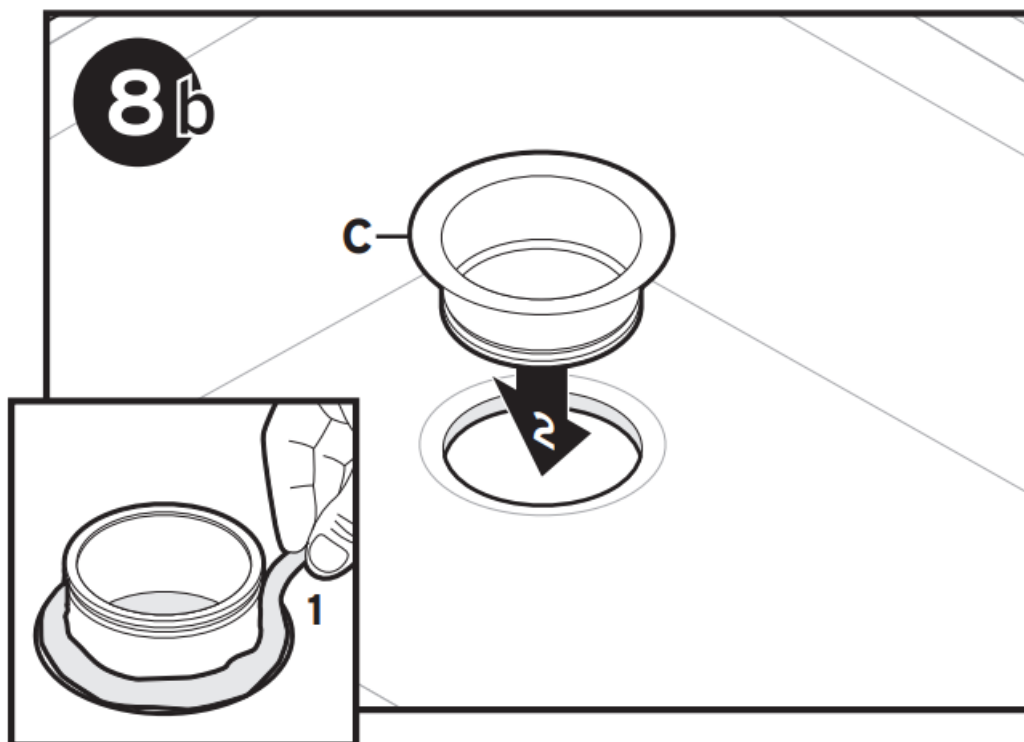
Para modelos con junta de goma: presione firmemente (C) y (D) en la abertura del fregadero.



8b. For models without a rubber gasket:

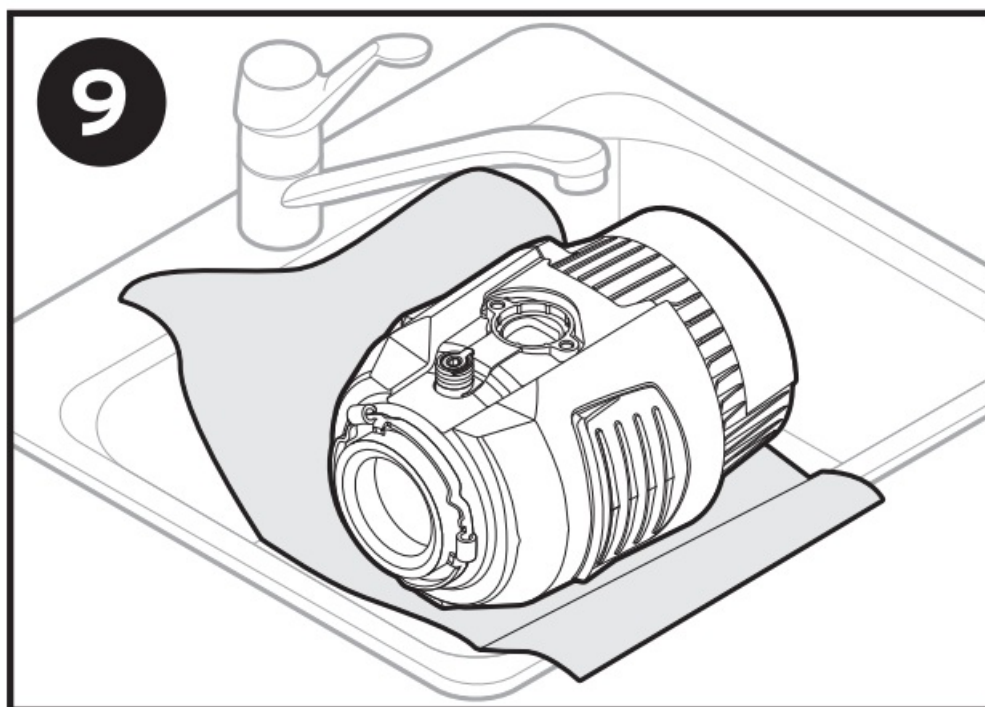
(1) Evenly apply 1/2" thick rope of plumber's putty around (C). (2) Press (C) firmly into sink drain. Remove excess putty.

**NOTICE** Property Damage. Risk of long/short term water leakage if not properly assembled.

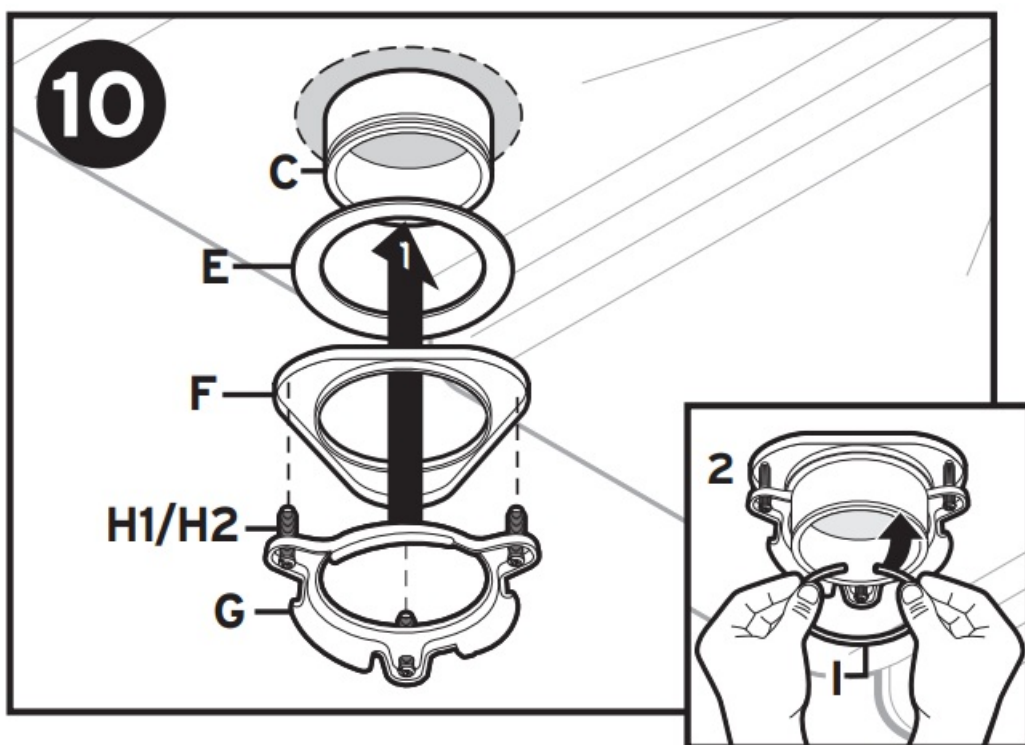


### Attach Mounting Assembly

9. Place a weight, such as the disposer, on the sink flange to hold it in place. Use a towel to avoid scratching sink.



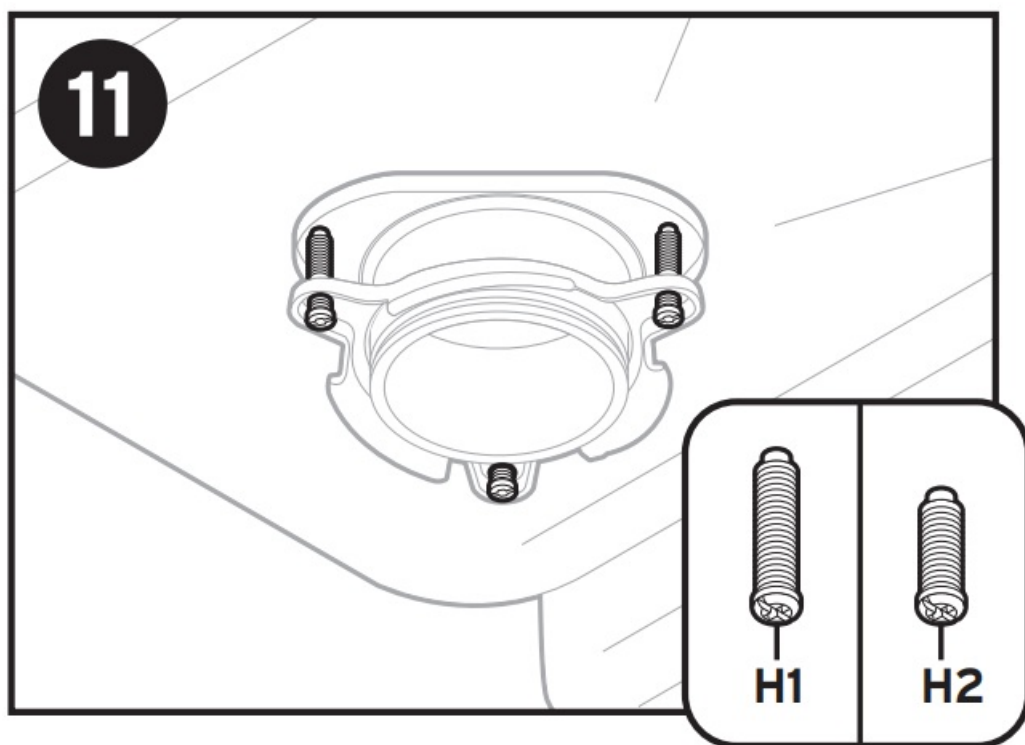
10. (1) Insert (E), (F) and (G). Hold in place while inserting (I).  
(2) Pull (I) open and press firmly until it snaps into place.



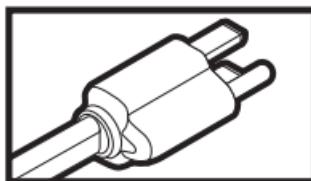
11. Tighten (H1) evenly and firmly against backup flange.

Use (H2) if sink is more than 3/8" thick.

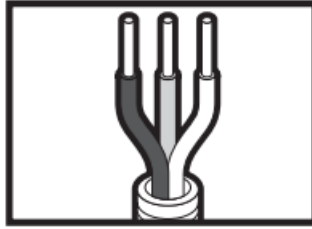
If sink is thicker than 3/4" an Extended Sink Flange (FLG-SSLG) is required and sold separately.



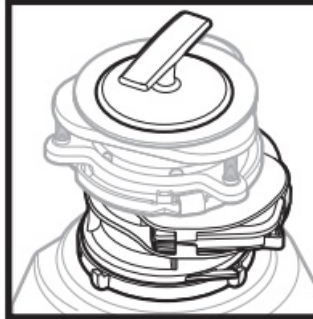
12. InSinkErator EZ Connect Cord or EZ Connect hardwire adapter MUST be used for proper installation.



For EZ Connect Cord Installation go to



For EZ Connect Hardwire Adapter Installation go to



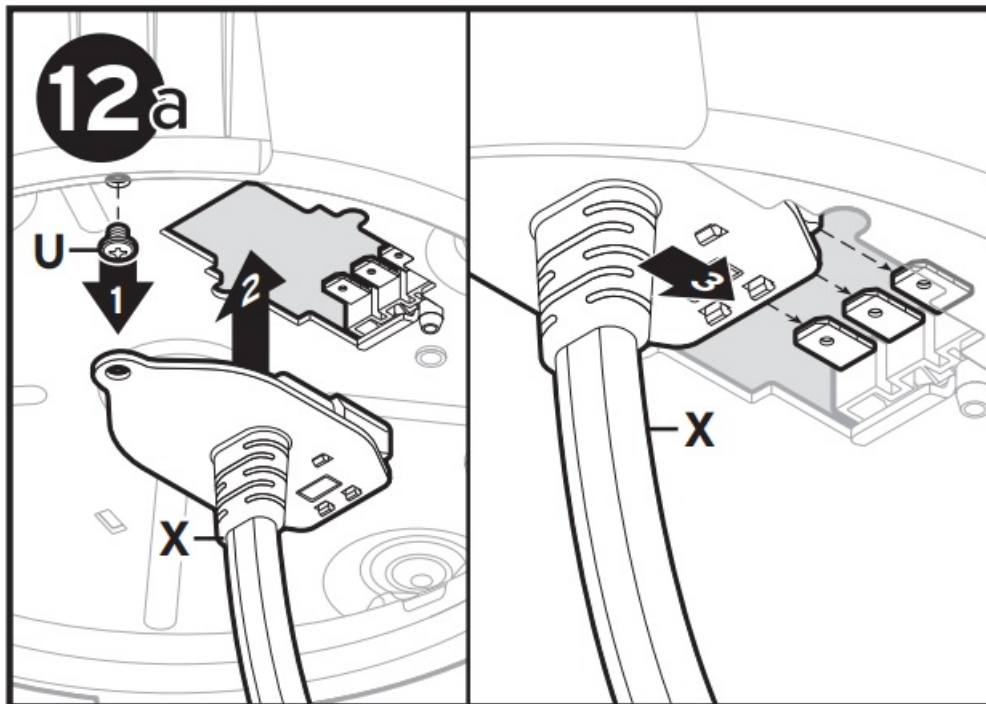
Cover Control Accessory Installation: Go to Cover Control Installation Guide and complete installation. Once Cover Control is installed, go to step 20 to complete disposer installation.

### Connect Electrical Supply (Corded)

#### CAUTION

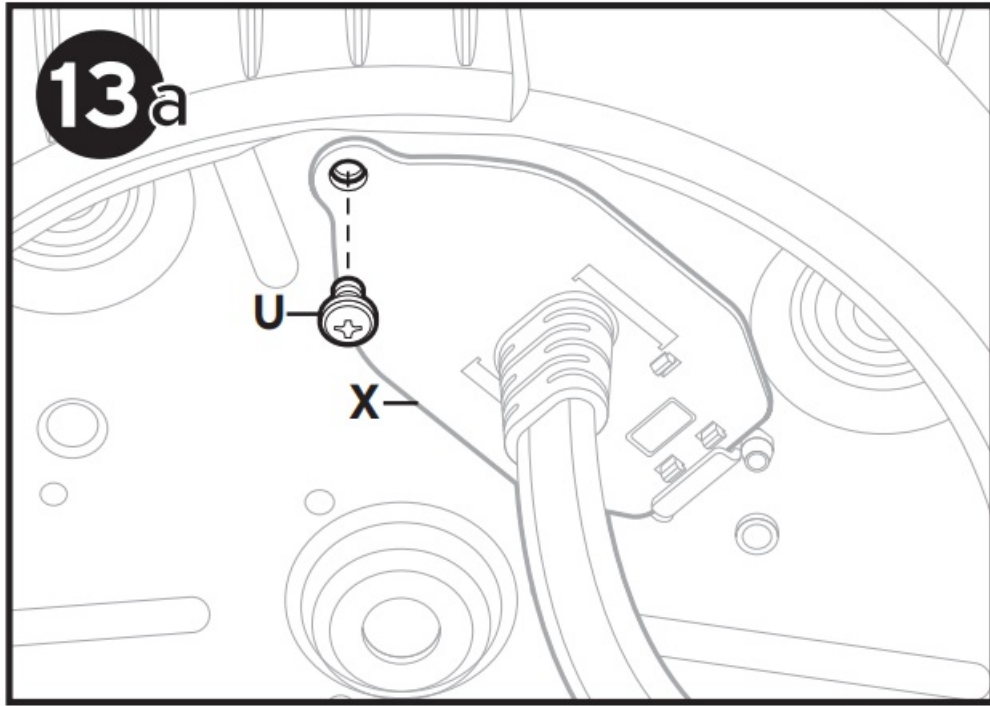
If EZ Connect cord is not provided with disposer, it must be purchased separately. Do not re-use pre-existing power cord.

- (1) Remove (U) from bottom of disposer.
- (2) Insert (X) into cut-out on bottom of disposer.
- (3) Push (X) forward to connect power to disposer.



13. Install and tighten (U) through (X) and into bottom of disposer.  
Continue to step 20.



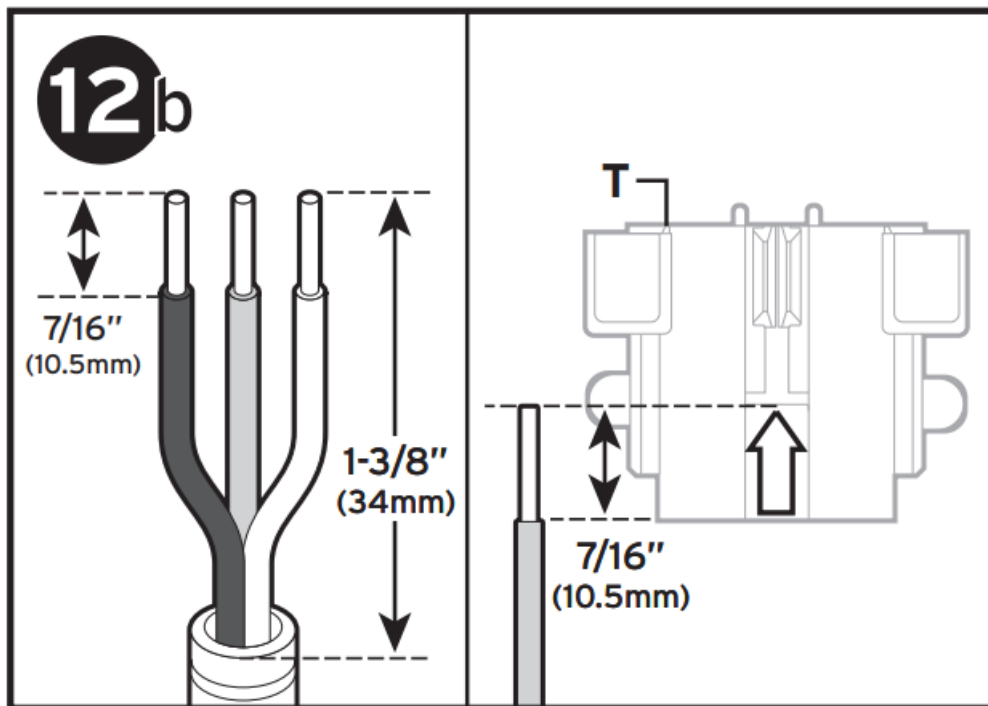


### Connect the Electrical Supply (Hardwire)

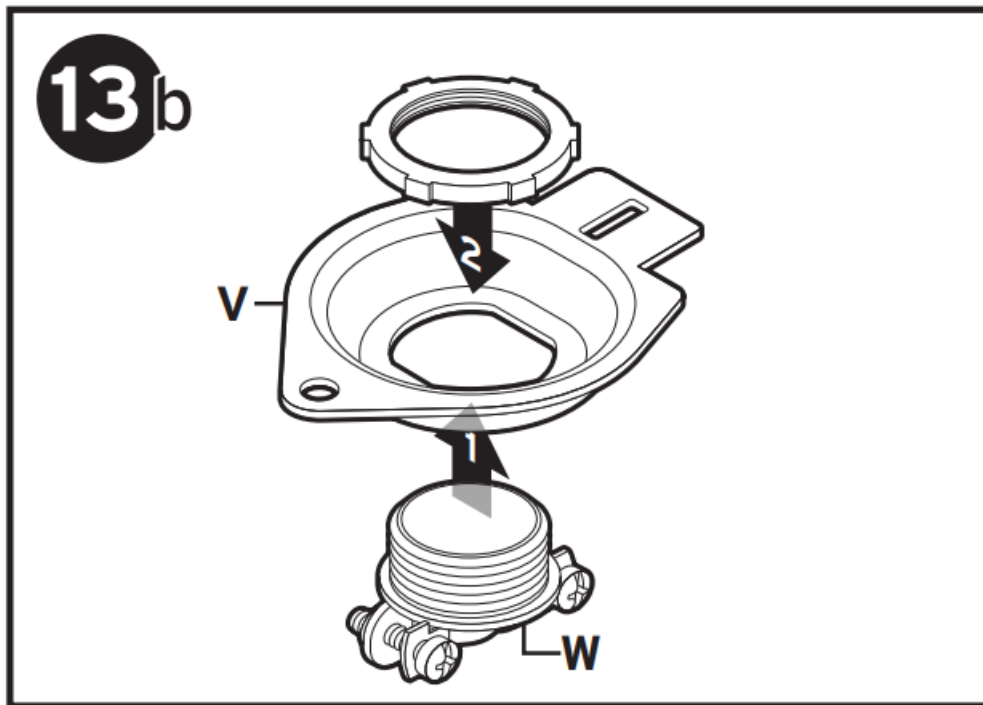
#### CAUTION

EZ Connect hardwire adapter is designed to work with Romex or BX cable. It should not be used with a standard 3-prong power cord.

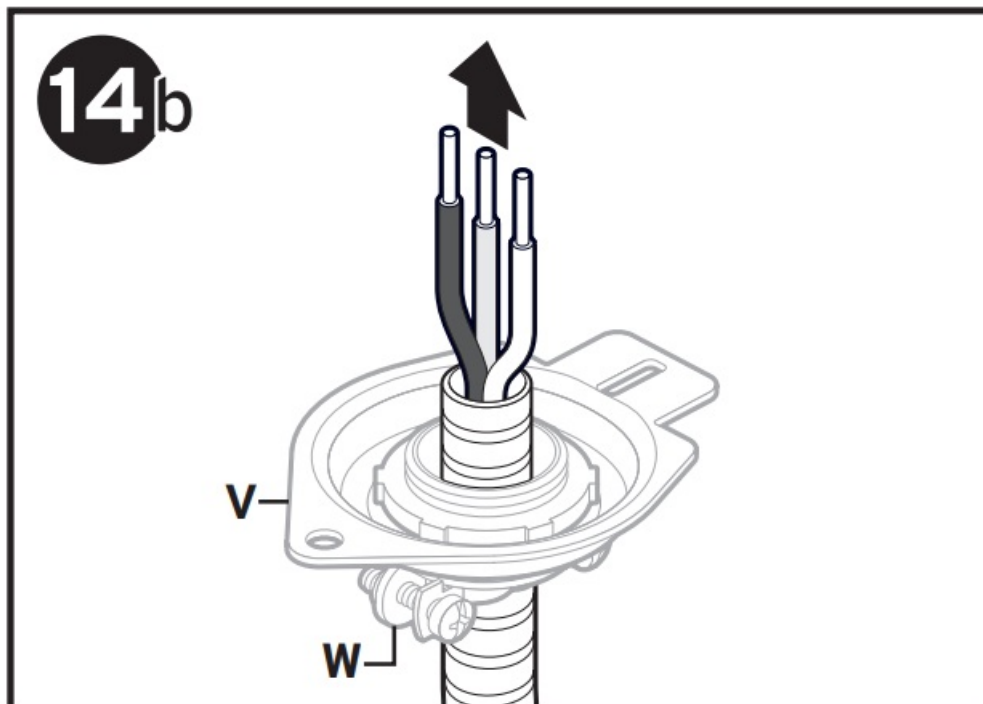
12b. Prep wiring so that 1 3/8" extends from jacket. Strip wiring ends 7/16". Verify correct length with arrow embossed on underside of (T).



13b. Remove nut from (W). From the bottom, (1) install threaded portion of (W) into (V) and (2) secure from above with nut.



14. 14b. Insert cable with prepped wiring through (V, W) assembly.



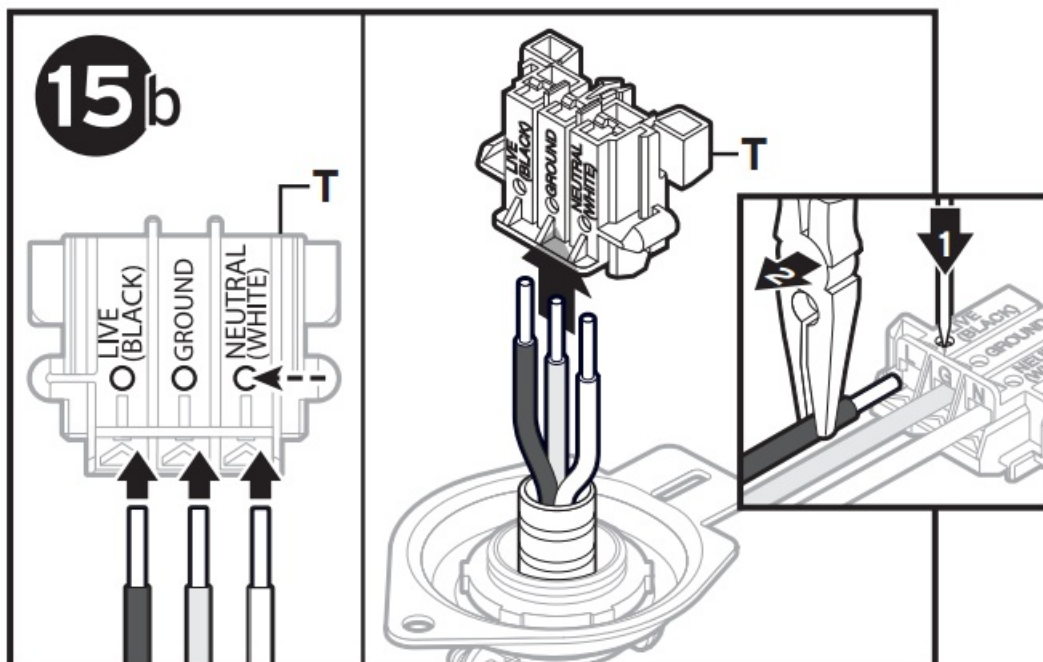
15. 15b. Verify proper wire connection locations on side of (T): Live (black wire), Ground (green/bare wire), Neutral (white wire).

Insert wires into proper locations on (T) and push to lock.

**Note:** If it is necessary to remove wiring:

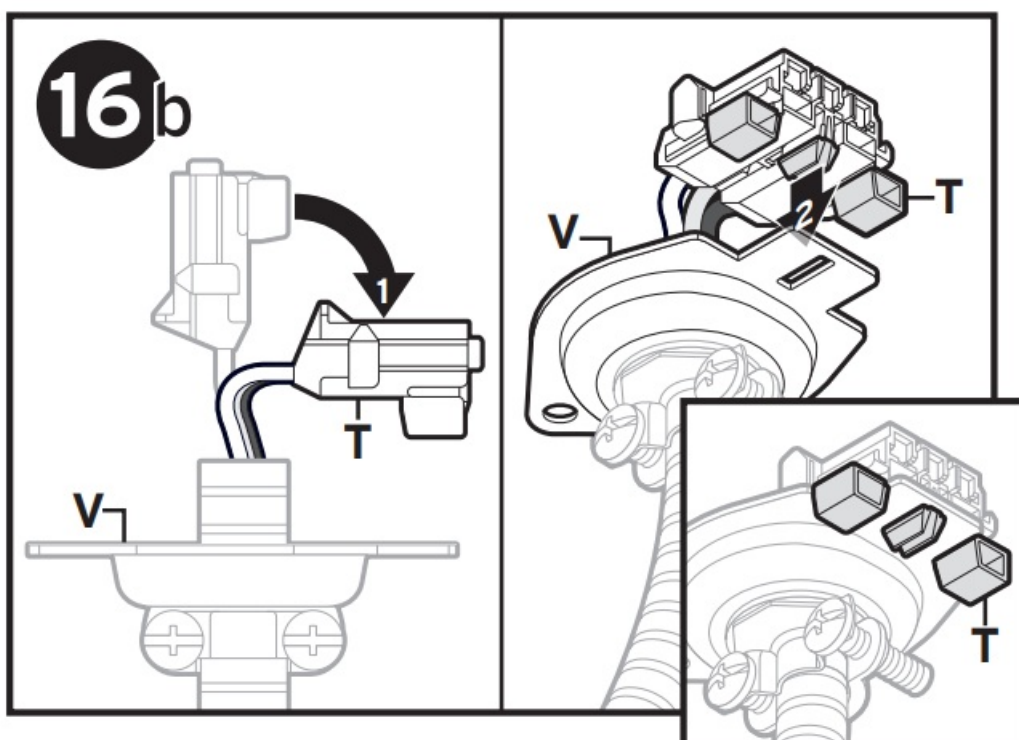
Place (T) on firm surface. (1) Insert pointed end of nail (or similar pointed tool) into wire release and while pressing down firmly, (2) pull wire out using needle nose pliers.



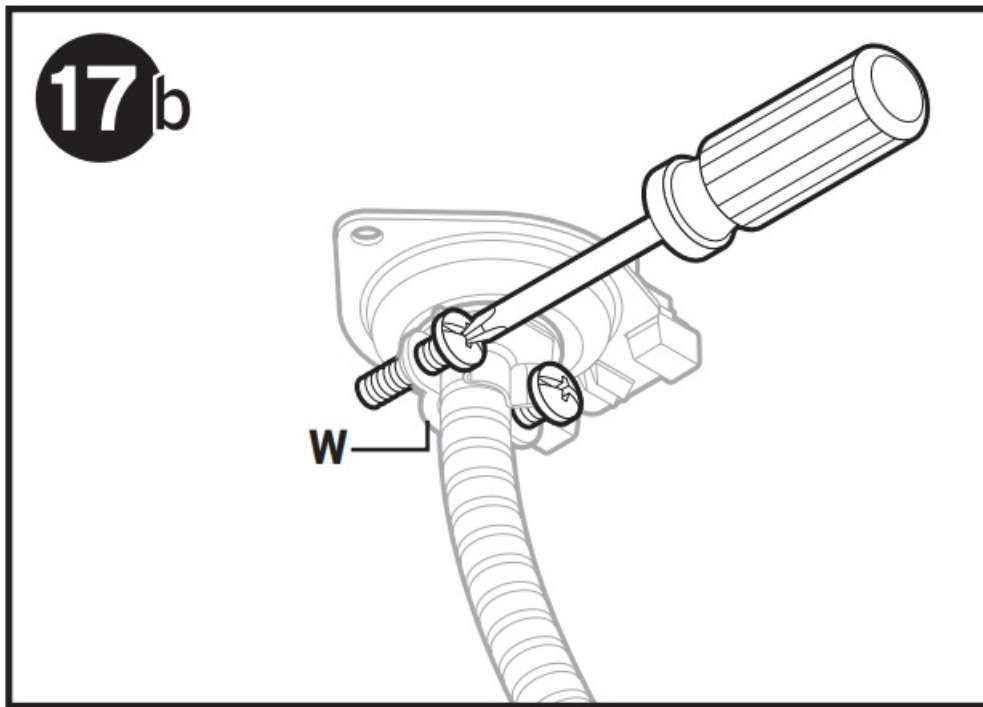


### Connect the Electrical Supply (Hardwire)

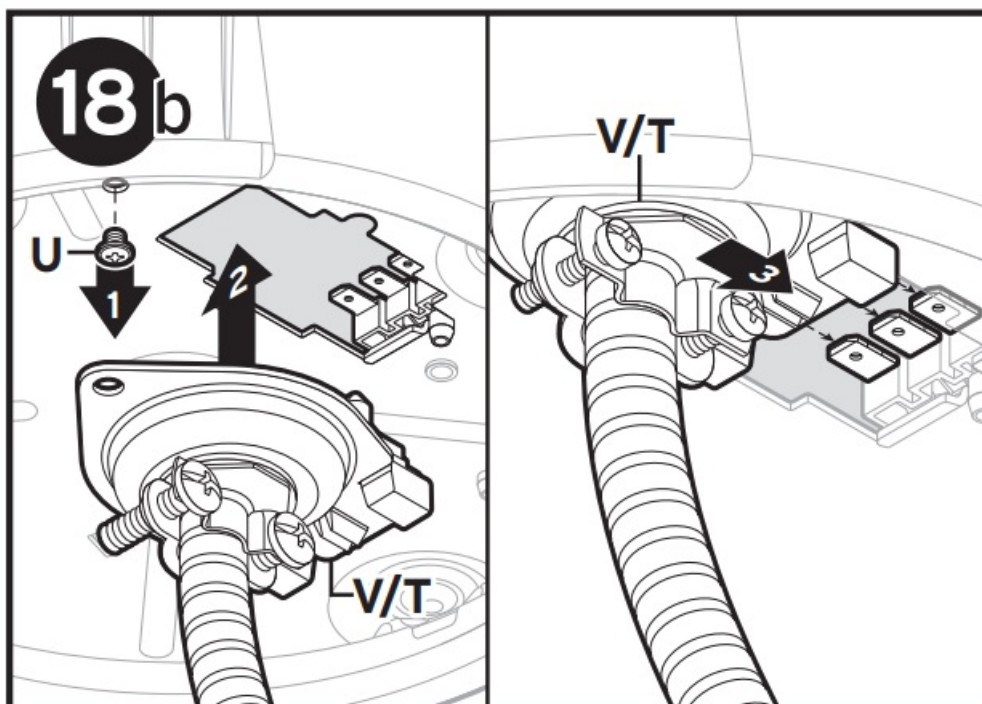
16. 16b. (1) Bend (T) downward (approximately 90°).  
 (2) Align and push (T) onto (V) until plastic latch locks into (V) slot.



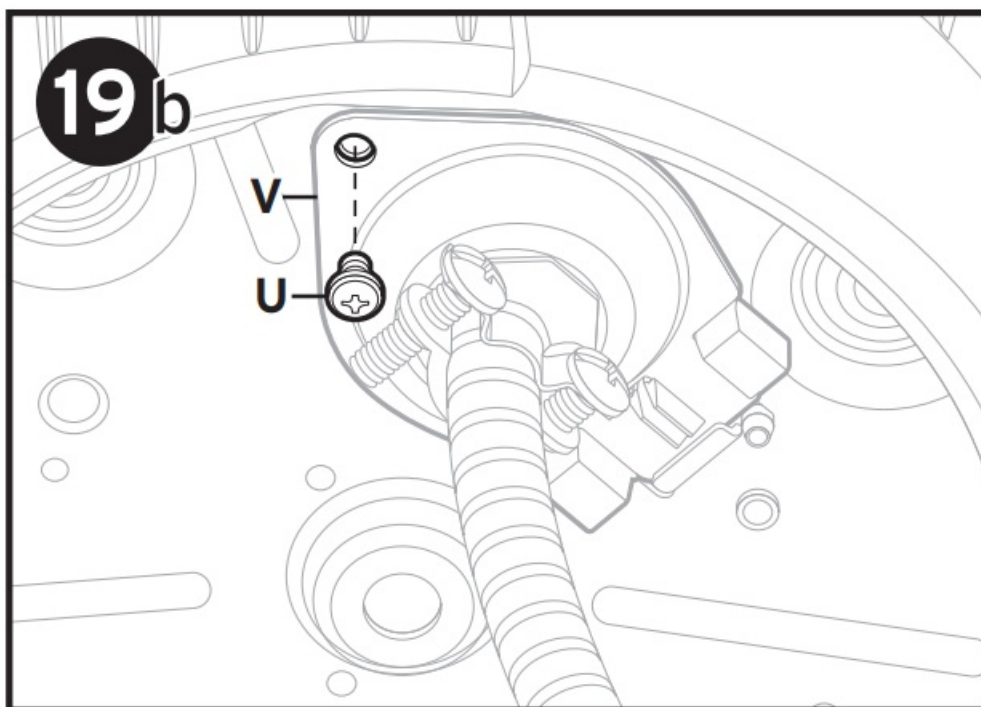
17. Tighten (W) screws.



18. (1) Remove U from bottom of disposer.  
 (2) Insert (V/T) into cut-out on bottom of disposer.  
 (3) Push (V/T) forward to connect power to dispose

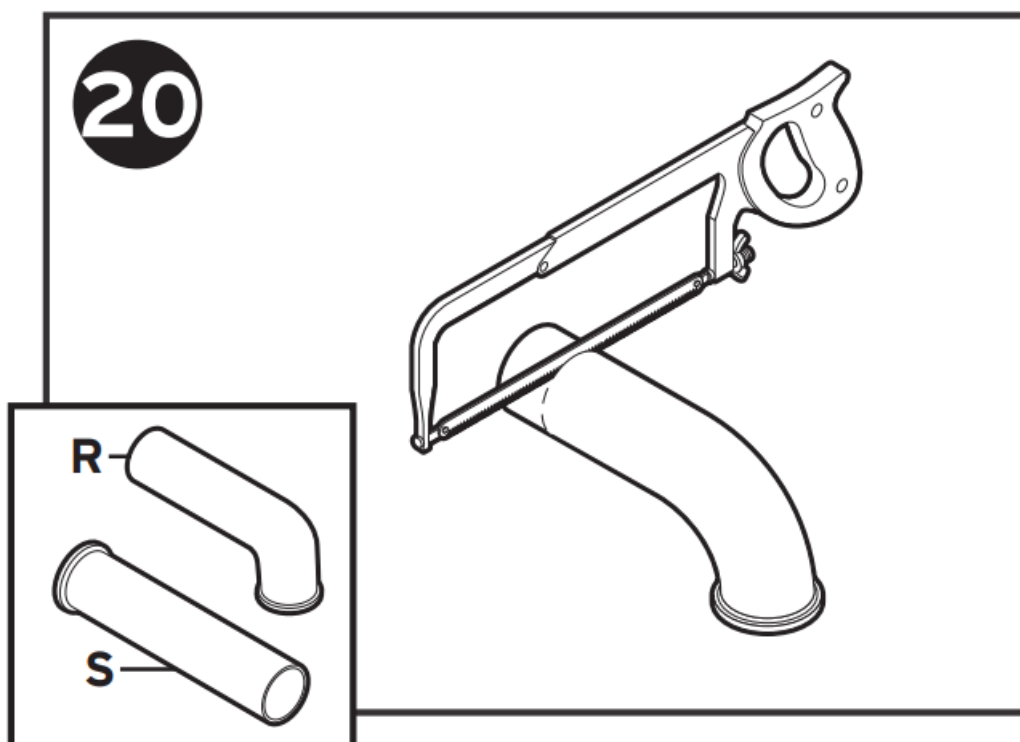


19. Install and tighten (U) through (V) and into bottom of disposer.



## Connect Plumbing

20. You may need to trim (R or S) to ensure proper fit.

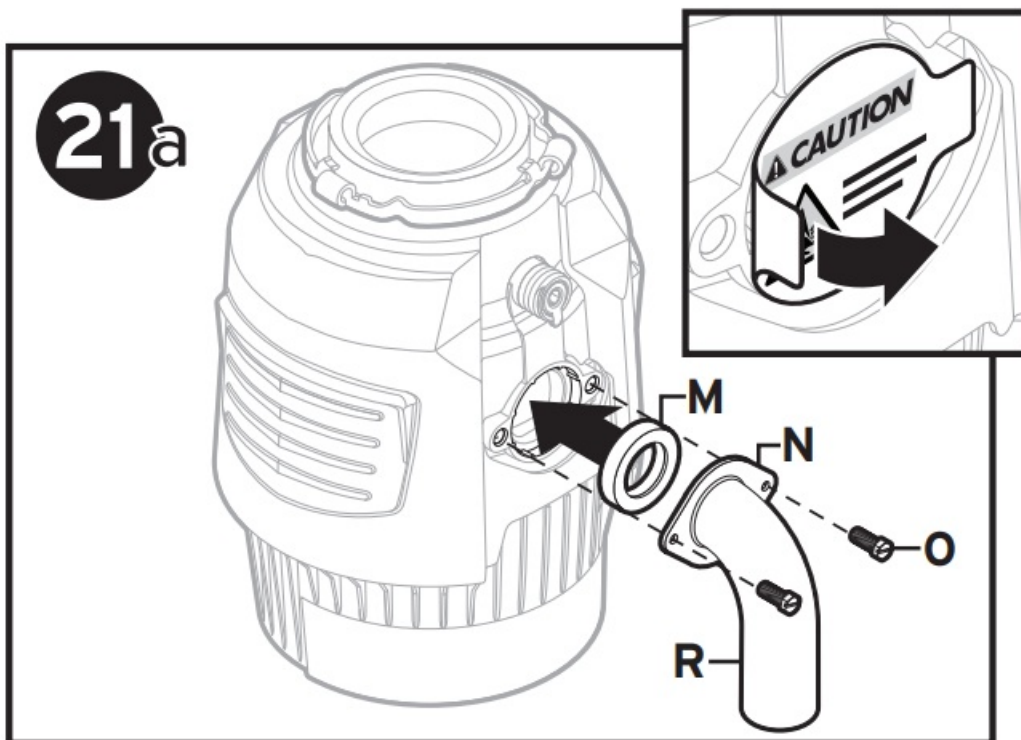


Rejoin instructions [HERE](#) if you have installed a Cover Control Accessory.

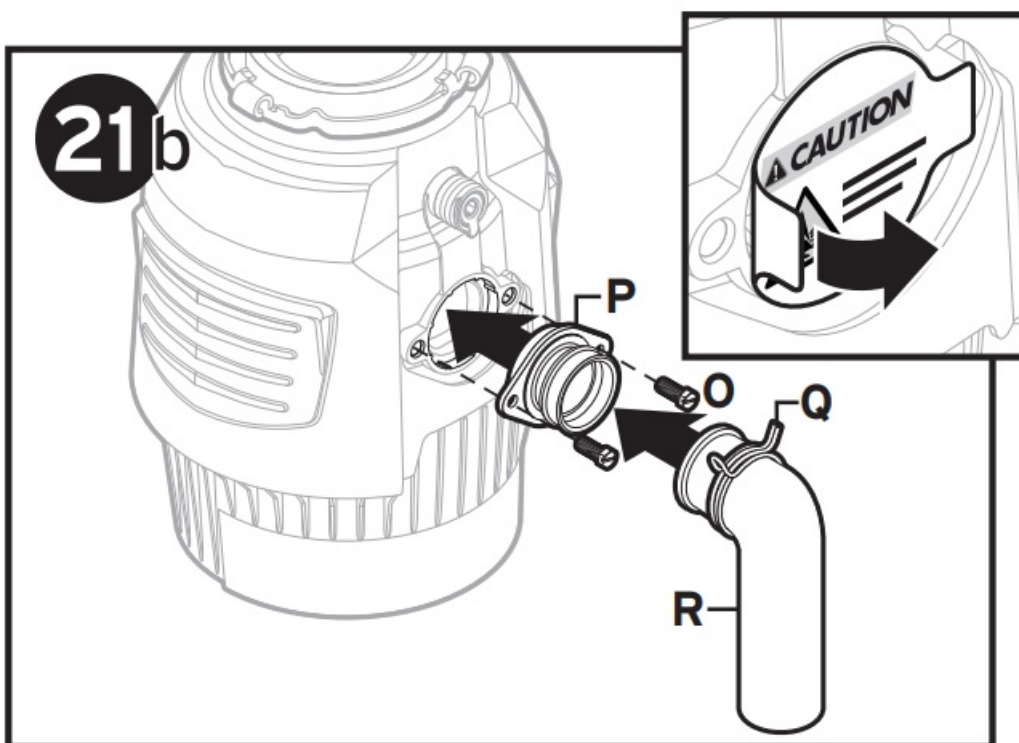


## CAUTION

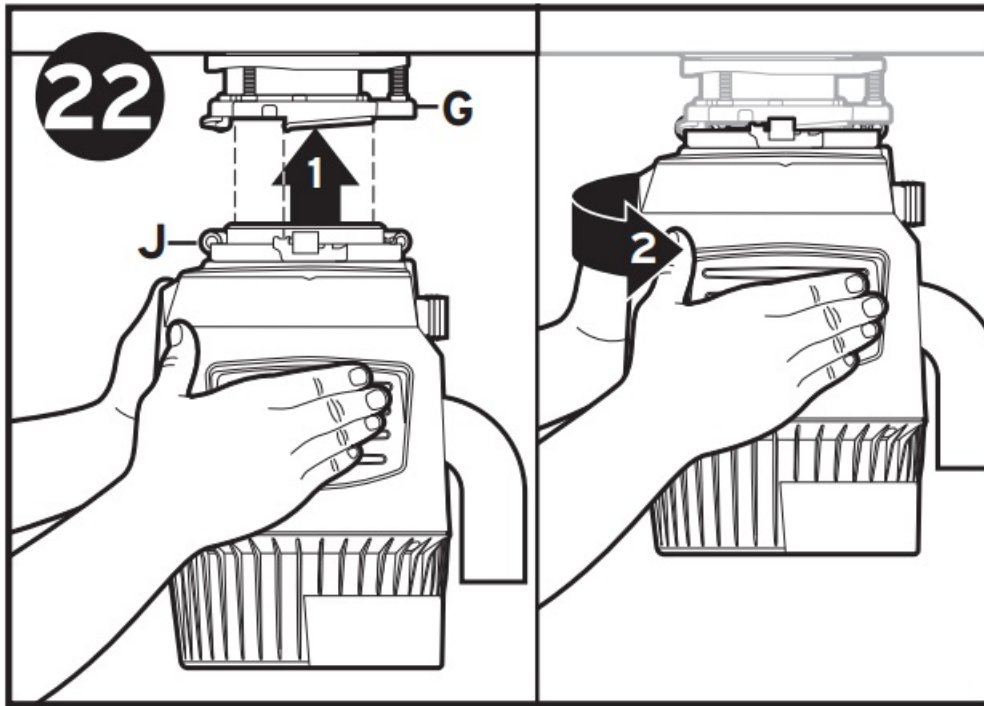
Do not insert fingers into discharge opening.



21. 21a. For most models (those with M and N components): If label is present on discharge, remove. Slide (N) over (R). Insert (M) into discharge outlet of disposer. Secure (M,N) assembly with (O). Although the supplied (R) is preferred, (S) may be used but should be installed with a slight downward pitch. Refer to NOTICE in Step 26.



- 21b. For models with Anti-vibration Tailpipe Mount: If label is present on discharge, remove. Insert (P) into discharge outlet of disposer. Secure (P) with (O). Insert (R) into (P) and secure with (Q). Although the supplied (R) is preferred, (S) may be used but should be installed with a slight downward pitch. Refer to NOTICE in Step 26.
22. Lifting disposer from the bottom, (1) hang disposer by aligning 3 mounting tabs on (J) with slide-up ramps on (G) and (2) slightly turn disposer counter clockwise until discharge tube is aligned with plumbing.

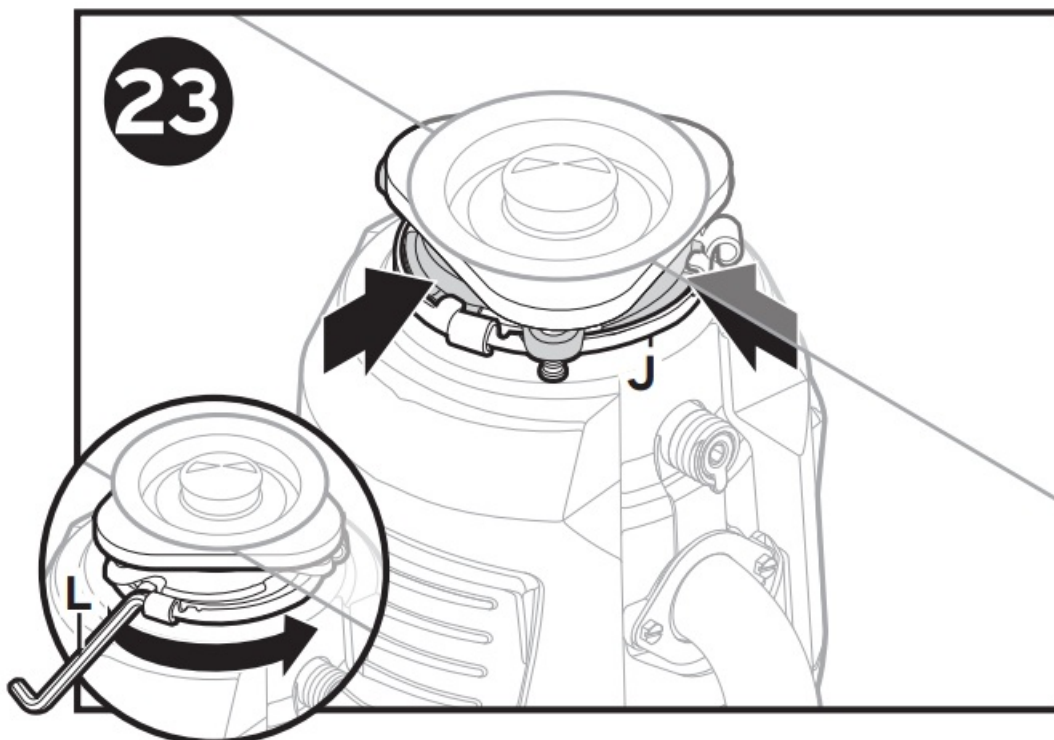


### Connect Disposer to Mounting Assembly

23. Using (L), turn (J) until all 3 mounting tabs latch over the ridges on the slide-up ramps.

#### CAUTION

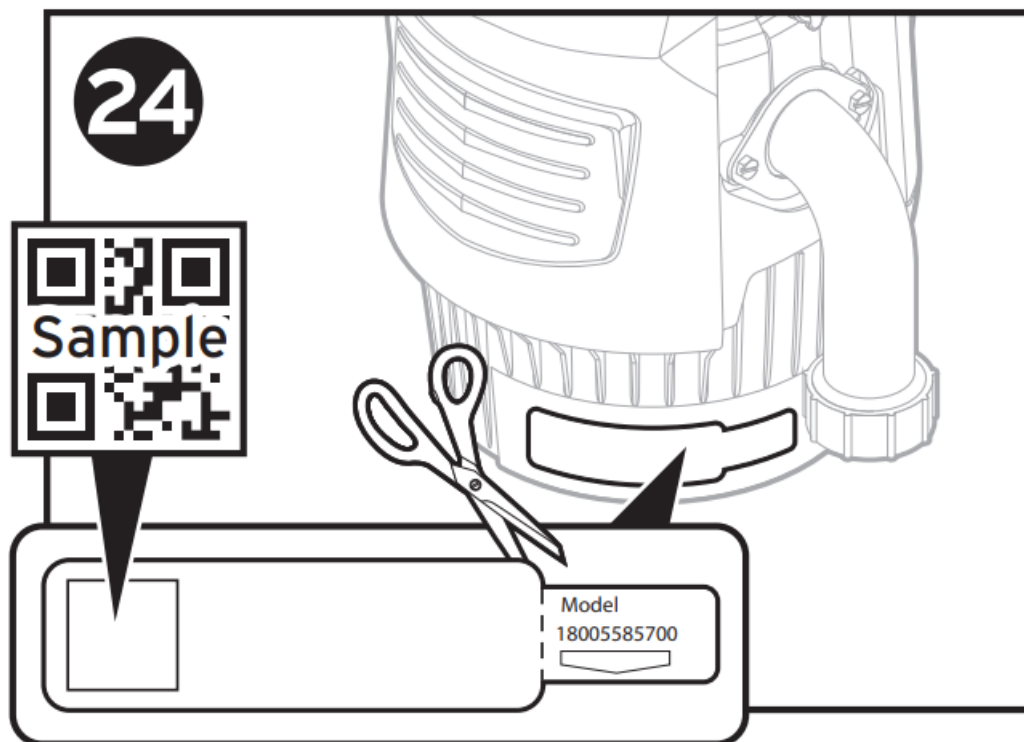
To avoid leaks and/or potential falling hazard, make sure all 3 mounting tabs are latched over ridges.



24. Detach removable portion of spec label and place on a visible location.

Scan QR code on spec label for product registration and additional product information.

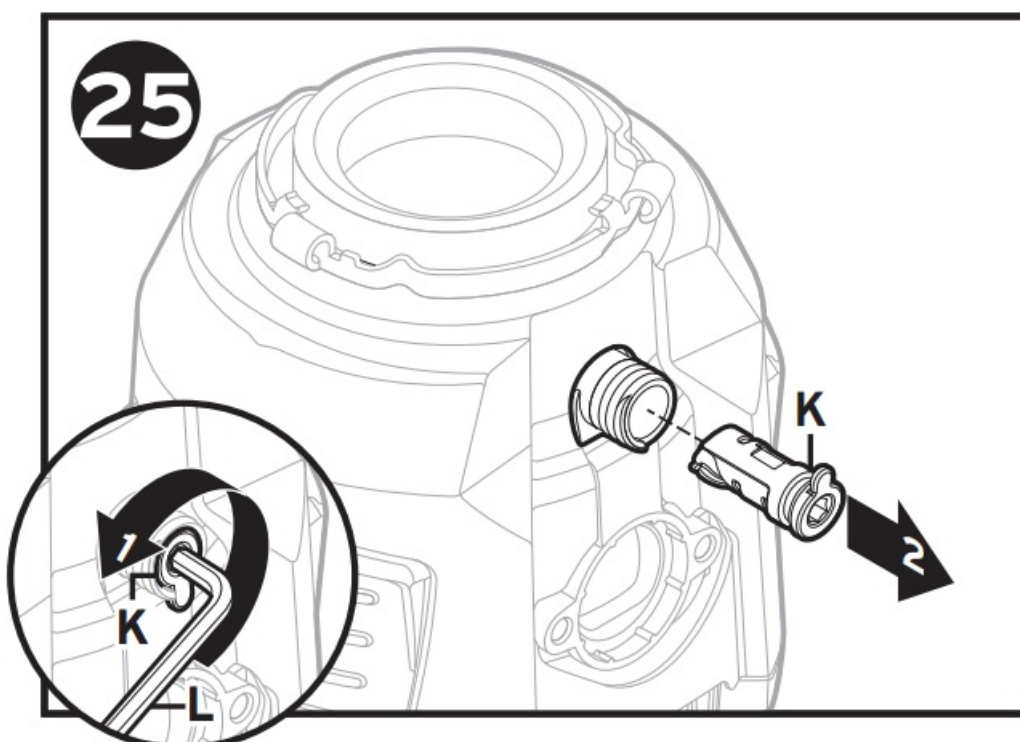




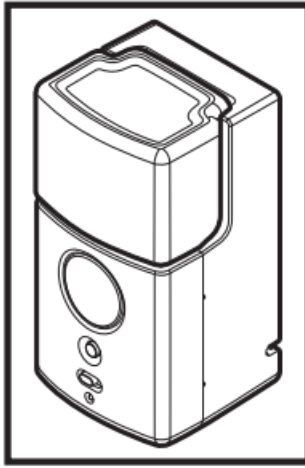
## Dishwasher Inlet Plug Removal

**IMPORTANT:** Dishwasher connection only

25. (1) Insert (L) into (K) and turn 90° counter-clockwise to (2) remove.



For Boost Accessory (sold separately): BEFORE plumbing connection, go to Boost Accessory installation guide NOW—once installed, proceed with step 26 to complete installation.



## **Connect Disposer to Plumbing**

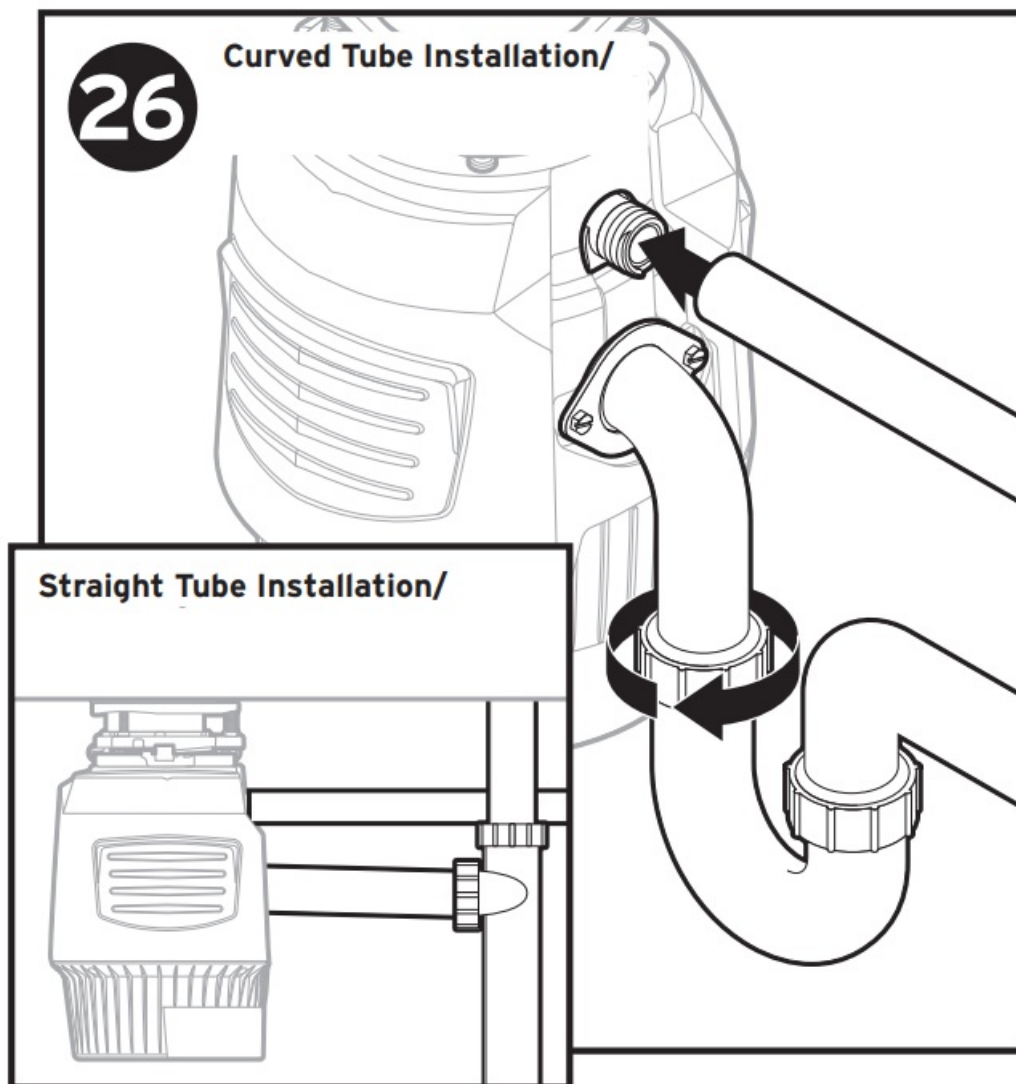
26. Reconnect plumbing (and dishwasher connection if used).

### **NOTICE**

Property Damage: Risk of water leakage if not properly assembled.

To reduce the potential of leaking, the drain line must be properly pitched (not less than 1/4" of pitch per foot of run) from the disposer to the drain connection, with the drain connection being lower than the disposer discharge. Failure to do so could lead to premature corrosion or leaking due to standing water left in the disposer.

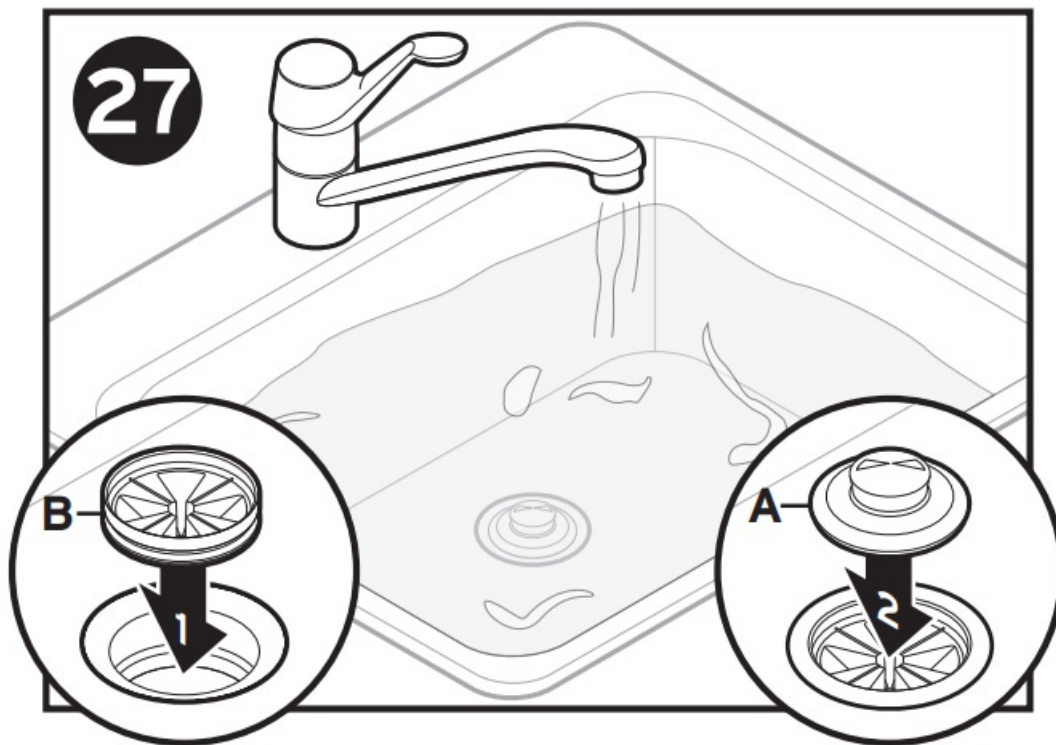
For disposers equipped with an Anti-Vibration Tailpipe Mount™, make sure tailpipe mount is not flexed. You may need to trim tube for proper fit.



### Check for Leaks

To test for leaks, insert (B) into (C), press down evenly until it snaps into place. Insert (A) into sink opening, fill sink with water, remove (A) to drain, then look under sink for leaking water. Reconnect electrical power at fuse box or circuit breaker box.





## IMPORTANT SAFETY INSTRUCTIONS

INSTRUCTIONS PERTAINING TO RISK OF FIRE, ELECTRIC SHOCK, INJURY TO PERSONS OR DAMAGE TO PROPERTY  
GROUNDING INSTRUCTIONS

### **For all grounded, cord-connected disposers:**

This disposer must be grounded to reduce the risk of electric shock in the event of a malfunction or breakdown. Grounding provides a path of least resistance for electric current. Use of InSinkErator EZ Connect power cord is required. The plug must be plugged into an outlet that is properly installed and grounded in accordance with all local codes and ordinances.

### **For hardwire connected disposers:**

The disposer must be connected to a grounded, metal, permanent wiring system; or an equipment-grounding conductor must be run with the circuit conductors and connected to the InSinkErator EZ Connect adapter (T) provided.

## **WARNING**

Improper connection of the equipment-grounding conductor can result in a risk of electric shock. Check with a qualified electrician or serviceman if you are in doubt as to whether the disposer is properly grounded. If the EZ Connect power cord provided does not fit the outlet, do not modify the plug or attempt to force the plug into the outlet – have a proper outlet installed by a qualified electrician.

- This disposer must be properly grounded.
- Do not attach ground wire to gas supply line.
- Disconnect power before installing or servicing disposer.
- EZ Connect power cord must be inserted into 3-hole grounded receptacle.
- All wiring must comply with local electrical codes.
- Do not reconnect electrical current at main service panel until proper grounds are installed.

## **WARNING**

Personal Injury: Do not position your head or body under disposer; unit could fall during removal or installation.

## **NOTICE**

- Do not use plumber's putty on any other disposer connection other than sink flange. Do not use thread sealants or pipe dope. These may harm disposer and cause property damage.
- For models equipped with the Anti-Vibration Tailpipe Mount™, failure to use the spring load hose clamp provided voids the warranty.
- To properly drain and prevent standing water in the disposer when utilizing a straight pipe discharge tube, the tube connection opposite the disposer outlet must be lower, not higher, than the disposer outlet.

**WARNING-When** using electric appliances, basic precautions are always to be followed, including:

- Read all instructions before using the appliance.
- To reduce the risk of injury, close supervision is required when an appliance is used near children.
- Do not put fingers or hands into disposer.
- Turn the power switch to the off position before attempting to clear a jam or removing an object from the disposer.
- When attempting to loosen a jam in a waste disposer, use the wrenchette.
- When attempting to remove objects from a waste disposer, use long-handled tongs or pliers.
- Do not put the following into a disposer: clam or oyster shells, caustic drain cleaners or similar products, glass, china, or plastic, metal (such as bottle caps, steel shot, tin cans, or utensils), hot grease or other hot liquids.
- When not operating a disposer, leave the stopper in place to reduce the risk of objects falling into the disposer.
- This product is designed to dispose of normal household food waste; inserting materials other than food waste into disposer could cause personal injury and/or property damage.
- To reduce the risk of injury and/or property damage, do not use the sink containing the disposer for purposes other than food preparation (such as baby bathing or washing hair).
- Do not dispose of the following in the disposer: paints, solvents, household cleaners and chemicals, automotive fluids, plastic wrap.
- FIRE HAZARD: Do not store flammable items such as rags, paper or aerosol cans near disposer. Do not store or use gasoline or other flammable vapors and liquids in vicinity of disposer.
- LEAK HAZARD: Regularly inspect disposer and plumbing fittings for leaks, which can cause property damage and could result in personal injury.

## **OPERATING INSTRUCTIONS\*** (SAVE THESE INSTRUCTIONS)

1. Remove stopper from sink opening and run cold water.
2. Turn on disposer.
3. Slowly insert food waste into disposer. **WARNING!** Position stopper to minimize possible ejection of material while grinding.
4. After grinding is complete, turn disposer off and run water for a few seconds to flush drain line.

\* Refer to Cover Control Installation Guide for Cover Control operating instructions.

DO...

- First turn on cold water and then turn on the disposer. Continue running cold water for several seconds after grinding is completed to flush the drain line.
- Grind hard materials such as small bones, fruit pits, and ice. A scouring action is created by the particles inside

the grind chamber.

- Grind peelings from citrus fruits to freshen up drain smells.
- Use a disposer cleaner, degreaser, or deodorizer as necessary to relieve objectionable odors caused by grease build-up.

## **NOTICE**

Failure to flush the disposer properly may result in damage to the disposer and/or property damage.

## **DON'T...**

- Don't pour grease or fat down your disposer or any drain. It can build up in pipes and cause drain blockages. Put grease in a jar or can and dispose in the trash.
- Don't use hot water when grinding food waste. It is OK to drain hot water into the disposer between grinding periods.
- Don't fill disposer with a lot of vegetable peels all at once. Instead, turn the water and disposer on first and then feed the peels in gradually.\*
- Don't grind large amounts of egg shells or fibrous materials like corn husks, artichokes, etc., to avoid possible drain blockage.
- Don't turn off disposer until grinding is completed and only sound of motor and water is heard.

\*Cover Control user should refer to the Cover Control instruction manual.

## **USER MAINTENANCE INSTRUCTIONS**

### **CLEANING DISPOSER**

Over time, food particles may accumulate in the grind chamber and baffle.

An odor from the disposer is usually a sign of food buildup.

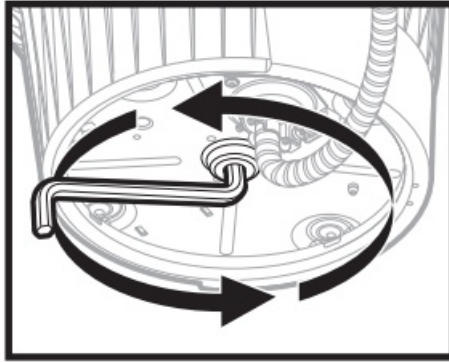
#### **To clean disposer:**

1. Place stopper in sink opening and fill sink halfway with warm water.
2. Mix 1/4 cup baking soda with water. Turn disposer on and remove stopper from sink at same time to wash away loose particles.
3. Remove Sink Baffle and clean by hand or in dishwasher. Do not operate disposer without Sink Baffle in place.

### **RELEASING DISPOSER JAM**

If motor stops while disposer is operating, disposer may be jammed. To release jam:

1. Turn off disposer and water.
2. Insert one end of wrenchette into center hole on bottom of disposer. Work wrenchette back and forth until it turns one full revolution.  
Remove wrenchette.
3. Reach into disposer with tongs and remove object(s).



4. Disposer is equipped with an automatic overload switch. If disposer is controlled by a wall switch, turn off wall switch and allow disposer to cool for a period of up to 20 minutes before turning back on. If disposer is controlled by a push button air switch, turn off and unplug disposer for a period of up to 20 minutes before plugging back in. (If motor remains inoperative, check service panel for tripped circuit breakers or blown fuses.)

## **WARRANTY**

This limited warranty is provided by InSinkErator, LLC, ("InSinkErator" or "Manufacturer" or "we" or "our" or "us") to the original consumer owner of the InSinkErator product with which this limited warranty is provided (the "InSinkErator Product"), and any subsequent owner of the residence in which the Product was originally installed ("Customer" or "you" or "your").

InSinkErator warrants to Customer that your InSinkErator Product will be free from defects in materials and workmanship, subject to the exclusions described below, for the warranty period, commencing on the later of: (a) the date your InSinkErator Product is originally installed, (b) the date of purchase, or (c) the date of manufacture as identified by your InSinkErator Product serial number. You will be required to show written documentation supporting (a) or (b). If you are unable to provide documentation supporting either (a) or (b), the Warranty Period commencement date will be determined by Manufacturer, in its sole and absolute discretion, based upon your InSinkErator Product serial number. What is Covered

This limited warranty covers defects in materials or workmanship, subject to the exclusions below, in InSinkErator Products used by a consumer Customer for residential use only, and includes all replacement parts and labor costs.

YOUR SOLE AND EXCLUSIVE REMEDY UNDER THIS LIMITED WARRANTY SHALL BE LIMITED TO REPAIR OR REPLACEMENT OF THE INSINKERATOR PRODUCT, PROVIDED THAT IF WE DETERMINE IN OUR SOLE DISCRETION THAT NEITHER REMEDY IS PRACTICABLE, WE MAY PROVIDE YOU A REFUND OF YOUR PURCHASE PRICE OR A CREDIT TOWARDS ANOTHER INSINKERATOR PRODUCT.

### **What is not Covered**

This limited warranty does not extend to and expressly excludes:

- Losses or damages or the inability to operate your InSinkErator Product resulting from conditions beyond the Manufacturer's control including, without limitation, accident, alteration, misuse, abuse, neglect, negligence (other than Manufacturer's), failure to install, maintain, assemble, or mount the InSinkErator Product in accordance with Manufacturer's instructions or local electrical and plumbing codes.
- Wear and tear expected to occur during the normal course of use, including without limitation, cosmetic rust, scratches, dents or comparable and reasonably expected losses or damages.

In addition to the above exclusions, this limited warranty does not apply to InSinkErator Products installed in a commercial or industrial application.

### **Disclaimer of Warranties**

THIS LIMITED WARRANTY IS THE SOLE AND EXCLUSIVE WARRANTY. NO OTHER EXPRESS WARRANTIES, WRITTEN OR VERBAL, AND NO IMPLIED WARRANTIES INCLUDING THE IMPLIED WARRANTIES OF MERCHANTABILITY AND FITNESS ARE GIVEN. No employee, agent, dealer, or other

person is authorized to alter this limited warranty or make any other warranty on behalf of Manufacturer. The terms of this limited warranty shall not be modified by the Manufacturer, the original owner, or their respective successors or assigns.

### **What we will do to Correct Problems**

If your InSinkErator Product does not operate in accordance with the documentation provided to you, or you have questions concerning your InSinkErator Product or how to determine when service is needed, please call the toll free InSinkErator AnswerLine® at 1 (800) 558-5700, or visit our website at [www.insinkerator.com](http://www.insinkerator.com).

You may also notify us at: InSinkErator Service Center, 4700 21st Street, Racine, Wisconsin 53406 USA.

The following information must be provided as part of your warranty claim: your name, address, phone number, your InSinkErator Product model and serial number, and if necessary, upon request, written confirmation of either: (a) the date shown on your installation receipt, or (b) the date shown on your purchase receipt.

Manufacturer or its authorized service representative will determine, in its sole and absolute discretion, if your InSinkErator Product is covered under this limited warranty. You will be given the contact information for your closest authorized InSinkErator Service Center. Please contact your InSinkErator Service Center directly to receive in home warranty repair or replacement service. Only an authorized InSinkErator service representative may provide warranty service.

InSinkErator is not responsible for warranty claims arising from work performed on your InSinkErator Product by anyone other than an authorized InSinkErator service representative.

If a covered claim is made during the Warranty Period, Manufacturer will, through its authorized service representative, either repair or replace your InSinkErator Product. Cost of replacement parts or a new InSinkErator Product, and cost of labor for repair or installation of the replacement InSinkErator Product are provided at no cost to you. Repair or replacement shall be determined by Manufacturer or its authorized service representative in their sole discretion. All repair and replacement services will be provided to you at your home. If Manufacturer determines that your InSinkErator Product must be replaced rather than repaired, the limited warranty on the replacement InSinkErator Product will be limited to the unexpired term remaining in the original Warranty Period.

This disposer is covered by Manufacturer's limited warranty. This limited warranty is void if you attempt to repair the InSinkErator Product. For service information, please visit [www.insinkerator.com](http://www.insinkerator.com) or call, toll free, 1-800-558-5700.

### **Limitation of Liability**

TO THE EXTENT PERMITTED BY LAW, IN NO EVENT SHALL MANUFACTURER OR ITS AUTHORIZED SERVICE REPRESENTATIVES BE LIABLE FOR ANY INCIDENTAL, SPECIAL, INDIRECT, OR CONSEQUENTIAL DAMAGES, INCLUDING ANY ECONOMIC LOSS, WHETHER RESULTING FROM NONPERFORMANCE, USE, MISUSE OR INABILITY TO USE THE INSINKERATOR PRODUCT OR THE MANUFACTURER'S OR ITS AUTHORIZED SERVICE REPRESENTATIVE'S NEGLIGENCE. MANUFACTURER SHALL NOT BE LIABLE FOR DAMAGES CAUSED BY DELAY IN PERFORMANCE AND IN NO EVENT, REGARDLESS OF THE FORM OF THE CLAIM OR CAUSE OF ACTION (WHETHER BASED IN CONTRACT, INFRINGEMENT, NEGLIGENCE, STRICT LIABILITY, OTHER TORT OR OTHERWISE), SHALL MANUFACTURER'S LIABILITY TO YOU EXCEED THE PRICE PAID BY THE ORIGINAL OWNER FOR THE INSINKERATOR PRODUCT.

The term "consequential" damages shall include, but not be limited to, loss of anticipated profits, business interruption, loss of use or revenue, cost of capital or loss or damage to property or equipment.

Some states do not allow the exclusion or limitation of incidental or consequential damages, so the above limitation may not apply to you. This limited warranty gives you specific legal rights and you may also have other rights which vary from state to state.

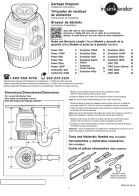


Food waste is roughly 80% water. By using your disposal regularly, you can help divert food waste from landfills

and reduce greenhouse gas emissions.  
Make sustainability a family affair by using your disposal.  
After all, the smallest changes can make the biggest impact.  
For U.S. [www.insinkerator.com/green](http://www.insinkerator.com/green)  
For Canada [www.insinkerator.ca](http://www.insinkerator.ca)

InSinkErator® may make improvements and/or changes in the specifications at any time, in its sole discretion, without notice or obligation and further reserves the right to change or discontinue models.  
The mounting collar configuration is a trademark of InSinkErator, LLC.

## Documents / Resources

	<a href="#">InSinkErator 79841-ISE Evolution Compact Garbage</a> [pdf] Instruction Manual Power 700, Power .75HP, Power 900, Power 15ss, Power 25ss, Power 1.0HP, Contractor 333, Contractor 1000, Evolution .75HP, Evolution 35ss, Evolution 1100, Evolution Septic, Guard, Evolution Cover Control, Evolution 45ss, Evolution 1300, Evolution 1.0HP, Evolution 55ss, Evolution 1500, PRO 750, PRO Cover Control, PRO 1000, PRO 1250, 79841-ISE, 79841-ISE Evolution Compact Garbage, Evolution Compact Garbage, Compact Garbage, Garbage
---	---

## References

-  [Leader in Garburators and Hot Water | InSinkErator CA](#)
-  [Garbage Disposals | Instant Hot Water Dispensers | InSinkErator US](#)
-  [Environment: Food Waste Diversion | InSinkErator | InSinkErator US](#)