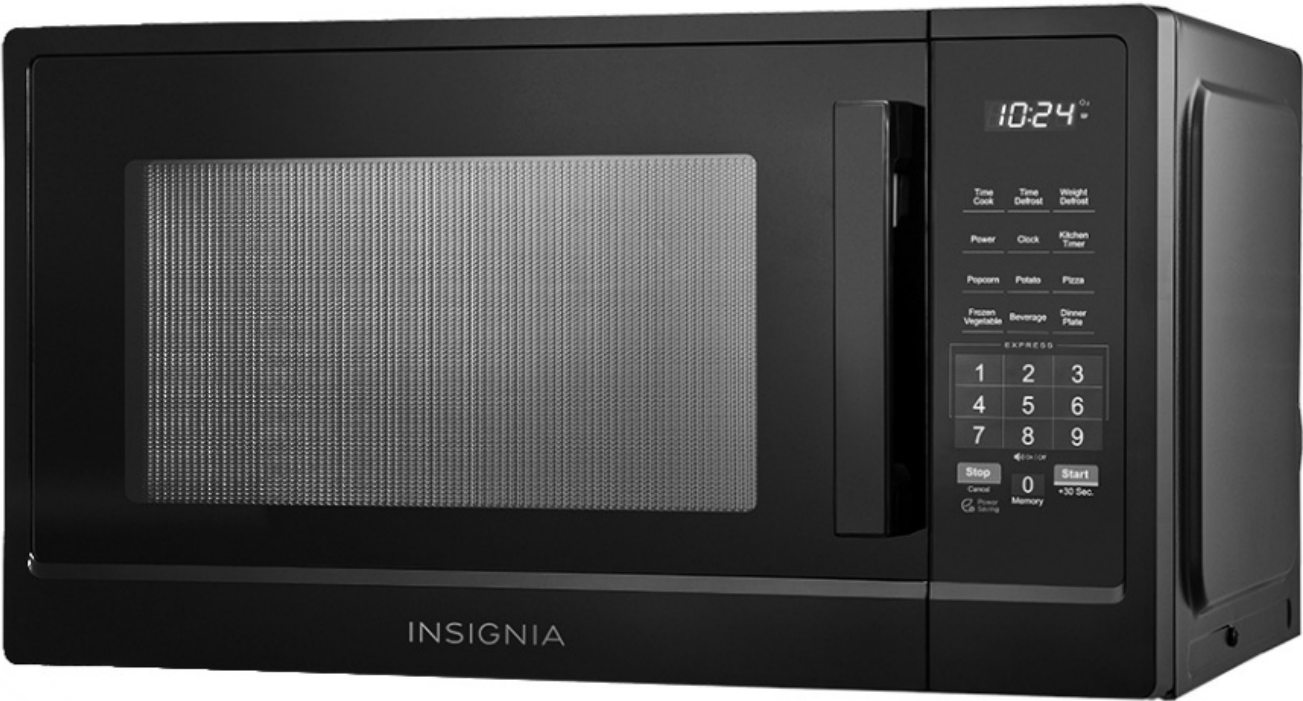


INSIGNIA NS-MW11BK5 Built In Microwave User Guide

[Home](#) » [Insignia](#) » INSIGNIA NS-MW11BK5 Built In Microwave User Guide 

INSIGNIA NS-MW11BK5 Built In Microwave



Contents

- 1 Introduction
- 2 SAFETY INFORMATION
- 3 IMPORTANT SAFETY INSTRUCTIONS
- 4 GROUNDING INSTRUCTIONS
- 5 RADIO INTERFERENCE
- 6 Package contents
- 7 Features
- 8 Setting up your microwave
- 9 Setting the clock and the timer
- 10 Cooking with your microwave
- 11 Defrosting in your microwave
- 12 Changing other microwave settings
- 13 Cleaning and maintaining your microwave
- 14 Troubleshooting
- 15 Specifications
- 16 ONE-YEAR LIMITED WARRANTY
- 17 Customers Support
- 18 Documents / Resources
 - 18.1 References
- 19 Related Posts

Introduction

Congratulations on your purchase of a high-quality Insignia product. Your NS-MW11BK5 represents the state of the art in microwave design and is designed for reliable and trouble-free performance.

SAFETY INFORMATION

PRECAUTIONS TO AVOID POSSIBLE EXPOSURE TO EXCESSIVE MICROWAVE ENERGY:

1. Do not attempt to operate this microwave with the door open because this can result in harmful exposure to microwave energy. It is important not to defeat or tamper with the safety interlocks.
2. Do not place any object between the front face and the door or allow soil or cleaner residue to accumulate on sealing surfaces.
3. Do not operate the microwave if it is damaged. It is particularly important that the microwave door closes properly and that there is no damage to the:
 - (a) DOOR (bent)
 - (b) HINGES and LATCHES (broken or loosened)
 - (c) DOOR SEALS and SEALING SURFACES
4. The microwave should not be adjusted or repaired by anyone except properly qualified service personnel.

IMPORTANT SAFETY INSTRUCTIONS

WARNING: To reduce the risk of burns, electric shock, fire, injury to persons, or exposure to excessive microwave energy when using your microwave, follow these basic safety precautions.

1. Read all instructions before using the microwave.
2. Read and follow the specific: PRECAUTIONS TO AVOID POSSIBLE EXPOSURE TO EXCESSIVE

MICROWAVE ENERGY: found on page 3.

3. As with any cooking appliances, close supervision is necessary to reduce the risk of a fire in the microwave cavity or when used by children.
4. To reduce the risk of fire in the microwave cavity:
 - Do not overcook food. Carefully attend the microwave when paper, plastic, or other combustible materials are placed inside the microwave to facilitate cooking.
 - Remove wire twist-ties and metal handles from paper or plastic containers/bags before placing them in the microwave.
 - If materials inside the microwave ignite, keep the microwave door closed. Turn the microwave off and unplug the microwave or shut off power at the fuse or circuit breaker panel.
 - Do not use the microwave cavity for storage purposes. Do not leave paper products, cooking utensils, or food in the cavity when not in use.
5. This microwave must be grounded. Connect only to a properly grounded outlet. See GROUNDING INSTRUCTIONS found on page 4.
6. Install or locate this appliance only in accordance with the provided installation instructions.
7. Some products, such as whole eggs and sealed containers (for example closed glass jars), are able to explode and should not be heated in this microwave.
8. Use this microwave only for its intended purpose, as described in this manual. Do not use corrosive chemicals or vapors in this microwave. This microwave is specifically designed to heat, cook, or dry food. It is not designed for industrial or laboratory use.
9. **HOT CONTENTS CAN CAUSE SEVERE BURNS. DO NOT ALLOW CHILDREN TO USE THE MICROWAVE.** Use caution when removing hot items. Do not operate this microwave if it has a damaged cord or plug, if it is not working properly, or if it has been damaged or dropped.
10. This microwave should be serviced only by qualified service technicians. Contact the nearest authorized service facility for examination, repair, or adjustment.
11. Do not cover or block any openings on the microwave.
12. Do not store or use this microwave outdoors.
13. Do not use this microwave near water (for example, near a kitchen sink, in a wet basement, near a swimming pool, or similar locations).
14. Do not immerse the cord or plug in water.
15. Keep the cord away from heated surfaces.
16. Do not let the cord hang over the edge of a table or counter.
17. When cleaning the surfaces of the door and the microwave that come together on closing the door, use only mild, nonabrasive soaps or detergents applied with a sponge or soft cloth.
18. Liquids, such as water, coffee, or tea can be overheated beyond the boiling point without appearing to be boiling. Visible bubbling or boiling when the container is removed from the microwave is not always present. **THIS COULD RESULT IN VERY HOT LIQUIDS SUDDENLY BOILING OVER WHEN THE CONTAINER IS DISTURBED OR A SPOON OR OTHER UTENSIL IS INSERTED INTO THE LIQUID.**
 - Do not overheat the liquid.
 - Stir the liquid both before and halfway through heating it.
 - Do not use straight-sided containers with narrow necks.
 - After heating, allow the container to stand in the microwave for a short time before removing the container.
 - Use extreme care when inserting a spoon or other utensil into the container.

WARNING: Handling the power cord on this microwave, or cords associated with accessories sold with this microwave, will expose you to lead, a chemical known to the state of California to cause cancer and birth defects or other reproductive harm. Wash your hands after handling.

SAVE THESE INSTRUCTIONS

GROUNDING INSTRUCTIONS

This appliance must be grounded. In the event of an electrical short circuit, grounding reduces the risk of electric shock by providing an escape wire for the electric current. This appliance is equipped with a cord having a grounding wire with a grounding plug. The plug must be plugged into an outlet that is properly installed and grounded.



DANGER – Electric Shock Hazard

Touching some of the internal components can cause serious personal injury. Do not disassemble this appliance.



WARNING – Electric Shock Hazard

Improper use of the grounding plug can result in electric shock. Do not plug into an outlet until the appliance is properly installed and grounded.

Consult a qualified electrician or serviceman if the grounding instructions are not completely understood, or if doubt exists as to whether the appliance is properly grounded.

1. A short power supply cord is provided to reduce the risks resulting from becoming entangled in or tripping over a longer cord.
2. Longer cord sets or extension cords are available and may be used if care is exercised in their use.
3. If a long cord or extension cord is used:
 - The marked electrical rating of the cord set or extension cord should be at least as great as the electrical rating of the appliance.
 - The extension cord must be a grounding-type 3-wire cord.
 - The longer cord should be arranged so that it will not drape over the counter top or tabletop where it can be pulled on by children or tripped over unintentionally.

RADIO INTERFERENCE

1. Operation of the microwave may cause interference to your radio, TV, or similar equipment.
2. When there is interference, it may be reduced or eliminated by taking the following measures:
 - Clean the door and the sealing surface of the microwave.
 - Reorient the receiving antenna of the radio or television.
 - Relocate the microwave with respect to the receiver.
 - Move the microwave away from the receiver.
 - Plug the microwave into a different outlet so that the microwave
 - This device complies with part 18 of the FCC Rules.

Cookware and cooking materials

WARNING: Tightly-closed containers could explode. Closed containers should be opened and plastic pouches

should be pierced before cooking.

Cookware and other materials must fit on the turntable. Always use oven mitts or pot holders because cookware may become hot.

See “Materials you can use” on page 5 and “Materials to be avoided” on page 5 as a guide, then test before using.

Cookware and Materials Test:

1. Fill a microwave-safe container with 1 cup (250 ml) of cold water, along with the cookware or materials in question.
2. Cook on maximum power for one minute. Do not exceed one minute cooking time.
3. Carefully feel the cookware or material. If the empty cookware or material is warm, do not use it for microwave cooking.

Materials you can use

| MATERIAL | REMARKS |
|-----------------------|-----------------------------------------------------------------------------------------------------------------------------------------------------------------------------------------------------------------------------------------------------------|
| Browning dish | Follow the manufacturer's instructions. The bottom of the browning dish must be at least 3/16-in. (5mm) above the turntable. Incorrect usage may cause the turntable to break. |
| Dinnerware | Use microwave-safe only. Follow the manufacturer's instructions. Do not use cracked or chipped dishes. |
| Glass jars | Always remove the lid. Use only to heat food until just warm. Most glass jars are not heat resistant and may break. |
| Glassware | Use heat-resistant oven glassware only. Make sure there is no metallic trim. Do not use cracked or chipped dishes. |
| Oven cooking bags | Follow the manufacturer's instructions. Do not close with a metal tie. Make slits to allow steam to escape. |
| Paper plates and cups | Use for short-term cooking/warming only. Do not leave the microwave unattended while cooking. |
| Paper towels | Use to cover food for reheating and absorbing fat. Use with supervision for short-term cooking only. |
| Parchment paper | Use as a cover to prevent splattering or a wrap for steaming. |
| Plastic | Use only if labeled “Microwave Safe.” Follow the manufacturer's instructions. Some plastic containers soften as the food inside gets hot. “Boiling bags” and tightly closed plastic bags should be slit, pierced, or vented, as indicated on the package. |
| Plastic wrap | Use microwave-safe only. Use to cover food during cooking to retain moisture. Do not allow plastic wrap to touch food. |
| Thermometers | Use microwave-safe only (such as meat and candy thermometers). |
| Wax paper | Use as a cover to prevent splattering and retain moisture. |

Materials to be avoided

| MATERIAL | REMARKS |
|---------------------------------|------------------------------------------------------------------------------------------|
| Aluminum foil | May cause an electric spark. Use a microwave-safe dish instead. |
| Aluminum tray | May cause an electric spark. Use a microwave-safe dish instead. |
| Food carton with metal handle | May cause an electric spark. Use a microwave-safe dish instead. |
| Metal or metal trimmed utensils | Metal shields the food from microwave energy. The metal trim may cause arcing. |
| Metal twist ties | May cause an electric spark and could cause a fire in the microwave. |
| Paper bags | May cause a fire in the microwave. |
| Plastic foam | Plastic foam may melt or contaminate the liquid inside when exposed to high temperature. |
| Wood | Wood will dry out when used in the microwave and may split or crack. |

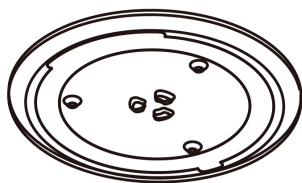
Package contents

- 1.1 Cu. Ft. Microwave
- Glass turntable
- Turntable ring assembly
- User Guide

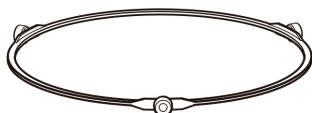
Unpacking your microwave

Remove your microwave and all materials from the box and microwave cavity. Your microwave comes with the following accessories:

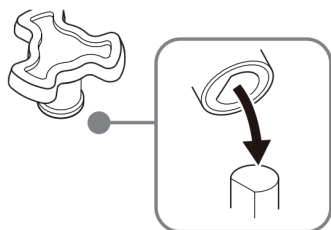
- Glass tray



- Turntable ring assembly



- Turntable shaft



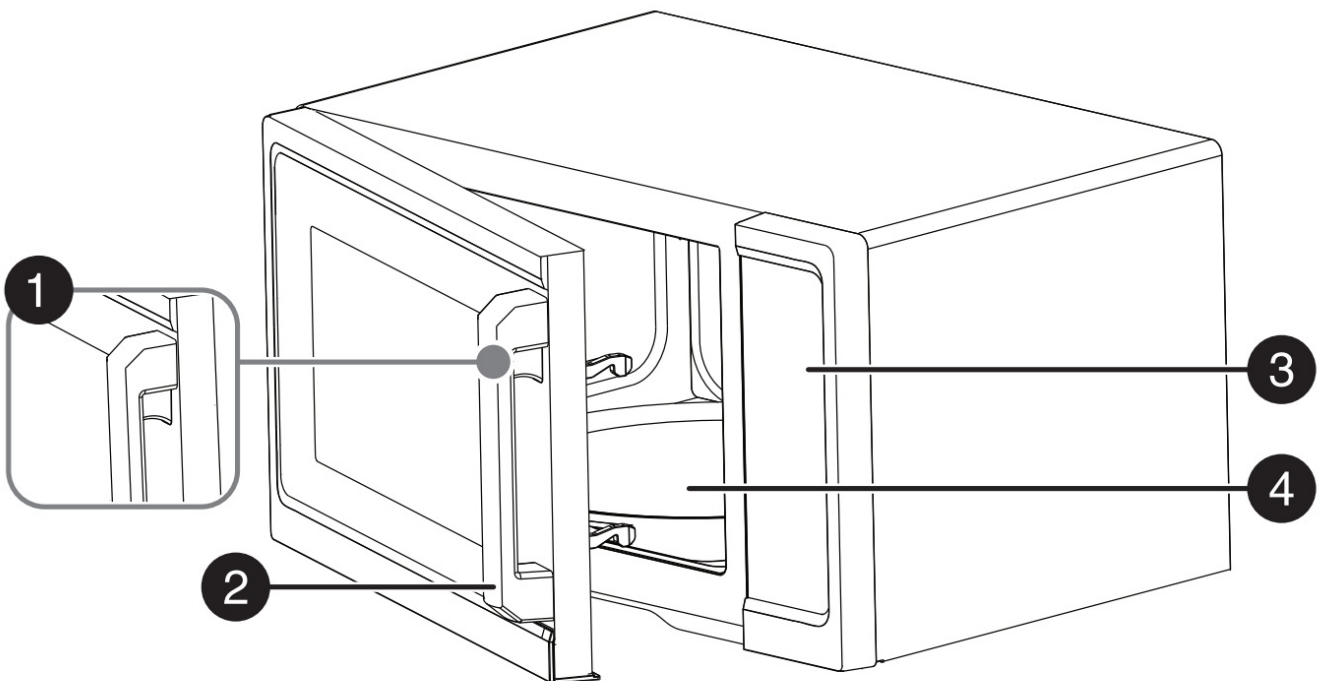
- User Guide



Features

- Spacious 1.1 cu. ft. design reheats all your favorite meals
- 1,000W with 11 power levels cook or reheat meat, vegetables, pasta, and more
- 9 preset functions heat baked potatoes, pizza, and more
- 12.4-inch (31.5 cm) glass turntable helps distribute heat evenly
- Internal light lets you keep an eye on your meal's progress
- Black finish matches your existing kitchen décor

Microwave



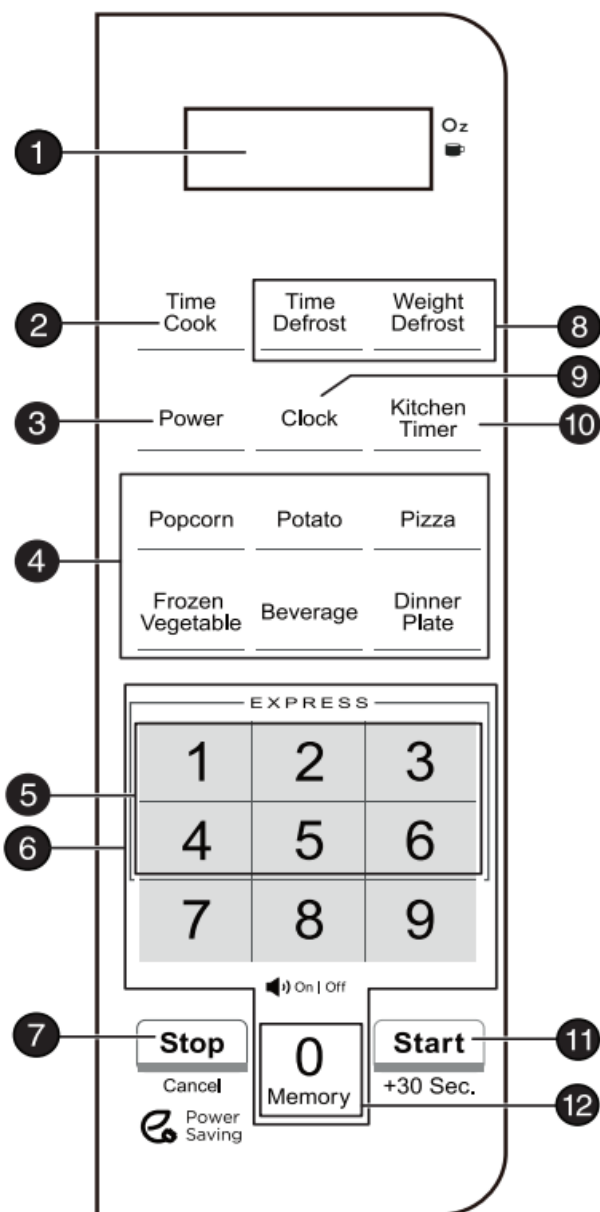
| # | ITEM | DESCRIPTION |
|---|---------------------|-------------------------------------------------------------------------|
| 1 | Door release button | Press to release the door, then pull the handle to open. |
| 2 | Door handle | Grip and pull to open the door, after pressing the door release button. |
| 3 | Control panel | Use to set cooking times and enter other information as needed. |
| 4 | Glass turntable | Allows food to cook evenly. |

Opening the door for the first time

1. Press upward on the button on the inside top of the door handle.
2. Pull the door outward to swing open from right to left.

Control panel

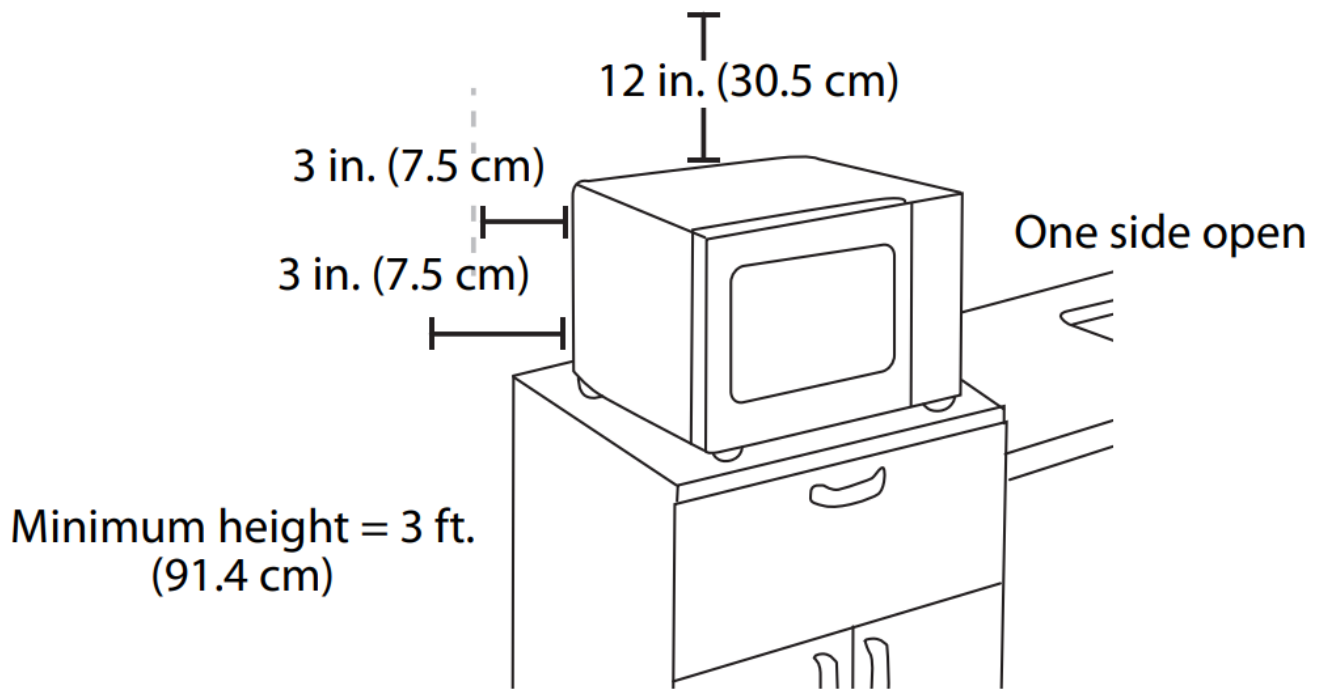
| # | ITEM | DESCRIPTION |
|----|------------------------|-----------------------------------------------------------------------------------------------------------------------------------------------------------|
| 1 | Display | In standby mode, shows the time. In cooking mode, shows cooking time, weight, and other information. |
| 2 | Time Cook | Press to set the amount of time you want to heat your food, then press the number buttons to enter the time you want (up to 99 minutes and 99 seconds). |
| 3 | Power | Press to set the power level of your microwave, then press the number buttons to set the level you want (0-10). |
| 4 | Auto menu | Press one of these buttons to automatically cook the item indicated. See Cooking with the auto menu on page 9. |
| 5 | Express cook | In standby mode, press to quickly start cooking for 1 to 6 minutes. See Cooking quickly on page 9. |
| 6 | Number pad | Press to enter cook time, defrost time, clock time, and other information. |
| 7 | Stop/ Cancel | Press to stop the cooking process. Press again to cancel the cooking operation. |
| 8 | Time Defrost | Press, then enter the time you want for an item to defrost. See Defrosting by time on page 11. |
| | Weight Defrost | Press, then enter the weight of the item you want to defrost. The cooking time is set automatically. See Defrosting by weight on page 11. |
| 9 | Clock | Press to set or check the clock. See Setting the clock on page 9. |
| 10 | Kitchen Timer | Press this button, then enter the time you want to count down. See Using the kitchen timer on page 9. |
| 11 | Start/ +30 Sec. | In standby mode, press this button to begin cooking. While cooking, press this button to add 30 seconds to cooking time. |
| 12 | 0/Memory | Press repeatedly to choose a memorized procedure. |



Setting up your microwave

1. Remove all packing material, protective film, and accessories. Do not remove the cream-colored plastic cover that is attached to the microwave cavity to protect the magnetron.
2. Check for any damage such as dents or a broken door. Do not use the microwave if it is damaged.
3. Select a level surface that provide enough open space for the vents:

CAUTION: Do not install the microwave over a range cooktop or other heat-producing appliance. Installing over a heat source can damage your microwave and will void your warranty.

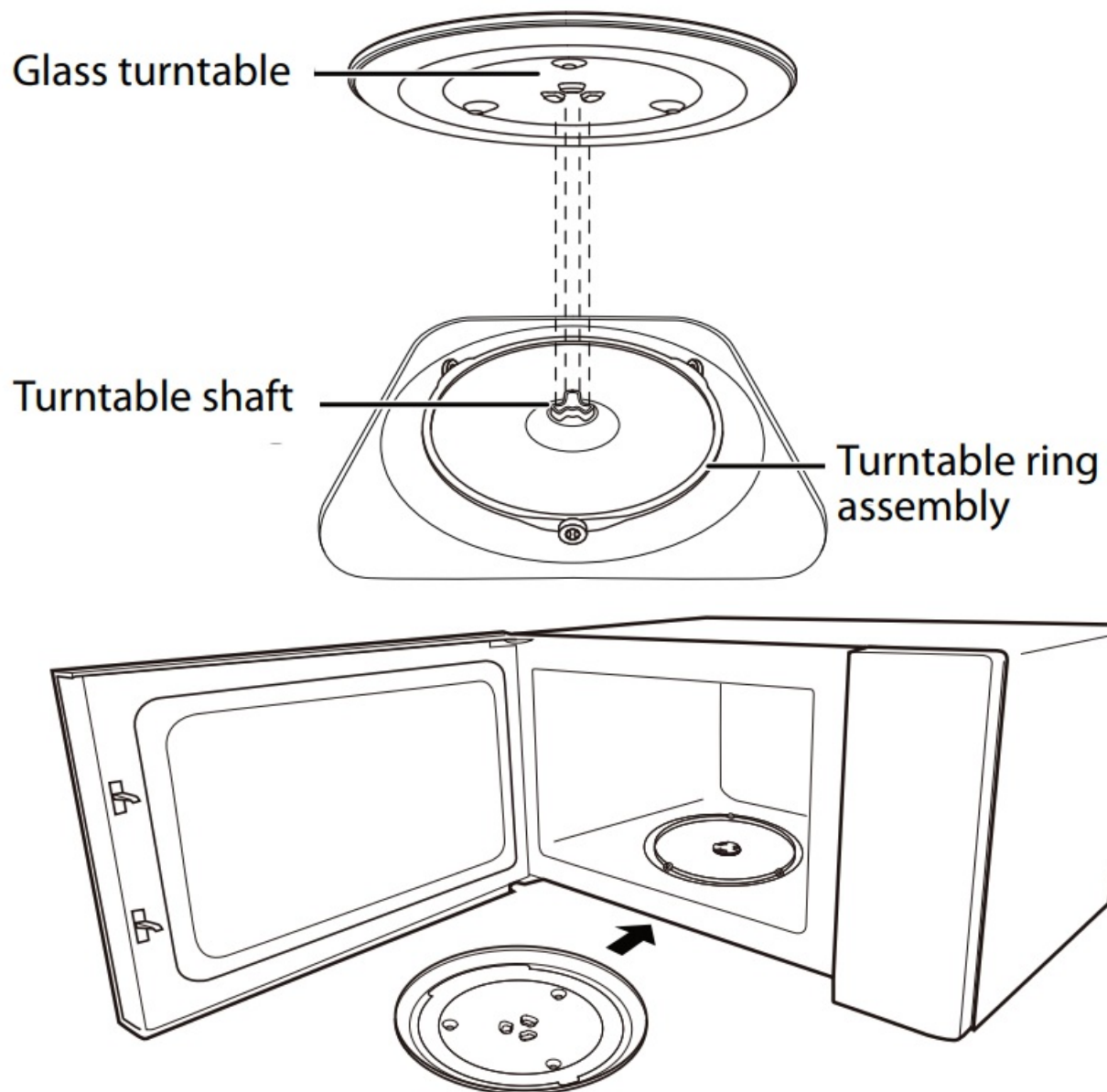


4. Plug your microwave into a power outlet.

Installing the turntable

Note: The turntable is shipped inside the microwave cavity.

1. Remove all packing materials from your microwave, then remove the shipping tape from the turntable shaft.
2. Clean the cooking compartment and the accessories.
3. Place the turntable ring assembly into the round depression in the bottom of your microwave so that it turns freely.
4. Place the glass turntable (flat side up) on the turntable ring so that the hub engages the turntable shaft in the bottom of your microwave. The glass turntable should not turn freely when it is correctly installed.



Notes:

- Never use your microwave without the glass turntable and turntable ring.
- Never place the glass tray into your microwave upside down. The glass tray should never be restricted.
- Always place all food and containers of food on the glass tray for cooking.
- Do not restrict the movement of the turntable.
- If the glass tray or turntable ring cracks or breaks, contact your nearest authorized service center.

Setting the clock and the timer

Setting the clock

1. Press Clock once. Your display shows "12:00".
2. Use the number keys to enter the current time, then press Clock to save the setting. The clock is set.

Notes:

- While setting the clock, if you press Stop/Cancel, or if you don't press a button within 30 seconds, the microwave will go back to its last setting.

Using the kitchen timer

1. Press Kitchen Timer once. The display shows "00:00" and the first digit flashes.
2. Use the number pad to enter the time (up to 99 minutes and 99 seconds), then press Start/+30 Sec. The timer begins counting down. When the time reaches 0, the buzzer sounds.

Cooking with your microwave

Microwave cooking

1. Press Time Cook once. The display shows "00:00".
2. Press the number keys to enter the cooking time that you want up to a maximum of 99:99.
Note: For example, to enter 3 minutes and 15 seconds, press 3, 1, and then 5.
3. Press Power once. "PL10" appears on the display.
4. Press the number keys to enter the power level that you want (0-10). The default power level is 100% (PL10).

| Level | 10 | 9 | 8 | 7 | 6 | 5 | 4 | 3 | 2 | 1 | 0 |
|---------|------|-----|-----|-----|-----|-----|-----|-----|-----|-----|-----|
| Power | 100% | 90% | 80% | 70% | 60% | 50% | 40% | 30% | 20% | 10% | 0% |
| Display | PL10 | PL9 | PL8 | PL7 | PL6 | PL5 | PL4 | PL3 | PL2 | PL1 | PL0 |

5. Press Start/+30 Sec. to begin heating. The buzzer rings when the microwave is finished.

Notes:

- When setting the microwave, if the Stop/Cancel button is pressed or if there is no operation within 30 seconds, the microwave goes back to the previous setting automatically.
- If "PL0" is selected, the microwave fan turns on with 0% power. You can use this level to remove an odor in the microwave.
- When setting the microwave, press Power at any time to change the power setting. You can enter the number of the power setting you want. The microwave cooks at the new power setting for the remainder of the cook time.

Cooking quickly

Notes:

- When setting the microwave, if the Stop/Cancel button is pressed or if there is no operation within 30 seconds, the microwave goes back to the previous setting automatically.
- If "PL0" is selected, the microwave fan turns on with 0% power. You can use this level to remove an odor in the microwave.
- When setting the microwave, press Power at any time to change the power setting. You can enter the number

of the power setting you want. The microwave cooks at the new power setting for the remainder of the cook time.

Cooking quickly

- 1. Press Start/+30 Sec. to instantly cook something at 100% power for 30 seconds.
OR
Press 1-6 on the number pad to instantly cook something at 100% power for 1-6 minutes.
- 2. To increase the time in 30 second increments, press Start/+30 Sec. repeatedly. The maximum cooking time is 99 minutes and 99 seconds.

Note: You cannot increase cook time when using Weight Defrost, or auto-menu items.

Cooking with the auto menu

Auto menus

| BUTTON | AMOUNT | DISPLAY |
|------------------|--------------------------|-----------------|
| | 3.0 oz. | 3.0— |
| Popcorn | 3.5 oz. 1.75 oz. | 3.5— 1.75— |
| | 1 (about 8 oz.) | 1 |
| Potato | 2 3 | 2 3 |
| Pizza | 4 oz. 8 oz. 14 oz. | 4— 8— 14— |
| Frozen Vegetable | 4 oz. 8 oz. 16 oz. | 4— 8— 16— |

| | | |
|--------------|---------------------------|------------------|
| Beverage | 2 cups 3 cups | 2 3 |
| Dinner Plate | 9 oz. 12 oz. 18 oz. | 9— 12— 18— |

Popcorn

- 1. Press Popcorn repeatedly until the weight of your popcorn bag (3.0, 3.5, or 1.75 ounces) is shown on the display.
- 2. Press Start/+30 Sec. to start. The buzzer sounds once, then cooks your popcorn. When cooking is complete, there will be a beep and “End” will appear on the display. If the door is not opened, or the Stop/Cancel button is not pressed within 9 minutes, your microwave will sound two beeps every 3 minutes. After 9 minutes, your

microwave will return to standby mode.

Potato

1. Press Potato repeatedly until the number of potatoes you're cooking (1-3) is shown on the display.

Note: Each potato is assumed to be 8 oz. (227 g) If your potato is large, select the amount based on the potato's weight.

| AMOUNT | WEIGHT (APPROX.) |
|------------|------------------|
| 1 potato | 8 oz. (227 g) |
| 2 potatoes | 16 oz. (453 g) |
| 3 potatoes | 24 oz. (680 g) |

2. Press Start/+30 Sec. to start. The buzzer sounds once, then cooks your potato. When cooking is complete, there will be a beep and "End" will appear on the display. If the door is not opened, or the Stop/Cancel button is not pressed within 9 minutes, your microwave will sound two beeps every 3 minutes. After 9 minutes, your microwave will return to standby mode.

Pizza

1. Press Pizza repeatedly until the weight of your food (4.0, 8.0, or 14.0 ounces) is shown on the display.
2. Press Start/+30 Sec. to start. The buzzer sounds once, then heats your pizza. When cooking is complete, there will be a beep and "End" will appear on the display. If the door is not opened, or the Stop/Cancel button is not pressed within 9 minutes, your microwave will sound two beeps every 3 minutes. After 9 minutes, your microwave will return to standby mode.

Frozen vegetables

1. Press Frozen Vegetable repeatedly until the number weight of your vegetables (4.0, 8.0, or 16.0 ounces) is shown on the display.
2. Press Start/+30 Sec. to start. The buzzer sounds once, then cooks your vegetables. When cooking is complete, there will be a beep and "End" will appear on the display. If the door is not opened, or the Stop/Cancel button is not pressed within 9 minutes, your microwave will sound two beeps every 3 minutes. After 9 minutes, your microwave will return to standby mode.

Beverages

1. Press Beverage repeatedly until the number of cups (1-3) is shown on the display.
2. Press Start/+30 Sec. to start. The buzzer sounds once, then heats your drink. When cooking is complete, there will be a beep and "End" will appear on the display. If the door is not opened, or the Stop/Cancel button is not pressed within 9 minutes, your microwave will sound two beeps every 3 minutes. After 9 minutes, your microwave will return to standby mode.

Dinner plate

1. Press Dinner Plate repeatedly until the weight of your food (9.0, 12.0, or 18.0 ounces) is shown on the display.
2. Press Start/+30 Sec. to start. The buzzer sounds once, then heats your food. When cooking is complete, there will be a beep and "End" will appear on the display. If the door is not opened, or the Stop/Cancel button is not pressed within 9 minutes, your microwave will sound two beeps every 3 minutes. After 9 minutes, your microwave will return to standby mode.

Using a memorized procedure:

Memorized procedures let you save heating operations (cook time and power level) that you use often. You must save a memorized procedure before using this feature. You can save three procedures. One of these procedures can be a multi-stage procedure.

1. Press 0/Memory repeatedly to choose a memorized number (1 through 3) that you want to assign to the procedure.
2. Press Time Cook, then use the number pad to enter the cook time you want.
Note: For example, to enter 3 minutes and 15 seconds, press 3, 1, and then 5.
3. Press Power, then enter the power level that you want (0 through 10). The default power level is 100% (PL10).

| Level | 10 | 9 | 8 | 7 | 6 | 5 | 4 | 3 | 2 | 1 | 0 |
|---------|------|-----|-----|-----|-----|-----|-----|-----|-----|-----|-----|
| Power | 100% | 90% | 80% | 70% | 60% | 50% | 40% | 30% | 20% | 10% | 0% |
| Display | PL10 | PL9 | PL8 | PL7 | PL6 | PL5 | PL4 | PL3 | PL2 | PL1 | PL0 |

4. (Optional) If you want to add a second stage, repeat steps 2 and 3. You can only add two stages to a memorized procedure.
5. Press Start/+30sec.. Your microwave beeps and the display shows the memorized procedure number.
6. Press Start/+30sec. again to run the procedure.

Notes:

- If your microwave loses power, it forgets your memorized procedures.
- Auto menu functions cannot be set as memorized procedures.

Multi-stage cooking

You can set up two stages of cooking (maximum). For example, you can set up one stage for defrosting and one stage for cooking. In this example, using the following steps, we set up a defrost time of five minutes at 80% power and 10 minutes of cooking at 60% power;

1. Press Time Defrost once, then press "5", "0", "0" to set the cooking time.
2. Press Power once, then press 8 to select 80% power.
3. Press Time Cook, then press 1, 0, 0, 0 to set the cooking time.
4. Press Power again, then press 6 to select 60% power.
5. Press Start/+30sec. to start cooking. When cooking is complete, there will be a beep and "End" will appear on

the display. If the door is not opened or the Stop/Cancel button is not pressed within 9 minutes, your microwave will sound two beeps every 3 minutes. After 9 minutes, your microwave will return to standby mode.

Defrosting in your microwave

Defrosting by weight

1. Press Weight Defrost. The display shows “dEF1”.
2. Use the number pad to enter the weight of the item to be defrosted (in ounces). The input weight must be between 4 to 100 ounces.
3. Press Start/+30 Sec. to start defrosting. The remaining cooking time is displayed.

Defrosting by time

1. Press Time Defrost. The display shows “dEF2”.
2. Press the number buttons to input the defrosting time you want. The time range maximum is 99:99.
3. The default microwave power for time defrost is power level 3. If you want to change the power level, press Power once. The display shows “PL 3.”
4. Press the number button of the power level you want.
5. Press Start/+30 Sec. to start defrosting. The remained cooking time is displayed.

Note: Your microwave beeps and displays “turn” during the defrost operation to remind you to turn the food over. If you do not open your microwave to turn the food, the defrost operation continues.

Changing other microwave settings

Muting your microwave

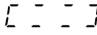
To mute or unmute your microwave, press and hold the 8 button for three seconds while in standby mode. The microwave beeps and mutes or unmutes.

Note: No operations can make sound while the microwave is muted.

Using power saving mode

While in standby mode, press Stop/Cancel briefly to turn off the display. Press any key or open the door to cancel ECO mode.

Using the child lock

- To lock the microwave, press and hold Stop/Cancel for three seconds while in standby mode. The microwave beeps and a box  appears on the display.

Note: The display won't show the time while the microwave is locked.

- To unlock the microwave, press and hold Stop/Cancel for three seconds until the microwave beeps then the display goes back to standby mode.

Checking the time or power level

- To check the time while cooking a meal, press Clock. The display shows the current time for 3 seconds, then returns to the cooking time remaining.
- To check the power level while cooking a meal, press Power. The display shows the power level being used for three seconds, then returns to the cooking time remaining.

Note: Press Power at any time to change the power setting. Enter the number of the new power setting you want. Your microwave cooks at the new power setting for the remainder of the cook time. You cannot change the power setting for time defrost, weight defrost, or auto-menu items.

Cleaning and maintaining your microwave

Cleaning the outside of your microwave

Exterior

The outside surface is precoated plastic. Clean the outside with mild soap and water, then rinse and dry with a soft cloth. Do not use any type of household or abrasive cleaner.

Door

Wipe the window on both sides with a damp cloth to remove any spills or spatters. Metal parts are easier to maintain if wiped frequently with a damp cloth. Avoid the use of spray and other harsh cleaners as they may stain, streak, or dull the door surface.

Control panel

If the control panel is dirty, open the microwave door before cleaning. Wipe the panel with a cloth dampened slightly with water only. Dry with a soft cloth. Do not scrub or use any sort of chemical cleaners. Close the door and press Stop/Cancel to clear any buttons you may have pressed.

Cleaning the inside of your microwave

Interior

Wipe with a soft cloth and warm water. Do not use abrasive or harsh cleaners or scouring pads. For baked-on food, use baking soda or a mild soap, then rinse thoroughly with hot water.

Waveguide cover

The waveguide cover is located on the side wall inside the microwave cavity. It is made from mica so requires special care. Keep the waveguide cover clean to assure good microwave performance. Carefully wipe with a damp cloth any food spatters from the surface of the cover immediately after they occur. Built-up splashes may overheat and cause smoke or possibly catch fire. **DO NOT REMOVE THE WAVEGUIDE COVER.**

Removing odors

Occasionally, a cooking odor may remain in the microwave. To remove, combine one cup (.25 L) water, grated peel and juice of one lemon, and several whole cloves in a two-cup (.5 L) glass measuring cup. Boil for several minutes using 100% power, then let it cool in the microwave. Wipe the interior with a soft cloth.

Turntable

Remove the turntable and wash it in mild, sudsy water. For stubborn stains, use a mild cleanser and non-abrasive scouring sponge. You can also wash them in the top rack of a dishwasher.

The turntable motor shaft is not sealed, so excess water or spills should be wiped up immediately.

Troubleshooting

If you have a problem with your microwave, review the following chart for a possible solution. If your microwave still doesn't work correctly, contact the nearest authorized service center.

| PROBLEM | POSSIBLE SOLUTION |
|-------------------------------------|-----------------------------------------------------------------------------------------|
| My microwave won't start | Plug the electrical cord into a power outlet. |
| | Close the door and try again. |
| Arching or sparking in my microwave | Use only microwave-safe materials. See Materials you can use on page 5. |
| | Don't operate your microwave when it's empty. |
| | Clean your microwave with a wet towel. |
| Unevenly cooked foods | Use only microwave-safe materials. See Materials you can use on page 5. |
| | Defrost the food completely before cooking it. |
| | Use the correct cooking time and power level. |
| | Turn or stir the food intermittently to ensure even cooking. |
| Overcooked foods | Use the correct cooking time and power level. |
| Undercooked foods | Use only microwave-safe materials. See Materials you can use on page 5. |
| | Defrost the food completely before attempting to cook it. |
| | Use the correct cooking time and power level. |
| | Make sure that the air vents aren't blocked or restricted. |
| Incorrect defrosting | Use only microwave-safe materials. See Materials you can use on page 5. |
| | Use the correct cooking time and power level. |
| | Turn or stir the food intermittently to ensure even cooking. |

Obtaining replacement parts

Call Insignia Customer Service at 1-[877-467-4289](tel:877-467-4289).

Specifications

| | |
|---------------------------------|------------------------------------------------------|
| Model | NS-MW11BK5 |
| Rated voltage | 120VAC, 60Hz |
| Rated input power | 1600W |
| Rated output power | 1000W |
| Microwave capacity | 1.1 cu. ft. (31 L) |
| Turntable diameter | 12.4 in. (31.5 cm) |
| External dimensions (H x W x D) | 11.83 x 20.57 x 16.32 in. (30.04 x 52.26 x 41.46 cm) |
| Internal dimensions (H x W x D) | 9.9 x 13.9 x 14 in. (25.25 x 35.4 x 35.7 cm) |
| Power cord length | 39.4 in. (1 m) |
| Net weight | 30.8 lbs. (13.97 kg) |

ONE-YEAR LIMITED WARRANTY

Definitions:

The Distributor* of Insignia branded products warrants to you, the original purchaser of this new Insignia-branded product ("Product"), that the Product shall be free of defects in the original manufacturer of the material or workmanship for a period of one (1) year from the date of your purchase of the Product ("Warranty Period"). For this warranty to apply, your Product must be purchased in the United States or Canada from a Best Buy branded retail store or online at www.bestbuy.com or www.bestbuy.ca and is packaged with this warranty statement.

How long does the coverage last?

The Warranty Period lasts for 1 year (365 days) from the date you purchased the Product. Your purchase date is printed on the receipt you received with the Product.

What does this warranty cover?

During the Warranty Period, if the original manufacture of the material or workmanship of the Product is determined to be defective by an authorized Insignia repair center or store personnel, Insignia will (at its sole option): (1) repair the Product with new or rebuilt parts; or (2) replace the Product at no charge with new or rebuilt comparable products or parts. Products and parts replaced under this warranty become the property of Insignia and are not returned to you. If service of Products or parts are required after the Warranty Period expires, you must pay all labor and parts charges. This warranty lasts as long as you own your Insignia Product during the Warranty Period. Warranty coverage terminates if you sell or otherwise transfer the Product.

How to obtain warranty service?

If you purchased the Product at a Best Buy retail store location or from a Best Buy online website (www.bestbuy.com or www.bestbuy.ca), please take your original receipt and the Product to any Best Buy store. Make sure that you place the Product in its original packaging or packaging that provides the same amount of protection as the original packaging.

To obtain warranty service, in the United States and Canada call 1-[877-467-4289](tel:877-467-4289). Call agents may diagnose and correct the issue over the phone.

Where is the warranty valid?

This warranty is valid only in the United States and Canada at Best Buy branded retail stores or websites to the original purchaser of the product in the country where the original purchase was made.

What does the warranty not cover?

This warranty does not cover:

- Food, beverage, and/or medicine loss/spoilage.
- Customer instruction/education
- Installation
- Set up adjustments
- Cosmetic damage
- Damage due to weather, lightning, and other acts of God, such as power surges
- Accidental damage
- Misuse
- Abuse
- Negligence
- Commercial purposes/use, including but not limited to use in a place of business or in communal areas of a multiple dwelling condominium or apartment complex, or otherwise used in a place of other than a private home.
- Modification of any part of the Product, including the antenna
- Display panel damaged by static (non-moving) images applied for lengthy periods (burn-in).
- Damage due to incorrect operation or maintenance
- Connection to an incorrect voltage or power supply
- Attempted repair by any person not authorized by Insignia to service the Product
- Products sold "as is" or "with all faults"
- Consumables, including but not limited to batteries (i.e. AA, AAA, C etc.)
- Products where the factory applied serial number has been altered or removed
- Loss or Theft of this product or any part of the product
- Display panels containing up to three (3) pixel failures (dots that are dark or incorrectly illuminated) grouped in an area smaller than one tenth (1/10) of the display size or up to five (5) pixel failures throughout the display. (Pixel based displays may contain a limited number of pixels that may not function normally.)
- Failures or Damage caused by any contact including but not limited to liquids, gels or pastes.

REPAIR REPLACEMENT AS PROVIDED UNDER THIS WARRANTY IS YOUR EXCLUSIVE REMEDY FOR BREACH OF WARRANTY. INSIGNIA SHALL NOT BE LIABLE FOR ANY INCIDENTAL OR CONSEQUENTIAL DAMAGES FOR THE BREACH OF ANY EXPRESS OR IMPLIED WARRANTY ON THIS PRODUCT, INCLUDING, BUT NOT LIMITED TO, LOST DATA, LOSS OF USE OF YOUR PRODUCT, LOST BUSINESS OR LOST PROFITS. INSIGNIA PRODUCTS MAKES NO OTHER EXPRESS WARRANTIES WITH RESPECT TO THE PRODUCT, ALL EXPRESS AND IMPLIED WARRANTIES FOR THE PRODUCT, INCLUDING BUT NOT LIMITED TO ANY IMPLIED WARRANTIES OF AND CONDITIONS OF MERCHANTABILITY AND FITNESS FOR A PARTICULAR PURPOSE, ARE LIMITED IN DURATION TO THE WARRANTY PERIOD SET FORTH ABOVE AND NO WARRANTIES, WHETHER EXPRESS OR IMPLIED, WILL APPLY AFTER THE WARRANTY PERIOD. SOME STATES, PROVINCES AND JURISDICTIONS DO NOT ALLOW LIMITATIONS ON HOW LONG AN IMPLIED WARRANTY LASTS, SO THE ABOVE LIMITATION MAY NOT APPLY TO YOU. THIS WARRANTY GIVES YOU SPECIFIC LEGAL RIGHTS, AND YOU MAY ALSO HAVE OTHER RIGHTS, WHICH VARY FROM STATE TO STATE OR PROVINCE TO PROVINCE.

Customers Support

Contact Insignia:

1-[877-467-4289](tel:877-467-4289)

www.insigniaproducts.com

INSIGNIA is a trademark of Best Buy and its affiliated companies.

*Distributed by Best Buy Purchasing, LLC

7601 Penn Ave South, Richfield, MN 55423 U.S.A.

©2024 Best Buy. All rights reserved.

For product inquiries, please contact us with the information below:

1-[877-467-4289](tel:877-467-4289)

www.insigniaproducts.com

INSIGNIA is a trademark of Best Buy and its affiliated companies.


Distributed by Best Buy Purchasing, LLC

7601 Penn Ave South, Richfield, MN 55423 U.S.A.

©2024 Best Buy. All rights reserved.



Documents / Resources

| | |
|------------------------------------------------------------------------------------------------------------------|-------------------------------------------------------------------------------------------------------------------------------------------------------------|
|  <p>1.1 Cu. Ft. Microwave</p> | <p>INSIGNIA NS-MW11BK5 Built In Microwave [pdf] User Guide NS-MW11BK5 Built In Microwave, NS-MW11BK5, Built In Microwave, Microwave</p> |
|------------------------------------------------------------------------------------------------------------------|-------------------------------------------------------------------------------------------------------------------------------------------------------------|

References

- [User Manual](#)

[Manuals+](#), [Privacy Policy](#)

This website is an independent publication and is neither affiliated with nor endorsed by any of the trademark owners. The "Bluetooth®" word mark and logos are registered trademarks owned by Bluetooth SIG, Inc. The "Wi-Fi®" word mark and logos are registered trademarks owned by the Wi-Fi Alliance. Any use of these marks on this website does not imply any affiliation with or endorsement.