



INSIGNIA NS-PNK6811/ NS-PNK6811-C Wireless Keyboard with Touch Pad Quick Setup Guide

[Home](#) » [Insignia](#) » INSIGNIA NS-PNK6811/ NS-PNK6811-C Wireless Keyboard with Touch Pad Quick Setup Guide 

INSIGNIATM

Quick Setup Guide | NS-PNK6811/NS-PNK6811-C
Wireless Keyboard with TouchPad

Contents

- [1 PACKAGE CONTENTS](#)
- [2 SYSTEM REQUIREMENTS](#)
- [3 FEATURES](#)
- [4 INSTALLING THE USB NANO RECEIVER AND BATTERIES](#)
- [5 USING THE TOUCHPAD](#)
- [6 CLEANING YOUR KEYBOARD](#)
- [7 SPECIFICATIONS](#)
- [8 TROUBLESHOOTING](#)
- [9 LEGAL NOTICES](#)
- [10 ONE-YEAR LIMITED WARRANTY](#)
- [11 CONTACT INSIGNIA](#)
- [12 Related Posts](#)

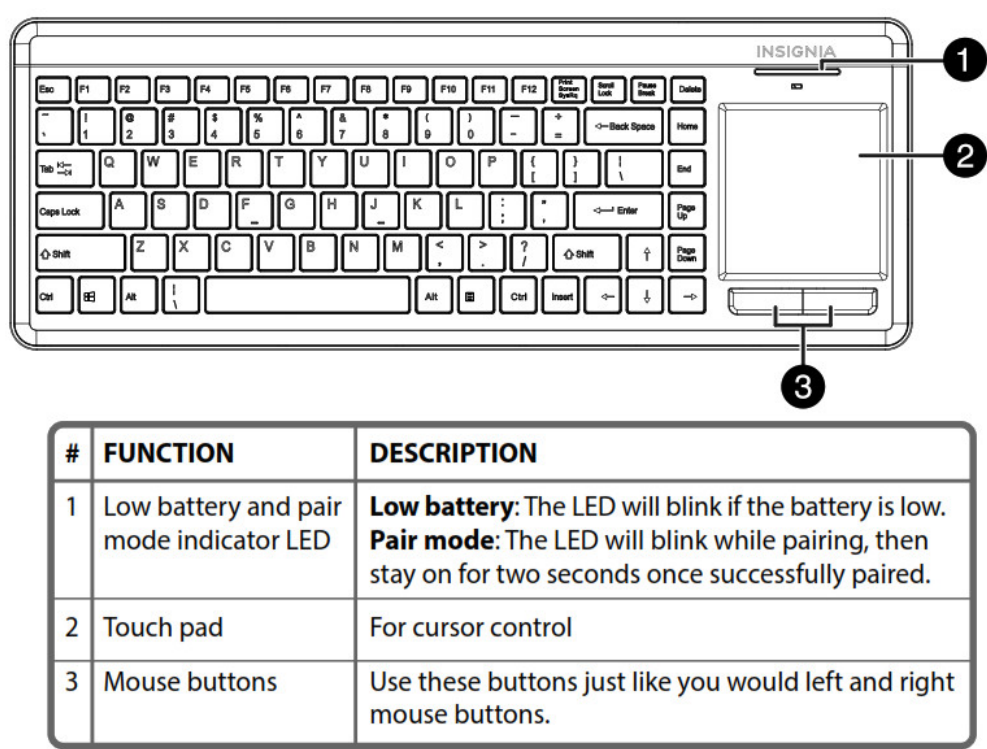
PACKAGE CONTENTS

- Wireless keyboard
- USB nano receiver
- AA batteries (2)
- Quick Setup Guide

SYSTEM REQUIREMENTS

- Windows® 10, Windows® 8.1, Windows® 8, Windows® 7, Windows Vista®, or Mac OS 10.X or higher.
- One available USB port

FEATURES



Before using your new product, please read these instructions to prevent any damage.

INSTALLING THE USB NANO RECEIVER AND BATTERIES

1. Plug the USB nano receiver into an available USB port on your computer. Windows automatically finds and installs the appropriate driver.
2. Turn your keyboard over and open the battery compartment.
3. Insert two AA batteries (included) into the battery compartment. Make sure that you match the + and – symbols on the batteries with the + and – symbols in the battery compartment. The keyboard automatically detects the USB nano receiver.

Notes:

- If the keyboard and USB nano receiver do not automatically pair, you can force them to pair by pressing the Esc, 1, and = keys simultaneously on the keyboard. The low battery/pairing indicator LED on the keyboard

blinks while in pairing mode (10 seconds).

- A low battery LED indicator notifies you when you need to change batteries.

4. Close the battery compartment and turn the keyboard over. You can immediately begin using your keyboard.

USING THE TOUCHPAD

WINDOWS 8 (OR LATER) GESTURES	DESCRIPTION
One finger swipe from left edge towards center	Switch application; N/A for Windows 10"
One finger swipe from right edge towards center	Show charm bar
One finger swipe from top edge towards center	Show application bar
Two finger click	Right button click; N/A for Windows 10"
Two finger slide right or left	Horizontal scrolling
Two finger up or down	Up and down scrolling
Two finger spread/pinch	Zoom in and out
Three finger click	Middle button click
Three finger slide down	Desktop display/minimize all
Three finger slide up	Start button
Three finger slide right or left	Forward/backward button

CLEANING YOUR KEYBOARD

- Wipe the keyboard with a damp, lint-free cloth.

SPECIFICATIONS

Keyboard:

- Dimension (L×W×H): 16 × 5.8 × .8 in. (40.6 × 14.9 × 2.1 cm)

TROUBLESHOOTING

My keyboard is not working.

- Move your keyboard closer to your computer.
- Make sure that your computer meets the system requirements.
- Replace the keyboard batteries.
- Try plugging your USB nano receiver into a different USB port on your computer.
- Re-plug the USB nano receiver into the USB port on your computer, then press the Esc, 1, and = keys simultaneously on the keyboard to pair the keyboard with the USB nano receiver. After pairing successfully, the LED turns off.
- Check the batteries in your keyboard. The low battery/pairing indicator LED blinks for 10 seconds when the batteries are low.

LEGAL NOTICES

FCC Statement

This device complies with Part 15 of the FCC Rules. Operation is subject to the following two conditions: (1) this device may not cause harmful interference, and (2) this device must accept any interference received, including interference that may cause undesired operation.

This equipment has been tested and found to comply with the limits for a Class B digital device, pursuant to Part 15 of the FCC Rules. These limits are designed to provide reasonable protection against harmful interference in a residential installation. This equipment generates, uses and can radiate radio frequency energy and, if not installed and used in accordance with the instructions, may cause harmful interference to radio communications. However, there is no guarantee that interference will not occur in a particular installation. If this equipment does cause harmful interference to radio or television reception, which can be determined by turning the equipment off and on, the user is encouraged to try to correct the interference by one or more of the following measures:

- Reorient or relocate the receiving antenna.
- Increase the separation between the equipment and receiver.
- Connect the equipment into an outlet on a circuit different from that to which the receiver is connected.
- Consult the dealer or an experienced radio/TV technician for help.

Warning: Changes or modifications not expressly approved by the party responsible for compliance could void the user's authority to operate the equipment.

RSS-Gen and RSS-210 statement

This device complies with Industry Canada license-exempt RSS standard(s).

Operation is subject to the following two conditions: (1) this device may not cause interference, and (2) this device must accept any interference, including interference that may cause undesired operation of the device.

RSS-102 statement

This equipment complies with Industry Canada radiation exposure limits set forth for an uncontrolled environment.

ONE-YEAR LIMITED WARRANTY

For complete warranty, visit www.insigniaproducts.com.

CONTACT INSIGNIA

1-877-467-4289 (U.S. and Canada) or 01-800-926-3000 (Mexico)

www.insigniaproducts.com

INSIGNIA is a trademark of Best Buy and its affiliated companies.

Distributed by Best Buy Purchasing, LLC

©2015 Best Buy. All rights reserved.

Made in China

INSIGNIA NS-PNK6811/ NS-PNK6811-C Wireless Keyboard with Touch Pad Quick Setup Guide – [Download](#)