



INSIGNIA NS-PMDM2019 Dual Mode Wireless Mouse 6-Button Quick Setup Guide

[Home](#) » [Insignia](#) » INSIGNIA NS-PMDM2019 Dual Mode Wireless Mouse 6-Button Quick Setup Guide 

Contents

1 Dual Mode Wireless Mouse 6-Button

1.1 PACKAGE CONTENTS

1.2 SYSTEM REQUIREMENTS

1.3 MOUSE FEATURES

1.4 INSTALLING THE MOUSE BATTERY AND REMOVING THE NANO RECEIVER

1.5 CONNECTING YOUR MOUSE TO YOUR COMPUTER

1.5.1 Connecting with the nano receiver

1.5.2 Connecting with Bluetooth

1.6 2.4G AND BLUETOOTH SWITCH LED INDICATORS

1.7 DPI SWITCH KEY AND LED INDICATORS

1.8 CLEANING YOUR MOUSE

1.9 SPECIFICATIONS

1.9.1 Mouse:

1.9.2 Nano receiver:

1.10 TROUBLESHOOTING

1.10.1 My mouse is not working.

1.10.2 My mouse pointer or scroll wheel is too sensitive or not sensitive enough.

1.11 LEGAL NOTICES

1.11.1 FCC Statement

1.11.2 RSS-Gen and RSS-210 statement

1.11.3 RSS-102 statement

1.11.4 RSS-Gen and RSS-247 statement

1.12 ONE-YEAR LIMITED WARRANTY

1.13 CONTACT INSIGNIA

2 Related Posts

QUICK SETUP GUIDE

Dual Mode Wireless Mouse 6-Button

NS-PMDM2019

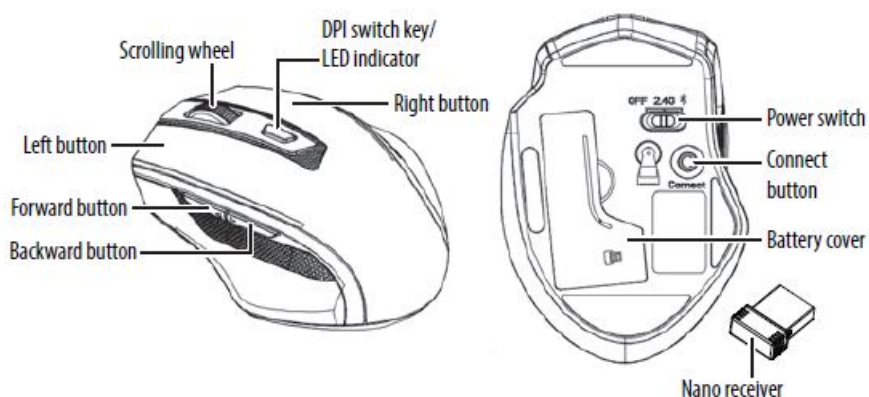
PACKAGE CONTENTS

- Wireless mouse
- Nano receiver
- AA battery (1)
- Quick Setup Guide

SYSTEM REQUIREMENTS

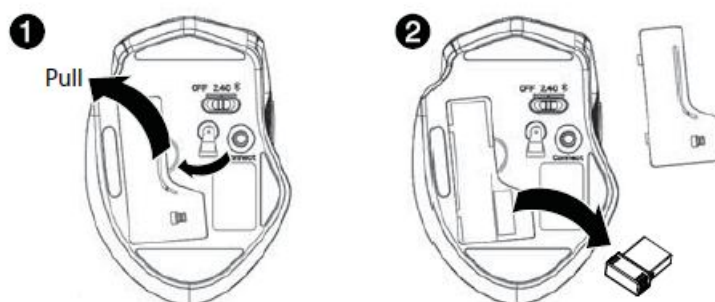
- Windows® 10, Windows® 8.1, Windows® 8, Mac OS 10.X or higher, or Chrome OS
- One available USB port

MOUSE FEATURES

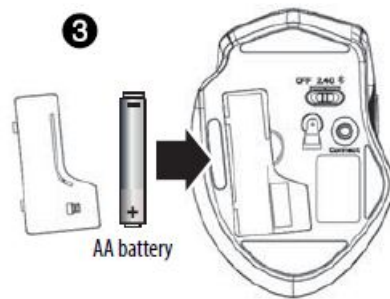


INSTALLING THE MOUSE BATTERY AND REMOVING THE NANO RECEIVER

1. Take the battery cover off.
2. Remove the nano receiver.



3. Insert the included AA battery into the battery compartment. Make sure that the + and – signs match the symbols in the compartment.



4. Replace the battery cover.

Tip: Store the nano receiver in the mouse when it is not in use.

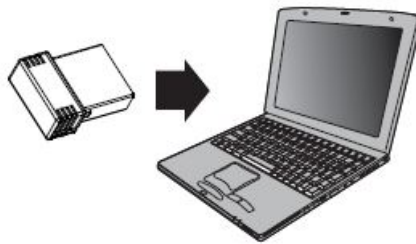
CONNECTING YOUR MOUSE TO YOUR COMPUTER

Connecting with the nano receiver

You can connect your mouse to your computer using either the included nano receiver or by using Bluetooth.

1. Plug the nano receiver into a USB port on your computer.
2. Slide the Power switch on your mouse to 2.4G or (Bluetooth).

The computer automatically detects the mouse, and you can immediately begin using it.



Connecting with Bluetooth

Note: You don't need to connect the nano receiver when connecting with Bluetooth.

1. Turn on Bluetooth on your computer or plug in a Bluetooth dongle. See your computer's documentation for Bluetooth pairing instructions.
2. Slide the power switch on your mouse to (Bluetooth). The LED indicator blinks for 10 minutes then turns off.

Note: If the power switch is already on (Bluetooth), press the Connect button instead.

3. Select BLE 5.0 Mouse from your computer's Bluetooth menu. When paired, the LED indicator turns off.

Note: If pairing fails, repeat these steps.

2.4G AND BLUETOOTH SWITCH LED INDICATORS

FUNCTION	DESCRIPTION
Power on	LED is on for 10 seconds, then turns off.
Low battery warning	LED blinks once per second for 10 seconds, then turns off.
2.4G pairing mode	LED blinks for 10 seconds after pressing the Connect button.
Bluetooth pairing mode	LED blinks for 10 minutes after pressing the Connect button.
2.4G pairing failed	After pressing the Connect button, the LED blinks for 10 seconds, then turns off.
Bluetooth pairing failed	After pressing the Connect button, the LED blinks for 10 minutes, then turns off.
2.4G pairing successful	After pressing the Connect button, the LED blinks once per second (for up to 10 seconds). When pairing is successful, the LED turns off.
Bluetooth pairing successful	After pressing the Connect button, the LED blinks once per second (for up to 10 minutes). When pairing is successful, the LED turns off.

DPI SWITCH KEY AND LED INDICATORS

There are five available DPI settings: The blink on the key indicates the DPI setting in use.

Note: The default setting is 1600 DPI.

DPI:	LED INDICATOR BLINKS:
600 DPI	1
1000 DPI	2
1600 DPI	3
2400 DPI	4
3600 DPI	5

CLEANING YOUR MOUSE

- Wipe your mouse with a damp, lint-free cloth.

SPECIFICATIONS

Mouse:

- Dimensions (H×W×D): 1.49 × 2.94 × 4.11 in. (3.78 × 7.45 × 10.45 cm)
- Weight: 2.33 oz. (66 g)
- Battery: 1 AA alkaline battery
- Battery life: 6 months (based on average usage)
- Radio frequency: 2.4Ghz
- Operating distance: 33 ft. (10 m)
- Rating: 1.5V C.C. – 10mA
- DPI: 600, 1000, 1600, 2400, 3600

- Bluetooth: v5.0

Nano receiver:

- Dimension (H×W×D): .57 × .25 × .74 in. (1.45 × .625 × 1.89 cm)
- Weight: .04 oz. (1.1 g)
- Interface: USB 1.1, 2.0, 3.0

TROUBLESHOOTING

My mouse is not working.

- Make sure that your mouse is turned on.
- Move your mouse closer to your computer.
- Make sure that your computer meets the system requirements.
- Only use your mouse on a clean, flat, non-slippery surface to ensure smooth and accurate cursor action.
- Avoid using your mouse on reflective, transparent, or metallic surfaces.
- Make sure that your mouse and nano receiver are paired by pressing the Connect button on the mouse.
- Replace your mouse battery. The LED indicator blinks for 10 seconds when the battery is low.
- Unplug then reconnect the nano receiver into the USB port on your computer, then press the Connect button on the mouse. The LED indicator on the mouse flashes steadily while in pairing mode (10 seconds). After pairing successfully, the LED turns off.
- Try connecting your nano receiver into a different USB port on your computer.
- Try removing or moving other wireless devices near the computer to prevent interference.
- Make sure that that your computer is Bluetooth-enabled.
- Press the Connect button to reset the Bluetooth connection between your mouse and your computer, then re-pair your devices.

My mouse pointer or scroll wheel is too sensitive or not sensitive enough.

- Adjust the cursor or scroll wheel settings on your computer. Refer to the documentation that came with your computer.
- Remove any metallic objects from the line of sight between your computer and the Bluetooth mouse.
- If you are using a computer with a built-in Bluetooth antenna, try reorienting the computer.
- If you are using a Bluetooth dongle, use a USB extension cable and place the Bluetooth dongle onto your desktop or somewhere in sight of your Bluetooth mouse.
- Move the mouse closer to your computer or Bluetooth dongle.
- Turn off the mouse, then turn it on again.
- Disconnect any Bluetooth audio devices, such as headsets, that may be connected to your computer.
- Switch off any other devices operating in the 2.4 GHz radio spectrum, such as a Wi-Fi network or mobile telephone, or move their antennas further away from your computer.

LEGAL NOTICES

All other devices shall bear the following statement in a conspicuous location on the device:

FCC Statement

This device complies with Part 15 of the FCC Rules. Operation is subject to the following two conditions: (1) this device may not cause harmful interference, and (2) this device must accept any interference received, including interference that may cause undesired operation.

This equipment has been tested and found to comply with the limits for a Class B digital device, pursuant to Part 15 of the FCC Rules. These limits are designed to provide reasonable protection against harmful interference in a residential installation. This equipment generates, uses, and can radiate radio frequency energy and, if not installed and used in accordance with the instructions, may cause harmful interference to radio communications.

However, there is no guarantee that interference will not occur in a particular installation. If this equipment does cause harmful interference to radio or television reception, which can be determined by turning the equipment off and on, the user is encouraged to try to correct the interference by one or more of the following measures:

- Reorient or relocate the receiving antenna.
- Increase the separation between the equipment and receiver.
- Connect the equipment into an outlet on a circuit different from that to which the receiver is connected.
- Consult the dealer or an experienced radio/TV technician for help.

Warning: Changes or modifications not expressly approved by the party responsible for compliance could void the user's authority to operate the equipment.

RSS-Gen and RSS-210 statement

This device complies with Industry Canada license-exempt RSS standard(s). Operation is subject to the following two conditions: (1) this device may not cause interference, and (2) this device must accept any interference, including interference that may cause undesired operation of the device.

Le présent appareil est conforme aux CNR d'Industrie Canada applicables aux appareils radio exempts de licence. L'exploitation est autorisée aux deux conditions suivantes : (1) l'appareil ne doit pas produire de brouillage, et (2) l'utilisateur de l'appareil doit accepter tout brouillage radioélectrique subi, même si le brouillage est susceptible d'en compromettre le fonctionnement.

RSS-102 statement

This equipment complies with Industry Canada radiation exposure limits set forth for an uncontrolled environment.

Cet équipement est conforme à l'exposition aux rayonnements Industry Canada limites établies pour un environnement non contrôlé.

RSS-Gen and RSS-247 statement

This device complies with Industry Canada licence-exempt RSS standard(s). Operation is subject to the following two conditions: (1) this device may not cause interference, and (2) this device must accept any interference, including interference that may cause undesired operation of the device.

Le présent appareil est conforme aux CNR d'Industrie Canada applicables aux appareils radio exempts de licence. L'exploitation est autorisée aux deux conditions suivantes : (1) l'appareil ne doit pas produire de brouillage, et (2) l'utilisateur de l'appareil doit accepter tout brouillage radio électrique subi, même si le brouillage est susceptible d'en compromettre le fonctionnement.

All other devices shall bear the following statement in a conspicuous location on the device:

ONE-YEAR LIMITED WARRANTY

For complete warranty, visit www.insigniaproducts.com.

CONTACT INSIGNIA

1-877-467-4289 (U.S. and Canada) or 01-800-926-3000 (Mexico)

www.insigniaproducts.com

INSIGNIA is a trademark of Best Buy and its affiliated companies

Distributed by Best Buy Purchasing, LLC

7601 Penn Ave South, Richfield, MN 55423 U.S.A.

©2019 Best Buy. All rights reserved.

Made in China

INSIGNIA NS-PMDM2019 Dual Mode Wireless Mouse 6-Button Quick Setup Guide – [Download](#)

[Manuals+](#).