



IACarPlay Module for Use with Insane Audio Receivers User Guide

[Home](#) » [iNSANe AUDIO](#) » IACarPlay Module for Use with Insane Audio Receivers User Guide 



LACARPLAY QUICKSTART GUIDE

Contents

- 1 **WELLCOM!**
- 2 **SAFETY PRECAUTIONS**
- 3 **4 STEPS TO SUCCESS**
- 4 **CAN I USE AIRPLAY?**
- 5 **DO I HAVE V1 OR V2**
- 6 **DOWNLOAD AND INSTALL APK**
- 7 **V1 IACARPLAY SETUP**
- 8 **V2 IACARPLAY SETUP**
- 9 **INSANE AUDIO IS HERE TO HELP**
- 10 **Documents / Resources**
 - 10.1 **References**
- 11 **Related Posts**

WELLCOM!

Congratulations on your decision to ADD APPLE CAR PLAY VIA AIRPLAY

By adding IACarPlay to your 2000 or 3000 series head unit, you've enabled seamless access to Apple Wired Car Play.

This guide is for 2000 and 3000 series head units (excluding the JL3001) and will walk you through getting your unit set up with Apple Wired Car Play by using the Insane Audio IACarPlay module.

All Insane Audio head units are simple to operate, but if you are new to the Android operating system or need some general assistance, don't worry! Insane Audio

Customer Support is here 7 days a week at www.insaneaudio.com/support

SAFETY PRECAUTIONS



IMPORTANT: Safety first! Please use common sense when operating your Insane Audio head unit. NEVER operate the unit or watch videos or television while driving. Keep your hands on the wheel and your eyes on the road!

WARNING! Never attempt to open your Insane Audio head unit or repair it yourself. Doing so could result in electric shock. Even worse – it's guaranteed to void your warranty.

This product uses a 12V power supply system and should always be properly grounded. Please consult a professional installation specialist if you are unsure whether your system has been properly installed.

4 STEPS TO SUCCESS

There are 4 general steps to getting an IACarPlay setup

1. Make sure you've got a 2000 or 3000 series Insane Audio head unit.
2. Identify if you have v1 or v2 of the IACarPlay module
 - There is no difference between v1 and v2 except for the application that you need to install. They are otherwise identical in functionality.
3. Download and install the appropriate APK for your version of the IACarPlay module (detailed instructions ahead).
4. Connect the module to the head unit and the phone to the module via USB
 - IACarPlay to the head unit → iPhone to IACarPlay
 - This can be done by attaching the module directly to the back of the head unit or to one of the provided USB cables coming from the unit.

That's it, and you'll be ready to rock your Wired Apple Car Play.

Let's get started.

CAN I USE AIRPLAY?

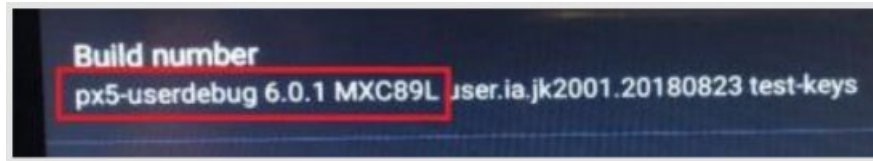
IACarPlay is a module for seamless integration of Wired Apple CarPlay with Insane Audio 2000 and 3000 series head units.

To verify you've got a 2000 or 3000 series Insane Audio Head Unit read on!

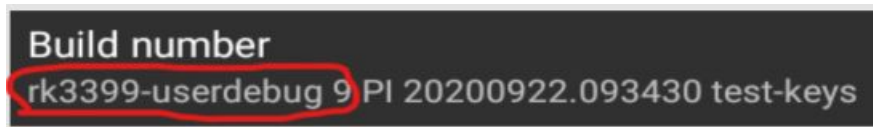
How to Identify the Series of Your Insane Audio Head Unit

Go to Settings → System → About Machine and scroll down to 'Build Number'

- All 2000 series products 'Build Number' will start with this string (also circled in the image below):
px5userdebug 6.0.1 MXC89L.



- All 3000 series products 'Build Number' will start with this string (also circled in the image below): rk3399-userdebug 9.



- If your build number matches either of the strings identified above, good news.
Insane Audio's IACarPlay is for you!

DO I HAVE V1 OR V2

There are two versions of the same model of IACarPlay module. We call them v1 and v2, but in reality, they function exactly the same. The only difference is in which application you have to install to make it work.

Identify which version of the module you have.

- You have a v1 module if your label looks like this
 - It will say "Model: CPC200-CMAP"



- You have a v2 module if your label looks like this.
 - It will say "IACarPlay" on the label



DOWNLOAD AND INSTALL APK

1. Goto: www.insanejeepaudio.com/APK/
 - v1 IACarplay Module Download: IACarPlay.apk
 - v2 IACarPlay Module Download: IACarPlay_v2.0.apk

Note: Advanced users, you can download it directly on your Insane Audio head unit. Open Chrome and visit the website listed above. Download, install, and rock on!

insanejeepaudio.com/APK/

Index of /APK

Name	Last modified	Size	Description
Parent Directory		-	
AutoPlayBox.apk	2019-05-24 17:10	6.9M	
AutoPlayBox_old.apk	2018-10-02 20:00	5.8M	
BlackHole.apk	2016-04-02 12:46	413K	
IACarPlay.apk	2019-05-10 15:00	6.9M	
IACarPlay_v2.0.apk	2020-01-06 20:30	6.8M	
InsaneTV_2000_series_>	2019-10-30 18:11	182K	
com.insaneaudio.dial_>	2020-11-11 13:32	1.8M	
com.insaneaudio.util_>	2020-11-11 15:49	11M	
netflix-3.16.apk	2017-06-14 15:43	15M	
netflix-4.16.apk	2017-06-14 15:43	25M	

Download for v1 (points to IACarPlay.apk)

Download for v2 (points to IACarPlay_v2.0.apk)



There is no functional difference between hardware versions v1 and v2. Only the application you have to install differs.

2. Copy APK to USB Drive/MicroSD card using a computer

- Note: You can copy it to your Insane Audio GPS card if needed

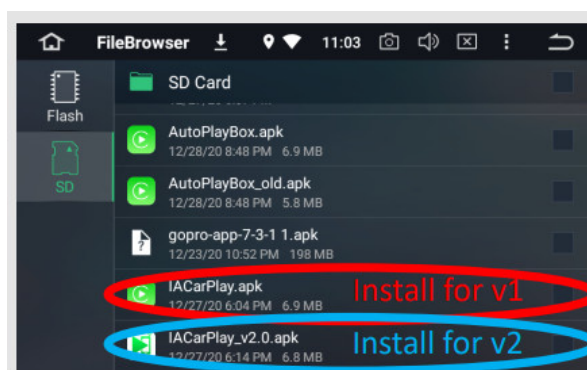
3. Connect USB Drive/MicroSD card into Insane Audio head unit

- Same procedure as playing music from a USB Drive/

MicroSD card. Please see the appropriate section of your head unit's Quick Start Guide for more details

4. Open the FileBrowser App

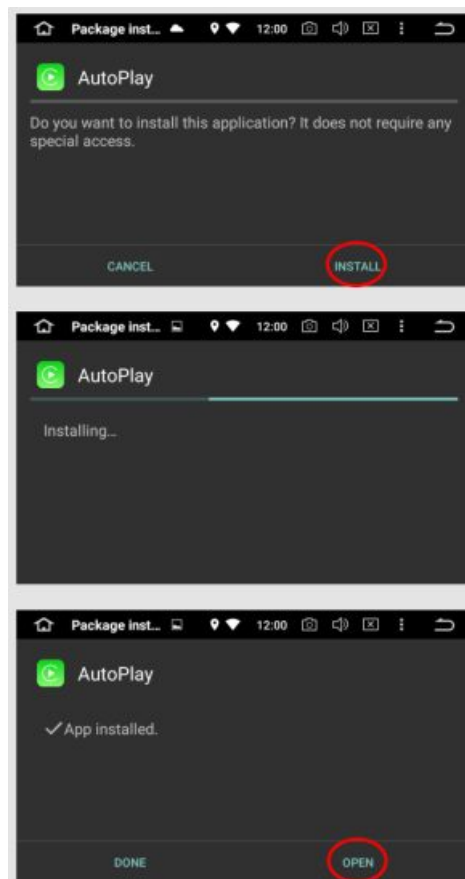
- Navigate to where you saved the APK
- Click on the APK to install.



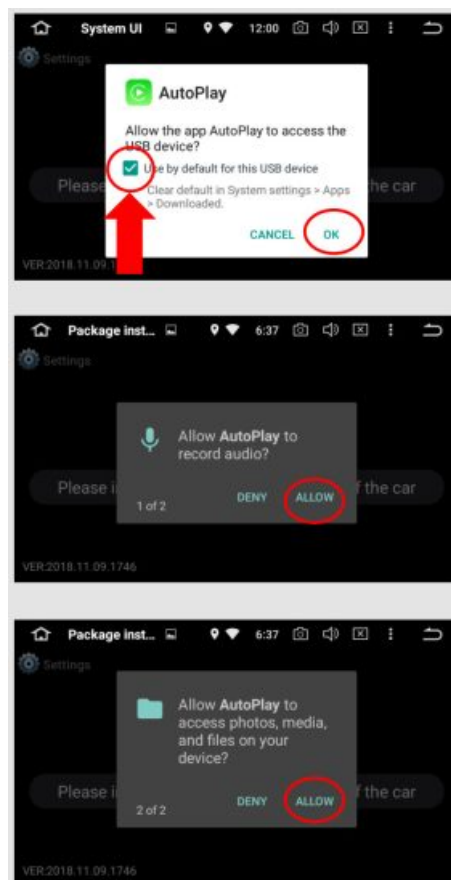
- If you have v1, go to page 10
- If you have v2, go to page 13

V1 IACARPLAY SETUP

- v1 IACarPlay module uses the IACarPlay.apk (aka AutoPlay)
- Click on the APK to begin the installation and follow the on-screen instructions

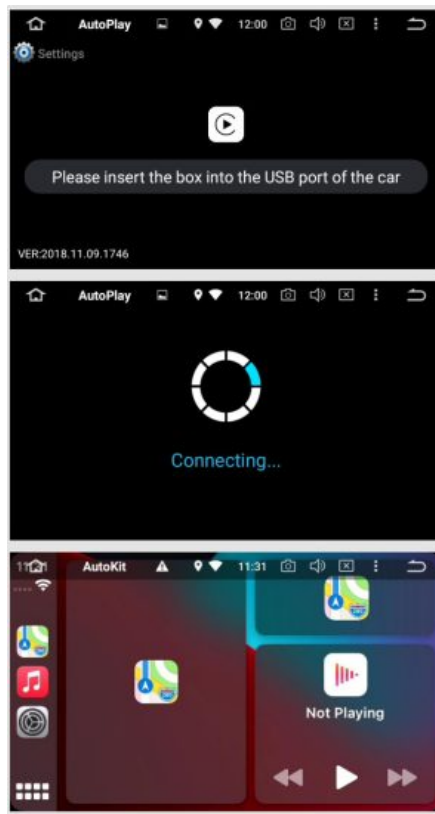


Note: Check this box to auto-launch CarPlay each time you connect your iPhone via the Apple USB cable

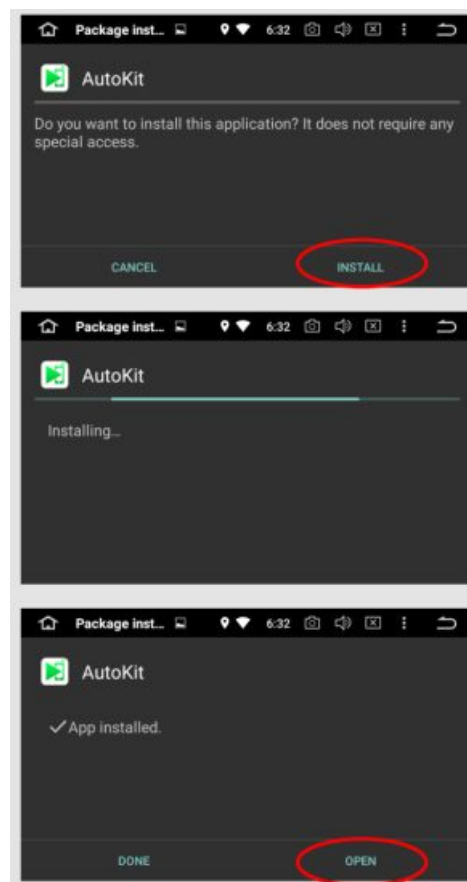


V2 IACARPLAY SETUP

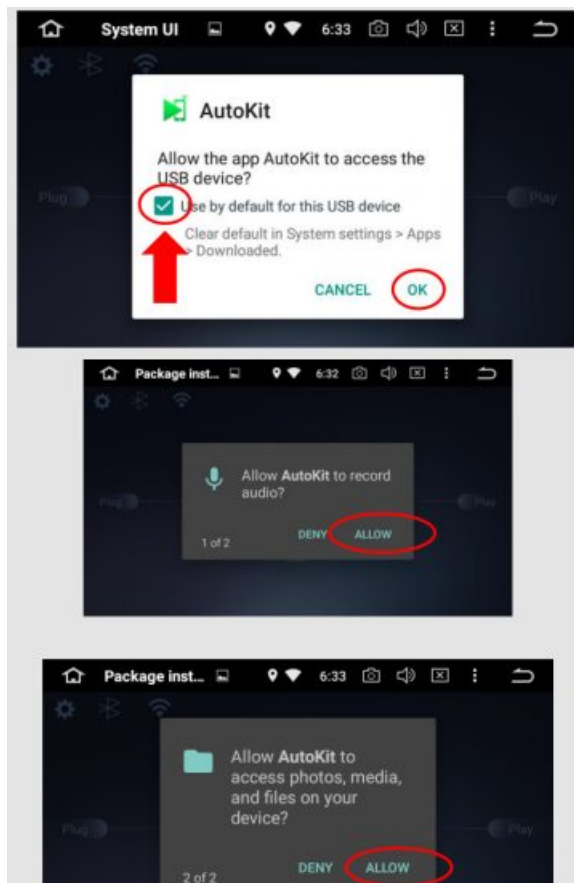
- AutoPlay is now ready and waiting.
- To launch CarPlay, connect your iPhone via the Apple USB cable



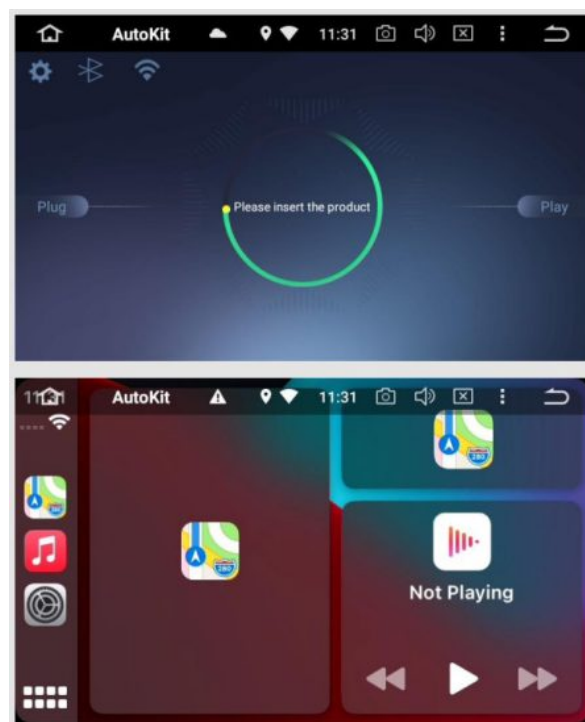
- v2 IACarPlay module uses the IACarPlay_V2.0.apk (aka AutoKit)
- Click on the APK to begin the installation and follow the on-screen instructions.



- **Note:** Check this box to auto-launch CarPlay each time you connect your iPhone via the Apple USB cable



- AutoKit is now ready and waiting.
- To launch CarPlay, connect your iPhone via the Apple USB cable.



INSANE AUDIO IS HERE TO HELP

Congratulations on setting up IACarPlay!

Insane Audio is committed to ensuring the best possible customer experience across all our products. If you have any issues, questions or comments do not hesitate to reach out to our support team at

www.insaneaudio.com/support

We're here 7 days a week to make sure you experience the full awesomeness of Insane Audio's products. Party on and be excellent to each other.



Documents / Resources



[iNSANE AUDIO IACarPlay Module for Use with Insane Audio Receivers](#) [pdf] User Guide
IACarPlay, Module for Use with Insane Audio Receivers

References

- [iNSANE Audio | Are You Ready to Rock Your Rig?](#)
- [iNSANE Technical Support, Installation Guides + Checklists | Insane Audio Support](#)
- [Index of /APK](#)

Manuals+