

[Skip to content](#)

Manuals+

User Manuals Simplified.



Inphic PM6 Pro Wireless Mouse User Manual: Connect, Adjust DPI, and Switch Modes

[Home](#) » [inphic](#) » Inphic PM6 Pro Wireless Mouse User Manual: Connect, Adjust DPI, and Switch Modes

The Inphic PM6 Pro Wireless Three Mode Power Display Mouse is a versatile and user-friendly device that offers wireless and Bluetooth connectivity options. This user manual provides step-by-step instructions on how to connect the mouse to your device, adjust DPI, and switch between

modes. The manual also includes technical parameters and operating systems that are compatible with the mouse. Additionally, the manual offers tips on how to care for the device and how to submit a review to help improve the product. The Inphic Customer Support Team welcomes feedback and is committed to providing excellent service. The manual also includes information on the care-free warranty and FCC compliance. Whether you are a student, professional, or gamer, the Inphic PM6 Pro Wireless Three Mode Power Display Mouse is a reliable and efficient tool that can enhance your productivity and performance.

Contents [hide](#)

[1 inphic PM6 Pro Wireless Three Mode Power Display Mouse](#)

[2 KEY DESCRIPTION](#)

[2.1 Connection](#)

[2.2 Wireless connections](#)

[2.3 BT Connection](#)

[3 Package Contents](#)

[4 HOW TO USE](#)

[4.1 Wireless connections](#)

[5 BT connection](#)

[6 TECHNICAL PARAMETERS](#)

[7 OPERATING SYSTEM](#)

[8 We'd Love to Hear From You!](#)

[9 CARE-FREE WARRANTY](#)

[10 FCC](#)

[11 Specifications](#)

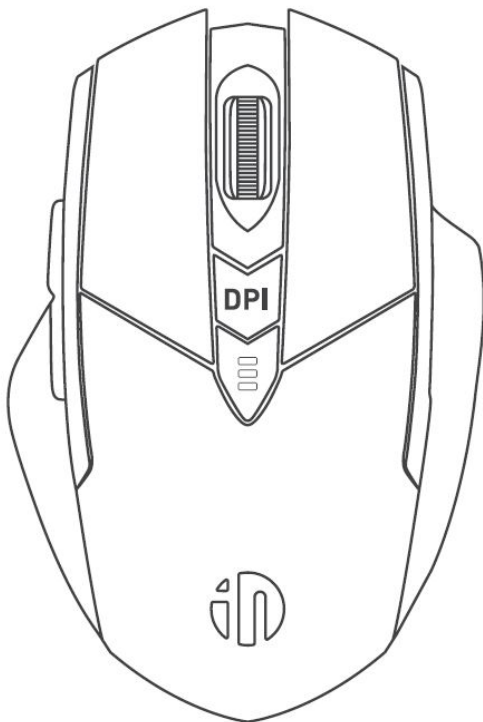
[12 FAQ's](#)

[13 Documents / Resources](#)

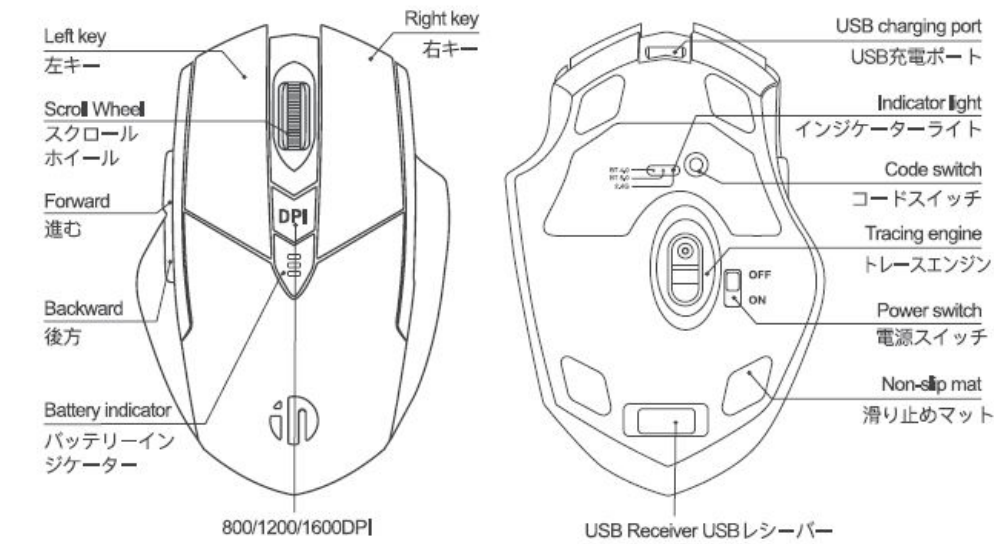
[14 Related Posts](#)

inphic

inphic PM6 Pro Wireless Three Mode Power Display Mouse



KEY DESCRIPTION



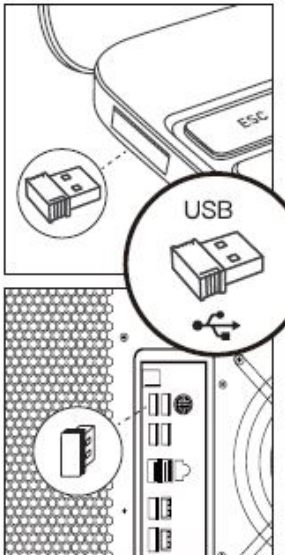
Tip: Long press the middle and right mouse buttons to adjust DPI, support800/1200/1600DPI

Connection

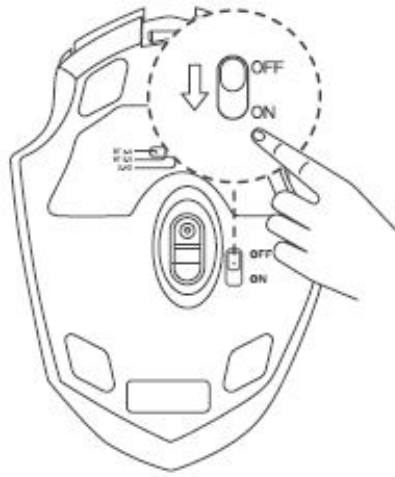
Wireless connections



1. Take out the receiver

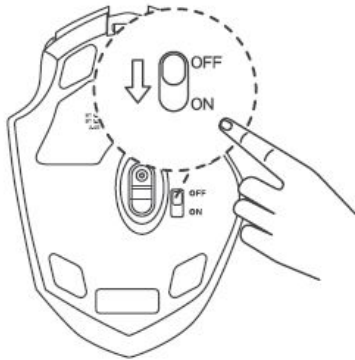


2. Plug the USB receiver into the interface



3. Power on the mouse to use

BT Connection

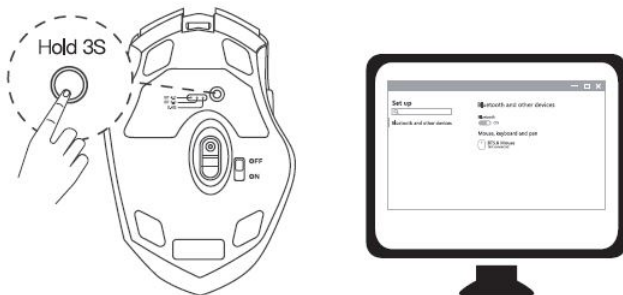


1. Turn on the mouse
2. Click the button to switch to the desired BT mode



(BT 5.0, the green light flashes slowly; BT 4.0, the blue light flashes slowly)

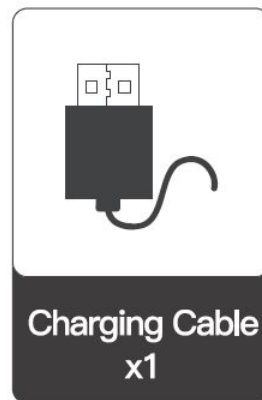
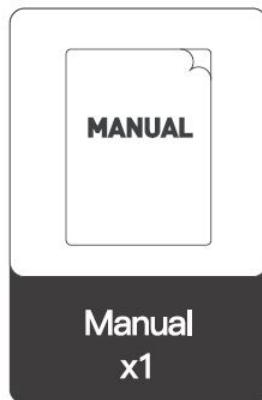
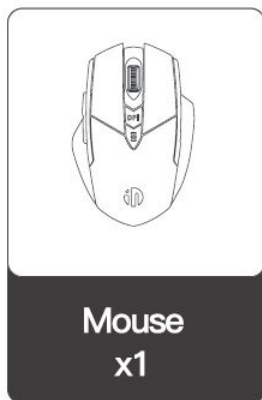
3. Long press for 3 seconds, the indicator light flashes quickly and enters the pairing mode



4. Turn on the device's BT search and Select the BT named BT5.0 Mouse or BT4.0 Mouse to connect

Tip: BT 4.0/5.0 support: Windows 8, Windows 10, Android 5.0 and above, iOS13 and above, macOS x 10.10 and above (configuration requirements: BT 4.0 and above BT adapter)

Package Contents



HOW TO USE

Wireless connections

1. Take out the receiver from the bottom of the mouse and plug the receiver into the USB port of your device.
2. Turn on the switch on the bottom of the mouse to get started. (*Please noted that one mouse is equipped with one specific USB receiver. Please keep the receiver well.)

BT connection

1. Turn on the BT mouse, and then press the switch mode button on the bottom of the device.
5.0 BT mode: Press and Switch the mode to BT 5.0 (Green light will blink slowly), Press the button again and hold around three seconds. The green light will flashing fast.
4.0 BT mode: Press and Switch the mode to BT 4.0 (Blue light will blink slowly), Press the button again and hold around three seconds. The Blue light will flashing fast.
2. In a few moments, the BT device Named BT 5.0 Mouse / BT 4.0 Mouse should appear in the list of discovered BT devices. Select the device, and then click Continue to begin the pairing process.
3. After completed Pairing, the corresponding indicator light will be on around 2 seconds and then turn off, that's means the mouse can be used normally. (*please Note that BT 5.0 mode do not support WIN7 systems)

TECHNICAL PARAMETERS

- Product Number: PM6 PRO
- Max acceleration: 14 inches/second
- Scroll Wheel (Y/N): Yes
- Wireless operating distance: 10 meters in open area and 5 meters in office
- BT technology: BT 5.0/BT 4.0
- Wireless technology: Advanced 2.4 GHz wireless connectivity
- Battery type: 802535 Li-On rechargeable
- Battery capacity: 700mAh
- Built-in battery voltage: 3.7V
- Rated operating current: ::;1 0mA
- Tracking System: Optical tracking

OPERATING SYSTEM

Windows 8, Windows 10, Android 5.0 and above
IOS13 and above, Mac OS X 10.10 and above
Chrome OS
Linux kernel 2.6+2

We'd Love to Hear From You!

Thank you for your recent purchase of our Inphic product. We hope you will be satisfied with both the product and service you received. If not, please give our helpful customer services team an opportunity to improve your experience right away. We are more than happy to help. Meanwhile, we also welcome you to post a Product Review so that others can benefit from your experience. We sincerely appreciate your time and input. To submit your review, please follow the steps below:

1. Log into your account on Amazon.com, click "Your Account" and then click "Your Orders".
 2. Click on the specific Inphic product you purchased, and select the "Create your own review" button in the middle of the page
 3. Now post an informative review or even shoot a video to help it more visible
- We're always looking for ways to improve, so thanks again for your business, support and feedback.
Warmest regards, Inphic Customer Support Team

CARE-FREE WARRANTY

If there is any defect or fault caused by defective material or workmanship of our product within 12 months from the date of purchase, and such defect or fault is notified by the Customer to the Company as soon as practicable, and upon the Company's technician determining that such defect or fault is due to defective material or workmanship, then the Company agrees to replace such defective or faulty part(s) free of charge. No need to return the initial one, please email us for the guarantee service.

FCC

This device complies with part 15 of the FCC Rules. Operation is subject to the following two conditions:

1. this device may not cause harmful interference, this device must accept any interference received, including interference that may cause undesired operation.

Any changes or modifications not expressly approved by the party responsible for compliance could void the user's authority to operate the equipment.

NOTE: This equipment has been tested and found to comply with the limits for a Class B digital device, pursuant to Part 15 of the FCC Rules. These limits are designed to provide reasonable protection against harmful interference in a residential installation. This equipment generates, uses and can radiate radio frequency energy and, if not installed and used in accordance with the instructions, may cause harmful interference to radio communications. However, there is no guarantee that interference will not occur in a particular installation.

If this equipment does cause harmful interference to radio or television reception,

which can be determined by turning the equipment off and on, the user is encouraged to try to correct the interference by one or more of the following measures:

- Reorient or relocate the receiving antenna.
- Increase the separation between the equipment and receiver.
- Connect the equipment into an outlet on a circuit different from that to which the receiver is connected.
- Consult the dealer or an experienced radio/TV technician for help.

The device has been evaluated to meet general RF exposure requirement. The device can be used in portable exposure condition without restriction

Specifications

Product Name	Inphic PM6 Pro Wireless Three Mode Power Display Mouse
Key Description	Long press the middle and right mouse buttons to adjust DPI, support 800/1200/1600DPI
Connection	<ul style="list-style-type: none"> • Wireless connections <ul style="list-style-type: none"> ◦ Take out the receiver ◦ Plug the USB receiver into the interface ◦ Power on the mouse to use • BT Connection <ul style="list-style-type: none"> ◦ Turn on the mouse ◦ Click the button to switch to the desired BT mode (BT 5.0, the green light flashes slowly; BT 4.0, the blue light flashes slowly) ◦ Long press for 3 seconds, the indicator light flashes quickly and enters the pairing mode ◦ Turn on the device's BT search and Select the BT named BT5.0 Mouse or BT4.0 Mouse to connect <p>Tip: BT 4.0/5.0 support: Windows 8, Windows 10, Android 5.0 and above, iOS13 and above, macOS x 10.10 and above (configuration requirements: BT 4.0 and above BT adapter)</p>
Package Contents	Not specified
Technical Parameters	<ul style="list-style-type: none"> • Product Number: PM6 PRO • Max acceleration: 14 inches/second • Scroll Wheel (Y/N): Yes • Wireless operating distance: 10 meters in open area and 5 meters in office • BT technology: BT 5.0/BT 4.0 • Wireless technology: Advanced 2.4 GHz wireless connectivity • Battery type: 802535 Li-On rechargeable • Battery capacity: 700mAh • Built-in battery voltage: 3.7V • Rated operating current: <10mA • Tracking System: Optical tracking
Operating System	<ul style="list-style-type: none"> • Windows 8, Windows 10, Android 5.0 and above • IOS13 and above, Mac OS X 10.10 and above • Chrome OS • Linux kernel 2.6+2
Care-Free Warranty	<p>If there is any defect or fault caused by defective material or workmanship of our product within 12 months from the date of purchase, and such defect or fault is notified by the Customer to the Company as soon as practicable, and upon the Company's technician determining that such defect or fault is due to defective material or workmanship, then the Company agrees to replace such defective or faulty part(s) free of charge. No need to return the initial one, please email us for the guarantee service.</p> <p>This device complies with part 15 of the FCC Rules. Operation is subject to the following two conditions:</p> <ul style="list-style-type: none"> • This device may not cause harmful interference • This device must accept any interference received, including interference that may cause undesired operation. <p>Any changes or modifications not expressly approved by the party responsible for compliance could void the user's authority to operate the equipment.</p> <p>NOTE: This equipment has been tested and found to comply with the limits for a Class B digital device, pursuant to Part 15 of the FCC Rules. These limits are designed to provide reasonable protection against harmful interference in a residential installation. This equipment generates, uses and can radiate radio frequency energy and, if not installed and used in accordance with the instructions, may cause harmful interference to radio communications. However, there is no guarantee that interference will not occur in a particular installation.</p> <p>If this equipment does cause harmful interference to radio or television reception, which can be determined by turning the equipment off and on, the user is encouraged to try to correct the interference by one or more of the following measures:</p> <ul style="list-style-type: none"> • Reorient or relocate the receiving antenna. • Increase the separation between the equipment and receiver. • Connect the equipment into an outlet on a circuit different from that to which the receiver is connected. • Consult the dealer or an experienced radio/TV technician for help. <p>The device has been evaluated to meet general RF exposure requirement. The device can be used in portable exposure condition without restriction.</p>
FCC	

FAQ's

How do I adjust the DPI on the Inphic PM6 Pro Wireless Mouse?

Long press the middle and right mouse buttons to adjust DPI, supporting 800/1200/1600DPI.

How do I connect the Inphic PM6 Pro Wireless Mouse wirelessly?

Take out the receiver from the bottom of the mouse and plug the receiver into the USB port of your device. Turn on the switch on the bottom of the mouse to get started.

How do I connect the Inphic PM6 Pro Wireless Mouse via Bluetooth?

Turn on the BT mouse, and then press the switch mode button on the bottom of the device. Press and switch the mode to BT 5.0 (green light will blink slowly) or BT 4.0 (blue light will blink slowly). In a few moments, the BT device named BT 5.0 Mouse / BT 4.0 Mouse should appear in the list of discovered BT devices. Select the device, and then click continue to begin the pairing process.

What are the technical parameters of the Inphic PM6 Pro Wireless Mouse?

The technical parameters of the Inphic PM6 Pro Wireless Mouse include a max acceleration of 14 inches/second, wireless operating distance of 10 meters in open area and 5 meters in office, BT technology of BT 5.0/BT 4.0, wireless technology of advanced 2.4 GHz wireless connectivity, battery type of 802535 Li-On rechargeable, battery capacity of 700mAh, built-in battery voltage of 3.7V, rated operating current of ≤10mA, and tracking system of optical tracking.

What operating systems are compatible with the Inphic PM6 Pro Wireless Mouse?

The Inphic PM6 Pro Wireless Mouse is compatible with Windows 8, Windows 10, Android 5.0 and above, iOS13 and above, Mac OS X 10.10 and above, Chrome OS, and Linux kernel 2.6+2.

How do I submit a review for the Inphic PM6 Pro Wireless Mouse?

To submit a review for the Inphic PM6 Pro Wireless Mouse, log into your account on Amazon.com, click "Your Account" and then click "Your Orders". Click on the specific Inphic product you purchased, and select the "Create your own review" button in the middle of the page. Post an informative review or even shoot a video to help it more visible.

What is the care-free warranty for the Inphic PM6 Pro Wireless Mouse?

If there is any defect or fault caused by defective material or workmanship of our product within 12 months from the date of purchase, and such defect or fault is notified by the Customer to the Company as soon as practicable, and upon the Company's technician determining that such defect or fault is due to defective material or workmanship, then the Company agrees to replace such defective or faulty part(s) free of charge. No need to return the initial one, please email us for the guarantee service.

Is the Inphic PM6 Pro Wireless Mouse FCC compliant?

Yes, the Inphic PM6 Pro Wireless Mouse complies with part 15 of the FCC Rules.

Documents / Resources



[inphic PM6 Pro Wireless Three Mode Power Display Mouse](#) [pdf] User Manual

004, 2ANT9004, PM6 Pro Wireless Three Mode Power Display Mouse, PM6 Pro, Wireless Three Mode Power Display Mouse

[Manuals+](#)

- [home](#)
- [privacy](#)