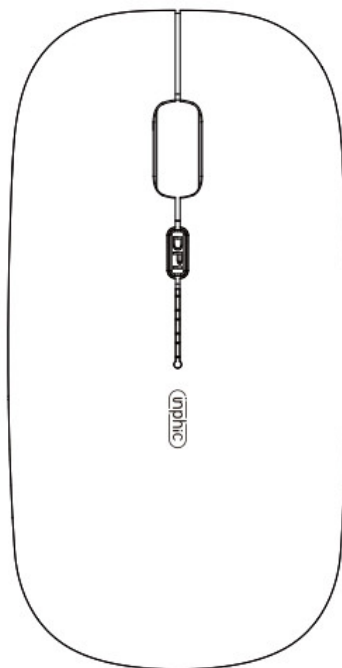







inphic M1 PRO Dual Mode Mouse User Guide

[Home](#) » [inphic](#) » inphic M1 PRO Dual Mode Mouse User Guide 

inphic



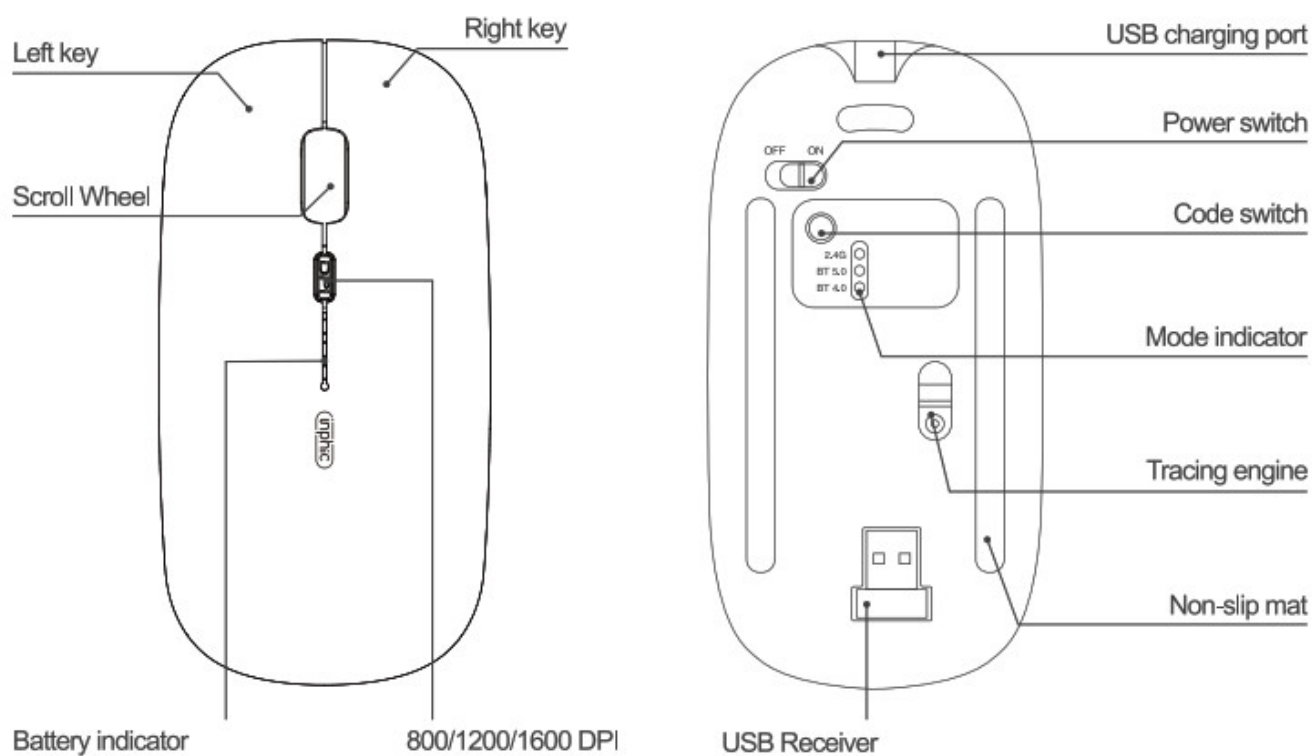
M1 PRO
Dual Mode Mouse

<p>Equipment A</p>  <p>BT 5.0 Greenlight Indicator</p>	<p>Equipment B</p>  <p>BT 4.0 Blue light Indicator</p>	<p>2.4G Equipment</p>  <p>2.4G Wireless Red light Indicator</p>
--	--	---

Contents

- [1 KEY DESCRIPTION](#)
- [2 Package Contents:](#)
- [3 HOW TO USE](#)
- [4 OPERATING SYSTEM](#)
- [5 WARRANTY POLICY](#)
- [6 Documents / Resources](#)
- [7 Related Posts](#)

KEY DESCRIPTION



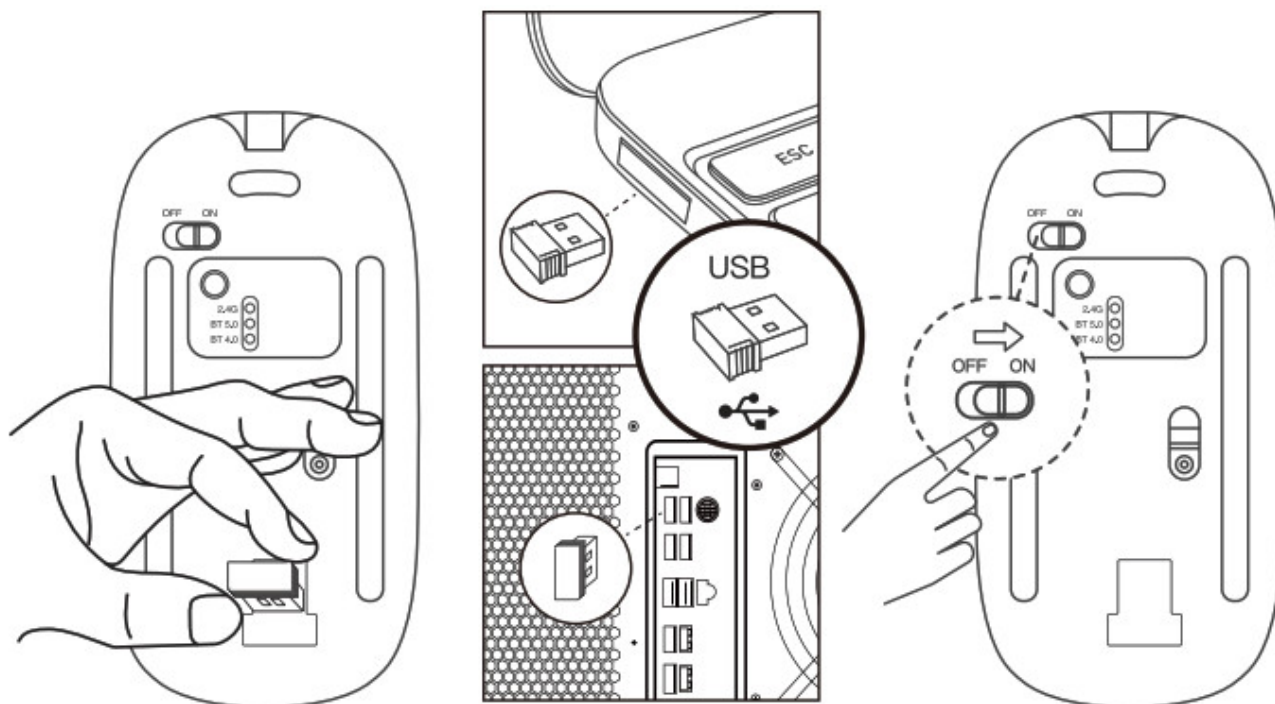
Tip: Long press the middle and right mouse buttons to adjust DPI, support 800/1200/1600 DPI

Wireless connections:

① Plug the USB receiver into the interface

② Take out the receiver

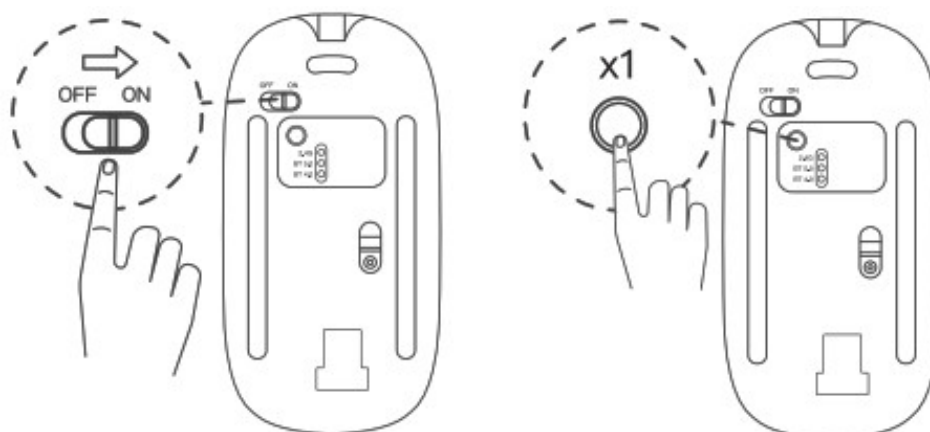
③ Power on the mouse to use



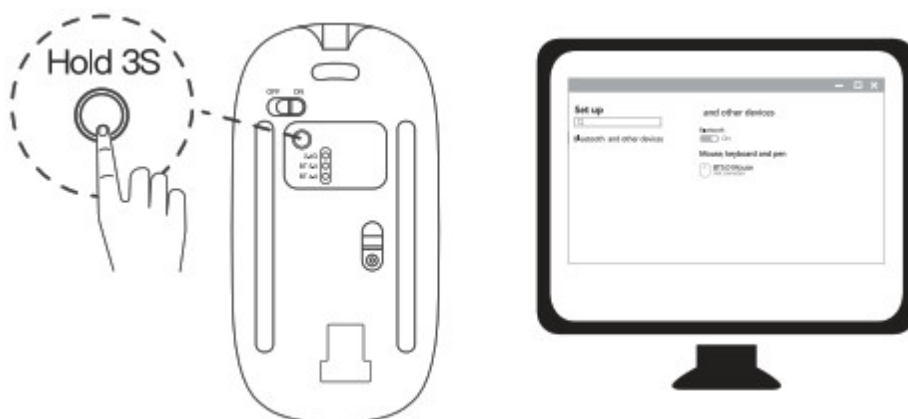
BT connection:

① Turn on the mouse

② Click the button to switch to the desired BT mode (**BT 5.0, the green light flashes slowly; BT 4.0, the blue light flashes slowly**)

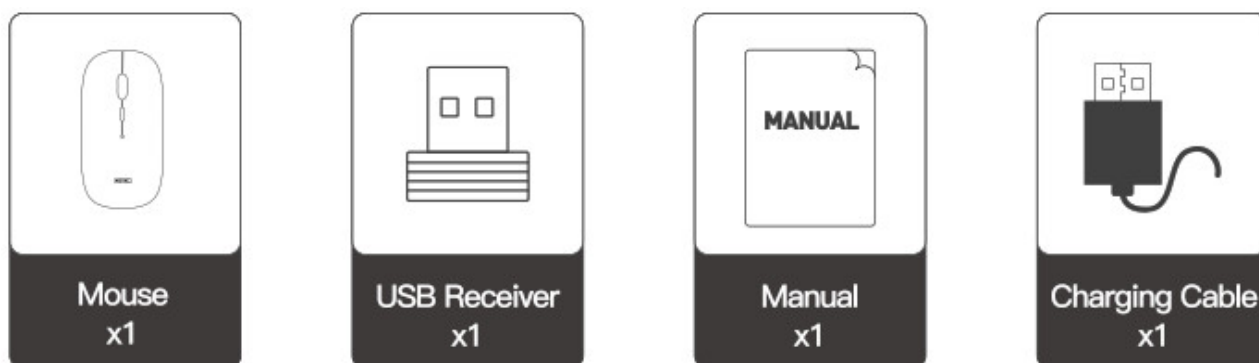


- ③ Long press for 3 seconds, the indicator light flashes quickly and enters the pairing mode
- ④ Turn on the device's BT, search and Select the BT named BT 5.0 Mouse or BT 4.0 Mouse to connect



Tip: BT 4.0/5.0 support: Windows 8, Windows 10, Android 5.0 and above, iOS 10.13 and above, macOS X 10.10 and above (configuration requirements: BT 4.0 and above BT adapter)

Package Contents:



HOW TO USE

Wireless connections:

1. Take out the receiver from the bottom of the mouse and plug the receiver into the USB port of your device.
2. Turn on the switch on the bottom of the mouse to get started. **(*Please noted that one mouse is equipped with one specific USB receiver. Please keep the receiver well.)**

BT connection:

- ① Turn on the BT mouse and then press the switch mode button on the bottom of the device.
BT 5.0 mode: Press and Switch the mode to BT 5.0 (green light will blink slowly), Press the button again and hold for around three seconds. The green light will flash fast.
BT 4.0 mode: Press and Switch the mode to BT 4.0 (The blue light will blink slowly), Press the button again and hold for around three seconds. The Blue light will flash fast.
- ② In a few moments, the BT device Named BT 5.0 Mouse/BT 4.0 Mouse should appear in the list of discovered BT devices. Select the device, and then click Continue to begin the pairing process.
- ③ After completing the Pairing, the corresponding indicator light will be on for around 2 seconds and then turn off, that means the mouse can be used normally. (*please Note that BT 5.0 mode does not support WIN? systems)

TECHNICAL PARAMETERS

- Product Number: M1 PRO
- Max acceleration: 14 inches / second
- Scroll Wheel (Y/N): Yes
- Wireless operating distance: 10 meters in an open area and 5 meters in office
- BT technology: BT 5.0 / BT 4.0
- Wireless technology: Advanced 2.4 GHz wireless connectivity
- Battery type: Li-polymer rechargeable battery
- Battery capacity: 700mAh
- Built-in battery voltage: 3.7V
- Rated operating current: 5_10mA
- Tracking System: Optical tracking

OPERATING SYSTEM

Windows 8, Windows 10, Android 5.0 and above 10S13 and above, Mac OS X 10.10 and above
 Chrome OS
 Linux kernel 2.6+2

WARRANTY POLICY

CARE-FREE WARRANTY

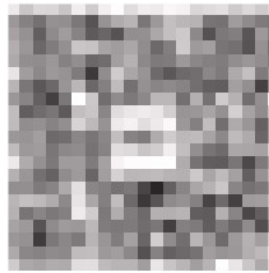
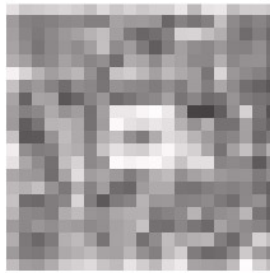
If there is any defect or fault caused by defective material or workmanship of our product within 12 months from the date of purchase. and such defect or fault is notified by the Customer to the Company as soon as practicable, and upon the Company's technician determining that such defect or fault is due to defective material or workmanship, then the Company agrees to replace such defective or faulty part(s) free of charge. no need to return the initial one, please email us for the guarantee service.

We'd Love to Hear From You! Thank you for your recent purchase of our Inphic product. We hope you will be satisfied with both the product and service you received. If not, please give our helpful customer services team an opportunity to improve your experience right away. We are more than happy to help. Meanwhile, we also welcome you to post a Product Review so that others can benefit from your experience. We sincerely appreciate your time and input. To submit your review, please follow the steps below:

1. Log into your account on Amazon.com, click "Your Account" and then click "Your Orders".
2. Click on the specific Inphic product you purchased, and select the "Create your own review" button in the middle of the page
3. Now post an informative review or even shoot a video to help it be more visible

We're always looking for ways to improve, so thanks again for your business, support, and feedback. Warmest regards, Inphic Customer Support Team

 support@inphic.cn
 www.inphic.com



Documents / Resources



[inphic M1 PRO Dual Mode Mouse](#) [pdf] User Guide
002, 2ANT9002, M1 PRO Dual Mode Mouse, M1 PRO, Dual Mode Mouse