

inphic

inphic A1 Wireless
Three Mode Power
Display Mouse



inphic A1 Wireless Three Mode Power Display Mouse Instructions

[Home](#) » [inphic](#) » inphic A1 Wireless Three Mode Power Display Mouse Instructions 

Contents

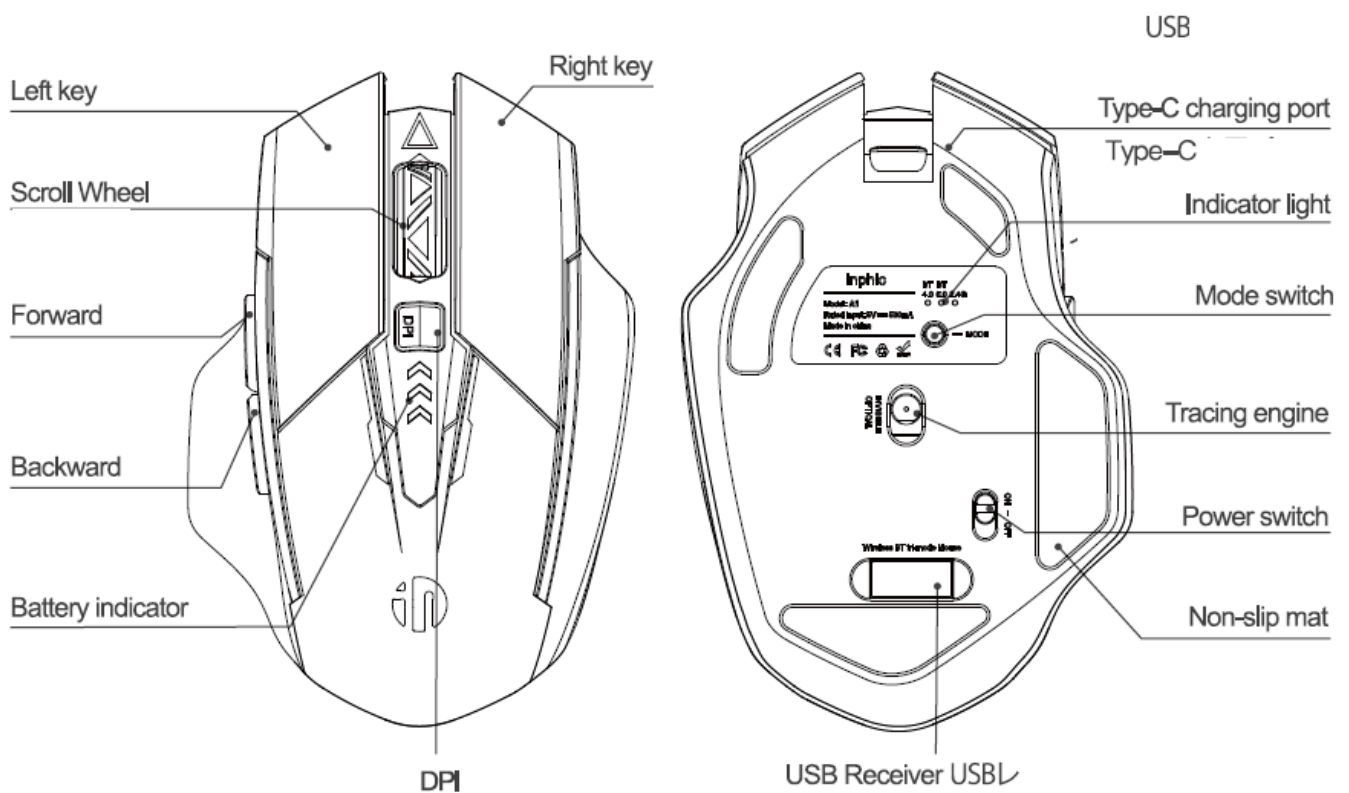
- [1 inphic A1 Wireless Three Mode Power Display Mouse](#)
- [2 KEY DESCRIPTION](#)
- [3 Wireless connections](#)
- [4 Package Contents](#)
- [5 TECHNICAL PARAMETERS](#)
- [6 OPERATING SYSTEM](#)
- [7 FCC Radiation Exposure Statement](#)
- [8 Documents / Resources](#)
 - [8.1 References](#)
- [9 Related Posts](#)

inphic

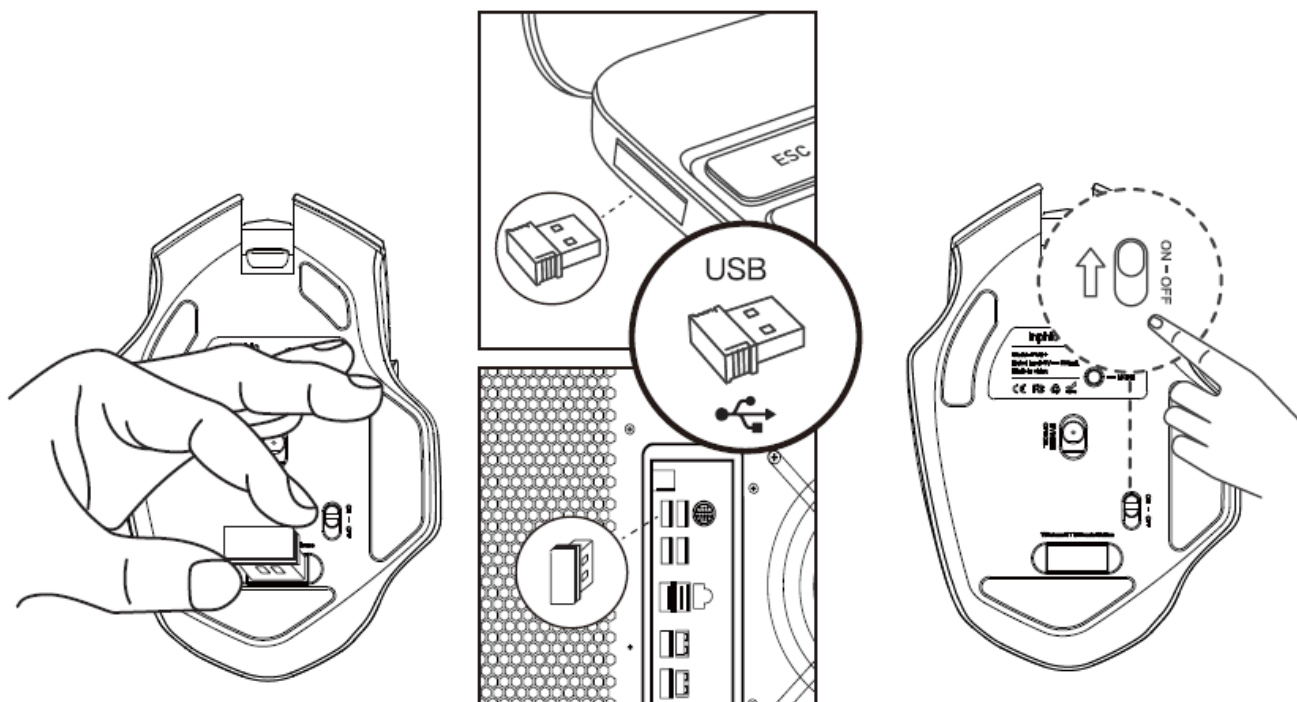
inphic A1 Wireless Three Mode Power Display Mouse



KEY DESCRIPTION



Tip: Press the middle DPI Key to adjust the DPI.

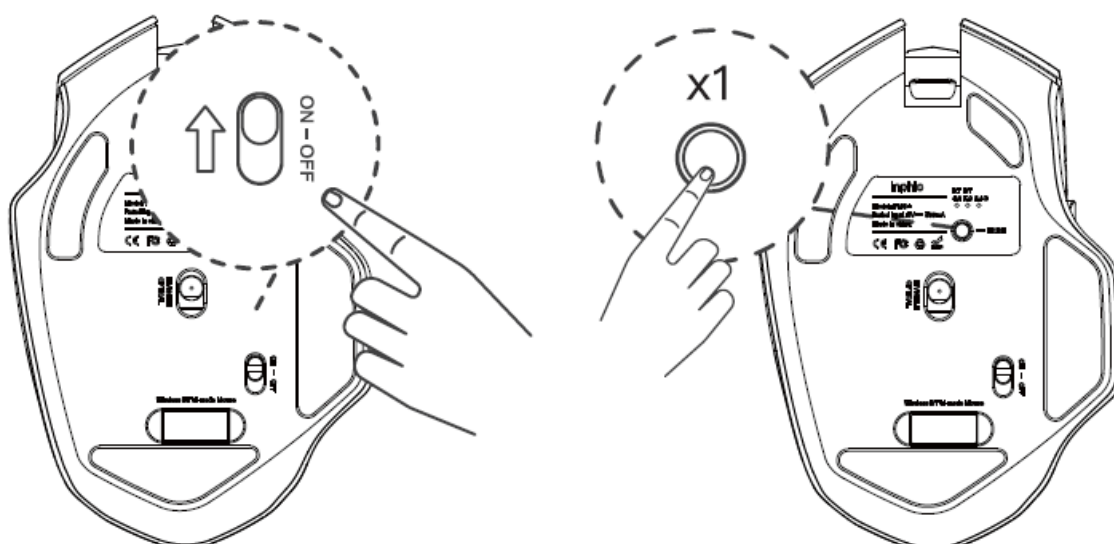


Wireless connections

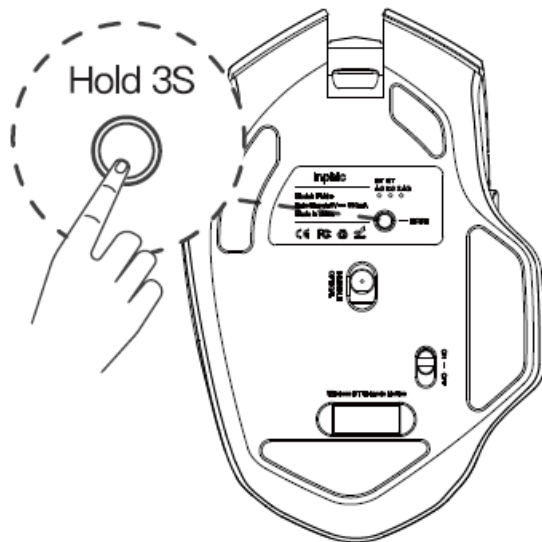
1. Take out the receiver.
2. Plug the USB receiver into the interface
3. Power on the mouse to use

BT connection

1. Turn on the mouse

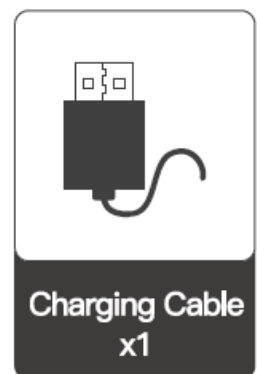
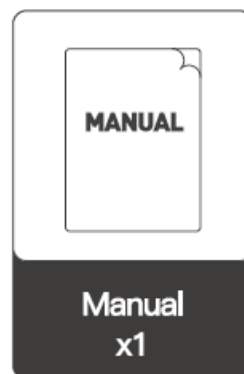
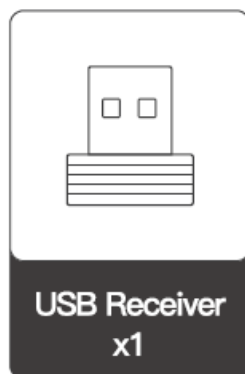
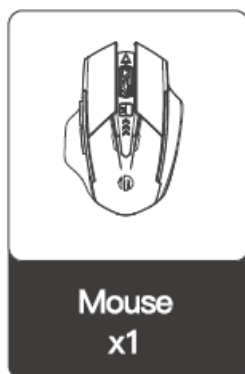


2. Press the button to switch to the desired BT mode (BT 5.0, the green light flashes slowly; BT 4.0, the blue light flashes slowly)



3. Long press for 3 seconds, the indicator light flashes quickly and enters the pairing mode
4. Turn on the device's BT search and Select the BT named BT5.0 Mouse or BT4.0 Mouse to connect

Package Contents



TECHNICAL PARAMETERS

- Model number:A1
- Max. speed: 14 inches/second
- Scroll Wheel (Y/N): Yes
- Wireless operating distance: Up to 10m if without any interference
- BT technology: BT 5.0/BT 4.0
- Wireless technology: Advanced 2.4 GHz wireless connectivity
- Built-in battery voltage: 3.7 V
- Rated operating current: SIOmA
- Tracking System: Optical tracking

OPERATING SYSTEM

Windows Vista, Windows 7, Windows 8, Windows 10 and above;
Android 5.0 and above; IOS13 and above; Mac os x 10.10 and above, Chrome OS; Linux kernel 2.6+

TIPS PLEASE NOTE

1. This mouse can generally be fully charged in 2—3 hours, and can be used for about 30 days after full charging.
(Battery life depends on different usage situations and the device.)
2. The left and right buttons are mute (s 25dB), excluding side keys and scroll wheel.
3. The mouse is shipped with a blue protective film on non-slip mats, please remove it before use.
4. Please note that one mouse is equipped with one specific USB receiver.
Please keep it well.
5. We use invisible infrared light technology for the optical tracking of this mouse so that the bottom part does not glow.
6. This mouse cannot be used as a wired mouse.

This device complies with part 15 of the FCC Rules. Operation is subject to the following two conditions:

1. This device may not cause harmful interference, and
 2. this device must accept any interference received, including interference that may cause undesired operation.
- Any Changes or modifications not expressly approved by the party responsible for compliance could void the user's authority to operate the equipment.


Note: This equipment has been tested and found to comply with the limits for a Class B digital device, pursuant to part 15 of the FCC Rules. These limits are designed to provide reasonable protection against harmful interference in a residential installation. This equipment generates uses and can radiate radio frequency energy and, if not installed and used in accordance with the instructions, may cause harmful interference to radio communications. However, there is no guarantee that interference will not occur in a particular installation. If this equipment does cause harmful interference to radio or television reception, which can be determined by turning the equipment off and on, the user is encouraged to try to correct the interference by one or more of the following measures:

- Reorient or relocate the receiving antenna.
- Increase the separation between the equipment and receiver.
- Connect the equipment into an outlet on a circuit different from that to which the receiver is connected.
- Consult the dealer or an experienced radio/TV technician for help.

FCC Radiation Exposure Statement

The device has been evaluated to meel general RF exposure requirements. The device can be used in portable exposure condition without restriction.

Documents / Resources

	inphic A1 Wireless Three Mode Power Display Mouse [pdf] Instructions A1, A1 Wireless Three Mode Power Display Mouse, Wireless Three Mode Power Display Mous e, Three Mode Power Display Mouse, Power Display Mouse, Display Mouse, Mouse
---	--

References

- [User Manual](#)

This website is an independent publication and is neither affiliated with nor endorsed by any of the trademark owners. The "Bluetooth®" word mark and logos are registered trademarks owned by Bluetooth SIG, Inc. The "Wi-Fi®" word mark and logos are registered trademarks owned by the Wi-Fi Alliance. Any use of these marks on this website does not imply any affiliation with or endorsement.