

INPECO CAB2C13M01 Automation System



# INPECO CAB2C13M01 Automation System User Manual

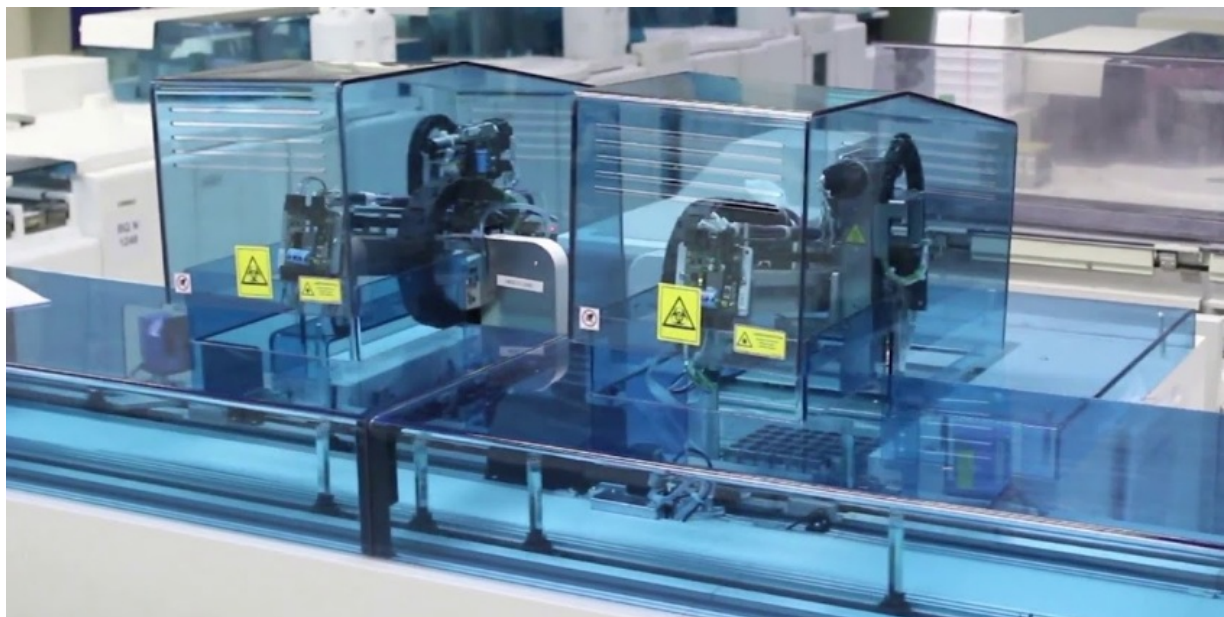
[Home](#) » [INPECO](#) » INPECO CAB2C13M01 Automation System User Manual 

## Contents

- 1 INPECO CAB2C13M01 Automation System
- 2 Product Information
- 3 Product Usage Instructions
- 4 USING
- 5 Storage and Retrieval Module
- 6 References
- 7 Documents / Resources
  - 7.1 References



## INPECO CAB2C13M01 Automation System



## Product Information

### Specifications

- **Product Name:** Automation System
- **Model Number:** 3U00000001-en-US.08

### Product Usage Instructions

#### Maintenance Procedures

1. Using a lint-free cloth, wipe the interchangeable pipe.
2. Roll the interchangeable pipe again and insert it into the chute. Slide it along the chute length.
3. Put manually the head of the Desealer back in place.
4. Install the Desealer Module cover.
5. Set the Desealer Module in Online status:
  1. Click on Overview and select Desealer.
  2. Click on Status menu.
  3. Select the On-line function button.
  4. Wait until the Module is set to online.

#### Storage and Retrieval Module

1. Empty the condensation liquid tank when full by Good Laboratory Practices.

#### Consumables

Some Automation Modules need consumables for routine processes. The list of consumables includes:

Description	Contents
Sealer coil	18000 seals

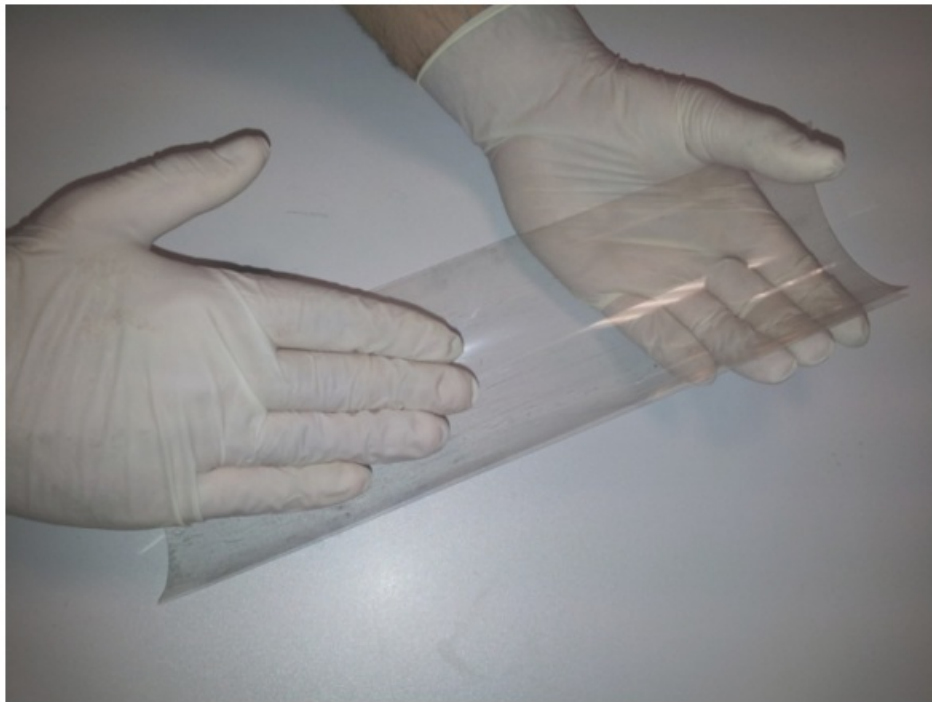
#### FAQs

- **Q: How do I set the Desealer Module back online?**

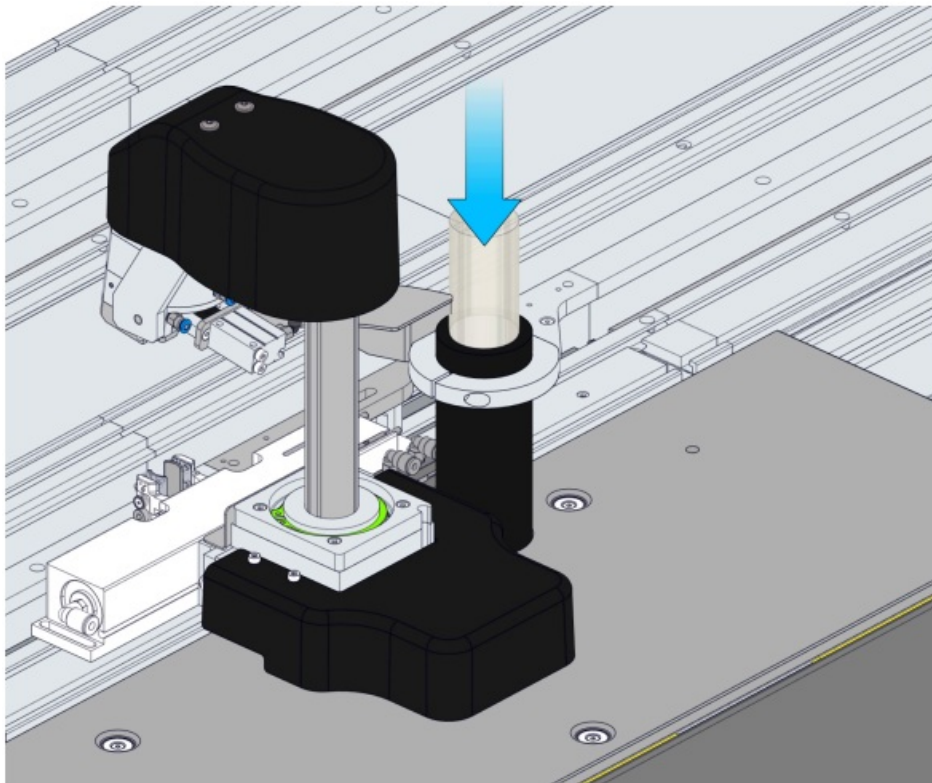
A: Follow the steps outlined in the Maintenance Procedures section under Desealer Module.
- **Q: What should I do with the condensation liquid tank of the refrigerator unit?**

A: Empty the condensation liquid tank when full following the procedure described under Storage and Retrieval Module.

## USING



1. Using a lint-free cloth, wipe the interchangeable pipe.
2. Roll the interchangeable pipe again and insert it into the chute. Slide it all along the chute length.



3. Put manually the head of the Desealer back in place.
4. Install the Desealer Module cover.
5. Set the Desealer Module in On-line status:
  - a. Click on Overview and select Desealer
  - b. Click on Status menu.
  - c. Select On-line function button..
  - d. Wait until the Module is set to On-line.

### Verification steps

Verify that the Desealer Module is back online.

## Storage and Retrieval Module

### Empty the condensation liquid tank

- At the discretion of Laboratory, the condensation liquid of the refrigerator unit can be either collected in a tank or drained in a waste tube of the Laboratory.
- The following procedure describes how to empty the condensation liquid tank of the refrigerator unit when full.

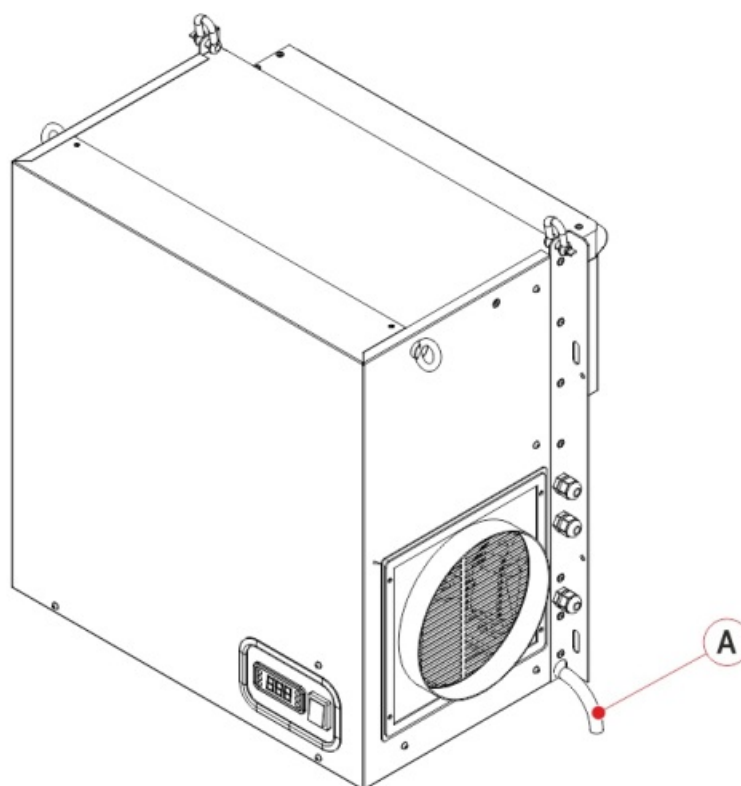
#### Prerequisites

Authorized personnel:	Operator
Conditions:	None
Tools and materials:	Condensation liquid tank (provided by the Laboratory)
Procedures:	None

#### Task steps

1. Locate the condensate drain pipe (Figure 145 – A) of the refrigerator unit and the condensation liquid tank.

**Figure 145:**



2. Empty the condensation liquid tank when full in accordance with the Good Laboratory Practices.

#### Verification steps

None.

Some of Automation Modules need of consumables for routine process. The list of consumables that can be

supplied is shown below.1

**Table 1:** Consumables

Module	Description	Image	Notes
Sealer Module	Sealer coil. Contents: 18000 seals		None.

Refer to the section about Analyzers/Custom Modules for the possible list of consumables addressed to the specific Analyzers/Custom Modules.

## References

### Access levels

Automation Software provides 4 profiles for User access, with levels increasing from 1 to 4.

**Table 2:** Profiles for User access

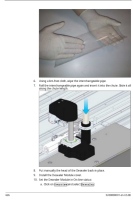
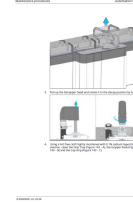


Level	Profile	Access Level	User Type	Validation Level
1	Laboratory Technician	Operator	Clinical	V1
2	Laboratory Supervisor	Supervisor		V2
3	Physician	Supervisor	Clinical	V3
4	Head Physician			V4

Every Laboratory User is assigned a Username and a personal (non-transferable) password. Furthermore, every User is configured according to one of the levels listed, to log in only to the functions corresponding to their level. New users can be added by the Head Physician, or by contacting technical support. In addition, the Automation System provides other 2 profiles for User access.

**Table 3:** Other User levels

Level	Profile	Access Level	User Type	Validation Level
n/a	Guest	Guest	Viewer	n/a
n/a	FSE	FSE	Technical support	n/a

[inpeco.com](http://inpeco.com)

	<p><a href="#">INPECO CAB2C13M01 Automation System</a> [pdf] User Manual CAB2C13M01 Automation System, CAB2C13M01, Automation System</p>
	<p><a href="#">INPECO CAB2C13M01 Automation System</a> [pdf] User Manual CAB2C13M01 Automation System, CAB2C13M01, Automation System</p>
	<p><a href="#">INPECO CAB2C13M01 Automation System</a> [pdf] User Guide CAB2C13M01 Automation System, CAB2C13M01, Automation System</p>
	<p><a href="#">INPECO CAB2C13M01 Automation System</a> [pdf] User Manual CAB2C13M01 Automation System, CAB2C13M01, Automation System</p>

References

- [User Manual](#)

[Manuals+](#), [Privacy Policy](#)

This website is an independent publication and is neither affiliated with nor endorsed by any of the trademark owners. The "Bluetooth®" word mark and logos are registered trademarks owned by Bluetooth SIG, Inc. The "Wi-Fi®" word mark and logos are registered trademarks owned by the Wi-Fi Alliance. Any use of these marks on this website does not imply any affiliation with or endorsement.