



INOGENI Toggle USB 3.0 Switcher Hub User Guide

[Home](#) » [INOGENI](#) » INOGENI Toggle USB 3.0 Switcher Hub User Guide 

Contents

- [1 INOGENI Toggle USB 3.0 Switcher Hub](#)
- [2 VERSION HISTORY](#)
- [3 TYPICAL APPLICATION](#)
- [4 BLOCK DIAGRAM](#)
 - [4.1 DEVICE INTERFACES](#)
- [5 LEDS BEHAVIOR](#)
 - [5.1 OPERATING MODES](#)
- [6 SPECIFICATIONS](#)
- [7 SERIAL COMMUNICATION PROTOCOL](#)
- [8 INOGENI CONTROL APP](#)
- [9 Documents / Resources](#)
- [10 Related Posts](#)



INOGENI Toggle USB 3.0 Switcher Hub



VERSION HISTORY

Version	Date	Description
1.0	April 9, 2021	First release
1.1	May 20, 2021	Update RS232 commands section. Change « HOSTx » for « PCx ».
1.2	June 15, 2021	Adding block diagram.
1.3	June 22, 2021	Add GPIN level mode

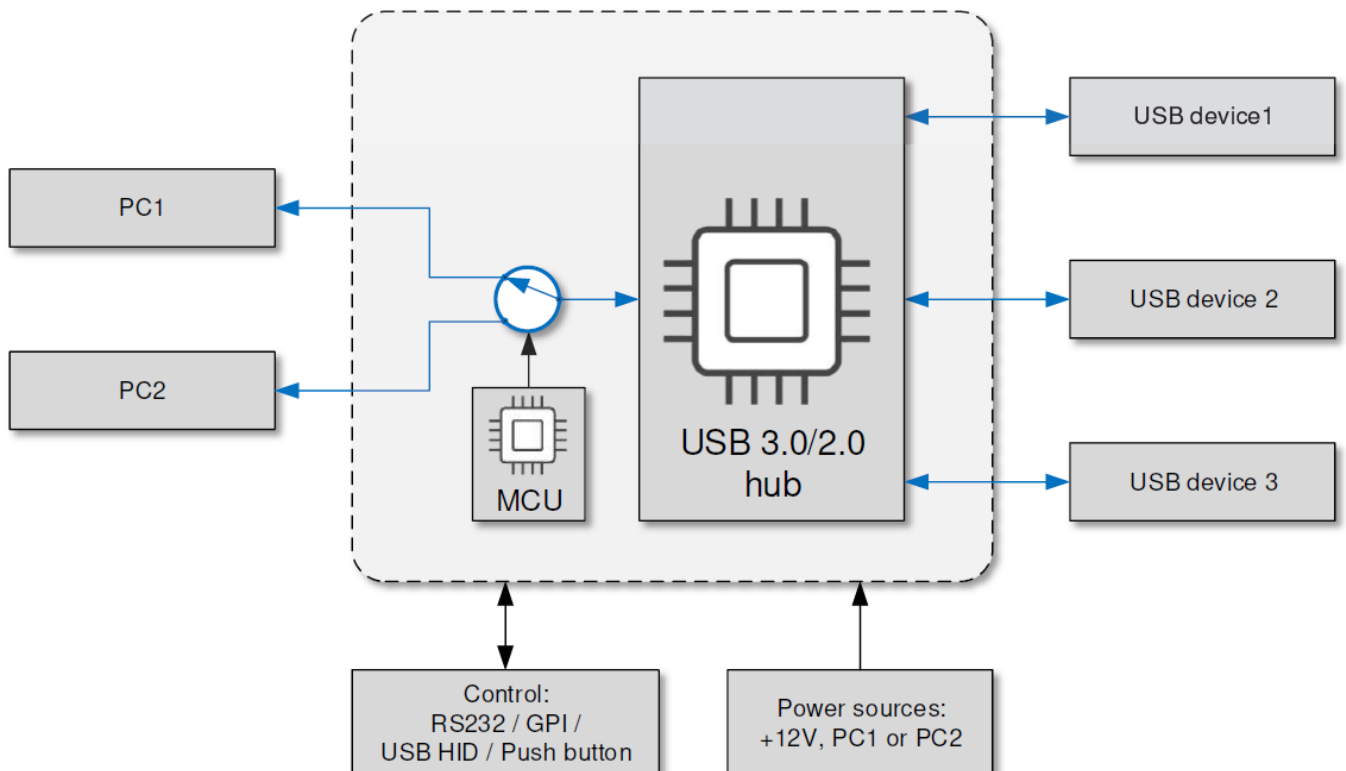
TYPICAL APPLICATION

Here is a typical connection diagram used for the TOGGLE device in a video conferencing setup.



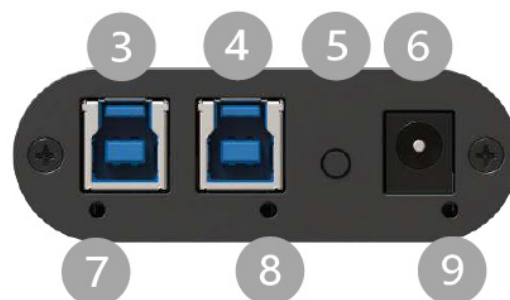
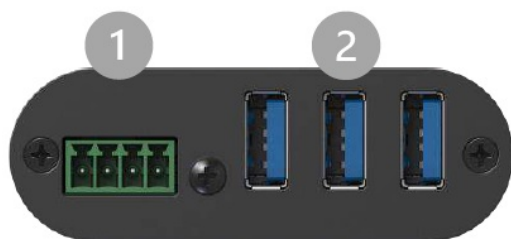
BLOCK DIAGRAM

Here is a simple block diagram of the TOGGLE unit.



DEVICE INTERFACES

Here are the devices interfaces.



1. RS232 and GPIN interfaces
2. 3 x USB-A ports for devices
3. PC #1 USB-B port
4. PC #2 USB-B port
5. Push-button
6. +12V power input
7. PC #1 led indicator
8. PC #2 led indicator
9. Power indicator

LEDS BEHAVIOR

Here are the leds behavior:

PCx LEDs	
OFF	No PC connected.
SOLID	PC currently selected.
BLINK	PC detected but not currently selected.
Power LED	
OFF	No power present on board.
SOLID	Power detected.
BLINK	Over-current detected on USB devices.
LED Intensity	FULL intensity if power is provided through external power supply. MEDIUM intensity if power is provided through USB connections (PC1 or PC2).

IMPORTANT: If all leds are blinking in sync, this means the unit is in the upgrade process. This happens only while you upgrade the unit.

OPERATING MODES

There are two modes supported by the device. They will be explained here.

Automatic

This is the default mode. This mode will switch automatically to the last PC1 connected. If the current PC is disconnected, the device will switch back to the other PC if it is detected. Push-button action and remote control are also supported.

Manual

The manual mode will enable you to force a specific PC selection. Push-button action and remote control are also supported. It is possible to turn OFF both PCs in manual mode.

These modes can be set through our INOGENI Control App or through the RS232 interface. The mode will be saved onboard the device.

1 PC: any host computer or laptop.

SPECIFICATIONS

Here is the complete specification.

Physical details	
Dimensions (W x L x H)	70 x 83 x 23 mm
Power supply	12V
Power consumption	Up to 1.2A
Weight	113 g
Package content	2 x USB 3.0 Type-B to Type-A cables. 1 x terminal block connection. 1 x 12V power supply.
Operating temperature	0° to 45° C (32° to 113° F)
Storage temperature	-40° to 105° C (-40° to 221° F)
Origin	Canada
Warranty	2 years
General specifications	
USB host ports	2 x Type-B USB 3.0/2.0 compatible.
USB device ports	3 x Type-A USB 3.0/2.0 compatible.
Serial interface	Baud rate: 9600 For control purpose. See Serial communication protocol section for more details.
Push-button	Physical switch to select host.
GPIN	Contact-closure control. Controlled by open-drain IO (short to ground) or driven IO. Supported voltage range: 0V to +12V max. Voltage threshold is 0.7V for HW revision 2.0. Voltage threshold is 2.3V for HW revision 3.0+ ² .
Device current limit	1.8A shared current limit for all 3 x USB device ports. You can monitor current consumption through RS232 and our Control App.
Software	
Upgrade	Field upgradable through our INOGENI Control App.
Control	Automatic, manual or remote control. Current configuration is saved onboard.

Please use the Control App from INOGENI to identify the hardware revision of your product.

SERIAL COMMUNICATION PROTOCOL

Here is the complete list of commands provided through the serial connection: Pinout is indicated on the enclosure.

Baud rate: 9600 // Data bits: 8 // Stop bits: 1 // Parity: None // Flow control: None

Commands	Arguments	Return	Function description
FW	NA	"FW_VER:X.Y" where X = MAJOR and Y = MINOR version.	Get firmware version.
SLCK	0,1	NA	Set/unset button LOCK
GLCK	NA	0,1	Get button LOCK status.
SH	0,1,2	NA	Select PC. 0=OFF 1=PC1 2=PC2
GH	NA	0,1,2	Get PC selected. 0=OFF 1=PC1 2=PC2
GCAUSE	NA	"HOST_OFF" "HOST_CHG" "BTN" "CMD"	Get last PC switching cause: - HOST_OFF: No inputs selected. PC selection process is changing between PC1 and PC2 or both hosts are OFF. HOST_CHG: PC1 or PC2 appeared / disappeared in mode AUTO; - BTN: Button has been used to change PC selection. - CMD: RS232 command has been used to change PC selection.
GHV	1,2	"X.YZV" Where X = units value YZ = decimal value	Get PCx voltage.
GDI	1,2,3	"X.YZA" Where X = units value YZ = decimal value	Get device X current.
SGMOD	0,1	NA	Set GPIN mode: (pulse = '0', level = '1')
GGMOD	NA	0,1	Get GPIN mode (pulse = '0', level = '1')
GHPW	1,2,3	0,1	Get HUB power status. If report '0', then the HUB had turned OFF the specified USB port (overcurrent).
SAVE	NA	NA	Save settings.
SEV	0,1	NA	Set/clear events (prints).
SM	0,1	NA	Set/clear manual mode.(auto='0', manual='1')
GM	NA	0,1	Get manual mode status.
DEF	NA	NA	Force factory default settings
RST	NA	NA	Reset MCU.
H	NA	List of all commands	Get user help.

All commands will append to the return values 2 possible answers: "ACK" or "NACK" with "/n/r" chars.

GPIN MODE

With the introduction of firmware 1.1+, there are two (2x) GPIN modes: pulse mode and level mode.

- The GPIN pulse mode is the factory default. Each transition from HIGH to LOW on GPIN pin will force a PC change. See the following picture for the explanation of the mode.

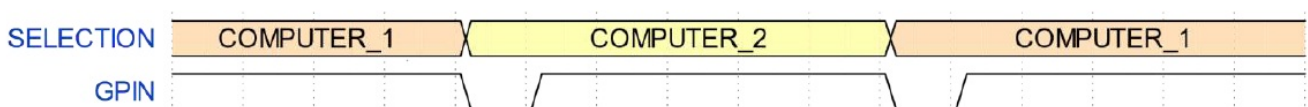


Figure 1 : GPIN Pulse Mode

- The GPIN level mode uses a level “0” (short to ground) and “1” (open or voltage higher than threshold) to select a specific PC.
 - A level “0” or short to ground: PC2 is selected.
 - A level “1” or open: PC1 is selected.

IMPORTANT NOTES ABOUT GPIN

- It is recommended to set the Toggle in manual mode with the UART command “sm” when using the GPIN (especially with level mode). If the Toggle is used in auto mode, any changes on the PCx side will affect the PC selected even if the GPIN level mode is used.
- It is also recommended to lock the button with the UART command “slck” when the GPIN is used in level mode.
- For Toggle with a hardware revision of 2.0, you need to connect the external power supply to use the GPIN. The Control App software from INOGENI will report the exact hardware revision.

SETTINGS

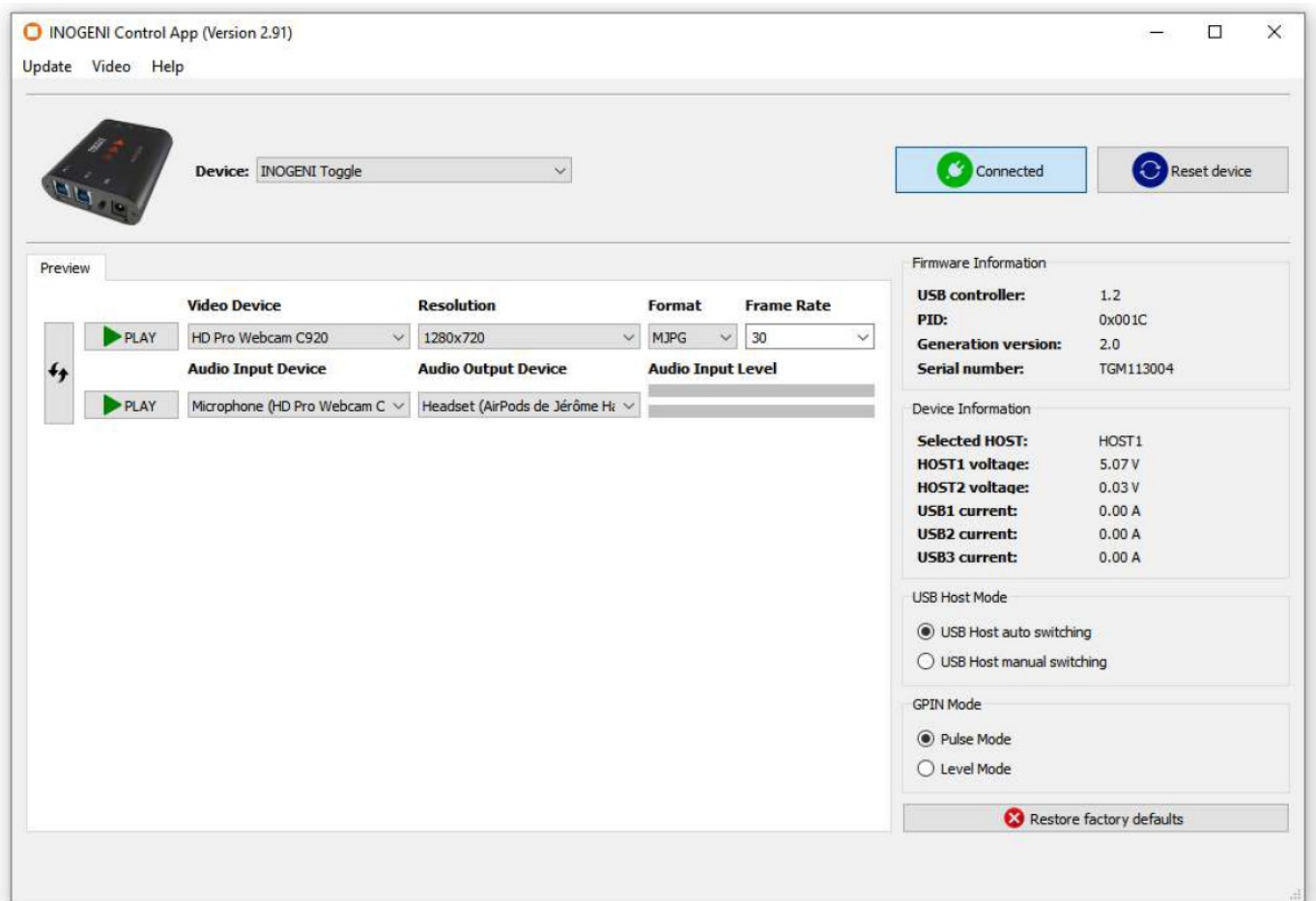
Some settings can be saved with the “SAVE” command. These settings are:

- Presence or absence of events on serial ports. Events are used for diagnostic. An event returned by the unit always starts with the string “EVT:” The “SEV” serial command is used to enable/disable the events. This command also automatically saves this setting inside the device.
- Manual or automatic mode for PC selection. The “SM” command is used to switch between manual and automatic modes. This command also automatically saves this setting inside the device.
- If manual mode is selected and the GPIN level mode is disabled: the specific PC selected is also saved. The “SH” command is used to select between PC1, PC2 or OFF. This command also automatically saves this setting inside the device.
- If the button is locked or not. The “SLCK” command is used to select between these modes. This command also automatically saves this setting inside the device.
- If the GPIN level mode is selected or not. The command “SGMOD” is used to select between these modes. This command also automatically saves this setting inside the device.
- The “DEF” command restores the default settings of the device. It will take effect immediately. The factory default settings are:

1. No events.
2. Automatic mode for PCx selection.
3. GPIN_LEVEL disabled.
4. Button unlocked.

INOGENI CONTROL APP

You can use our Control App to monitor firmware information, upgrade and configure your unit.



SUPPORT

Engineered by video professionals, for video professionals, it is your most compatible USB 3.0 device. INOGENI expertise at your fingertips:


- Expert Technical Support team at support@inogeni.com for immediate help or if you have any technical question about our products.
- Extensive Knowledge Base to learn from other customers experiences.

© Copyright 2021 by INOGENI INC. All Rights Reserved.

INOGENI name and logo are trademarks or registered trademark of INOGENI. Use of this product is subject to the terms and conditions of the license and limited warranty in effect at the time of purchase. Product specifications can change without notice.

INOGENI, Inc.
979 de Bourgogne avenue, suite 530
G1W 2L4 (QC) Canada

Documents / Resources

 The image shows a black rectangular USB 3.0 switcher hub with the INOGENI logo and 'INOGENI TOGGLE' text. To the left of the hub is a vertical column of 16 small circular icons, each containing a number from 1 to 16. Below the hub, the text 'User guide' is visible. <p>INOGENI TOGGLE</p> <p>User guide</p>	<p>INOGENI Toggle USB 3.0 Switcher Hub [pdf] User Guide</p> <p>Toggle USB 3.0 Switcher Hub, Toggle, USB 3.0 Switcher Hub, 3.0 Switcher Hub, Switcher Hub, Hub</p>
--	--