



innuos Pulse Network Player User Guide

[Home](#) » [innuos](#) » innuos Pulse Network Player User Guide 

Contents

- [1 innuos Pulse Network Player](#)
- [2 Product Information](#)
- [3 Product Usage Instructions](#)
- [4 PULSE Rear Panel Diagram](#)
- [5 Documents / Resources](#)
- [6 Related Posts](#)



innuos Pulse Network Player



Product Information

The product is called “PULSE” and it features a rear panel with 9 different ports. The ports are labeled as follows:

Port Number	Port Label
1	AES/EBU Output
2	Digital Coaxial Output
3	Digital Optical Output
4	4x USB 3.0
5	Ethernet input from Router
6	Ethernet AUX
7	HDMI Output (service only)
8	Mains Power Input
9	Mains Power Switch

The product comes with an app called “InnuosSense” which needs to be downloaded to get started.

Product Usage Instructions

1. Download the “InnuosSense” app from the app store on your device.
2. Connect the PULSE to a power source using the Mains Power Input and Mains Power Switch.
3. Connect the PULSE to your router using the Ethernet input from Router.
4. Connect any other devices to the PULSE using the 4x USB 3.0 ports.
5. Use the Digital Coaxial Output, Digital Optical Output, or AES/EBU Output to connect to your audio system.
6. If necessary, use the HDMI Output (service only) for maintenance purposes.
7. Open the “InnuosSense” app on your device.
8. Follow the setup instructions provided in the app to configure your PULSE and start using it.

Thank you for buying our PULSE Network Music Player and welcome to the Innuos family!
This Quick Start Guide will show you how to get started with your new music player.
For further details, troubleshooting and help with advanced setups, visit our support page at <https://innuos.com/support/>.

At Innuos, we appreciate your feedback. Once you download and start using our Sense app to play your music, we encourage you to register at our Feedback Zone at <https://feedback.innuos.com/> where you can help shape future software development by providing your thoughts and feature requests.

You can also join us on social media to keep informed about events, new features and products here:



facebook.com/innuos

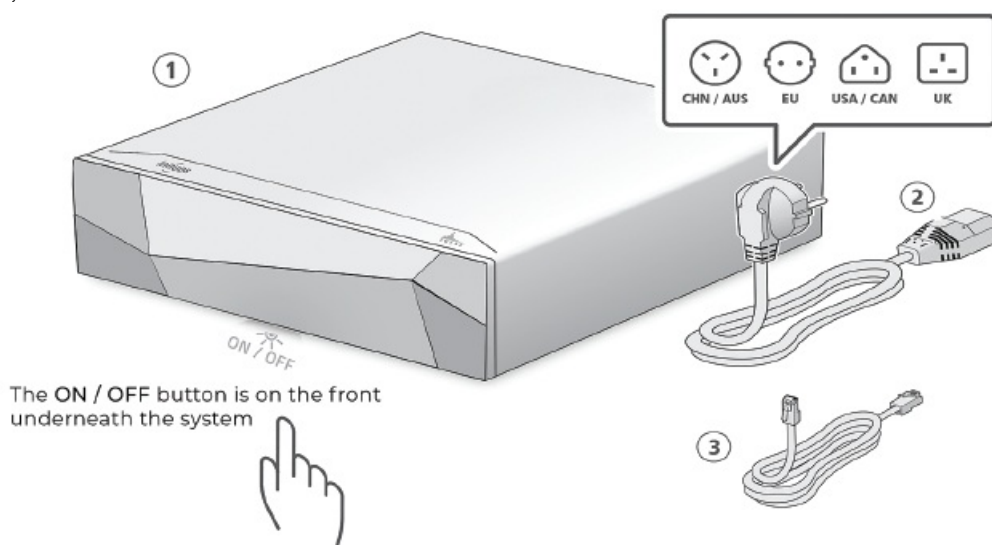


instagram.com/innuos



twitter.com/Innuos

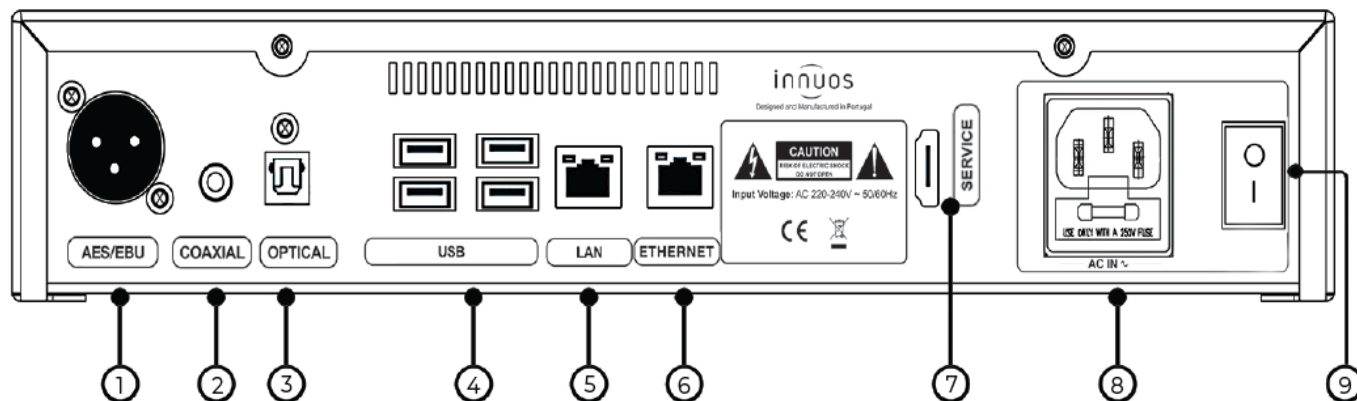
Enjoy the music, The Innuos Team



1. Innuos PULSE Network Music Player
2. Mains Power Cable
3. 2m Ethernet Cable

- To turn off the PULSE press the ON / OFF button once and wait 1 – 2 seconds to shutdown.
- Do not hold ON / OFF button down.

PULSE Rear Panel Diagram




1. AES/EBU Output
2. Digital Coaxial Output
3. Digital Optical Output
4. 4x USB 3.0
5. Ethernet input from Router
6. Ethernet AU
7. HDMI Output (service only)
8. Mains Power Input
9. Mains Power Switch

To get started, download the Innuos Sense app at the following stores:



You can also access our Innuos Sense app using a modern browser at: my.innuos.com

Documents / Resources

 PULSE Quick Start Guide	innuos Pulse Network Player [pdf] User Guide Pulse Network Player, Network Player, Player
---	--