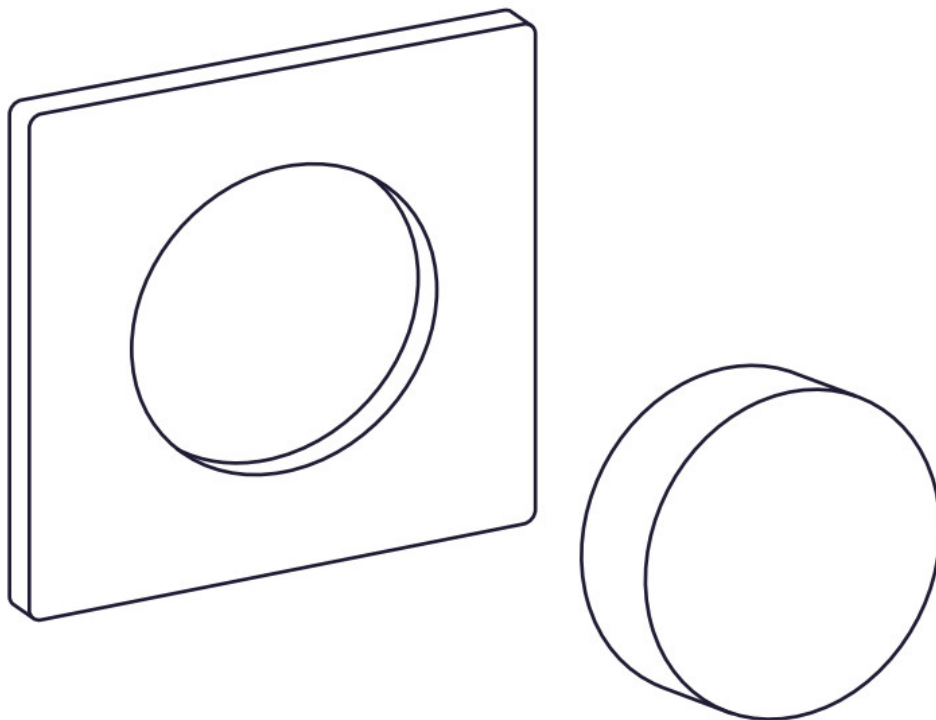




innr RC21x Smart Lighting Installation Guide

[Home](#) » [innr](#) » innr RC21x Smart Lighting Installation Guide 





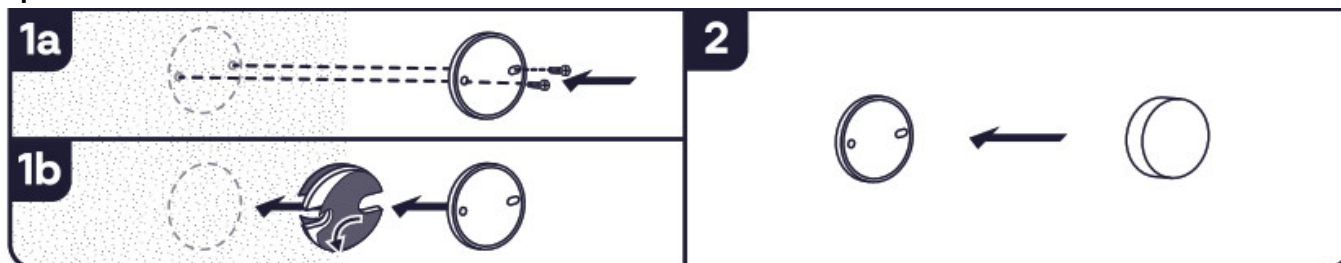
RC21x

Contents

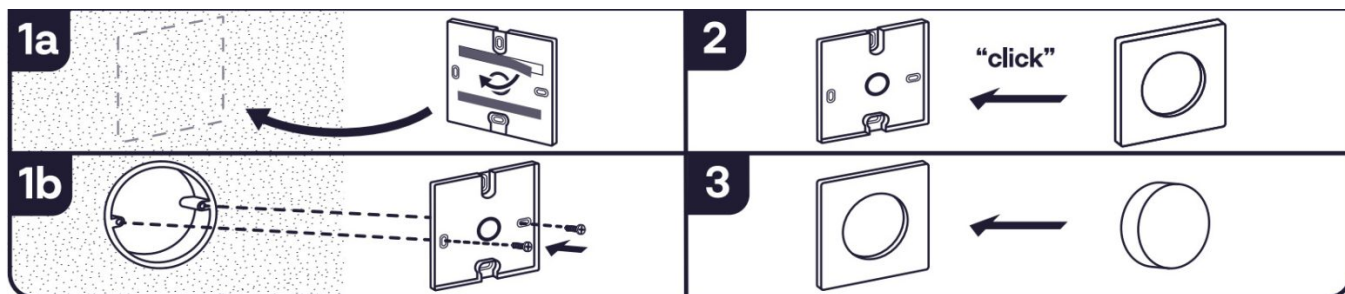
- [1 Installation](#)
- [2 installation](#)
- [3 INstallation without Inner bridge](#)
- [4 Button overview](#)
- [5 Factory reset](#)
- [6 Declaration of Conformity](#)
- [7 Documents / Resources](#)
- [8 Related Posts](#)

Installation

Option1



Option2



installation

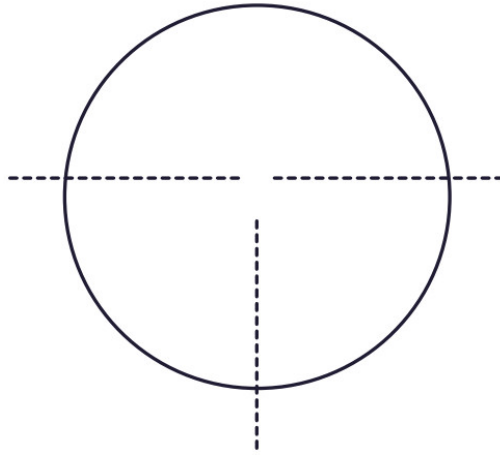
<p>Remove the plastic tab.</p>	<p>Open the Inner App and make sure your Inner Bridge</p>
<p>Scan the QR-code on the remote.</p>	<p>Press "Next step" to start searching for the de</p>

INstallation without Inner bridge

For direct use with smart lights (without Inner Bridge) or with a third party bridge please visit:

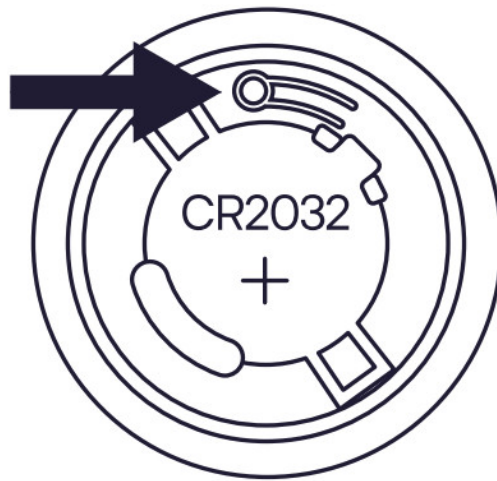
www.innr.com/service

Button overview



- Short press: On / Off

Factory reset



Press and hold the reset button for 3 seconds.

Important safety instructions

- For indoor use only.
- Do not disassemble the product: if any part is damaged, the product should not be used.
- Do not immerse in water.
- For cleaning, use a damp cloth, never a strong cleaning
- Keep these instructions for future use.

Declaration of Conformity

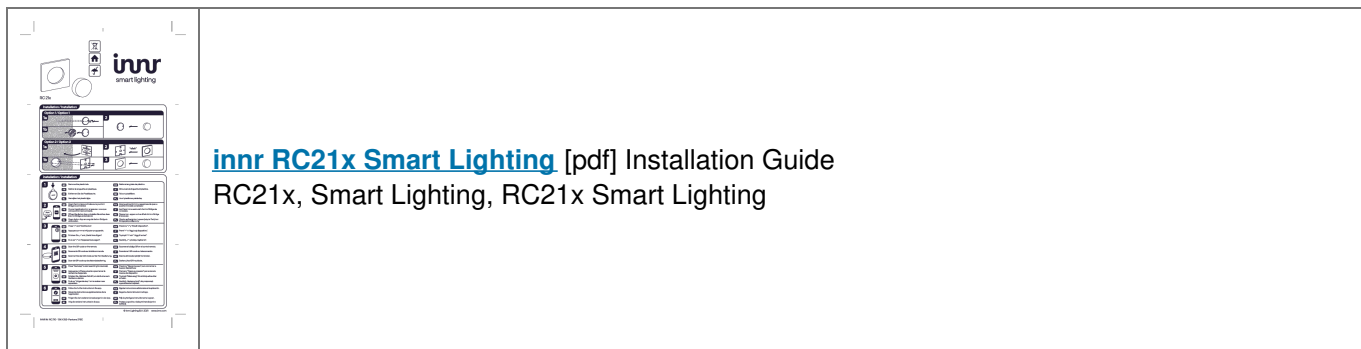
Hereby, Inner Lighting BV declares that the radio equipment types RC 210 are in compliance with Directive 2014/53/EU.

The full text of the EU declaration of conformity is available at the following internet

[addresswww.innr.com/en/downloads](http://www.innr.com/en/downloads) Zigbee Frequency: 2.4 GHz (2400 – 2483.5 MHz) – **RF** power max 10 dBm

INNRM IM RC 210-X253-Pantone 276C

Documents / Resources



[innr RC21x Smart Lighting](#) [pdf] Installation Guide
RC21x, Smart Lighting, RC21x Smart Lighting