



innr RC210 Smart Button Instruction Manual

[Home](#) » [innr](#) » innr RC210 Smart Button Instruction Manual 

innr RC210 Smart Button Instruction Manual

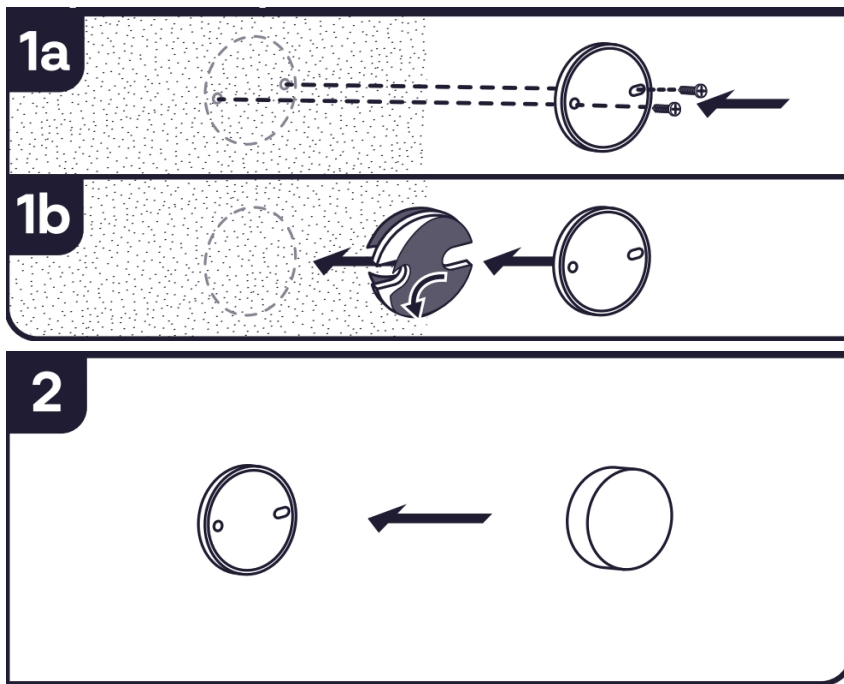


Contents

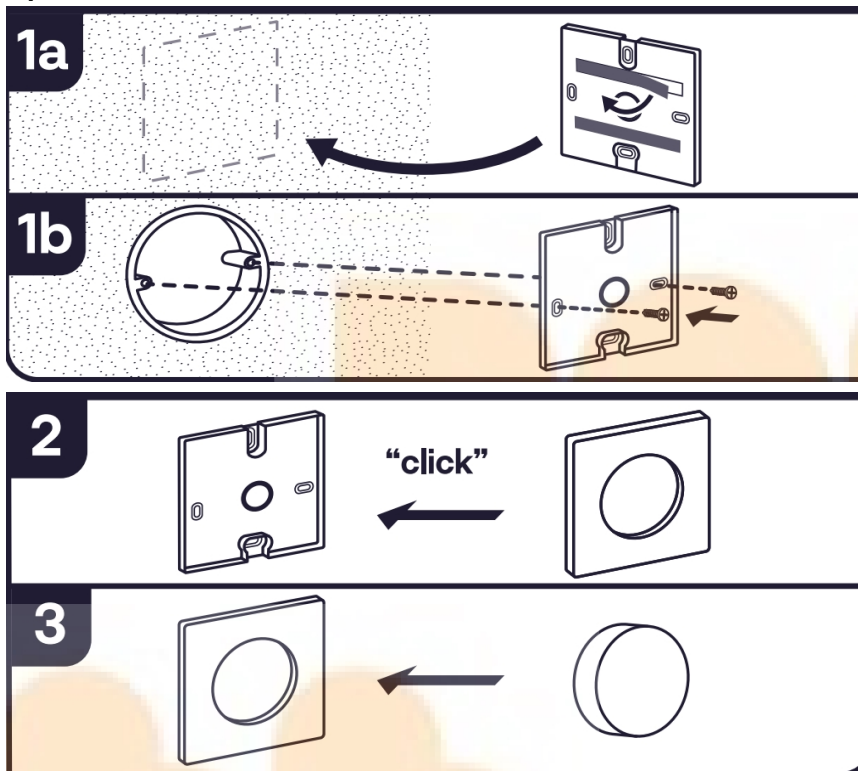
- [1 Installation](#)
- [2 Installation without Innr bridge](#)
- [3 Button overview](#)
- [4 Factory reset](#)
- [5 Important safety instructions](#)
- [6 Declaration of Conformity](#)
- [7 Documents / Resources](#)
- [8 Related Posts](#)

Installation

Option 1:



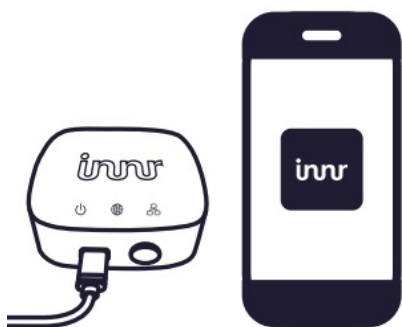
Option 2



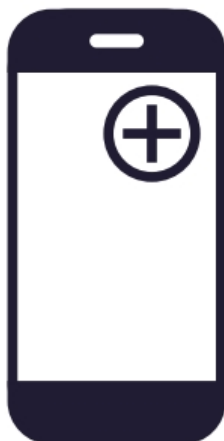
1. Remove the plastic tab.



2. Open the Innr App and make sure your Innr Bridge is connected.



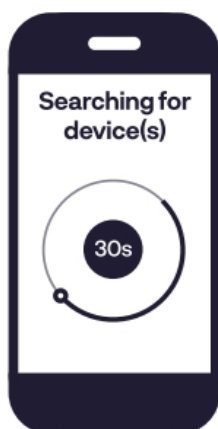
3. Press “+” and “Add Device”.



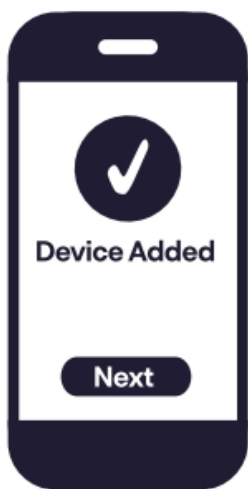
4. Scan the QR-code on the remote.



5. Press “Next step” to start searching for device(s).



6. Follow the further instructions in the app.



Installation without Innr bridge

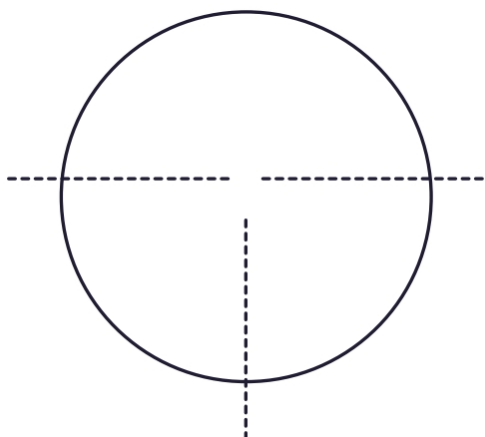
For direct use with smart lights (without Innr Bridge) or with a third party bridge please visit:
www.innr.com/service.

Button overview

Short press: On/Off

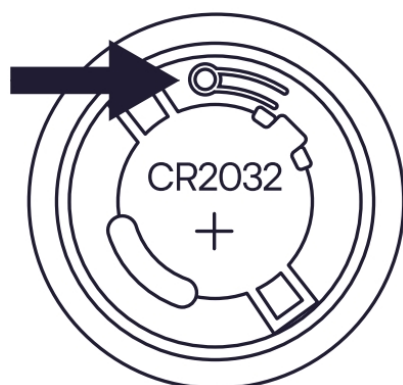
Double click: scenes

Long press: Dim up/Dim down



Factory reset

Press and hold the reset button for 3 seconds.



Important safety instructions

- For indoor use only.
- Do not disassemble the product; if any part is damaged, the product should not be used.
- Do not immerse in water.
- For cleaning, use a damp cloth, never a strong cleaning agent.
- Keep these instructions for future use.

Declaration of Conformity

Hereby, Innr Lighting BV declares that the radio equipment types RC 210 are in compliance with Directive 2014/53/EU. The full text of the EU declaration of conformity is available at the following Internet address: www.innr.com/en/downloads Zigbee Frequency: 2.4 GHz (2400 – 2483.5 MHz) – RF power: max 10 dBm



Documents / Resources

A thumbnail image of the instruction manual for the Innr RC210 Smart Button. The cover features the Innr logo at the top, a photograph of the smart button, and a list of contents in multiple languages.	<p>innr RC210 Smart Button [pdf] Instruction Manual RC210, Smart Button, RC210 Smart Button, Button</p>
---	---