

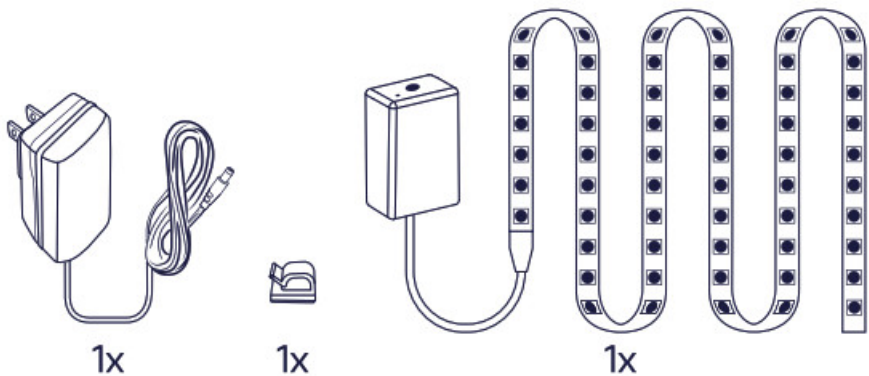


innr FL140C Smart Flex Light User Guide

[Home](#) » [innr](#) » innr FL140C Smart Flex Light User Guide 



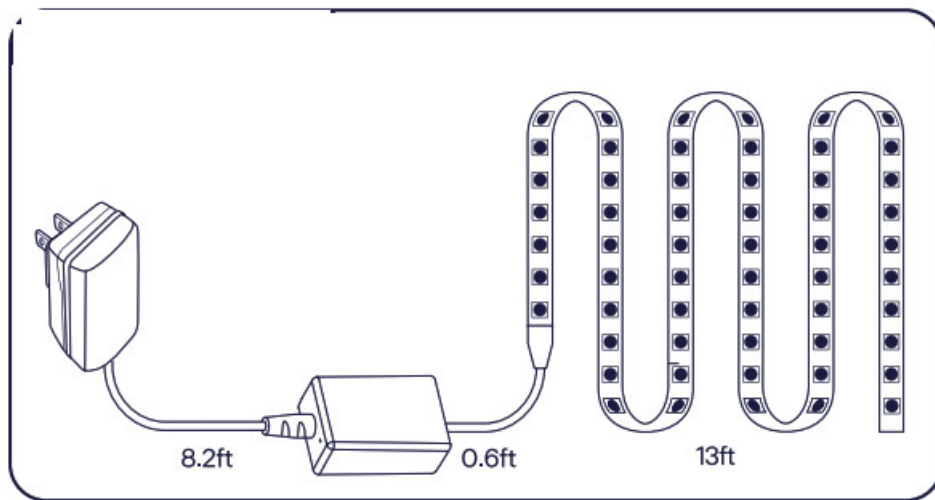
FL 140 C User Guide



Contents

- [1 System Overview](#)
- [2 Installation](#)
- [3 Connection](#)
- [4 Factory Reset](#)
- [5 LIMITED WARRANTY:](#)
- [6 CAUTIONS and OPERATING INSTRUCTIONS:](#)
- [7 Documents / Resources](#)
- [8 Related Posts](#)

System Overview



Wireless specification:

Wireless RF mode frequency band: 2400-2483.5 MHz

Wireless communications protocol: IEEE 80215.4

Operating channels: channels 11- 26

Environmental specification:

Temperature (operation): -4°F – 95°F

Temperature (storage): -40°F -140°F


Relative humidity s 95% non condensing

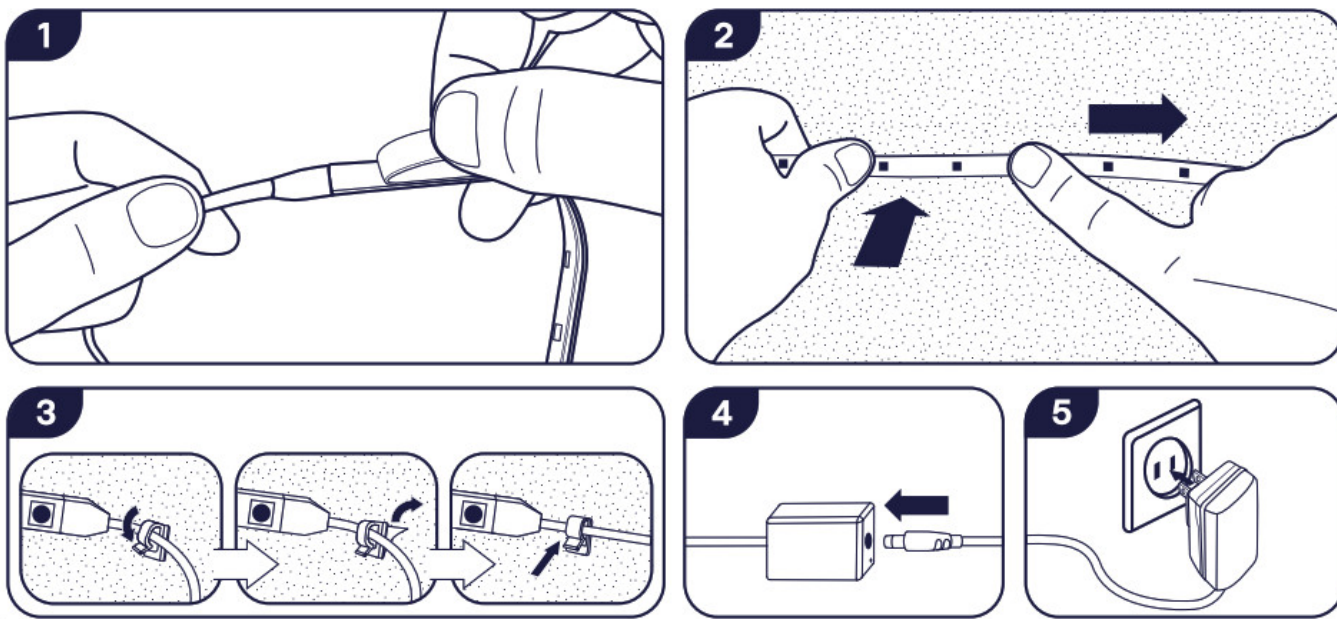
Standby power < 0.2W

Installation



Degrease the surface on which you will stick the LED strip.



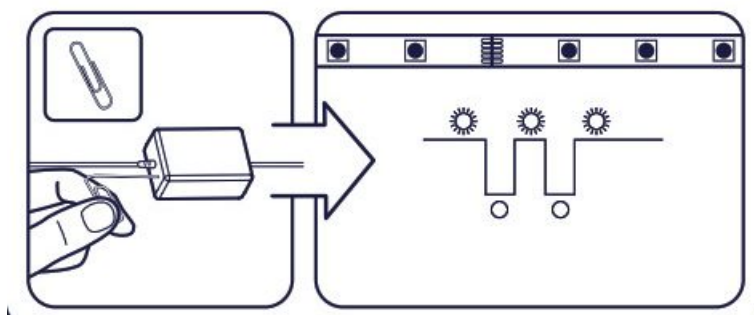


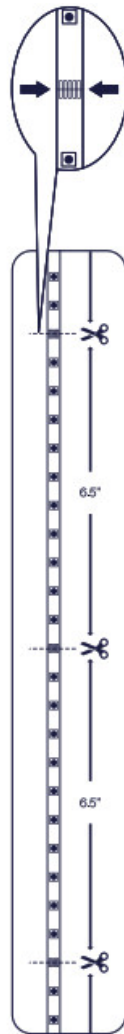
Connection

To connect the lamp to the bridge, follow the instructions in the mobile app.



Factory Reset





FCC Certification:

FCC ID:2AVYZINNRM11

Supplier's Declaration of Conformity

FL140C

This device complies with part 15 of the FCC Rules. Operation is subject to the following two conditions

1. This device may not cause harmful interference, and
2. this device must accept any interference received, including interference that may cause undesired operation.

Supplier's name: Opened Box Returns LLC

Supplier's address (L1SA): 1790 Swarthmore Ave., Unit 8 Lakewood NJ 08701 USA Supplier's phone number and/or internet contact information: usaservice@innr.com

Caution: Any changes or modifications not expressly approved by the party responsible for compliance could void the user's authority to operate this equipment.

Note: This device has been tested and found to comply with the limits for a Class B digital device, pursuant to part 15 of the FCC Rules. These limits are designed to provide reasonable protection against harmful interference in a residential installation. This device generates, uses, and can radiate radio frequency energy and, if not installed and used in accordance with the instructions, may cause harmful interference to radio communications. However, there is no guarantee that interference will not occur in a particular installation. If this equipment does cause harmful interference to radio or television reception, which can be determined by turning the equipment off and on, the user is encouraged to try to correct the interference by one or more of the following measures:

- Reorient or relocate the receiving antenna.
- Increase the separation between the equipment and receiver.
- Connect the equipment into an outlet on a circuit different from that to which the receiver is connected.

- Consult the dealer or an experienced radio/TV technician for help.

This equipment complies with FCC radiation exposure limits set forth for an uncontrolled environment. This equipment should be installed and operated with a minimum distance of 20cm between the radiator and any part of your body.

IC Certification:

IC: 25092-INNP2BMI1

This device contains license-exempt transmitter(s)/receiver(s) that comply with Innovation, S.)... ... and Economic Development Canada's license-exempt RSS(s). Operation is subject to the following two conditions

1. This device may not cause interference.
2. This device must accept any interference, including interference that may cause undesired operation of the device.

This equipment complies with IC RSS-102 radiation exposure limits set forth for an uncontrolled environment. This equipment should be installed and operated with a minimum distance of 20cm between the radiator and any part of your body.

This Class 8 digital apparatus complies with Canadian ICES-006. This digital apparatus does not exceed the Class 8 limits for radio-noise emissions from digital apparatus as set out in the Radio Interference Regulations of the Canadian Department of Communications

LIMITED WARRANTY:

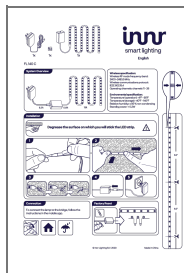
Inn(warrants that this device will be free from defects in material and workmanship and will operate for 2 years based on up to 3 hours average usage per day/7 days per week. when used as directed. If this device does not conform to the warranty. Innr will send you. at its election, a replacement device or refund your original purchase price upon receipt of the returned device. register receipt and proof of purchase. Please send an email to usaservice@innr.com to find out how to return the device. This limited warranty does not cover devices subject to accident, neglect, abuse, misuse or acts of God. REPLACEMENT OR REFUND IS YOUR SOLE REMEDY. EXCEPT TO THE EXTENT PROHIBITED BY APPLICABLE LAW. ANY IMPLIED WARRANTIES ARE LIMITED IN DURATION TO THE DURATION OF THIS WARRANTY. LIABILITY FOR INCIDENTAL OR CONSEQUENTIAL DAMAGES IS HEREBY EXPRESSLY EXCLUDED. Some states and provinces do not allow the exclusion of incidental or consequential damages, so the above limitation or exclusion may not apply to you. This warranty gives you specific legal rights, and you may also have other rights which vary from state to state and province to province.

CAUTIONS and OPERATING INSTRUCTIONS:

- Risk of electric shock — do not use when directly exposed to water.
- This device is not intended for use with emergency exit fixtures or emergency lights.
- Only install in operating environments between 0°F -100°F / -20°C – +40°C.
- Before replacing, turn off the power and let the device cool down to avoid burning.
- The device is for indoor use only.
- Do not immerse in water or use the device in wet locations, e.g. bathrooms or outdoors.
- For cleaning, use a damp cloth, never a strong cleaning agent.
- Do not disassemble the product; if any part is damaged, the product should not be used.
- Do not clean the device when it is on and connected to the power supply.
- This device is not a toy, designed to be played with by children.
- Do not place this device on hot surfaces.
- For safety reasons, do not open this device, which will also void the warranty.

- Use the device only in a socket rated for this device.
- Dispose of this device in accordance with disposal laws in your area.

Documents / Resources



[innr FL140C Smart Flex Light](#) [pdf] User Guide
FL140C, Smart Flex Light

Manuals+.