

Innovative Sensor Technology HYT 271 Humidity Sensor Module User Guide

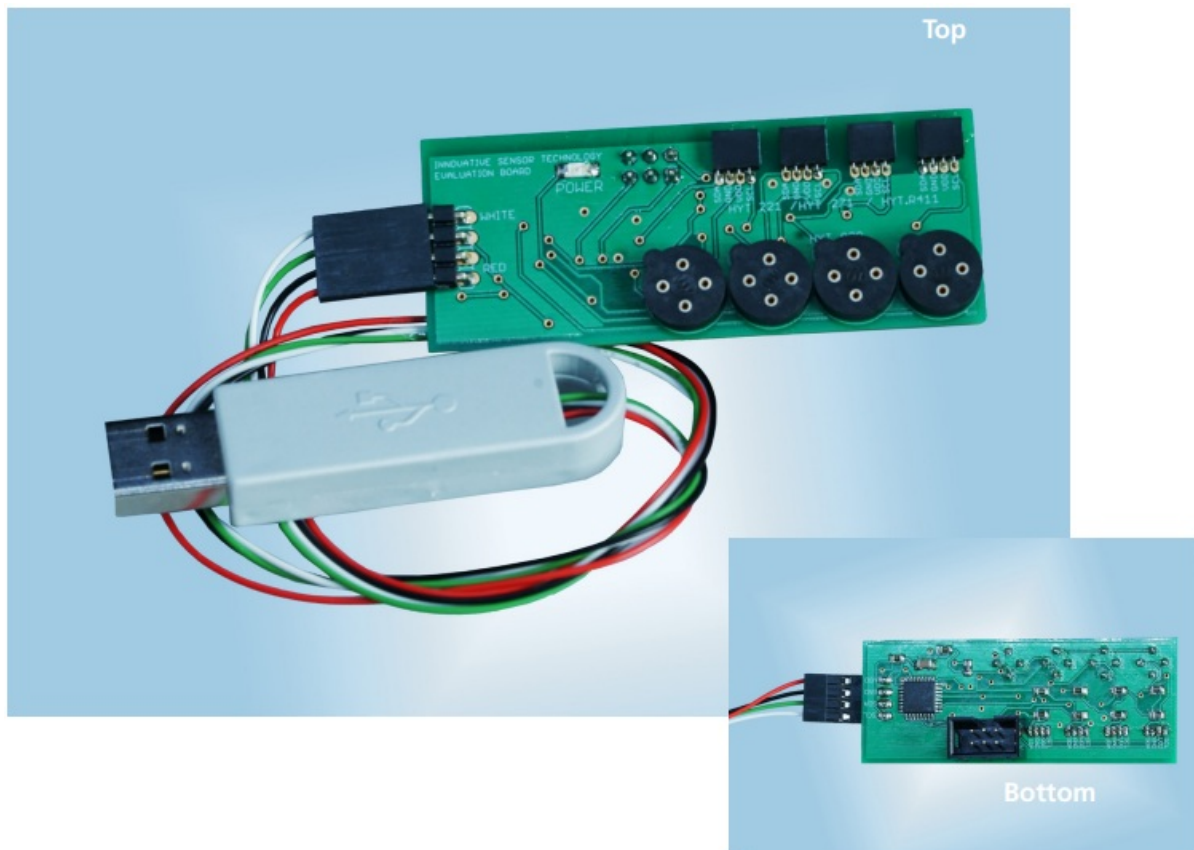
[Home](#) » [Innovative Sensor Technology](#) » Innovative Sensor Technology HYT 271 Humidity Sensor Module User Guide 

Contents

- [1 Innovative Sensor Technology HYT 271 Humidity Sensor Module](#)
- [2 Specifications](#)
- [3 Product Usage Instructions](#)
- [4 Signal Transmission](#)
- [5 Evaluation board connections](#)
- [6 Compatibility](#)
- [7 Power supply and outputs](#)
- [8 Software installation](#)
- [9 Assembly of sensors](#)
- [10 Using the software](#)
- [11 Flashing the firmware](#)
- [12 FAQ](#)
- [13 Documents / Resources](#)
 - [13.1 References](#)
- [14 Related Posts](#)



Innovative Sensor Technology HYT 271 Humidity Sensor Module



Specifications

- **Product:** 4-Channel Evaluation board for digital humidity modules
- **Compatible Modules:** HYT 271, HYT 221, HYT 939
- **Connections:** Up to 4 modules simultaneously
- **Power Supply:** USB cable or DC power source (5V, 4-15V DC)
- **Operating Systems:** Windows 7/8/8.1/10/11

Product Usage Instructions

Evaluation Board Connections

The board allows the connection of up to 4 sensors simultaneously, with specific connectors for each module type. Connect the USB Dongle to the Evaluation Board following the WHITE and RED color markings. Then connect the USB Dongle to your PC.

Compatibility

The evaluation board is compatible with all IST AG humidity modules of the HYT family including HYT 271, HYT 221, and HYT 939.

Power Supply and Outputs

The transmitter can be powered via a USB cable from a PC or a DC power source (5V, 4-15V DC). Refer to schematics for connector positions.

Signal Transmission

Analog Output: The analog voltage signals transmitted are directly proportional to the measured parameters (Relative humidity and Temperature).

Software Installation

Compatible with Windows operating systems. Ensure the iowkit.dll file is in the same directory as the executable file for proper software functioning.

Assembly of Sensors

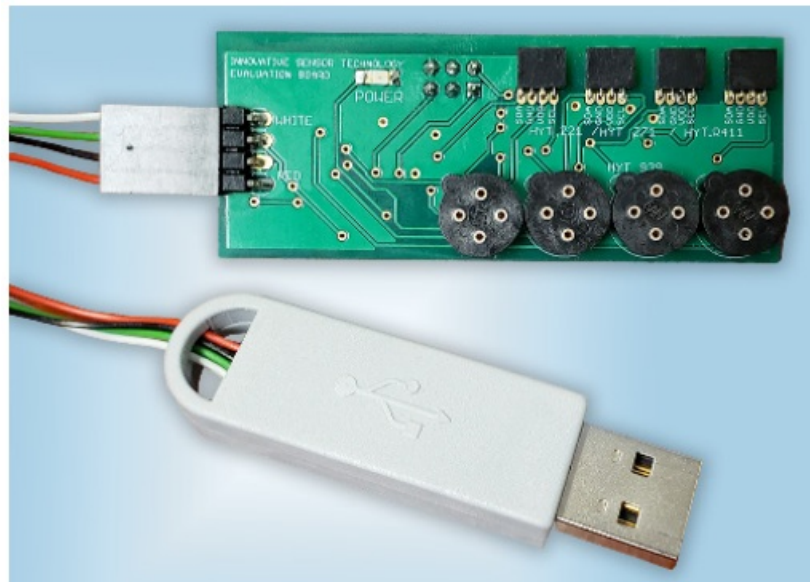
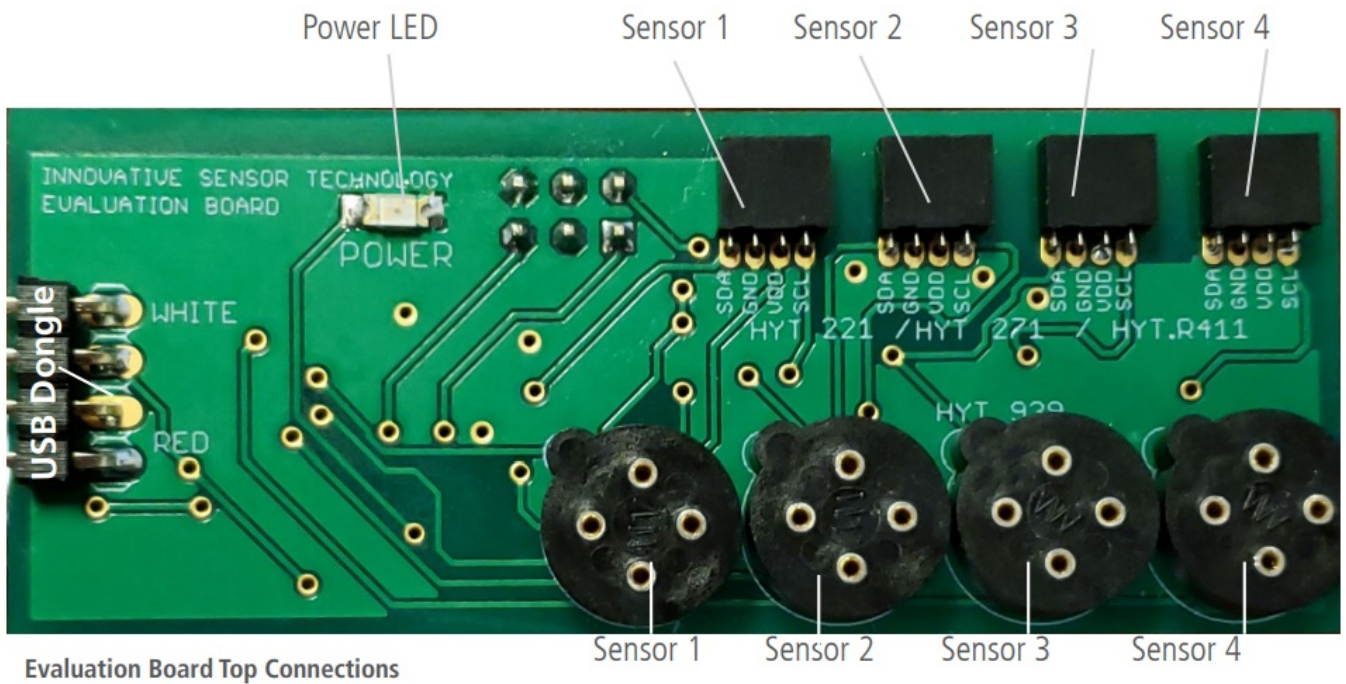
Each sensor occupies a shared slot on the board. Ensure proper matching of sensor type with connector shape. Assemble sensors according to their shape and connector type.

The purpose of this evaluation board is to facilitate the evaluation of HYT sensor modules for humidity and temperature. The evaluation board enables to connect up to 4 HYT modules simultaneously.

Evaluation board connections



- Though the humidity evaluation board has 8 connectors, a maximum of 4 sensors can be used at a time (See Section 4 for details).
- The square-shaped connectors are for HYT 221, HYT 271, and HYTR411 modules. The round connectors are for HYT 939 modules. The pinning of each sensor is displayed on the board.
- To power the board, connect the USB Dongle to the Evaluation Board according to the “WHITE” and “RED” color markings. Then connect the USB Dongle to your PC.

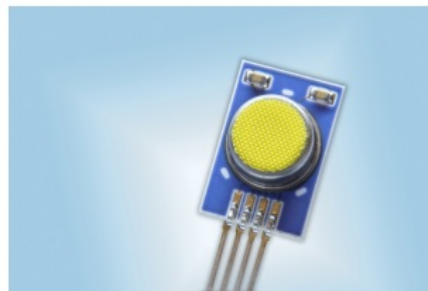


Compatibility

The evaluation board is compatible with all IST AG humidity modules of the HYT family



HYT 271



HYT 221



HYT 939

Power supply and outputs

The transmitter can be powered via a USB cable from a PC or a DC power source. Please refer to Schematics (1.1) for the position of the corresponding connectors.

Power supply requirements

USB	5 V
DC power source	4 to 15 V DC (ca. 50 to 300 mA)

Pin assignment of J1 connector:

Uh	Rel. Humidity, analog output 0-10V
GND	Ground
+U	Power supply PCB, input 4-15V DC
Ut	Temperature, analog output 0-10V

Signal transmission

Analog output

- The analog voltage signals transmitted are directly proportional to the measured parameters.
- The following measuring and signal ranges represent the default HYT calibration:

Parameter	Output	Minimum	Maximum
Relative humidity	Uh	0% RH .. 0V	100% RH .. 10 V
Temperature	Ut	- 40 °C .. 0V	+125 °C .. 10 V


Software installation


Operating System: Windows, 7, Windows 8/8.1, Windows 10, Windows 11.

The executable file is dependent on the iowkit.dll file. To run the software, it is important that the iowkit.dll file is in the same directory as the executable file.

Name

DLL file and executable file in the same directory.

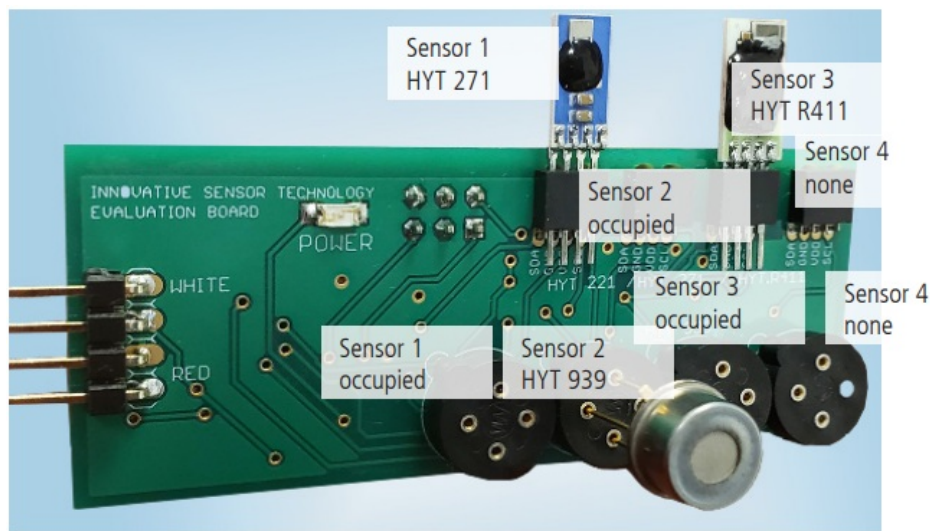
 iowkit.dll

 Visual HYT.exe

Assembly of sensors

Only one sensor can occupy a shared sensor slot (Ex: the Square connector of “Sensor 1” has a HYT271 connected, so the round connector of “Sensor 1” is considered occupied). When assembling the HYT 939, make sure the shape of the sensor housing nose also matches the shape of the circle-shaped connector. Assemble the flat chip sensors into the square connectors facing up.

See example of assembling the sensors on the Evaluation Board below



Assembled sensors on the Evaluation Board. Occupied slots cannot be used.

Using the software

Steps to read sensor data:

1. Click "Scan I2C Bus" under the Interface section to ensure that the Evaluation Board can be found by the software.
2. On the settings section, select the appropriate sensor settings that correspond to how you have assembled the sensors on the Evaluation Board. Change the cycle time if needed. To apply the settings, click "Write". To read the previously applied settings, click "Read".

Note: When using HYT 221/271/R411, select sensor type "HYT271".

3. To begin reading the sensor data, click "Read" located under the Interface section. To stop the reading, click "Stop Read".

Changing Address Module

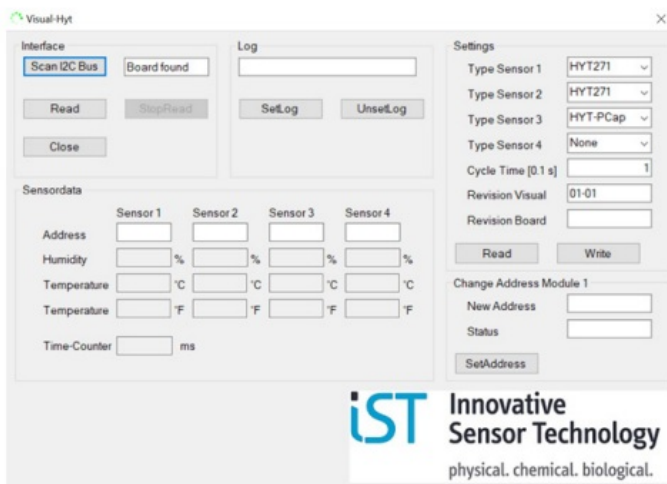
1. Assemble the sensor that you desire to change the address in Sensor slot #1.
2. Under the "Change Address" section, type the new decimal address in the "New Address" box.
3. Finally, click "Set Address" to set the new desired address.

Hexadecimal	Decimal
0x23	35
0x24	36
0x25	37
0x26	38
0x27	39
0x28	40
0x29	41
0x2A	42
0x2B	43
0x2C	44
0x2D	45

Simple Hexadecimal to Decimal conversion chart for quick reference.

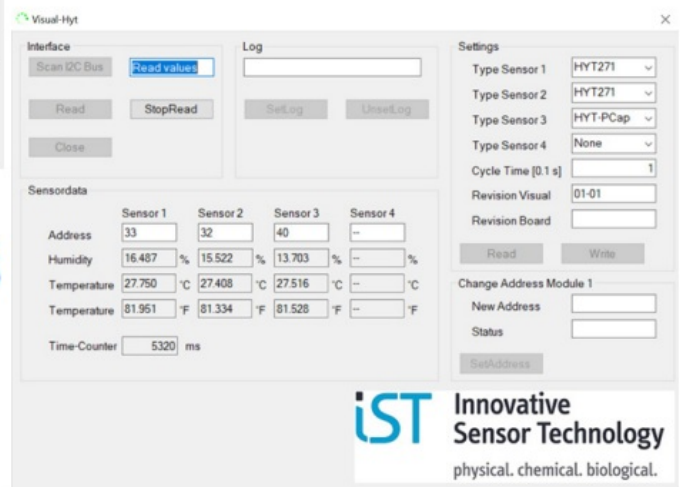
Data Acquisition / Logging:

1. Under the Log section, click “Set Log”.
2. Browse the directory in which the log file is to be saved.
3. Logging should begin upon reading the sensor data. To stop the software from logging further data, click “Unset Log”.



Sensor settings that correspond with Fig 4. sensor assembly configuration

Reading the sensor's data (address, humidity, temperature)

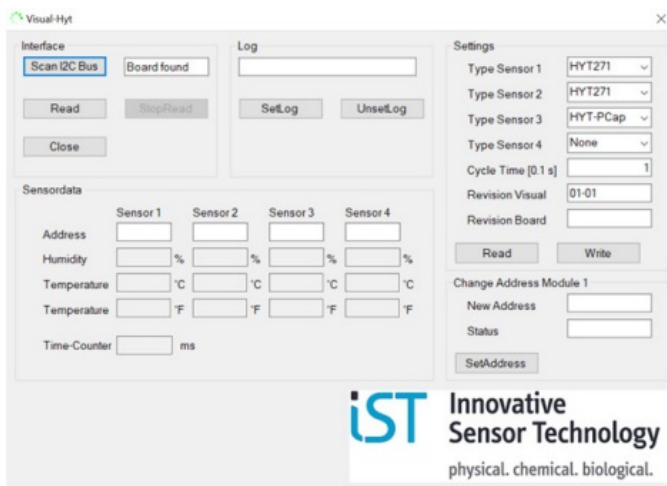


Flashing the firmware

- Software «Microchip Studio»: <https://www.microchip.com/en-us/tools-resources/develop/microchip-studio>
- Programmer «USB AVRISP XP II»: <https://www.waveshare.com/usb-avrisp-xpii.htm>

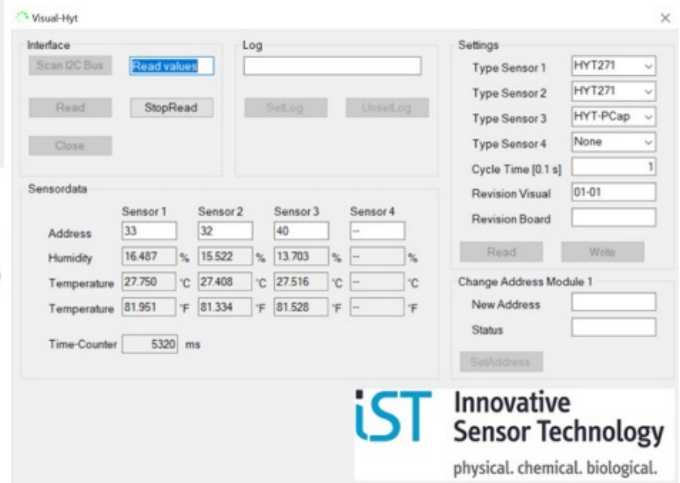
To successfully flash the firmware, the Evaluation Board must be powered on and have a connection to the programmer.

Power the Evaluation Board on by connecting it to the PC via the USB Dongle.

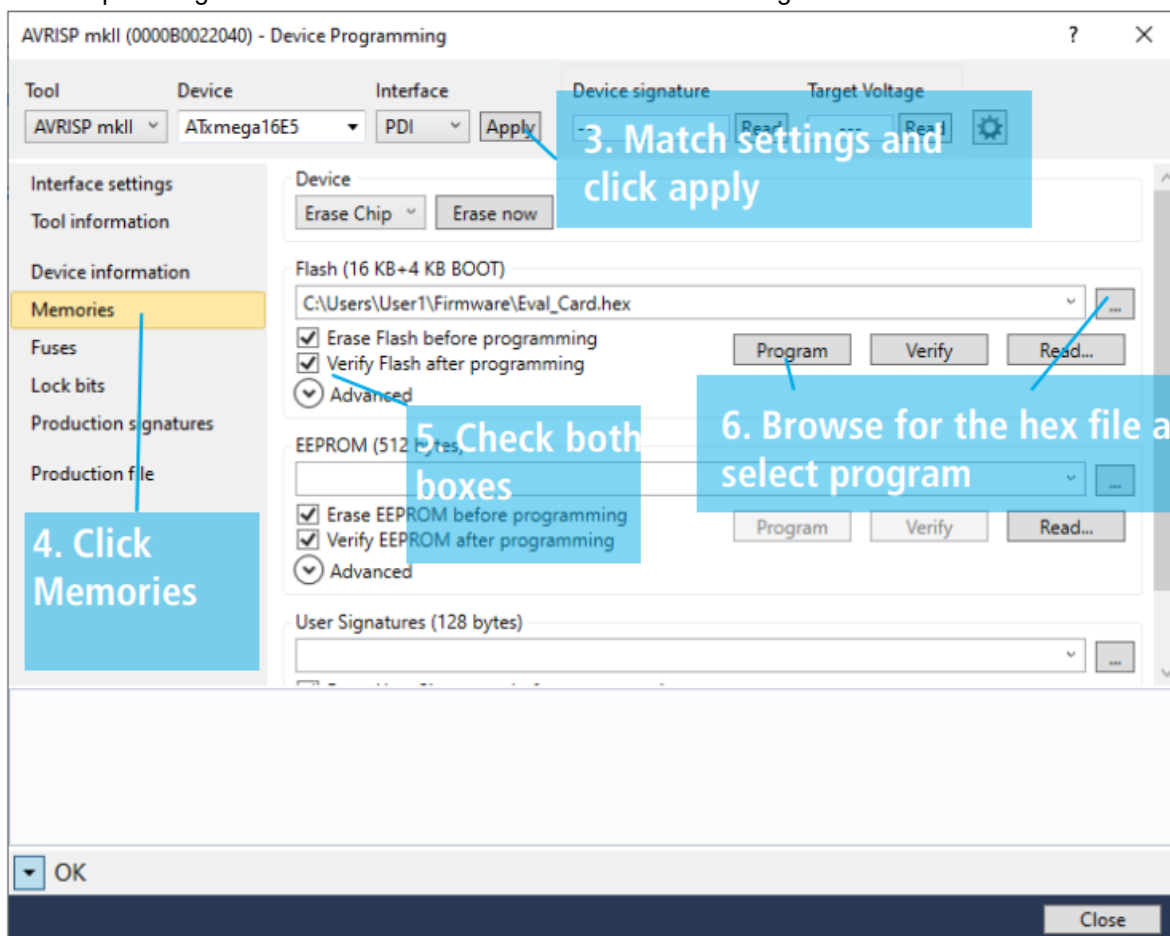


Sensor settings that correspond with Fig 4. sensor assembly configuration

Reading the sensor's data (address, humidity, temperature)



Please see pin assignment above. The recommended maximum length of the extension cable is 30 cm.



FAQ

- **Q: How many sensors can be connected at once?**
 - A: Up to 4 sensors can be connected simultaneously on the evaluation board.

- **Q: What power supply options are available?**

- A: The board can be powered via a USB cable from a PC or a DC power source with a range of 5V to 15V DC.


CONTACT

- **ADDRESS:** Innovative Sensor Technology IST AG, Stegrütistrasse 14, 9642 Ebnat-Kappel, Switzerland
- **Phone:** +41 71 992 01 00
- **Fax:** +41 71 992 01 99
- **Email:** info@ist-ag.com
- www.ist-ag.com

All mechanical dimensions are valid at 25 °C ambient temperature if not differently indicated

- All data except the mechanical dimensions only have information purposes and are not to be understood as assured characteristics.
 - Technical changes without previous announcements as well as mistakes reserved.
 - Loading with extreme values during a longer period can affect the reliability.
 - The material contained herein may not be reproduced, adapted, merged, translated, stored, or used without the prior written consent of the copyright owner.
 - Product specifications are subject to change without notice.
 - All rights reserved.
-

Documents / Resources

	<p>Innovative Sensor Technology HYT 271 Humidity Sensor Module [pdf] User Guide HYT 271 Humidity Sensor Module, HYT 271, Humidity Sensor Module, Sensor Module</p>
---	--

References

-  [Greeting Cards, Ecards & More | American Greetings](#)
-  [AVR ISP ATmega64 ATmega128 ATmega1280 ATmega1281](#)
- [User Manual](#)

[Manuals+](#), [Privacy Policy](#)

This website is an independent publication and is neither affiliated with nor endorsed by any of the trademark owners. The "Bluetooth®" word mark and logos are registered trademarks owned by Bluetooth SIG, Inc. The "Wi-Fi®" word mark and logos are registered trademarks owned by the Wi-Fi Alliance. Any use of these marks on this website does not imply any affiliation with or endorsement.