



Innovative Design Works PTS-04-UNIV Universal Payment Terminal Stand Installation Guide

[Home](#) » [Innovative Design Works](#) » Innovative Design Works PTS-04-UNIV Universal Payment Terminal Stand Installation Guide 

innovative_™
design works

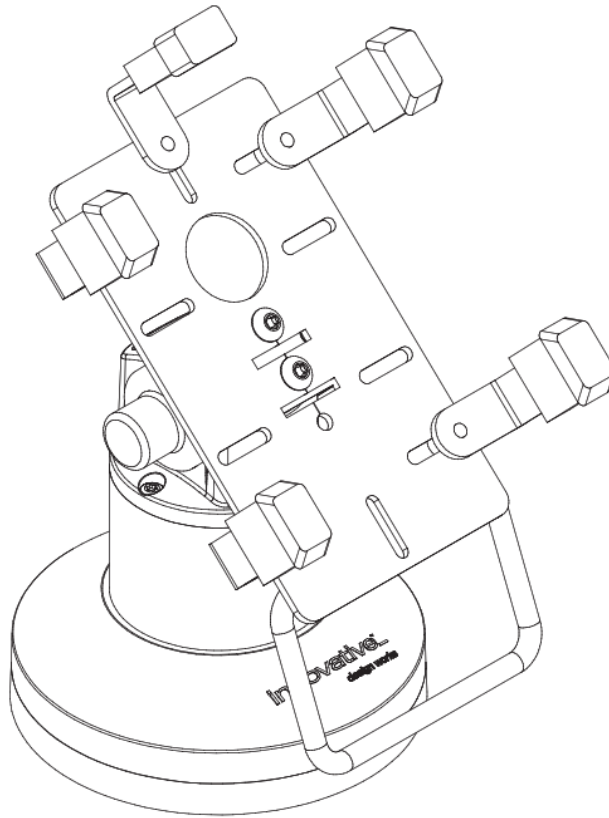


innovative_™
design works

PTS-04-UNIV

Installation Instructions

Innovative Ergonomic Solutions companies



© 2021 Innovative Ergonomic Solutions REV A

Contents

- [1 PTS-04-UNIV Universal Payment Terminal Stand](#)
- [2 ROTATION](#)
- [3 Documents / Resources](#)
 - [3.1 References](#)
- [4 Related Posts](#)

PTS-04-UNIV Universal Payment Terminal Stand

A

T20 L-Key 1x
714997

B

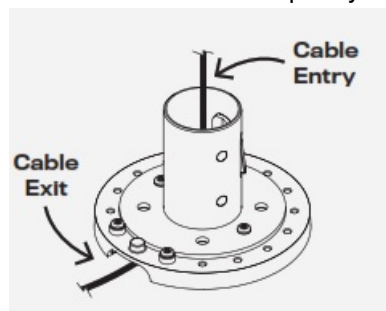
T25 L-Key 1x
714899

C

4mm Hex Key 1x
709877

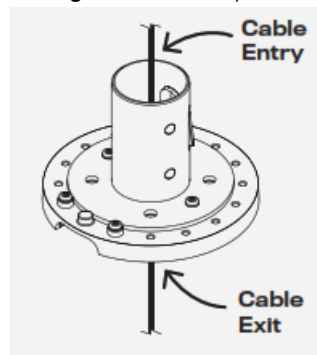
IMPORTANT: Determine cable routing prior to installing the mount. This will ensure the mount is installed in the correct orientation for your installation.

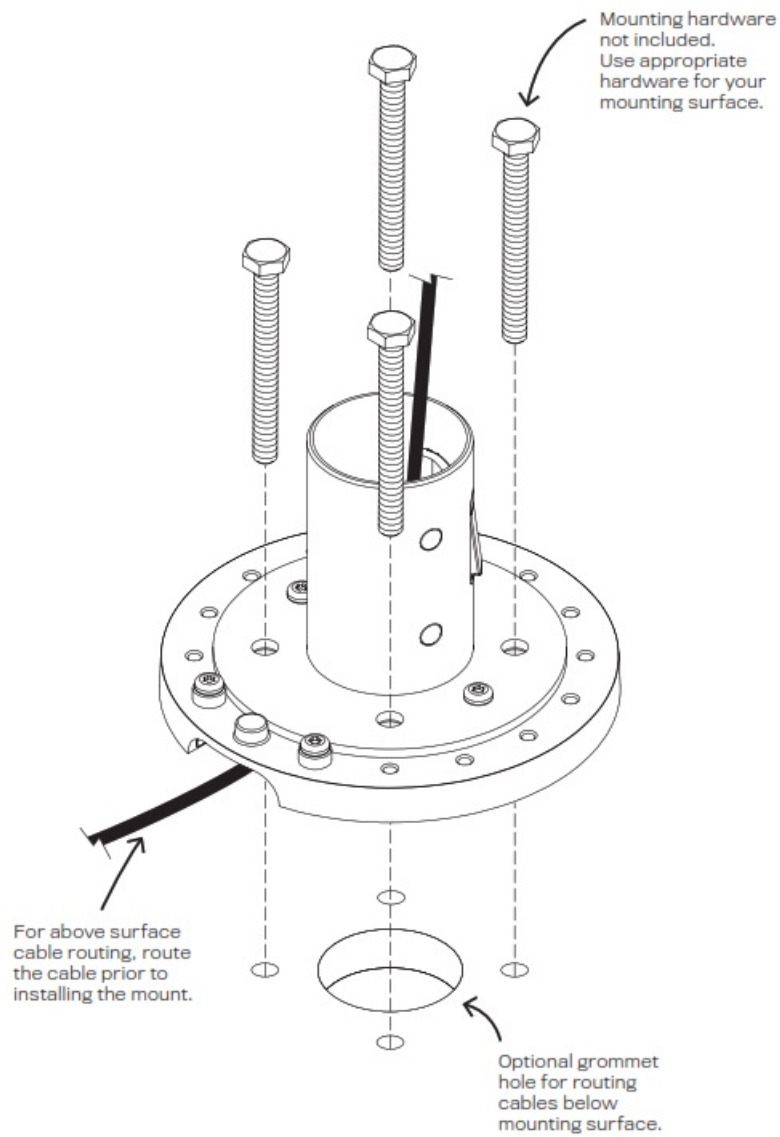
Above Surface, Cable Routing Locate the mount cable exit and plan your installation accordingly.



Below Surface Cable Routing

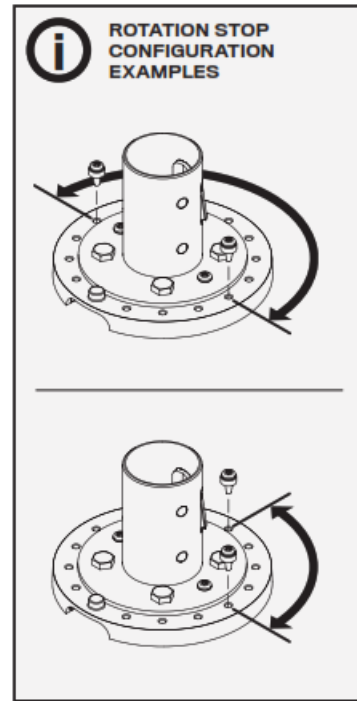
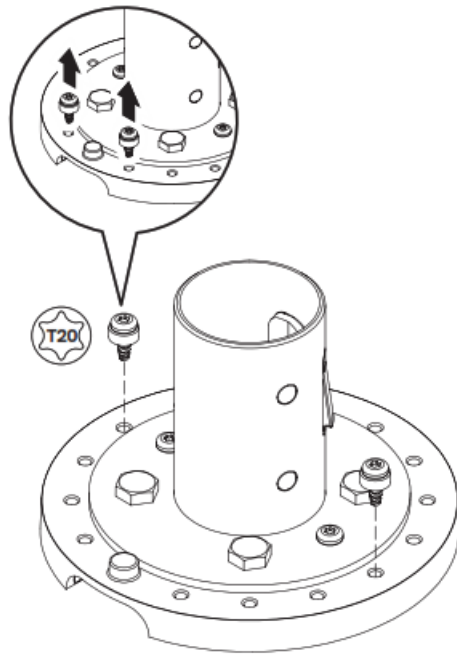
Cables may pass through the mount (requires a grommet hole).





ROTATION

The placement of the two rotation stop screws in the outer ring determines the amount of payment terminal rotation. You can remove the screws from their original location and place them in any of the holes in the outer ring to allow for the amount of desired rotation.

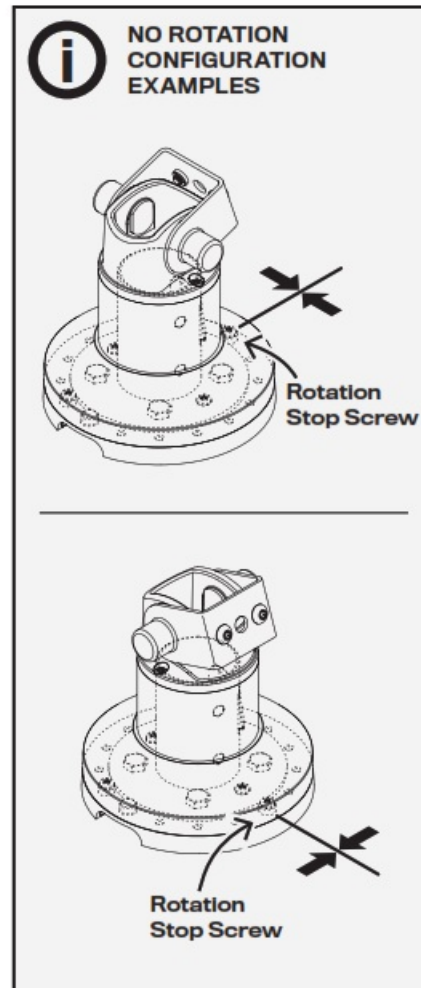
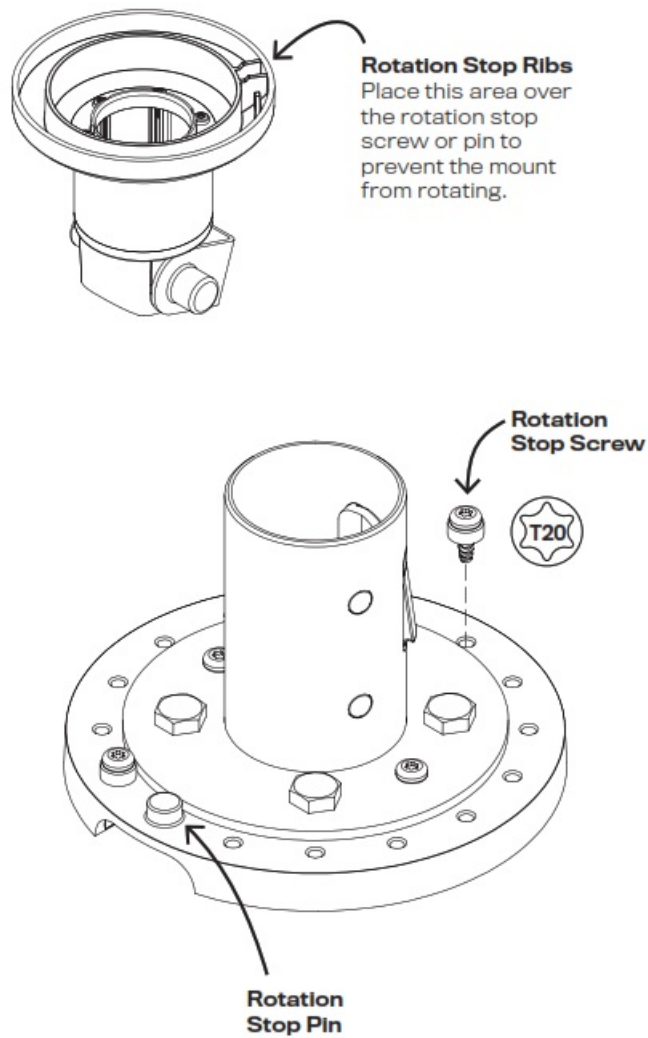


OR

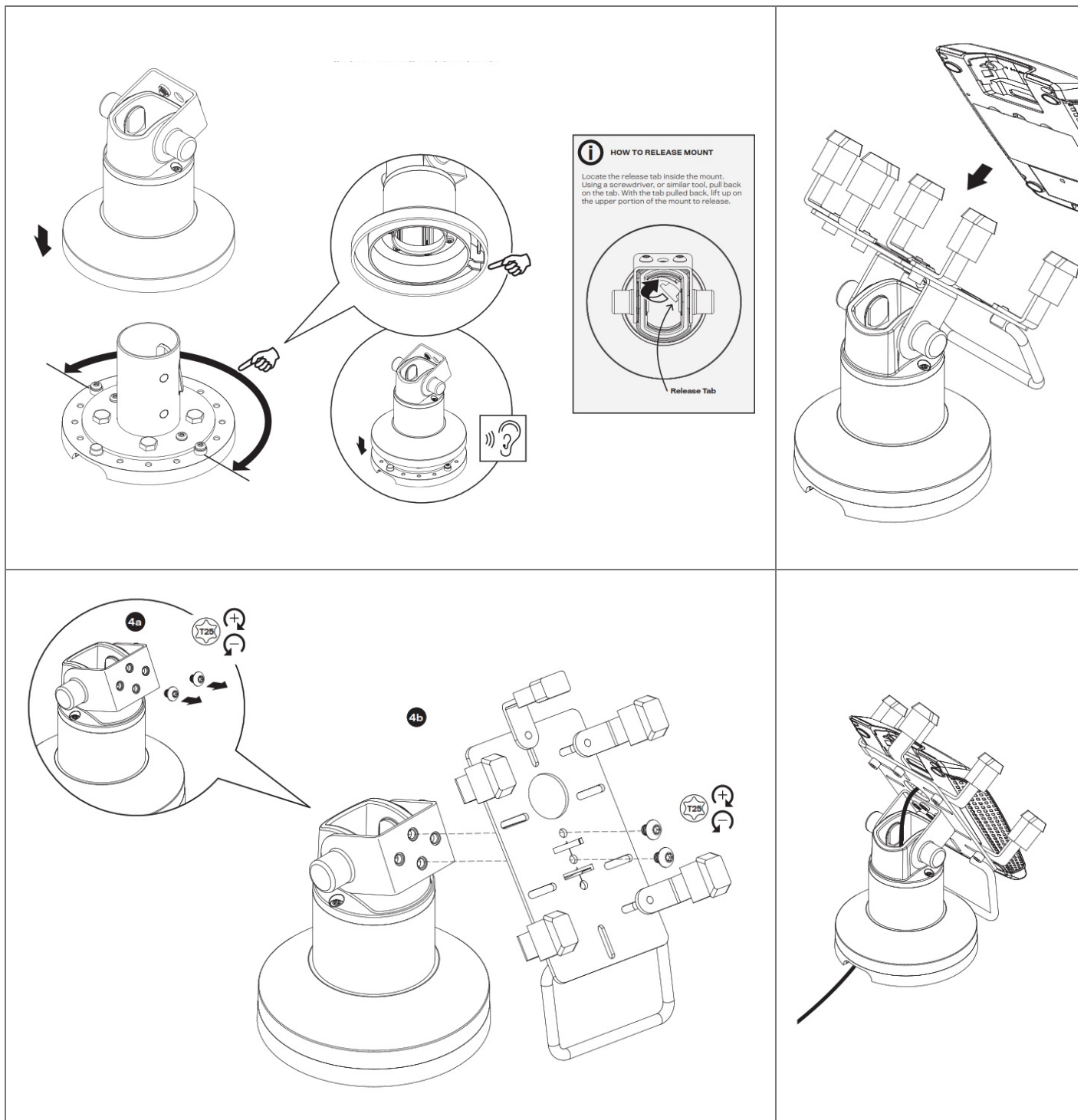
NO ROTATION

There are rotation stop ribs underneath the top portion of the amount that can be placed directly over the rotation stop screw or pin.

This positioning will prevent the payment terminal from rotating. Determine the proper rotation stop screw location for your installation.



3. When placing the top of the mount onto the base, ensure the rotation stop ribs fall in between the rotation stops that were set in place in Step 2. Or in a no-rotation configuration, the ribs must be placed over top the rotation stop screw or pin.



Innovative Ergonomic Solutions

800 524 2744

customerservice@team-ies.com

team-ies.com

Documents / Resources

	<p>Innovative Design Works PTS-04-UNIV Universal Payment Terminal Stand [pdf] Installation Guide</p> <p>PTS-04-UNIV Universal Payment Terminal Stand, PTS-04-UNIV, Universal Payment Terminal Stand, Payment Terminal Stand, Terminal Stand</p>
--	--

References

-  [IES Holdings](#)
-  [Home - Human Active Technology](#)

Manuals+.