



**inner range IR
VIDEO
Panoramic
Bullet Camera**



inner range IR VIDEO Panoramic Bullet Camera User Guide

[Home](#) » [inner range](#) » inner range IR VIDEO Panoramic Bullet Camera User Guide 

Contents

- [1 inner range IR VIDEO Panoramic Bullet Camera](#)
- [2 Specifications](#)
- [3 FAQ](#)
- [4 Packing List](#)
- [5 Device Port](#)
- [6 Device Dimension](#)
- [7 Reset and Install SD Card](#)
- [8 Device Installation](#)
- [9 Network Setup / Device Activation](#)
- [10 Network Setup / Device Activation](#)
- [11 Important Information](#)
- [12 Installation and Usage Precautions](#)
- [13 Documents / Resources](#)
 - [13.1 References](#)
- [14 Related Posts](#)



inner range IR VIDEO Panoramic Bullet Camera



Specifications

- Device Type: Panoramic Bullet Camera
- Port: Device Port
- Dimensions: 227.7mm x 128.5mm x 74mm
- Power: External power source required
- Accessories: Hexagonal Alan Key wrench, Waterproof grommet, Mounting template, Screws, Wall anchors, Terminal block

FAQ

Q: Can the camera be powered by the NVR/Switch?

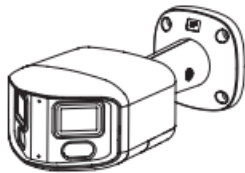
A: No, all external devices should be powered separately. The camera does not receive power voltage from external sources.

Q: How do I activate the camera with a Gateway?

A: Follow the instructions provided in the user manual for activating the camera with your Inner Range Gateway (NVR).

Packing List

Accessories can vary from region to region. Please refer to the actual product.



1 x Hexagonal
Alan Key wrench



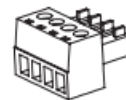
1 x Waterproof
grommet for network
access port



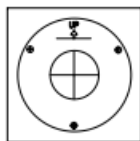
4 x Stainless steel
self-tapping screws



4 x Plastic wall
anchors



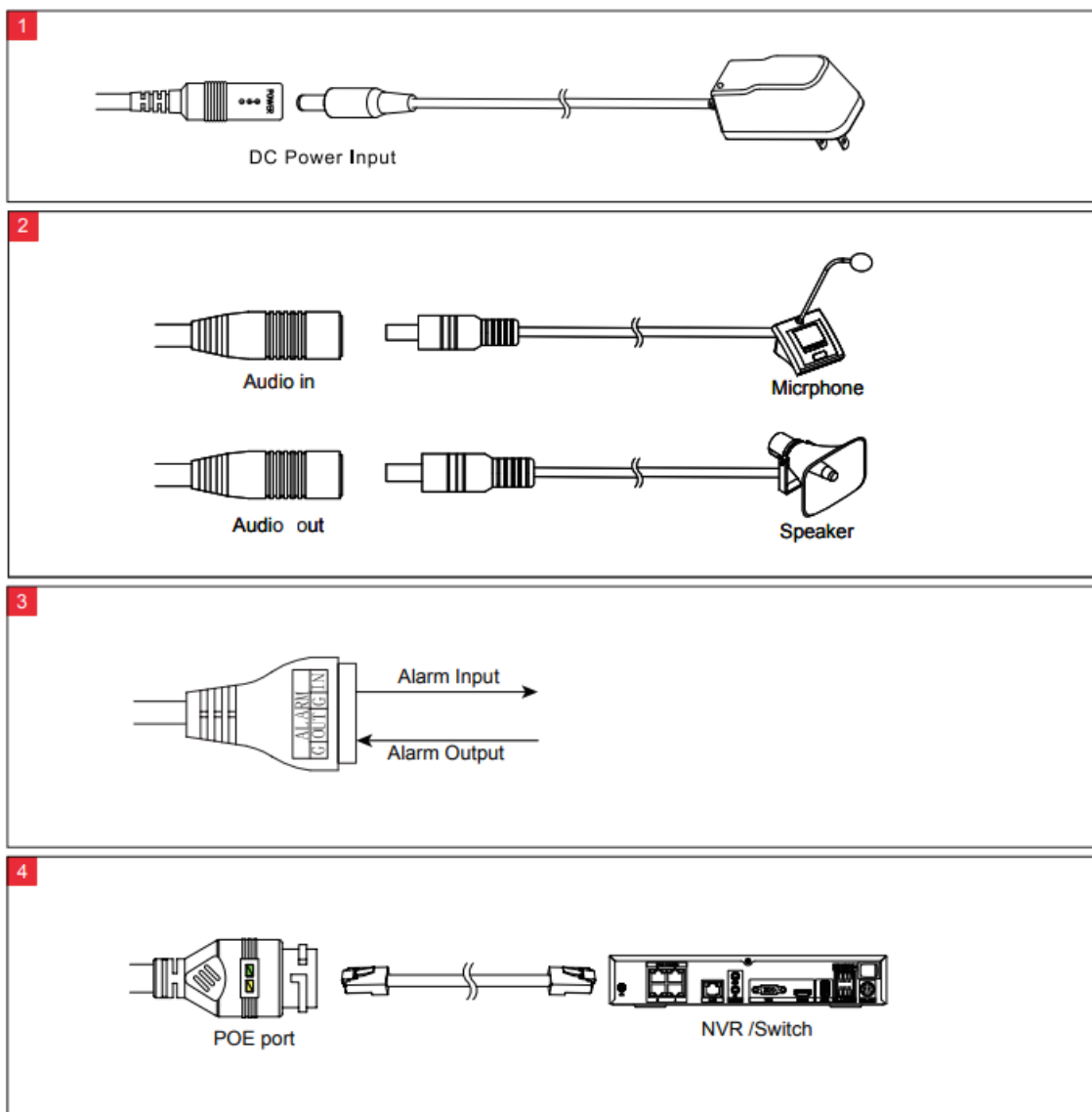
1 x Terminal
block



1 x Mounting template

Device Port

NOTE: Different devices may have different multi-core cables; The figure is only for your reference, please refer to the actual application scene.

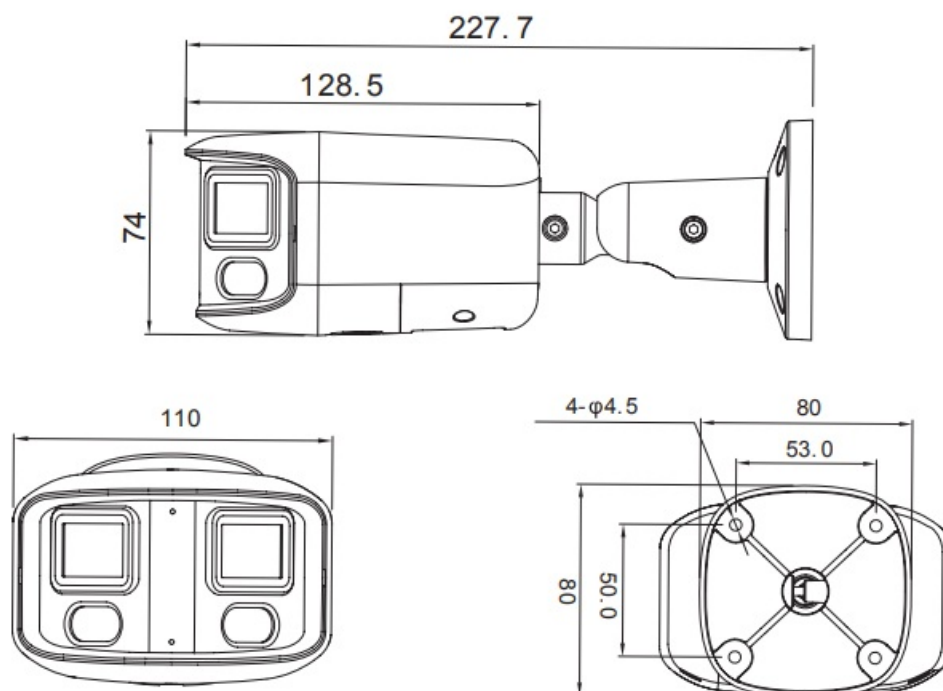


NOTE: All external devices should be powered separately. There is no power voltage from the camera.

Device Dimension

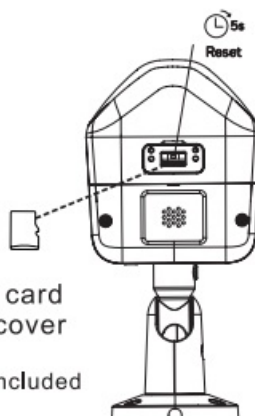
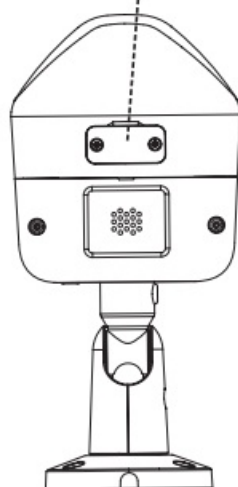
NOTE: Bullet cameras have varying overall dimensions, please check the product data sheet for accuracy.

Unit : mm



Reset and Install SD Card

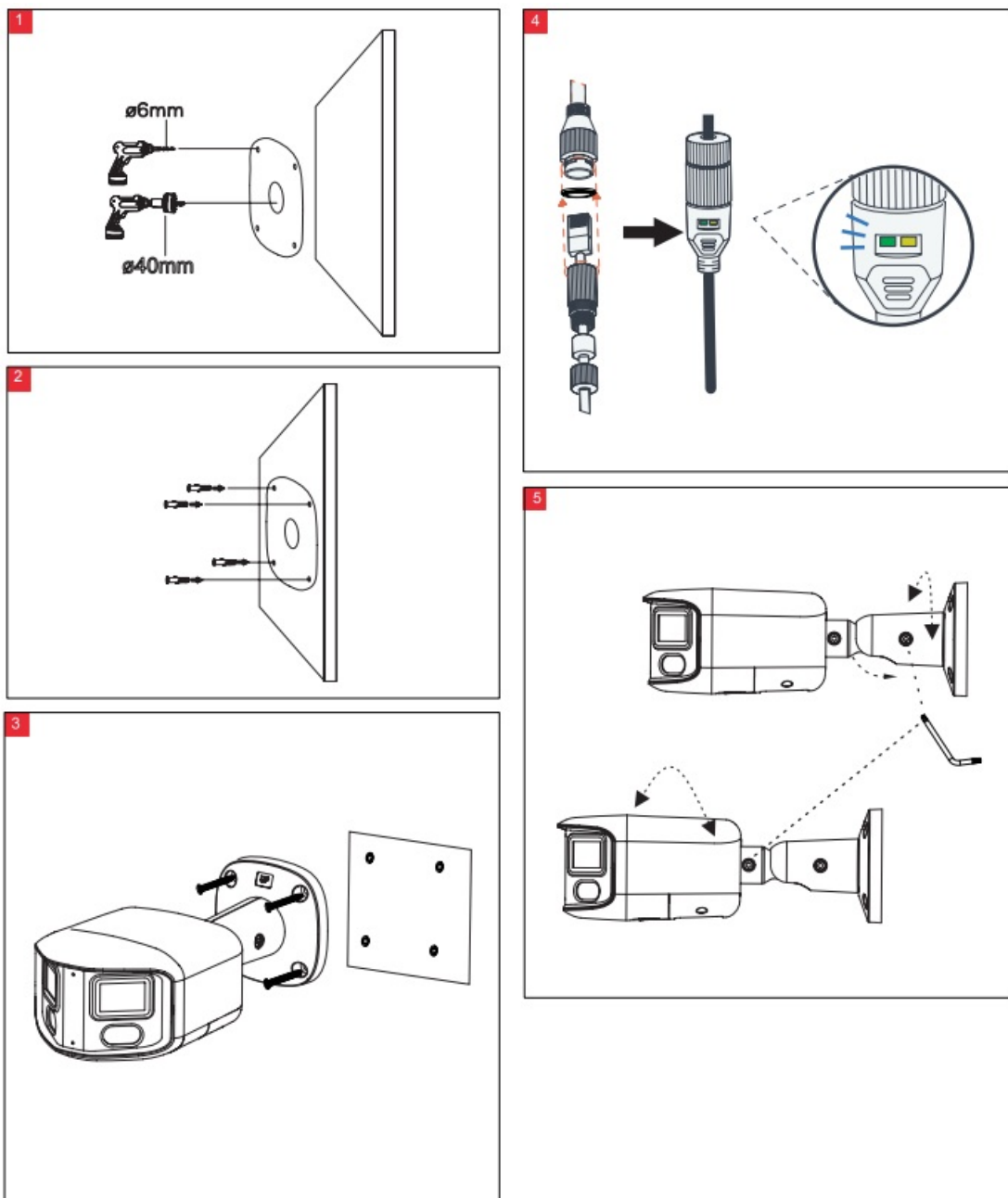
Remove the screws
open the cover



Insert SD card
Lock the cover

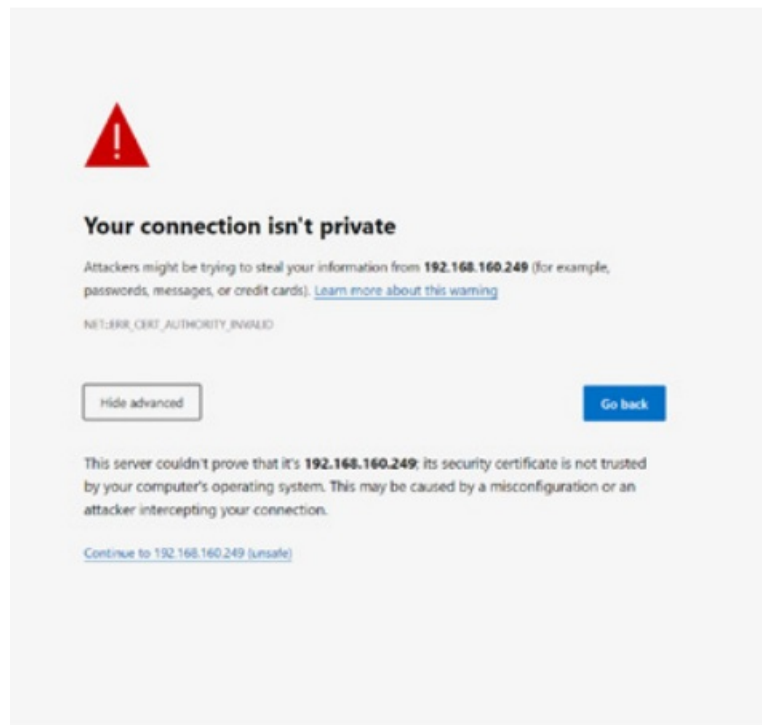
Micro SD card is not included

Device Installation



Network Setup / Device Activation

1. Connect to the IP address from your web browser.
2. For security, HTTPS is turned on by default, you may see a warning telling you the site is insecure ... this is because the self-signed certificate built into the camera is not "trusted" by your computer.
This is not an issue in this case, all data sent between your computer and the camera is safely encrypted and it is safe to proceed.



3. You will then be prompted to create a new admin password and can then use that password to log-in and configure your camera.

Two side-by-side screenshots of a web interface. The left screenshot shows a "Please Create Password" screen. It has a red "ir" logo at the top. Below it, there's a language selector set to "English". The form includes a "User Name" field with "admin" entered, a "New Password" field with a red border and a "help" icon, and a "Confirm" field. A red "Create" button is at the bottom. The right screenshot shows a login screen. It also has the red "ir" logo and a language selector set to "English". The form has a "Please Input Username" field and a "Please Input Password" field with a "help" icon. A red "Login" button is at the bottom.

Network Setup / Device Activation

The camera can be either activated with your Inner Range Gateway (NVR) or directly from the built in web interface.

Activation with a Gateway

- Connect the Camera to one of the POE ports on the Gateway with a network cable.
- The Gateway will automatically discover and adopt the camera.
- Alternatively, you can connect the camera to the same network the Gateway is on and allow the Gateways built in search functionality to discover and adopt it. Please consult the Gateway documentation for further details.

Stand Alone Activation

- Connect the camera to your network, and power it (either by PoE or by the DC jack)
- Your camera is set to obtain an IP address automatically via DHCP.
- Discover the IP address that was assigned to your camera from either your network administration portal, or the “IR Video Search Tool” available in the downloads section of the Inner Range website (see QR Code on this guide).

Important Information

- Please read this guide thoroughly before using the device.
- Failure to use the product correctly may result in fire or injury.
- Improper use can lead to equipment damage, data loss, or poor performance. Always follow the recommended guidelines for installation and usage.
- Always use accessories provided with the camera. Ensure the voltage aligns with the device’s input requirements.

Installation and Usage Precautions

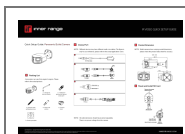
- Install according to the given guidelines to prevent damage.
- Use only power adapters compliant with local safety.
- If powered by PoE (power over ethernet) ensure the powering device has sufficient PoE budget to allow all devices to operate at their maximum rated power (see datasheet).

Quick Setup Guide – Copyright © Inner Range Pty Ltd October 2024

The specifications and descriptions of products and services contained in this document were correct at the time of release of this document. Inner Range Pty Ltd reserves the right to change specifications or withdraw products without notice. This document cannot be re-published or re-hosted without the prior written consent of Inner Range. For the latest version of this document, please visit the Inner Range website.

[INNERRANGE.COM](https://www.innerrange.com)

Documents / Resources



[inner range IR VIDEO Panoramic Bullet Camera](#) [pdf] User Guide
IR VIDEO Panoramic Bullet Camera, Panoramic Bullet Camera, Bullet Camera, Camera

References

- [User Manual](#)

[Manuals+](#), [Privacy Policy](#)

This website is an independent publication and is neither affiliated with nor endorsed by any of the trademark owners. The "Bluetooth®" word mark and logos are registered trademarks owned by Bluetooth SIG, Inc. The "Wi-Fi®" word mark and logos are registered trademarks owned by the Wi-Fi Alliance. Any use of these marks on this website does not imply any affiliation with or endorsement.