



Inner range IR-D-P1 Flexible Range Indoor Detector Instruction Manual

[Home](#) » [inner range](#) » Inner range IR-D-P1 Flexible Range Indoor Detector Instruction Manual 



inner range

**FLEXIBLE RANGE INDOOR DETECTOR
INSTALLATION INSTRUCTIONS
STANDARD
MODELS**



	Wide/Narrow area Flip lens	PIR
IR-D-P1	√	√

Contents

[1 Before installation](#)

[2 Installation](#)

[3 Settings](#)

[4 Checking](#)

[5 Other](#)



[6 Documents /
Resources](#)



[6.1 References](#)

[7 Related Posts](#)

Before installation

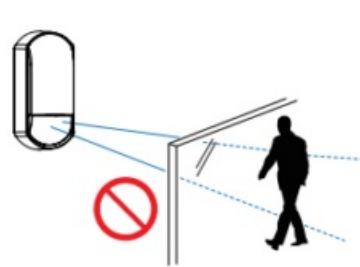
– Manufacturer's statement

Symbol	Meaning
 Warning	Failure to follow the instructions provided with this indication and improper handling may cause death or serious injury.
 Caution	Failure to follow the instructions provided with this indication and improper handling may cause injury and/or property damage.

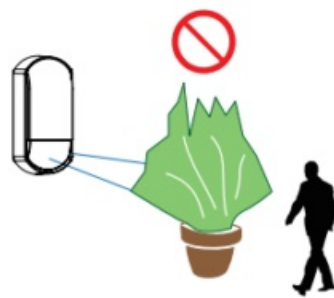
Symbol	Meaning
	Check mark indicates recommendation.
	Nix sign indicates prohibition.
NOTE	Special attention is required to the section of this symbol.



Warning



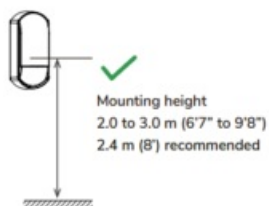
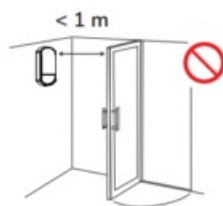
Detection through glass



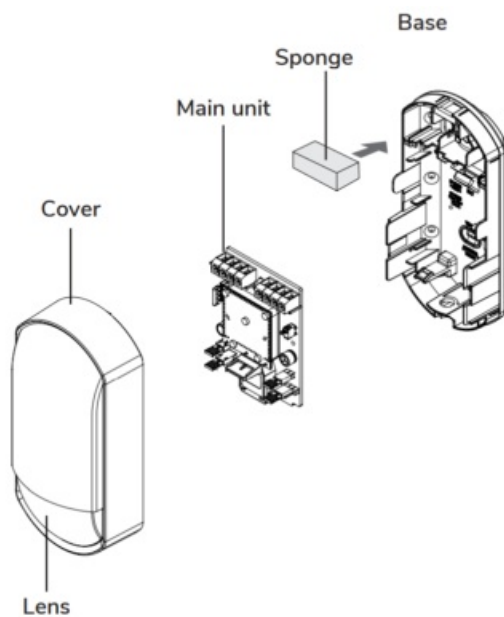
Partial/complete obstruction of the detection area.



⚠ Caution



– Parts identifications

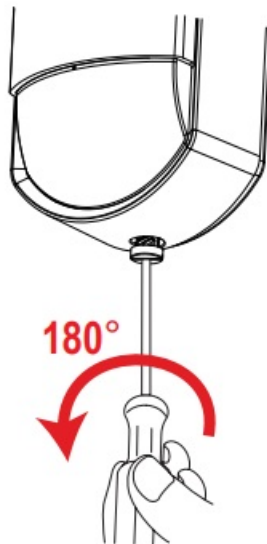


* Not certified to EN 50131-2-2/4

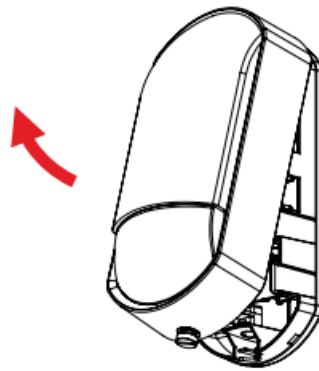
Installation

1-1. Disassemble

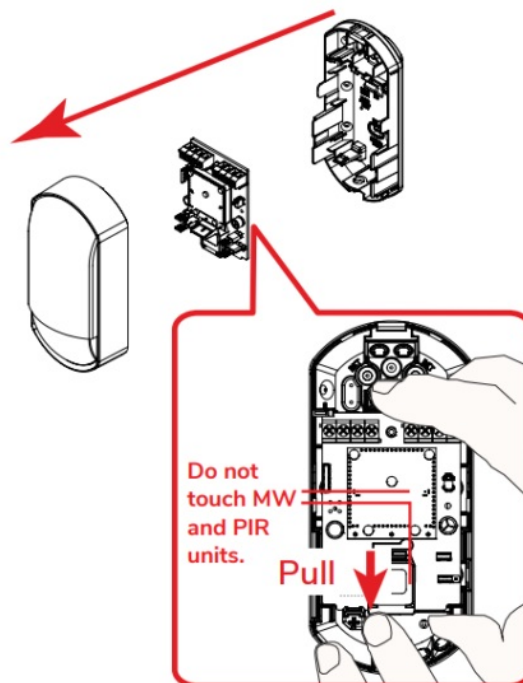
1. Unlock the cover



2. Open the cover

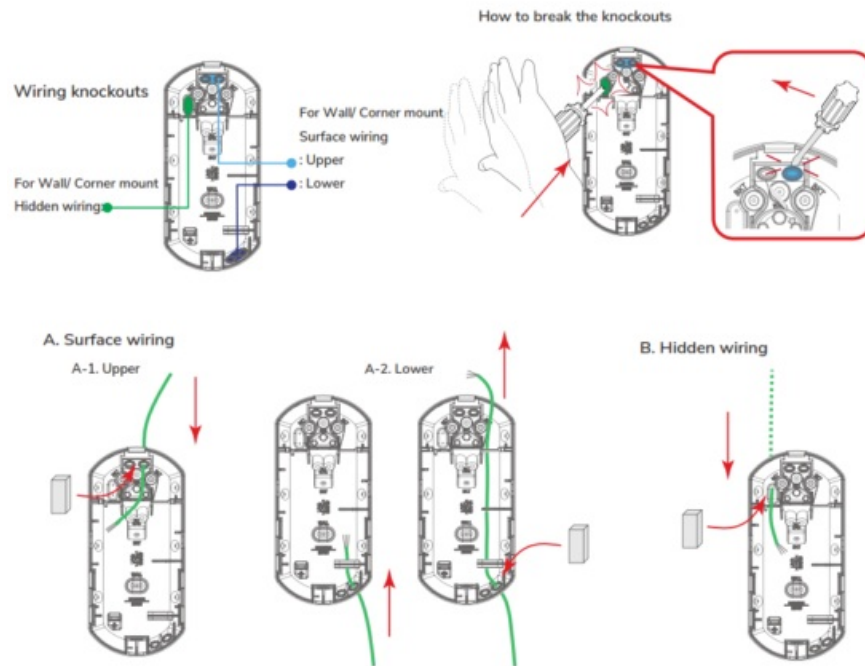


3. Remove the main unit

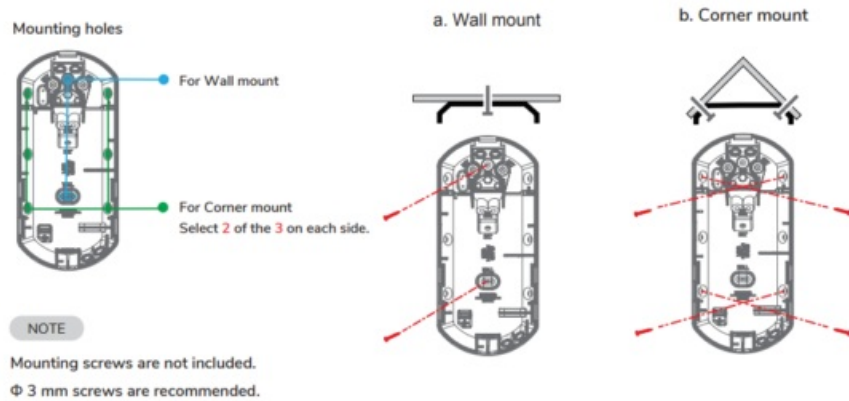


1-2. Wall mount without bracket

1. Wire through the base

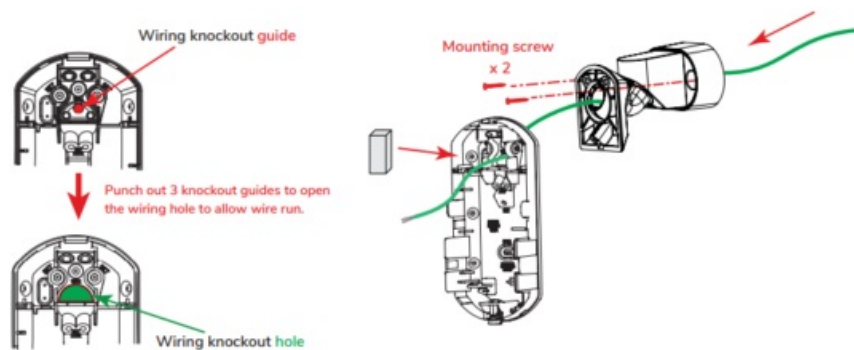


2. Mount the base



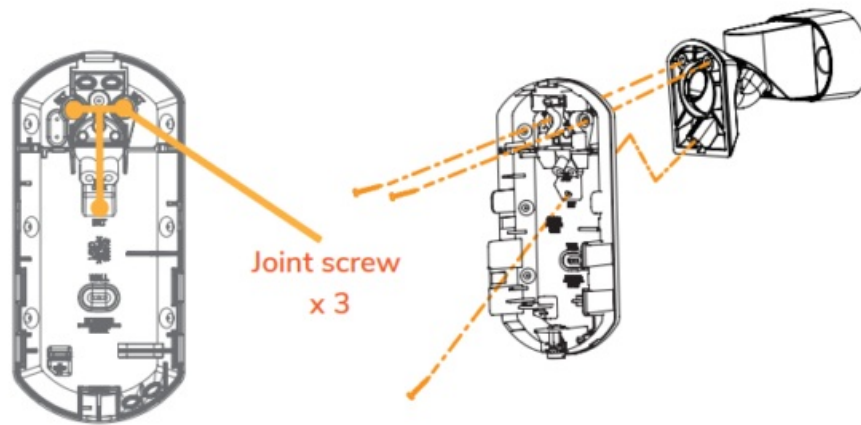
1-3. Wall mount with bracket

1. Wire and mount on the wall



NOTE :See page 4 for how to break the knockouts.

2. Join the base on the bracket

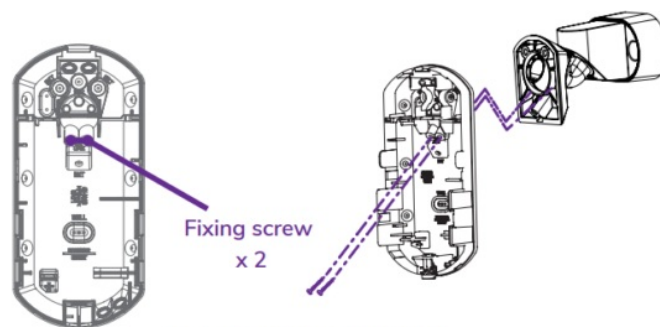


NOTE: Adjust the detection direction while jointing.

Confirming with a walk test is required.

→ Refer to “3-1. Walk test”

3. Fix the base with the fixing screws (optional)



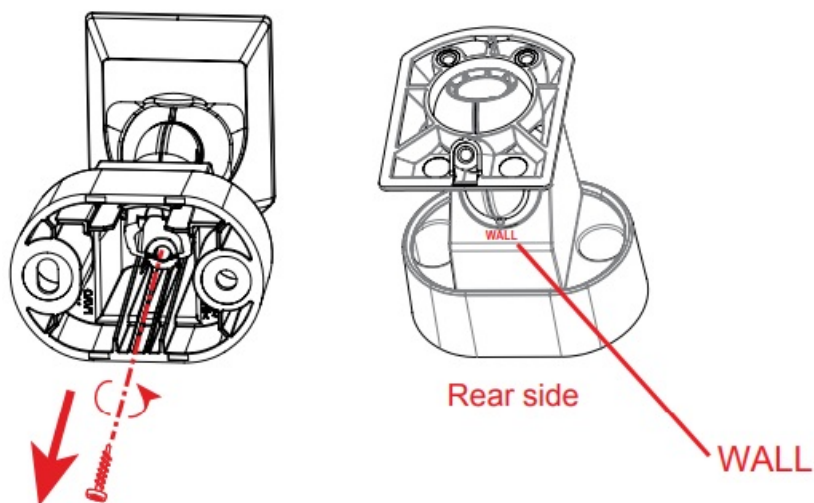
The bracket is basically jointed using 3 holes and 3 joint screws. Also use 2 additional fixing screws if stronger support is required.

NOTE 2 fixing screws are required for the Grade 2 and higher grade installation.

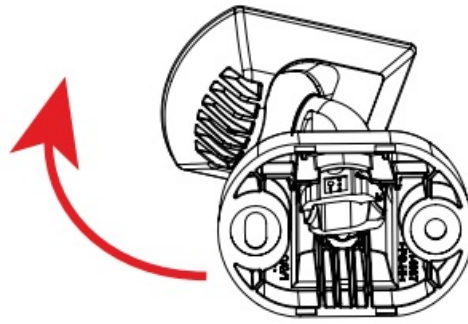
1-4. Ceiling mount with bracket

How to change the bracket to the ceiling mounting

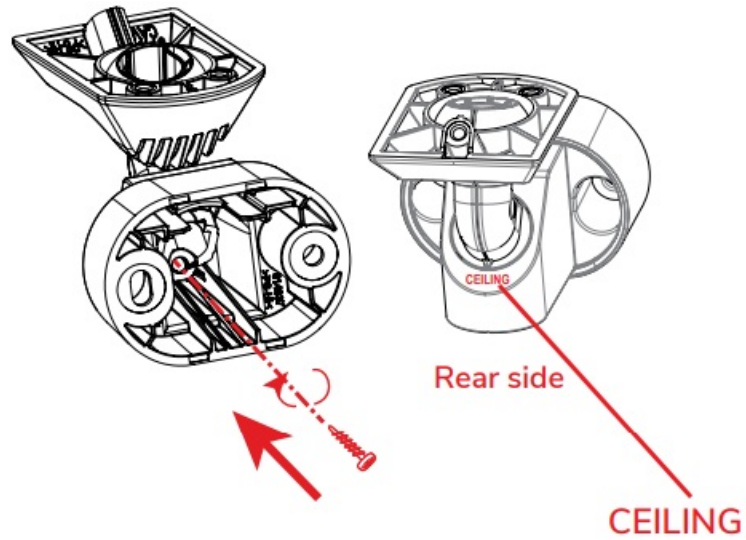
1. Loosen the fixing screw.



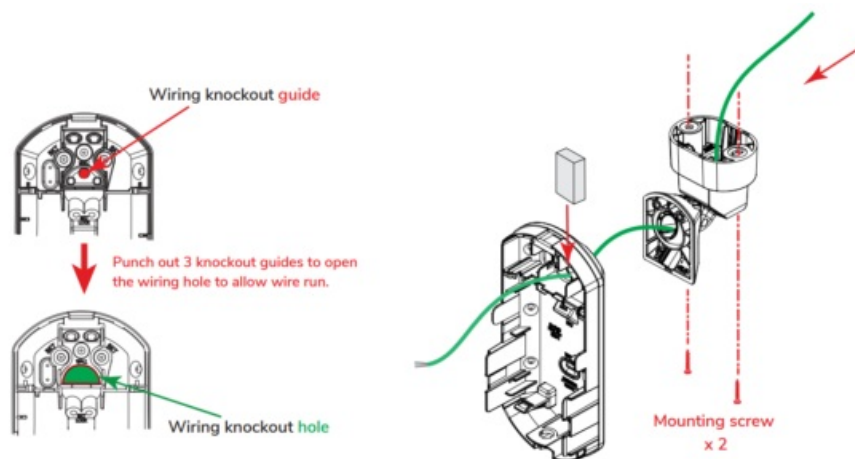
2. Rotate the body.



3. Tighten the fixing screw.

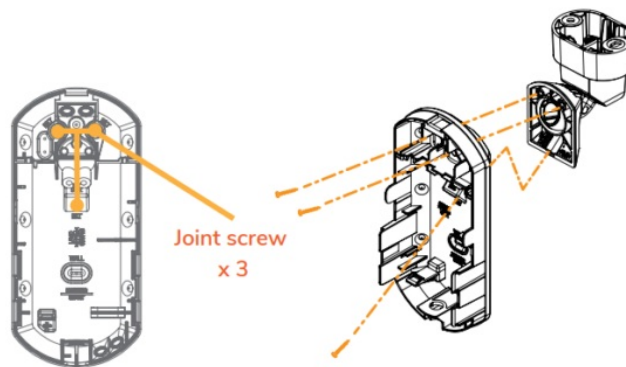


1. Wire and mount on the ceiling

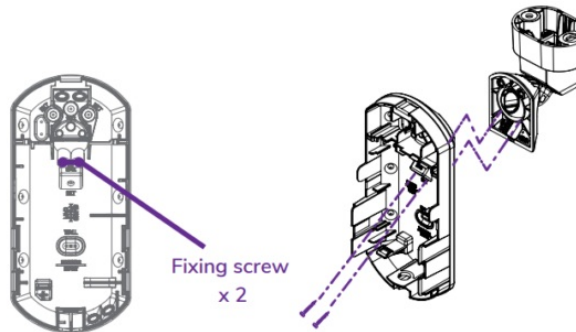


NOTE See page 4 for how to break the knockouts.

2. Join the base on the bracket



3. Fix the base with the fixing screws (optional)

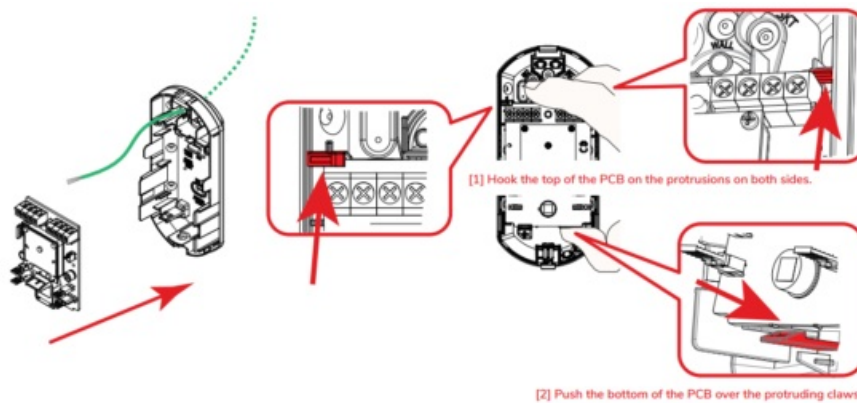


The bracket is basically jointed using 3 holes and 3 joint screws. Also use 2 additional fixing screws if stronger support is required.

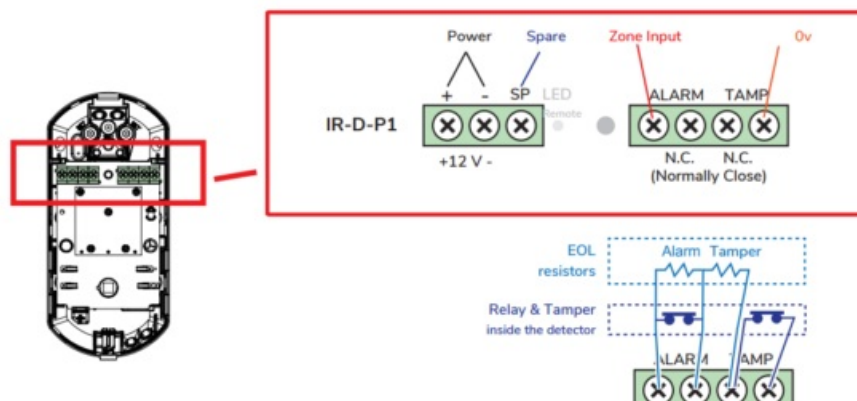
NOTE 2 fixing screws are required for the Grade 2 and higher grade installation.

1-5. Assemble and connect

1. Attach the main unit to the base



2. Connect wires to the terminal



Power cable length

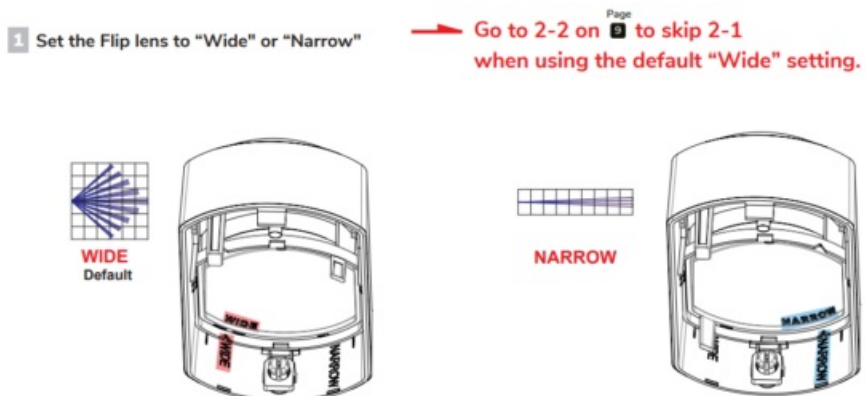
The power cable should be limited to the following length.

IR-D-P1

WIRE GAUGE	12 V DC	14 V DC
AWG 22 (0.33 mm ²)	520 m (1,710 ft.)	1,130 m (3, 718 ft.)
AWG 20 (0.52 mm ²)	820 m (2,690 ft.)	1,790 m (5,870 ft.)
AWG 18 (0.83 mm ²)	1,320 m (4,330 ft.)	2,850 m (9,350 ft.)

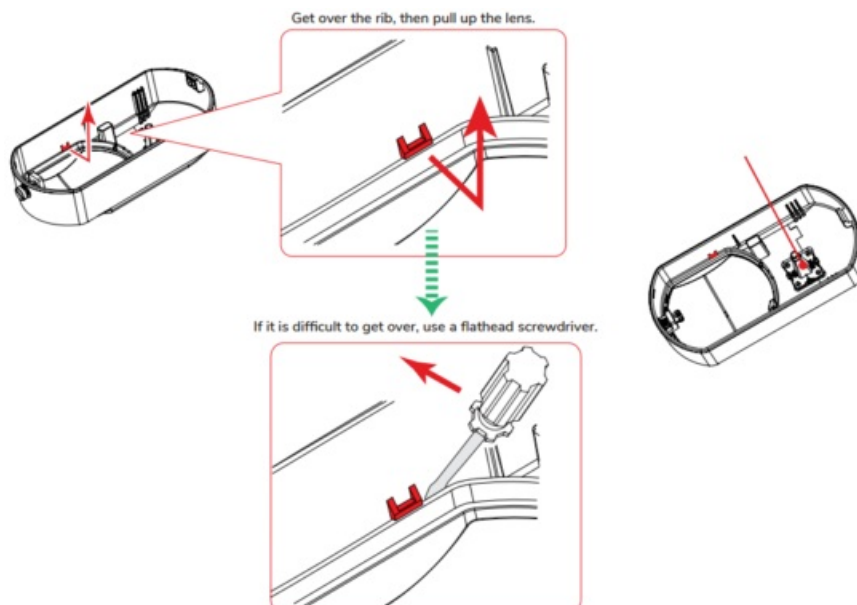
Settings

2-1. Wide/Narrow setting



NOTE Install the lens so that the letters on the cover and on the lens match your intention.

How to remove the lens



 **Caution**

Be careful not to damage the light path of the LED.

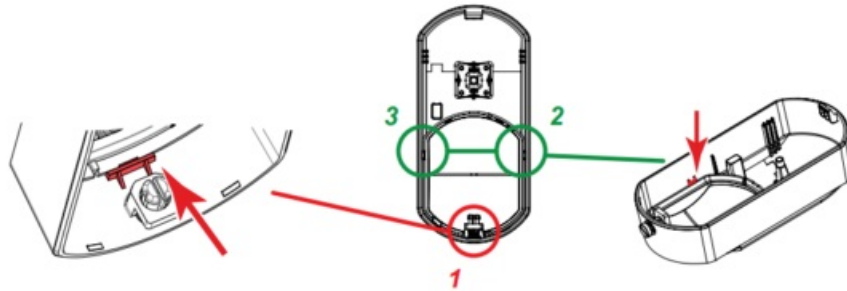
Also, be careful not to allow the light path to pinch the wiring when closing the cover.

⚠ Caution

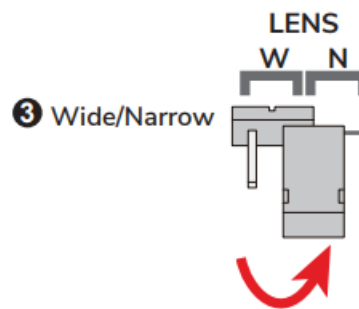
Be careful not to damage the lens with a screwdriver.

How to install the lens

Push the lens firmly at 3 points in numerical order.



Set the jumper pin to “Wide” or “Narrow”



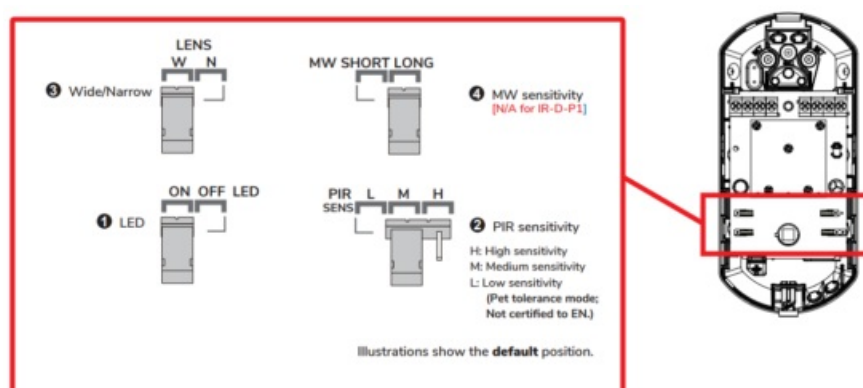
⚠ Caution

- The jumper pin must be “Narrow”, when the lens is set to “Narrow”.

NOTE

- Default setting is “Wide”.
- When “Narrow” is selected, MW detection will be disabled.

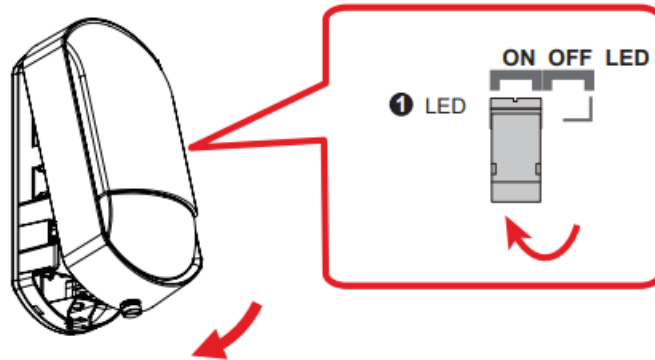
2-2. Jumper pin settings



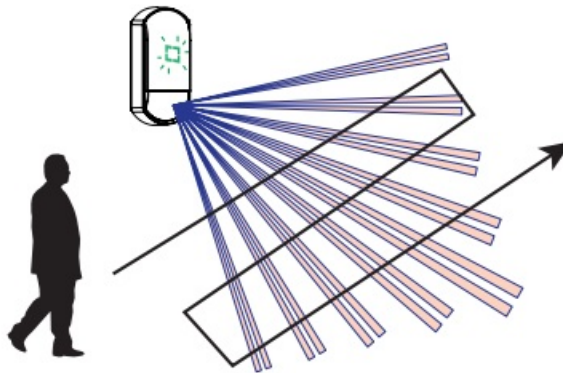
Checking

3-1. Walk test

1. Confirm that the LED pin is “ON”, then close the cover.

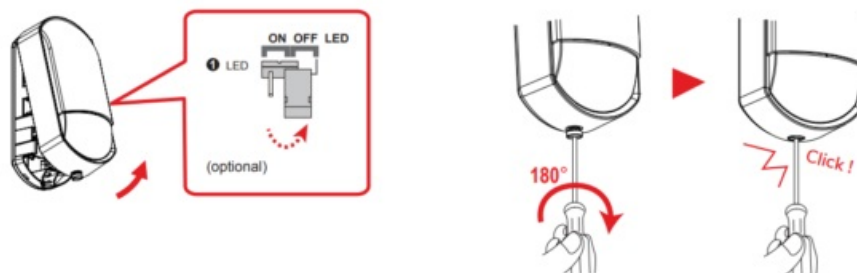


2. Walk in the detection area to check the detecting performance via LED indication.



3. Return the LED pin to “OFF” after the walk test, if necessary.

4.



Lock the cover

NOTE Conduct a walk test at least once a year.

Other

– Specifications

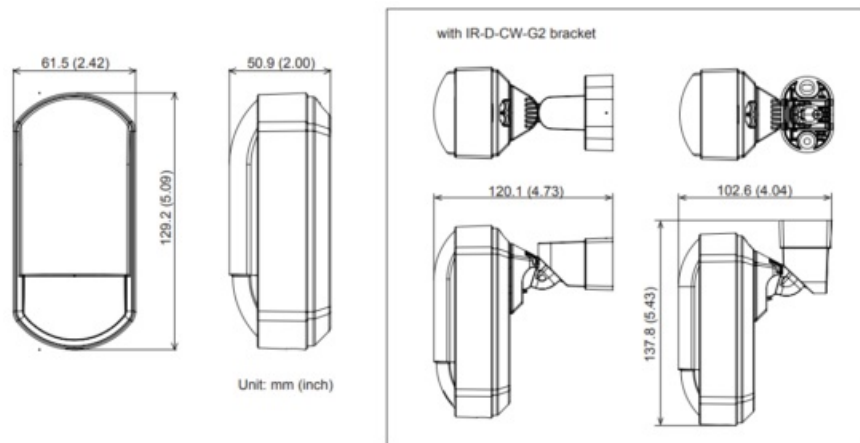
Model		IR-D-P1
Installation		
Detection method		Passive infrared
Coverage		Wide 12 m (40 ft.) 85°/ Narrow 18 m (60 ft.) 5° (No MW detection at “Narrow” setting)
Detection zones		Wide: 76 zones/ Narrow: 12 zones
Mounting height		2.0 to 3.0 m (6’7” to 9’8”)
Alarm period		2.0 ± 0.5 s
Warm-up period		Approx. 60 s (LED blinks)
LED indicator		Switchable ON/OFF Green: [1] Warm-up [2] Alarm
Electrical		
Power input		9.5 to 16 V DC UL *
Current draw		8 mA (normal) 11 mA (max.) at 12 V DC
Relay output	Alarm	N.C. 24 V DC 0.1 A max. (Resistive load)
	Tamper	N.C. 24 V DC 0.1 A max. (Resistive load) (Open when the cover is removed.)
Remote LED		
Environmental		
Operation temperature		-20°C to +50°C(-4°F to +122°F)
Temperature compensation		Digital (SMDA)
Environmental humidity		95% max.
RF interference		No alarm 10 V/m
Mechanical		
Dimension		H: 129.2 x W: 61.5 x D: 50.9 mm (H: 5.09” x W: 2.42” x D: 2.00”)
Weight		Approx. 90 g (3.17 oz) (with Bracket : Approx. 120 g (4.23 oz))
Mounting		Wall, Corner (Indoor) (with Bracket : Wall, Corner, Ceiling)

- Specifications and designs are subject to change without prior notice.
- These units are designed to detect an intruder and activate an alarm control panel.

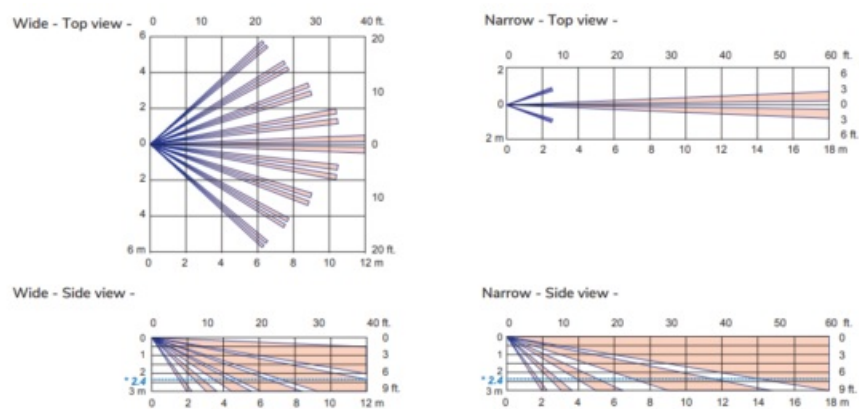
Being only a part of a complete system, we cannot accept responsibility for any damages or other consequences resulting from an intrusion.

UL * Shall be powered via a UL listed burglar alarm class 2 output power limited power supply that has a min standby power of 4 hrs.

– Dimensions



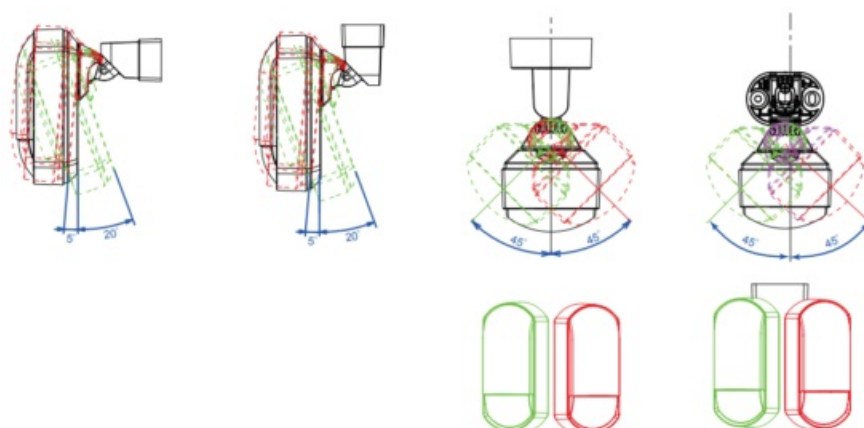
– Detection area



NOTE

- The * 2.4 m dotted line indicates the recommended mounting height.
- Narrow area settings are not certified to the following standards.
EN 50131-2-2 (IR-D-P1)

– Angle adjustment with bracket IR-D-CW-G2



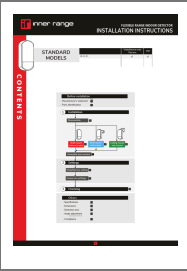
– Compliance

EN 50131-1 Grades and Environmental Class; Security Grade 2, Environmental Class II



Global Headquarters Inner Range Australia 1 Millennium Court, Knoxfield, Victoria, 3180, Australia Inner Range Middle East Plot No S20141, PO Box 16854 Jebel Ali Free Zone – South, Dubai, UAE IR INSTALL MANUAL: 63PIR-OS-IM 202310-31	Inner Range United States 2301 Patriot Blvd Glenview, IL 60026 Inner Range Canada 200 Foster Crescent Mississauga, Ontario, Canada L5R-3Y5	INNERRANGE.COM Inner Range United Kingdom Units 10-11 Theal Lakes Business Park Moulden Way, Reading, Berkshire RG74GB Inner Range India National Sales Office 95 Brigade Road, Bangalore, 560 025 India Copyright (C) 2023 Inner Range Pty Ltd.
--	--	--

Documents / Resources

	Inner range IR-D-P1 Flexible Range Indoor Detector [pdf] Instruction Manual IR-D-P1, IR-D-CW-G2, IR-D-P1 Flexible Range Indoor Detector, IR-D-P1, Flexible Range Indoor Detector, Range Indoor Detector, Indoor Detector, Detector
--	---

References

- [User Manual](#)

[Manuals+](#), [Privacy Policy](#)

This website is an independent publication and is neither affiliated with nor endorsed by any of the trademark owners. The "Bluetooth®" word mark and logos are registered trademarks owned by Bluetooth SIG, Inc. The "Wi-Fi®" word mark and logos are registered trademarks owned by the Wi-Fi Alliance. Any use of these marks on this website does not imply any affiliation with or endorsement.