



INKBIRD Smoker Controller User Manual

[Home](#) » [INKBIRD](#) » INKBIRD Smoker Controller User Manual

INKBIRD

SMART HOME | SMART LIFE

ISC-007BW
Smoker Controller

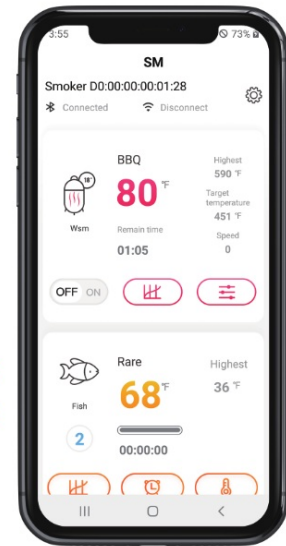
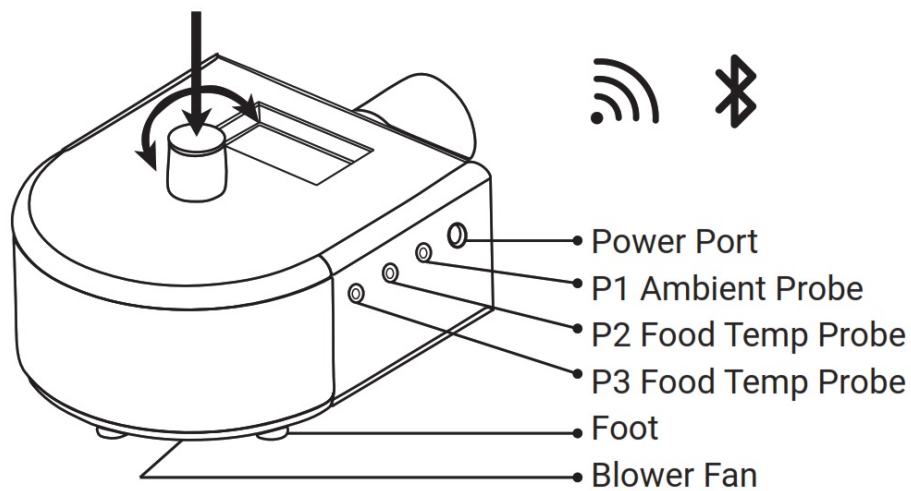
Contents [[hide](#)]

- 1 Introduction
 - 1.1 Description
 - 1.2 Item List
 - 1.3 Basic Operation
 - 1.3.1 Main Page
 - 1.3.2 Menu Setting
 - 1.3.3 BBQ
- 2 Specification
- 3 Wireless Connection
 - 3.1 Get the Inkbird Pro app for your phone
 - 3.2 Account Registration
 - 3.3 Wi-Fi Connection
 - 3.3.1 Connect the smoker controller to your phone in Fast Flash Mode
 - 3.3.2 Connect the smoker controller to your phone in AP mode
 - 3.3.3 Wi-Fi Reset
 - 3.4 Bluetooth Connection
 - 3.5 Main Interface of the Smoker Controller on Inkbird Pro
- 4 Precautions
- 5 Documents / Resources
 - 5.1 References
- 6 Related Posts

Introduction

Description

Press the knob to enter the menu or confirm the selection. Turn the knob to change between selections. Hold the knob to exit the menu page and back to the home screen. Hold the knob to pause the fan before opening the lid.



Item List

Smoker Controller*1
Power Plug*1
Probe*3
Blast Pipe*1
Damper*1

Basic Operation

Main Page

P1: 210	T: 225
P2: 130	F: 10
P3: 95	⌚ 01:22

Home Screen

P1: Current Grill Temp
P2: Food Temp
P3: Food
T: Target Temp
F: Fan Power%

⌚ : Timer Indicator

Place the smoker controller on a stable and firm surface. Let the controller gradually increase the temperature, it will take 30-45 minutes to stabilize the grill temperature.

Menu Setting

Click the Knob to enter Main Menu.

> **BBQ**
Manual Fan
Set Alert
Reset



Select “Reset” from the main menu to reset the current running mode.

> **BBQ**
Manual Fan
Set Alert
Reset



BBQ

1. Select “BBQ” from the Main Menu, and click to enter.
2. Rotate the knob to set a target temperature, then click the knob to confirm the target value, the controller will back to main interface and display BBQ status.

SET TEMP

200

3. The maximum fan power is limited to 70% on smaller grills.

Please set the fan, the temperature alarm, the temperature unit, the furnace size manually according to the above operations.

Specification

- Model: ISC-007BW
- Size: 11.42in*8.66in*5.51in
- Weight of the Controller: 6.84oz/194g
- Input Voltage: DC 12V/2A
- Short Time Measurement Range: from 0°C to 300°C(32°F~572°F)
- Continuous Monitoring Range: from 0°C to 250°C(32°F~482°F)
- Temperature Accuracy: $\pm 1^{\circ}\text{C}/\pm 1.8^{\circ}\text{F}$
- Calibration: $\pm 12^{\circ}\text{F}/\pm 12^{\circ}\text{C}$
- Connection Methods: support Wi-Fi connection and Bluetooth connection
- Type of Wi-Fi Network: 2.4GHz Wi-Fi (Support IEEE 802.11b/g/n)
- Maximum Bluetooth Connection Distance: 164ft(the distance will be shorter if there are interferences).
- Waterproof: Not waterproof
- Warranty: 1 year

Note: If you choose a Wi-Fi connection, the chart data will be saved in the server if you choose Bluetooth connection, the chart data will be saved into the local storage of the device (the local storage can store up to 3 days of data)

Wireless Connection

Get the Inkbird Pro app for your phone

Get the Inkbird Pro app from Google Play or App Store to download it for free, or you can scan the QR code to download it directly.



iOS

<https://apps.apple.com/cn/app/inkbird-pro/id1456502212>



Android

Scan QR code to download Inkbird Pro APP

Account Registration

Register before using the Inkbird Pro app. Select your Country/Region, enter your e-mail, a verification code will be sent to your mailbox, enter it to confirm your identity, and the registration is done.

Note: If you have registered an account before, just log indirectly.

The device only supports a 2.4GHz Wi-Fi router.

Wi-Fi Connection

Connect the smoker controller to your phone in Fast Flash Mode

1. Plug in the smoker controller, the controller will be turned on automatically.
2. Open the app and click “+” to start the connection, choose ISC-007BW from the device list.
3. Choose Fast Flash mode and make sure that the smoker controller is in Fast Flash mode.
4. Choose a preferred Wi-Fi network and enter the password to connect.
5. Wait for a few seconds and put the smoker as much as close to your phone while pairing
6. Pairing Success!

Connect the smoker controller to your phone in AP mode

We recommend using Fast Flash mode to connect the smoker to the phone. If you cannot use this method to succeed, please try AP Mode (Slow Flashing mode). Press and hold the button for seconds to switch to AP mode, the Wi-Fi icon flashes slowly in AP mode.

1. Plug in the smoker controller, the smoker controller will be turned on automatically.
2. Open the app and click “+” to start the connection, choose ISC-007BW from the device list.
3. Confirm the Wi-Fi icon of the smoker controller is blinking slowly and choose Slow Flash mode, click “Next step” to start the connection.
4. Choose a preferred Wi-Fi network and enter the password, then click “Confirm” to go to the next step.
5. Enter into your phone’s WLAN interface and connect to the “SmartLife XXXX” Wi-Fi network without typing in the password. Return to the app and confirm that the network has been successfully connected.
6. Wait for a few seconds and put the smoker as much as close to your phone while pairing.
7. Pairing Success!

Note:

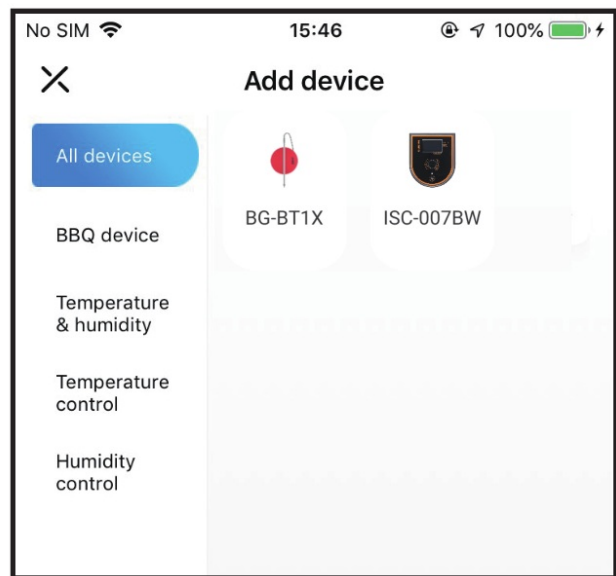
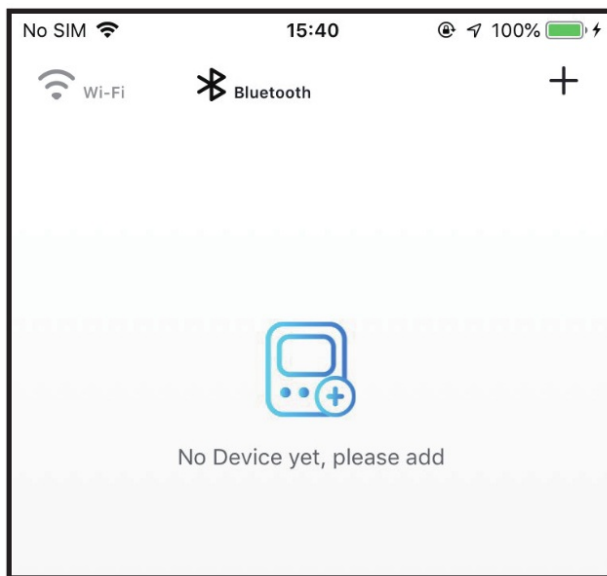
1. Please let the app access Location Services when connecting the smoker with your phone for the first time.
You can choose Allow While Using App if you are worried about privacy.
2. The Android System phones need GPS to work properly, please turn on the GPS on your phone.

Wi-Fi Reset

Press and hold the “Wi-Fi” button for 5 seconds to reset the Wi-Fi, then follow the guide to pairing the device with your phone.

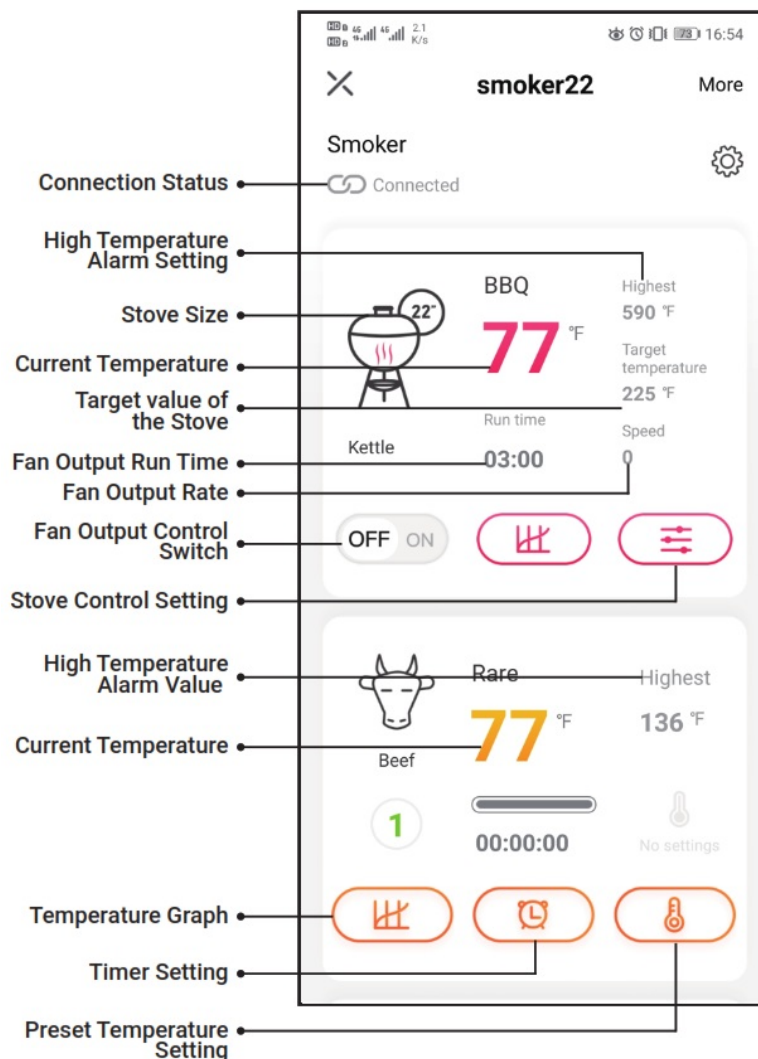
Bluetooth Connection

1. Plug in the smoker controller and the controller will be turned on automatically.
2. Turn on your Bluetooth, click “Next step” to start the connection.
3. Wait for a few seconds and put the smoker as much as close to your phone while pairing.
4. Pairing Success.



Note: Please turn on GPS on your Android phone as Google Play requires it to work fully. Once the device is successfully paired with your phone, you don't need to pair it again unless you change your phone.

Main Interface of the Smoker Controller on Inkbird Pro

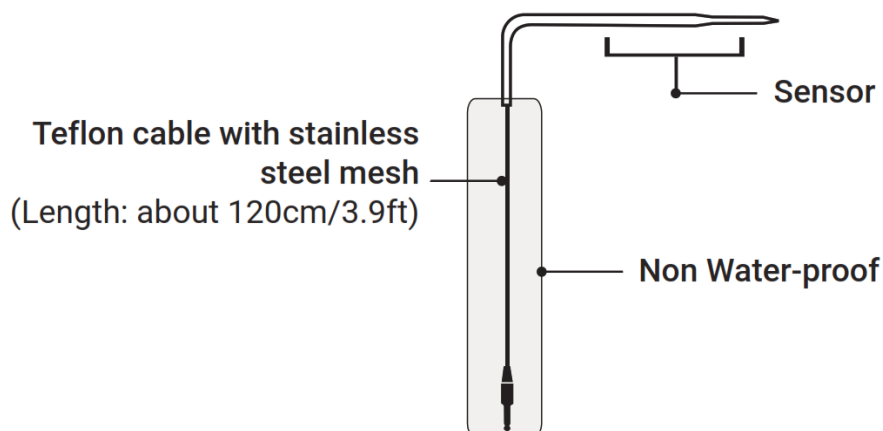


Precautions

The maximum temperature for short time measurement is 300°C/572°F and the maximum temperature for long time measurement is 250°C/482°F, the probe and the metal wire will be burned out if the temperature goes beyond the maximum number.

Do not put probes or metal wire into fire or contact the heating tube directly. Do not put probes or the metal wire into the water, it may lead to inaccurate measurements.

Do not press probes or the metal wire too hard, it may damage the plastic film of the wire and lead to a short circuit. Please take off the silicon case before using the probe.





INKBIRD TECH.C.L
Support@ink-bird.com
www.ink-bird.com
+86-755-25738050
Shenzhen,GD,518000,China

<http://www.ink-bird.com>



Documents / Resources

 	INKBIRD Smoker Controller [pdf] User Manual Smoker Controller, ISC-007BW
--	---

References

- [Bird.com](#)
- [INKBIRD | for smart home living](#)

