




INKBIRD HO-WT-2Z Temperature Controller User Guide

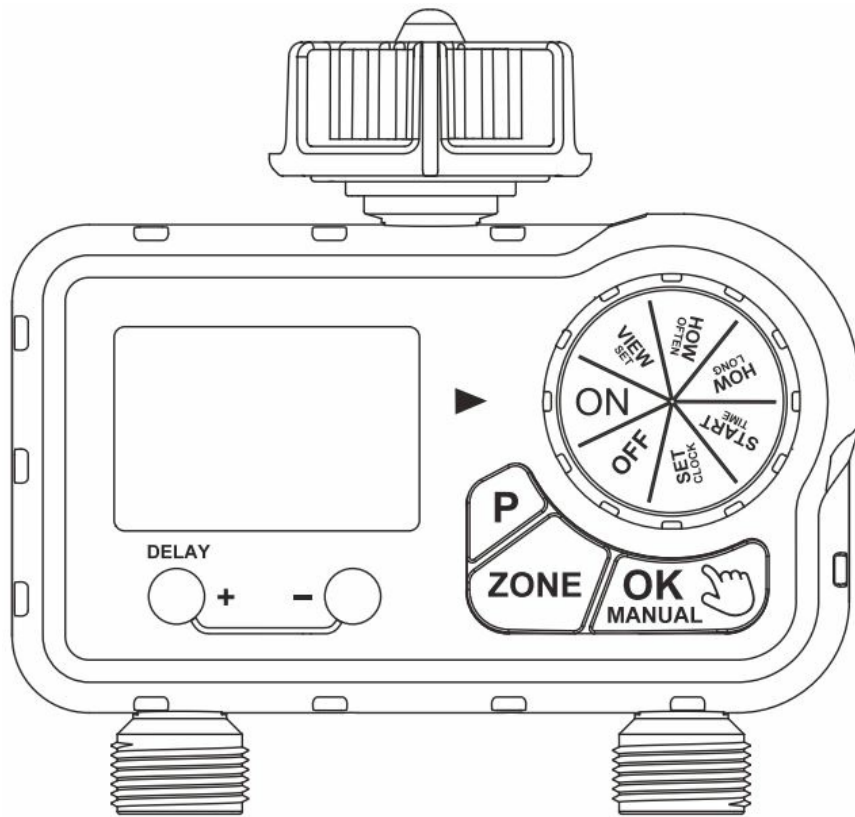
[Home](#) » [INKBIRD](#) » INKBIRD HO-WT-2Z Temperature Controller User Guide 

Contents

- [1 INKBIRD HO-WT-2Z Temperature Controller](#)
- [2 Product Information](#)
- [3 Product Usage Instructions](#)
- [4 Check the water inlet filter](#)
- [5 Insert the batteries correctly](#)
- [6 Install the timer on a 3/4" garden faucet](#)
- [7 Activate the timer valve before use](#)
- [8 Troubleshooting](#)
- [9 Warranty](#)
- [10 Documents / Resources](#)
- [11 Related Posts](#)

INKBIRD

INKBIRD HO-WT-2Z Temperature Controller



Product Information

- The product is a timer for outdoor use with cold water only.
- Tools should not be used for installation.
- The water inlet filter needs to be cleaned regularly.
- The timer requires 2 new AAA alkaline batteries (not included).
- The timer valve needs to be activated before use.
- The product comes with troubleshooting instructions and a warranty.

Product Usage Instructions

1. Before installation, ensure that tools are not used and the water inlet filter is clean.
2. Install the timer on a 3/4 garden faucet, making sure that the water inlet is higher than all water outlets.
3. Place the timer indoors in advance to prevent frost in anticipation of freezing weather.
4. Insert 2 new AAA alkaline batteries into the timer (not included).
5. Activate the timer valve before use by pressing the button to switch zones.
6. Check for water leaks before use to ensure proper installation.
7. Congratulations, your timer is now ready to use!

Troubleshooting

If you encounter any problems with the timer, refer to the troubleshooting section of the manual for possible causes and solutions. If the problem persists, contact customer support during the warranty period for assistance.

Warranty

The product comes with a warranty. Please refer to the manual for details on coverage and how to make a claim.

Need Help?

If you have any questions or need further assistance with the product, please contact customer support via email.

Note before installation

Do not use tools for installation

Clean the water inlet filter regularly

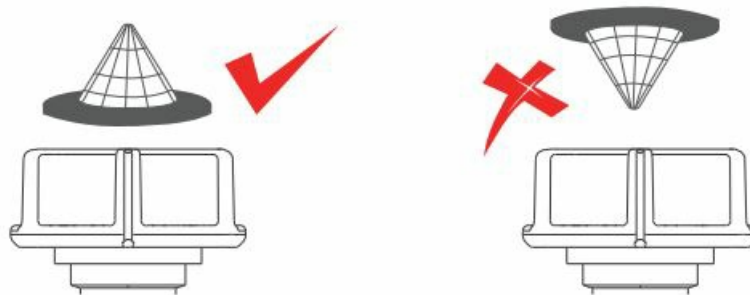
For outdoor use with cold water only

Please place the timer indoors in advance to prevent frost in anticipation of freezing weather.

Check the water inlet filter

The filter prevents impurities from entering and blocking the valve, and its peripheral rubber ring seals the connection to avoid leaks.

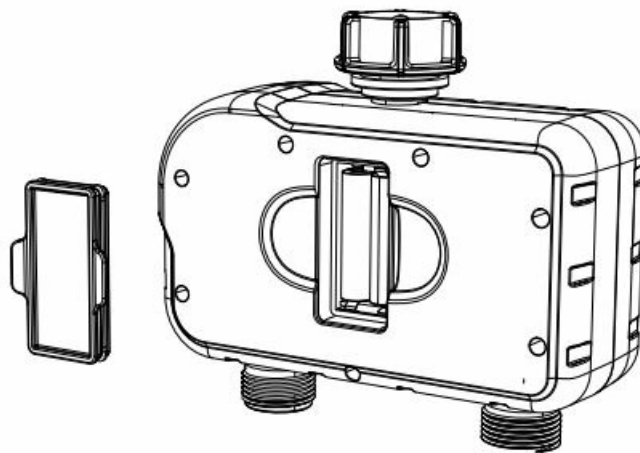
Please install the water inlet filter correctly as shown below.



Insert the batteries correctly

Requires 2 new AAA alkaline batteries (not included).

Tightly reinstall the battery tray to ensure waterproofing.



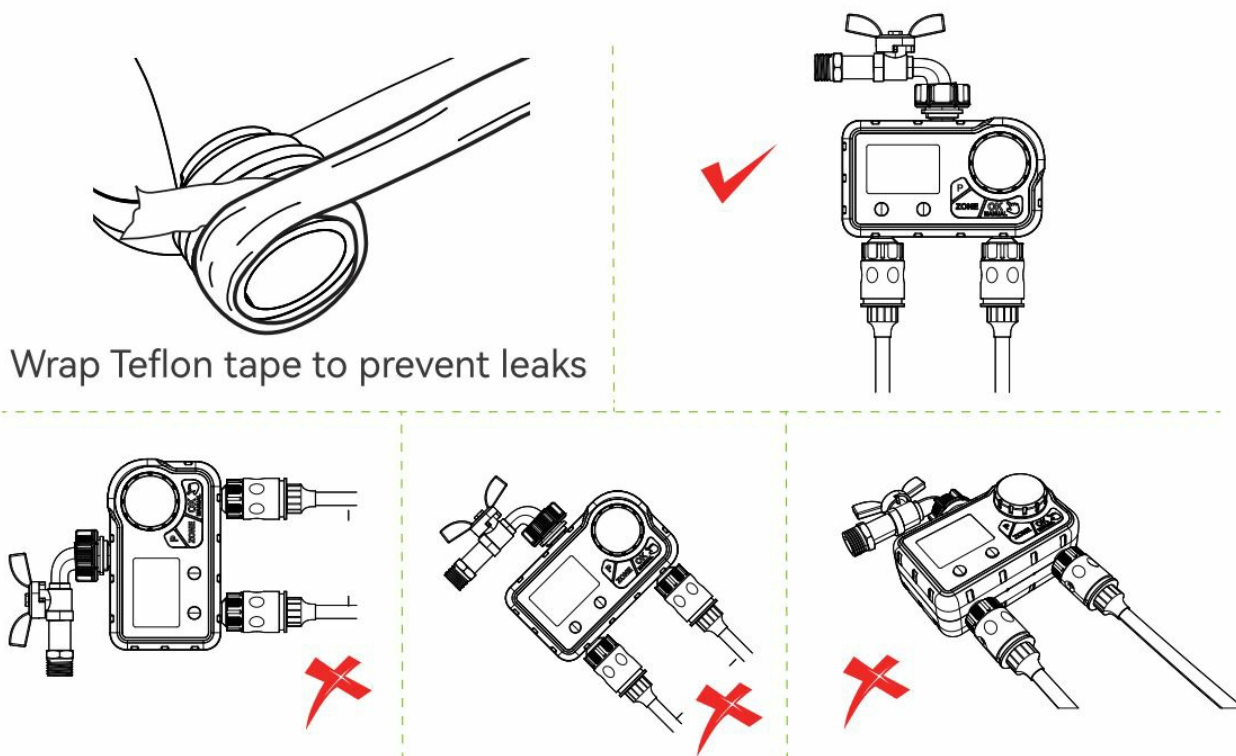
Install the timer on a 3/4" garden faucet

Warning:

1. Keep the faucet off and install the timer on it (hand tight only).

2. Ensure the water inlet is higher than all water outlets.
3. The display should be as vertical as possible to the ground to prevent rainwater infiltration.

Tips: In order to ensure no water leaks, we recommend that wrap Teflon tape around the threads of the faucet or hose.



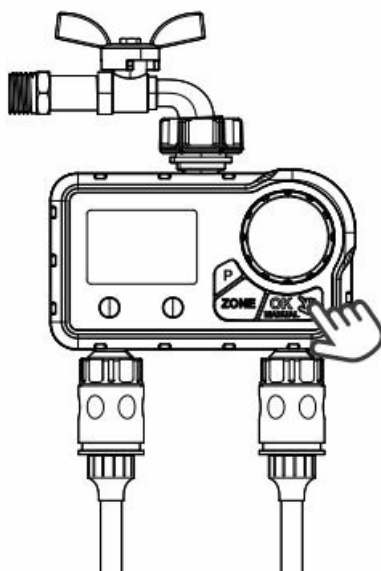
Activate the timer valve before use

Keep the faucet off and turn the dial to "ON"

Press and hold the "OK" button to manually turn the valve on, after hearing a "click" or 5 seconds, turn the dial to "OFF" to close the valve. Repeat the above operation 3~5 times.

The timer has 2 zone outlets, repeat the above for each outlet separately (press the "ZONE" button to switch zones).

See the user manual for details.



Check for water leaks before use

- Keep away from the timer water outlet to avoid splashing water, and turn on the faucet gently.
- Check:
 1. Check whether the water inlet is leaking.
 2. Repeat step 4 to check whether water flows out or closes when the valve is opened or closed.

Congratulations!

You have completed the installation of the timer.

Now please see the user manual to start programming your watering schedule.

Troubleshooting

Problem	Possible Cause	Possible Solution
The water inlet leakage	<ol style="list-style-type: none">1. No filter or not be placed horizontally2. The faucet is not the standard 3/4"	<ol style="list-style-type: none">1. Add a filter and make sure it's placed horizontally in the inlet.2. Make sure the faucet is a standard 3/4" faucet.3. Wrap Teflon tape on the tap making it tight.
The water won't stop /flow out	<ol style="list-style-type: none">1. Long-term storage and transportation make the valve inactive2. Valve blockage	<p>Step 1. Keep the faucet turned off and turn the timer dial to "ON".</p> <p>Step 2. Hold the "OK" button into manual mode, press "Zone" button to switch the zone,run watering for 3-5s and turn the dial to "OFF" to stop.</p> <p>Step 3. Repeat the Step 2 for 5 to 7 times.</p> <p>Step 4. Try using it normally.</p>
Low water pressure	<ol style="list-style-type: none">1. Filter blockage2. Inlet pressure not sufficient to support watering needs	<ol style="list-style-type: none">1. Check if the filter is clogged, if so, clean or replace the filter.2. Make sure the timer is installed properly and not cross-threaded.3. Installation of a booster pump or other auxiliary equipment of increasing pressure

Warranty

We provides a 1-year limited warranty on this product against manufacturing defects in materials and workmanship. If you contact us to register and activate the warranty, you can get a longer warranty period.

Need help?

If it doesn't work and you want to return or replace it, please contact us for support during the warranty period.

E-mail: support@inkbird.com

Documents / Resources

	INKBIRD HO-WT-2Z Temperature Controller [pdf] User Guide HO-WT-2Z Temperature Controller, HO-WT-2Z, Temperature Controller, Controller
---	---

Manuals+.