




**INGSCREEN IS-  
AD43 SProgram For  
Phone**



# INGSCREEN IS-AD43 SProgram For Phone Owner's Manual

[Home](#) » [Ingscreen](#) » INGSCREEN IS-AD43 SProgram For Phone Owner's Manual 

## Contents

- [1 INGSCREEN IS-AD43 SProgram For Phone](#)
- [2 Product Information](#)
- [3 Product Usage Instructions](#)
- [4 Manual for SinglePublishing](#)
- [5 FCC Statement](#)
- [6 FAQ](#)
- [7 Documents / Resources](#)
  - [7.1 References](#)



**INGSCREEN IS-AD43 SProgram For Phone**



## Product Information

### Specifications

- Supported Media: Pictures and Videos
- Maximum Picture Size: 3MB
- Maximum Video Size: 300MB

### Product Usage Instructions

#### Step 1: Prepare the USB or SD Card

Use an empty USB or SD card. Create a new file on the storage device and name it “SProgram”.

#### Step 2: Add Pictures and Videos

Put pictures and videos in the “SProgram” file. Ensure that each picture is less than 3MB and each video is less than 300MB.

#### Step 3: Copy Files to Signage

Turn on the signage device. It will display a page. Connect the USB or SD card to the signage’s USB port. It will show “Copying File of SProgram!”. Once the copy is finished, it will display “File of SProgram copy successfully!”. You can then safely remove the USB, as the files have been copied successfully.

#### Step 4: Publish Content

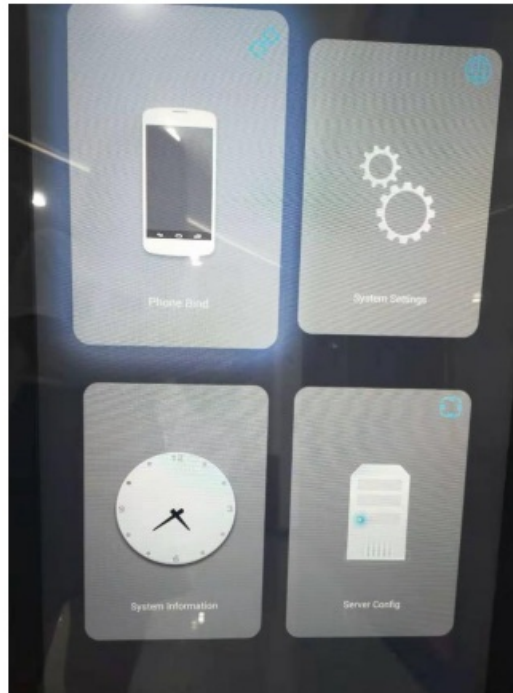
Go back to the home page on the signage device. Choose “Information Publish” and then select “Single Publish”. You will see different playing templates. Choose the template you need (1 picture, 1 video, or both on the same screen). The signage will automatically display the content from the “SProgram” file.

## Manual for SinglePublishing

1. Use an empty USB , or SD card , create a new file , name it "SProgram"
2. Put the pictures and videos in the file "SProgram" (Single picture size less than 3M , single video size less than 300M).



3. Turn on the signage, it will show the below page :

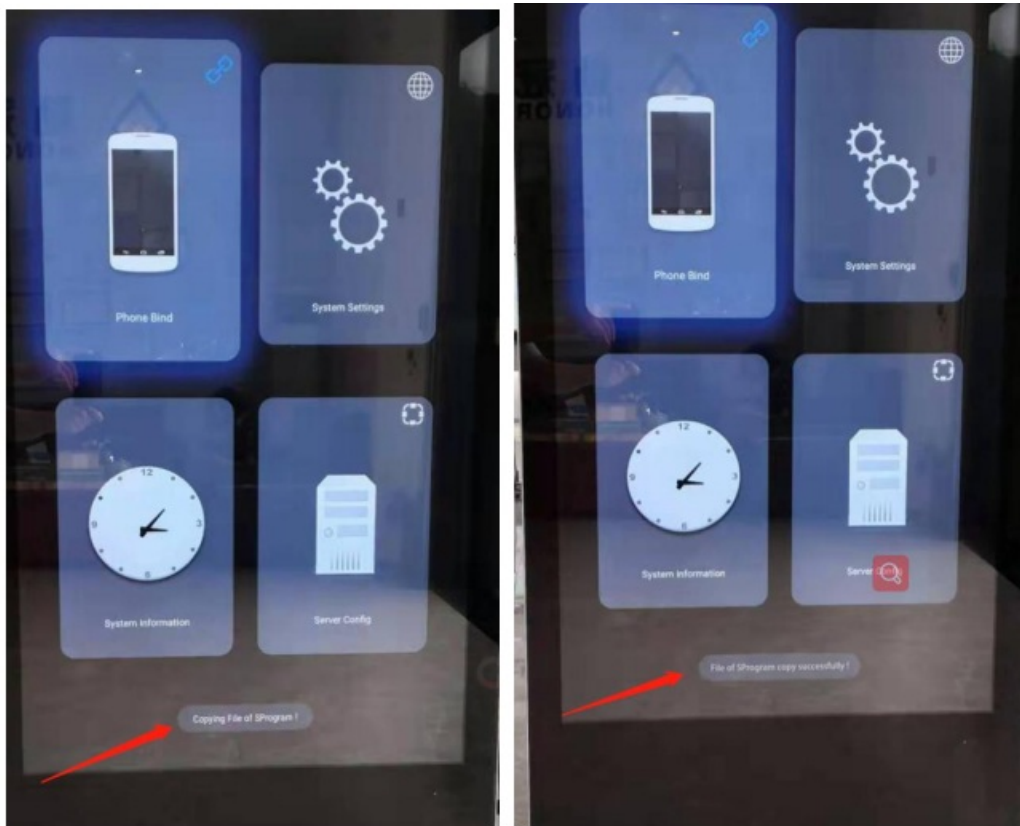


4. Connect the USB or SD card to the signage USB port .

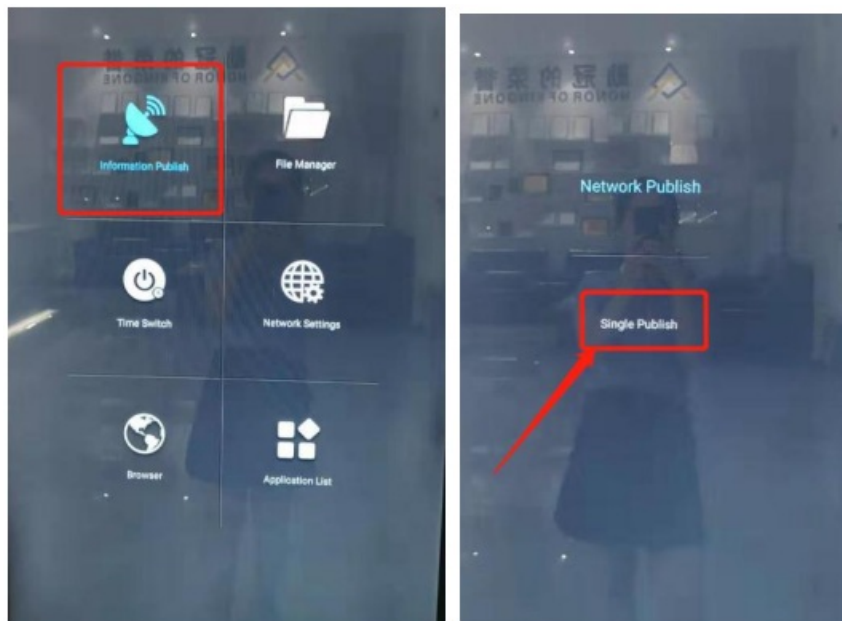
It will show "Copying File of SProgram! ".

When the copy finished , it will show "File of SProgram copy successfully!" .

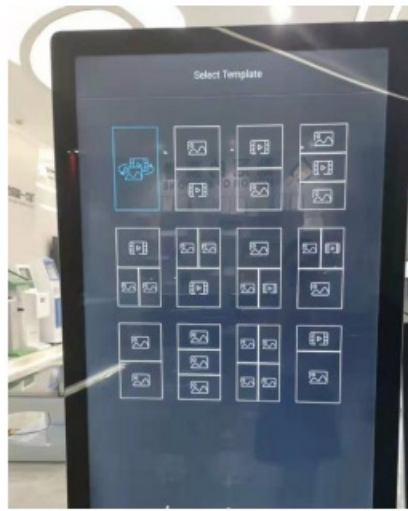
Then you can remove the USB , the files has been copied into the signage successfully.



5. Back to the home page , choose “Information Publish”, Choose “Single Publish”.



6. Then you will see below different playing template : it can play 1 picture, or 1 video, or picture and video playing on the same screen , choose the playing template you need, signage will display the pictures and videos in the SProgram automatically.



## **FCC Statement**

This equipment has been tested and found to comply with the limits for a Class B digital device, pursuant to part 15 of the FCC Rules. These limits are designed to provide reasonable protection against harmful interference in a residential installation. This equipment generates, uses and can radiate radio frequency energy and, if not installed and used in accordance with the instructions, may cause harmful interference to radio communications. However, there is no guarantee that interference will not occur in a particular installation. If this equipment does cause harmful interference to radio or television reception, which can be determined by turning the equipment off and on, the user is encouraged to try to correct the interference by one or more of the following measures:

- Reorient or relocate the receiving antenna.
- Increase the separation between the equipment and receiver.
- Connect the equipment into an outlet on a circuit different from that to which the receiver is connected.
- Consult the dealer or an experienced radio/ TV technician for help.

This device complies with part 15 of the FCC Rules. Operation is subject to the following two conditions: (1) This device may not cause harmful interference, and (2) this device must accept any interference received, including interference that may cause undesired operation.

## **Caution**

Any changes or modifications not expressly approved by the party responsible for compliance could void the user's authority to operate the equipment.

## **FCC Radiation Exposure Statement**


This equipment must be installed and operated in accordance with provided instructions and the antenna(s) used for this transmitter must be installed to provide a separation distance of at least 20 cm from all persons and must not be co-located or operating in conjunction with any other antenna or transmitter. End-users and installers must be provided with antenna installation instructions and transmitter operating conditions for satisfying RF exposure

## **FAQ**

### **Q: What types of media files are supported?**

A: The device supports pictures and videos. Ensure pictures are less than 3MB and videos are less than 300MB in size.

Documents / Resources

	<p><a href="#">INGSCREEN IS-AD43 SProgram For Phone</a> [pdf] Owner's Manual IS-AD43, IS-AD43 SProgram For Phone, SProgram For Phone</p>
-----------------------------------------------------------------------------------	----------------------------------------------------------------------------------------------------------------------------------------------

References

- [User Manual](#)

Manuals+ Privacy Policy

This website is an independent publication and is neither affiliated with nor endorsed by any of the trademark owners. The "Bluetooth®" word mark and logos are registered trademarks owned by Bluetooth SIG, Inc. The "Wi-Fi®" word mark and logos are registered trademarks owned by the Wi-Fi Alliance. Any use of these marks on this website does not imply any affiliation with or endorsement.