



Ingersoll Rand INSIGHTqcx Cordless Tool Controller User Guide

[Home](#) » [Ingersoll Rand](#) » Ingersoll Rand INSIGHTqcx Cordless Tool Controller User Guide



INSIGHTqcx Cordless Tool Controller User Guide

Contents [[hide](#)]

- [1 Product Information](#)
- [2 Product Safety Information](#)
- [3 Product Specifications](#)
- [4 Year of Manufacture](#)
- [5 Documents / Resources](#)
 - [5.1 References](#)
- [6 Related Posts](#)

Product Information



Save These Instructions

Product Safety Information

Intended Use:

These Cordless Tool Controllers are designed to communicate process data and signals between specific Ingersoll Rand equipment and compatible user equipment such as PLCs, bar code scanners, and printers.

| Power Supply | Input Voltage | Output Voltage |
|--------------|---|----------------|
| 24V DC | 100-240 V — 50-60 Hz, 80 A Max. @ 240 V — | 24.0V DC, 2.1A |



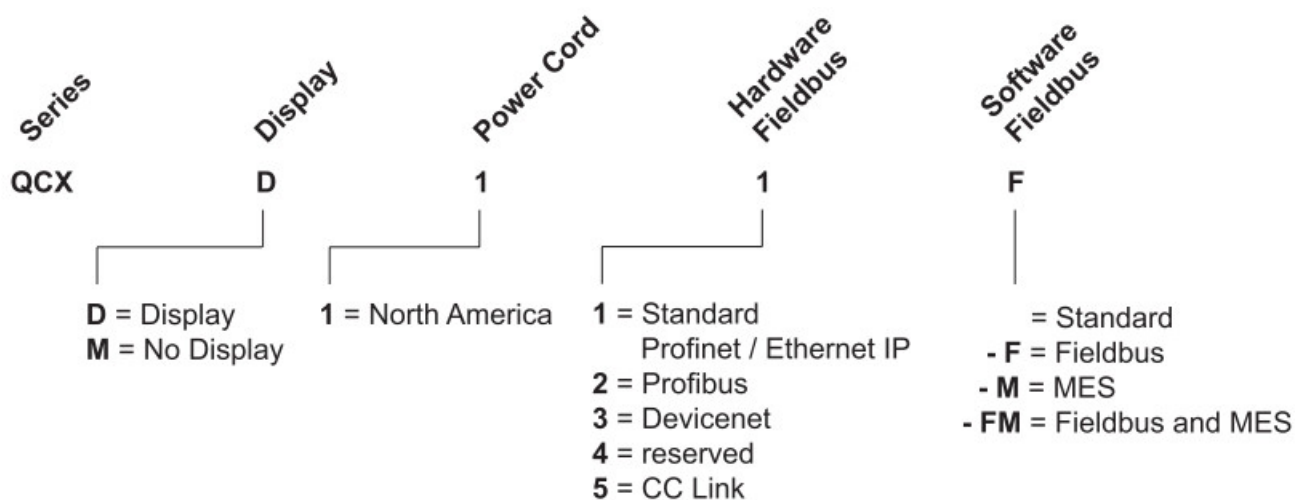
Intertek
5015451

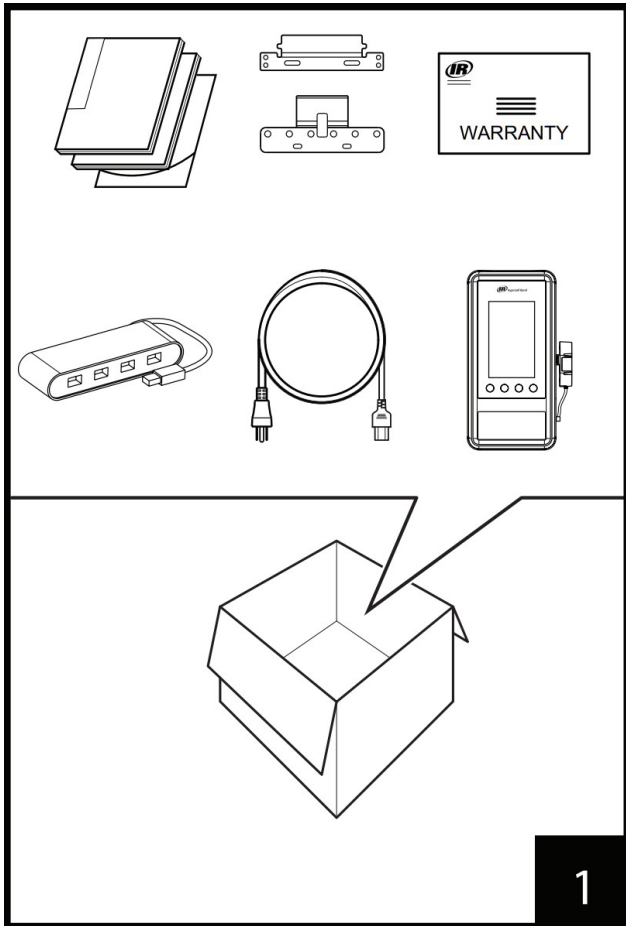
For additional information, refer to Communication Module for Cordless Tools Safety Information Manual 47114541, User Manuals 48619696 and 48619852.

This device conforms to UL STD. 60950-1 & 62368-1; certified to CSA STD. C22.2 No. 60950-1 & 62368-1.
Manuals can be downloaded from ingersollrand.com

Product Specifications

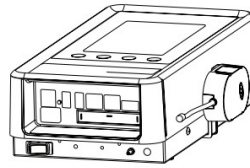
Model Identification



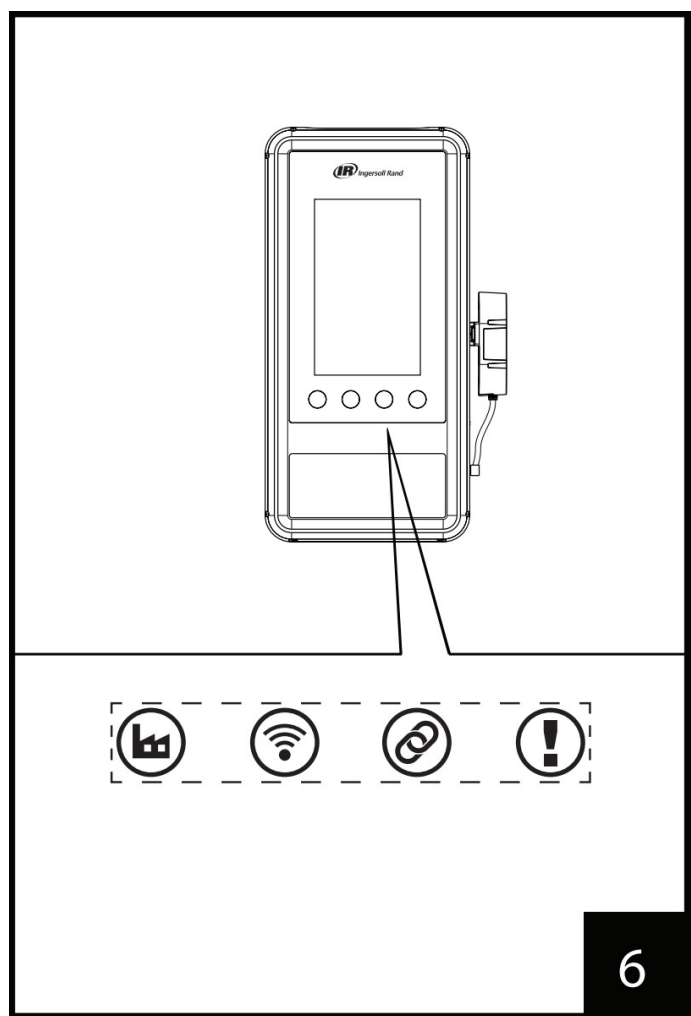
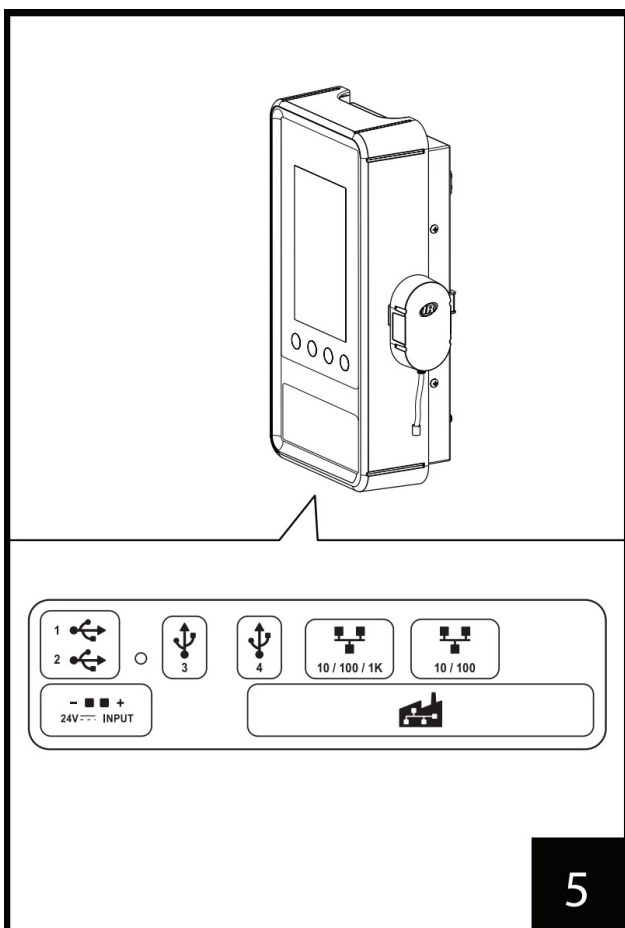
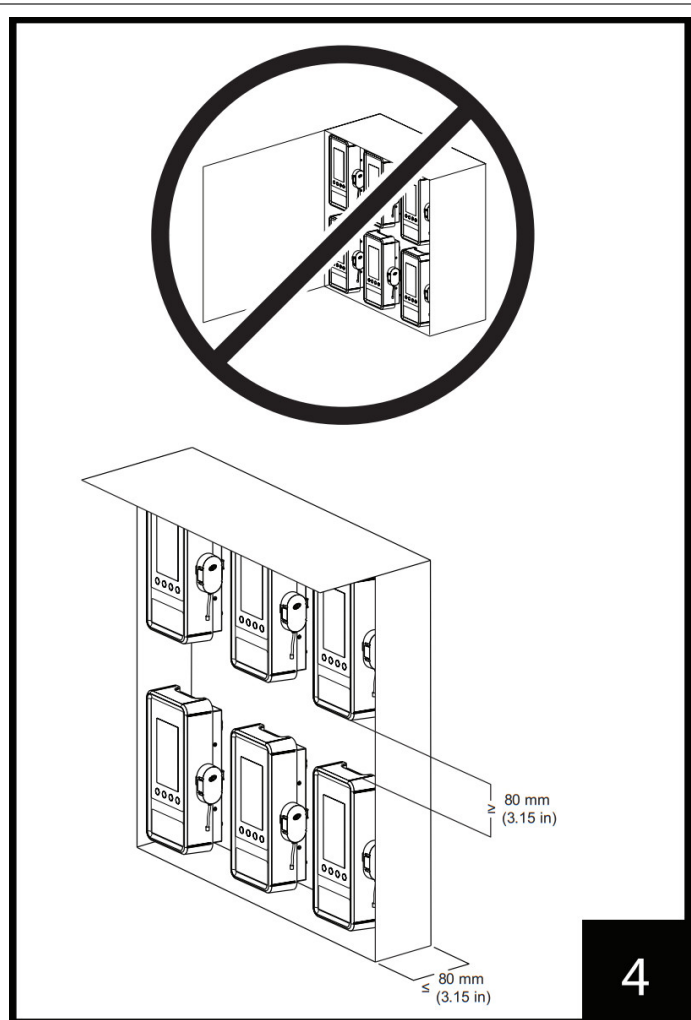
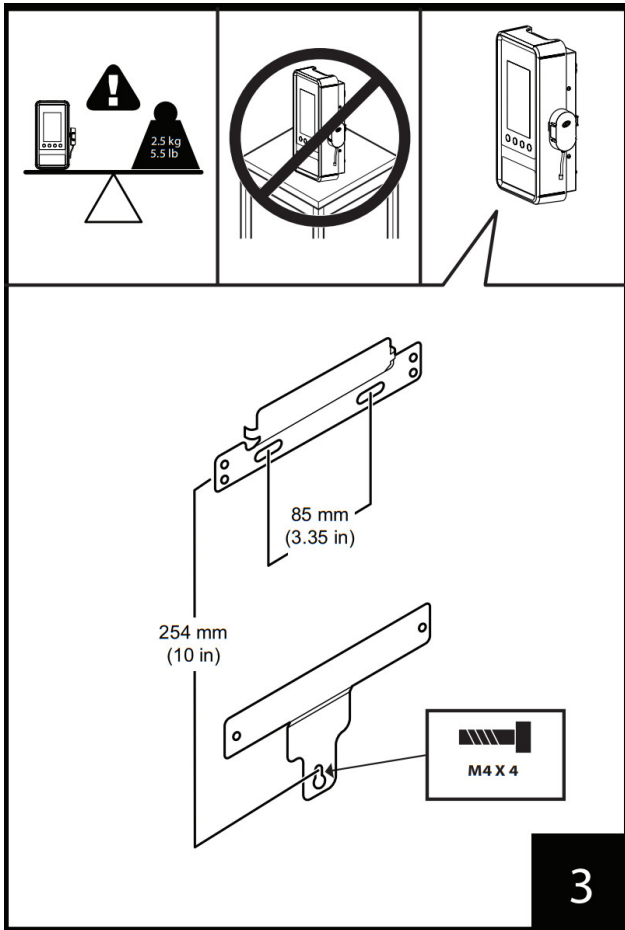


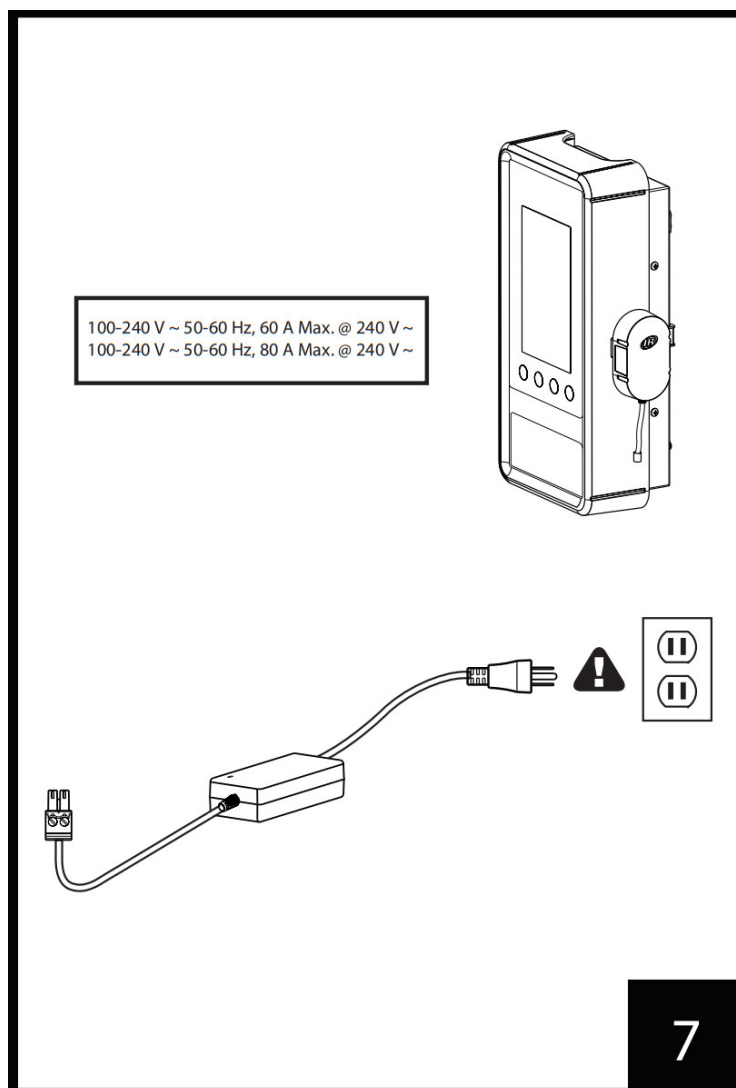
1

A = 222 mm (8.7 in)
B = 463 mm (18 in) - 500 mm (19.7 in)
C = 10 mm (0.4 in)
D = 140 mm (5.5 in)
E = 20 mm (0.8 in)
F = 230 mm (9.0 in)



2





RADIO FREQUENCY (RF) EQUIPMENT DECLARATION OF CONFORMITY

The declarations provided below pertain to the RF devices contained in the Ingersoll Rand product.

This device complies with Part 15 of the FCC Rules. Operation is subject to the following two conditions: (1) this device may not cause harmful interference, and (2) this device must accept any interference received, including interference that may cause undesired operation.

This device contains license-exempt transmitter(s)/receiver(s) that comply with Innovation, Science, and

Economic Development Canada's license-exempt RSS(s). Operation is subject to the following two conditions:

1. This device may not cause interference.
2. This device must accept any interference, including interference that may cause undesired operation of the device.

MPE/SAR/RF exposure information:

This device was verified and found to comply with FCC Part 1.1310 and IC RSS-102 Issue 5 RF exposure requirements set forth for an uncontrolled environment.



WARNING

- While this device is in operation, a separation distance of at least 20 cm (8 inches) or more must be maintained between this device and persons during normal operation.
- Changes or modifications to this unit not expressly approved by the party responsible for compliance could void the user's authority to operate the equipment.



Note: This equipment has been tested and found to comply with the limits for a Class A digital device, pursuant to Part 15 of the FCC Rules.

These limits are designed to provide reasonable protection against harmful interference when the equipment is operated in a commercial environment. This equipment generates, uses, and can radiate radio frequency energy and, if not installed and used in accordance with the instruction manual, may cause harmful interference to radio communications. Operation of this equipment in a residential area is likely to cause harmful interference in which case the user will be required to correct the interference at his own expense.

Ingersoll Rand Industrial Technologies
800-A Beaty Street, Davidson, NC 28036
Phone: 704-896-4000

Declaration of Conformity

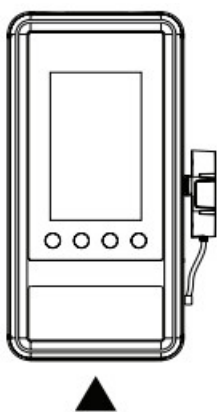
Table 1. Declaration of Conformity Requirement

| | | |
|---|---|---|
| 1 | Date of Issue | September-22 |
| 2 | Manufacturer Name and Address | Ingersoll Rand Industrial Ireland Ltd. / Lakeview Dr, Swords, IE |
| 3 | Object of Declaration | Cordless Tool Controller (*model) QCXD1 and QCXM2 Serial Number Range: K22.1010001 → K30M319999 |
| 4 | Directive(s) Conformity | 2006/42/EC (Machinery), 2014/30/EU (EMC), 2014/35/EU (LVD), 2014/53/EU (RED), 2011/65/EU (RoF15), and 2012/19/EU (WEEE) |
| S | Standard(s) Compliance | EN 60335-1:2012+A2:2019, EN IEC 62368-1:2018, EN IEC 61010-1:2010/AMD1:2016/COR1:2019, EN 61000-6-4:2007+A1:2011, EN IEC 61000-6-2:2019, EN IEC 61000-3-2:2019+A1:2021, EN 61000-3-3:2013+A1:2019, EN IEC 61000-4-2:2008, EN IEC 61000-4-3:2020, EN IEC 61000-4-4:2012, EN IEC 61000-4-5:2014+AMD1:2017, EN IEC 61000-4-6:2013, EN IEC 61000-11:2020, and EN 50581:2012 |
| 6 | Tech File Author Name (EU) Title/Position | Alexis Flipo Product Engineering Manager  |
| 7 | Declaration Author Name Title/Position | John Linehan Global Electric Portfolio & Electrical Engineering Leader  |

This declaration is issued on this day [1] under the sole responsibility of the manufacturer [2]. The object of the declaration [3 Model/Serial Number Range] is in conformity with the provisions of the directive(s) [4] as shown by compliance with the harmonized standard(s) [5]. The technical documentation, available at the above address [2], is compiled by [6] and this declaration is approved by [7].

Year of Manufacture

Figure 1. Year of Manufacture Code



1. Year: (20__)

— T 20 A 0 0 0 1

2. Month: (January)

| | |
|-------------|--|
| Year (20__) | Month: A=January B=February C=March D=April E=May F=June G=July H=August J=September K=October L=November M=December |
|-------------|--|

*Models: QCXD1 and QCXM2


| | |
|-----------|-----------|
| QCXD1 | QCXM2 |
| QCXD11 | QCXM11 |
| QCXD11-F | QCXM11-F |
| QCXD11-M | QCXM11-M |
| QCXD11-FM | QCXM11-FM |
| QCXD12 | QCXM12 |
| QCXD12-F | QCXM12-F |
| QCXD12-M | QCXM12-M |
| QCXD12-FM | QCXM12-FM |
| QCXD13 | QCXM13 |
| QCXD13-F | QCXM13-F |
| QCXD13-M | QCXM13-M |
| QCXD13-FM | QCXM13-FM |
| QCXD15 | QCXM15 |
| QCXD15-F | QCXM15-F |
| QCXD15-M | QCXM15-M |
| QCXD15-FM | QCXM15-FM |

[ingersollrand.com](https://www.ingersollrand.com)

© 2022 Ingersoll Rand



Documents / Resources

| | |
|---|---|
|  | <p>Ingersoll Rand INSIGHTqcx Cordless Tool Controller [pdf] User Guide 47649557001, INSIGHTqcx Cordless Tool Controller, INSIGHTqcx, Cordless Tool Controller, Tool Controller, Controller, Cordless Controller</p> |
|---|---|

References

-  [Ingersoll Rand Air Compressors, Power Tools, Lifting and Fluid Handling Products](#)