

[Skip to content](#)

Manuals+

User Manuals Simplified.



ingenuity InLighten Bouncer Nate Instruction Manual

[Home](#) » [ingenuity](#) » ingenuity InLighten Bouncer Nate Instruction Manual

Contents [hide](#)

[1 ingenuity InLighten Bouncer Nate](#)

[2 Care and Cleaning](#)

[3 Battery Information](#)

[4 FCC Statement](#)

[5 Parts List and Drawing](#)

[6 INSTALLATION](#)

[7 How can it use](#)

[7.1 Using the Recline Function](#)

[7.2 Using the Seat Restraint](#)

[8 Using the Control unit](#)

[9 Storage and Travel](#)

[10 Documents / Resources](#)

[10.1 References](#)

[11 Related Posts](#)

ingenuity™

ingenuity InLighten Bouncer Nate



IMPORTANT! KEEP FOR FUTURE REFERENCE³

WARNING

- **FALL HAZARD:** Babies have suffered skull fractures falling while in and from bouncers when not used properly.
- NEVER leave the child unattended.
- Use bouncer ONLY on the floor.
- NEVER use on an elevated surface. Only use on the floor.
- NEVER lift or carry baby in bouncer.
- NEVER lift bouncer using a toy bar as a handle. **SUFFOCATION HAZARD:** Babies have suffocated when bouncers tipped over on soft surfaces and/or when bouncers have been used as a sleep product.
- NEVER use on a bed, sofa, cushion, or other soft surface.
- Stay near and watch baby during use. This product is not safe for sleep or unsupervised use. If baby falls asleep, remove baby as soon as possible and place baby on a firm, flat sleep surface such as a crib or bassinet.

TO PREVENT FALLS AND SUFFOCATION:

- ALWAYS use restraints and adjust to fit snugly.
- STOP using bouncer when baby starts trying to sit up or has reached 20 lb (9 kg), whichever comes first.
- Never let the child sleep in this product.

- NEVER use as an infant carrier for automobile or airline travel.
- NEVER attach any additional strings or straps to product or toy bar.

IMPORTANT

- Adult assembly required.
- Please read all instructions before assembly and use of the product.
- Care should be taken in unpacking and assembly.
- Examine product frequently for damaged, missing, or loose parts.
- DO NOT use if any parts are missing, damaged, or broken.
- Contact Kids2 for replacement parts and instructions if needed. Never substitute parts.
- This product does not replace a cot or a crib. Should the child fall asleep, then it should be placed in a suitable cot or crib.

Care and Cleaning

- **Seat pad and bolster** – Remove from frame. Fasten buckles on seat restraint and seat pad.
- Fasten all hook-and-loop patches to the corresponding patch. Machine wash with cold water, gentle cycle. No bleach. Tumble dry, using low heat.
- **Toy bar and toys** – Wipe clean with a damp cloth and mild soap. Air dry.
- Do not immerse in water.
- **Frame** – Wipe the metal frame with soft, clean cloth and mild soap.

Battery Information

- The Control Unit requires (3) size C/LR14 (1.5V) alkaline batteries (not included).
- **CAUTION:** Follow the battery guidelines in this section. Otherwise, battery life may be shortened or the batteries may leak or rupture.
- Always keep batteries away from children.
- Do not mix old and new batteries.
- Do not mix alkaline, standard, or rechargeable batteries.
- Only batteries of the same or equivalent type as recommended are to be used.
- Install the batteries so that the polarity of each one matches the markings in the battery compartment.
- Do not short-circuit the batteries.
- Do not store batteries in areas that have extreme temperatures (such as attics, garages, or automobiles).
- Remove exhausted batteries from the battery compartment.
- Never attempt to recharge a battery unless it is specifically marked “rechargeable.”
- Rechargeable batteries are to be removed from the toy before being charged.
- Rechargeable batteries are only to be charged under adult supervision.
- Do not use rechargeable alkaline batteries in a Ni-Cad or Ni-MH battery charger.
- Please use the correct disposal method for batteries.
- Remove batteries before putting the product into storage for a prolonged period of time.
- Weak batteries cause erratic product operation, including distorted sound, dimming or failed lights, and slow or non-working motorized parts. Because each electrical component requires a different operating voltage, replace the batteries when any function fails to operate.
- Do not dispose of product or batteries in fire, batteries may explode or leak.
- This symbol indicates that the product is not to be disposed of in household waste as batteries contain substances that can be damaging to the environment and health. Contact local authority for recycling & collection information.

FCC Statement

CAN ICES-3 (B) / NMB-3(B)

This device complies with Part 15 of the FCC rules. Operation is subject to the following two conditions:

1. this device may not cause harmful interference, and
2. this device must accept any interference received, including interference that may cause undesired operation.

WARNING: Changes or modifications to this unit not expressly approved by the party responsible for compliance could void the user's authority to operate the equipment.

NOTE: This equipment has been tested and found to comply with the limits for a Class B digital device, pursuant to Part 15 of the FCC Rules. These limits are designed to provide reasonable protection against harmful interference in a residential installation. This equipment generates, uses and can radiate radio frequency energy and, if not installed and used in accordance with the instructions, may cause harmful interference to radio communications.

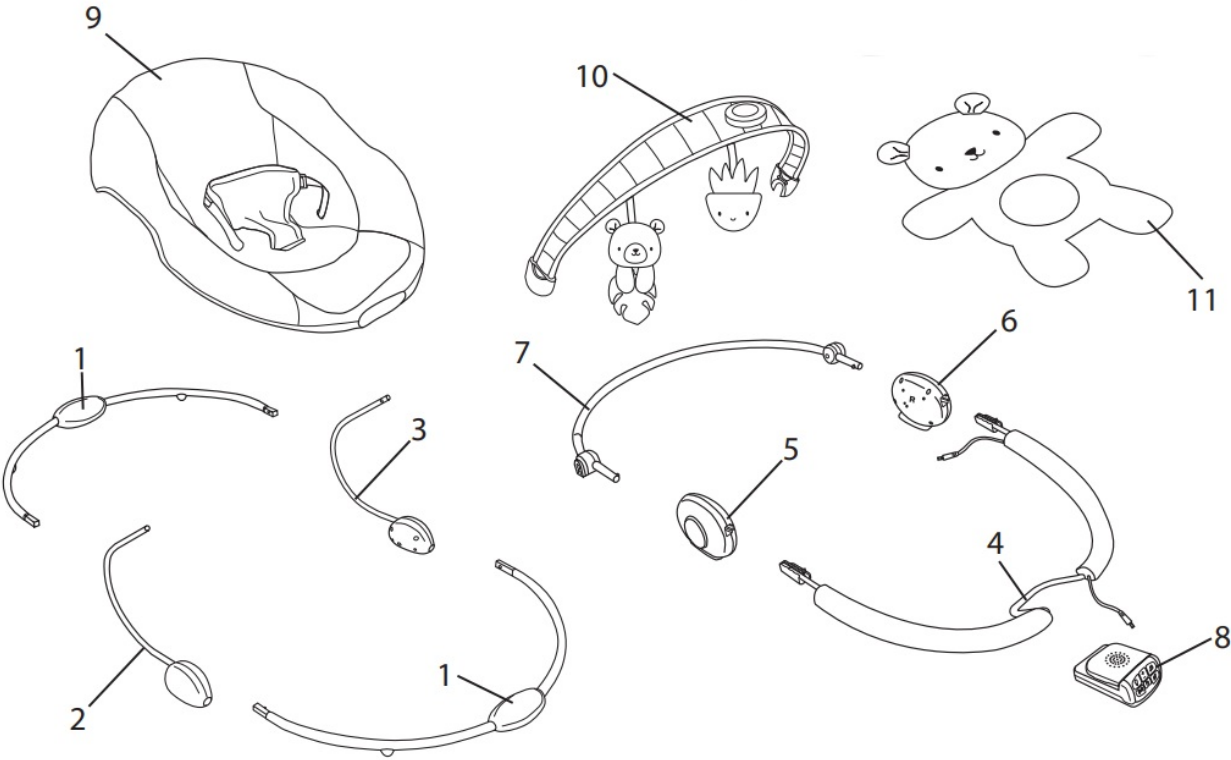
- However, there is no guarantee that interference will not occur in a particular installation.
- If this equipment does cause harmful interference to radio or television reception, which can be determined by turning the equipment off and on, the user is encouraged to try to correct the interference by one or more of the following measures:
- Reorient or relocate the receiving antenna.
- Increase the separation between the equipment and receiver.
- Connect the equipment into an outlet on a circuit different from that to which the receiver is connected.
- Consult the dealer or an experienced radio/TV technician for help

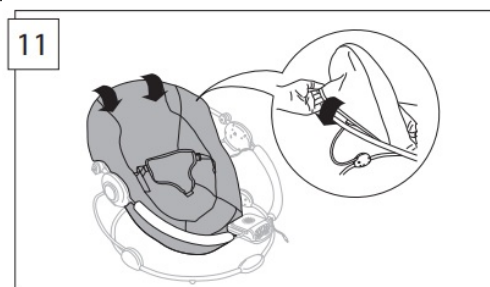
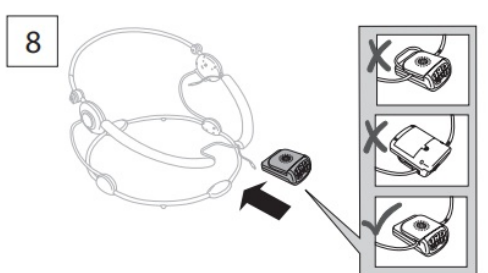
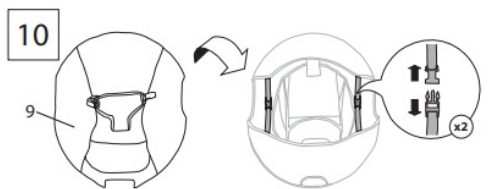
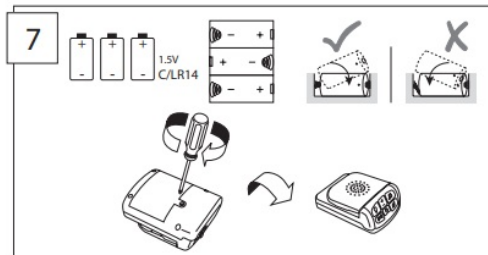
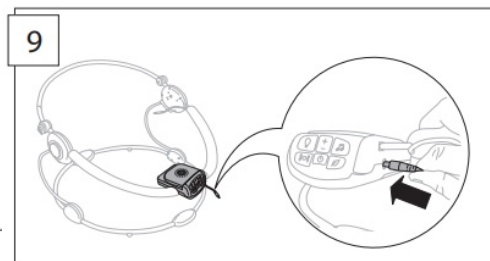
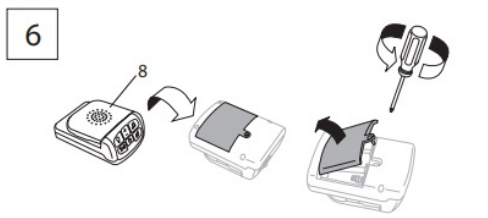
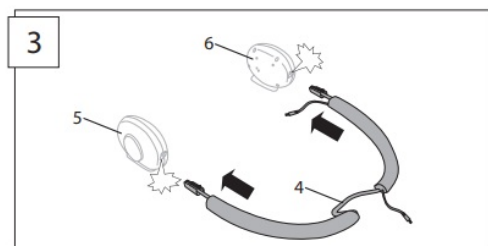
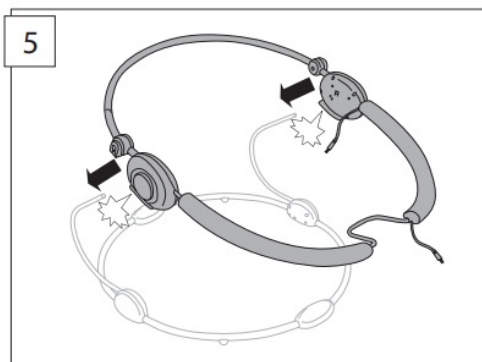
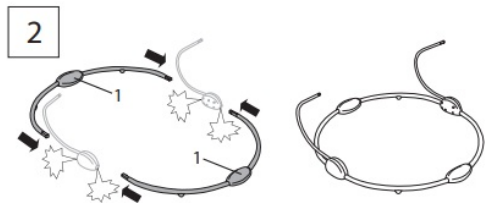
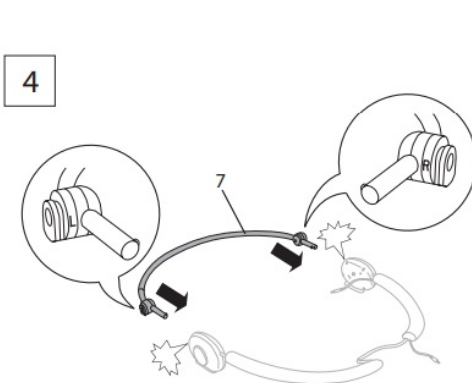
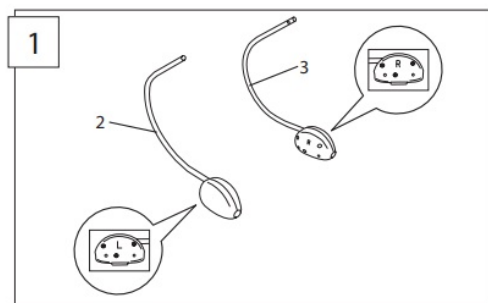
No.	Qty.	ENGLISH
		Description
1	(2)	Base frame tube
2	(1)	Left hub with wire upright
3	(1)	Right hub with wire upright
4	(1)	Footrest wire with electronic cord
5	(1)	Left recline mechanism
6	(1)	Right recline mechanism
7	(1)	Backrest tube
8	(1)	Control unit
9	(1)	Seat pad
10	(1)	Toy bar with plush toys
11	(1)	Bolster

Parts List and Drawing

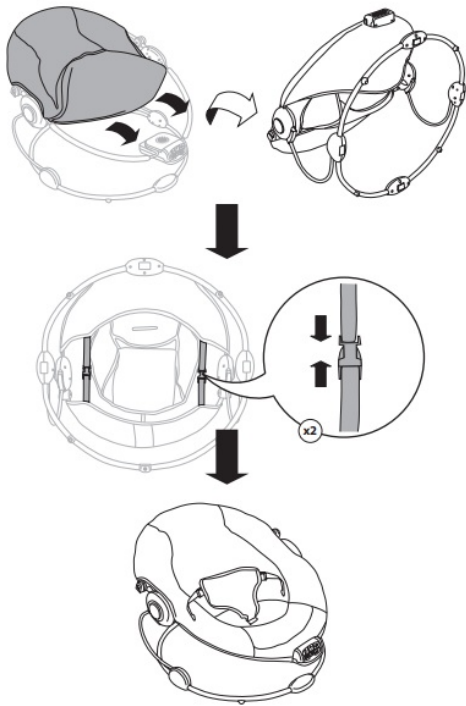


INSTALLATION

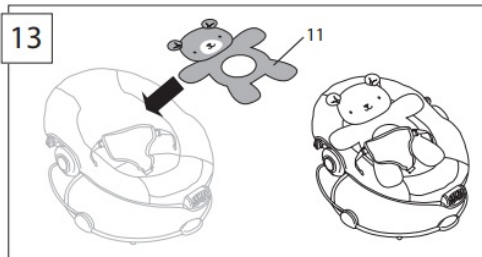




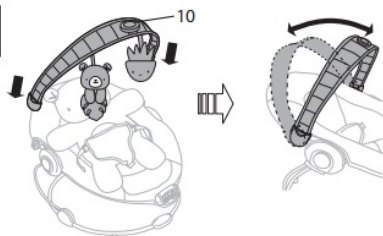
12



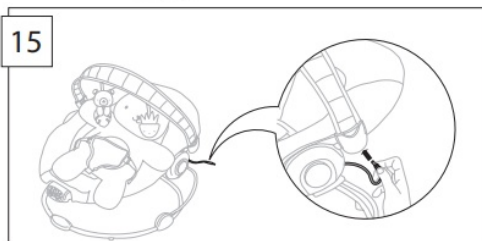
13



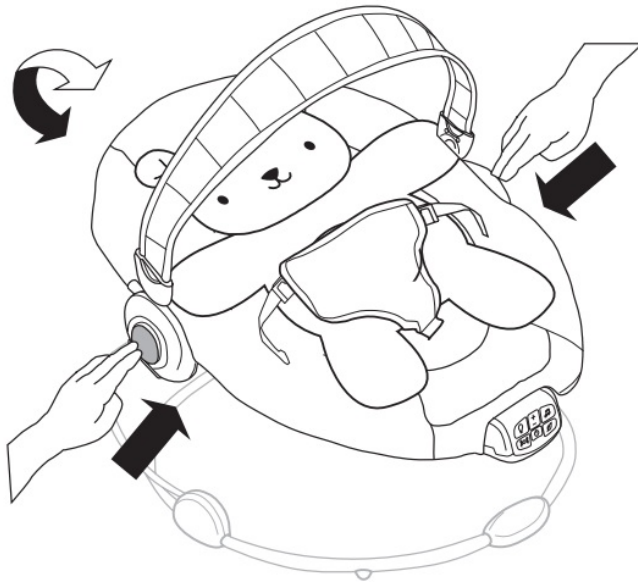
14



15

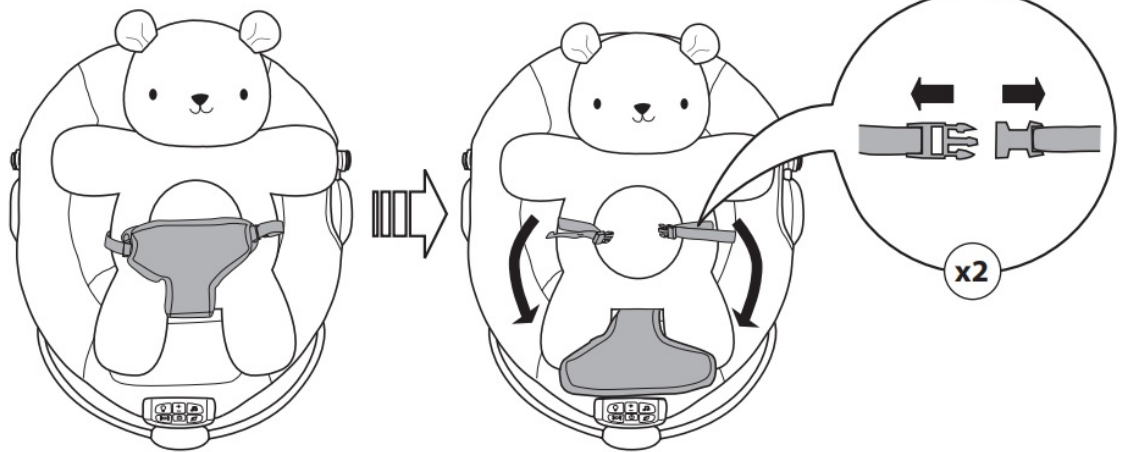


How can it use



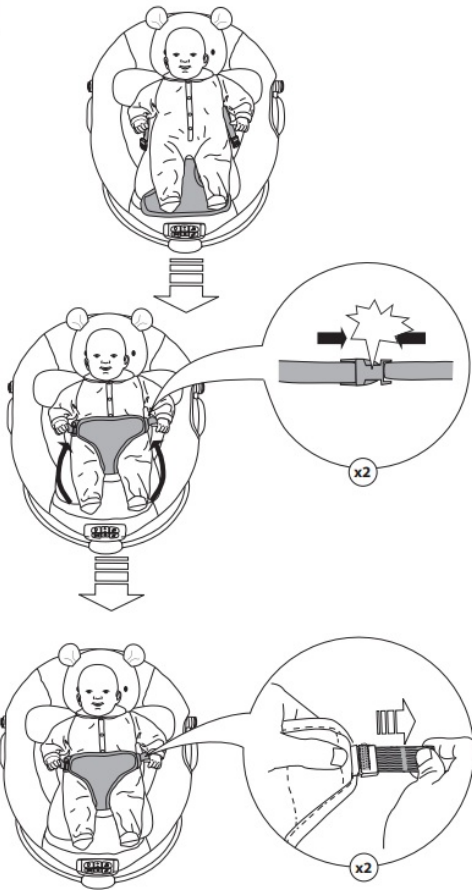
Using the Recline Function

1

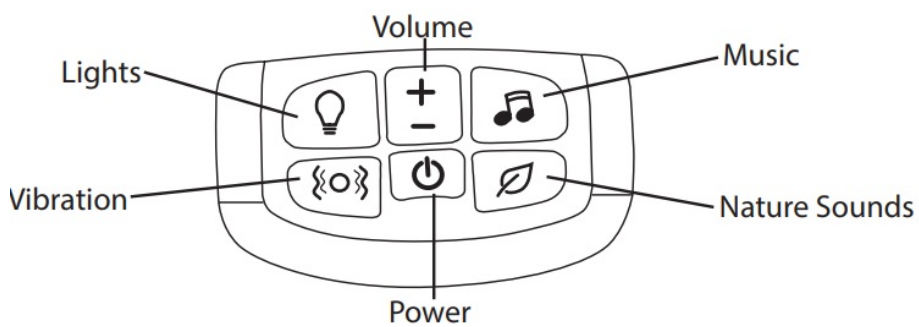


Using the Seat Restraint

2

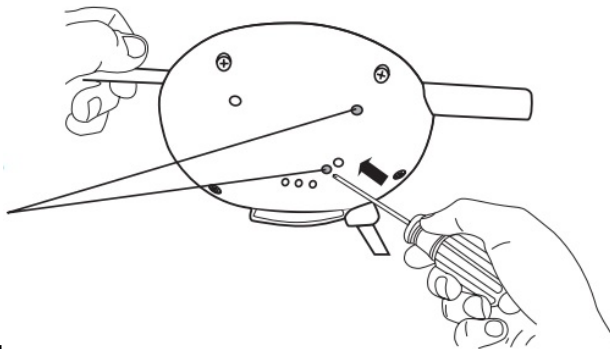


Using the Control unit





- **Power:** Press the Power button to turn ON/OFF the control unit. The power LED illuminates and the unit functions are available. When the Power button is used to turn OFF the unit, unit functions are no longer active.
- **Volume:** Press the Volume button to alternate between Low, Medium, High, and Mute volume settings.
- **Lights:** Press the Lights button to activate lights in the toy bar. After 30 minutes, the lights will stop automatically (time out). If the lights are activated during nature sounds or music playback, the lighting timer syncs with the sound playback timer.
- **Music:** Press the Music button to alternate between music and mute settings. Music plays for approximately 30 minutes before time out.
- **Vibration:** Press the Vibration button to turn ON/OFF the vibration function. Vibration functions for approximately 30 minutes before time out.
- **Nature Sounds:** Press the Nature Sounds button to alternate between nature sounds and mute settings. Nature sounds play for approximately 30 minutes before time out.

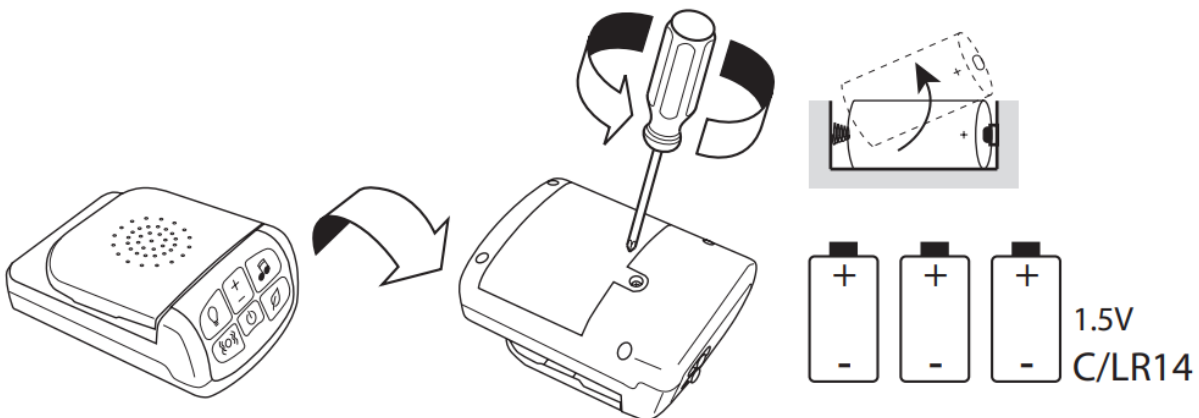


Storage and Travel

Release button

To disassemble the bouncer for storage:

- Use a small Phillips screwdriver to depress the release button on the inside of each connecting hub on the bouncer.
- Remove the footrest tube and base frame tubes from each connecting hub.



- Find us on Facebook and Instagram @ingenuitybaby
- Toys Activity Gym
- ingenuitybaby.com
- MANUFACTURED FOR
- ©2022 KIDS2, INC. www.kids2.com/help

Documents / Resources



InLighten Bouncer Nate, InLighten Bouncer, Bouncer Nate, Bouncer

- [!\[\]\(e4376d714e4ca634c1d57a59b90232ef_img.jpg\) Ingenuity™ – Kids2 Inc](#)
- [!\[\]\(942144b15c57fbca0d26bef564e91049_img.jpg\) Kids2 Contact Us – Kids2 Inc](#)

- home
- privacy