

ingenuity 12903-MEES-WS 2 In 1 Activity Jumper and Table Instruction Manual



Contents

- [1 12903-MEES / WS](#)
- [2 Spring & Sprout™ 2-in-1 Activity Jumper & Table – First Forest™](#)
 - [2.1 IMPORTANT! KEEP FOR REFERENCE](#)
 - [2.1.1 TO PREVENT SERIOUS INJURY OR DEATH:](#)
 - [2.1.2 FALL HAZARD:](#)
 - [2.1.3 STRANGULATION HAZARD:](#)
 - [2.2 Battery Information](#)
 - [2.3 Care and Cleaning](#)
 - [2.3.1 Parts List](#)
 - [2.4 Bear Toy Station Operation](#)
 - [2.5 Adjusting Bounce Pad Height](#)
 - [2.6 Removing the seat pad for cleaning](#)
 - [2.7 Removing of batteries for Bear Toy Station](#)
 - [2.8 Activity Table mode with Toy Storage](#)
 - [2.9 FCC Statement / CAN ICES-3 \(B\) / NMB-3\(B\)](#)
 - [2.9.1 ingenuitybaby.com](#)
- [3 Documents / Resources](#)
 - [3.1 References](#)
- [4 Related Posts](#)



**Spring & Sprout™
2-in-1 Activity Jumper & Table – First Forest™**

Activity Jumper

ingenuitybaby.com

IMPORTANT! KEEP FOR REFERENCE



WARNING

TO PREVENT SERIOUS INJURY OR DEATH:

- Use the product **ONLY** if the child meets **ALL** of the following conditions:
 - ... Is at least 6 months of age.
 - ... Can sit up unassisted.
 - ... Is less than 30" tall (76.2 cm).
 - ... Weighs less than 25 lbs. (11 kg).
- **DO NOT** use the product in dangerous conditions or situations:
 - **DO NOT** allow children who can stand or walk on their own to sit in the seat of the product.
 - **ALWAYS** keep child in view while the child is in product. Never leave child unattended.
 - **NEVER** move the unit while the child is in the seat.
 - **DO NOT** add additional strings or straps to product.
 - **DO NOT** use any hardware or parts other than that supplied.

FALL HAZARD:

Babies can FALL from unit resulting in head injuries.

- NEVER leave child unattended. ALWAYS keep child in view while the child is in product.
- NEVER use near stairs.
- To avoid tip over, place the product on a flat, level surface.
- DO NOT place the product on an elevated surface.
- A child's movement can slide the product.
- DO NOT place baby in the toy storage bag. The toy storage bag is not a seat.
- REMOVE bounce pad in activity table mode. DO NOT allow child to stand, jump, or play on bounce pad in activity table mode.

STRANGULATION HAZARD:

Strings can cause STRANGULATION.

- DO NOT place items with a string around child's neck, such as hood strings or pacifier cords.
- DO NOT suspend strings over product or attach strings to toys.
- For indoor use only.

IMPORTANT

- Adult assembly required.
- Please read all instructions before assembly and use.
- Care should be taken in unpacking and assembly.
- Examine product frequently for damaged, missing, or loose parts.
- DO NOT use if any parts are missing, damaged, or broken.
- Contact Kids2 for replacement parts and instructions if needed. Never substitute parts.

Battery Information

The product requires (2) size AA (LR6) alkaline batteries (not included).



CAUTION: Follow the battery guidelines in this section. Otherwise, battery life may be shortened, or the batteries may leak or rupture.

- Always keep batteries away from children.
- Do not mix old and new batteries.
- Do not mix alkaline, standard, or rechargeable batteries.
- Only batteries of the same or equivalent type as recommended are to be used.
- Install the batteries so that the polarity of each one matches the markings in the battery compartment.
- Do not short-circuit the batteries.
- Do not store batteries in areas that have extreme temperatures (such as attics, garages, or automobiles).
- Remove exhausted batteries from the battery compartment.

- Never attempt to recharge a battery unless it is specifically marked “rechargeable.”
- Rechargeable batteries are to be removed from the toy before being charged.
- Rechargeable batteries are only to be charged under adult supervision.
- Do not use rechargeable alkaline batteries in a Ni-Cad or Ni-MH battery charger.
- Please use the correct disposal method for batteries.
- Remove batteries before putting the product into storage for a prolonged period of time.
- Weak batteries cause erratic product operation, including distorted sound, dimming or failing light, and slow or non-working motorized parts. Because each electrical component requires a different operating voltage, replace the batteries when any function fails to operate.
- Do not dispose of product or batteries in fire, batteries may explode or leak.



This symbol indicates that the product is not to be disposed of in household waste, as batteries contain substances that can be damaging to the environment and health. Contact local authority for recycling and collection information.

Care and Cleaning

- **Fabric Seat** – Machine wash the fabric seat in cold water. Use a gentle wash cycle with no bleach. Tumble dry, using low heat.
- **Plastic Parts** - Wipe clean with damp cloth and mild soap. Air dry. Do not immerse in water.
- **Toy Storage Bag** –Wipe clean with damp cloth. Air dry. Do not use machine wash.

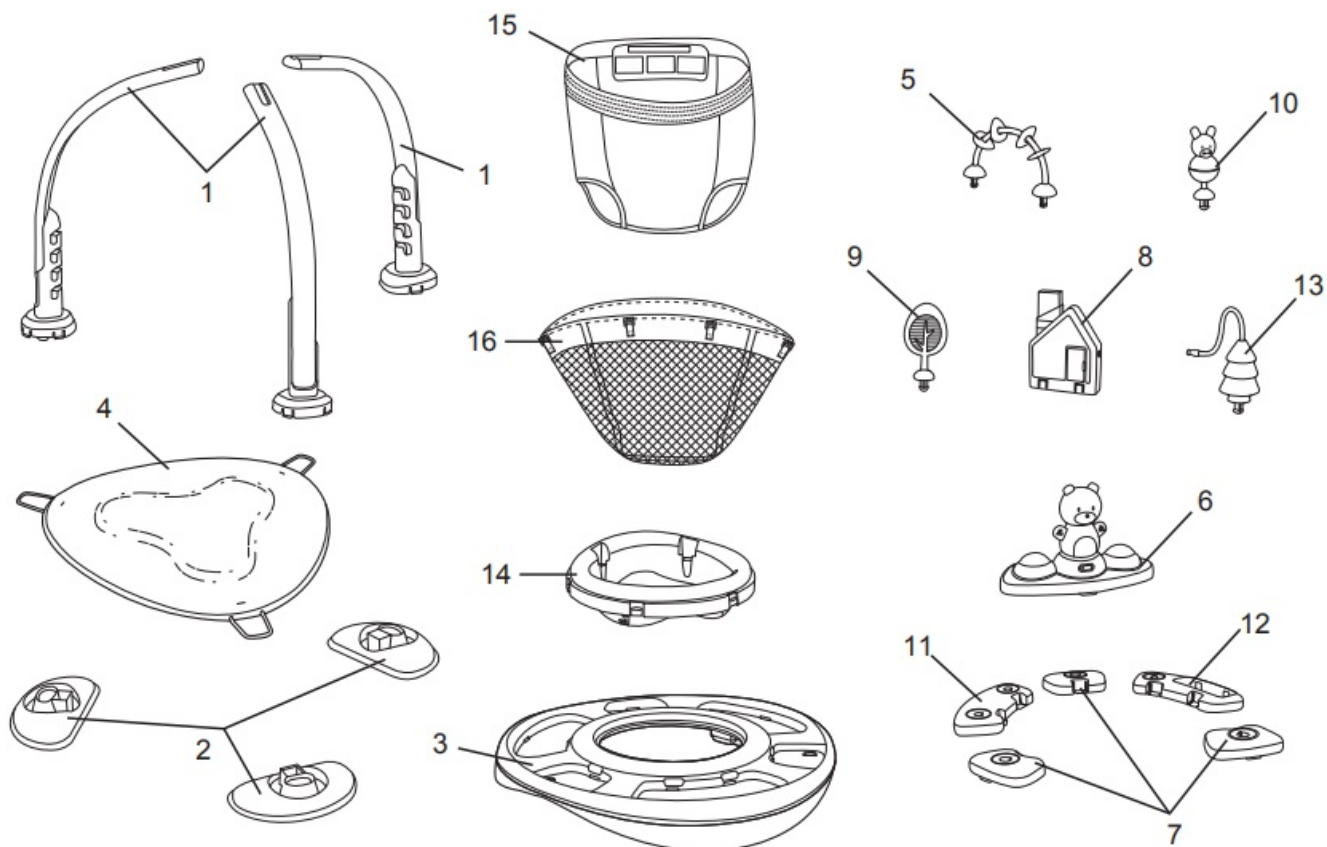
Parts List

Part No.	Qty. Cant.	Description
1	3	Leg
2	3	Foot
3	1	Table top
4	1	Bounce Pad
5	1	Bead Chaser Toy Station
6	1	Bear Toy Station
7	3	Toy Station Hub
8	1	House Toy Station
9	2	Tree Toy Station
10	1	Bunny Toy Station
11	1	Bead Chaser Toy Station Hub
12	1	House Chaser Toy Station Hub
13	1	Tree Bead Chaser Toy Station
14	1	Seat Carrier with Wheels
15	1	Seat Pad
16	1	Toy Storage Bag

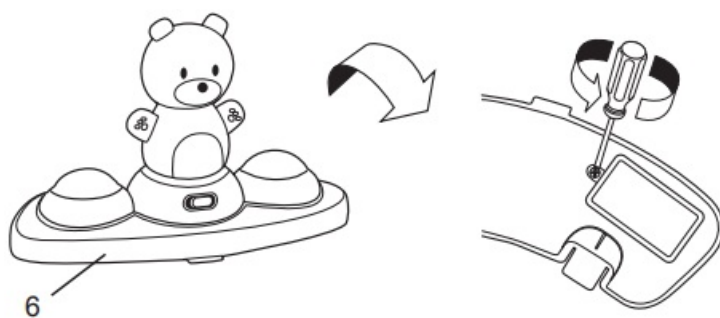
not included



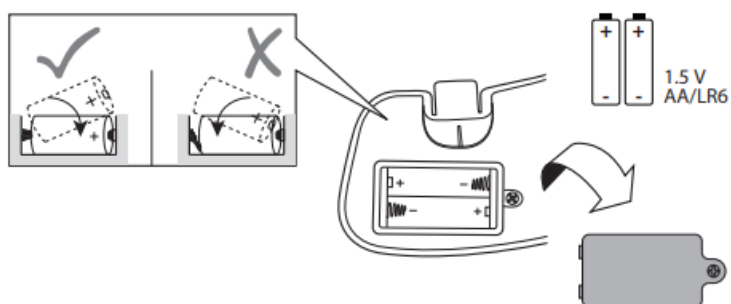
1.5 V AA/LR6



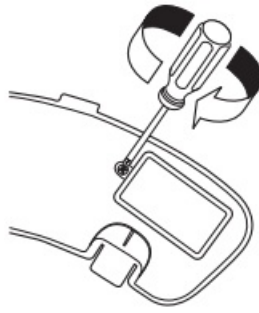
[1]



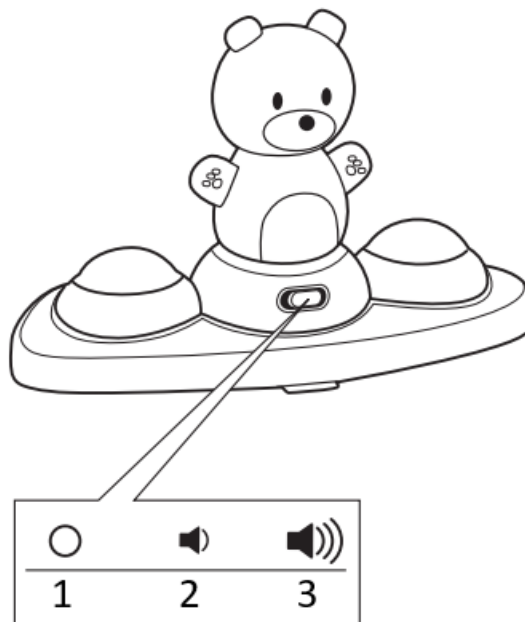
[2]



[3]

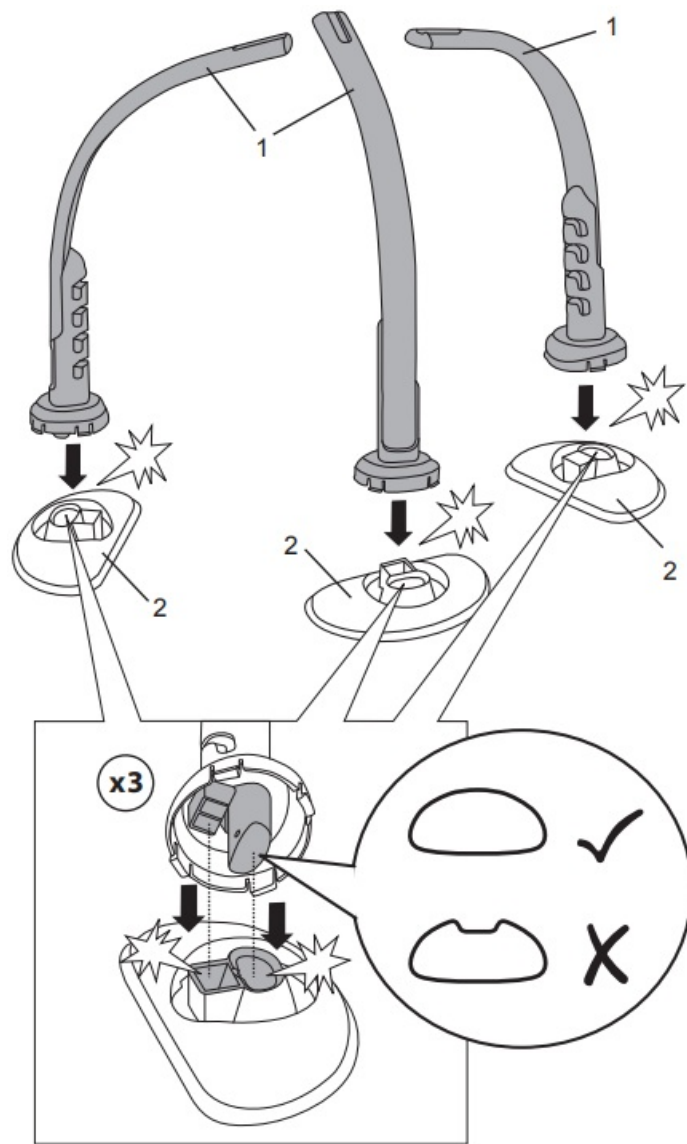


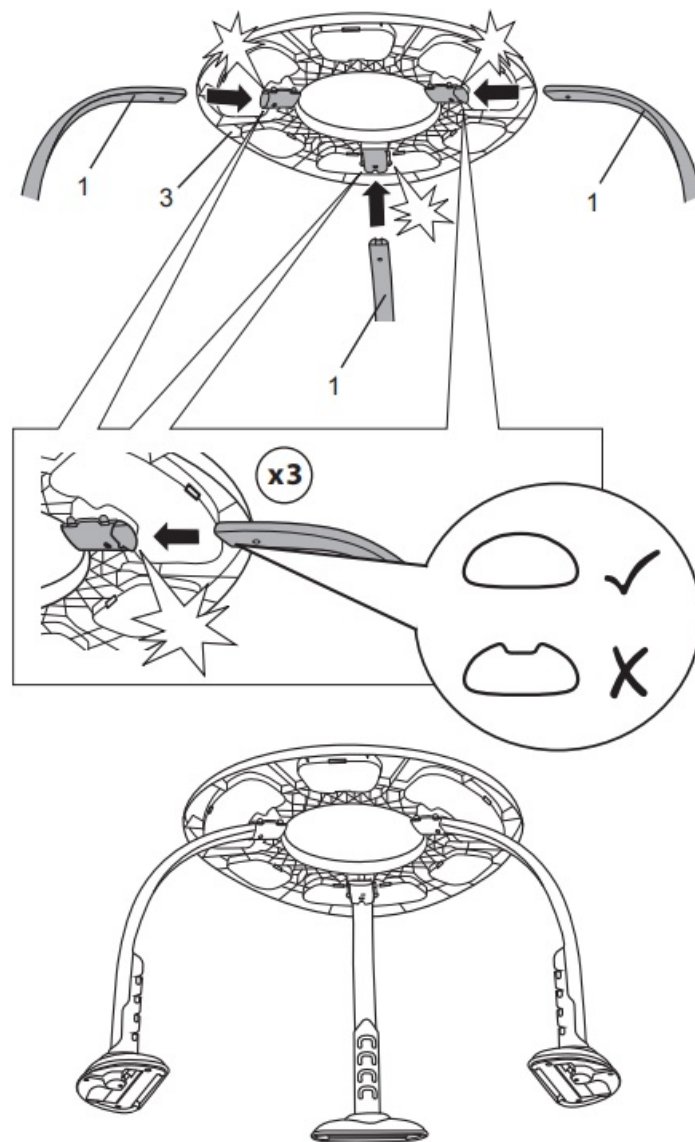
Bear Toy Station Operation

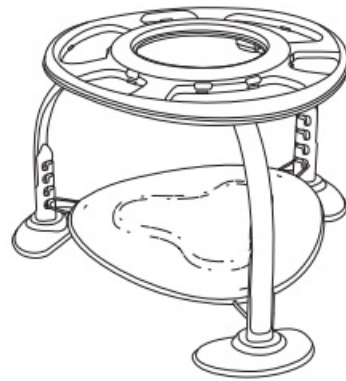
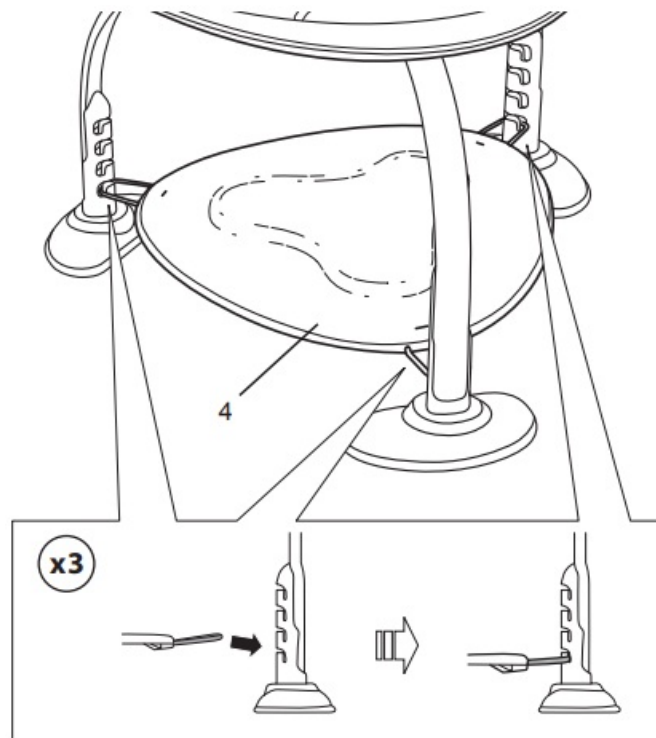


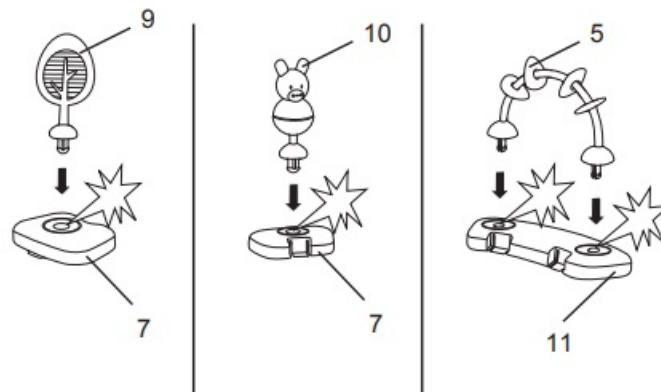
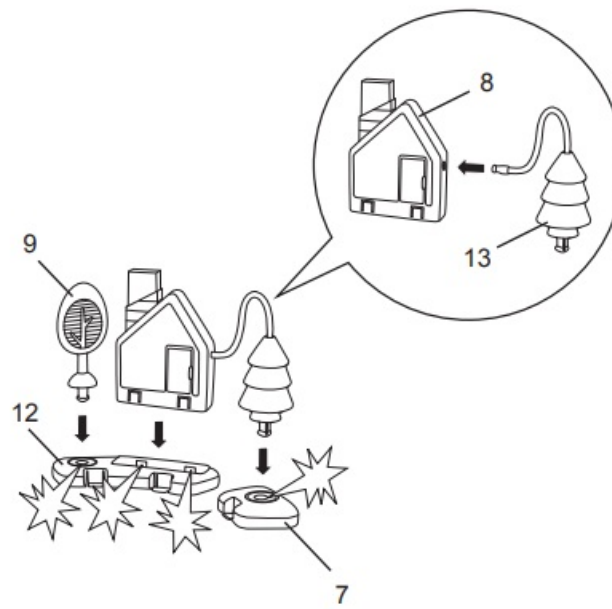
1. Off
2. Low
3. High

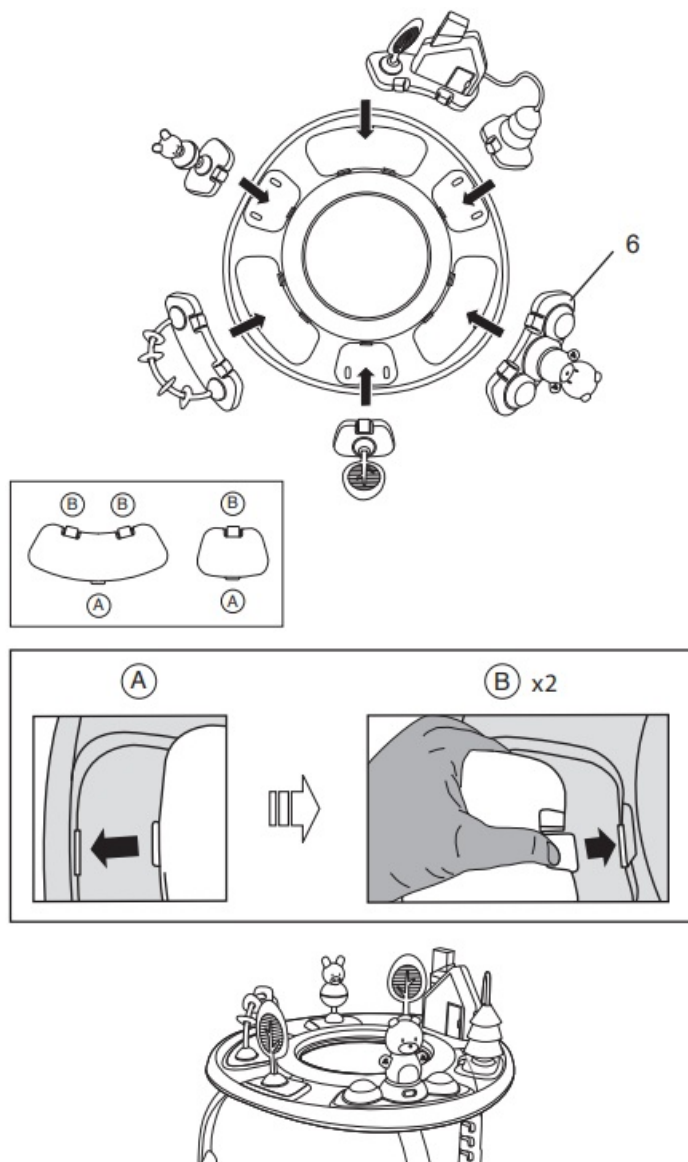
[1]



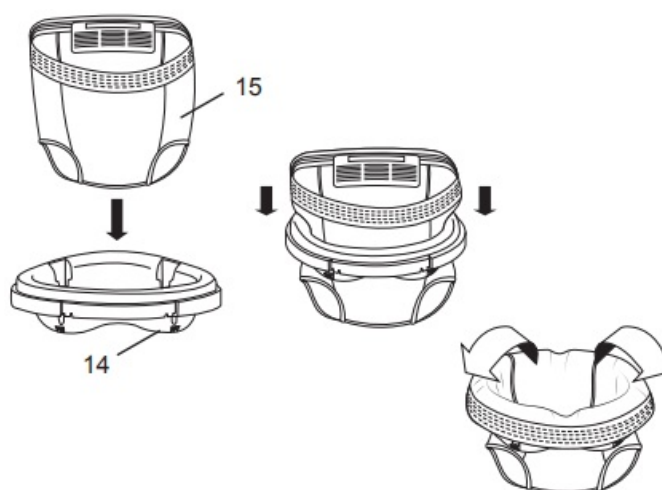




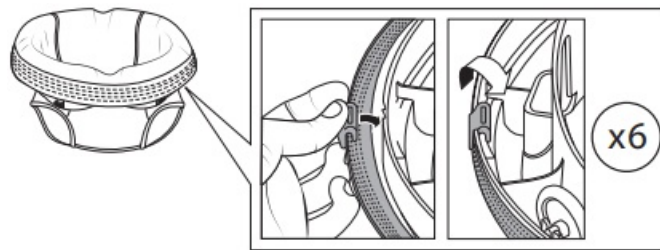




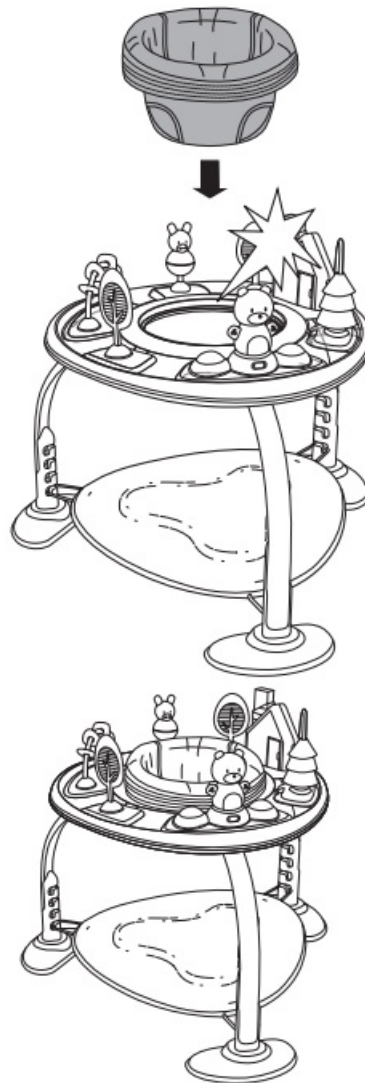
[6]



[7]

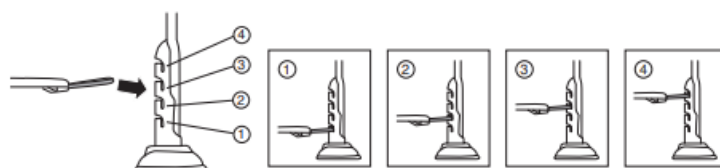


[8]



Adjusting Bounce Pad Height

[1]

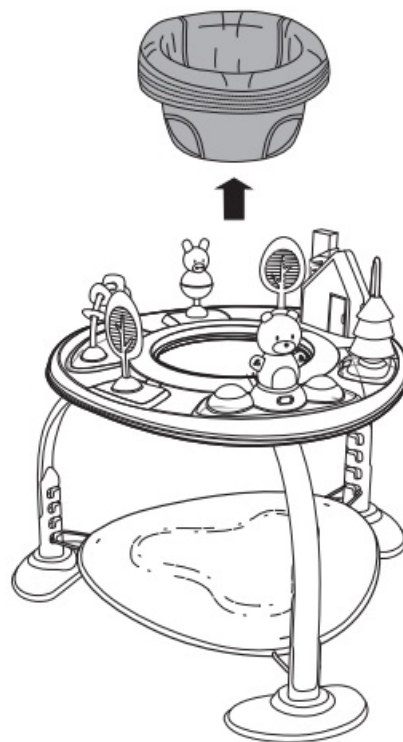


[2]

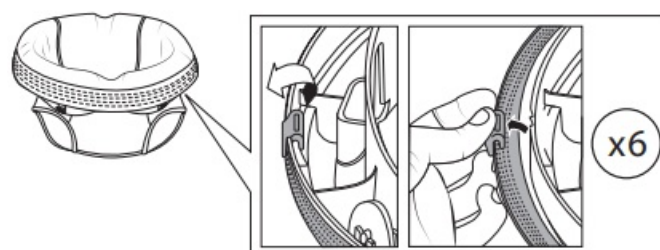


Removing the seat pad for cleaning

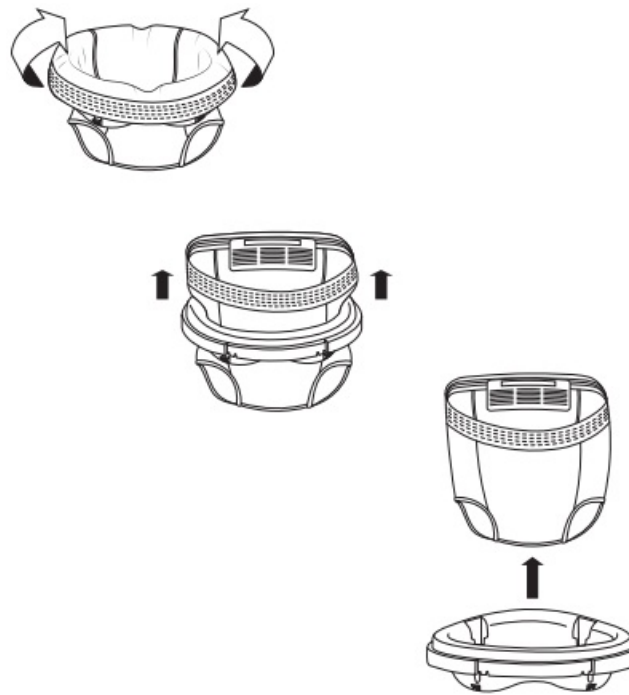
[1]



[2]

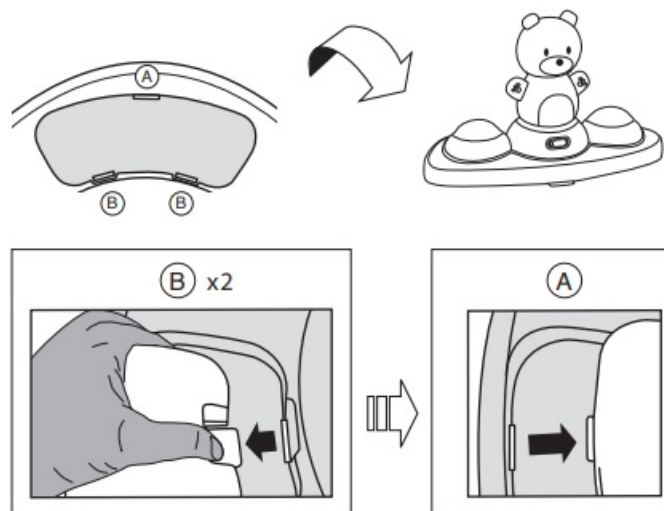


[3]

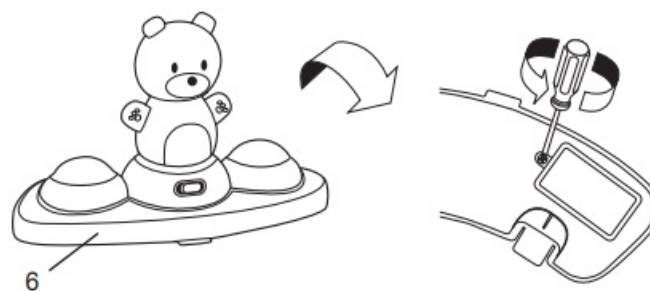


Removing of batteries for Bear Toy Station

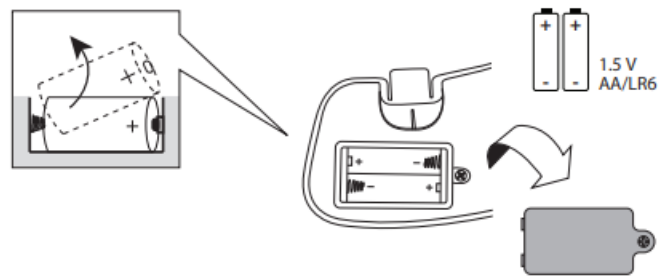
[1]



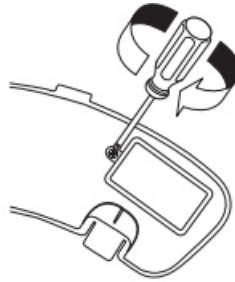
[2]



[3]

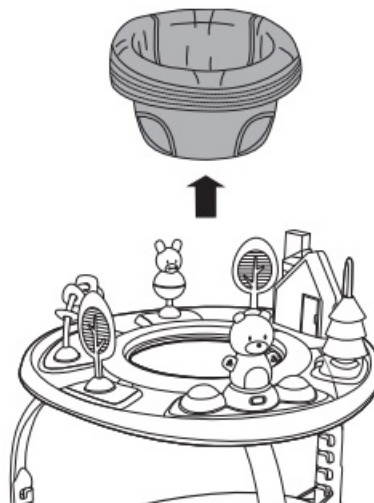


[4]

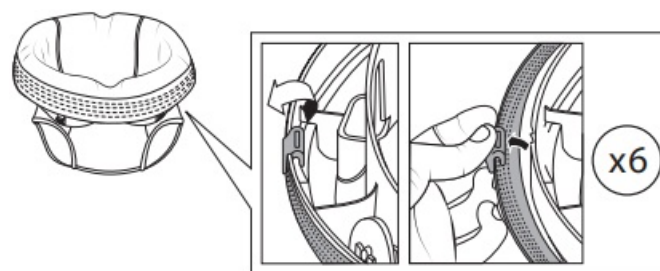


Activity Table mode with Toy Storage

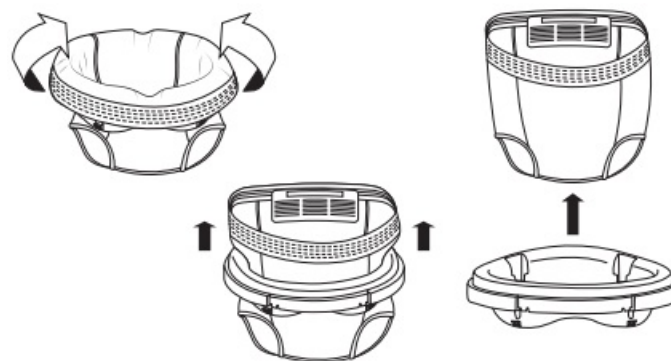
[1]



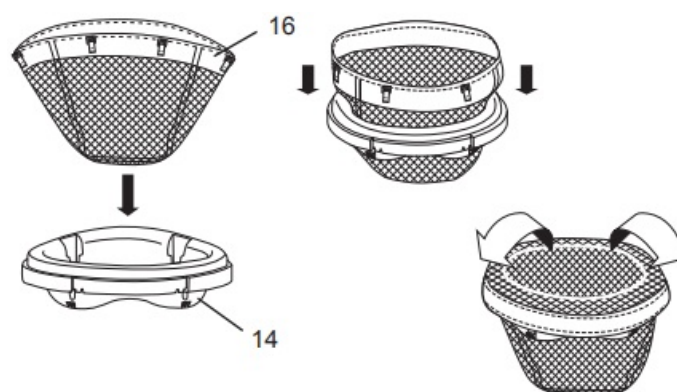
[2]



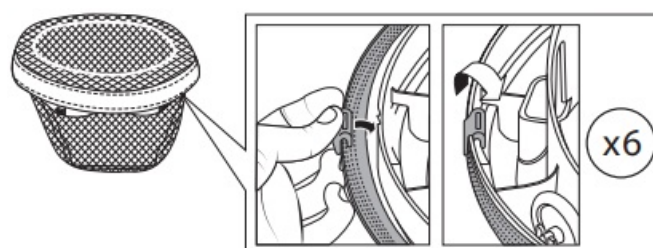
[3]



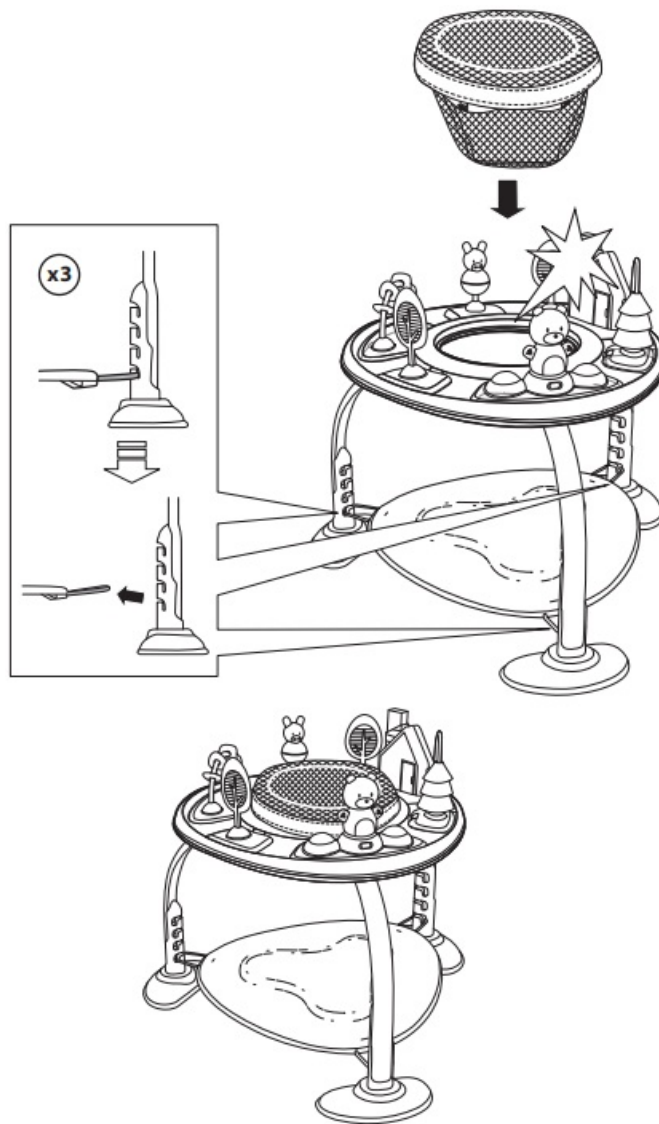
[4]



[5]



[6]



FCC Statement / CAN ICES-3 (B) / NMB-3(B)

This device complies with Part 15 of the FCC rules. Operation is subject to the following two conditions:

- 1 this device may not cause harmful interference, and
- 2 this device must accept any interference received, including interference that may cause undesired operation.



WARNING: Changes or modifications to this unit not expressly approved by the party responsible for compliance could void the user's authority to operate the equipment.



NOTE: This equipment has been tested and found to comply with the limits for a Class B digital device, pursuant to Part 15 of the FCC Rules. These limits are designed to provide reasonable protection against harmful interference in a residential installation. This equipment generates, uses and can radiate radio frequency energy and, if not installed and used in accordance with the instructions, may cause harmful interference to radio communications.

However, there is no guarantee that interference will not occur in a particular installation. If this equipment does cause harmful interference to radio or television reception, which can be determined by turning the equipment off and on, the user is encouraged to try to correct the interference by one or more of the following measures:

- Reorient or relocate the receiving antenna.
- Increase the separation between the equipment and receiver.
- Connect the equipment into an outlet on a circuit different from that to which the receiver is connected.
- Consult the dealer or an experienced radio/TV technician for help.

ingenuity™

Find us on [Facebook](#) and [Instagram](#) @ingenuitybaby

Toys • Activity Gyms • Bouncers • Rockers • Swings Activity Centers • Walkers • Door Jumpers

ingenuitybaby.com

MANUFACTURED FOR **kids2™ Kids II®** ©2024 KIDS2, LLC

www.kids2.com/help

KIDS2, LLC ATLANTA, GA USA 30305 • 1-[800-230-8190](tel:800-230-8190)

IMPORTED BY

KIDS2 CANADA CO. PO BOX 54059, RPA LAWRENCE PLAZA, TORONTO, ON. M6A 3B7

KIDS2 AUSTRALIA PTY LIMITED CASTLE HILL, NSW AUSTRALIA 2154 • (02) 9894-1855

KIDS2 JAPAN K.K. c/o **ARK Outsourcing KK** 4-3-5-704, Ebisu, Shibuya-ku, Tokyo, Japan 150-0013 • (03) 5322-6081

KIDS2 UK LTD. GROUND FLOOR, SUITE A1A, BREAKSPEAR PARK, BREAKSPEARWAY, HEMEL HEMPSTEAD, HP2 4TZ • +44 01582 816 080

KIDS2 EUROPE BV 5 KEIZERS, KEIZERSGRACHT 287, 1016 ED AMSTERDAM, NETHERLANDS • +31 20 2410934

KIDS2 US MÉXICO S.A. DE C.V. • (55) 5292-8488

MADE IN CHINA



UK CA CE

12903_6MEES/WS_IS061224

Documents / Resources

	<p>ingenuity 12903-MEES-WS 2 In 1 Activity Jumper and Table [pdf] Instruction Manual 12903-MEES-WS, 12903-MEES-WS 2 In 1 Activity Jumper and Table, 2 In 1 Activity Jumper and Table, Activity Jumper and Table, Jumper and Table, Table</p>
--	--

References

- [Ingenuity™ – Kids2, LLC](#)
- [Kids2 Contact Us – Kids2, LLC](#)
- [User Manual](#)

Manuals+. Privacy Policy

This website is an independent publication and is neither affiliated with nor endorsed by any of the trademark owners. The "Bluetooth®" word mark and logos are registered trademarks owned by Bluetooth SIG, Inc. The "Wi-Fi®" word mark and logos are registered trademarks owned by the Wi-Fi Alliance. Any use of these marks on this website does not imply any affiliation with or endorsement.