

**ingenuity 11542-ES SmartBounce Automatic Bouncer**



# ingenuity 11542-ES SmartBounce Automatic Bouncer User Manual

[Home](#) » [ingenuity](#) » ingenuity 11542-ES SmartBounce Automatic Bouncer User Manual 

## Contents

- [1 ingenuity 11542-ES SmartBounce Automatic Bouncer](#)
- [2 Specifications](#)
- [3 Product Usage Instructions](#)
- [4 FAQ](#)
- [5 Care and Cleaning](#)
- [6 Battery Information](#)
- [7 FCC Statement / CAN ICES-3 \(B\) / NMB-3\(B\)](#)
- [8 Parts List and Drawing](#)
- [9 INSTALLATION](#)
- [10 Utilización del sujetador del asiento](#)
- [11 Using the Bounce/Music Unit](#)
- [12 Storage and Travel](#)
- [13 Documents / Resources](#)
  - [13.1 References](#)

# ingenuity™

**ingenuity 11542-ES SmartBounce Automatic Bouncer**



## Specifications

- Product Name: SmartBounce Automatic Bouncer™ – Braden™
- Manufacturer: Ingenuity
- Website: [ingenuitybaby.com](http://ingenuitybaby.com)
- Battery Requirement: (3) size C/LR14 (1.5V) alkaline batteries (not included)

## Product Description:

The SmartBounce Automatic Bouncer™ – Braden™ includes the following components:

1. (1) Base frame tube
2. (1) Left Wire Upright
3. (1) Right Wire Upright
4. (1) Backrest tube
5. (1) Footrest tube
6. (1) Seat pad
7. (1) Bolster/Headrest
8. (1) Bounce/music unit
9. (1) Toy bar with toys

## Product Usage Instructions

## **Battery Installation:**

The Bounce/Music Unit requires (3) size C/LR14 (1.5V) alkaline batteries. Follow these steps to install the batteries:

1. Open the battery compartment on the Bounce/Music Unit.
2. Insert the batteries according to the polarity markings inside the compartment.
3. Close the battery compartment securely.

## **Using the Bounce/Music Unit:**

To operate the Bounce/Music Unit, follow these steps:

1. Ensure the batteries are correctly installed.
2. Press the power button to activate the unit.
3. Select the desired music or bouncing mode using the controls provided.
4. Adjust the volume as needed.
5. Monitor the unit during operation and ensure safe usage.

## **FAQ**

### **Q: What should I do if the product is not functioning properly?**

A: If you encounter any issues with the product's functionality, please contact our customer support for assistance.

### **Q: Can I wash the seat pad?**

A: Yes, the seat pad is washable. Follow the instructions on the care label for proper cleaning.

## **IMPORTANT! READ CAREFULLY AND KEEP FOR FUTURE REFERENCE**

### **WARNING**

**FALL HAZARD:** Babies have suffered skull fractures falling while in and from bouncers when not used properly.

- NEVER leave the child unattended.
- Use bouncer ONLY on the floor.
- NEVER use on an elevated surface. Only use on the floor.
- NEVER lift or carry baby in bouncer. • NEVER lift bouncer using a toy bar as a handle.

**SUFFOCATION HAZARD:** Babies have suffocated when bouncers tipped over on soft surfaces and/or when bouncers have been used as a sleep product.

- NEVER use on a bed, sofa, cushion, or other soft surface.
- Stay near and watch baby during use. This product is not safe for sleep or unsupervised use. If baby falls asleep, remove baby as soon as possible and place baby on a firm, flat sleep surface such as a crib or

bassinet.

## **TO PREVENT FALLS AND SUFFOCATION:**

- ALWAYS use restraints and adjust to fit snugly.
- STOP using bouncer when baby starts trying to sit up or has reached 20 lb (9 kg), whichever comes first.
- Never let the child sleep in this product.
- NEVER use as an infant carrier for automobile or airline travel.
- NEVER attach any additional strings or straps to product or toy bar.

## **IMPORTANT**

- Adult assembly required.
- This product contains magnets.
- Please read all instructions before assembly and use of the product.
- Care should be taken in unpacking and assembly.
- Examine product frequently for damaged, missing, or loose parts.
- DO NOT use if any parts are missing, damaged, or broken.
- Contact Kids2 for replacement parts and instructions if needed. Never substitute parts.
- This product does not replace a cot or a crib. Should the child fall asleep, then it should be placed in a suitable cot or crib.

## **Care and Cleaning**

- **Seat pad and bolster** – Remove from frame. Fasten buckles on seat restraint and seat pad. Fasten all hook-and-loop patches to the corresponding patch. Machine wash with cold water, gentle cycle. No bleach. Tumble dry, using low heat.
- **Toy bar and toys** – Wipe clean with a damp cloth and mild soap. Air dry.  
Do not immerse in water.
- **Frame** – Wipe the metal frame with soft, clean cloth and mild soap.

## **Battery Information**

The Bounce/music Unit requires (3) size C/LR14 (1.5V) alkaline batteries (not included).

**CAUTION:** Follow the battery guidelines in this section. Otherwise, battery life may be shortened or the batteries may leak or rupture. To prevent battery leaks, which can burn skin and eyes:

- Always keep batteries away from children.
- Never mix old and new batteries, or batteries of different brands or types.
- Always replace the entire set of batteries at one time.
- Do not mix alkaline, standard, or rechargeable batteries.
- Only batteries of the same or equivalent type as recommended are to be used.
- Install the batteries so that the polarity of each one matches the markings in the battery compartment.
- Do not short-circuit the batteries.

- Do not store batteries in areas that have extreme temperatures (such as attics, garages, or automobiles).
- Remove exhausted batteries from the battery compartment.
- Never attempt to recharge a battery unless it is specifically marked “rechargeable.”
- Rechargeable batteries are to be removed from the toy before being charged.
- Rechargeable batteries are only to be charged under adult supervision.
- Dispose of used batteries immediately.
- Please use the correct disposal method for batteries.
- Remove batteries before putting the product into storage for a prolonged period.
- Weak batteries cause erratic product operation, including distorted sound, dimming or failed lights, and slow or non-working motorized parts. Because each electrical component requires a different operating voltage, replace the batteries in time, batteries may explode or leak.
- This symbol indicates that the product is not to be disposed of in household waste as batteries contain substances that can be damaging to the environment and health. Contact local authority for recycling & collection information.

### **FCC Statement / CAN ICES-3 (B) / NMB-3(B)**

This device complies with Part 15 of the FCC rules. Operation is subject to the following two conditions:

1. this device may not cause harmful interference, and
2. this device must accept any interference received, including interference that may cause undesired operation.

**WARNING:** Changes or modifications to this unit not expressly approved by the party responsible for compliance could void the user’s authority to operate the equipment.

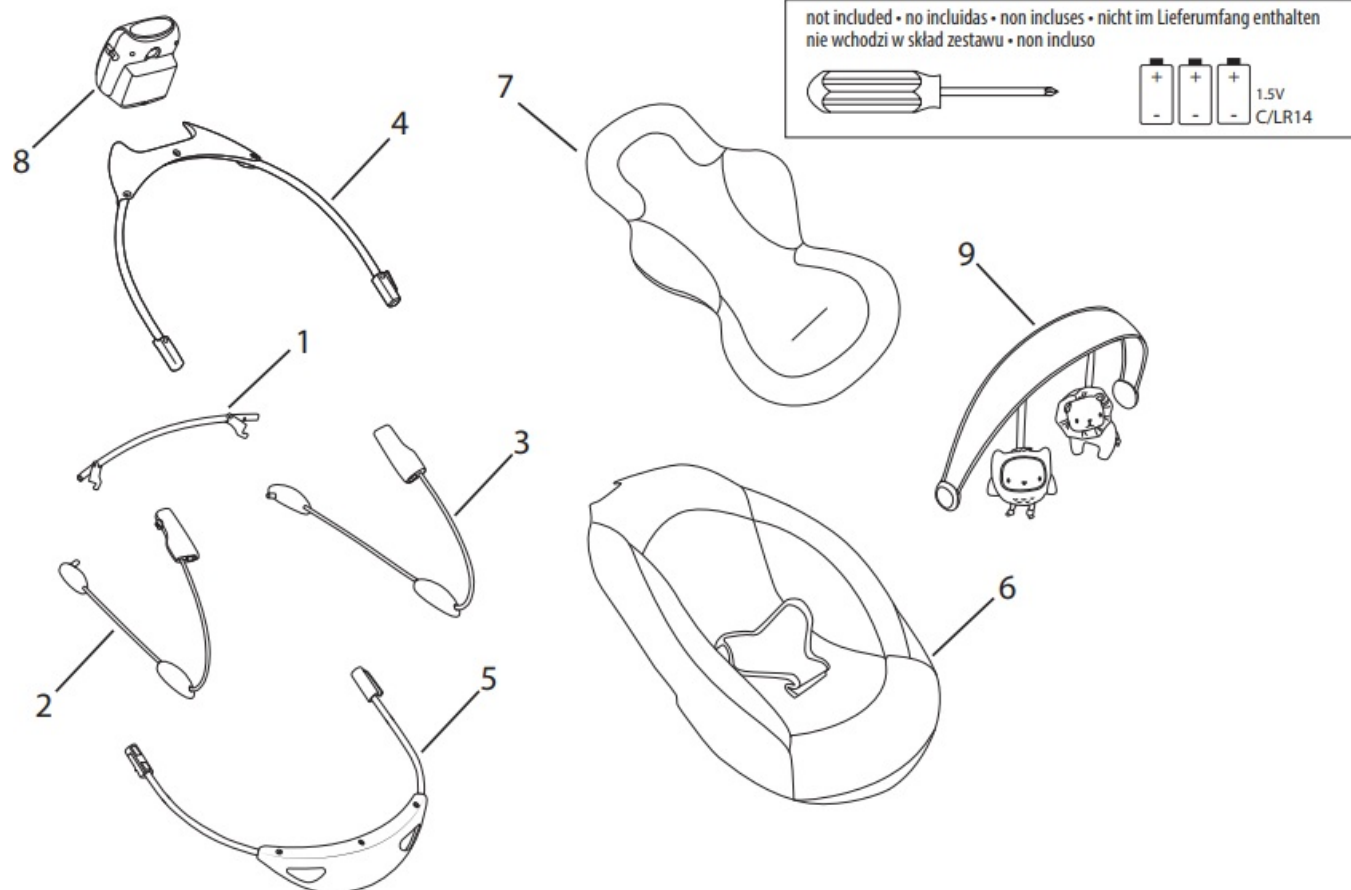
**NOTE:** This equipment has been tested and found to comply with the limits for a Class B digital device, pursuant to Part 15 of the FCC Rules. These limits are designed to provide reasonable protection against harmful interference in a residential installation. This equipment generates, uses and can radiate radio frequency energy and, if not installed and used in accordance with the instructions, may cause harmful interference to radio communications. However, there is no guarantee that interference will not occur in a particular installation. If this equipment does cause harmful interference to radio or television reception, which can be determined by turning the equipment off and on, the user is encouraged to try to correct the interference by one or more of the following measures:

- Reorient or relocate the receiving antenna.
- Increase the separation between the equipment and receiver.
- Connect the equipment into an outlet on a circuit different from that to which the receiver is connected.
- Consult the dealer or an experienced radio/TV technician for help.

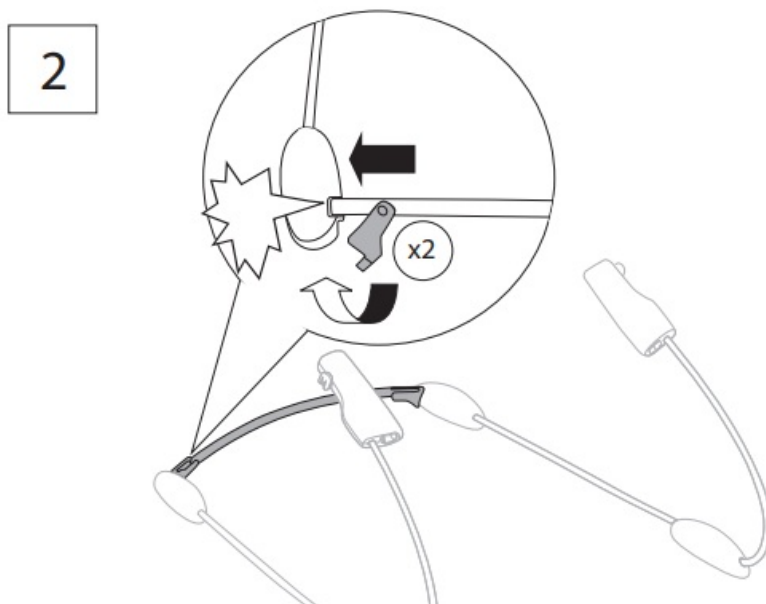
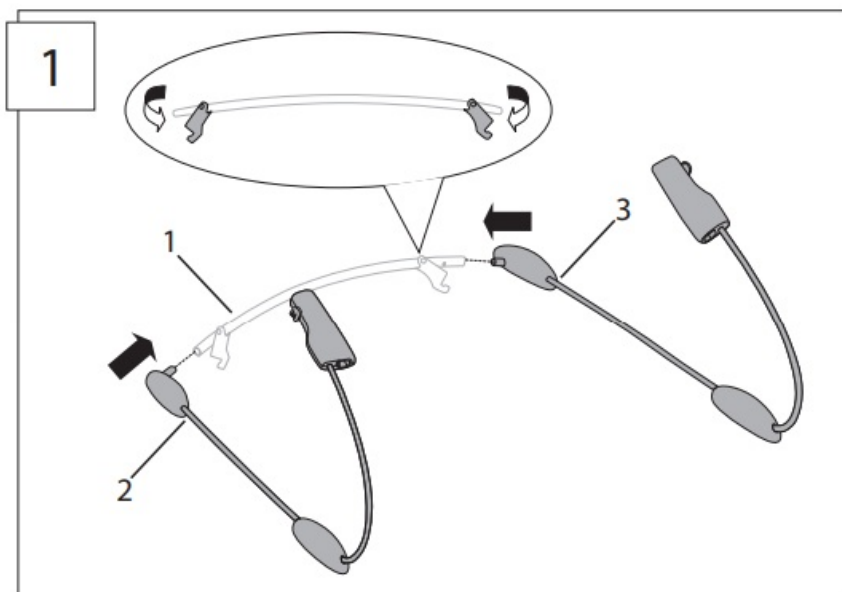
### **Parts List and Drawing**

<b>No.</b> <b>Nro.</b> <b>N°.</b> <b>Nr.</b> <b>Nr.</b> <b>N.</b>	<b>Qty.</b> <b>Cant.</b> <b>Qté.</b> <b>Anz.</b> <b>Sztuk.</b> <b>Qtà.</b>	ENGLISH
		Description
1	(1)	Base frame tube
2	(1)	Left Wire Upright
3	(1)	Right Wire Upright
4	(1)	Backrest tube
5	(1)	Footrest tube
6	(1)	Seat pad
7	(1)	Bolster/ Headrest
8	(1)	Bounce/music unit
9	(1)	Toy bar with toys

not include

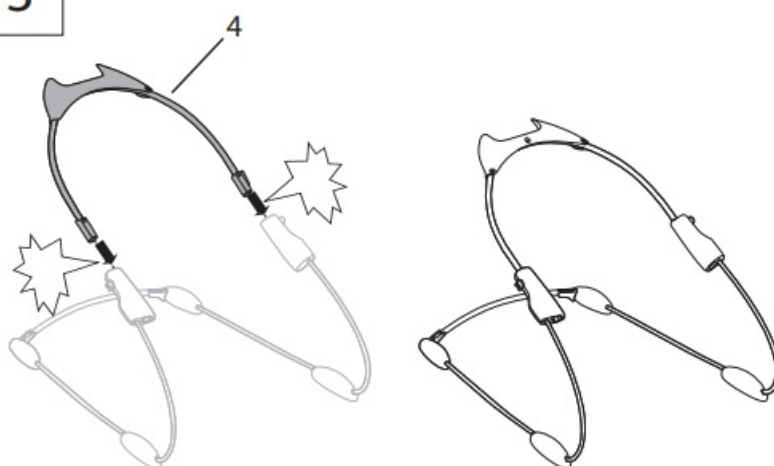


## INSTALLATION

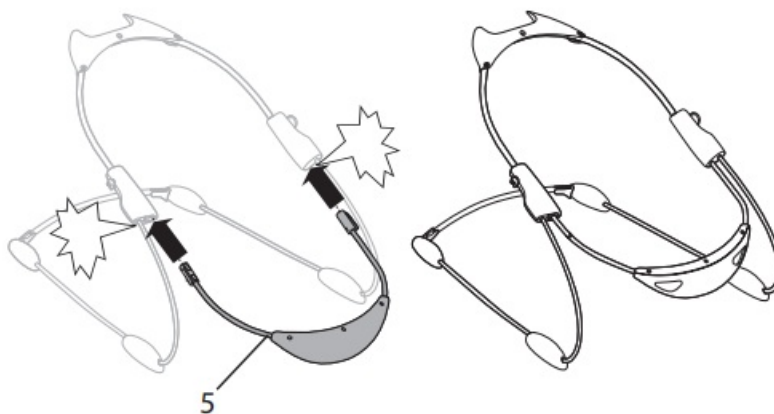


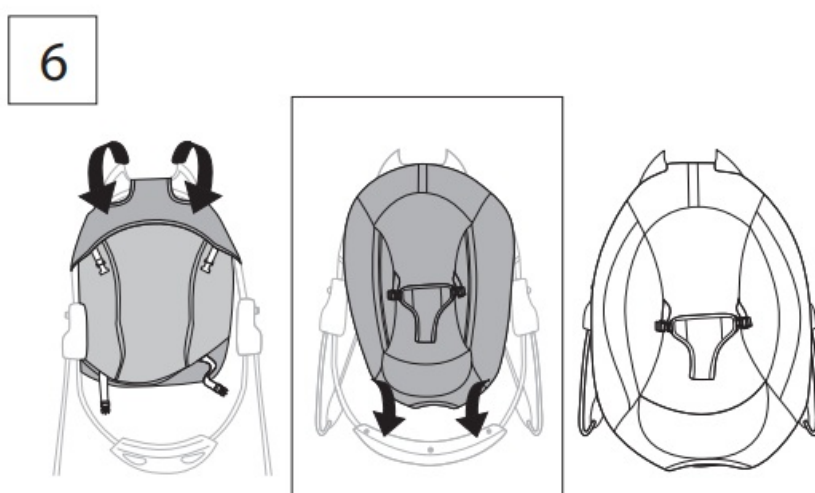
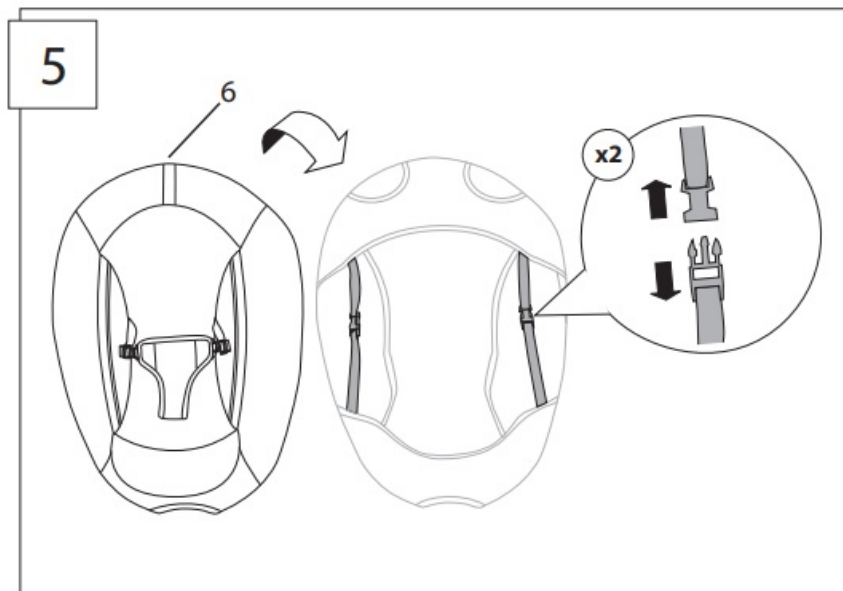


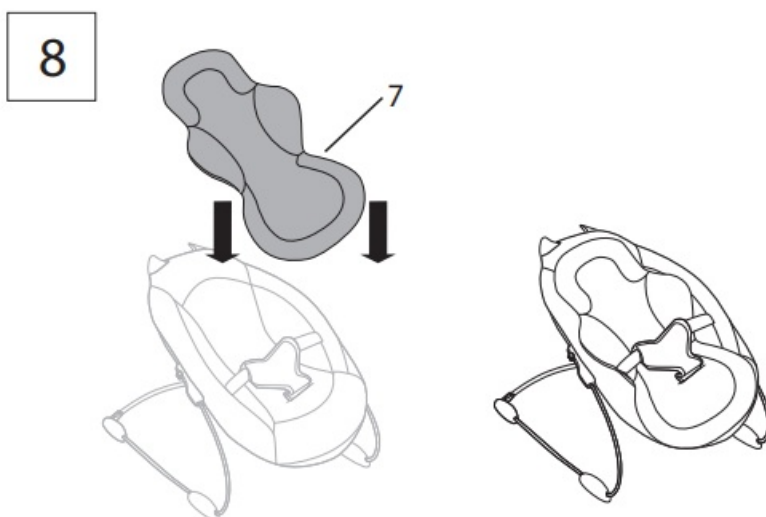
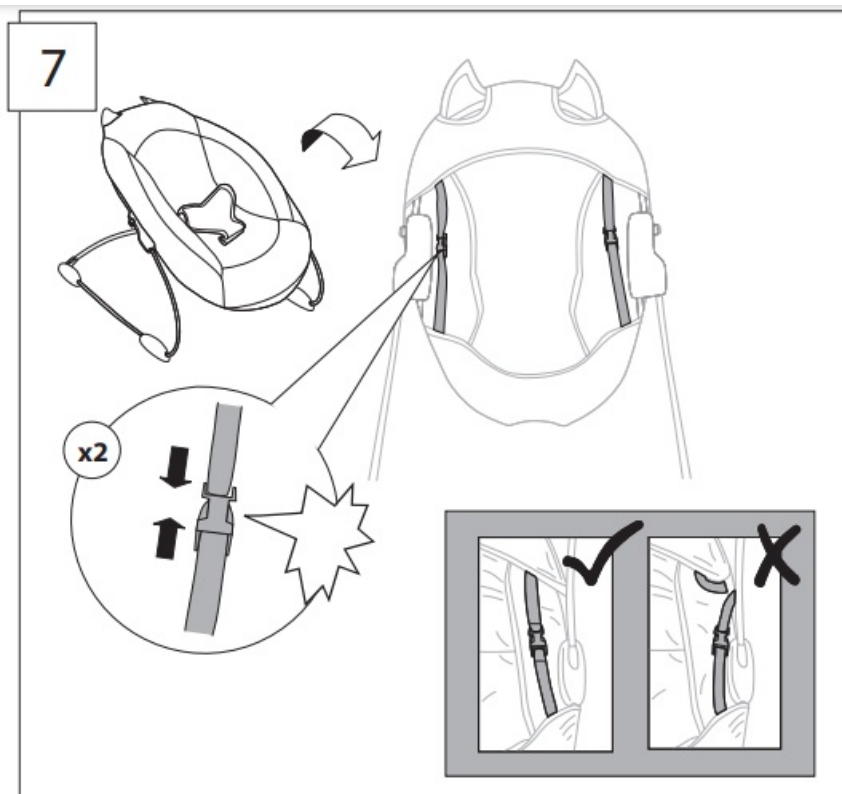
3



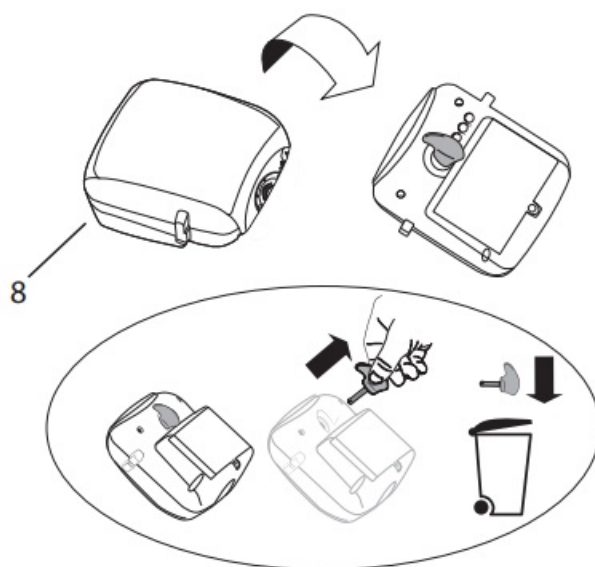
4



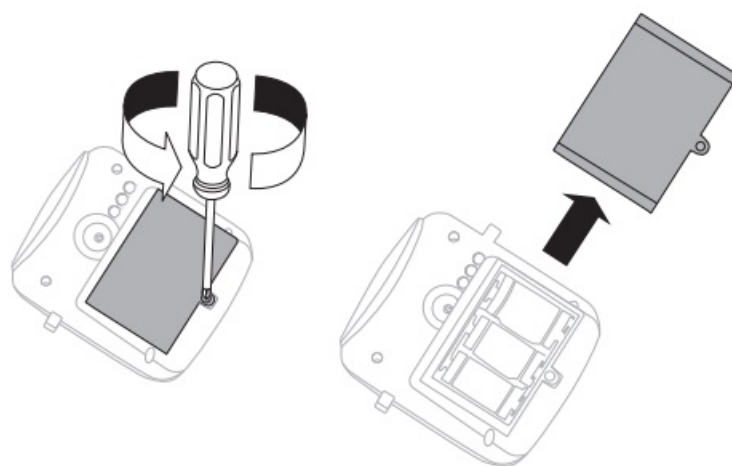




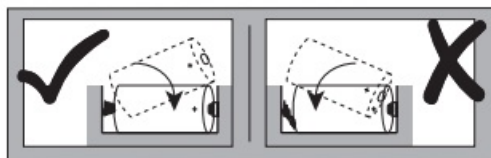
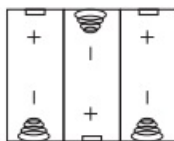
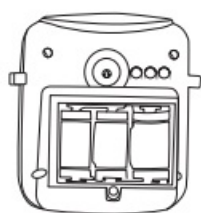
9



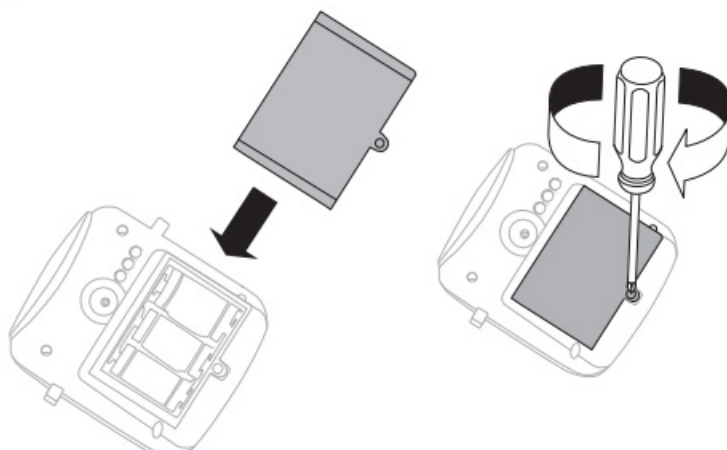
10

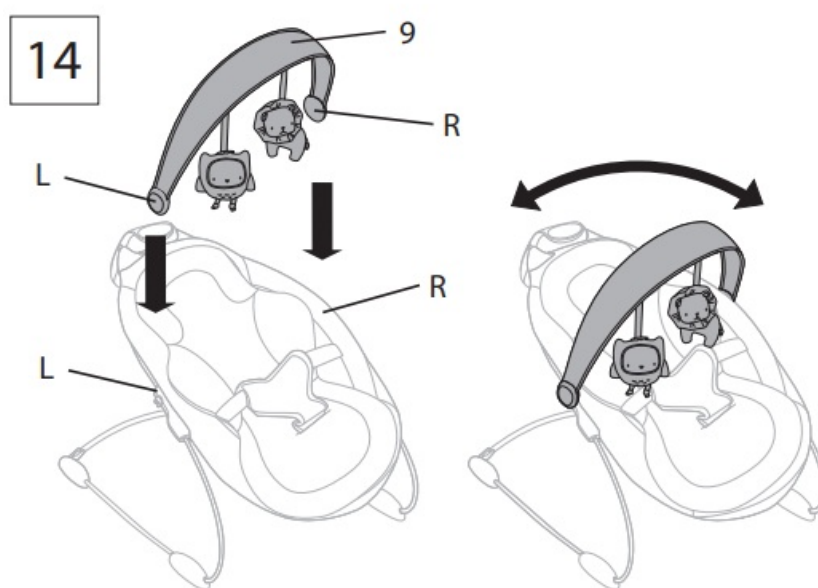
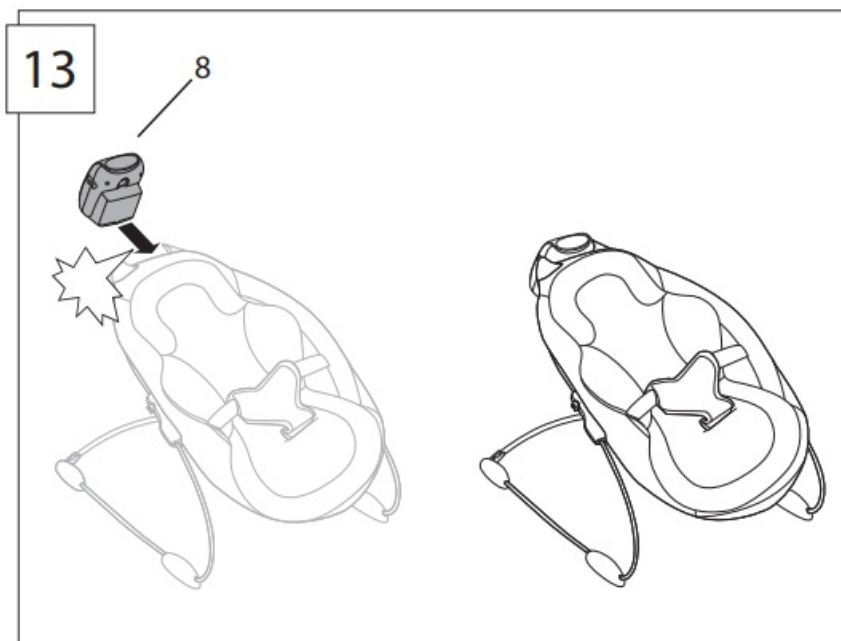


11

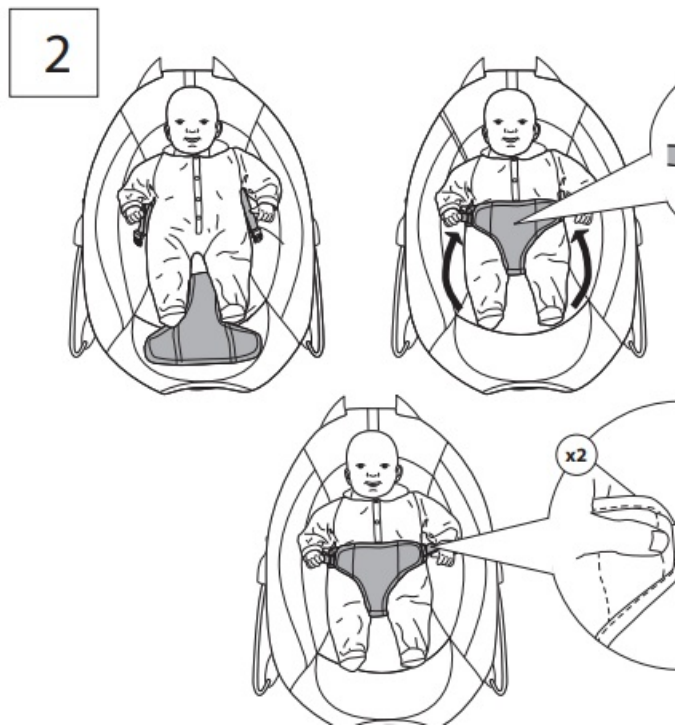
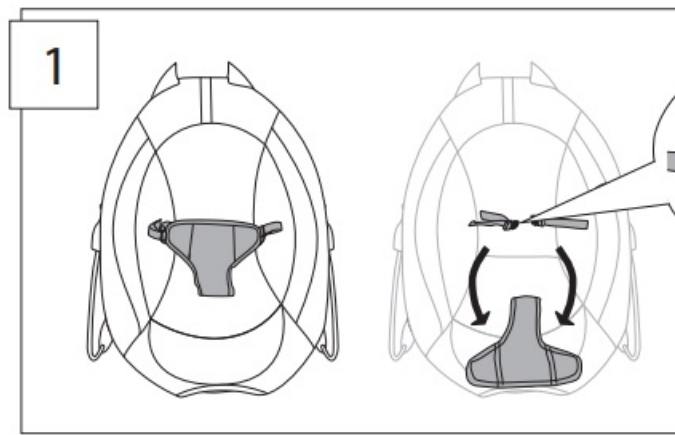


12



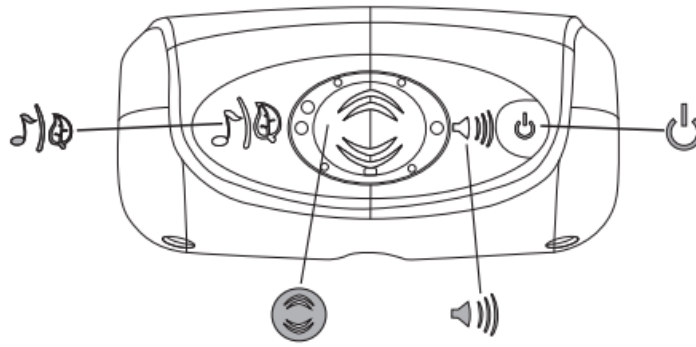


**Utilización del sujetador del asiento**



**Using the Bounce/Music Unit**

### Using the Bounce/Music Unit



**Power Button** – Press the Power Button to turn ON the Bounce/music Unit. The amber power LED illuminates and the bounce/music functions are available. After 30 minutes, the Bounce/music Unit will stop automatically (time out). If you turn OFF the unit using the Power Button, the bouncer and music/sound functions are no longer active.



**To use the Bounce Function:** Press the Bounce Button. The left, green LED will illuminate, indicating the bounce function is on low speed mode. If you press the Bounce Button twice the left and right green LEDs will illuminate, indicating the bounce function is on high speed mode. The bounce function operates at two speeds and automatically turns OFF after 30 minutes of continuous operation. Pressing the Bounce Button three times causes the Bounce function to go into standby mode.



**To use the Music/Sounds Function:** Press the Music/Sound Button to alternate between Music and Nature Sounds. When the music/sounds function is activated, the volume level will be the one previously selected. The Music setting will play the song list of eight melodies two times. The first melody is randomly selected. The Nature Sounds setting includes three sounds. Any selected sound will play for approximately 20 minutes. Auto-shutoff occurs after the last melody or when nature sound play ends. Press the Music/sound Button to activate music or nature sounds again.

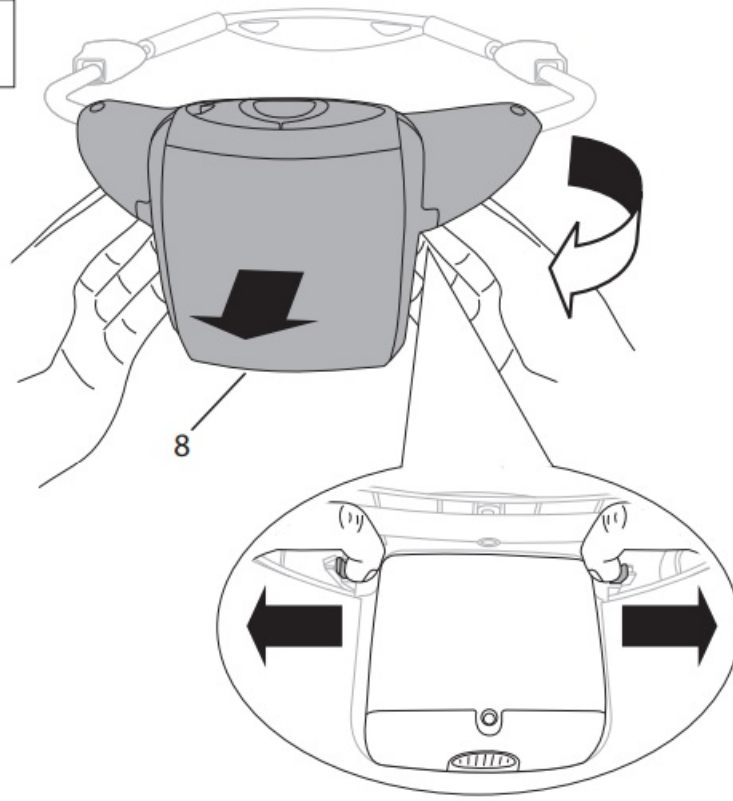


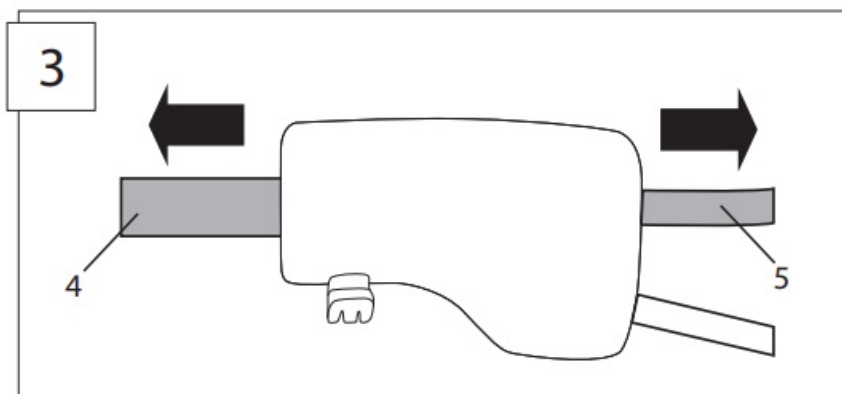
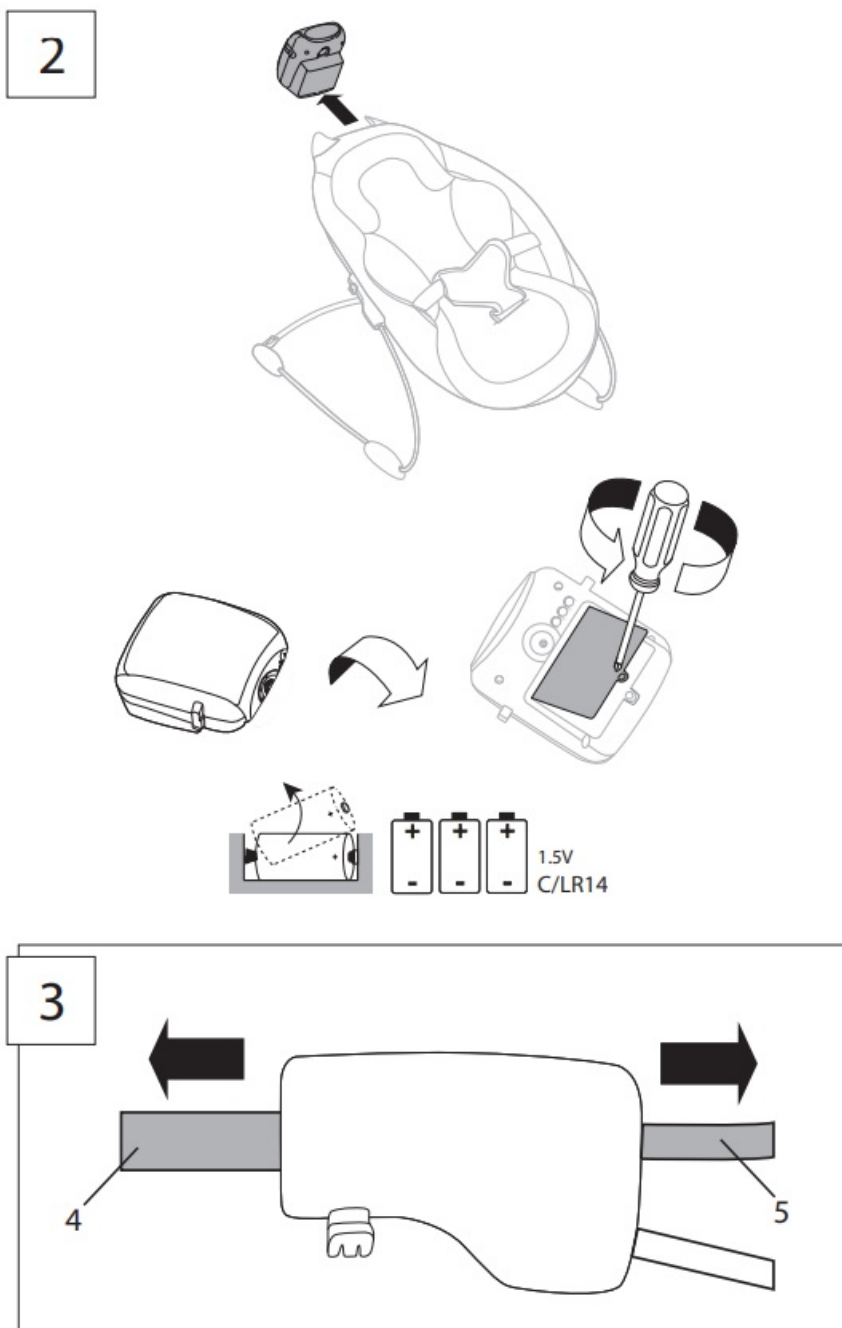
**Volume Control Button** – Press the Volume Control Button to alternate between Low, Medium, High, and Mute settings.

### Storage and Travel



1





Find us on Facebook and Instagram @ingenuitybaby  
Retrouvez-nous sur Facebook et Instagram @ingenuitybaby

Toys • Activity Gyms • Bouncers • Rockers • Swings • Bassinets • Playards • High chairs • Booster Seats  
Jouets • Gymnase Activité • Transat • Balancelle • Balancelle • Berceau • Parc de jeu • Chaise Haute • Chaise  
Haute À Installer Sur Une Chaise

[ingenuitybaby.com](http://ingenuitybaby.com)

MANUFACTURED FOR • FABRIQUÉ POUR © ©2023 KIDS2, INC. [www.kids2.com/help](http://www.kids2.com/help) KIDS2, INC. ATLANTA,  
GA USA 30305 • 1-800-230-8190

IMPORTED BY • IMPORTÉ PAR


KIDS2 AUSTRALIA PTY LIMITED CASTLE HILL, NSW AUSTRALIA 2154 • (02) 9894-1855

KIDS2 JAPAN K.K. c/o ARK Outsourcing KK 4-3-5-704, Ebisu, Shibuya-ku, Tokyo, Japan 150-0013 • (03) 5322-  
6081 KIDS2 UK LTD. GROUND FLOOR, SUITE A1A, BREAKSPEAR PARK, BREAKSPEAR WAY, HEMEL  
HEMPSTEAD,

HP2 4TZ • +44 01582 816 080

KIDS2 EUROPE BV 5 KEIZERS, KEIZERSGRACHT 287, 1016 ED AMSTERDAM, NETHERLANDS • +31 20

## Documents / Resources

 <p>SmartBounce Automatic Bouncer™ - Braden™</p> <p>Model: 11542-ES Ingenuity Kids2, LLC</p> <p>ingenuitykids.com</p>	<p><a href="#">ingenuity 11542-ES SmartBounce Automatic Bouncer</a> [pdf] User Manual</p> <p>Braden, 11542-ES SmartBounce Automatic Bouncer, 11542-ES, SmartBounce Automatic Bouncer, Automatic Bouncer, Bouncer</p>
--	--

## References

- [Ingenuity™ – Kids2, LLC](#)
- [Kids2 Contact Us – Kids2, LLC](#)
- [User Manual](#)

### Manuals+. [Privacy Policy](#)

This website is an independent publication and is neither affiliated with nor endorsed by any of the trademark owners. The "Bluetooth®" word mark and logos are registered trademarks owned by Bluetooth SIG, Inc. The "Wi-Fi®" word mark and logos are registered trademarks owned by the Wi-Fi Alliance. Any use of these marks on this website does not imply any affiliation with or endorsement.