



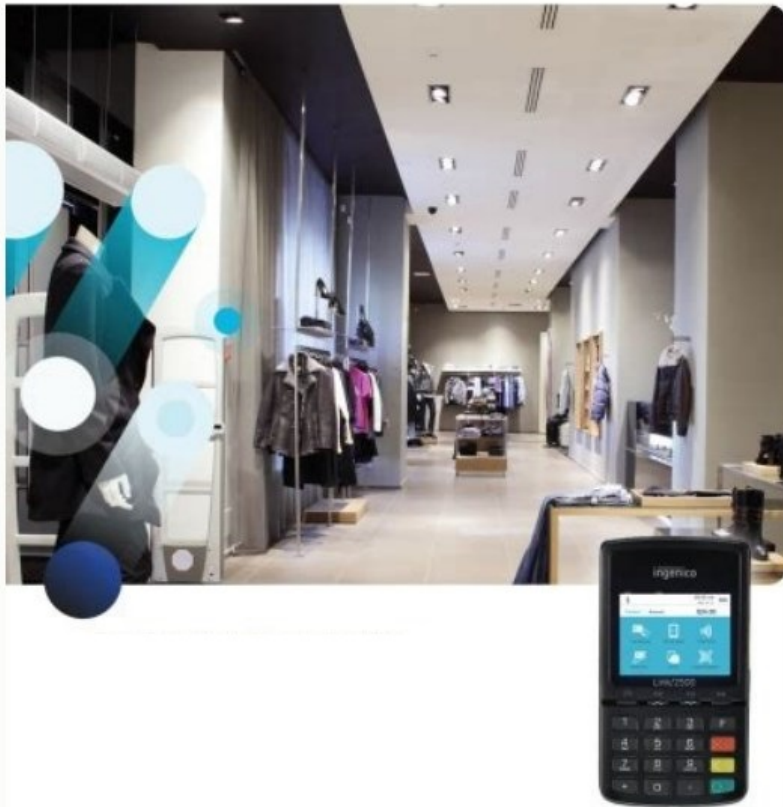
ingenico Link-2500 Portable Flex Device User Guide

[Home](#) » [ingenico](#) » ingenico Link-2500 Portable Flex Device User Guide 

ingenico Link-2500 Portable Flex Device User Guide



Restarting is a simple solution to many problems, not only in the world of card machines, it also works great with WLAN routers, smartphones and laptops. In this article, I will show you a complete solution to restart all brands of EFTPOS computers, including Ingenico, Verifone, Pax and many more. Next I'll show you how to restart the Ingenico card machine by pressing a button (actually two keys). In this case, you will find more information in this post: PIN-PAD failed. This article provides answers to frequently asked questions. How to restart an Ingenico EFTPOS machine? How to restart an Ingenico extender? How to restart the Ingenico IWL250 card machine? How to restart the card machine? The cartographer Ingenico? How to restart the credit card terminal? How to reset a device with a credit card? How to reset Ingenico? How to reset Pinpad Ingenico? I will be happy if you share this, I am a FinTech professional with over 15 years of experience in payment cards, e-commerce, transaction processing and card machine brokerage. From time to time I share useful tips, tactics and news on digital commerce and fintech. Don't forget to share this post and subscribe to my newsletter.



- Specifically engineered for flexibility to accept all payment methods including NFC/Contactless, Apple Pay and Samsung Pay
- Shorten time to market by leveraging TELIUM applications into a smart companion
- Designed to facilitate the integration with a third party device

Do you have questions? Send me a request on LinkedIn. Read these instructions to understand your terminal and use it optimally. Sorry for the interruption. CSS error. L2500Clwibbt PDF Version Link to User Manual / User Manual 2500.

Check out this document directly at . Is your Ingenico card machine frozen, unresponsive or has stopped working? It's easier than you think and there's no need to unplug it from the socket. I also explain what it means to display a smiley symbol on the screen when restarting the engineer (or after restarting the Ingenico terminal). But before we share it with you, let's go over the most common problems that you can fix with a simple restart – let's dive right in, without further ado: intoB "Restart is a simple solution to many problems, not just the cards in the card – it also works very well for WLAN routers, smartphones and laptops. In this article, I will show you a universal solution to restart restarting restarting in Eftpos machine, especially Ingenico, Verifone, Pax, Pax and Many other brand to restart credit card terminal? How can you restart credit card terminal? I am grateful that I did it accessible. I am a specialist in this area of financial technology that has more than 15 years experience in payment cards, transaction electronics for trade, processing and card change. At the time I share tips, tactics and useful reports on digital trade and fintech. Forget to share this post and sign up for your broadcast list. Do you have any questions? Ping me on LinkedIn. Read this guide, To understand and use your terminal, as at best, \ XC3 \ x97 We encourage you to stop the user manual CSS L2500CLWIBT PDF -Link / 2500 User Manual. Check this document directly at or is the device possible? It's easier than you think and you don't have to remove the plug from the plug. I will also explain what this means when the Ingenico maps during the restart of the system show a smiling symbol (or after restarting the genico terminal). Before you share with you with you, let us see what the most common problems you can solve using simple restart: unnecessary brain, let us start immediatelyThis approach works in the same way: just run the POS device power cord to the socket, then carefully disconnect it. Wait about 10 to 15 seconds and connect the cord. Follow the instructions to swipe your computer and wait for the boot sequence to be completed. Now try the terminal and find out if the problem is resolved. Remember that this method will not work for mobile/wireless models (unless the internal battery is fully released). Here it was a simple and versatile overloading manager for credit card devices (any brand). Preparation of Ingenico cards Learn how to turn on and restart (or restart) Ingenico credit card reader. Restart Ingenico card reader (card device) at the same time press

and hold the point and yellow button for a few seconds – as shown in the picture: The payment terminal is slipping and passes the power cycle – it turns off and turns and immediately turns on. After re -starting Ingenico, wait for up to 1 minute for the device to run the payment program and connect after easy to overload. Note. Some Ingenico tickets instead of a button instead of a point button. If the terminal does not start yourself, read on. How to turn on the Ingenico card machine to move 5000, IWL250? After restarting the wireless terminals, turn the card machine manually. Just press and hold the green button for 2 seconds to turn on the terminal. A smile was shown in the terminal? Have you ever seen the Ingenico card reader? If so, you may be wondering what does it mean if the card apparatus shows a smiling face during startup? If you see a smiling face and nothing to happen for more than 30 seconds, then ... You may need to charge the mobile map device. The essential information about the use, installation, maintenance, security and protection recommendations is provided.



Don't worry, it will automatically turn on when the battery reaches a certain level. Ingenico POS terminals are always available

INGENICO-28-32 Boulevard de Grenelle – 75015 Paris – FRANCE

Tél. +33 (0)1 58 01 80 00

Fax +33 (0)1 58 0191 35 www.ingenico.com

ingenico

Contents

[1 Documents /](#)

[Resources](#)

[2 Related Posts](#)

Documents / Resources

	<p>ingenico Link-2500 Portable Flex Device [pdf] User Guide L2500Clwibbt, IWL250, Link-2500 Portable Flex Device, Portable Flex Device, Flex Device</p>
--	---