



## InFocus Advanced Quantum Laser Projector User Guide

[Home](#) » [InFocus](#) » InFocus Advanced Quantum Laser Projector User Guide 

### InFocus Advanced Quantum Laser Projector

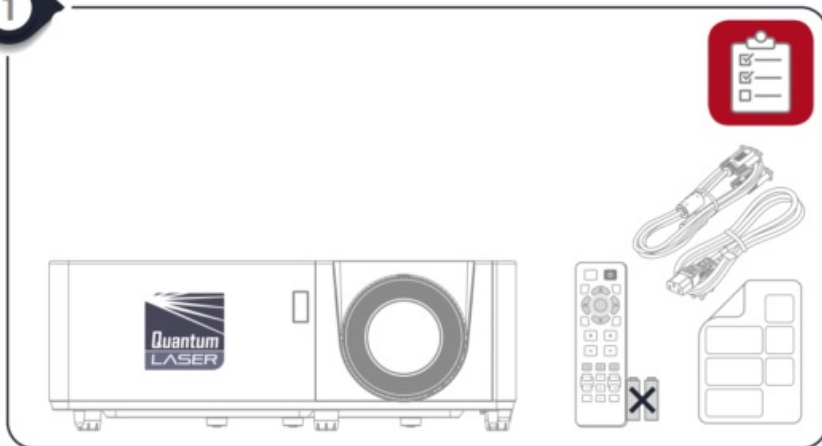


#### Contents

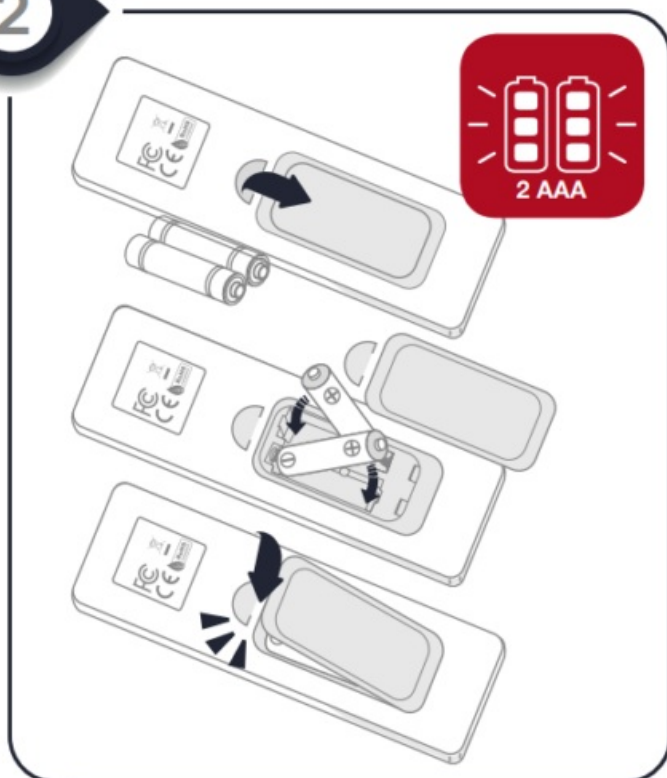
- [1 Using Instruction](#)
- [2 SAFETY INSTRUCTIONS](#)
- [3 Documents / Resources](#)
  - [3.1 References](#)
- [4 Related Posts](#)

#### Using Instruction

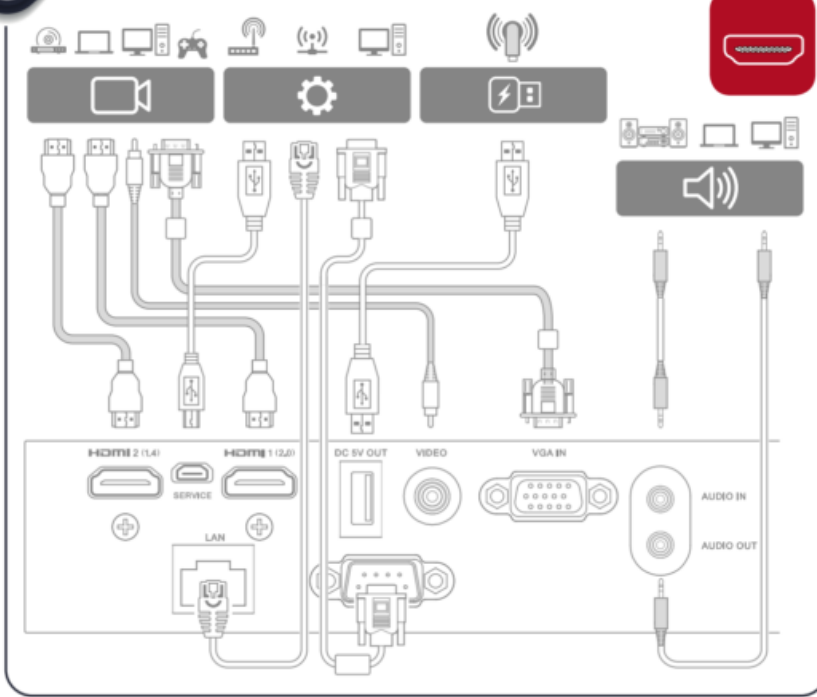
1



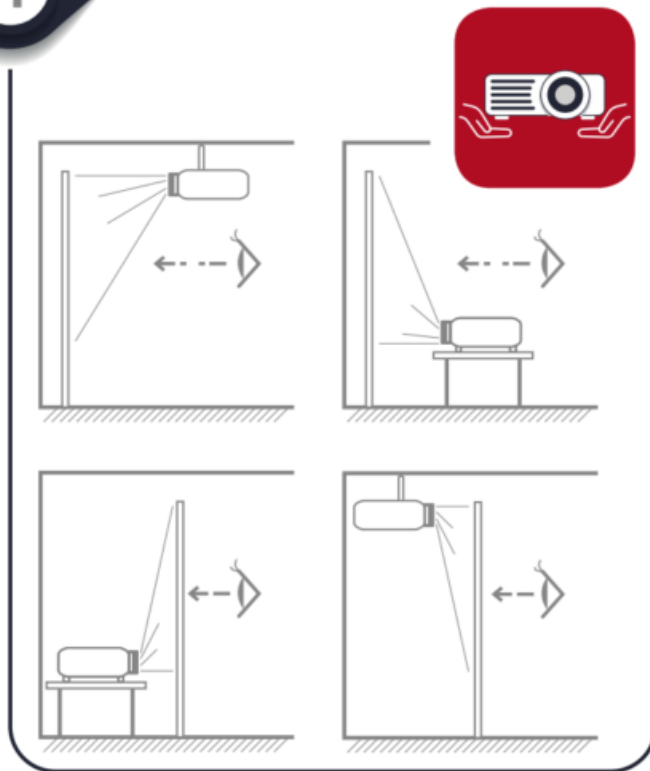
2



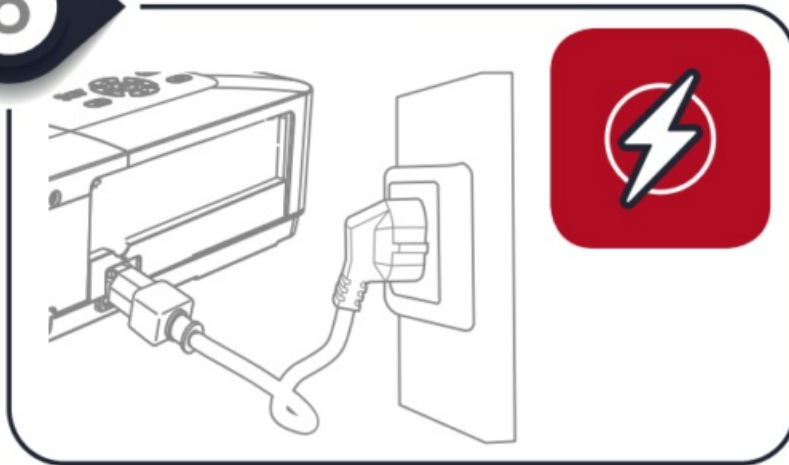
3



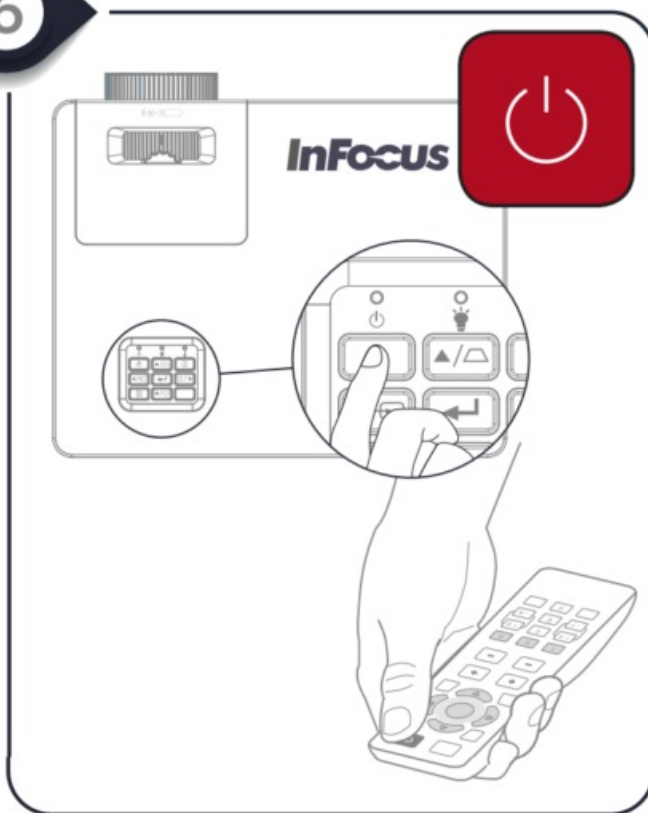
4



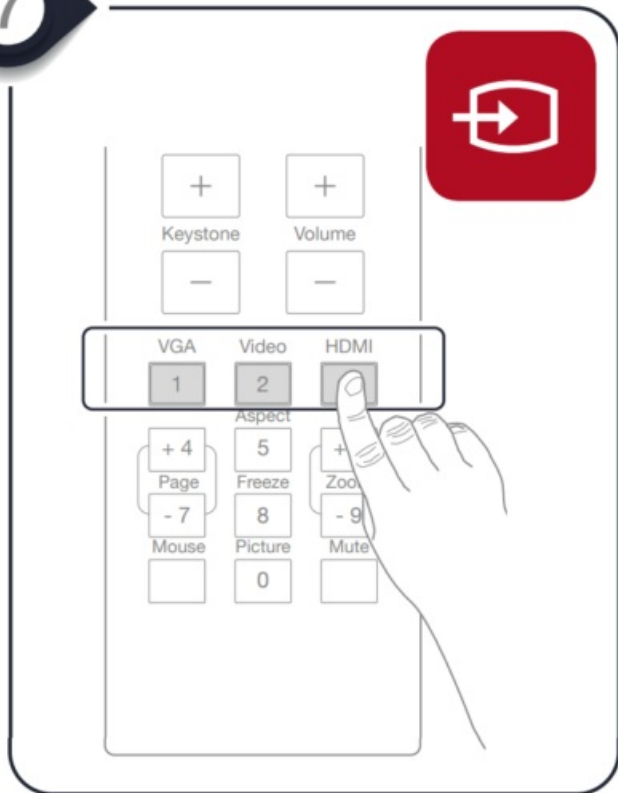
5



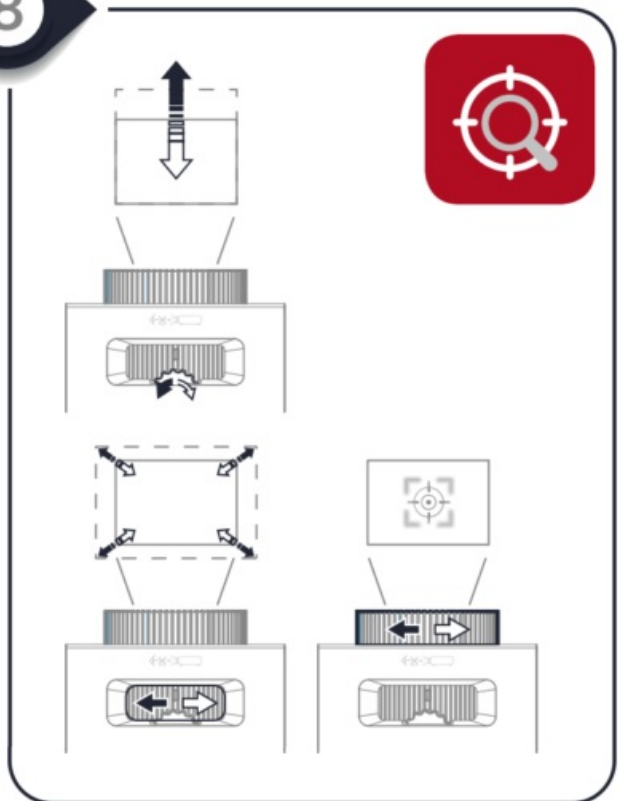
6



7



8



## SAFETY INSTRUCTIONS

InFocus Digital Projectors are designed, built, and tested for use indoors, using InFocus lamps, Laser or LED light sources, InFocus ceiling mount hardware, and common line voltages (100V to 240V AC, 50/60 Hz). The use of other replacement light sources, outdoor operation, or different voltages has not been tested and could damage

the projector, peripheral equipment and/or create a potentially unsafe operating condition. InFocus Projectors are designed to operate in a normal indoor low dust environment.

Voltage supply	100V – 240V AC; 50/60 H
Operation and storage temperature rang	0 to 40 °C (32° to 104 °F)
Relative humidity	0 – 85% Operating humidity (without condensation)
Operation height	0 – 3050m (0 – 10000 feet) above sea level



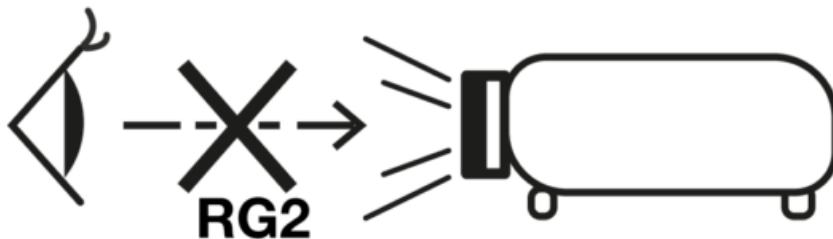
## WARNING

- Do not let objects or liquids enter the projector as they may cause fire or electric shock.
- To reduce the risk of fire or electric shock, do not expose this appliance to rain or moisture.
- Do not attempt to open, dismantle or service the unit yourself. Opening or removing covers may expose you to dangerous voltages, laser radiation or other hazards.



## ATTENTION

- Read and understand the full user guide before operating the projector.
- For International users this product is classified as a CLASS 1 LASER PRODUCT – RISK GROUP 2 of IEC 60825-1:2014. CLASS 3R of IEC 60825-1:2017.



- For users in the U.S. this is a class 3R laser product. Avoid direct eye exposure.

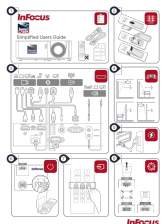


- Do not place the projector on an unstable surface as it may damage the projector or cause injury.
- The ambient operating environment should be free of airborne smoke, grease, oil and other contaminants that can affect the operation or performance of the projector.
- Install in accordance with the manufacturer's instructions. Do not install near heat sources such as radiators, heaters, stoves, or any other apparatus such as amplifiers that emit heat.
- This equipment uses AC power which can be subjected to conditions are unstable. The warranty for this equipment does not cover damage caused by electrical surge. To reduce the risk of this equipment becoming damaged it is suggested that the customer consider installing a surge protector power strip.

- Do not block the projector inlet or outlet air vents as this may cause the projector to overheat and shut down.
- Ensure the operating environment meets the requirements stated in the user guide.
- Only use original attachments/accessories specified by the manufacturer. Use only with the cart, stand, tripod, bracket, or table specified by the manufacturer, or sold with the apparatus. When a cart is used, use caution when moving the cart/ apparatus combination to avoid injury from tipping over
- As with any bright light source do not stare into the direct beam (RG2 IEC 62471-5:2015). The bright light may harm your eyes.
- Turn off the projector and unplug the power cord before performing maintenance or installation of the projector.
- Remove any batteries from the remote control before storage. If the batteries are left in the remote control for long periods, they may leak. Batteries contain corrosive chemicals, which are harmful and can cause severe irritation and bodily injury.
- Refer all servicing to qualified service personnel. Servicing is required when the apparatus has been damaged in any way, such as when the power-cord supply or plug is damaged, liquid has been spilled, objects have fallen into the apparatus, the apparatus has been exposed to rain or moisture, does not operate normally, or has been dropped.
- The InFocus logo and InFocus are trademarks of Maxnerva Technology Services Ltd. Other trademarks used herein are the properties of their respective owners.
- The symbol on the product, the accessories or packaging indicates that this device shall not be treated as unsorted municipal waste but shall be collected separately. Dispose of the device via a collection point for the recycling of waste electrical and electronic equipment if you live within the EU and in other European countries that operate separate collection systems for waste electrical and electronic equipment. By disposing of the device in the proper manner, you help to avoid possible hazards for the environment and public health that may otherwise be caused by improper treatment of waste equipment. The recycling of materials contributes to the conservation of natural resources.

# InFocus

## Documents / Resources

	<p><a href="#">InFocus Advanced Quantum Laser Projector</a> [pdf] User Guide Advanced Quantum Laser Projector, Quantum Laser Projector, Laser Projector, Projector</p>
---	--

## References

- [User Manual](#)

[Manuals+](#), [Privacy Policy](#)

This website is an independent publication and is neither affiliated with nor endorsed by any of the trademark owners. The "Bluetooth®" word mark and logos are registered trademarks owned by Bluetooth SIG, Inc. The "Wi-Fi®" word mark and logos are registered trademarks owned by the Wi-Fi Alliance. Any use of these marks on this website does not imply any affiliation with or endorsement.